

Introducing Sequencing within The Advanced Scheduling Curriculum

Adam Alvarez
California Polytechnic University
San Luis Obispo, California

Scheduling is one of the most important factors within the construction industry. The current Advanced Scheduling curriculum addresses how to use the program P6, but not the understanding of how to sequence. This project introduced two new lab activities that focus on the understanding of sequencing while using P6. I chose this project because I have always had an interest in scheduling as it is one of the most important driving factors in construction and after taking Advanced Scheduling in my Junior year, I noticed there is a need for understanding sequencing. I wanted to introduce a new curriculum because I think there is room for improvement within the current curriculum, specifically scheduling. Each activity is scope specific requiring more critical thinking on sequencing and activity selection.

Key Words: CPM, Sequencing, Scheduling, P6, Critical Path

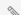
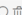
Window Detail Sequencing					 
Criteria	Ratings				Pts
Overall Completion, Minimum of 4 WBS	10.0 pts Excellent	8.0 pts Missing a Few (not clear)	6.0 pts Below Minimum Standards	3.0 pts Missing/Not Complete	10.0 pts
Accurate Activities - Pulled from Plans, Photos, Submittal	10.0 pts Excellent	8.0 pts Met Minimum Standards	6.0 pts Below Minimum Standard	2.0 pts Missing/Not Complete	10.0 pts
Activities Sequenced Correctly (Within 21 Days)	5.0 pts Excellent	3.0 pts Met Minimum Standards		1.0 pts Missing/Not Complete	5.0 pts
Print Layout/One Paragraph Write Up	5.0 pts Excellent	2.0 pts Missing/Not Complete			5.0 pts
Total Points: 30.0					

Figure 3. Window Detail Grading Rubric


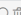
Concrete Parking Garage								
Criteria		Ratings				Pts		
Overall Completion, Minimum of 3 WBS		10.0 pts Excellent	8.0 pts Missing a Few (not clear)	6.0 pts Below Minimum Standards	3.0 pts Missing/Not Complete	10.0 pts		
Accurate Activities - Pulled from Plans, Photos, Submittal		10.0 pts Excellent	8.0 pts Met Minimum Standards	6.0 pts Below Minimum Standard	2.0 pts Missing/Not Complete	10.0 pts		
Activities Sequenced Correctly (Within 80 Days)		5.0 pts Excellent	3.0 pts Met Minimum Standards		1.0 pts Missing/Not Complete	5.0 pts		
Print Layout/One Paragraph Write Up		5.0 pts Excellent	2.0 pts Missing/Not Complete			5.0 pts		
Total Points: 30.0								

Figure 4. Concrete Parking Garage Grading Rubric

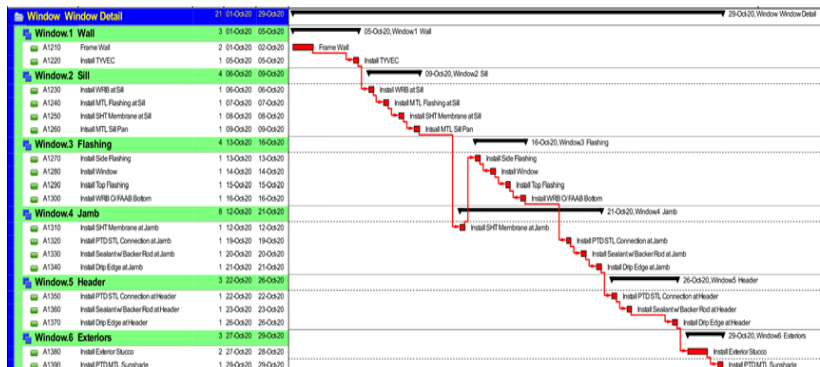


Figure 1. Window Detail Schedule

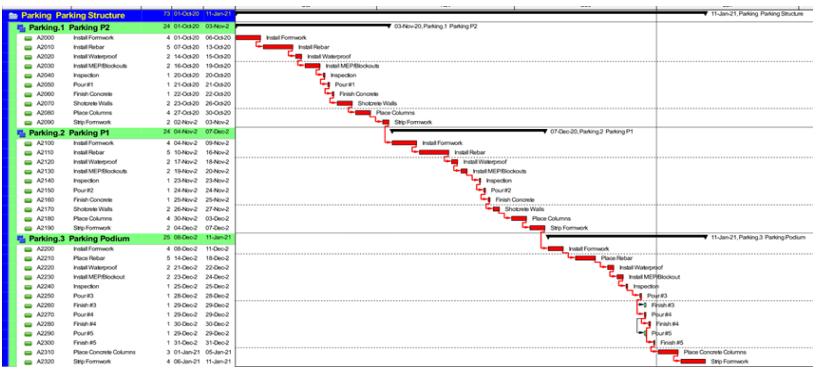


Figure 2. Concrete Parking Structure Schedule