



Group Picture with the community of Selena: Will Myers, Kyler Cruz, Peter Finocchio, Parker Doshier, Tony Roberts, Dani Bain, Andrew Kline



Priest of Community blessing the Soccer Stadium.



Completed placement of stringers and posts.



Donation of Cal Poly Rugby uniforms to the Selena Soccer Team.



Completed benches and start of roof construction.



Cal Poly AGC Belize Trip 2019

Sponsorship Opportunities

CONTACT:

Will Myers

Calpolyagcpresident@gmail.com

(310) 488-4573



Project Background

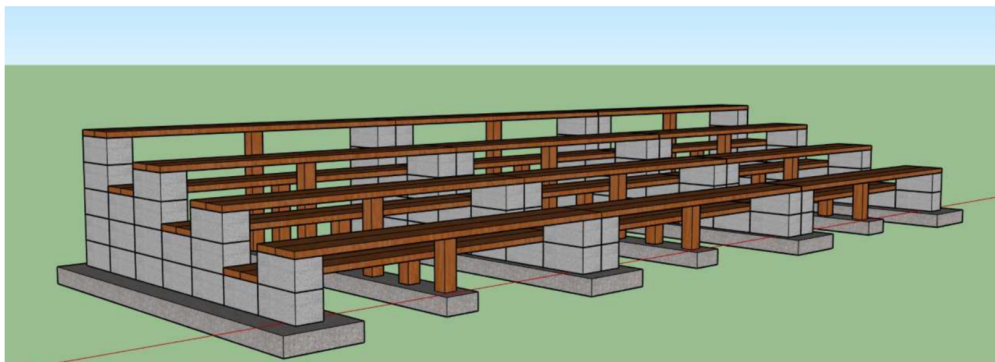
The Cal Poly SLO chapter of Associated General Contractors of California (AGC) is determined to become leaders in the construction industry through service and community outreach. Our very own chapter president, Will Myers, is a member of St. Cross Episcopal Church in Hermosa Beach, CA and has been asked to send a select group of Cal Poly Construction Management students on a service trip to a village St. Ignacio, Belize. The Cal Poly AGC executive board strives to embrace the university's "Learn by Doing" tradition and is determined to make this one of the many hands-on service projects the club will take on in the upcoming year. The community in St. Ignacio is in need of labor to help construct a new set of bleachers at their local recreation field. St. Cross Church has been traveling to this community for over 20 years and has been actively searching for a group of young, hardworking individuals like the AGC executive board to serve on this trip. This service learning project not only will serve as a valuable international construction experience but could be our chapter's most beneficial event of the year and can lead us to an AGC National Chapter Award. Our chapter has applied for multiple grants such as the; ASI Club Grant, Baker and Koob Endowment, and Hasslein Fund that have kickstarted our fundraising efforts towards our target of \$25,000, which is broken down in detail below.

See below how your organization or company can help send the Cal Poly AGC executive board to St. Ignacio, Belize and be recognized as one of the many team members who helped make this trip happen.



Project Details

Our design has been constructed based off of what has been requested by the community, spectator bleachers. In the community, soccer has been a unifying force to bring people of all ages together. Bleachers will not only make a valuable addition to their community sports fields but further support the communities love for soccer. We have chosen a CMU block and 2 x 6 lumber design because of its simplicity and sustainability.



Materials:

CMU block – Used to create stringers for the bleachers; support.

Mortar- Infill every other cell of CMU, and place CMU.

Anchor Bolts- Set AB's at every block termination to connect treated lumber CMU cap.

Rebar- Structural component for concrete pads

3,500 PSI Concrete pads

8' 2x8 Redwood - Horizontal components of slat bench

8' 2x6 Treated Redwood - Cap of CMU block, underneath Horizontals

3" Deck Screws- Attach horizontals to treated wood at top of CMU

Paint- Dark Blue

Due to the high cost of bringing our own materials from the states to Belize, we have been in contact with Juan Peralta; a carpenter in the community and minister of the church in the San Ignacio, Belize. Juan has offered to pour the structural pads per plans; prior to arrival in Belize due to the short time frame we will be on the ground in Belize. By having Juan pour the pads, we will not need to wait for the slabs to cure and we can start building the CMU stringers as soon as possible. The other materials we will need such as, wood and fasteners are sold at the local hardware store and will be purchased upon arrival. All the tools needed to build this project will also be bought locally.



Costs

Travel & Logistics Cost	
	Cost Per Person
Car rental(8 people)	\$16
Round Trip Flight	1,000
Food	50
International	200
Room (Breakfast/Lunch/Dinner)	275
TOTAL PER PERSON	\$1,541
Estimated Volunteers:	8
Estimated Total Cost:	\$12,328.00

Belize Material List & Cost				
Material	Quantity	Unit	Price/unit	Price
CMU Block	410	EA	\$2.70	\$1,107.00
Bags of Mortar	24	Bags	\$12.24	\$293.76
Grout (In Cells W/ Anchor)	48	Bags	\$12.24	\$587.52
Anchor Bolts	84	EA	\$1.00	\$84.00
Rebar	220	LF	\$0.40	\$88.00
Quikrete (Footings)	150	Bags	\$10.00	\$1,500.00
10' 2x8 Douglas Fir	84	EA	\$18.40	\$1,545.60
8' 2x6 Treated Douglas	12	EA	\$14.94	\$179.28
8' 4x4 Treated	10	EA	\$21.76	\$217.60
3" Deck Screws	4	Box	\$58.00	\$232.00
Paint (Dark Blue)	5	Buckets	\$32.00	\$160.00
Total Estimated Material Cost				\$5,994.76

Total Logistics Cost	\$12,328.00
Total Material Cost	\$5,994.76
Contingency	10%
TOTAL ESTIMATED TRIP COST	\$20,155.04



Sponsorship Packages

Sponsorship Level	Service Project Materials	Social Media Shoutout	Logo on Volunteer T-Shirts	Logo on Trip Banner	Cal Poly Student Chapter Presentation	Thank You Dinner at Cal Poly
Platinum 2500+	x	x	x	x	x	x
Gold 2000+	x	x	x	x	x	
Silver 1500+	x	x	x	x		
Bronze 500+	x	x	x			
Green 200\$	x	x				
White 100\$	x					

Sponsorships are accepted in cash or check form. Please make checks out to “CalPoly ASI” and include “ACG Belize Sponsorship” in memo line.

In conclusion, we believe this project can and will be an amazing learning opportunity for our AGC Cal Poly, San Luis Obispo Chapter. Not only will it aid in our construction-oriented education but will allow us the opportunity to experience a new culture and give us a new appreciation for the lives we live back home while helping out a town in need.

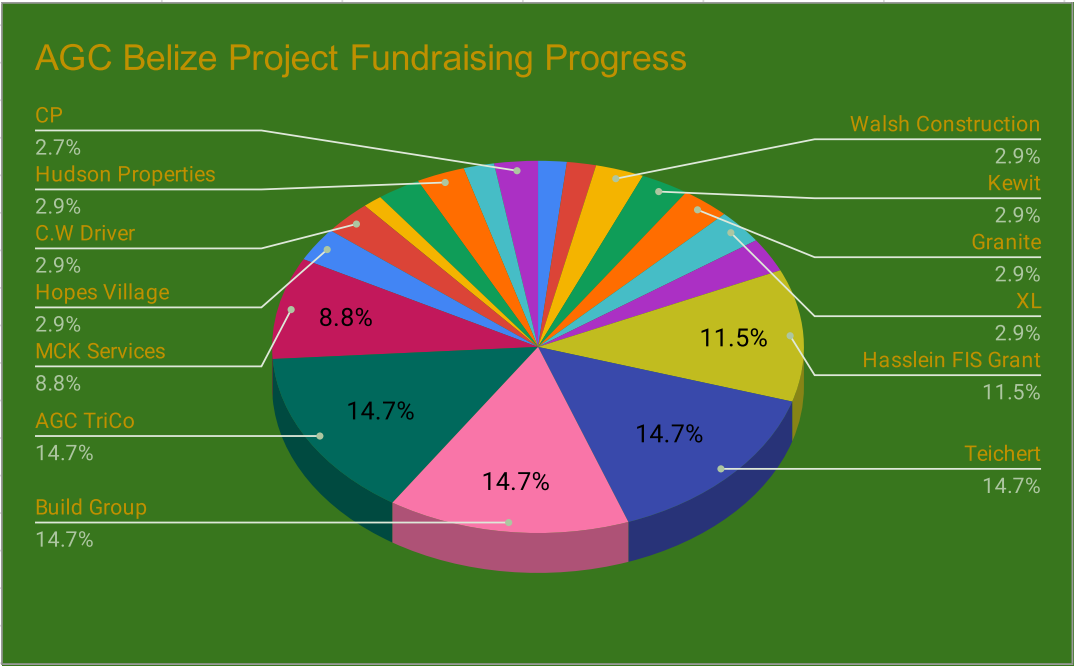
We, the executive board of Associated General Contractors at Cal Poly, thank you for your consideration.

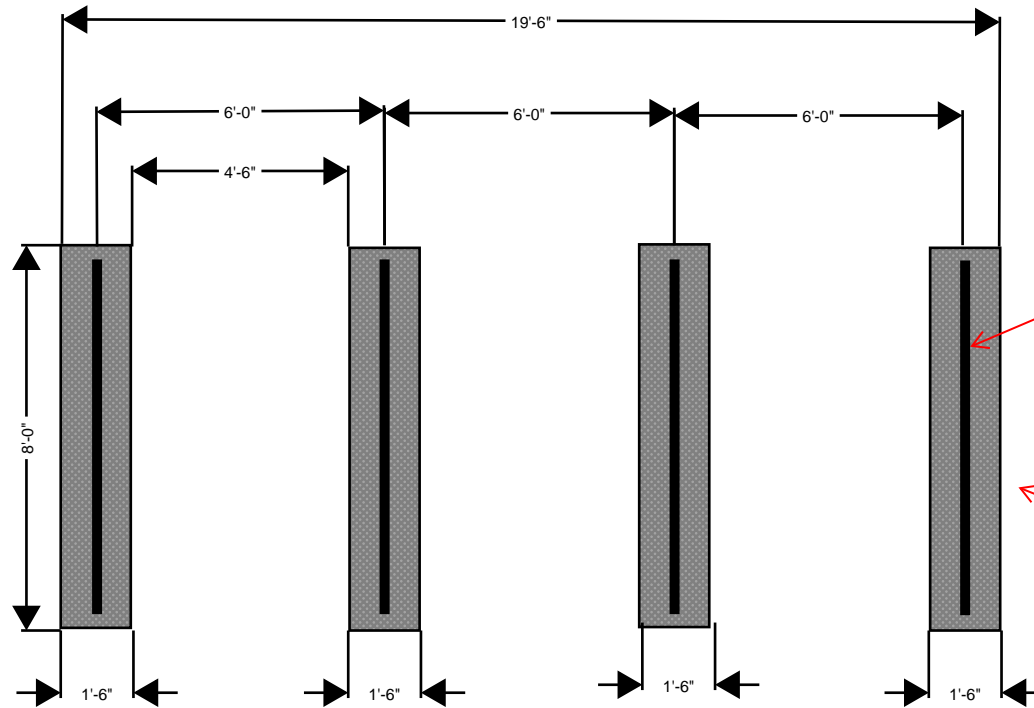
Tools to Bring	
Tool	Quantity
Drill	1
Impact	1
Square	2
Measuring Tape	2
Torpedo Level	2
Hammer	2
String Line	1
Rubber Mallet	1
Hand Drill	1
Hand Saw	1
Paint Brush	8
Pencil	5
Marker	5
Note Pad	1
Knife w/ Blades	2
Drill Bits	2
Driver Bits	2
Sponge	5
Convex Jointer	2
Pointer Trowel	5
Wide Heel Trowel	5
Ball Mixing Arm	1
Extension Chord	1

AGC Belize Service Project Fundrasising Progress

Fundraising Goal:	\$16,568.00
Fundraising To Date:	\$16,960.59
Fundraising Remaining:	-\$392.59

FUNDRAISING BREAKDOWN	
Chipotle Fundraiser	\$294.59
Steel Supply	\$300.00
Walsh Construction	\$500.00
Kewit	\$500.00
Granite	\$500.00
XL	\$500.00
Hanover	\$500.00
Hasslein FIS Grant	\$1,950.00
Teichert	\$2,500.00
Build Group	\$2,500.00
AGC TriCo	\$2,500.00
MCK Services	\$1,500.00
Hopes Village	\$500.00
C.W Driver	\$500.00
IMCO	\$200.00
ASI Donation	\$450.00
Hudson Properties	\$500.00
Simpson Strong Tie (Fastners)	\$316.00
CP	\$450.00





CMU Block
rows/stringers/walls
@ center of footing

Footing details

Length- 8'
Width- 1' 6"
Depth- 4"

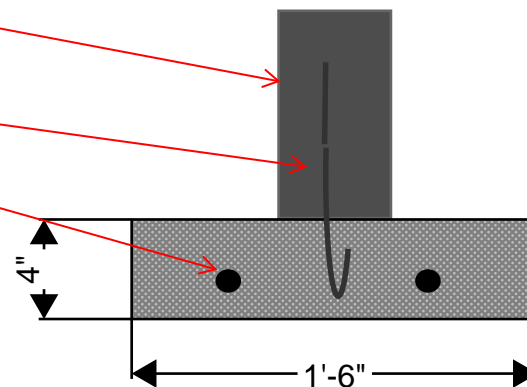
Rebar:
-Install 2 pieces
running parallel long
ways.

- Depending on the
dimensions of CMU
cells, place the
vertical rebar in the
center of slab, and
stub-up in order to
meet no less than 2
cells in each row.

CMU Block
rows/stringers/walls
@ center of footing

Vertical Rebar

Horizontal Rebar



Estimated Material needed for footings

Total Concrete= 1.05 Cubic Yards

Total Rebar = 150 Linear Feet

