

SAN LUIS OBISPO BOTANICAL GARDEN AMPHITHEATER BENCH PROJECT – CONCRETE FORMWORK CONSTRUCTION

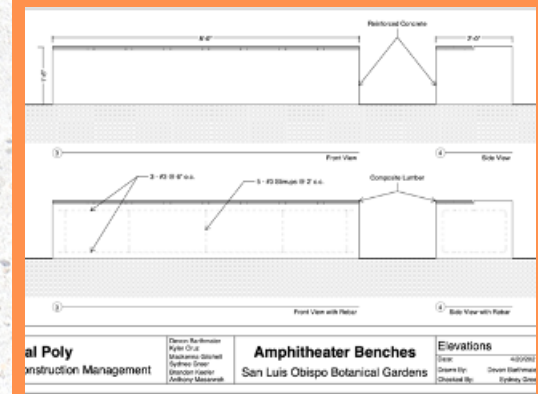
Kyler Cruz

California Polytechnic State University, San Luis Obispo, CA

This senior project included the design, construction, and installation of ten precast concrete benches to create amphitheater seating for 40 people. The project was completed by Kyler Cruz, Brandon Keefer, Sydnee Greer, Makenna Gitchell, Devin Barthmaier, and Anthony Masarweh. The concrete formwork construction is highlighted below. The formwork consisted of plywood, 2x4 lumber bracing, rebar cages, and foam inserts. The forms were all constructed on time and did not fail or deform during the concrete pour.



AMPHITHEATER SEATING LOCATION



BENCH DESIGN



CONSTRUCTING PRO-FORM BOX



CONSTRUCTING FORMWORK BRACING



FORMWORK AFTER CONCRETE POUR



INSTALLING FORMWORK FOR DEPRESSED EDGE

Contact:
kcruz4477@gmail.com
(360) 594-1345