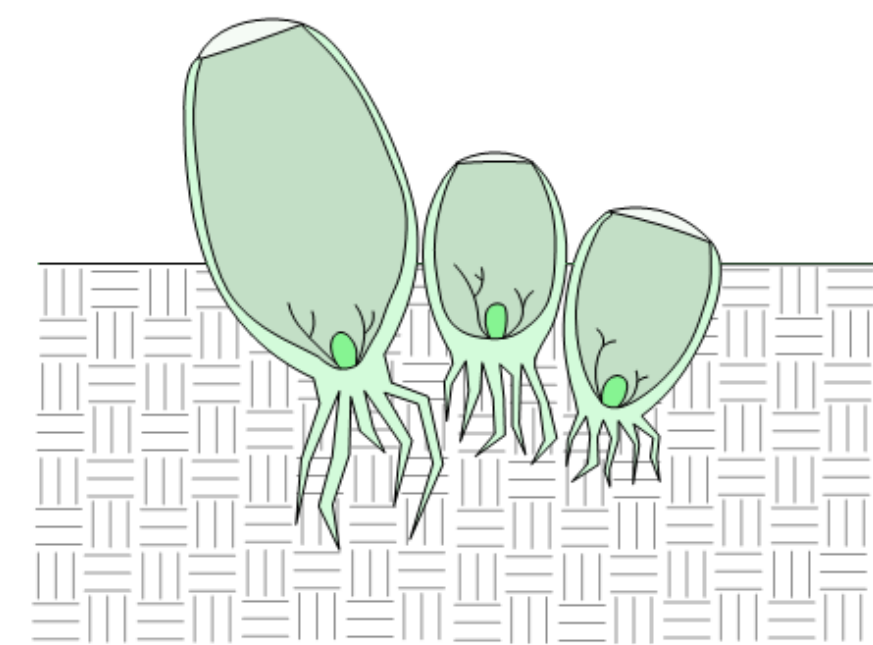


Interdisciplinary Studio Pavilion [ISP] 2019

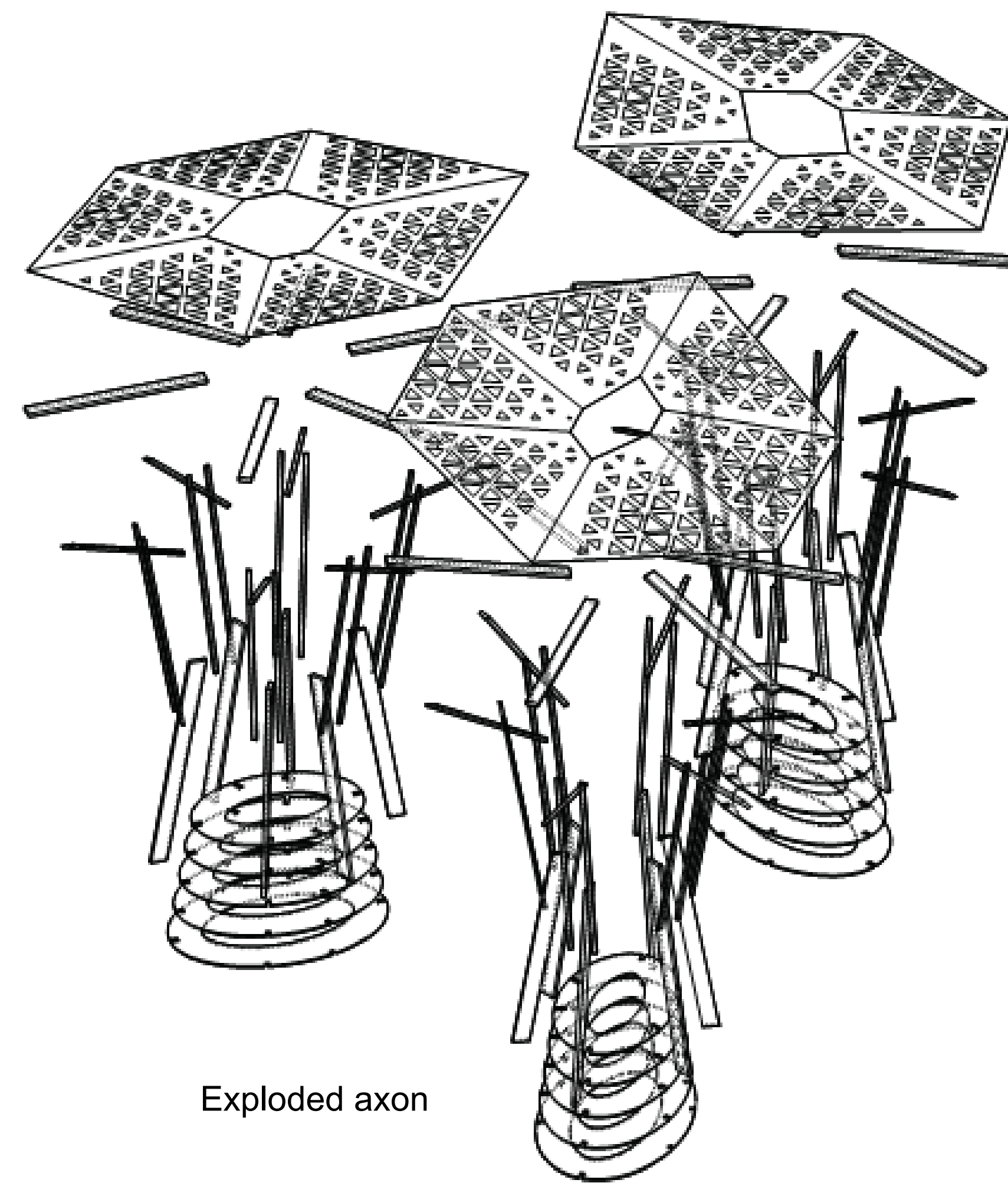
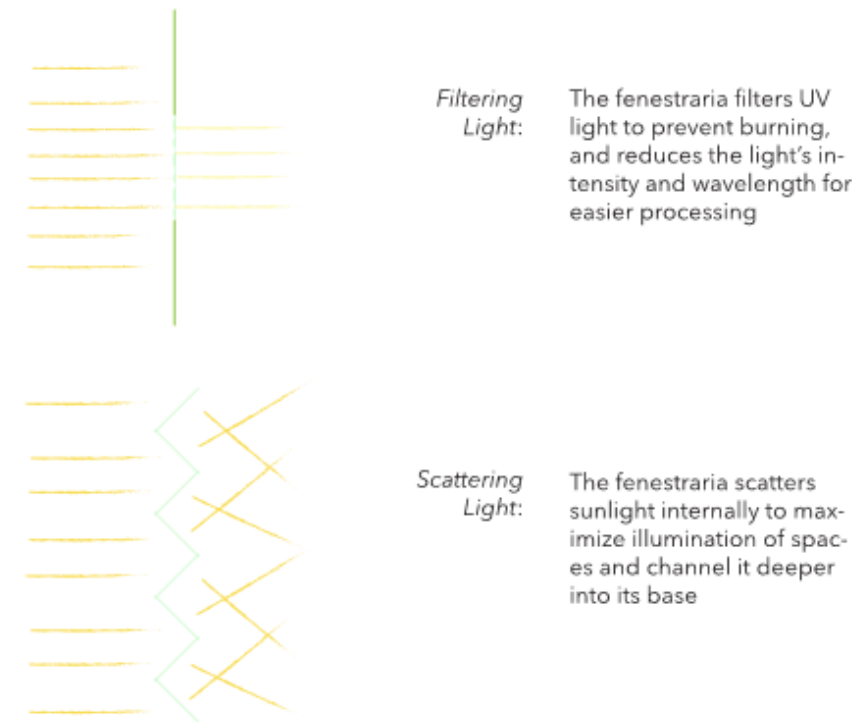
Wine History Project of San Luis Obispo: Succulent Pavilion

BIOMIMETIC DESIGN: GOALS AND ATTAINMENT¹

1) Identify: Fenestraria²
"to manipulate light"



2) Translate: Light Manipulation
"to identify functions"



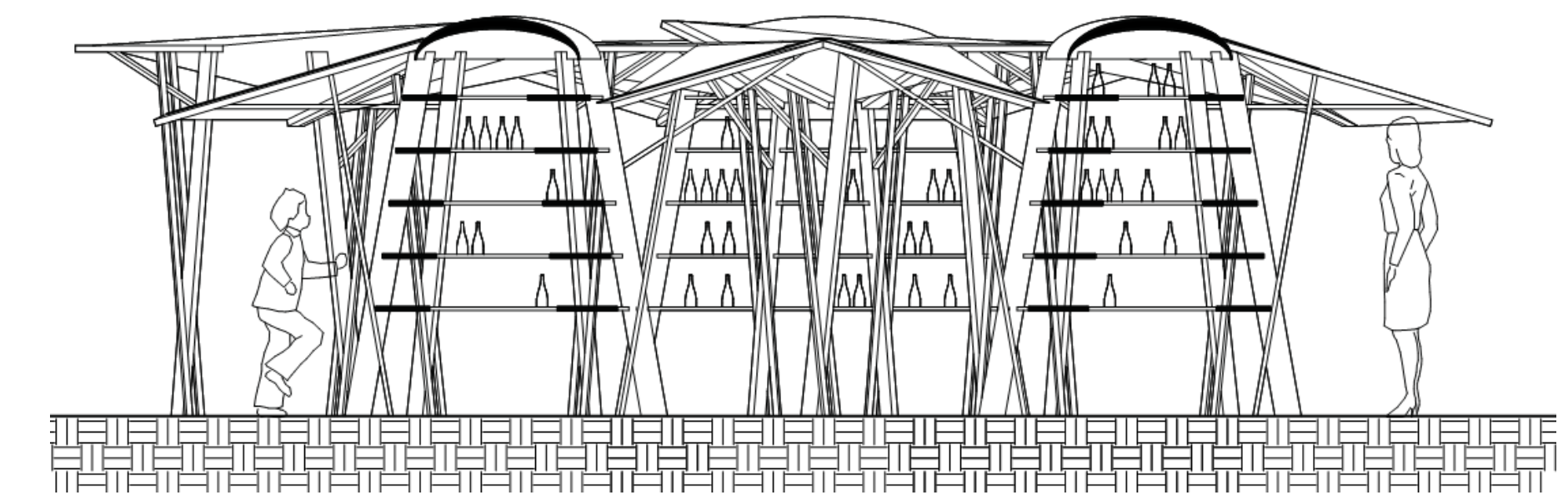
Exploded axon

The Interdisciplinary Studio Pavilion 2019 was designed for students within architecture, architectural engineering, and construction management to be placed into eight interdisciplinary teams and design a pavilion that reflected the narrative for the Wine History Project of San Luis Obispo (the "WHP"). Its curricula emphasized aesthetics; fabrication methods and techniques; ease of assembly, reassembly and transportability; and function. Deliverables for each team's structure focused on these curricula that required numerous design refinements and construction feasibility studies. This required each team member to contribute their respective knowledge about architecture, structural engineering, and construction to create a pavilion that fulfilled WHP's goals. Final deliverables for the project included a fabrication plan, operating manual, and full scale model. Effective communication, experimentation, and creativeness led our team to create a "succulent" inspired design that ultimately fulfilled WHP's requirements.

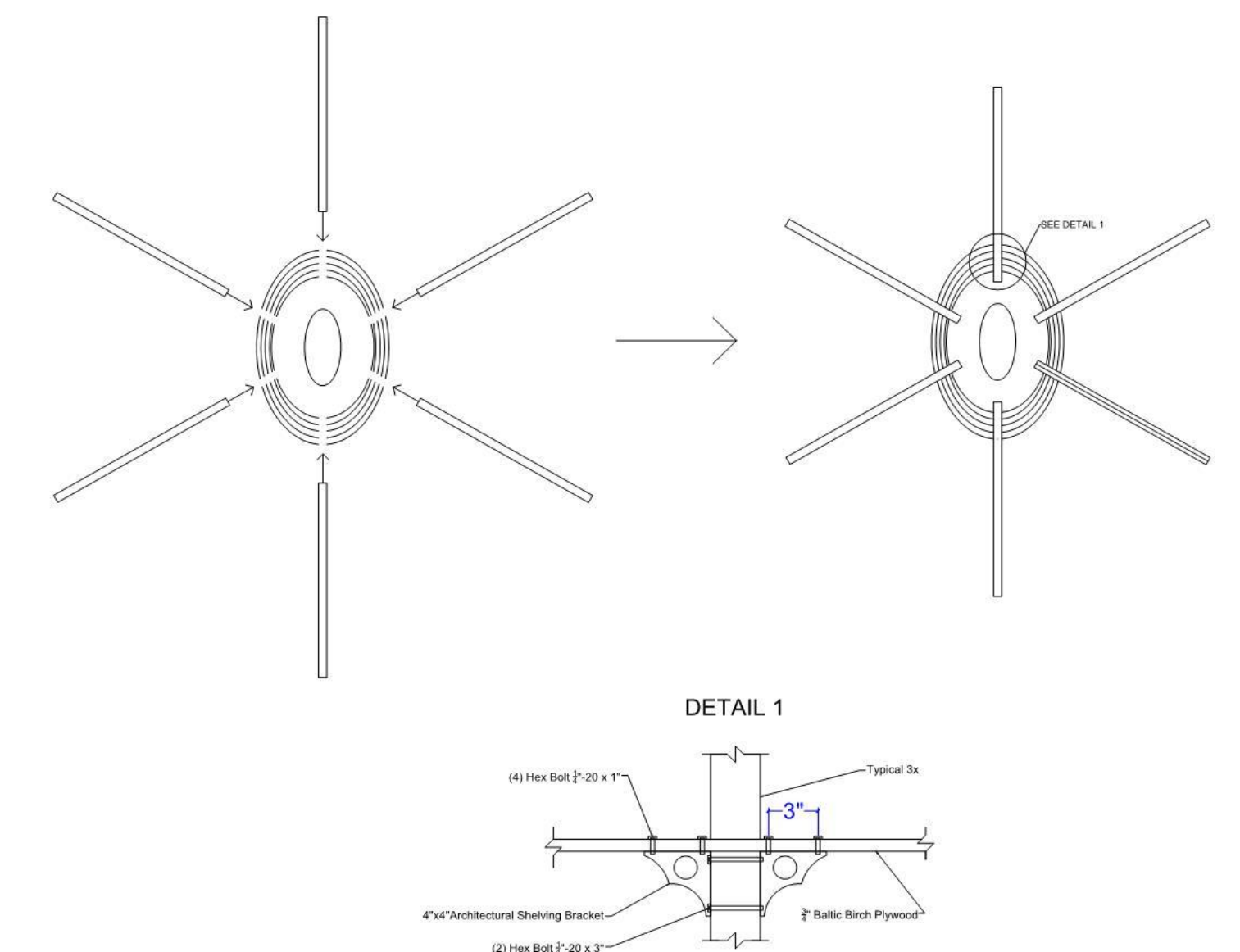
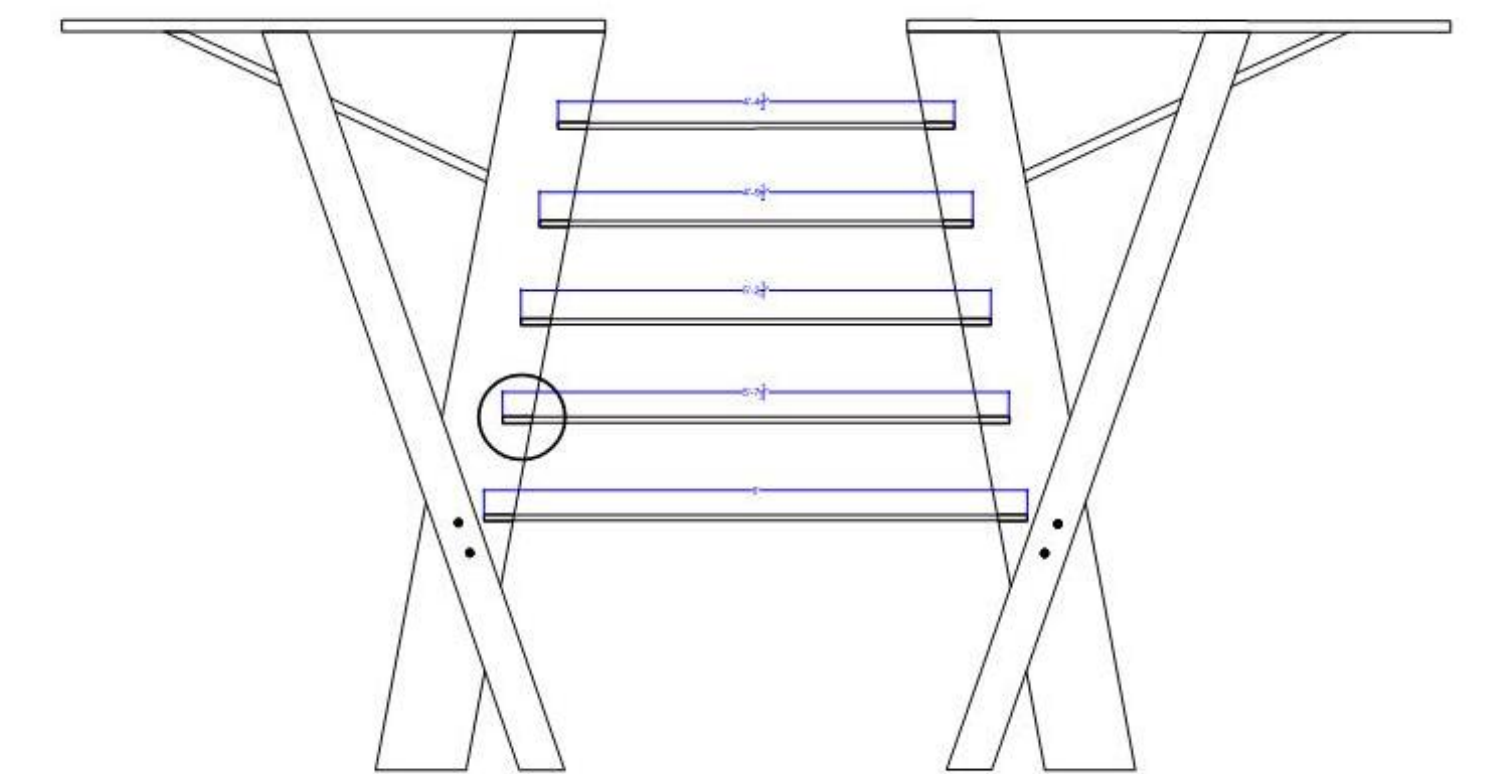
Key Words: Interdisciplinary, Pavilion, architecture, architectural engineering
construction management



Rendering/model of proposed structure



Section of proposed structure



Typical construction detail