

WT6500 Wind Turbine

Gearless Blade Tip Power System



Introducing a breakthrough wind energy system for home and business featuring a revolutionary gearless Blade Tip Power System (BTPS).

The Honeywell Wind Turbine is a gearless wind turbine that measures just 6 feet in diameter, weighs 170 lbs (77 kgs) and is able to produce 2000 kWh/yr in class 3 winds representing 18% percent of an average household's annual electricity needs. The Honeywell Wind Turbine creates power at the blade tips, rather than the complicated gearing of traditional turbines, drastically reducing mechanical

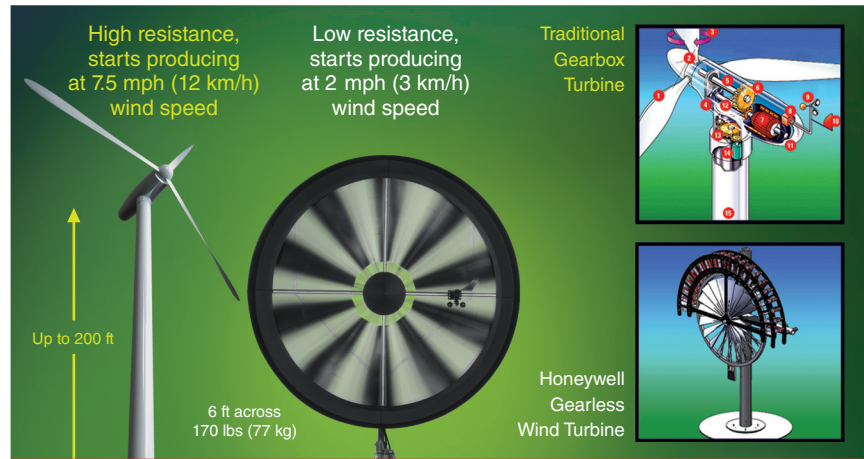
resistance, resulting in far greater energy production even at low wind speeds. Traditional gearbox turbines require minimum wind speeds of 7.5 mph (12 km/h) to cut in and start generating power. The Honeywell Wind Turbine begins generating energy with winds as low as 2 mph (3 km/h).

Honeywell

Bringing wind technology to life.

We've turned wind turbines inside out.

According to the National Wind Technology Center, more than 80 percent of the U.S. residential market experience winds of less than 10 mph (16 km/h) over 90 percent of the time. Standard gear box turbines require a minimum of 7.5 mph (12 km/h) to begin producing energy. The Honeywell Wind Turbine's breakthrough technology can produce energy in as little wind as 2 mph (3 km/h) and can perform in winds up to 42 mph (67.5 km/h), enabling consumers who live in areas with low wind speeds to leverage wind as an energy source.



Dealer Support

The Honeywell Wind Turbine Service Network will handle installation and services for all customers. Honeywell Wind Turbine Dealers will benefit from the following marketing and support programs.



State incentives of 30-100% for wind systems



Dealer Demo Rebate Program



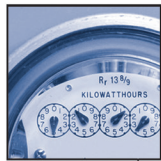
One Source Certified Installation



Technical Support



Web Resource Center



Verifiable Power Output



In Store Merchandising



Training



Consumer DVD



Marketing & Public Relations

Honeywell Model WT 6500 Star Gate Specifications

Honeywell Gearless Wind Turbine
Blade Tip Power System (BTPS)
BTPS Permanent Magnet Electric Generator, Patents Pending
UL Certified (Dec 2009)
Installs on Pole or Roof Mount
Lowest Cost kWh Installed Technology in Class
Enclosed Blade Tip Power System
Wide Wind Acceptance Angle
Acoustic Noise Emissions < 35dB
Tip to Tip Blade Dimension 5.7' (170 cm)
170 lbs (77.2 kg)
120 AC 60 Hz
220 AC 50 Hz (May 2010)
2.2 KW Plate Power
< 2mph (3 km/h) Cut in Speed, Shut down 42 mph (67.5 km/h)
Renewable Electric Generation 2000 kWh/yr - Class 3 Winds
Renewable Electric Generation 2500 kWh/yr - Class 4 Winds (D.O.E. average US household electric 11,000 kWh/yr)
Smart Box Control System (includes)
Optimal Power Transfer Controller
True Sine Wave Inverter
Battery Power Management System
Wind Direction & Speed Measurement Control System
Standard RS485 Communication Port
5 Year Limited Warranty
Annual CO2 Displacement 2.2 Tons
Product Design Life 20 Years

WindTronics

380 W. Western Suite 301, Muskegon, MI 49440
toll free 866.6.EARTH.0 (866-632-7840)
local 231.332.1188
fax 231.726.5029
www.windtronics.com
info@windtronics.com

The Honeywell Trademark is used under license from Honeywell International Inc. Honeywell International Inc. makes no representation or warranties with respect to this product.

© 2009 WindTronics, Inc.

Rev.2 9/09

Honeywell