



CAL POLY

CASS Council

Collaborative Advising for Student Success

Beth Merritt Miller, Ph.D.
Assistant Vice Provost, University Advising

Academic Senate - October 3, 2017

CASS Council

- Academic Programs & Planning
- University Advising
- Office of the Registrar
- Associate Deans
- Advising Center Directors
- Designees responsible for selected policies in colleges
- Student Affairs Reps

Core Values/Guiding Principles

Every student admitted to Cal Poly should have the opportunity to earn a Cal Poly degree. As a university we should be providing assistance and guidance wherever possible to achieve this goal. Our goal is to proactively engage students to provide assistance and guidance as needed to develop a path to completing a degree at Cal Poly.

CASS Council - Charge

- Review and revise policies & procedures
- Develop shared communication plan for policies
- Execute shared policy implementation plan
- Develop & provide tools to implement policies consistently and fairly across colleges

Policies

- Change of Major
- Academic Probation & Disqualification
- Expected Academic Progress
- Other practices/policies

Change of Major Policy – Emerging Issues

- Reviewed department/college practices
- Reviewed data/research
- Collected student input
- Findings:
 - Requiring courses before students enter into ICMA
 - No clear point of entry
 - No mechanism to enroll prospective students into required ICMA courses
 - No mechanism to track students who do not persist in or complete the change of major process

Change of Major Policy – Action Plan

- Revised policy
- Direct students to attend Change of Major Workshop
- Develop online inquiry form in the Change of Major portlet
 - Collect student data on those denied internal admission to intended major
 - Provide support for those students

AP/DQ Policy – Goals

- Easily articulate policy to students
- Implemented consistently across colleges, still allowing deans and associate deans latitude to make decisions on a case-by-case basis
- Policy is focused on student success
- Policy aligns with CSU Executive Order 1038

APDQ Policy – Implementation

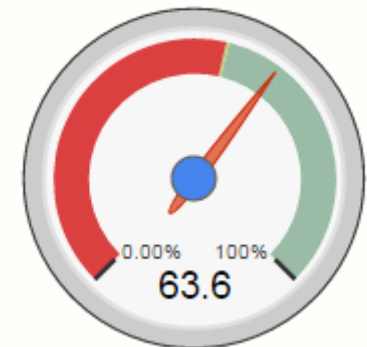
- Two academic statuses
 - **Academic Probation** – Term GPA below 2.00
 - **Academic Disqualification** – Cal Poly Cum or Higher Ed GPA below Academic Progress Level GPA Limits
- **Administrative-Acad Probation/Disqualification**
 - Allows for case-by-case decisions

APDQ Policy: DISQ Status

Academic Progress Levels & GPA Limits:

APL I (0%-20%):	1.500 CPSLO or HE GPA
APL II (20.1%-45%):	1.700 CPSLO or HE GPA
APL III (45.1%-75%):	1.850 CPSLO or HE GPA
APL IV (75.1%-100%):	1.950 CPLSO or HE GPA

Academic Progress



APDQ Policy - Preliminary Results

- Subject DISQ/DISQ 2015-16: 1784
- DISQ 2016-17: 242
- No change in AP status
- Continue to collect data and monitor student status

Expected Academic Progress (EAP) Policy

- Process of analyzing data to determine “Red Flag” – not persisting to graduation
- Follow up – analyzing courses and EAP (identify “barriers” to progress)

Questions?