

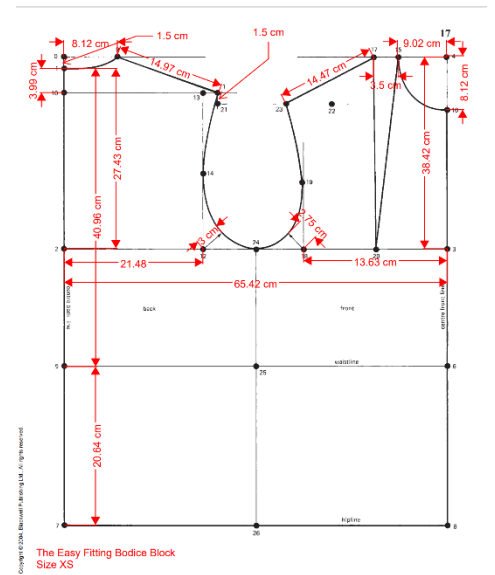
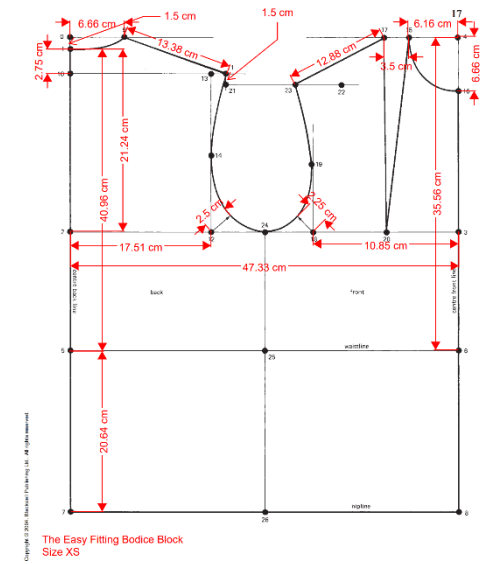
# Designing Safety Vests to Fit Women



Bodice Blocks

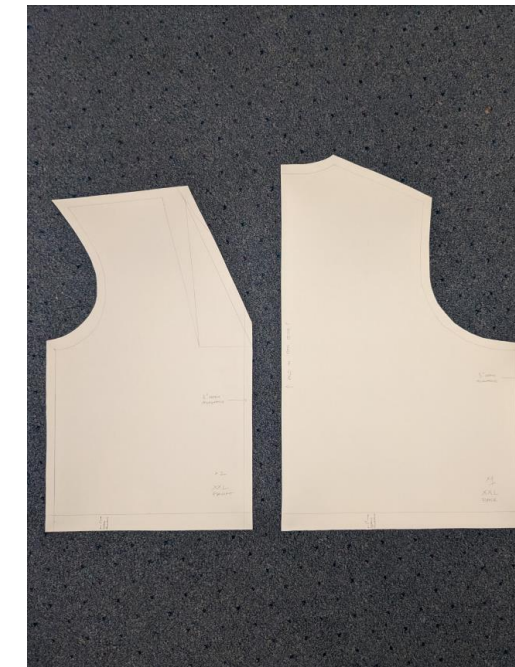
## Abstract

This project focuses on the design and construction of safety vests for women, particularly in XS and XXL sizes. Safety vests are an essential piece of protective equipment worn by individuals working in environments requiring high visibility for safety reasons. The American National Standards Institute (ANSI) and the International Safety Equipment Association (ISEA) develop safety vest standards to ensure 360-degree visibility of workers, but these standards create limitations in manufacturer's abilities to create a well-fitted vest for women of smaller stature, particularly in the sizes between XXS and S, as the required square inches of material result in a baggy fit. This project aims to improve the design of safety vests to provide a better fit for women by using a woman-specific bodice block pattern, which addresses the areas of discomfort women have identified with their vests in previous studies.



Bodice Block Calculations

Finished Vests



Pattern Pieces