

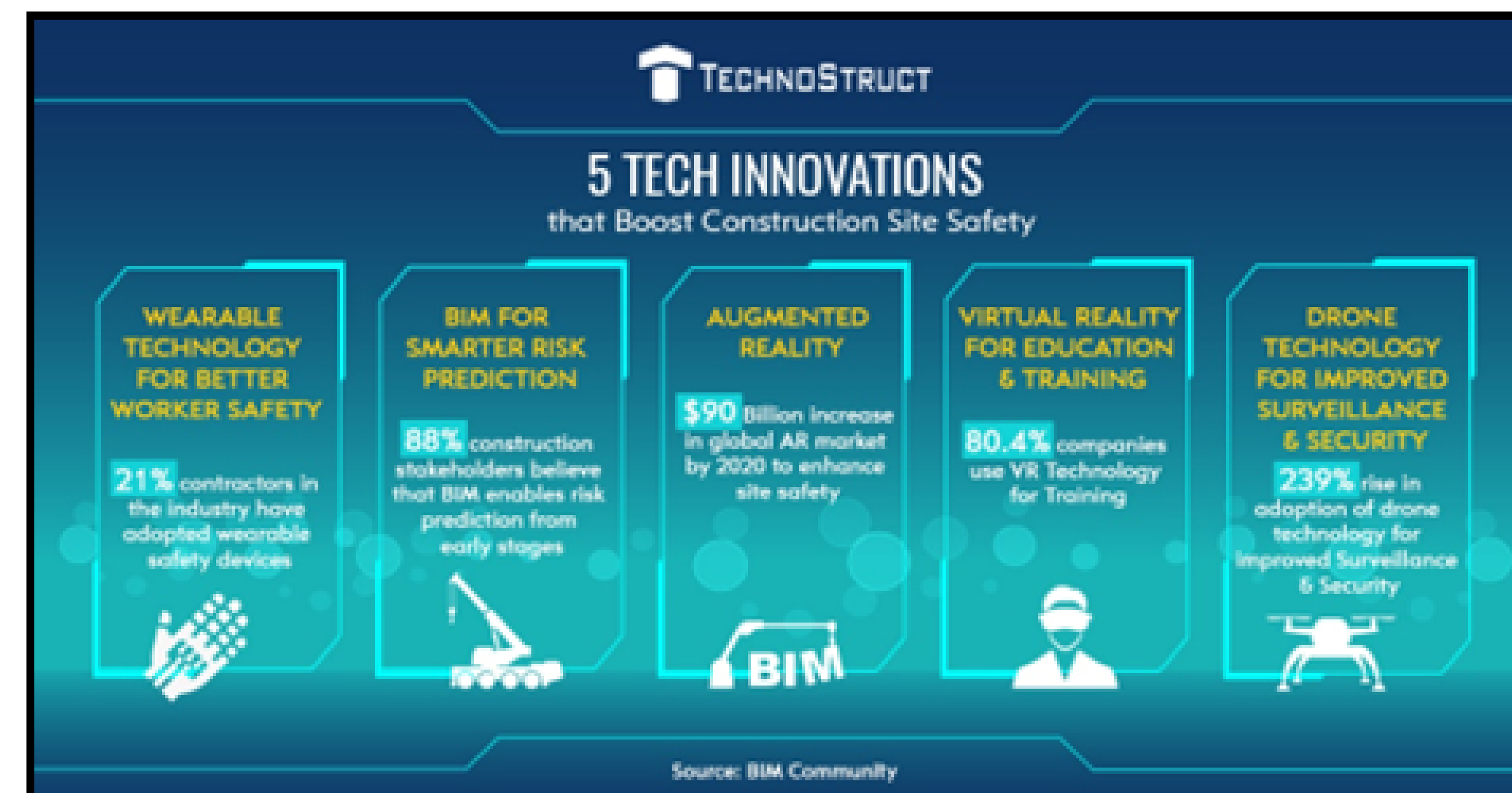
Technological Integration to Enhance Jobsite Safety

Luke Barragan



Safety Infographic

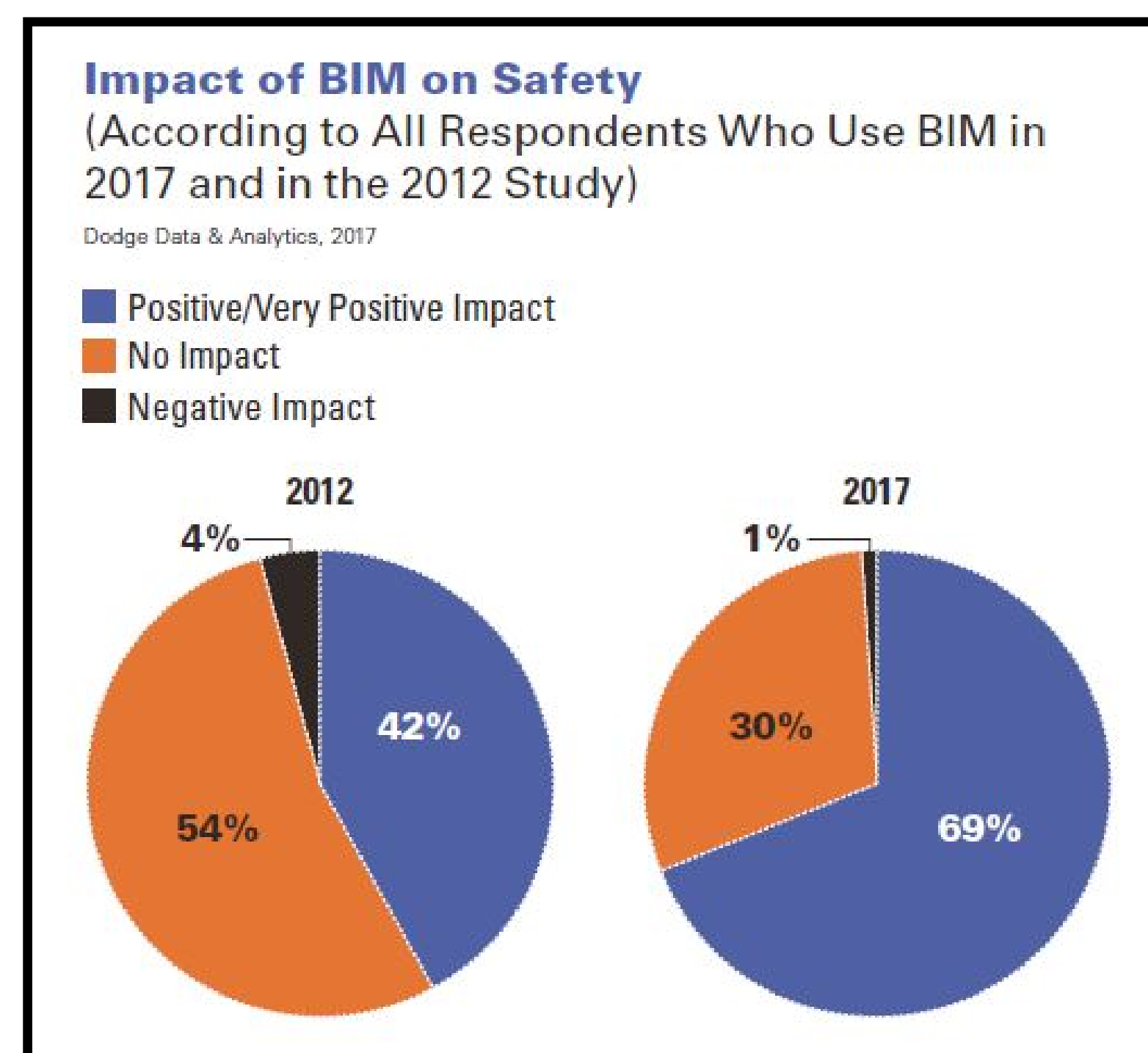
Ensuring safety on the jobsite is the most important aspect of concluding a successful project. Alongside safety on the jobsite is technology, both of which work coherently together to ensure proper construction. Technology has advanced tremendously in the built environment and it is difficult for all aspects of the project to be up to date universally. Safety lacks the technological integration that is found in the design and preconstruction phases of a project. There are software's such as Procore that enable a company to hold all safety construction documents together like JHA's and TBT's, however the efficiency of the safety components within these software's can be improved upon. With new technology being implemented into the world today, I have explored new possibilities such as developing a safety software and implementing robotics, BIM coordination, and wearable technology that can adhere to all safety requirements on a jobsite while also preventing injury. Safety is the most important part of a job and should be held at the highest standard with the help of technology.



Technological Innovations Pertaining to Safety



Wearable Safety Technology



Impact of BIM on Safety between 2012 and 2017

Methodology

Interviews with commercial construction professionals

Personal work experience

Articles and Publishings Research

Allowed for me to have a solid grasp on safety initiatives and how they are being implemented into the built environment

Findings

Increased safety ratings as new technology is being implemented

Companies do not prioritize safety as as much as they should

Future safety efforts will be even more successful than current ones

The new knowledge I discovered allowed me to create my own opinions and ideas for how to improve safety on the jobsite including possible software development that is more user friendly and easy to navigate.



OSHA's Fatal Four Injury Causes