

Paso Robles Police Department Shooting Range - Gun Cleaning Counters & Roof Extensions



Setting Up Post Hole Locations



Post-Hole Drilling



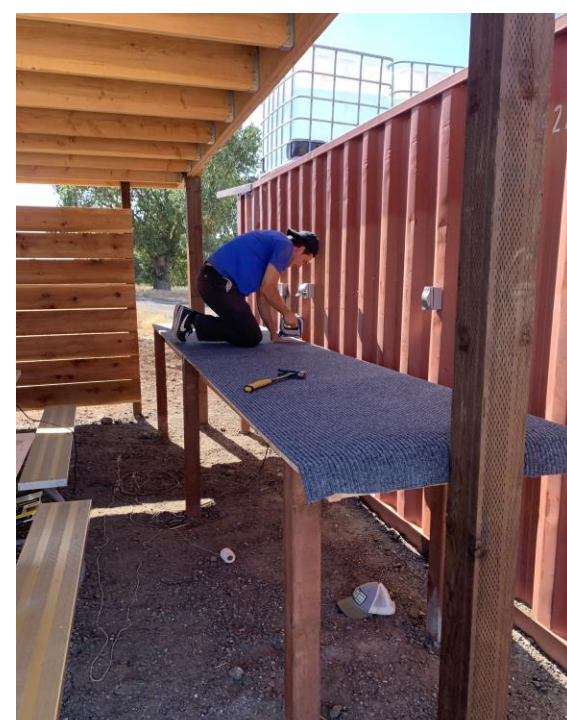
Setting Posts with Quikrete



Constructing Counter Frame



Placing/Leveling Counter-Top



Finishing Counter-Top

Over the past few years, the Paso Robles Police Department and the Cal Poly Construction Management department have developed a professional relationship. Paso PD, looking for a cost-efficient solution to upgrading their shooting range decided to partner with Cal Poly students looking to gain field experience and complete their senior project. This shooting range, starting as just a few targets in an open area, has been developed into a 24-hour usable training facility equipped with storage, water, and electricity. As part of the department's requested scope, two-gun cleaning counters as well as a roof extension to protect these counters were required. After an initial site visit with the 'owner', Commander Davis, we were given the general requirements of the project and instructed we had the freedom of design as well as installation techniques. The first step included developing an appropriate design within the means of the budget. The design process involved regular meetings with both our SME and the owner to ensure that the project met required specifications. The design consisted of 12 - 4x4 pressure treated set posts (2 rows of 3 per counter) topping off at 44", the posts are used to supported a frame of 2x6 beams. For the table top we chose a cheaper material large enough to span the 15 ft distance with only 2 sheets per counter, additionally we chose a soft carpet finish material for the table to ensure no damage to any guns when in use. Due to lack of availability our roof extension design used roofing material similar but not identical those already installed. The roof is supported on the sea-train side by 2x4 vertical supports attached at the base to horizontal 2x4s spanning the length of the sea-trains. After receiving approval of both our budget and proposed design we began the construction process which included material procurement, site preparation, and installation. This process highlighted the difficulties often faced in a construction project. Throughout the course of the project, we learned how to schedule and conduct professional meetings with both design professionals and owners of the project, how to create an appropriate budget and design, how to procure funds for material purchases, various labor-oriented skills, and how to close out a project. Once completed, we learned to always have a strong contingency plan to ensure you are prepared for whatever unforeseen circumstances lie ahead.

Key Words: Finished Countertop, Roof Extension, Paso Robles Police Department, design, installation



Finished Roof Extensions



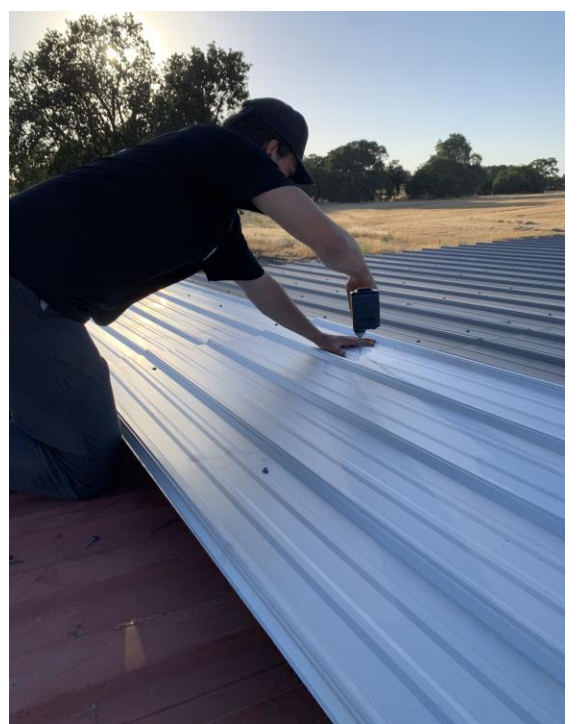
Finished Counters (Photo taken pre roof extension install)



Installation of Sill on Seatrain



Roof support install



Roof/Siding Panel Install



Roof Sloop Test – Ensures water flows properly off roof



Image capturing slope of roof

Max Lassiter
California Polytechnic State University
Max.lassiter123@gmail.com

Lucas Decasper
California Polytechnic State University
Lucas@decasper.net