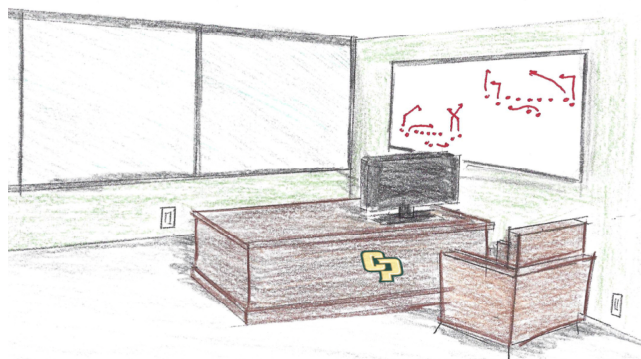


## BUILDING CHARACTERISTICS

- "Mustang Fame Lobby"
- Academic Center
- Player's Lounge
- Stampede Recruitment Zone
- 12 Coaches' Offices on Second Floor
- 4 Large Meeting Rooms
- 1 Team/Unit Meeting Rooms



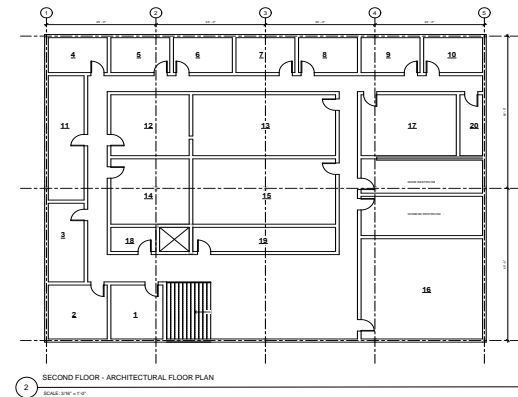
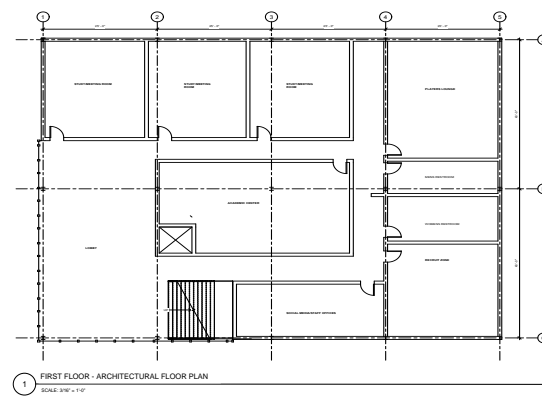
# Design, Schedule, and Cost Estimate for New Cal Poly Football Office Building

Kyle M. Reid

California Polytechnic State University  
San Luis Obispo, California

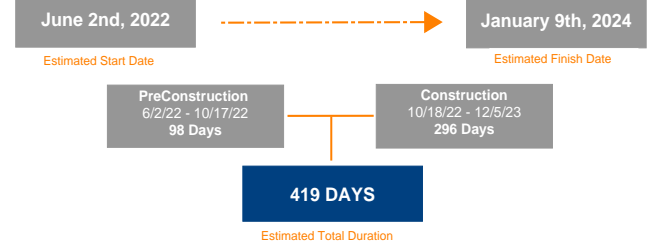
Around the nation, college football programs are building new football facilities to help their current players, coaches, and staff members succeed. These facilities can be additions to current buildings or completely new structures that have multiple functions. A common facility that is built is the football office building. New football office buildings are beneficial for programs because it gives players, coaches, and staff members a central location where coaches can hold meetings and players can interact with each other and support staff. These structures help bring everything that goes on in a football program come together. Because of the importance of these buildings, Cal Poly needs to construct a new football office building that will allow players, coaches, and staff members to interact. This senior project illustrates a hypothetical idea of what a new football office building on Cal Poly's campus would look like. Using a 3D Revit model, general project schedule, and cost estimate, this senior project shows what it would take to add this football office building to Cal Poly's campus.

**Key Words:** Cal Poly Football, Football Office Building, 3D Revit Model, Schedule, Cost Estimate



## PROJECT DETAILS

### DURATION BREAKDOWN



### COST BREAKDOWN

