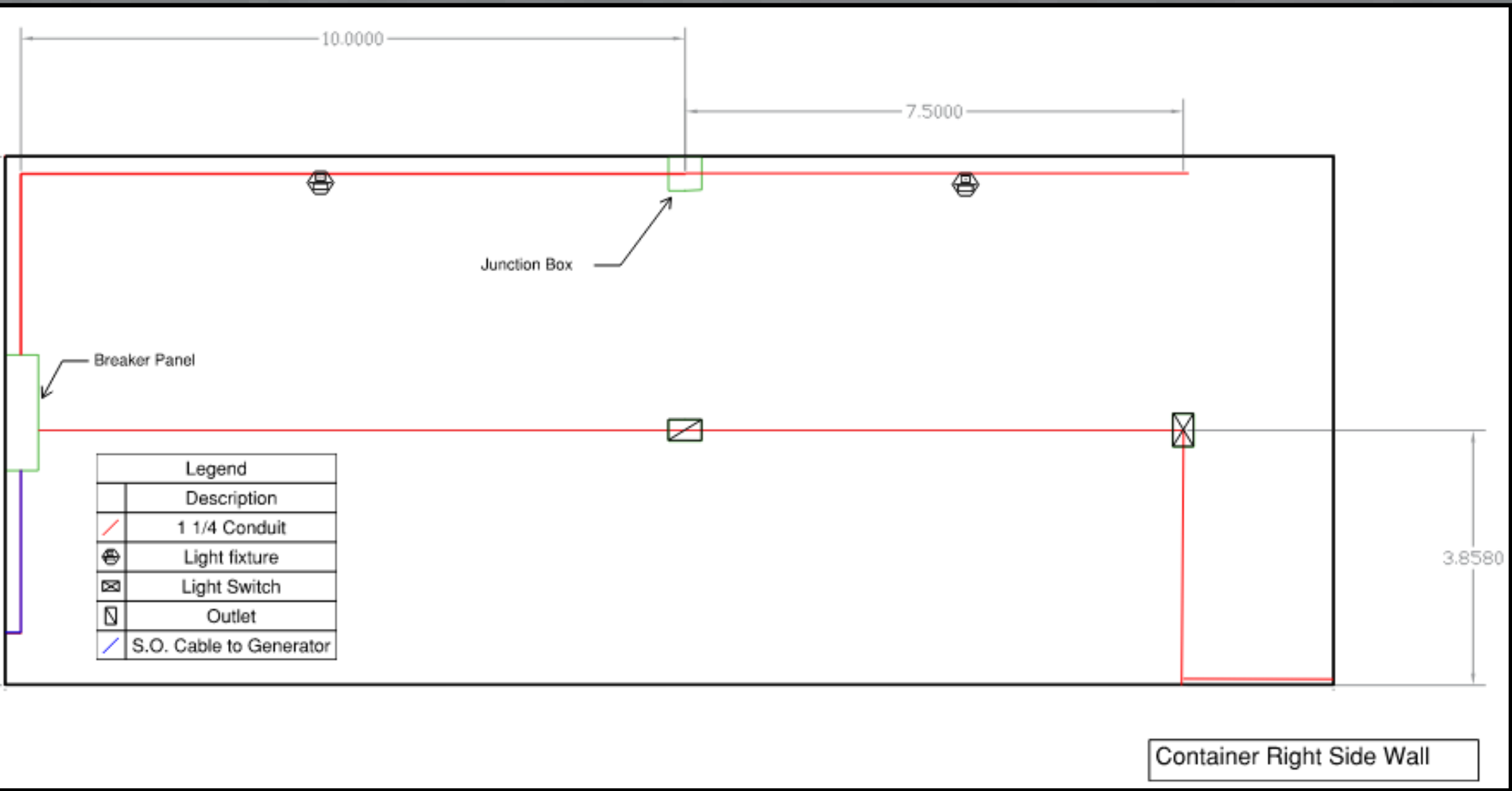
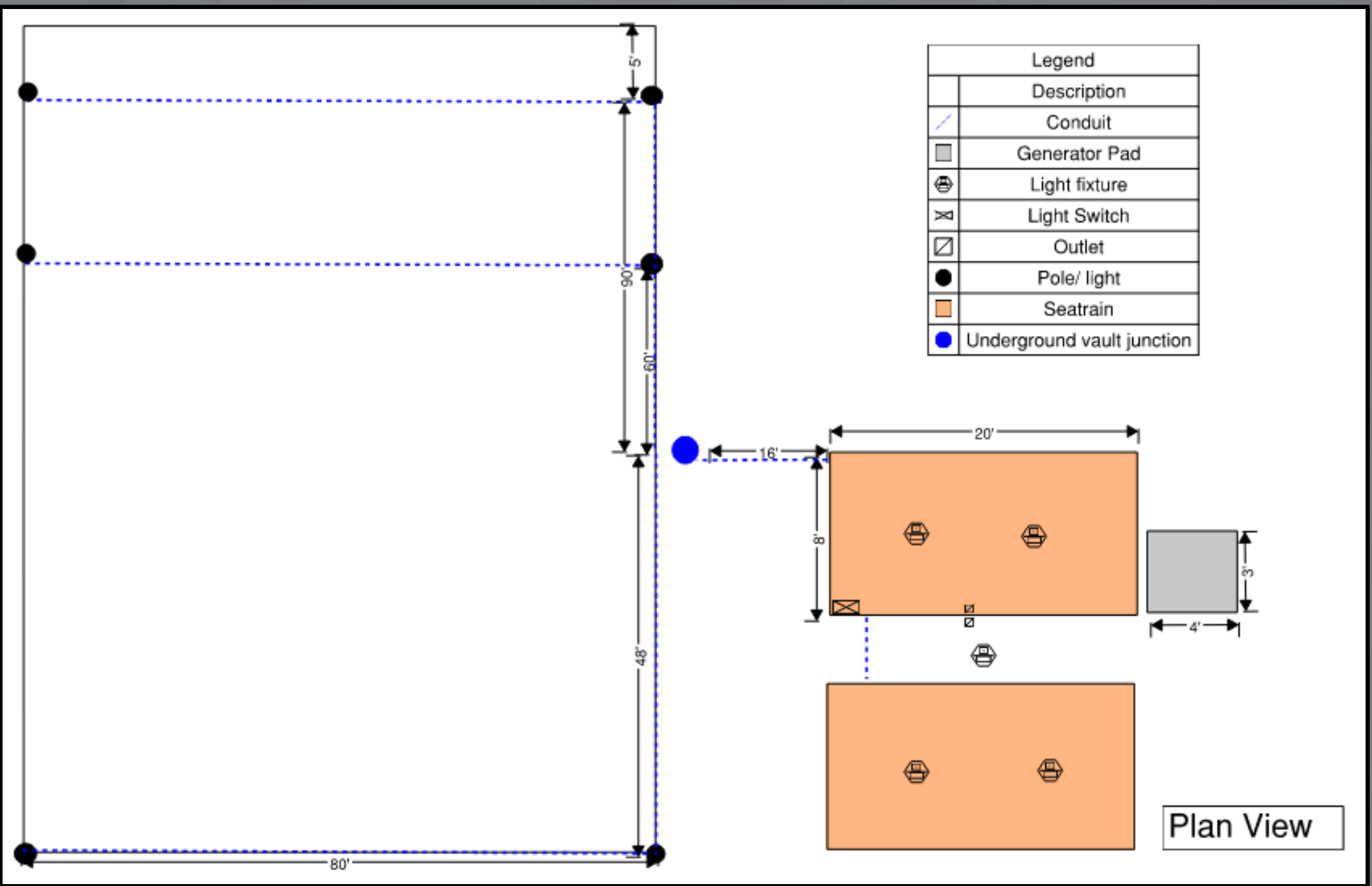


Paso Robles Police Department Shooting Range Electrical Installation



Seatrain Containers

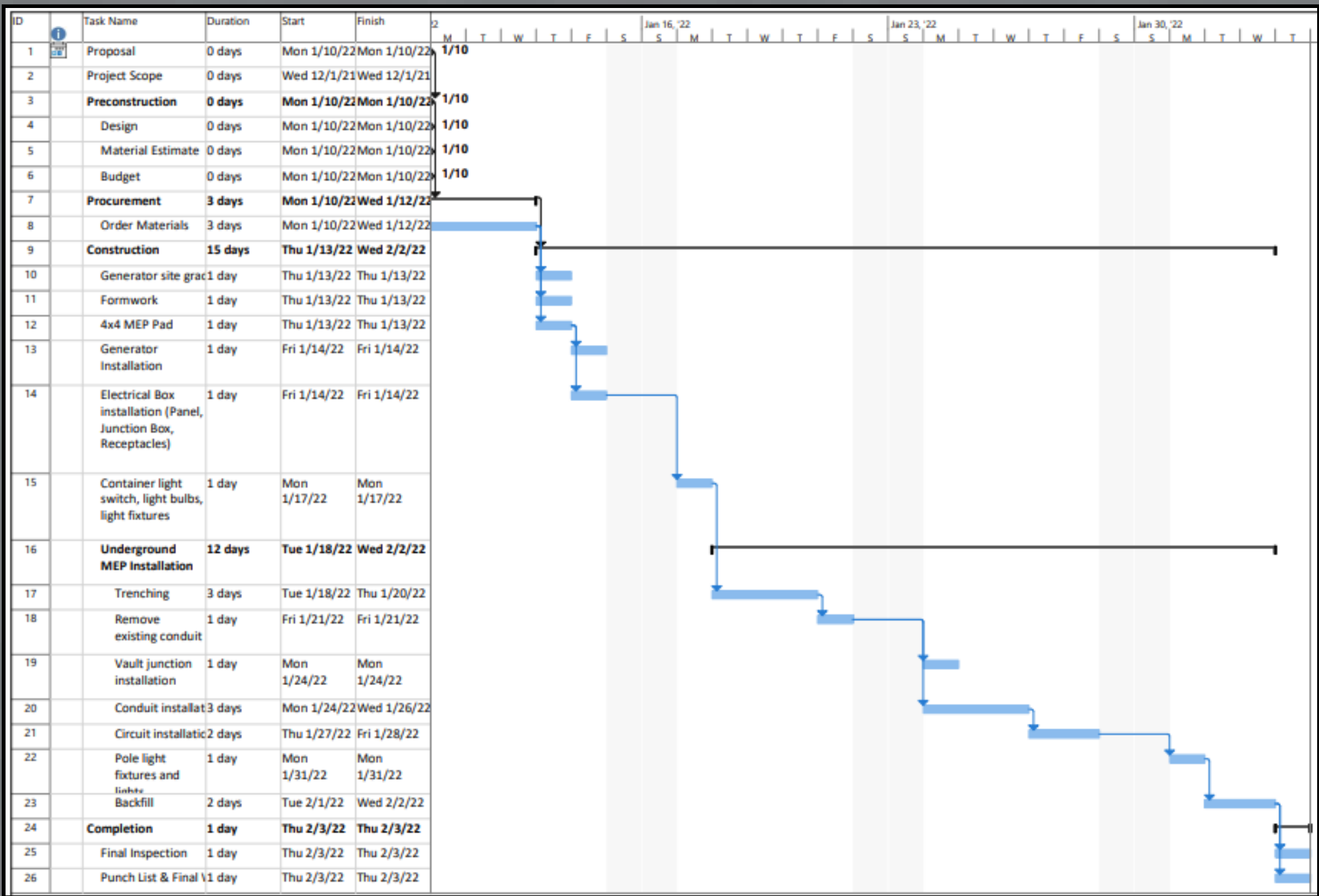


The Paso Police Department has a shooting range for police officers to practice and master using firearms. A shooting range is a crucial part of police officer training to ensure public safety and correct and accurate usage of safety weapons. The construction for the shooting range began in the spring of 2021 by Cal Poly students where they laid the foundation. I became involved to further the progress of the shooting range by installing an electrical system. For that phase to begin, I completed a pre-construction package that details the materials and steps for installation. The package includes a scope of work, schematic drawings of mechanical and electrical placement, budget, estimate, a construction schedule, and sequence. The design was created per the owner's request and follows state regulations with funding provided by the city of Paso Robles. The pre-construction services conducted will allow future Cal Poly Construction Management students to safely install lighting to provide adequate conditions for police officers to train during the evening.

Key Words: Paso Robles Police Department, Electrical, Cal Poly, Pre-Construction



Current Shooting Range Foundation



Paso PD Shooting Range Estimate						
Materials	Type	Units	Cost	Length (Ft)	Cubic Feet	Total Cost
Formwork	2"x6"x8'	2	\$6.34	16		\$12.68
Quikrete			\$0.00		32	\$0.00
Generator	6500w	1	\$0.00			\$0.00
Generator steel box encasing		1	\$0.00			\$0.00
Padlock		1	\$17.00			\$17.00
S.O. copper cable	120V	1	\$96.50	10		\$96.50
Breaker panel 60 amp	2 space 4 circuit	1	\$25.40			\$25.40
1 1/4" Conduits	*cost per 100'		\$160.55	475		\$762.61
Receptacles	15 amp	2	\$0.77			\$1.54
Container light bulbs	60w	5	\$7.77			\$7.77
Container light fixtures		4	\$1.58			\$6.32
Dimmable light switch	single pole	1	\$23.37			\$23.37
Light switch (for containers)	15 amp	1	\$3.97			\$3.97
2 switch light switch cover		1	\$1.47			\$1.47
Ceiling junction box	4"x4"x4"	1	\$13.60			\$13.60
Vault junction	7"x7"x5"	1	\$50.00			\$50.00
Range circuits	20 amp 12 AWG THHN	2	\$125.00	475		\$125.00
Dimmable light bulbs for poles	200w	6	\$10.78			\$64.68
Pole light fixtures		6	\$253.35			\$1,520.10
Inflation	18%					\$491.76
Total						\$3,223.77
Equipment						
Trencher		2	\$113.00			\$226.00
Manual Tamper		3	\$10.00			\$30.00
Material & Equipment Total						\$3,479.77

Shelby Prosch
650-995-3717
sprosch@calpoly.edu