

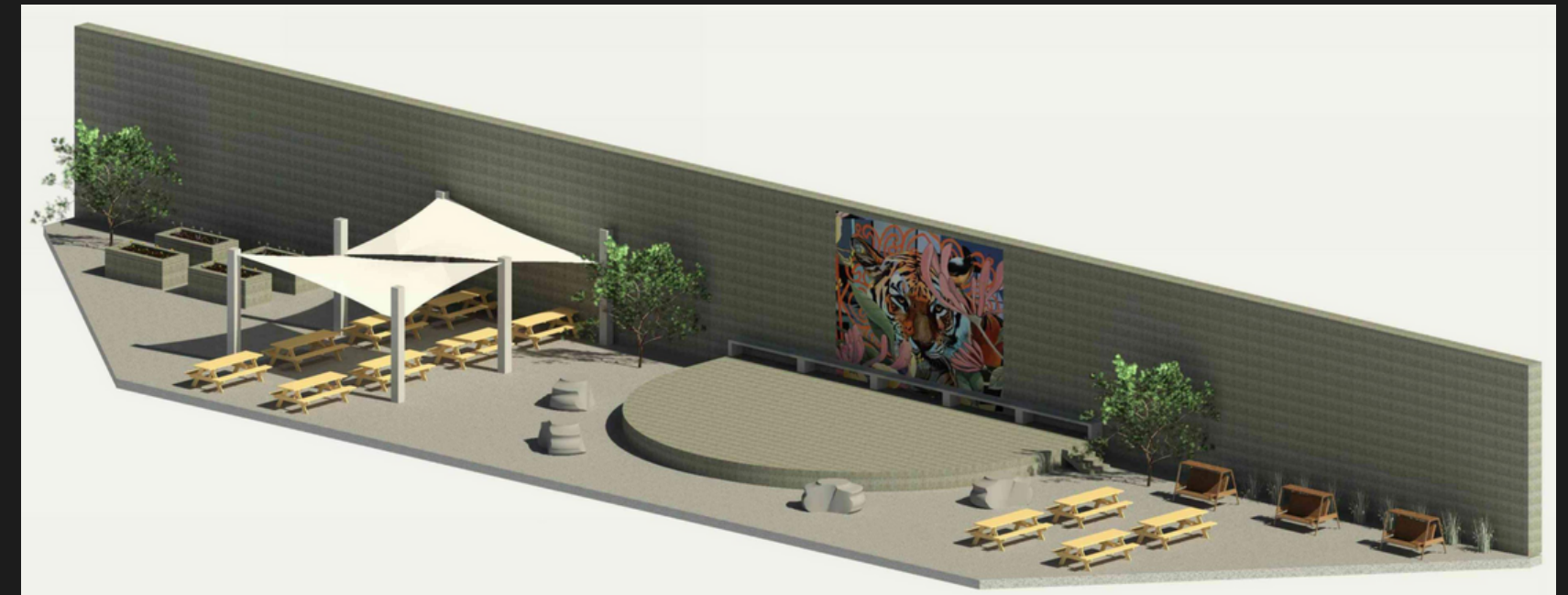
PRECONSTRUCTION PLANNING

TERRA NOVA OUTDOOR DEVELOPMENT

PRESENTATION BY AMANDA KAESLER

Project Description

This project involved the preconstruction planning of an outdoor space at Terra Nova High School in Pacifica, Ca. The project involved the production of three separate proposals at a high, moderate, and low-cost point. Each proposal included a conceptual design, takeoff, estimate, and model renderings. To create the conceptual designs and estimates, several programs and outside sources were utilized, including Revit, Bluebeam, RS Means, and Precision Estimating Services. The end designs included varying combinations of outdoor picnic seating, site boulders, a concrete stage, mural, and raised planter beds. The resulting proposals outline the expected project costs for each design as well as, defined the include project exclusions and design assumptions for the projects.



Have any questions?
ajkaesler4@gmail.com