

# CM MEMBER OF SLOCOE PEACE CONFERENCE CENTER FEASIBILITY STUDY



Jack Reynolds - Construction Management  
Roxie Peterson - Industrial & Manufacturing Engineering  
Timothy Scheuermann - Industrial & Manufacturing Engineering  
Alden Glassey - Industrial & Manufacturing Engineering  
California Polytechnic State University, San Luis Obispo



## Abstract

This project consists of the parking design and estimate portion of a whole feasibility study conducted by an interdisciplinary team. The interdisciplinary team consisted of three senior undergraduate industrial engineering students, and one senior undergraduate construction management student. This feasibility study was conducted for the San Luis Obispo County Office of Education (SLOCOE) to determine if it is feasible to construct a new, 400-person conference center on a site in San Luis Obispo, CA. The complete study includes analyses of the following topics: economic, utilities, traffic/road, approval from Chumash Tribe, social/historical, climate, geological, vegetation and wildlife, noise and pollution, parking, mandatory findings of significance, permits and approvals, and compliance with California Environmental Quality Act (CEQA). For the feasibility study to move along, the team needed to complete a parking design according to San Luis Obispo building code. This design would give the client an accurate representation of how much additional land would be required if this conference center were to be constructed. In addition to the parking design, the team completed a labor and material cost estimate for the parking lot to input into the economic analysis for the whole project.

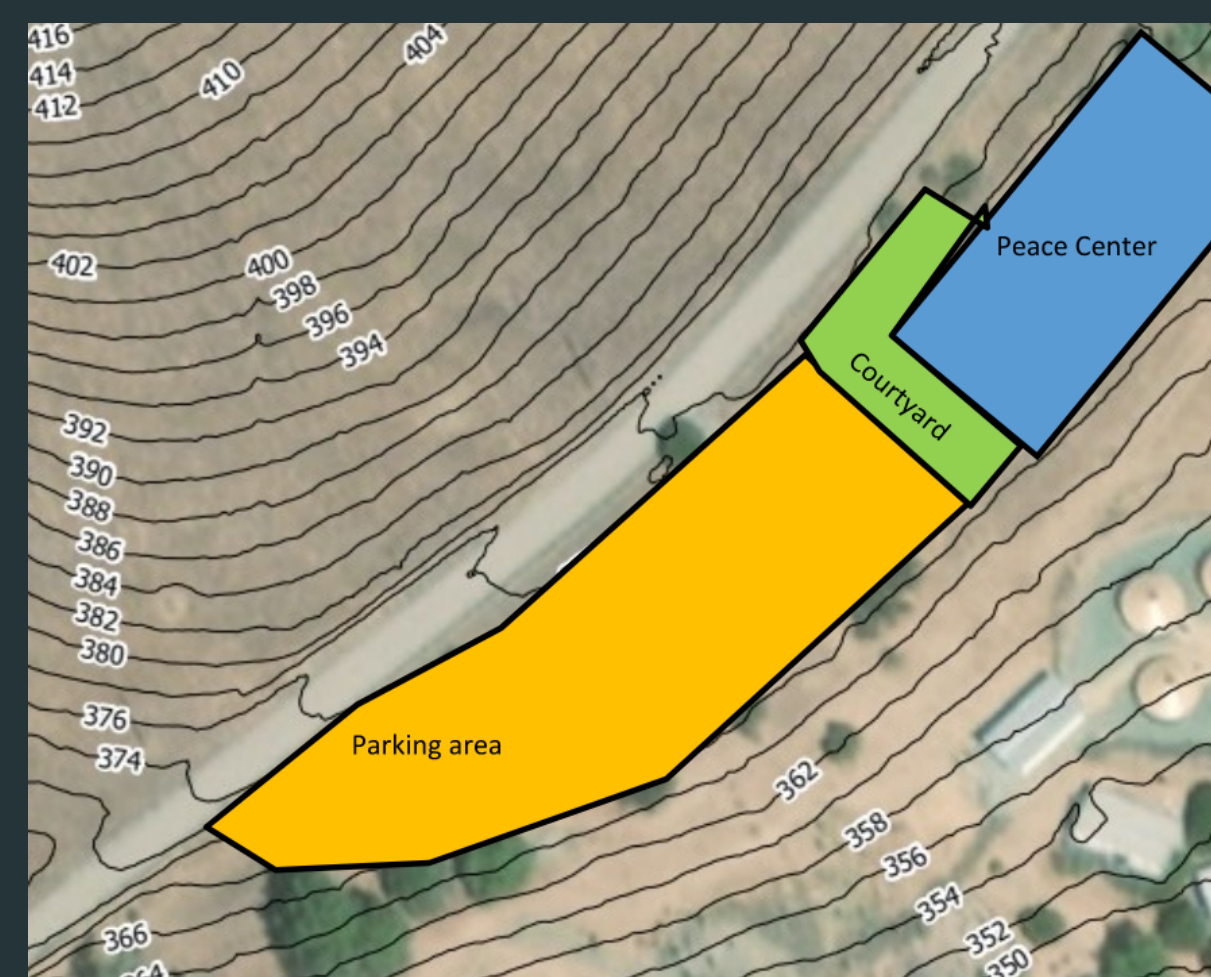
**Keywords:** Feasibility Study, Interdisciplinary Project, Parking Lot Design, Estimate, Parking Lot Construction



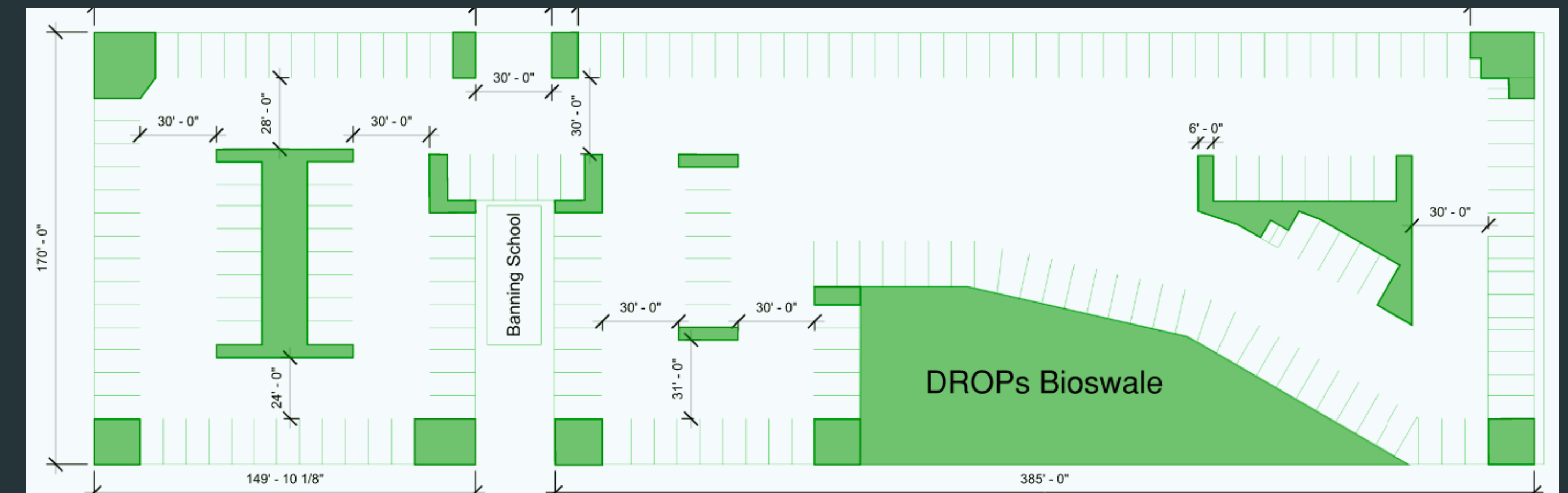
Current Conference Center



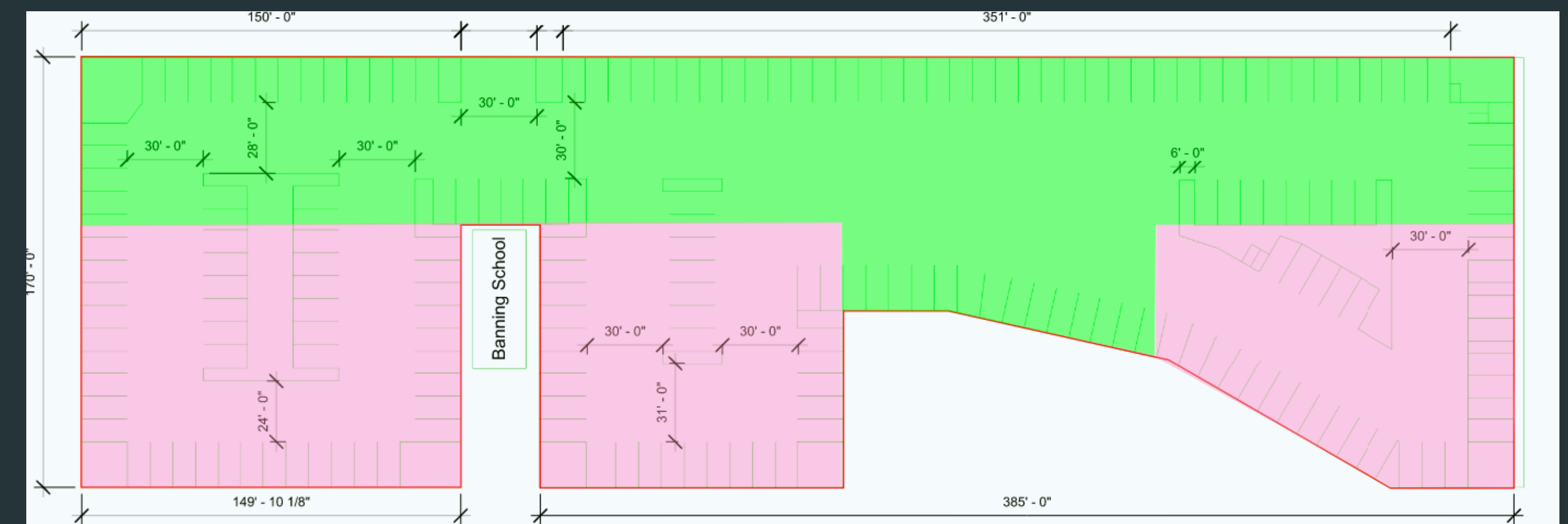
Rendering Of Proposed Conference Center



Initial Site Footprint



190 Stall Parking Lot



Excavation Plan

## PARKING LOT ESTIMATE

- Sitework
  - Importing soil: **\$154,280**
  - Excavation: **\$4,500**
  - Rough and Fine Grading: **\$14,546**
- Paving
  - 6" Paving over 6" Class II Base: **\$556,386**
- Lot Striping
  - Standard and Motorcycle Stall: **\$925**
  - ADA Stall & Access: **\$600**
  - Signage: **\$1083**
  - Fuel Efficiency: **\$3,000**
- Miscellaneous
  - 6"x12" Curb: **\$35,918**

**Total Parking Lot Cost:**  
**\$772,038**