

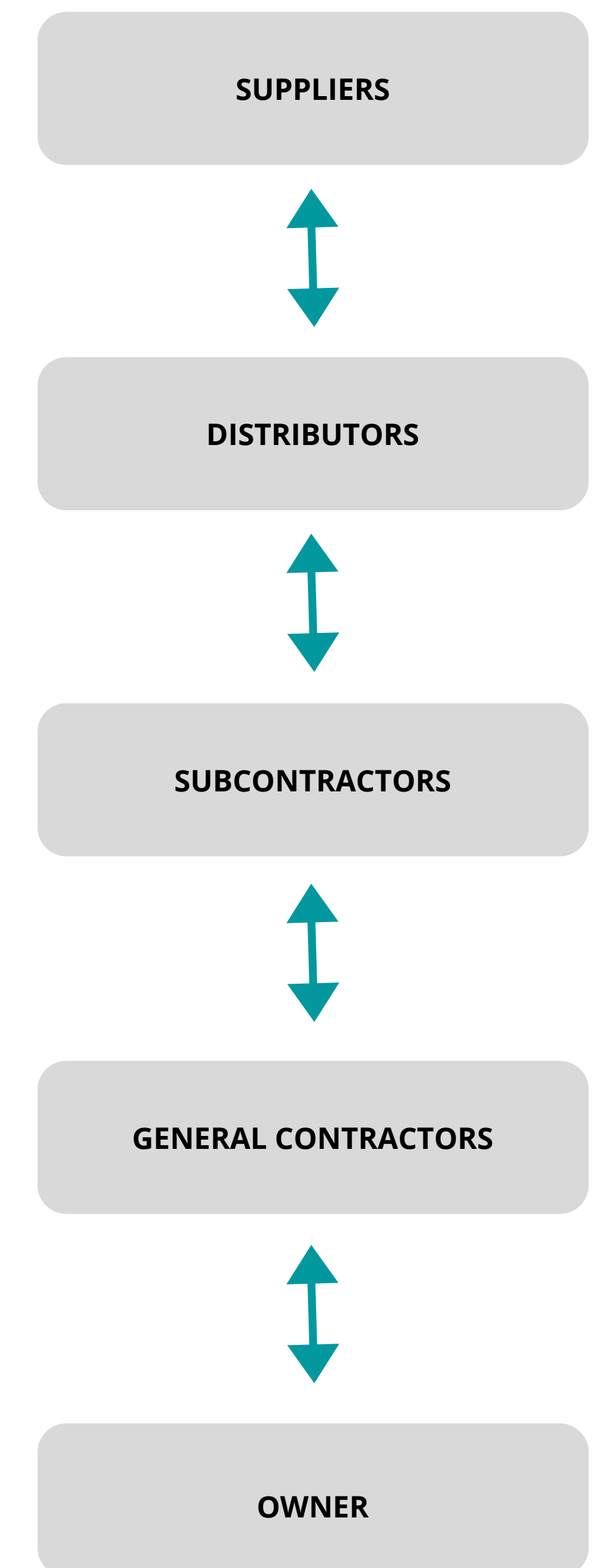
Supply Chain Management: Fragmented Adoption in Practice

HISTORY

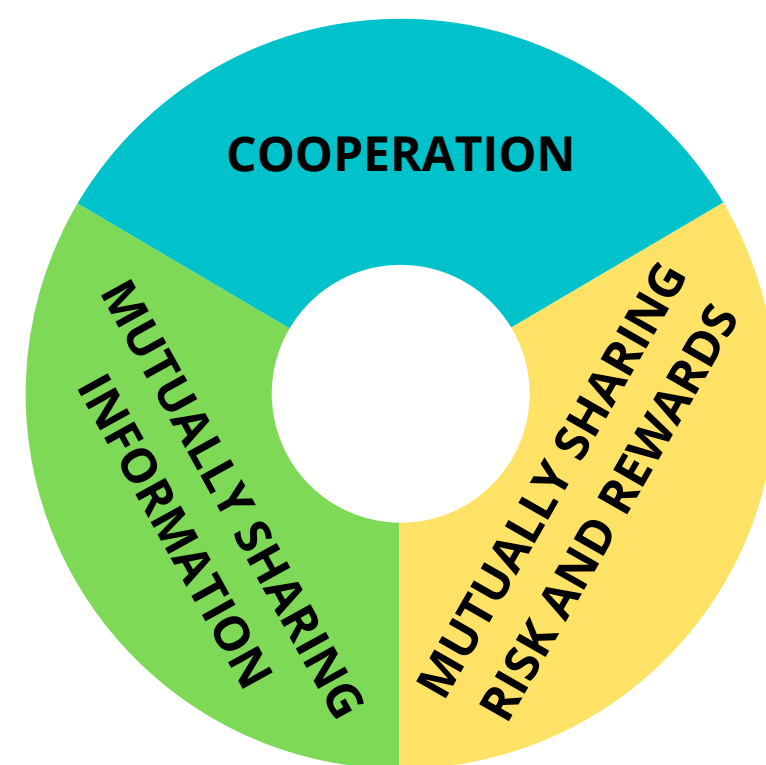
- Started by Toyota Production for JIT system for the manufacturing industry
- Has existed since the 1950's to transform the focus from viewing parts of a supply chain to and individual control of each stage of a product to control of the total flow of production

Abstract: Everyday the construction industry develops new ideas and theories toward innovation in increased efficiency and quality on its projects. One method is supply chain management which focuses on the relationships between partnerships along the supply chain. The overall supply chain typically contains short supply chains that are dismissed upon project completion. Some companies have partially adopted the theory into their work practices but have been unable to fully adopt the theory as a whole. There have been many theories as to why supply chain management has not been able to be fully adopted and the research is aimed to understand the complications associated with it. The complications presented from the research include market conditions, competition and fairness, and workforce limitations. Insights from research gain perspective in how full adoption has been limited, the partial adoption enables partnerships to benefit multiple companies and increase productivity, prevent delays, and reduce additional costs.

MEMBERS OF THE SUPPLY CHAIN



JOINT PLANNING REQUIRES



BARRIERS FOR SUPPLY CHAIN MANAGEMENT IN CONSTRUCTION



VISION: INTEGRATED COMMUNICATION & EFFICIENCY AMONG ALL PARTS OF A SUPPLY CHAIN

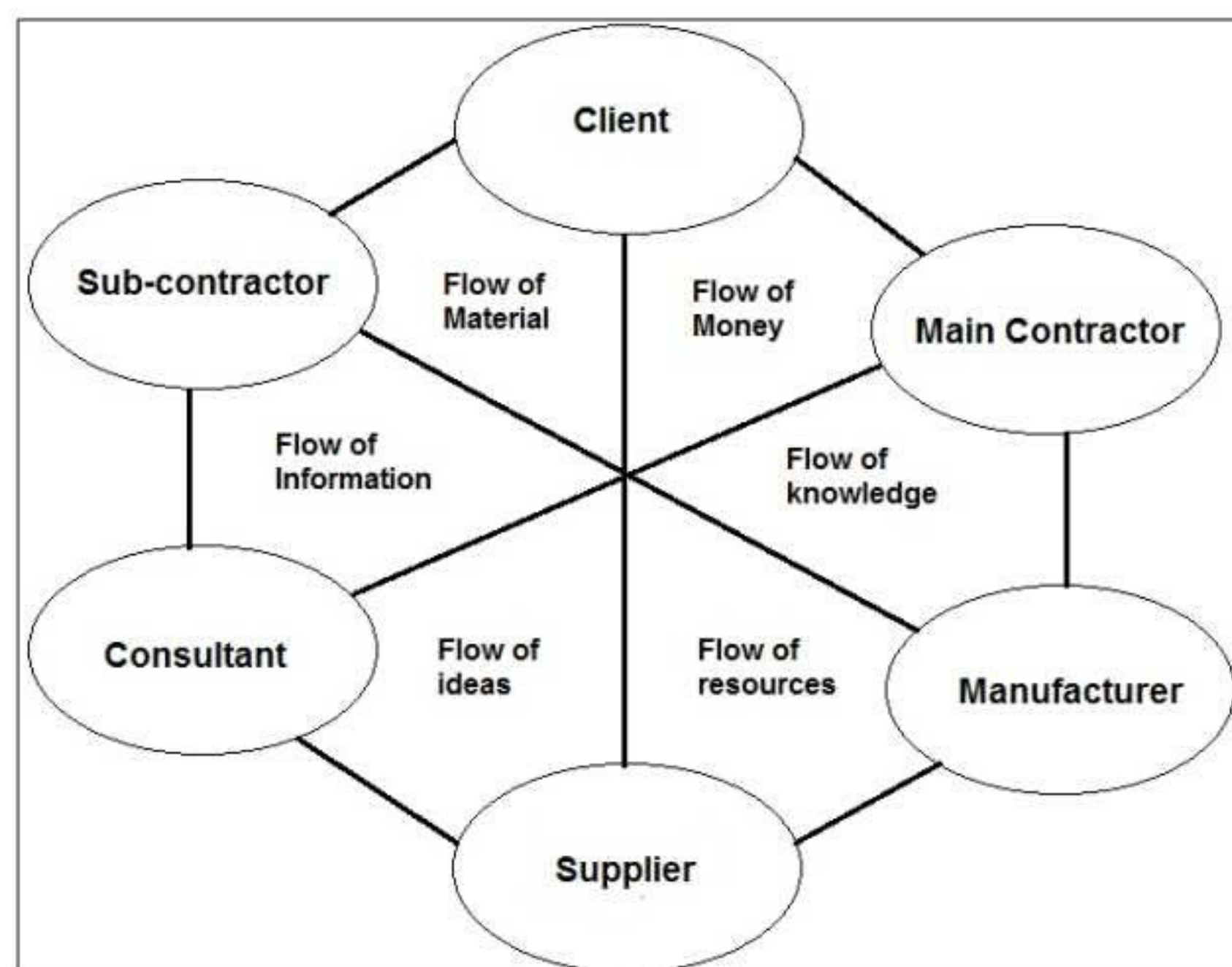
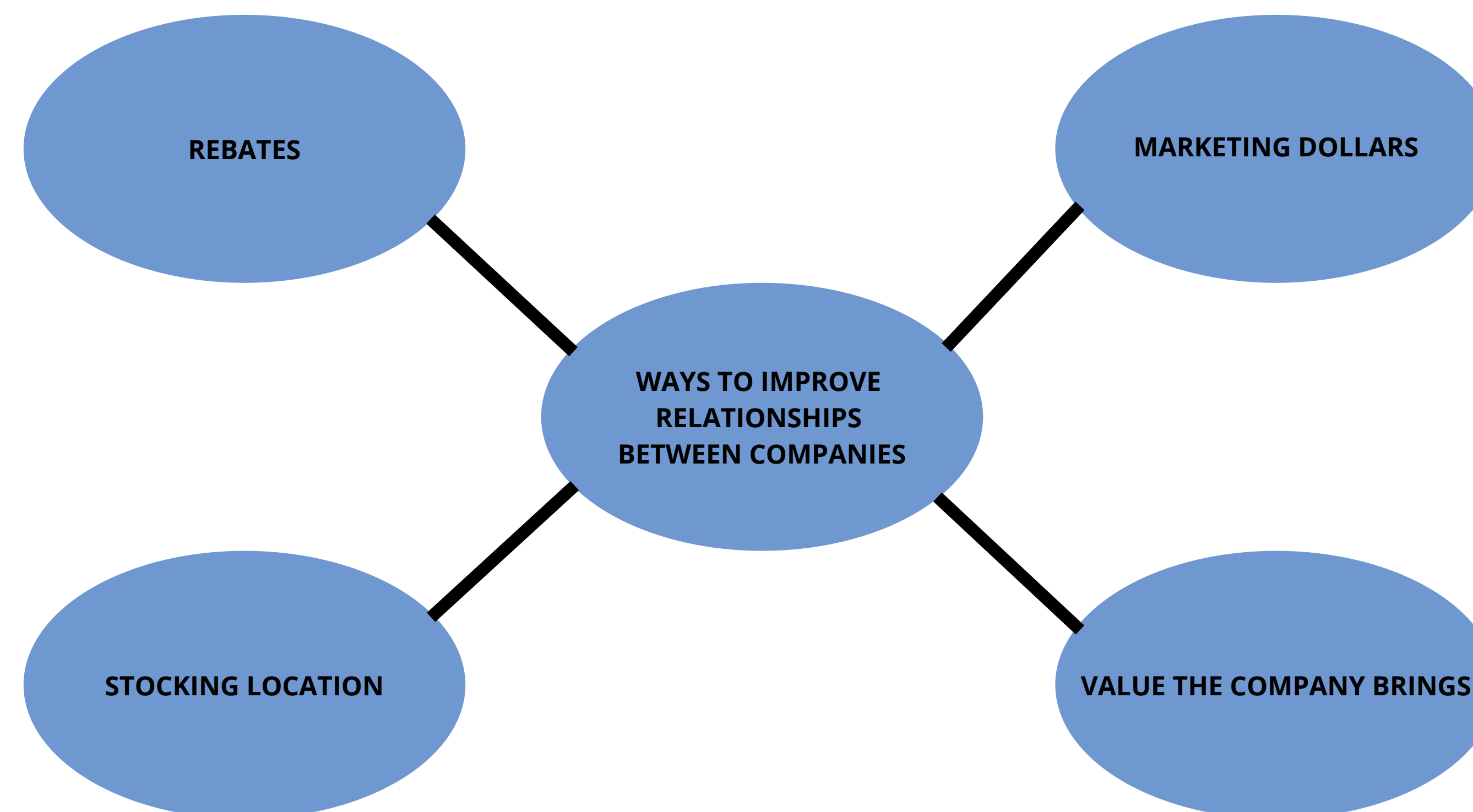


Illustration by Seng, L & Riazi, S & Nawi, M & Ismail, R



PARTIAL ADOPTION

- The barriers play a significant role in the market and competition ensures equality
- Full adoption would create more challenges than benefit the industry