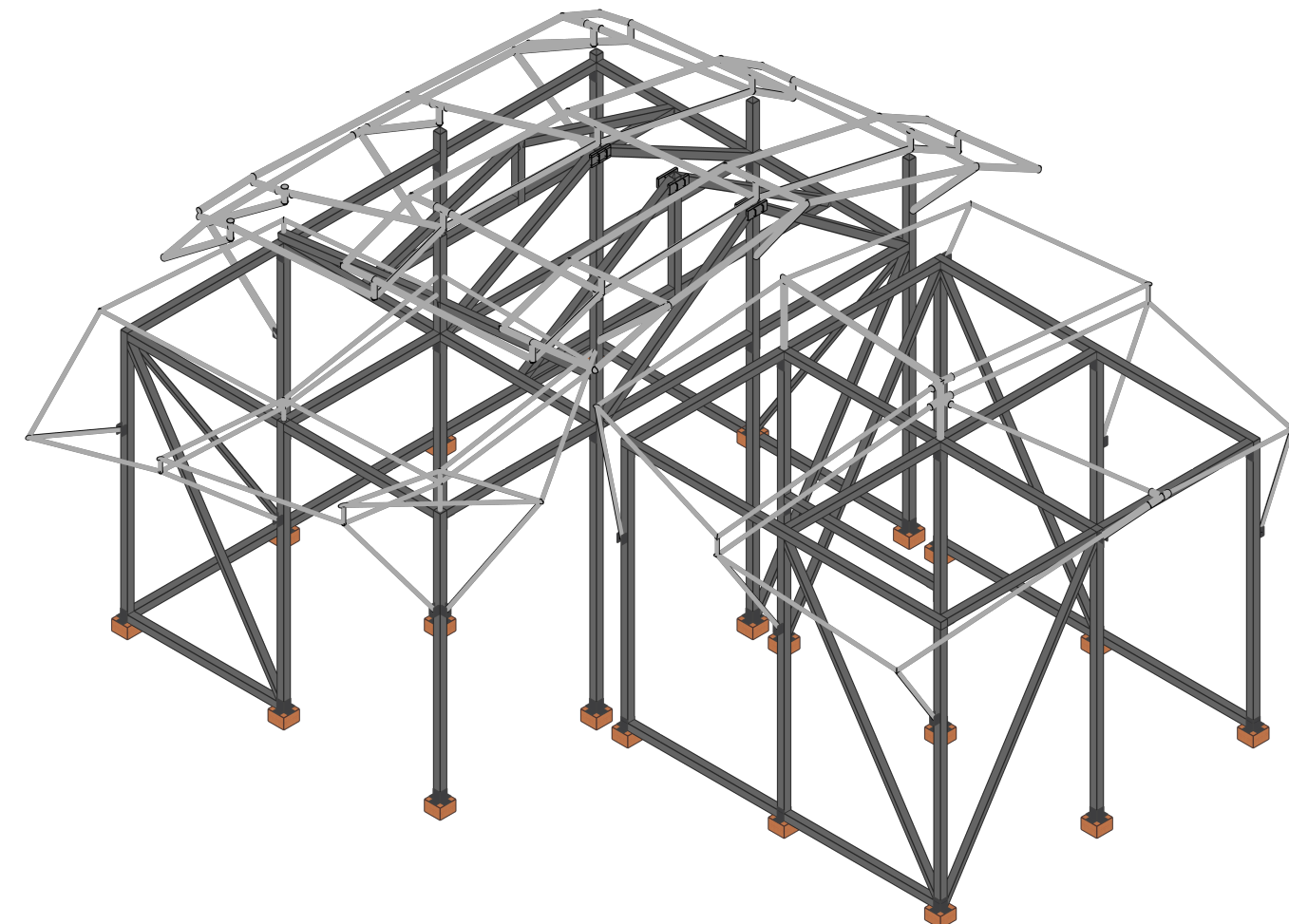
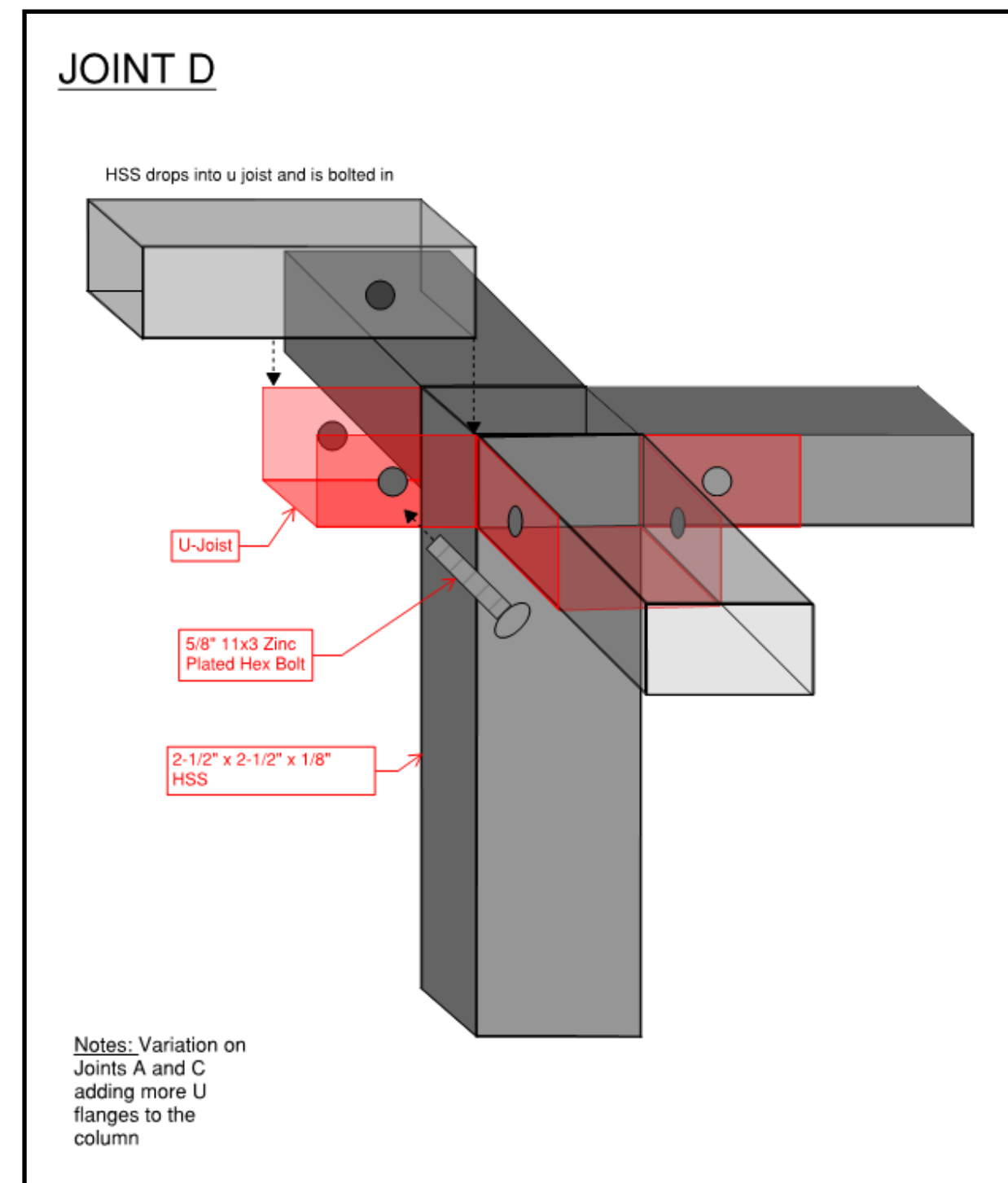


Interdisciplinary Studio Pavilion [ISP] 2019

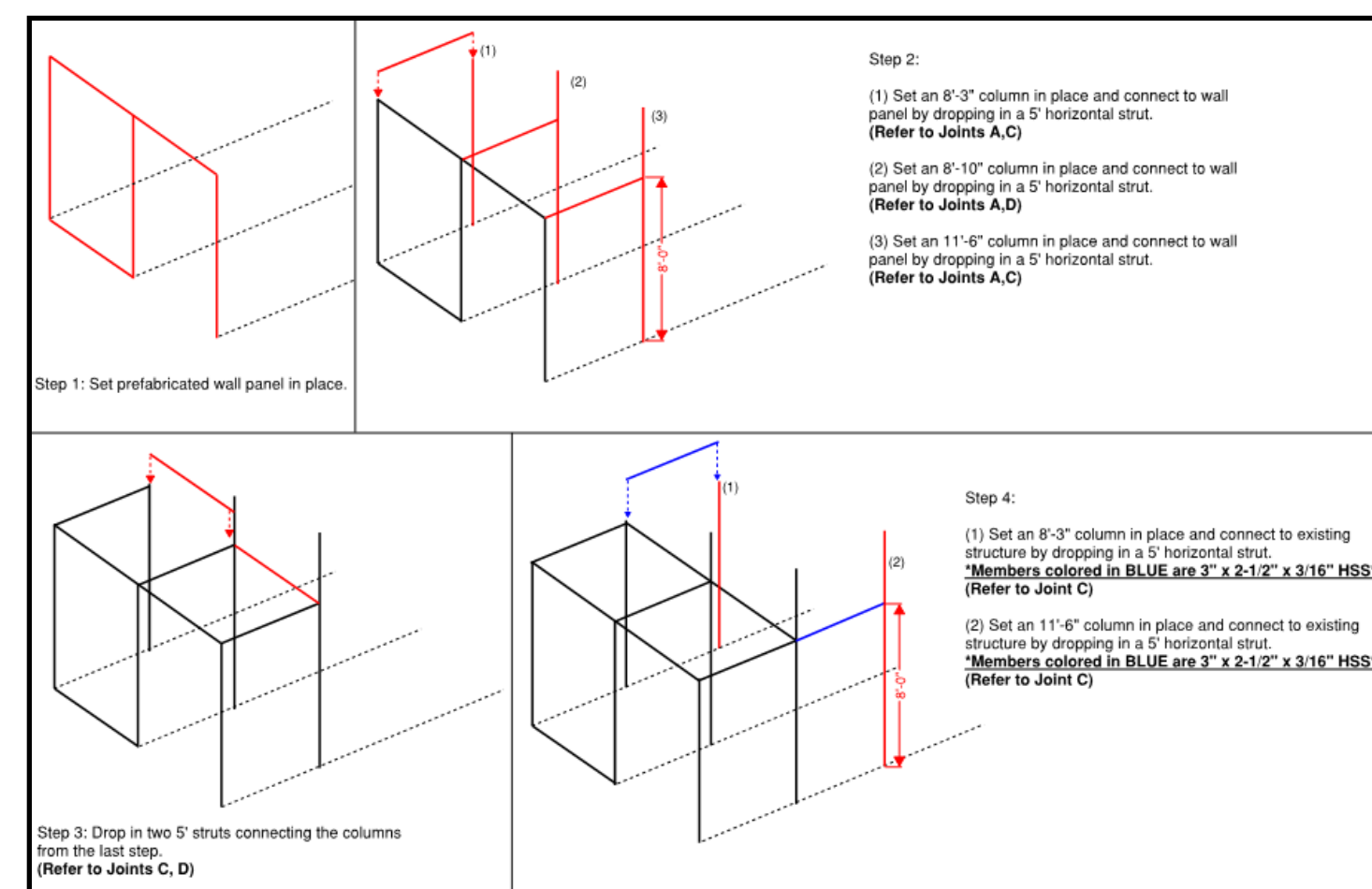
Portable Pavilion for Wine History Project



3-D Model of structure



Joint detail



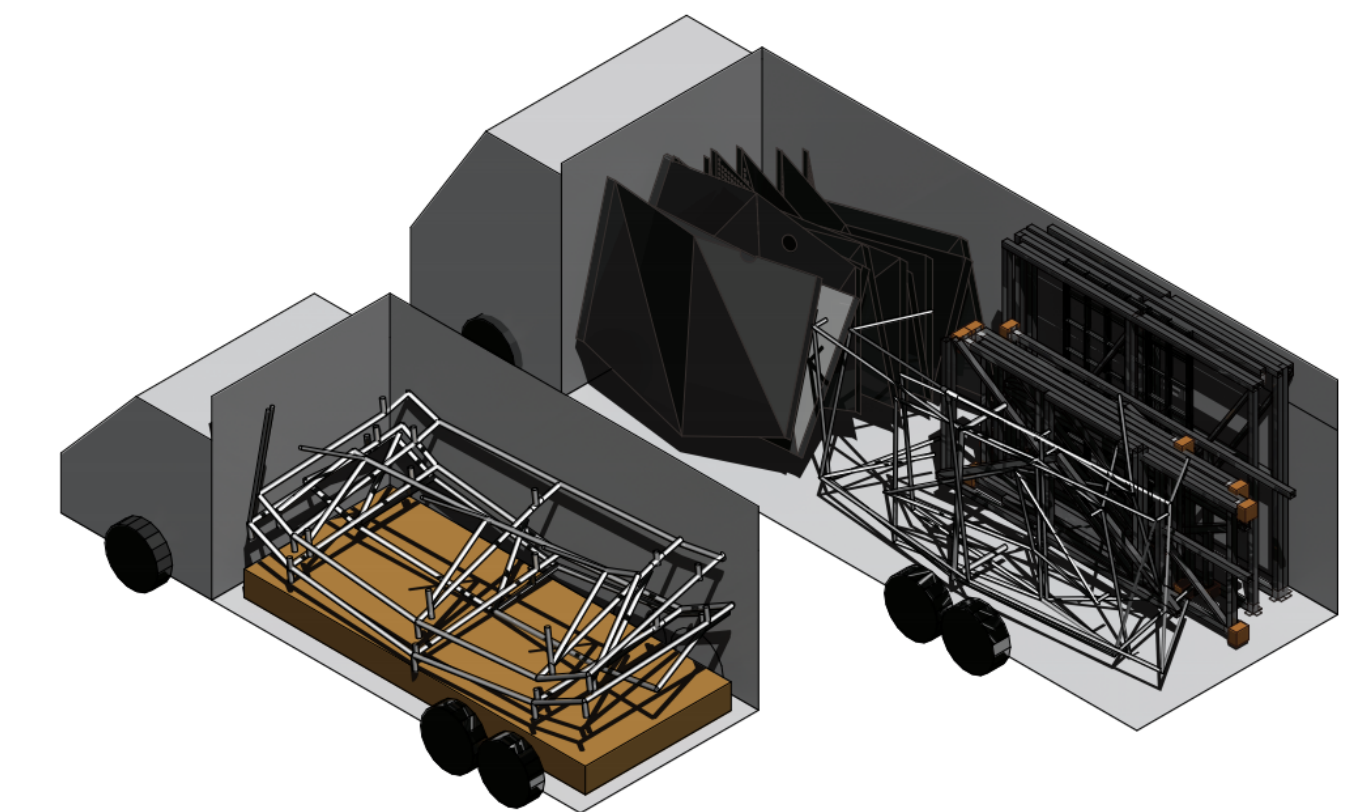
Assembly diagram example

Historically Cal Poly's motto has been 'Learn by Doing' and the College of Architecture and Environmental Design (CAED) is one of the leading examples of this. Many students gain valuable hands-on and real-world experience through collaborative projects and assignments. Through this learn by doing philosophy and collaborative learning approach Cal Poly construction management, architecture and architectural engineering students worked together in 8 separate studio teams to design and construct a portable pavilion for the Wine History Project of San Luis Obispo County. Acting as a client they requested that we design a portable pavilion space that will be used to house historical artifacts relevant to the wine industry of San Luis Obispo county. This process involved the conceptual design and fabrication of the structure, including all details and relevant construction documents and estimates. As the construction management student assigned to the team my responsibility was to ensure that the final product can be constructed and dissembled by hand without the use of any cranes or special equipment at multiple sites. Working together in a collaborative IPD studio is representative of projects that many of us will be working on after leaving school and starting work full-time.

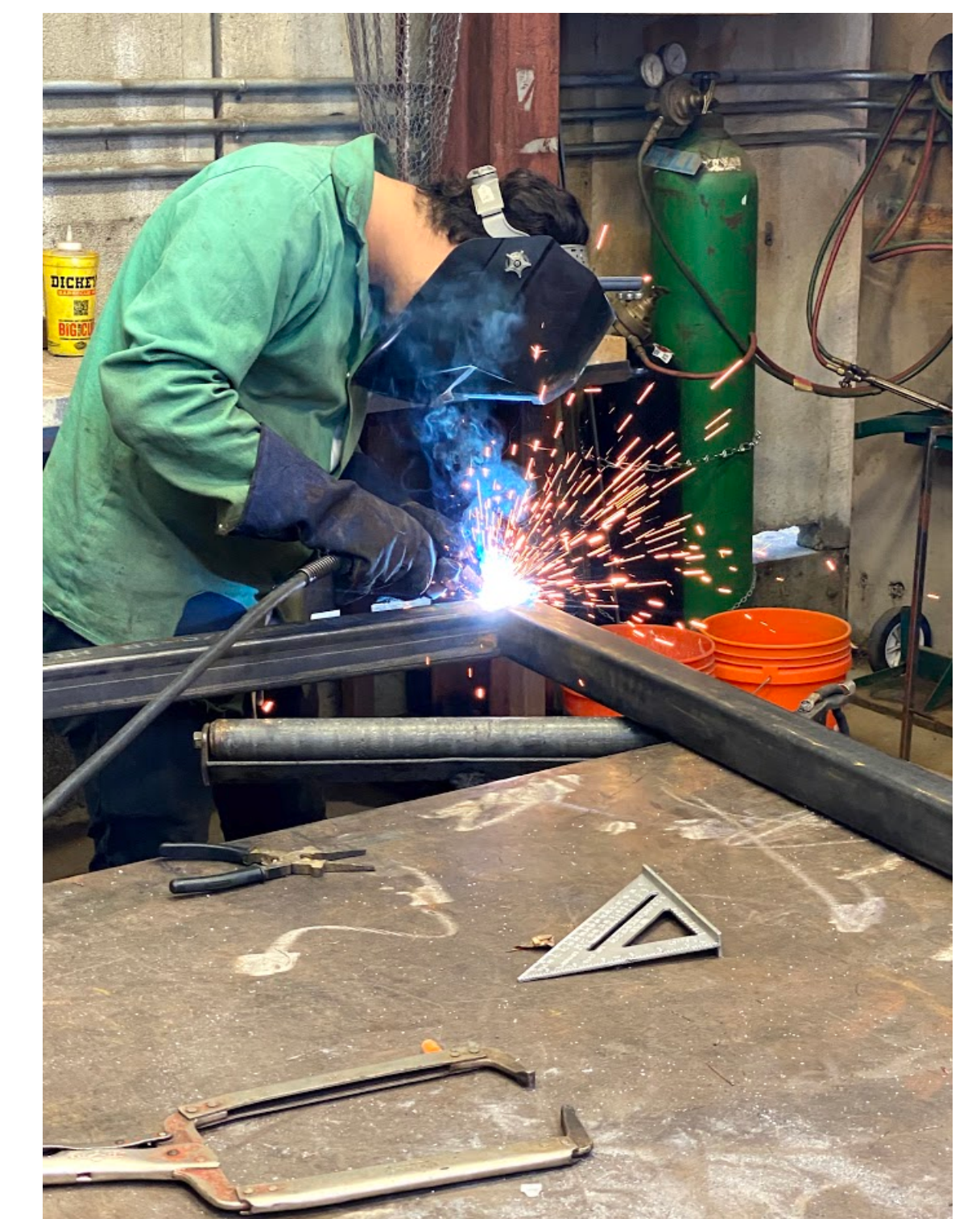
Key Words: IPD, Project Delivery, Construction, Collaboration, Architecture



Rendering of model at project site



Transportation Diagram



Fabrication of mock-up model

Albert Gutierrez
California Polytechnic State University, San Luis Obispo