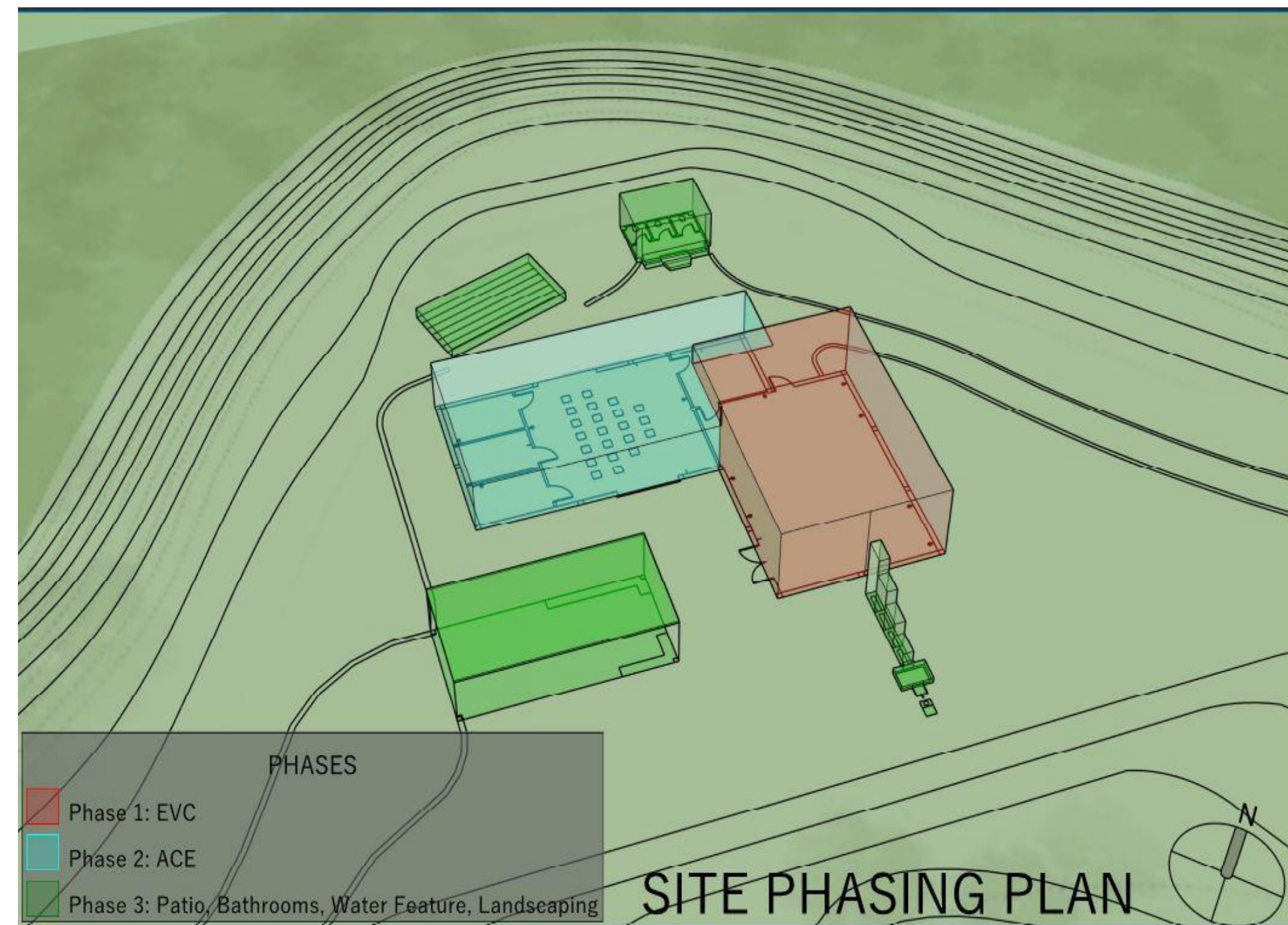




JOURNEYMEN INTERNATIONAL: RUBAGABAGA EVC & ACE RWANDA, AFRICA



ABSTRACT: The Rubagabaga Empowering Villages Center and Agricultural Center of Excellence is a multi-use one story building which will serve to enhance agricultural knowledge for the people of Kaseke Village in Rwanda, Africa. The site is located on the Rubagabaga River in a rural part of Northwest Rwanda. The overall goal of the Rubagabaga development program, headed by Empowering Villages, is to bring socio-economic improvement to the region. This project-based senior project was completed as an interdisciplinary effort between College of Architecture and Environmental Design students at Cal Poly, San Luis Obispo, and the non-profit humanitarian organization, Journeyman International. Mackenzie Dias, Julia De Hart, and Jenna Williams were a part of the project team.

PROJECT DELIVERABLES

SWPPP

Site Logistics

Site Phasing

Project Schedule

Construction Schedule

Final Estimate and QTO

Safety Plan

Hazard/Risk Analysis

Utilities Analysis

Feasibility Analysis

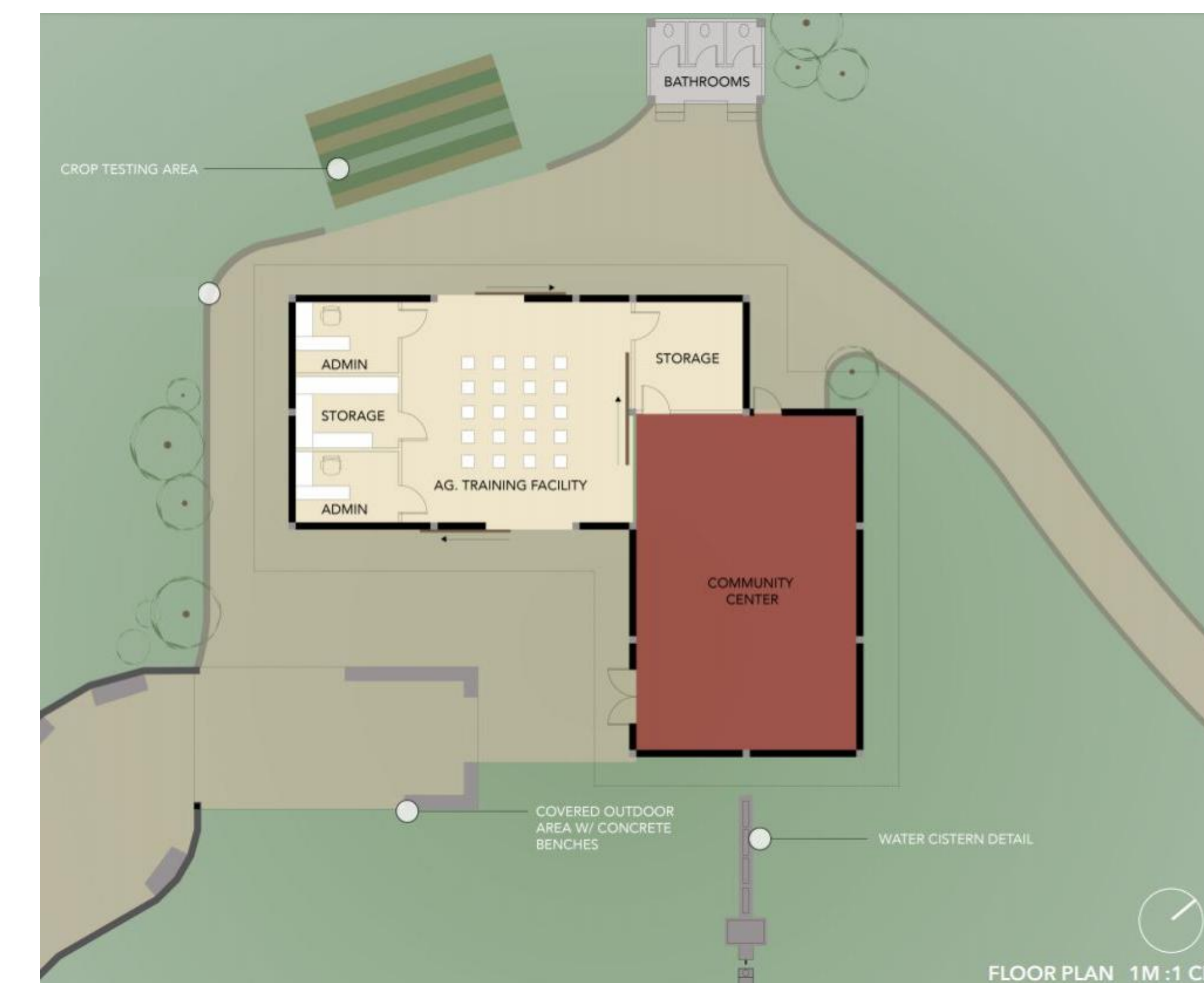
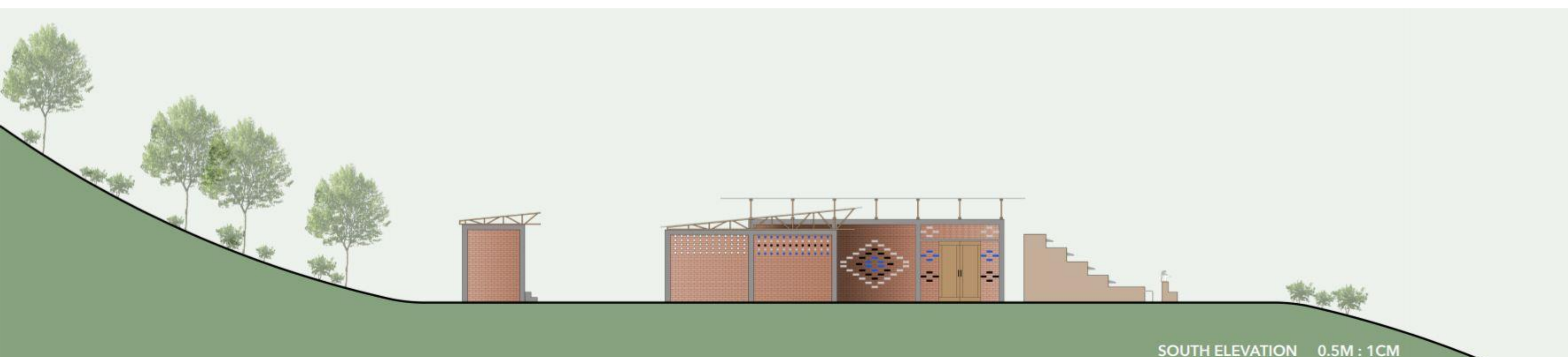
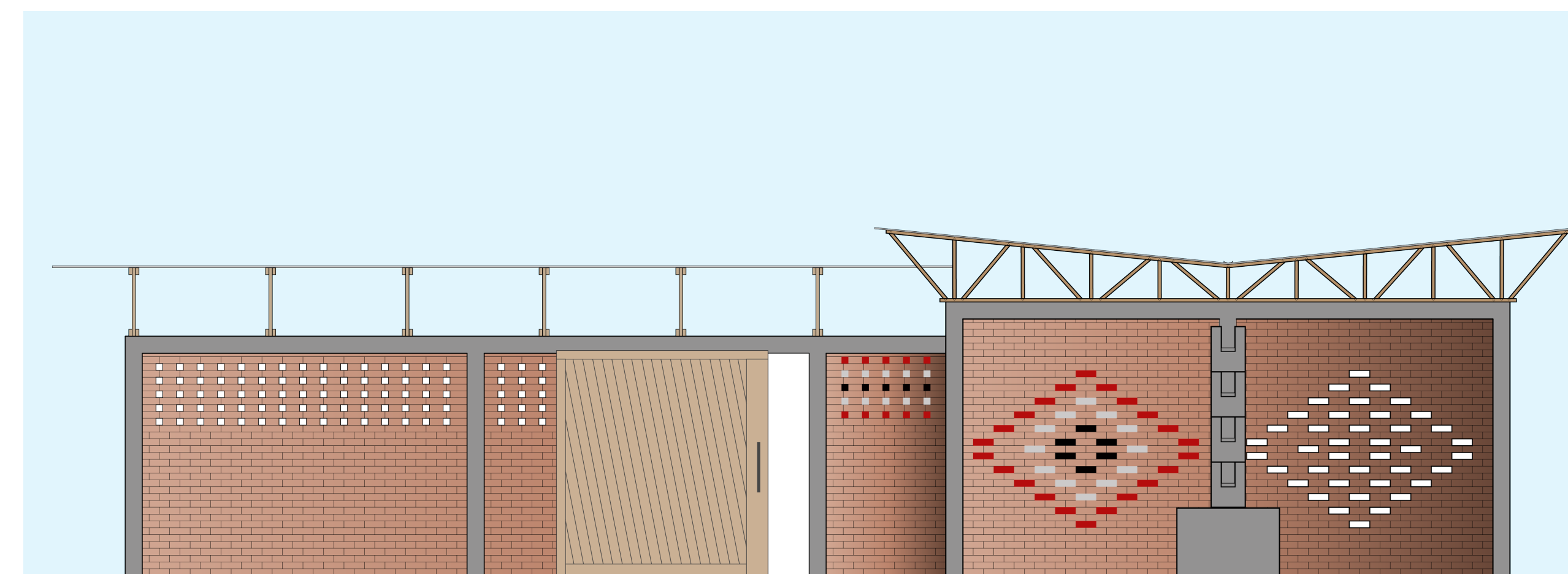
PROJECT DETAILS

Location: Kaseke Village, Rwanda, Africa

Facilities: Community Center, Classroom, Offices, Storage, Patio, Bathrooms

Duration: 10 Months

Budget: \$100,000



JAKE STOM
CALIFORNIA POLYTECHNIC STATE UNIVERSITY
CONSTRUCTION MANAGEMENT DEPARTMENT, SPRING 2019