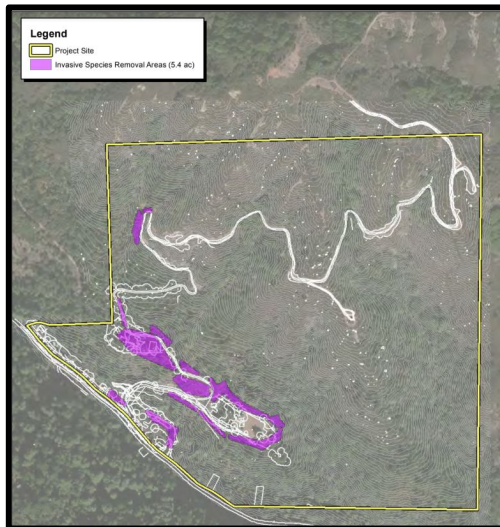


## Site Borders and Areas of Invasive Plant Species



# Environmental Requirements and its Impacts Upon a Project

Chase Flemmer

As the population of California continues to grow, urban areas are rapidly being developed into locations considered to be environmentally sensitive. In order to prevent extensive damage to our state's delicate ecosystems, environmental regulations are often enforced by local organizations during the course of impactful operations such as construction projects. No two jobs will possess the exact same specifications for dealing with this aspect of construction, and as such some will require more intense regulations than others. With this in mind, the case study that I will be reporting on is an example of a job requiring the more extensive end of regulations. This paper's objective will be to outline this specific project's details, requirements, and discuss how its intricate situation makes it a learning experience for future projects with a similar environmental scope.

**Keywords:** Environmental Requirements, California Red-legged Frog, SWPPP, EIR

## The Temperate Rainforest



The Conservation Center for Wildlife Care, located in Saratoga, CA.

Stormwater Prevention Plan Implemented to prevent runoff into the Saratoga Creek

## The California Red-legged Frog

