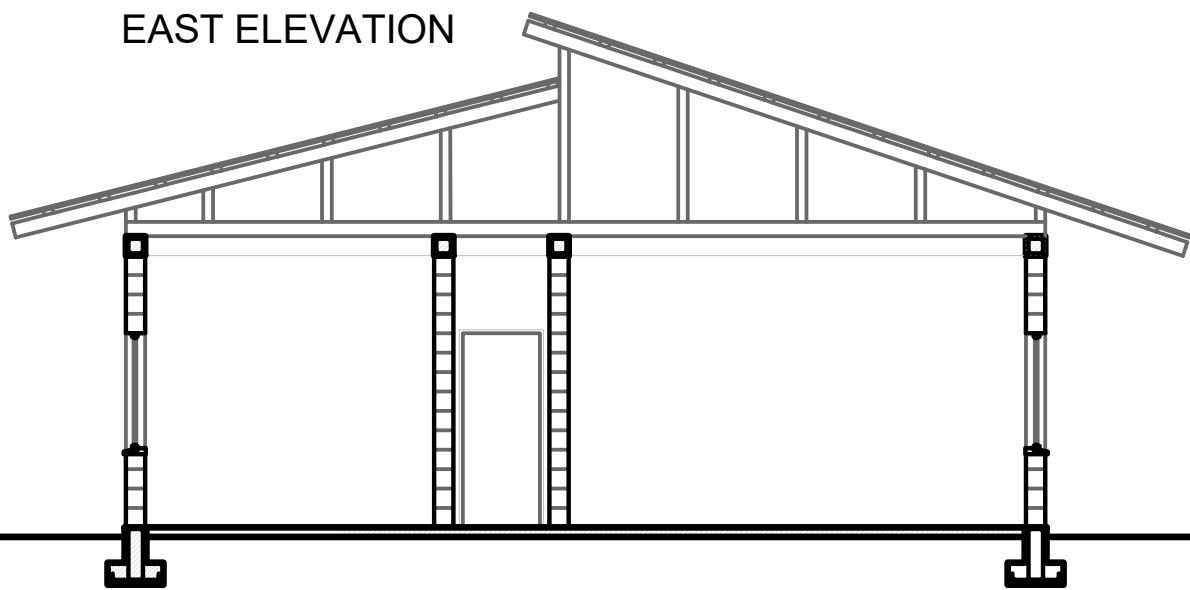
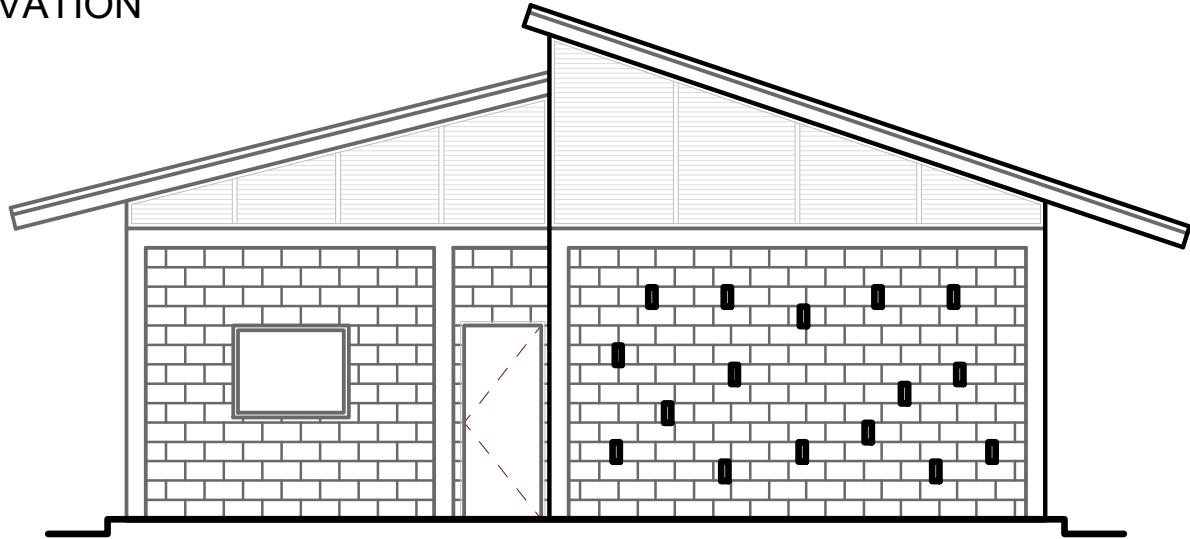
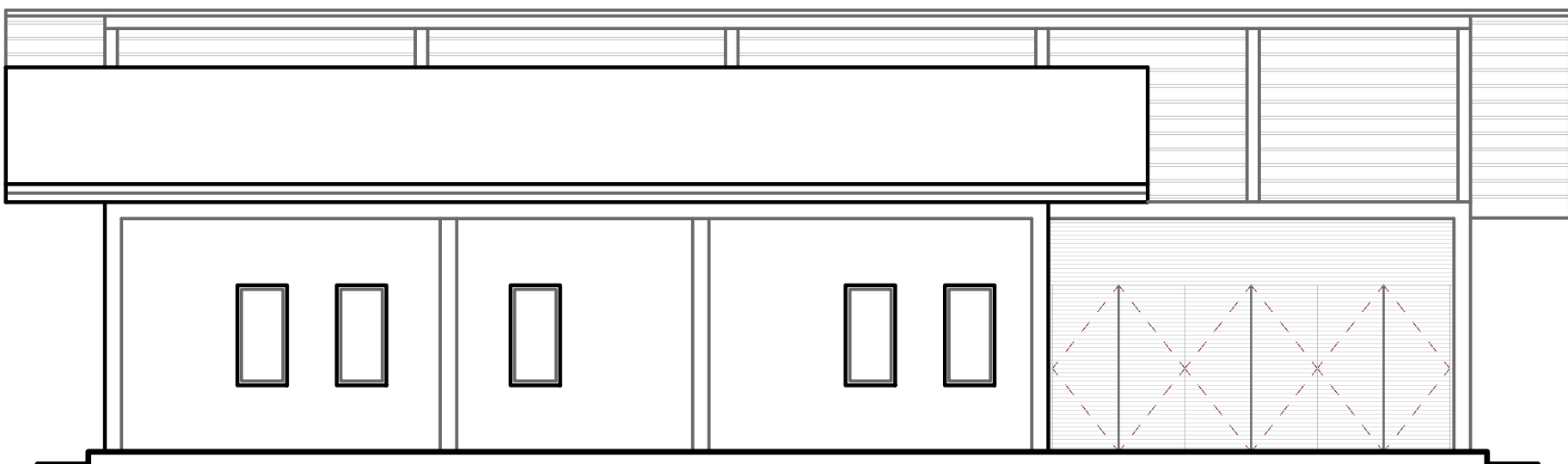
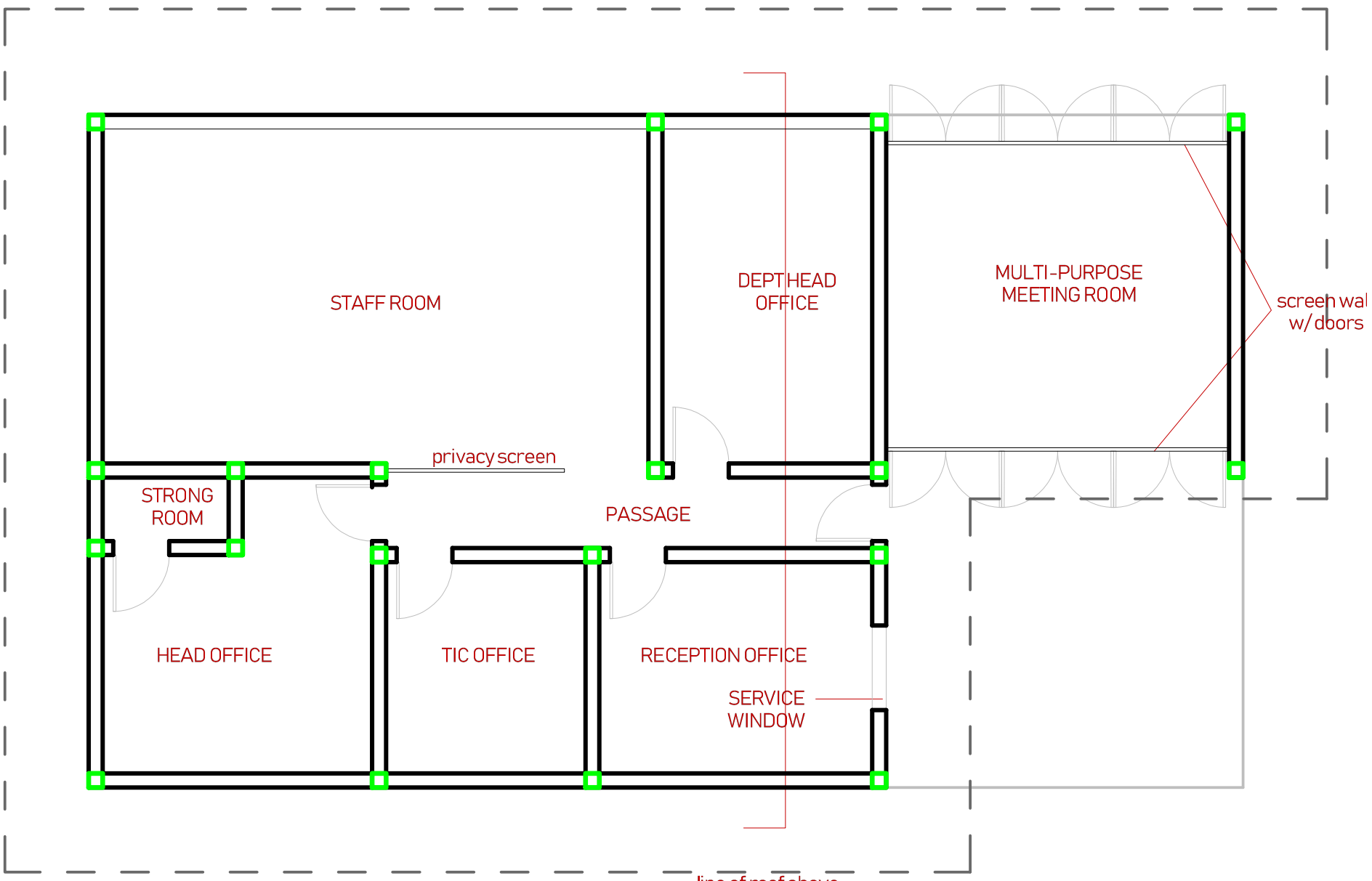
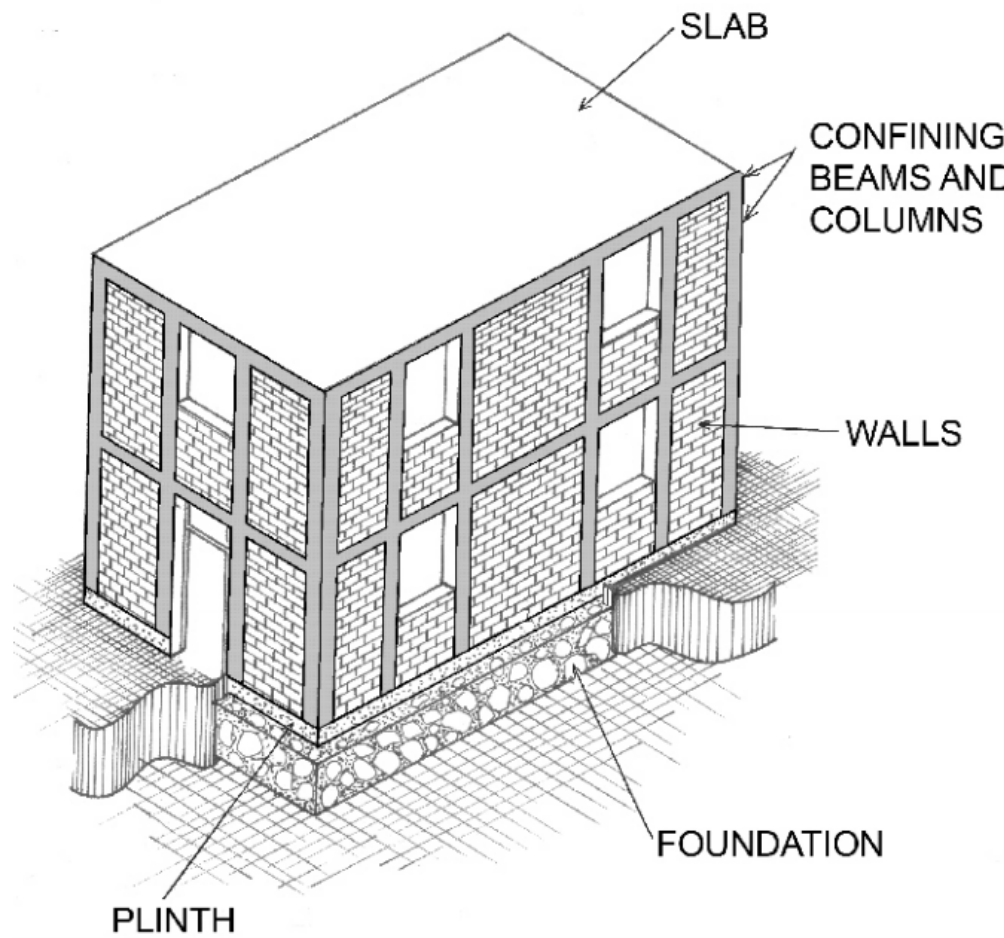


254.5 Square Meters



ADMIN BLOCK  
DRAWING NOT TO SCALE



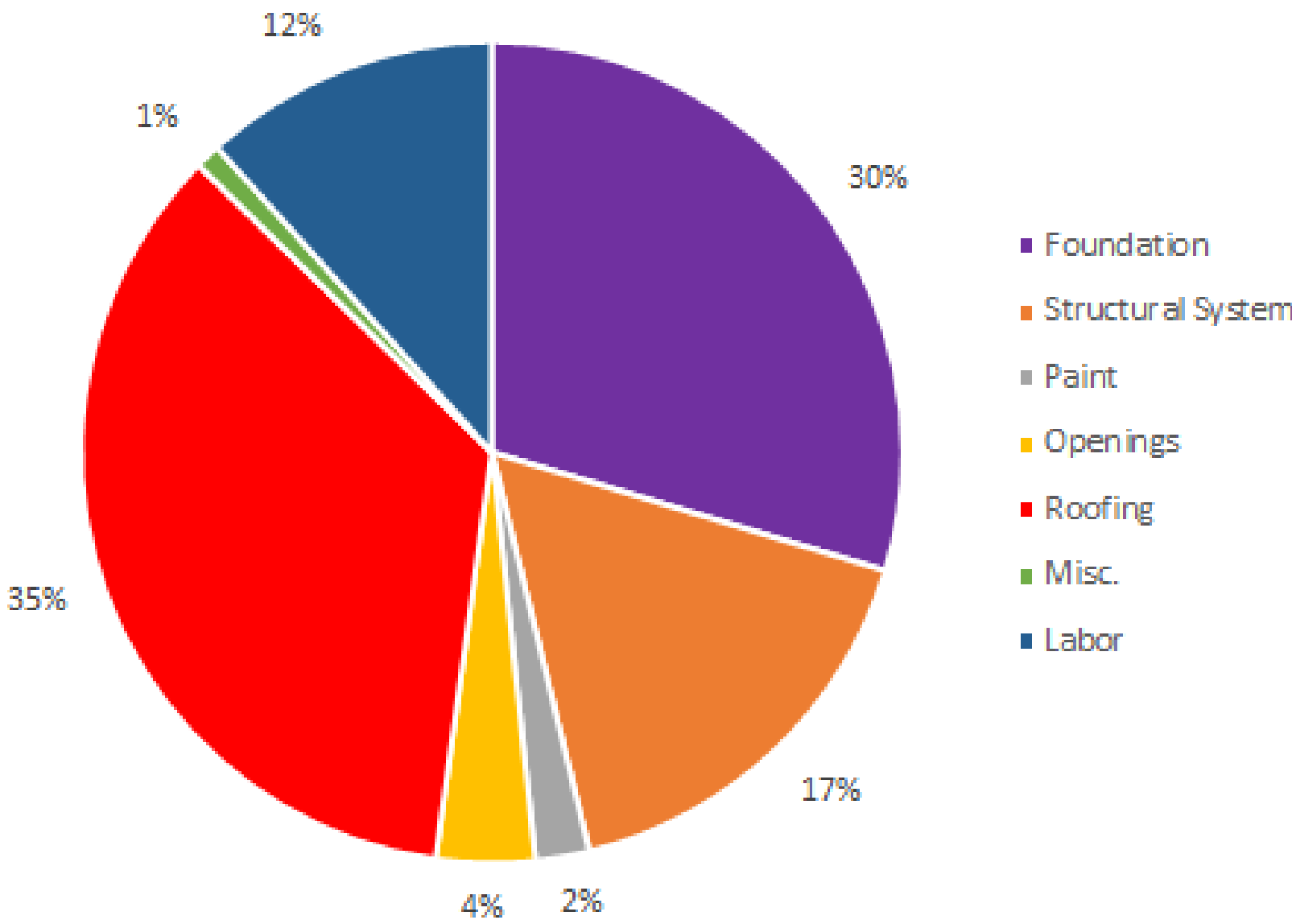
# Journeyman International: Zimbabwe Rural School Development Program

Adjusting to the construction codes and processes of a foreign country is a very complex and involved process. There are considerations for different materials, procedures, costs, requirements, potential tribal or cultural conflict, corruption, and many other potential obstacles and challenges to overcome. While this project was seemingly simple, inexpensive, and straightforward, there was a significant amount of obstruction from the government concerning a coup that limited the team’s ability to apply for permission to begin construction. Additionally, there were significant changes in the design and budget as the project progressed, delaying our start date. Ultimately, this project should serve as a case study to assist future projects in funding, design, and development.

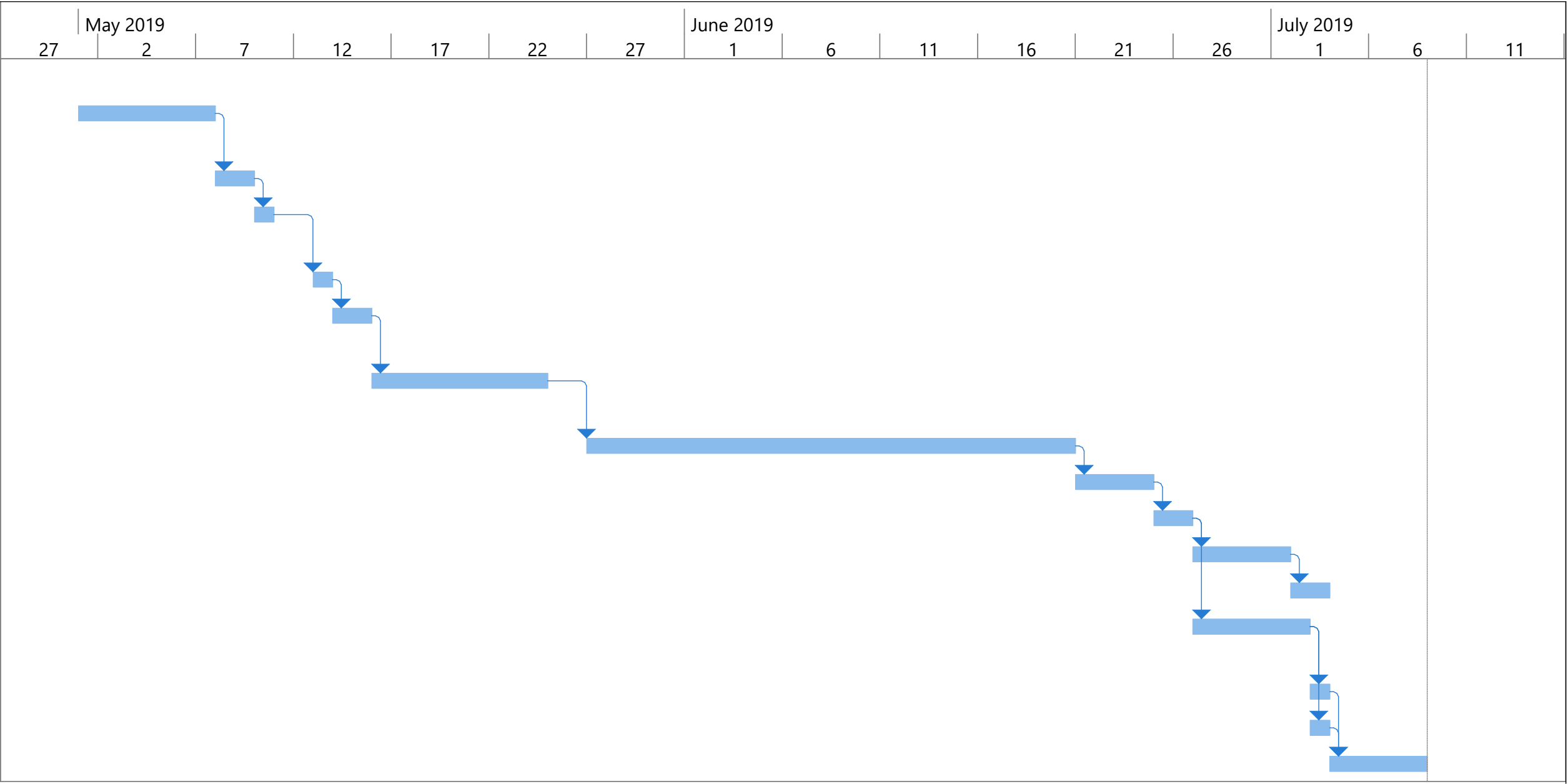
Key Words: Confined Masonry, Collaboration, Passive Ventilation, Schematics

ID	Task Name	Duration	Start	Finish	Predecessors	Successors
1						
2	Excavate Pad and Footings	5 days	Wed 5/1/19	Tue 5/7/19		3
3	Place Rebar	2 days	Wed 5/8/19	Thu 5/9/19	2	2
4	Pour Footings and Concrete Slab	1 day	Fri 5/10/19	Fri 5/10/19	3	3
5	Slab Cure	1 day	Mon 5/13/19	Mon 5/13/19	4	4
6	Tie in Rebar for Walls	2 days	Tue 5/14/19	Wed 5/15/19	5	5
7	Place Confined Masonry Columns	7 days	Thu 5/16/19	Fri 5/24/19	6	6
8	Place Masonry	19 days	Mon 5/27/19	Thu 6/20/19	7	7
9	Place Beams	2 days	Fri 6/21/19	Mon 6/24/19	8	8
10	Place Ceiling Thatch	2 days	Tue 6/25/19	Wed 6/26/19	9	9
11	Place Trusses	3 days	Thu 6/27/19	Mon 7/1/19	10	10
12	Place Asbestos	2 days	Tue 7/2/19	Wed 7/3/19	11	11
13	Place Metal Sheathing on Roof	4 days	Thu 6/27/19	Tue 7/2/19	10	10
14	Install Windows	1 day	Wed 7/3/19	Wed 7/3/19	13	13
15	Install Doors	1 day	Wed 7/3/19	Wed 7/3/19	13	13
16	Paint	3 days	Thu 7/4/19	Mon 7/8/19	14,15	14,15

\$33,000 Budget  
Budget Breakdown



2.5 Month Duration



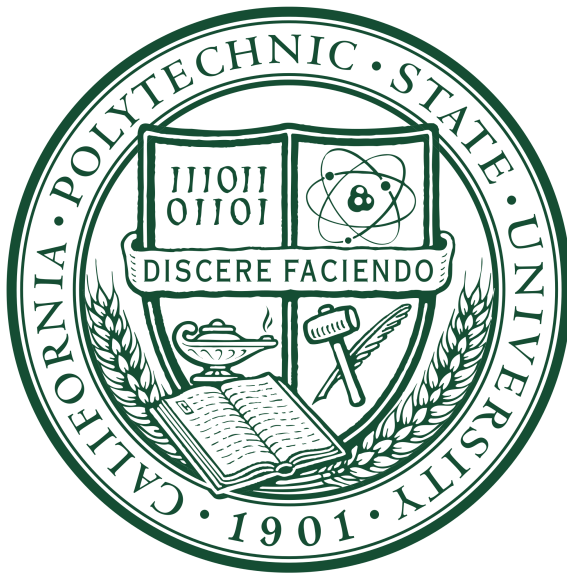
Daniel Weins  
CEO of JI

Carly Althoff  
Project Head

Leor Rozen  
CM

Leah Zaldumbide  
Designer

Serina Zepeda  
ARCE



Leor Rozen  
California Polytechnic State University - San Luis Obispo  
lrozen@calpoly.edu