

Feasibility of on Construction Improvements Underneath Cedar Creek Railroad Crossing

Industry Insights

1. Is this a legal walkway for the public?

It is not a legal pedestrian crossing.

2. Who owns the land?

Union Pacific Railroad owns the land, therefore access is trespassing, and may be cited by railroad police. UPRR owns the land 50' in both directions from centerline of the tracks.

3. Has the city thought about doing construction in this zone? Why/why not?

- High water in this culvert, as it is designed, would be problematic from pedestrians in a storm event

-ADA compliance

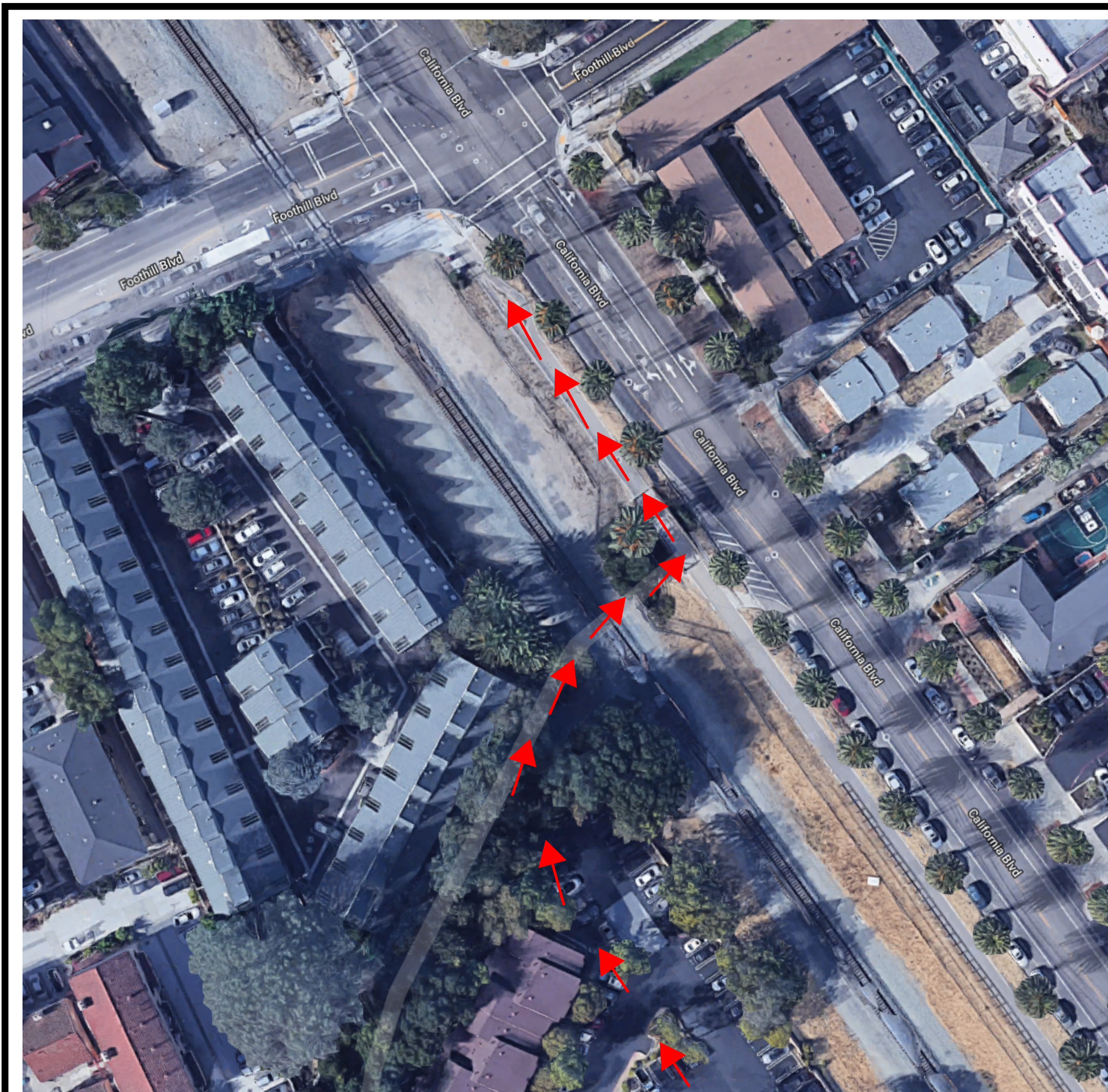
-UPRR prohibits access on their property to keep people away from moving trains.

This paper describes the impediments of initiating construction of a local tunnel underneath the railroad tracks approximately 50 yards South-West of the Foothill Blvd and California Blvd intersection. This tunnel is used by hundreds of students a day and acts as the primary route for these students to get to and from the Cal Poly campus. This tunnel has no lighting, is constantly flooded with water, and has multiple safety hazards. The author discusses the feasibility of starting construction to make this pathway a safe accessible route for all students. Throughout the paper, the author introduces the multiple parties with ownership and/or rights over the pathway and the feasibility of getting these parties to cooperate to acquire permits and eventually improve the tunnel construction. This paper is broken up into three components, the legal issues, the physical development issues and the perception issues.

Route #1: 0.7 miles



Route #2: 0.2 miles



Feasibility

