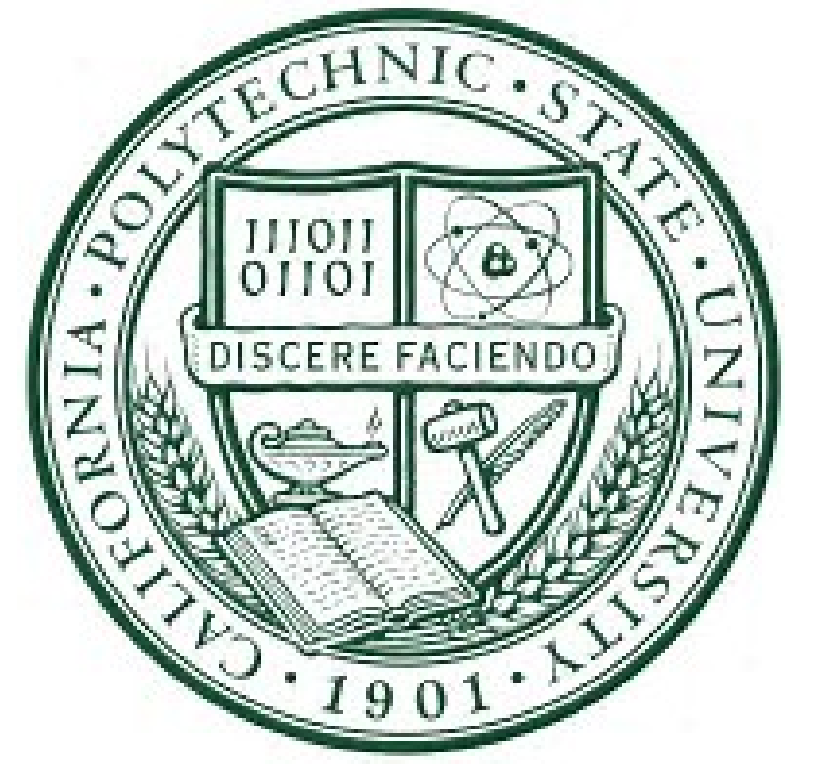




Journeyman International Construction Services Brazil Elementary School



Cabo de Santo Agostinho, Brazil

Kotaro Kihira
California Polytechnic State University
San Luis Obispo, CA

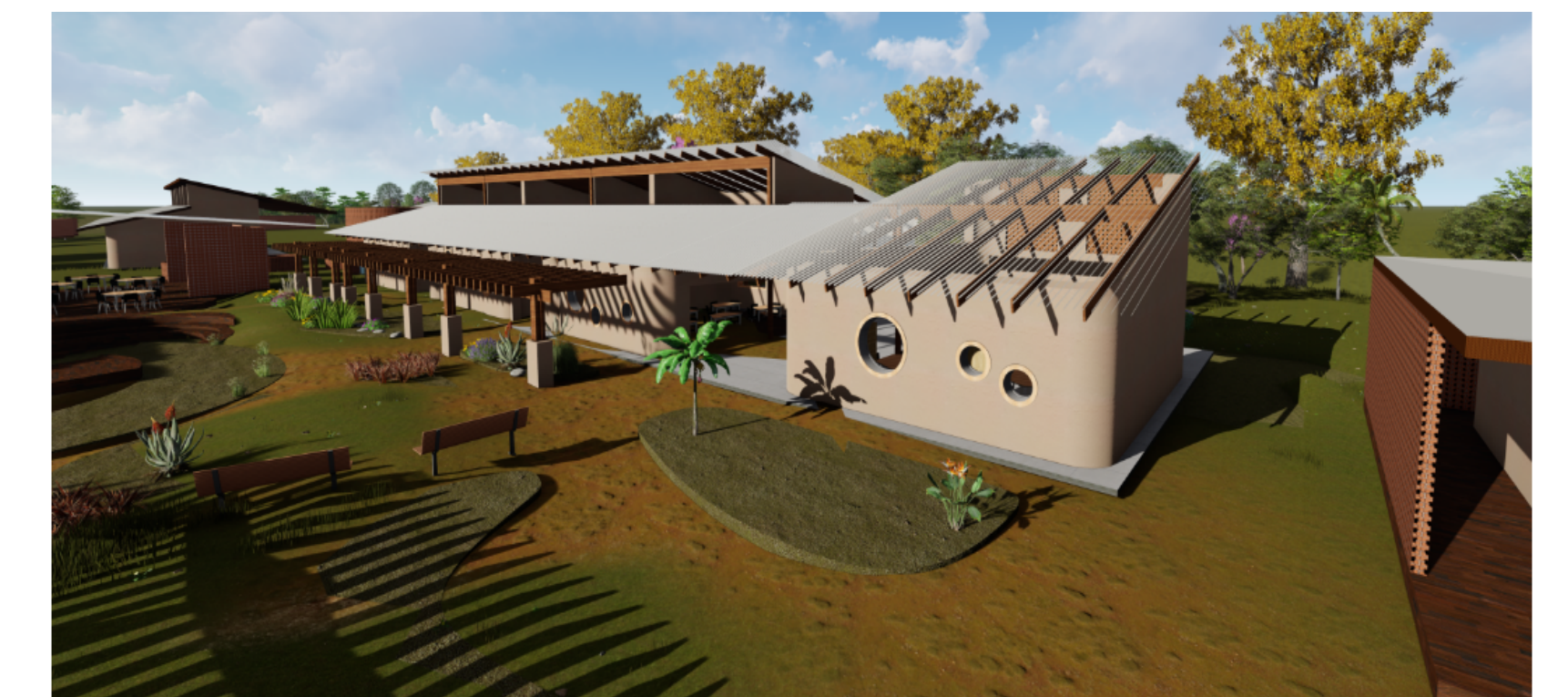
Nossa Escola de Terra



Abstract

This project-based senior project is a partnership with Journeyman International (JI), an interdisciplinary, non-profit organization that is based in downtown San Luis Obispo. JI matches students and volunteers with humanitarian projects all over the world. For the purpose of this project, students from the College of Architecture and Environmental design were paired in order to compile both design and construction service documents for an elementary school in Brazil. The Elementary School, which will be called Nossa Escola de Terra, will be built in Cabo de Santo Agostinho, a small town located in the state of Pernambuco, Brazil. This paper highlights the preconstruction package, which highlights deliverables required by JI students and were included in the Nossa Escola de Terra submission. These deliverables include the following: conceptual and final estimate, preliminary and final construction schedule, site utility plan, site logistics plan, hazard and risk mitigation plan and safety plan.

Keywords: Journeyman International, Cabo de Santo Agostinho, Nossa Escola de Terra, deliverables, interdisciplinary



Design Details

Conceptual Estimate: 900K
Conceptual Schedule: 3.5 years
(42 months)
Site: 1.9 Hectares/ 4.695 Acres

