



Lead Based Paint

Asbestos Abatement

Unforeseen Conditions

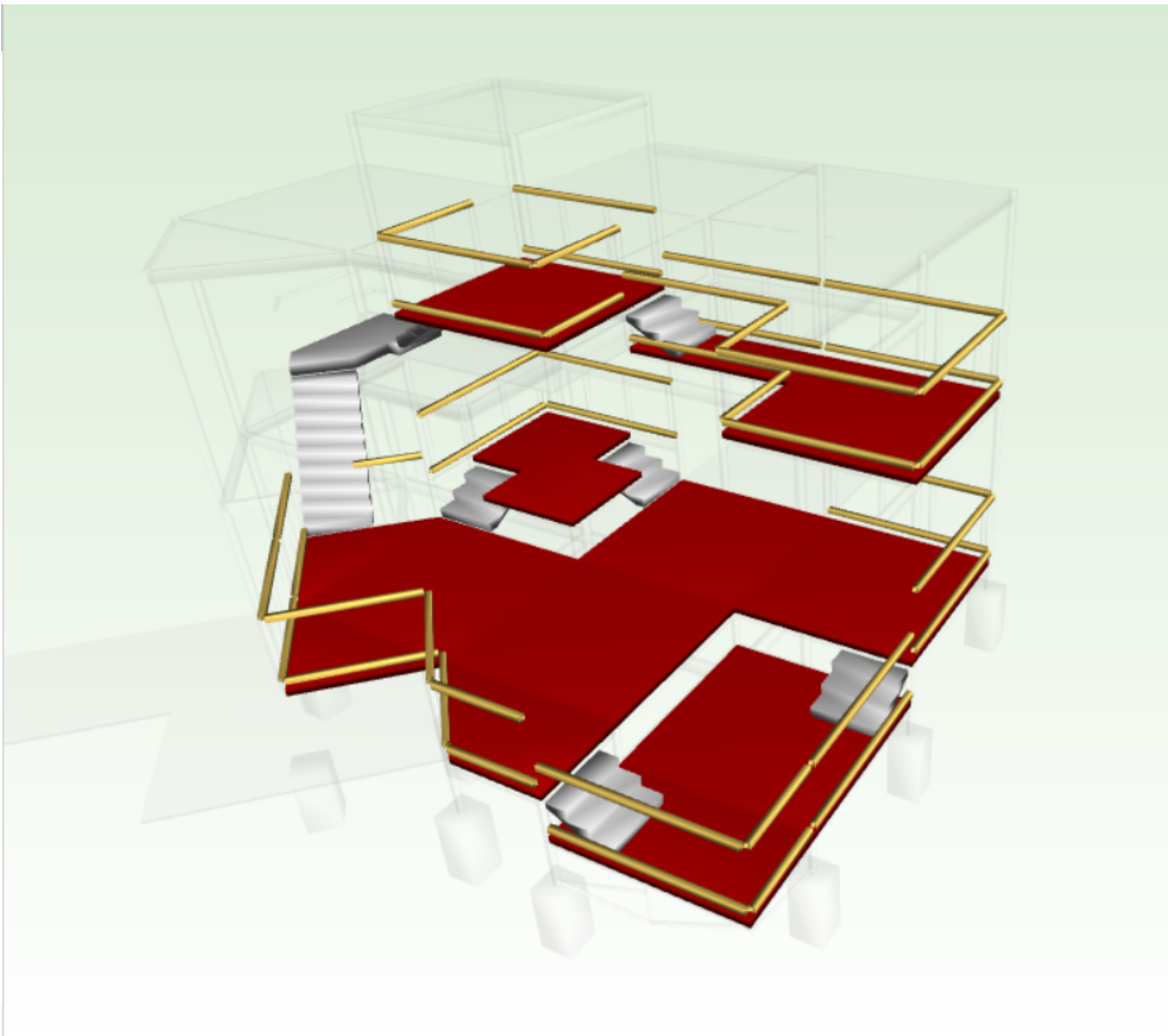
Hantavirus Disinfection

Compromised Beams



Preconstruction Services for the Modular House

The "Modular House", originally named for its composition of 8' x 8' x 8' steel framed modules, has experienced a rich history of tenants, additions and tourism. However, in the last decade, this building has seen increased vandalism and weathering backed by minimal maintenance, which ultimately led to unsafe conditions for the general public. Our mission was to allow this structure to be enjoyed by the public while highlighting its initial architectural features. Our remodel included a removal of all non-structural components and the addition of a new flooring structure and guardrail system that incorporated the iconic road-sign-siding. This report will walk through the timeline of design and construction, project costs, and the logistics of working on a remote site location.



Existing Structure



Proposed Structure

