

A Case Study in the Improvement of Construction Efficiency via the Analysis of Contemporary Sustainable Practices

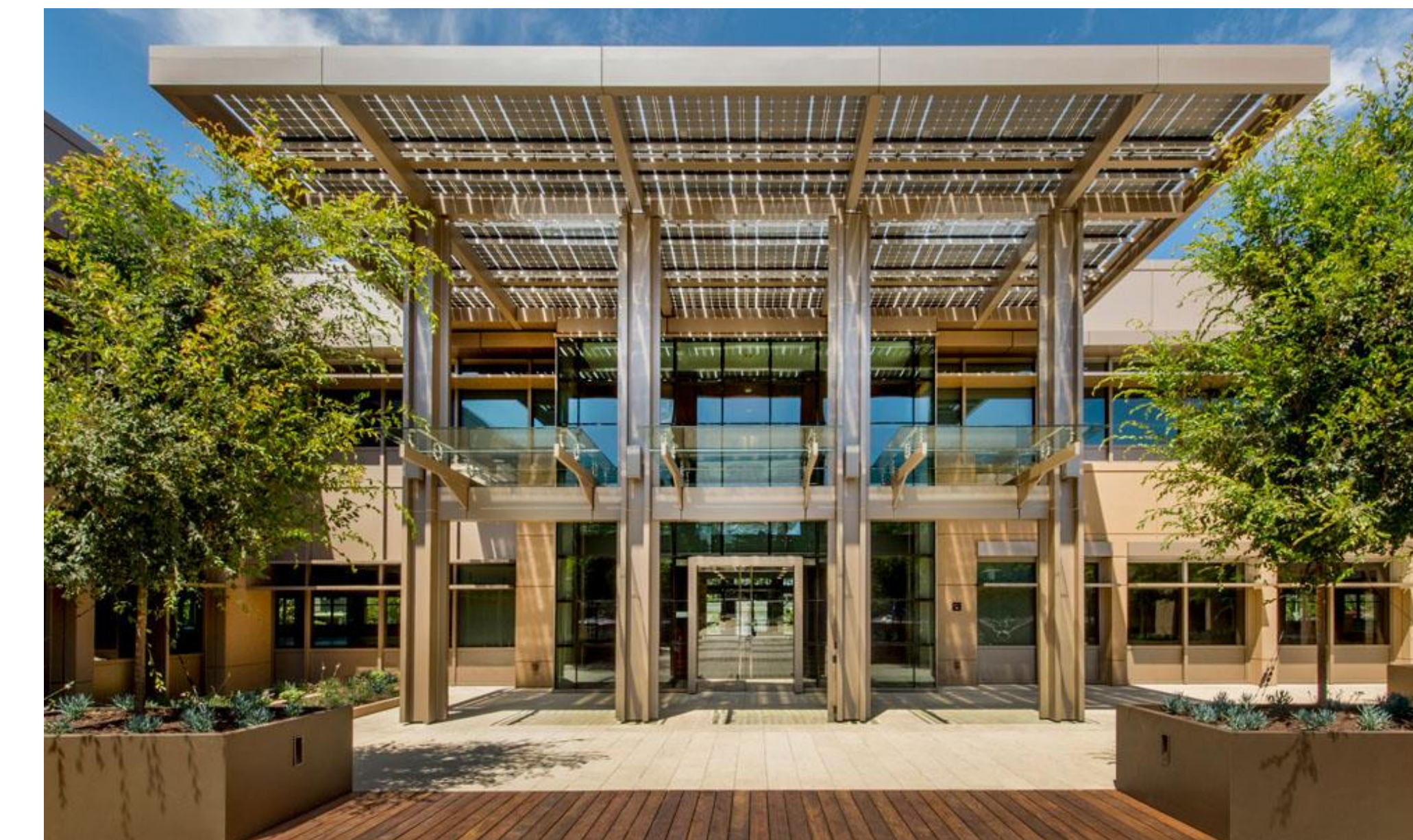


Project Members

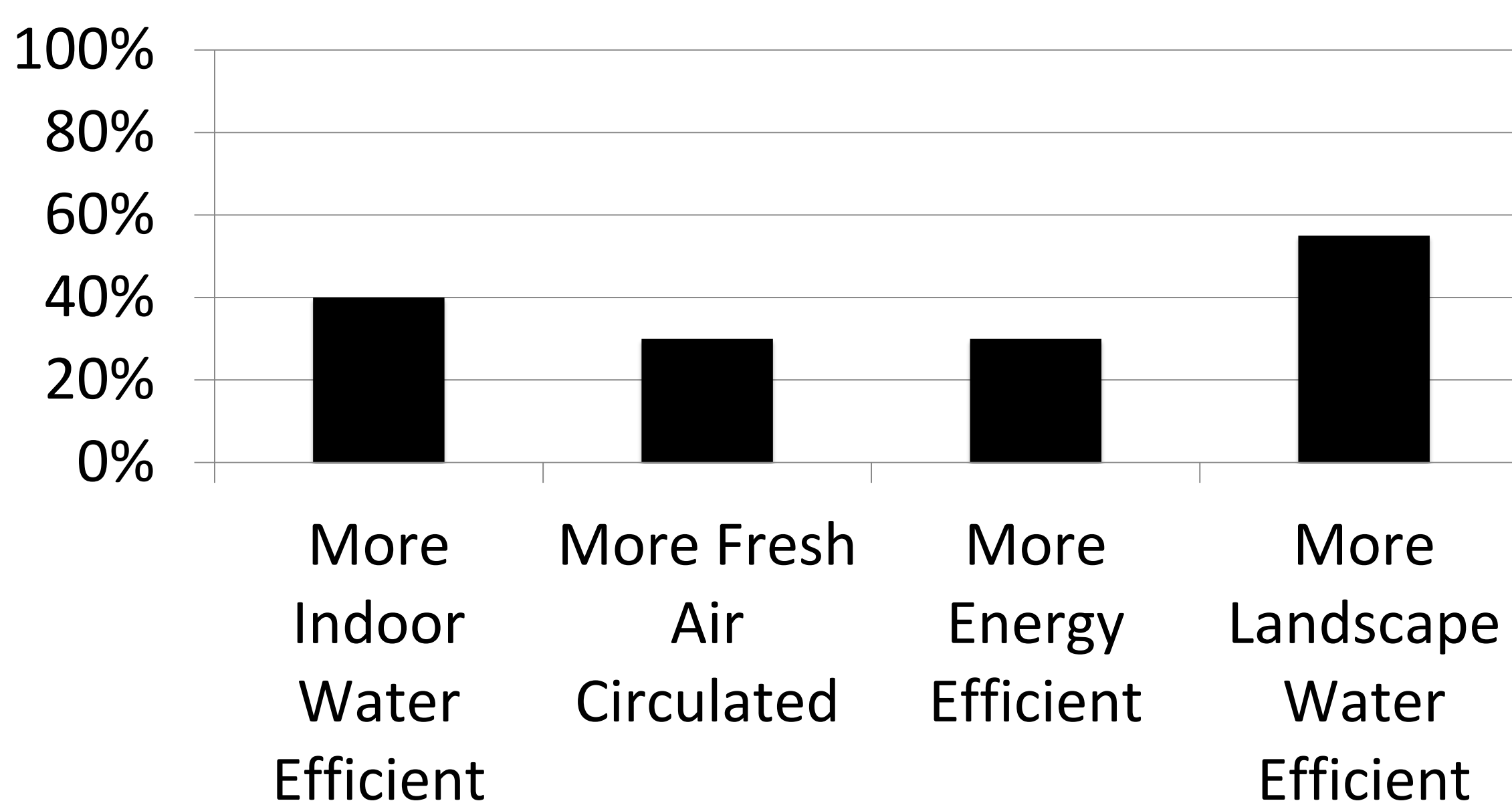


ABSTRACT

Often in practice the simplest solution to a problem is conscious collaboration regarding the environmental concerns relevant to the job site and the business plan. There are many techniques that can allow for the optimization of building inputs toward this end with environmental benefits in mind. The focus of this report is to evaluate the effectiveness of current sustainable practices in conventional construction methods via analysis of an individual LEED certified case study, the Page Mill Road offices construction project, on an environmental impact basis. By using state of the art cultural practices, knowledgeable consulting, and cutting edge engineering, the project team could maximize utility while minimizing the environmental impact and build out costs. The greatest side effect of these considerations are increased occupant health and comfort.



Page Mill Road Project Resource Efficiency Stats



Pablo Anzoategui
California Polytechnic State University
panzoate@calpoly.edu