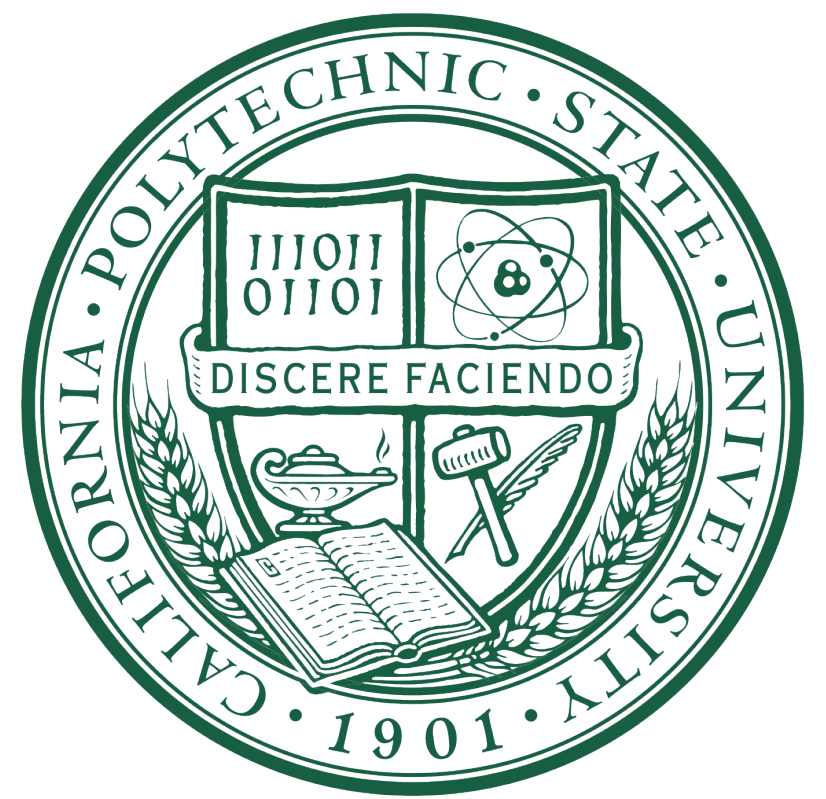




# Journeyman International: Hut2Hut, Rwanda



## Project Team



*Faith Johnson, CM*



*Erin Dupree, ARCE*



*Vana Kevorkian, Architect*

## About JI

Journeyman International (JI) is a platform connecting volunteer Architects, Designers, Engineers and Project Managers with humanitarian project needs around the world.

## Humanitarian Partner

Afritech Energy ("AE") is a development and service provider for electric power generation, construction, operations and maintenance, supply and installation. AE is a licensed supplier and general contractor specializing in renewable energy technologies, prioritizing Solar and Hydropower solutions.

## Design Details

**Size:** 1,300 SF [interior space]

**Budget:** \$25,000

**Timeline:** 9 months

**Capacity:** 8 people

**Materials:** Brick, Concrete, Wood, Steel, Sheet Metal, Elephant Grass

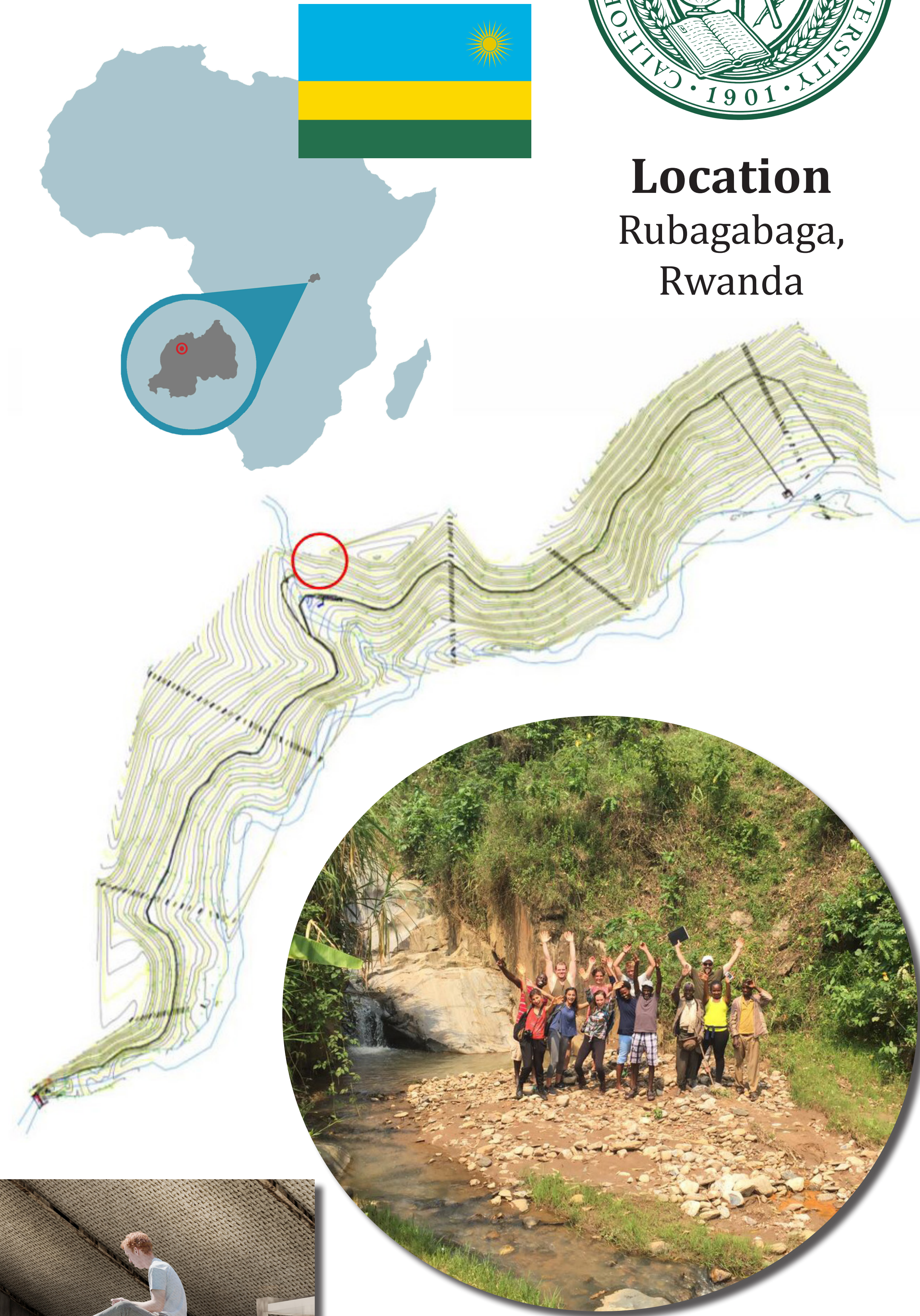
## Faith Johnson

California Polytechnic State University  
San Luis Obispo

## Abstract

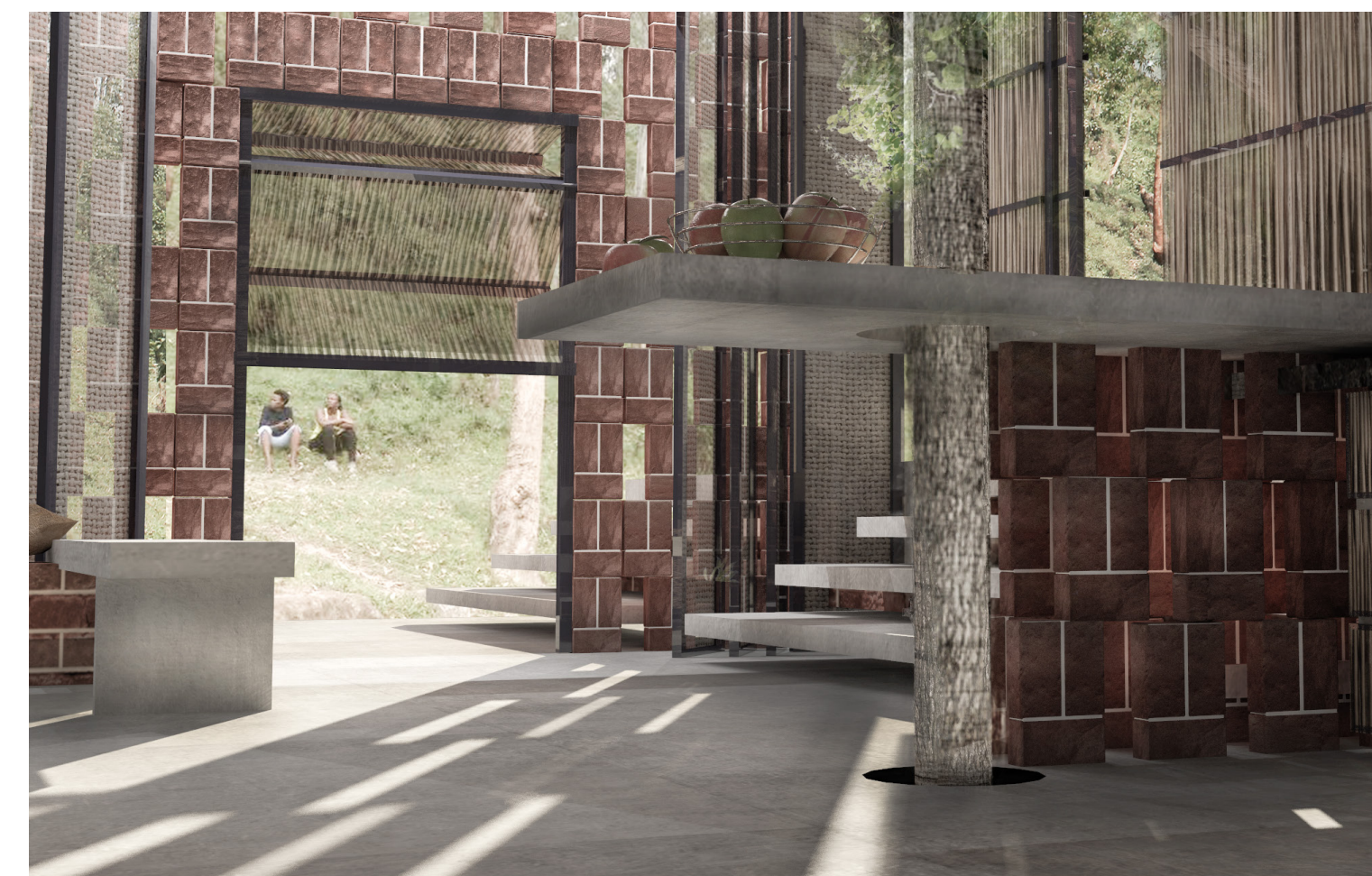
The purpose of this project is to design and build a housing structure for backpackers traveling through the village of Rubagabaga in Rwanda. The structure is designed to house 8 people. Features include an enclosed bunk space, kitchen with basic appliances, wood-burning fireplace, collapsible wall-deck system to open up the living space to the outside, and two main outdoor deck spaces. The building will provide an affordable alternative to the more expensive resorts in Rwanda and aims to connect the visitors to the site and local culture. The proceeds will be used to fund future Journeyman International projects in the area. The project is being designed for Dan Klinck, owner of Afritech Energy in Rwanda. The project was a collaborative effort with architecture student, Vana Kevorkian, and architectural engineering student, Erin Dupree. The responsibilities as the construction manager on the team include creating quantity take-offs, the project schedule, estimate, feasibility analysis, hazard and risk analysis, site utilities analysis, SWPPP, and site safety and phasing plan.

**Key Words:** Rwanda, Huts, Backpacking, Humanitarian Design, International Construction



## Location

Rubagabaga,  
Rwanda



Faith Johnson  
JI Humanitarian Designer  
faith@journeymaninternational.org  
858.602.8171