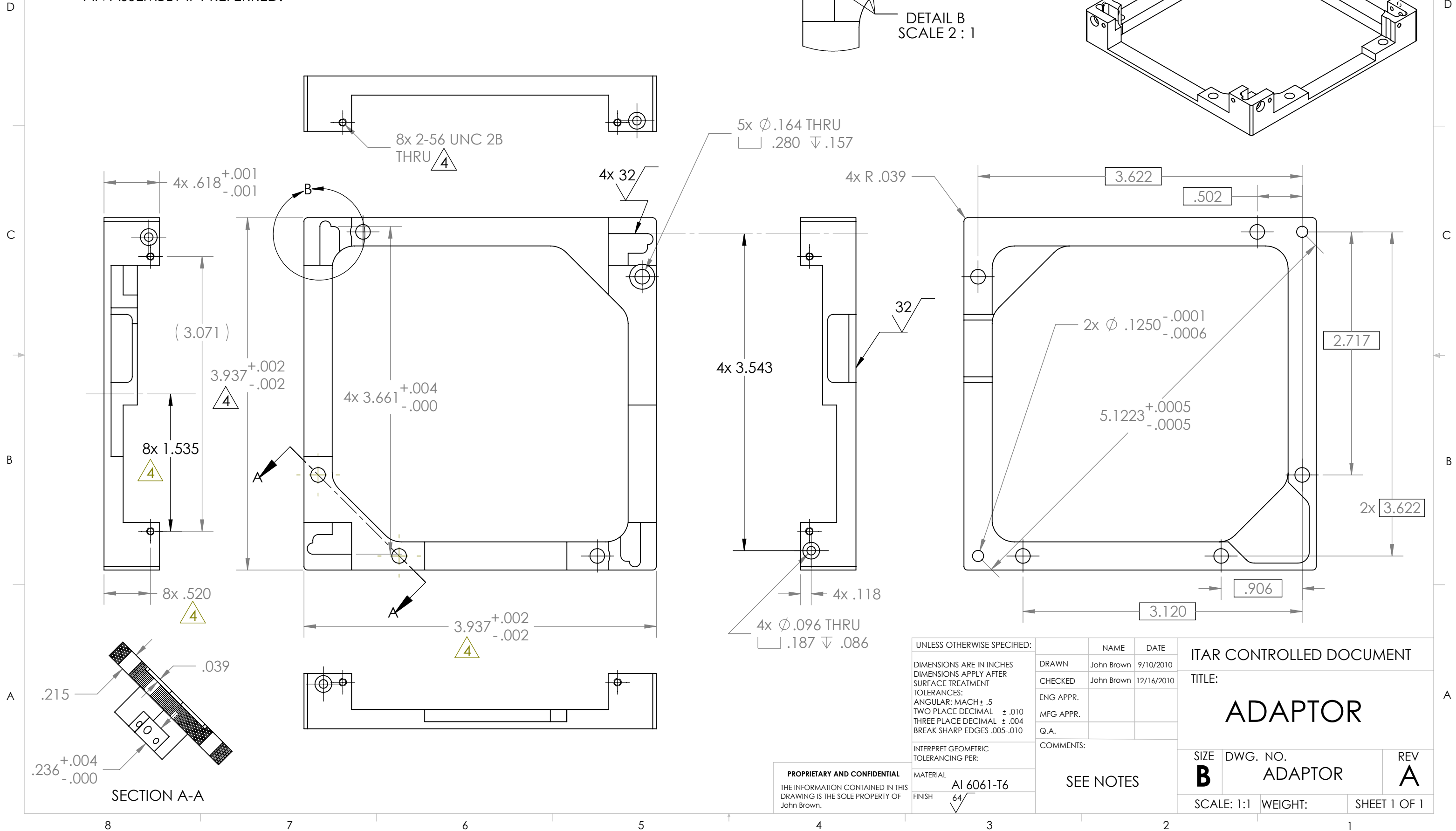
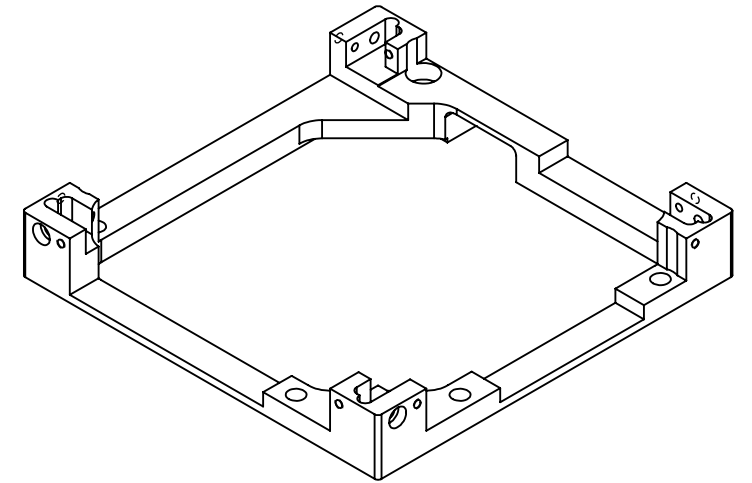
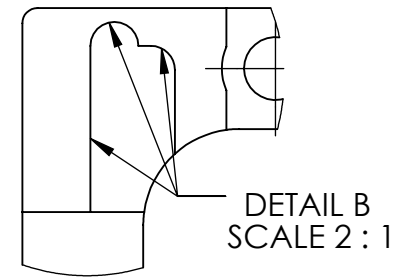


NOTE:

1. ALL UNTOLERANCED FEATURES ARE $\sqrt{.010}$ FROM THE MODEL.
2. TYPE III HARD ANODIZED, BLACK, .002 TOTAL, (.001 BUILDUP FROM SURFACE).
3. CHEM FILM IN .125 THRU HOLES AND THREADS.
4. OD FINISH SIZE, 8x 2-56 THREADS, AND DETAIL B, CAN BE MACHINED LATER AS AN ASSEMBLY IF PREFERRED.



UNLESS OTHERWISE SPECIFIED:

DIMENSIONS ARE IN INCHES
DIMENSIONS APPLY AFTER
SURFACE TREATMENT
TOLERANCES:
ANGULAR: MACH $\pm .5$
TWO PLACE DECIMAL $\pm .010$
THREE PLACE DECIMAL $\pm .004$
BREAK SHARP EDGES .005-.010

INTERPRET GEOMETRIC
TOLERANCING PER:

MATERIAL
Al 6061-T6

FINISH
64

	NAME	DATE
DRAWN	John Brown	9/10/2010
CHECKED	John Brown	12/16/2010
ENG APPR.		
MFG APPR.		
Q.A.		

COMMENTS:

SEE NOTES

ITAR CONTROLLED DOCUMENT

TITLE:

ADAPTOR

SIZE DWG. NO. REV

B ADAPTOR A

SCALE: 1:1 WEIGHT: SHEET 1 OF 1

PROPRIETARY AND CONFIDENTIAL
THE INFORMATION CONTAINED IN THIS
DRAWING IS THE SOLE PROPERTY OF
John Brown.