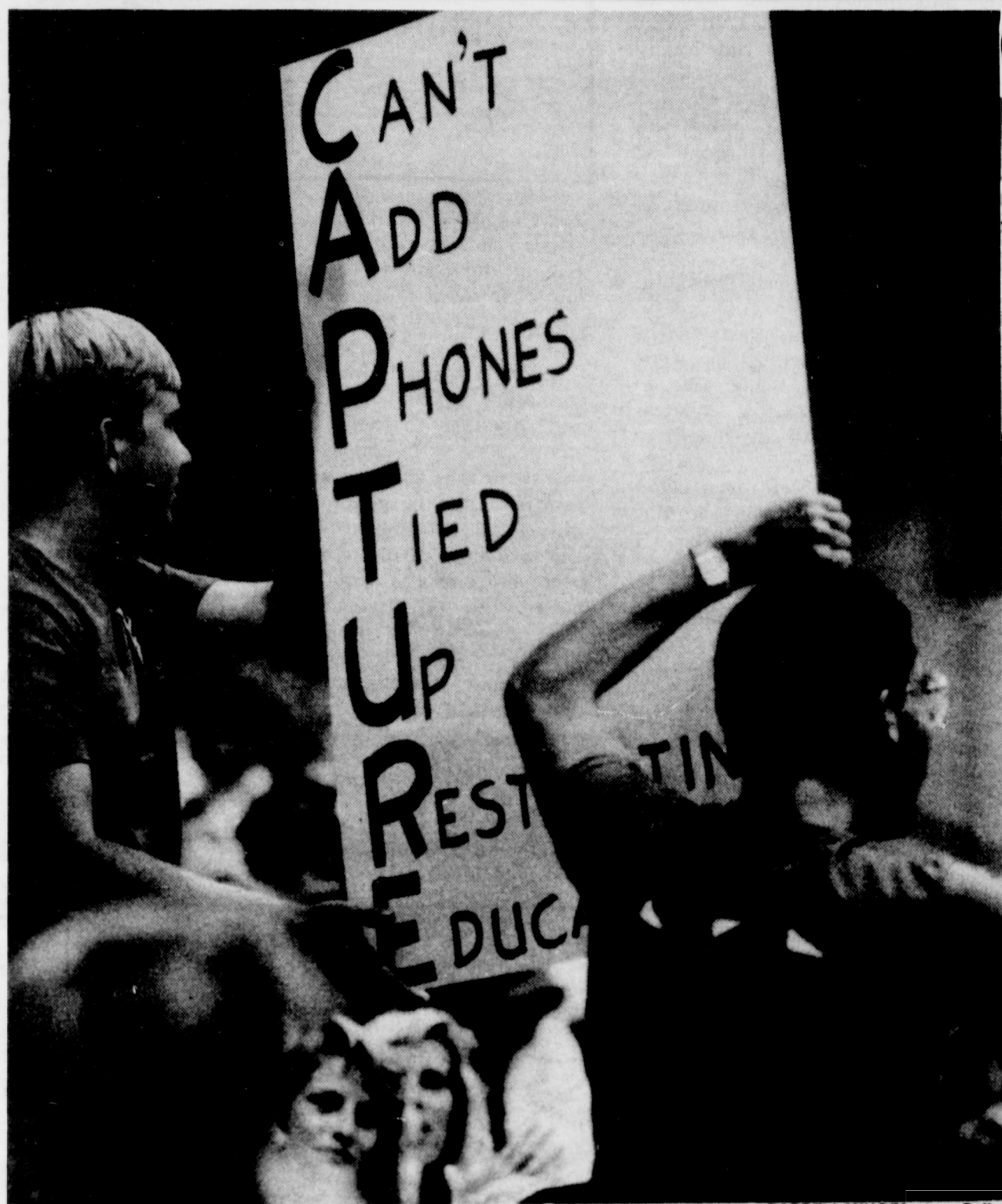


# MUSTANG DAILY

California Polytechnic State University San Luis Obispo

Volume 53, No.2

Thursday September 22, 1988



DARRELL MIHO/Mustang Daily

Students display their own CAPTURE acronym at game

## CAR problems clog new add/drop system

By Karen Williams  
Staff Writer

There are a lot of frustrated students on campus this fall. Although Cal Poly's new voice response registration system, CAPTURE, appears to be in good working order, it has been difficult for students to gain access.

Registrar Gerald Punches said, "The system is working fine, but we have the residual CAR problems." Punches said his office has been hearing complaints by students because they cannot access CAPTURE and when they do reach the system they often find most classes are full.

Punches said he would like to encourage students to drop classes they no longer want as soon as possible because the dropped class will immediately become available to another student who needs to add it.

Students have been lining up to use campus phones at the library, student union and anywhere else they can find an on-campus phone. Word spread quickly that it was easier to reach CAPTURE from a campus phone. Students who are frustrated with CAPTURE and tired of hearing the now-familiar busy signal opted to wait in long telephone lines in case the rumor was true.

Students calling CAPTURE Monday Sept. 12 temporarily tied up San Luis Obispo phone lines. According to Vivien Lauster, media relations manager for Pacific Bell's Central Coast region, the number of phone calls made to San Luis Obispo that day were quadruple the average amount.

To prevent calls to CAPTURE from

gridlocking the phone system, American Telephone and Telegraph Co. and Pacific Bell exercised their option to block excessive phone calls to CAPTURE.

The phone companies were able to do this because of an agreement reached with Cal Poly administrators. Lauster said it was necessary to block some calls to keep the phone system operational and "keep it open so true emergency phone calls could get through." Emergency calls to the 911 number went through normally because of this blocking.

"Because (CAPTURE) has never been done before ... we were prepared for a

See CAPTURE, page 13

## Student sings Capture blues

By John S. Baker III  
Asst. editor

Although some students frustrated by Cal Poly's new phone registration system, CAPTURE, grumbled, groaned and cursed as they repeatedly received a busy signal or discovered desired classes full, one of their enterprising peers transformed frustration into creative energy.

He wrote and recorded a song expressing his discontentment with the system.

Kevin Dickey said he awoke Monday at 6 a.m. and began calling CAPTURE around 6:30 through the phone modem on his computer. The lines were already busy, he said. He said he dialed continuously for three hours and still had no luck.

His roommate, who bore witness to Dickey's troubles, began to rap, a la Run

See SONG, page 7

## Profs get grading option

By Bruce Sutherland  
Staff Writer

Although many students are disgruntled with CAPTURE phone registration, the OASIS computer system, which allows CAPTURE, also allows faculty the option of grading on a plus/minus scale.

Originally approved by President Warren Baker in 1982, the new extensive grading method had to wait until Cal Poly received a computer program capable of implementing it.

Now, with OASIS on-line, faculty have the alternative to stick with the old or opt for the new.

"I haven't really decided whether or not to use it," said agricultural education professor Brad Dodson. "If I do, it will be in a positive sense."

Dodson believes the pluses should be emphasized to reward students rather than discourage them with minuses.

"When I was a high school teacher, I gave out A-pluses to those who deserved them," Dodson said, noting a flaw in Cal Poly's plan because it does not allow A-plus grades.

The highest grade possible is still an A, followed by an A-minus and on down to a D-minus. Classes taken on a credit/no-credit basis will get credit with a grade of C-minus and higher.

Computer science professor Leonard D. Myers does not see the A-plus as being essential to the grading plan.

"The A-minus and B-plus are the two more important grades because sometimes a student falls into a category that is not a strong grade," Myers said.

"As an instructor I would like to denote that on the grade."

Charles M. Slem, psychology and human

development professor, expects little more than two percent of his students to be affected if he imposes the scale. As a result he is going to survey his classes for their grading preference.

"I have pretty much worked into my system the people who are borderlines," Slem said.

But Slem said it would not be difficult to change. "I will only need to create new cut-offs for the A-minuses and such."

Students around campus interviewed seemed to hold a somewhat skeptical view of the policy, but were willing to greet it with an open mind.

"It's good for the border types," said junior business-major Amy Hill. "But it doesn't reward the excellent students with an A-plus. I would like to get one if I earned it."

Jordy Steinberg, a sophomore architecture major, believes the new policy will give students more leeway in pleading for grade points. "Now a person will be going to a professor asking for a B-minus rather than a C-plus. I think it'll create more problems for the instructor."

Freshman Martha Kline, a home economics major, has not given the system a lot of thought. "Not a lot of information has been given out about it. I don't think it is exactly a bad idea."

"I had the system at UC Davis," said biology senior Laura Penzo.

"It didn't do me a lot of favors. It fine tunes the scale but not always in the best interest of the student."

History senior Curtis Dison agreed that it makes the grades more applicable to the individual. "Now students that were just skating by will have to think about the fact that they could get these pluses and minuses."

## Latin writer offers hope

By Anna Cekola  
and Matt Potolsky  
Special to the Daily

As Latin America moves toward the 20th century, progress can only be made by respecting a deeply-rooted and diverse cultural tradition, said influential Mexican writer Carlos Fuentes.

The need for political self-determination and economic inter-dependence in Latin America was also stressed by Fuentes to a standing-room-only crowd Monday at the Cal Poly Theatre. The lecture, titled "Latin America: Culture and Crisis," was the keynote address of the 1988-89 Arts and Humanities Lecture Series, which focuses on Latin America.

Asserting that Latin America is only visible to North American perceptions through political and environmental disasters, Fuentes reminded the audience that this region's history "does not begin with headlines."

"Negative crisis takes away from the positive cultural aspects of Latin America," he said. Fuentes underscored the diverse cultural heritage of the area, referring to it as "Indo-Afro-Iberio America." The term Latin America, he jokingly said, "was an invention of the French to include themselves."

But this joke has serious connotations in relation to the emergence of continuous and independent Latin American identity, which Fuentes said is essential to stability and progress in the region.

To illustrate the necessity of this formula, Fuentes spoke of an influx of Western media images ranging from



DARRELL MIHO/Mustang Daily

Carlos Fuentes

Toyotas to soft porn that serve as disturbing temptations to the predominately young, semi-illiterate and impoverished population of Latin America.

"We are quickly moving from 100 years of solitude to 100 years of promiscuity," Fuentes said, evoking the famous work of another Latin American author, Gabriel Garcia-Marquez.

Similarly, the characteristically weak or heavy-handed Latin American civil societies can only be strengthened by a recognition of cultural continuity "so laws and reality coincide," he said. To establish such an equilibrium, Fuentes said Latin America must set its "houses in order" and control such internal and external difficulties as its enormous foreign debt.

See FUENTES, page 16



## MUSTANG DAILY

The newspaper for Cal Poly.

Since 1916

April Karys, editor  
Anna Cekola, managing editor  
Alison Skrat, managing editor  
Coleen Bondy, opinion editor  
Terry Lightfoot, sports editor  
Donna Taylor, spotlight editor  
Nicole Jones, insight editor  
Shelly Evans, lifestyle editor  
John S. Baker III, commentary editor  
K.M. Cannon, photo editor  
Amber Wisdom, asst. photo editor  
Peggy Yeyna, business manager  
Jacqueline Tasch, faculty adviser

### Letters to the Editor

## Harassment not unusual

Editor — Three cheers for Meda Freeman for having the courage to write the article (*Summer Mustang*, Aug. 25) on harassment of female students by male professors. From my own experience, and from the experience of friends on campus, I have come to the conclusion that this type of harassment is not at all unusual at Poly. If even one faculty member changes his behavior because of your article, Meda, it will have been worth taking the risk. Thanks for speaking up for more than a few women.

Joan Parce  
Graduate Student, education

## WOW story too critical

Editor — What a narrow and negative welcome to Cal Poly and WOW Jeff Kelly's article was.

How can someone with several years' experience in this remarkable and positive atmosphere be so negative. We are fortunate to be at an institution that has the quality faculty it does. Jeff says we have our share of faculty and staff that should be sent back to industry — well, I would be surprised to learn that even one of our faculty couldn't do better financially in industry — and I for one am very glad these dedicated people are here.

Sure, I couldn't get any sections in twenty courses I wanted to take this quarter. But I was able to put together an acceptable schedule in a day on CAPTURE. Sure, I would like to have days and times a bit more convenient, but I am here for an education — not to complain about getting up early for an inconvenient class. Jeff, you need to clean up your act. You will be up at 7 every morning in the real world.

My return to Cal Poly after a

few years' absence has been pleasant. A terrific counselor in my major field, extremely helpful clerks in admissions, and complete and concise course schedules are what I've found. In Jeff's parlance, I've encountered people who gave a damn and seemed very competent.

We found a new system for registration — a complete and accurate one. While there are access problems from off campus, and we need more on-campus telephones, putting the system on line went very well.

About the environment, I feel the same fear for this area as Jeff does. Development seems to threaten the style and pace of life that makes San Luis Obispo so unique — but to brand the community leaders and developers as the devil is ignorant.

San Luis Obispo County has retained a specialness over the last three decades, though the development strikes one as moving much too quickly. But rather than give up hope and turn my back on it in disgust, let me ask a question of all of us — aren't we the future? Are we not the brightest and ablest minds? Aren't we the chosen ones who will lead the communities of California in the next century?

Many of the business people in the community I have met are not cigar-smoking ogres. Many are Poly grads. Most are raising families, and have more at stake than our rebel without a cause columnist.

So how about getting involved — isn't that an important goal that is part of our education? How about some senior projects in innovative urban planning that address the growth that pressures us?

We are part of this community, and the problems here are ours. We may not have had much to do with how SLO got here — but it is partly up to us where it is in a decade.

Kent Duncan  
Business Administration

### Letters Policy

Letters to the editor should be typed, no longer than 300 words, and include the author's name, address, and major/title. Letters may be edited for brevity, grammar, or style.

# The rapture of CAPTURE

It's Sunday, September 18, 1988, you have spent the whole day trying to add classes on the new phone system. In the wee hours of the morning your dreams of meeting that serious babe in a chemistry lab are interrupted by a telephone number ... 756-7777. Subconsciously you wait to hear a voice. You leap from the bed in a cold sweat when those all too familiar busy signals ring loudly in your ears.

Welcome to CAPTURE!!! The newest torture system devised by man. A system that allows you and 15,000 other students to register through 32 phone lines. Well let's see that's roughly one line per 500 students. That's not bad if you compare it to the lack of classes that the lack of phone lines allows you not to get.

Welcome to CAPTURE!!! Now Cal Poly students you really get to learn by doing. You get to learn that there are some very serious flaws in the systems while you spend hours punching the same buttons getting the same response. Being able to register over the phone is an attractive concept. Sitting at home unable to accomplish anything is a nightmare.

Welcome to CAPTURE!!! The system even has a sense of humour. You've just tried for the one hundredth time. There's a ring!! Then another!!!! On the verge of elation a female voice interrupts your ecstasy and says "Sorry all circuits are busy, please try your call again later." At this point the phone, that instrument for reaching out and touching someone, finds itself airborne and headed directly for the wall across the room.

Welcome to CAPTURE!!! Totally frustrated with this exercise in futility you decide to get your classes the old fashion way ... beg! Sad, sorrowful looks can solicit help from the registrar's office. Clerks diligently look up the classes and let you know that there is space. Almost like a gift from heaven they hand you a purple ticket to Basket

Terry Lightfoot

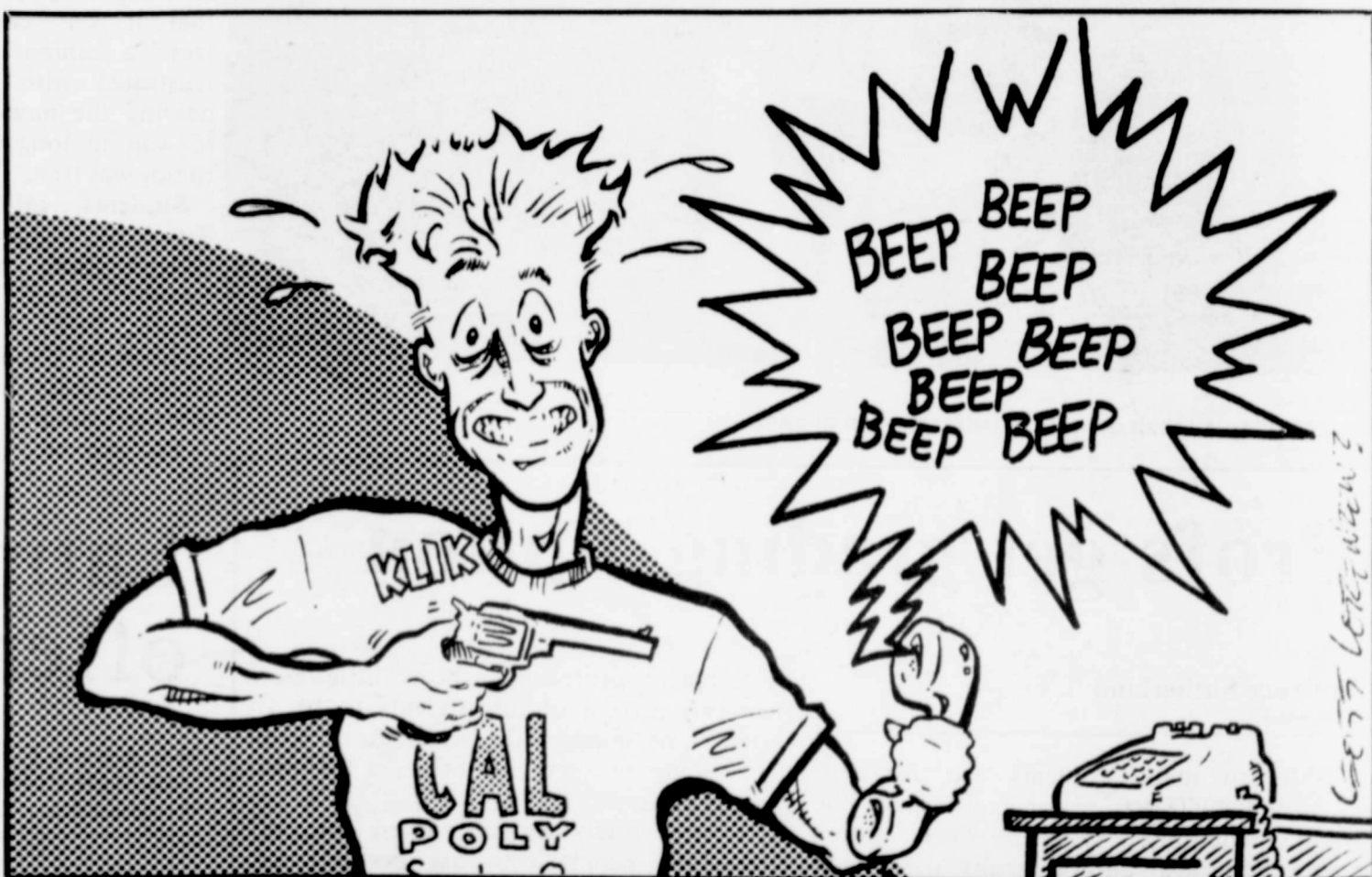


Weaving 101. However the gatekeeper at BW 101 refuses to add you to the roll. So once again you are on the road to hell riding in the Administration's chariot of good intentions.

CAPTURE is not a bad system. Just a badly implemented one. Someone out there in that desert OASIS (Online Administrative and Student Information System), should have foreseen the bugs and shortfalls in the system. Hindsight sight is of course 20/20. But on a scale measuring shared difficulty it's students 90 administrators 10. Professors should be glad. They no longer have to sift through the throngs of groveling students sobbing and whining reasons why they should get the class over someone else. All they have to do is sit back and say go talk to CAPTURE. I think the student body should stand up and say the hell with CAPTURE!

President Baker has said time and time again that the University wants to retain green space while completing new building projects. Seems strange that the administration wants to surround us with nature while they drive us indoors to dial for classes.

Terry Lightfoot is the Sports Editor for the Mustang Daily. In his spare time, he dials 7777.



### Help wanted...

## People with ideas desperately sought

The opinion page of the *Mustang Daily* should reflect ideas and opinions from all parts of the campus, not just the journalism department. Professors, staff and students are invited to submit columns expressing thoughts on any social, political, or other, matter.

Thoughtful, coherent pieces will be considered for publication. Humorous or satirical pieces are also welcome.

Articles should be submitted to room 226 of the Graphic Arts Building, care of Coleen Bondy, opinion page editor.

They should be no longer than five pages typed and double spaced. The newspaper is here for the entire campus, and should be accessible to everyone.

Columns that are in poor taste, or contain racial commentary, will not be published.

### BLOOM COUNTY

by Berke Breathed



Mustang Daily is published daily by the Cal Poly journalism department. Unsigned editorials reflect the majority view of the the Editorial Board. Advertising is solely for informational purposes and does not represent an endorsement by the publisher or the university. Mustang Daily office is located in Room 226 of the Graphic Arts Building, San Luis Obispo, CA 93407. (805) 756-1143.

Advertising Director: A. J. Schuermann Jr.  
Account Executives: John Alexiou, Mark Azevedo, Katy Bartlebaugh, Chuck Bartunek, Larry Bittleston, Kim Carlson, Marisa Fujikake, Lysa Francis, Bret Goodman, Kristi Honda, Ron Sarne, Mike Weiser  
Classified Advertising: Larry Bittleston: Manager, Kathy Conlan, Tracy Fowler, Dan Malone, Dani Quittner: Business Directory  
Circulation Staff: Darin Hershberger.  
Computer Operations: Dan Malone  
Production Manager: Sandy Kolbe  
University Graphic Systems: Kevin Elder, General Mgr; Bill Naritomi, Pre-Press Mgr; Tony Cerrato, Press Mgr; Tom Connelly, Asst. Mgr. Paste-Up; John Grubb, Asst. Mgr. Electronic Imaging; Mark Ford, Asst. Mgr. Web Publications.



# Suspected sign stealers get student cars towed

By Kelley Cummins  
Staff Writer

Police said that construction on Romona Street late last week caused more than 20 cars to be towed, yet students claim foul play was the reason instead.

No Parking signs, posted in front of Valencia Apartments down to Broad Street, were supposed to be up from the 12th to the 23rd of September, but vandals were tearing them down.

A resident from Valencia, Lewis Chamberlain, said, "In a few days, the signs were getting vandalized, and the city didn't replace them. By Thursday, I didn't see any more signs, and there had not been any construction that day. In my mind, I thought they weren't working in this area."

By Friday morning, the San Luis Police Department had distributed more than 20 citations to parked vehicles in the area and had called several towing companies.

"The manager at Valencia woke me up and told me that my car was going to be towed. I

moved my car, but still received a \$20 citation fee," Chamberlain said.

He said that the construction workers re-posted the signs in the morning, making the parked cars in violation.

Many students who had their cars towed said that they did not have a fair chance. One example is Edgar Guting who said, "I arrived late Thursday night and had no way of knowing I was in a tow away zone. There were no visual signs. I'm not at fault."

The towing companies charged students a minimum of \$45 all the way up to \$65. In addition, students were charged a \$20 citation fee by the San Luis Police Department.

"Financially, I was ripped off. I'm low on cash and used all of it on that," Guting said.

Student, Victor Ho has a similar problem. He moved in to the Valencia complex late Thursday night and had his car towed the next morning. He said, "I spent the next day trying to get my car back, and I had to spend a lot of money. It's unfair, because we're getting punished for what others did. I think it's also poor planning on the city's part."

ing on the city's part."

Chamberlain said he has contacted the San Luis Police Department, the City's Public Works Department, the Mayor and one councilmember, yet no one has been willing to help the students.

"Councilman Jerry Reiss told me that things like this have happened before, but he did not tell me the ultimate outcome," he said.

Another student involved in this incident was Tim Jones. Jones spoke to Wayne Peterson, an engineer for the Public Works Department, about the problem and was told to "leave your cars home (where your from) and if students make San Luis Obispo their permanent residence then they are the exception and not the norm."

Peterson was not available to comment on his response.

Chamberlain said he hopes to organize the students enough to go to court. "I would like to at least try to get out of the citations. To me, there's enough people saying there's something wrong here. I feel victimized," he said.

## Tutoring cut hurts team

By Terry Lightfoot  
Sports Editor

The Cal Poly Mustang football team and other athletic programs have long been constrained by a lack of funds and high admissions standards. The football team's job dealing with these factors has become even more difficult with the closing of the Tutoring Center.

Last year the ASI voted to close the center because of cost and because it felt that the state should pay for such programs, ASI President Tom Lebens said.

Lebens said that tutoring didn't fit the ASI mission of supporting extra-curricular programs. In the past ASI budgeted \$7,000 to the center, he said.

Danny More, special teams coach and administrator to Head Coach Lyle Setencich, has the task of getting football players

tutoring help when they need it. Because there is no tutoring center, More has had to raise money for private tutors. At the time of the interview More said he had raised about \$500.

More said he feels Cal Poly needs a fully staffed tutoring program. "Cal Poly is a difficult school for regular students, so you can see how hard it is for a student athlete who has to spend three to four hours a day practicing and competing."

A few years ago, students voted in favor of a fee increase to help the athletic programs become more competitive. More said the university must realize that money for the athletes and tutoring programs go hand in hand to have a winning program.

More said school administrators need to make fundraising for athletic programs a priority.

## Mini-mall nears finish

By Linda Fritsch  
Staff Writer

A neighborhood shopping center under construction on the corner of California Boulevard and Taft Street will open in late October.

The \$1.2-million center, California & Taft, will house a yogurt shop, one-hour photo, video store, doughnut shop and, tentatively, a sandwich shop and private post office.

"The center is designed to serve the needs of both the student population and local neighborhood," said John Rossetti, a partner in Goodfield Rossetti, which owns and is developing the property. "Right now, people in this area have to rely on the Foothill area. We expect a lot of walk-up and bike-up business and so we are going to have a lot of outside tables and benches."

The 6,250-square-foot property is 60 percent leased, said Rossetti.

Rossetti said he wants to see an attractive center.

"I live in this area myself and the last thing I want is a tacky little 7-11 type shopping center," said Rossetti.

## LIBRARY TOURS

SEPT. 22 & 23 (THUR & FRI)

10:00 am and 3:00 pm

Meet in the Library Lobby

**EVERYONE WELCOME!**

VALUABLE COUPON

Social or Western

DANCE CLASSES

543-7864

Partners not needed • Have Fun • Meet New Friends

SOCIAL DANCE SCHEDULE

Cal Poly: Mon. Beg. 6:30-7:30p. Int. 7:30-8:30p.  
Adv. 8:30-9:30p.  
New Classes start 8/1 9/26, 10/24  
No Class 7/4  
Meet in Ag Bldg. Rm. 220. Instr. Robin Day

SLO: Sun. Beg. 1:2p. Int. 2:3p. Adv. 3:4p.  
New Classes start 8/7 9/11, 10/3, 11/6  
Meet at Meadow Park (South St. & Broad)  
Instr. Mary O'Neill. Welcome to join 2nd night.  
Gvr. City & Atascadero call us.



Starts Soon

Welcome to join 2nd night!

\$1 OFF any 4-week class. 1 coupon per family

WESTERN DANCE SCHEDULE

Cal Poly: Tues. Beg. 7:8p. Int. 8:9p. Adv. 9:10p)

New Classes start 9/27, 10/25  
register at classes Meet in Graphic Arts 106  
Instr. Alina Sierra Sponsored by ASI Rec Sports

SLO: Wed. Beg. 7:8p. Int. 8:9p. Adv. 9:10p  
New Classes start 9/7, 10/5, 11/2  
Meet at Meadow Park (South St. & Broad)  
Instr. Alina Sierra

## EVENING Child Care

- Evening Child Care for children, ages 3 to 8,
- A new program designed for working parents and for parents attending night classes.

- Monday through Friday, 6:30 pm to 10:30 pm.
- Staffed by credentialed teachers.
- Quality Christian Care.
- Discounts for families with two or more children.
- Children must enroll for a minimum of one night per week. No. Drop-ins allowed.

Evening Child Care begins on Monday, September 26.  
For more information, call 543-8469



**ZION CHRISTIAN SCHOOL**

1010 Foothill Blvd. San Luis Obispo, CA 93401

**A College Degree and no plans?**

**Become a Lawyer's Assistant**

The **UNIVERSITY OF SAN DIEGO**, offers an intensive **ABA Approved** post graduate 14 week **LAWYER'S ASSISTANT PROGRAM**. This Program will enable you to put your education to work as a skilled member of the legal team.

A representative will be on campus

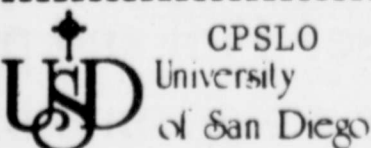
Friday, October 7, 1988

9:00am - 12:00am

at the Placement Center

For more information

contact your career center at: 756-2501



**Lawyer's Assistant Program**  
Room 318, Serra Hall  
San Diego, CA 92110  
(619) 260-4579

Name \_\_\_\_\_  
Current Address \_\_\_\_\_  
City \_\_\_\_\_ State \_\_\_\_\_ Zip \_\_\_\_\_  
Current Phone # \_\_\_\_\_  
Permanent Phone # \_\_\_\_\_

## RESERVE OFFICERS' TRAINING CORPS



**BELIEVE IT OR NOT, THIS GUY IS IN CLASS.**

If you're looking for excitement and adventure, you'll find it when you enroll in Army ROTC. It's not your ordinary college elective. Find out more. Contact Larry Stayton, Dexter Room 118. Or call 756-ROTC.



**ARMY ROTC**  
THE SMARTEST COLLEGE COURSE YOU CAN TAKE.



# CELEBRATE THE NEW SCHOOL YEAR WITH... A WOODSTOCK'S PIZZA

**541-4420**

1015 Court St. (across from Osos Street Subs)

## WOODSTOCK'S PARTY COUPON!!

Come in with a party of three  
or more and receive a free  
pitcher of soft drinks when  
you order a large pizza!

one coupon per pizza

exp. 10/12/88

## WOODSTOCK'S \$1.00 OFF ANY PIZZA

one coupon per pizza

exp. 10/12/88

## Food, transportation prices rise in state

LOS ANGELES (AP) — Californians paid more for food, housing and transportation in August, with prices rising 0.9 percent in the San Francisco Bay area and 0.4 percent in Southern California, the government reported.

Nationally, inflation as measured by the Consumer Price Index rose 0.4 percent from July to August, an increase equivalent to an annual inflation rate of 5.2 percent.

State figures released by the U.S. Labor Department Wednesday show prices rising for most items except apparel, where prices were pushed down by

seasonal sales.

In the San Francisco-Oakland-San Jose area, prices overall were up 0.9 percent from July and 5.1 percent from August 1987.

Bay area food and beverage prices registered their sixth consecutive monthly increase, rising 0.3 percent primarily because of a jump in the price of meat, poultry, fish and eggs. Housing costs jumped 1.4 percent, driven mostly by price increases for out-of-town lodging for area travelers.

Transportation prices rose 0.8 percent. Apparel and upkeep costs declined 2.2 percent.



WE REPAIR ALL  
FOREIGN AND DOMESTIC CARS  
Servicing San Luis Obispo  
For over 16 years

Joe Couzzi-owner  
544-8177

12 Higuera  
SLO., CA 93401

# Welcome Back!

IBM and El Corral Bookstore want to help you kick off a great, new school year. Therefore, we are pleased to announce the:

## IBM PS/2 BONANZA II

During the next few weeks we are going to offer you an IBM Personal System/2 computer in a special package and at a special price. Just stop by El Corral Bookstore to see how the IBM PS/2 can help you organize notes, write and revise papers, produce high-quality graphics, and more. Not only will you get IBM quality and reliability, but you'll find that the PS/2 is easy to learn and easy to use. Full and part-time students, faculty and staff are eligible. Now *that's* a welcome back!

**September 26 through October 28**

*Start practicing for the real world.*



# SAVE UP TO 80%

## ON GREAT MAGAZINES AT EDUCATIONAL DISCOUNTS

Please allow 6-8 weeks for weeklies and 6-12 weeks for others to start  
Special rates are subject to publisher's change and good in U.S.A.

 24 iss \$13.97 MC reg \$27.94 Newsstand \$36		 54 iss \$32.13 SI reg \$64.26 Newsstand \$121.50 28 iss \$16.66 SI2 108 iss \$64.26 SI5		<div>SAVE UP TO 80%</div> <div>ON GREAT MAGAZINES AT EDUCATIONAL DISCOUNTS</div> <div>Please allow 6-8 weeks for weeklies and 6-12 weeks for others to start Special rates are subject to publisher's change and good in U.S.A.</div>				 1 yr \$33.80 TV reg \$37.44 Newsstand \$39		 52 iss \$29.12 TI reg \$58.24 Newsstand \$104 21 iss \$11.76 TI2 104 iss \$58.24 TI5																										
 52 iss \$30.94 PO reg \$61.88 Newsstand \$87.88 26 iss \$15.47 PO2		 13 iss \$16.25 LI reg \$32.50 Newsstand \$35.40						 1 yr \$27.95 BW reg \$39.95 Newsstand \$102 33 iss \$17.95 BW2		 1 yr \$19.98 NY reg \$35 Newsstand \$97.50																										
 27 iss \$23.99 FT reg \$47.97 Newsstand \$94.50		 52 iss \$23.40 NE reg \$41.08 Newsstand \$104 25 iss \$11.25 NE2 104 iss \$46.80 NE4		 1 yr \$7.97 FS reg \$15.94 Newsstand \$23.40		 1 yr \$20 NY reg \$32 Newsstand \$91 2 yrs \$40 NY2		 1 yr \$12.95 PA reg \$20 Newsstand \$23.40		 1 yr \$15.95 SV reg \$21																										
 1 yr \$11.97 LH reg \$19.95 Newsstand \$18		 52 iss \$19.89 US reg \$39.75 Newsstand \$100 26 iss \$9.95 US2		 26 iss \$17.95 RS reg \$25.95 Newsstand \$62.90		 1 yr \$8 PT reg \$15.99 Newsstand \$23.40		 1 yr \$9.95 EQ reg \$17.94 Newsstand \$35.40		 12 iss \$9.97 MT reg \$19.94 Newsstand \$30																										
 1 yr \$8.97 PS reg \$13.94 Newsstand \$21		 12 iss \$15.96 OM reg \$24 Newsstand \$36		 1 yr \$11.97 GD reg \$19.94 Newsstand \$30.00		 13 iss \$15.99 MO reg \$31.95 Newsstand \$38.35																														
<b>AMERICAN PHOTOGRAPHER</b> 8 iss \$5.98 AP		<b>ATLANTIC</b> 12 iss \$9.95 AT reg \$9.95		<b>AUDIO</b> 12 iss \$9.97 AU Reg \$19.94		<b>BASEBALL DIGEST</b> 10 iss \$9.97 BS		<b>BASKETBALL DIGEST</b> 8 iss \$7.97 BK		<b>BETTER HOMES &amp; GARDENS</b> 1 yr \$11 BH																										
<b>BICYCLING</b> 10 iss \$9.97 BI reg \$15.97		<b>BOATING</b> 12 iss \$16.97 BO reg \$21.94		<b>CAR CRAFT</b> 12 iss \$9.97 CF reg \$15.94		<b>CAR &amp; DRIVER</b> 1 yr \$11.99 CA reg \$16.98		<b>CHANGING TIMES</b> 12 iss \$18 CH reg \$18		<b>CHILD LIFE</b> 1 yr \$9.97 CL reg \$11.95																										
<b>CHILDREN'S DIGEST</b> 1 yr \$9.97 CT		<b>CONSUMER'S DIGEST</b> 1 yr \$9.97 CD		<b>COSMOPOLITAN</b> 6 iss \$10.50 CI reg \$10.50		<b>CYCLE</b> 12 iss \$7.97 CY reg \$15.94		<b>CYCLE WORLD</b> 1 yr \$7.97 CW reg \$15.94		<b>DISCOVER</b> 12 iss \$14.95 DV reg \$27																										
<b>EBONY</b> 1 yr \$12 EB reg \$16		<b>ESSENCE</b> 1 yr \$9.96 ES reg \$12		<b>FANTASY &amp; SCI. FICTION</b> 10 iss \$15 FF		<b>FOOTBALL DIGEST</b> 10 iss \$9.97 FD		<b>FORBES</b> 1 yr \$29.95 FB reg \$45		<b>GAMES</b> 6 iss \$11.97 GA reg \$11.97																										
<b>GOLF</b> 1 yr \$9.97 GO reg \$15.94		<b>GOOD FOOD</b> 12 iss \$11.97 GF reg \$12		<b>GOURMET</b> 12 iss \$12.50 GT reg \$18		<b>HARPER'S BAZAAR</b> 6 iss \$15.90 HB reg \$15.90		<b>Harper's Magazine</b> 1 yr \$11.97 HA reg \$18		<b>HEALTH</b> 1 yr \$11 FH reg \$22																										
<b>HIGH FIDELITY</b> 1 yr \$6.98 HF reg \$13.95		<b>HOCKEY DIGEST</b> 8 iss \$7.97 HD reg \$18		<b>HOME MECHANIX</b> 1 yr \$8.97 MI reg \$15		<b>HOT ROD</b> 12 iss \$11.95 HR reg \$17.94		<b>HUMPTY DUMPTY</b> 1 yr \$9.97 HU reg \$11.95		<b>INCOME OPPORTUNITIES</b> 12 iss \$4.98 IO																										
<b>INSIDE SPORTS</b> 8 iss \$7.97 IS reg \$12		<b>INSTRUCTOR</b> 10 iss \$11.97 IR reg \$22.22		<b>JACK &amp; JILL</b> 1 yr \$9.97 JJ reg \$11.95		<b>LEARNING</b> 1 yr \$12.96 LE reg \$18		<b>Metropolitan Home</b> 1 yr \$11.97 MH reg \$15		<b>Modern Photography</b> 1 yr \$6.99 MP reg \$13.98																										
<b>MONEY MAKER</b> 1 yr \$9.98 MM reg \$13.98		<b>MOTHER JONES</b> 1 yr \$16 MJ reg \$24		<b>MOTOR CYCLIST</b> 12 iss \$7.97 MR reg \$15.94		<b>MS</b> 1 yr \$10.97 MS reg \$16		<b>NATIONAL LAMPOON</b> 1 yr \$8.95 NL reg \$15.95		<b>NEW REPUBLIC</b> 1 yr \$28 NR reg \$56																										
<b>NEW WOMAN</b> 12 iss \$12.97 NM reg \$15		<b>1001 HOME IDEAS</b> 1 yr \$11 DI reg \$22		<b>Organic Gardening</b> 12 iss \$11.88 OG reg \$13.97		<b>OUTSIDE</b> 12 iss \$12.95 OT reg \$18		<b>OUTDOOR LIFE</b> 1 yr \$8.97 OL reg \$13.94		<b>PENTHOUSE</b> 1 yr \$30 PN reg \$36																										
<b>PHOTOGRAPHIC</b> 12 iss \$7.97 PH reg \$15.94		<b>PLAYBOY</b> 1 yr \$19 PL reg \$26		<b>POPULAR PHOTOGRAPHY</b> 12 iss \$6.99 PP		<b>PRACTICAL HOMEOWNER</b> 9 iss \$9.97 NS		<b>PREVENTION</b> 1 yr \$13.97 PR reg \$13.97		<b>RADIO ELECTRONICS</b> 1 yr \$15.97 RA																										
<b>ROAD &amp; TRACK</b> 1 yr \$12.99 RT reg \$19.94		<b>RUNNER'S WORLD</b> 12 iss \$12.97 RW reg \$19.95		<b>SAVVY</b> 12 iss \$9 SY reg \$18		<b>SCIENCE DIGEST</b> 6 iss \$9.95 SC reg \$12.95		<b>SKI</b> 8 iss \$6.97 SK reg \$9.94		<b>SKIING</b> 7 iss \$5.97 SG reg \$11.95																										
<b>SKIN DIVER</b> 12 iss \$11.95 SN reg \$19.94		<b>SOCCER DIGEST</b> 6 iss \$7.97 SD reg \$9.95		<b>SPORT</b> 12 iss \$7.97 SP reg \$12		<b>STEREO REVIEW</b> 12 iss \$6.97 ST reg \$13.94		<b>SUCCESS</b> 10 iss \$8.97 SU reg \$17.94		<b>TENNIS</b> 1 yr \$8.97 TN reg \$17.94																										
<b>THE ARTIST</b> 9 iss \$12.47 TA reg \$18		<b>TRUE STORY</b> 1 yr \$9.97 TS reg \$14.95		<b>TURTLE</b> 1 yr \$9.97 TT reg \$11.95		<b>US</b> 26 iss \$15.97 UM reg \$23.95																														
<b>USA TODAY</b> 65 iss \$23.95 UA reg \$32.50		<b>VIDEO</b> 1 yr \$6 VI reg \$12		<b>VIDEO MRKTPLCE</b> 6 iss \$9.97 VM reg \$12		<b>VIDEO REVIEW</b> 1 yr \$7.97 VR reg \$12																														
<b>VILLAGE VOICE</b> 1 yr \$19.95 VV reg \$37.44		<b>WASHINGTON POST</b> 26 iss \$19.50 WP reg \$21		<b>COMPUTER TITLES</b>																																
<b>WEIGHT WATCHERS</b> 12 iss \$13.97 WW reg \$13.97		<b>WOMEN'S SPORTS</b> 12 iss \$10.95 WO reg \$12.95		<table><tr><th>Magazine</th><th>Term</th><th>Mag. Code</th><th>Reg Price</th><th>USS Price</th></tr><tr><td>A+ (Apple Comp.)</td><td>12 iss.</td><td>A+</td><td>24.97</td><td>14.97</td></tr><tr><td>Classrm Cmptr Lrng</td><td>8 iss.</td><td>CQ</td><td>22.50</td><td>18.00</td></tr><tr><td>Compute</td><td>12 iss.</td><td>CP</td><td>24.00</td><td>14.40</td></tr><tr><td>Computer's Gazette</td><td>12 iss.</td><td>CZ</td><td>24.00</td><td>18.00</td></tr></table>								Magazine	Term	Mag. Code	Reg Price	USS Price	A+ (Apple Comp.)	12 iss.	A+	24.97	14.97	Classrm Cmptr Lrng	8 iss.	CQ	22.50	18.00	Compute	12 iss.	CP	24.00	14.40	Computer's Gazette	12 iss.	CZ	24.00	18.00
Magazine	Term	Mag. Code	Reg Price	USS Price																																
A+ (Apple Comp.)	12 iss.	A+	24.97	14.97																																
Classrm Cmptr Lrng	8 iss.	CQ	22.50	18.00																																
Compute	12 iss.	CP	24.00	14.40																																
Computer's Gazette	12 iss.	CZ	24.00	18.00																																
<b>WORKING MOTHER</b> 24 iss \$12.95 WM reg \$25.90		<b>WORKING WOMAN</b> 12 iss \$9 WN reg \$18		<table><tr><td>Family Computing</td><td>12 iss.</td><td>FC</td><td>19.97</td><td>10.99</td></tr><tr><td>High Technology</td><td>12 iss.</td><td>HT</td><td>30.00</td><td>24.95</td></tr><tr><td>Mac User</td><td>12 iss.</td><td>MU</td><td>27.00</td><td>14.97</td></tr></table>								Family Computing	12 iss.	FC	19.97	10.99	High Technology	12 iss.	HT	30.00	24.95	Mac User	12 iss.	MU	27.00	14.97										
Family Computing	12 iss.	FC	19.97	10.99																																
High Technology	12 iss.	HT	30.00	24.95																																
Mac User	12 iss.	MU	27.00	14.97																																
<b>WORLD PRESS REVIEW</b> 1 yr \$16.97 AW		<b>WORLD TENNIS</b> 12 iss \$7.97 WT reg \$15.94		<table><tr><td>Mac World</td><td>12 iss.</td><td>MW</td><td>30.00</td><td>15.00</td></tr><tr><td>PC Computing</td><td>12 iss.</td><td>PG</td><td>19.94</td><td>14.97</td></tr><tr><td>PC Magazine</td><td>18 iss.</td><td>PE</td><td>36.79</td><td>19.97</td></tr></table>								Mac World	12 iss.	MW	30.00	15.00	PC Computing	12 iss.	PG	19.94	14.97	PC Magazine	18 iss.	PE	36.79	19.97										
Mac World	12 iss.	MW	30.00	15.00																																
PC Computing	12 iss.	PG	19.94	14.97																																
PC Magazine	18 iss.	PE	36.79	19.97																																
<b>WRITER'S DIGEST</b> 9 iss \$12.47 WD reg \$18		<b>YOUNG MISS</b> 10 iss \$10.95 YM reg \$14		<table><tr><td>PC World</td><td>12 iss.</td><td>PW</td><td>29.90</td><td>14.97</td></tr><tr><td>PC Tech. Journal</td><td>12 iss.</td><td>PJ</td><td>34.97</td><td>19.97</td></tr><tr><td>Personal Computng</td><td>1 year</td><td>PC</td><td>18.00</td><td>11.97</td></tr></table>								PC World	12 iss.	PW	29.90	14.97	PC Tech. Journal	12 iss.	PJ	34.97	19.97	Personal Computng	1 year	PC	18.00	11.97										
PC World	12 iss.	PW	29.90	14.97																																
PC Tech. Journal	12 iss.	PJ	34.97	19.97																																
Personal Computng	1 year	PC	18.00	11.97																																

FOR FASTER SERVICE CALL 1-800-852-0852

OR MAIL COUPON TO: UNIVERSITY SUBSCRIPTION • DOWNERS GROVE, IL 60515

LOWEST PRICES ANYWHERE

1. Guaranteed lowest price or we will refund the difference.  
2. Guaranteed satisfaction or we will refund any unused portion of a subscription ordered through us.

HOW TO ORDER: Just write the codes for the magazines you wish to order (example TV for one year TV GUIDE) circling ® if renewal. Print your name and address and mail today.

<

FOR FASTER SERVICE CALL 1-800-852-0852

OR MAIL COUPON TO: UNIVERSITY SUBSCRIPTION • DOWNERS GROVE, IL 60515

### LOWEST PRICES ANYWHERE

- Guaranteed lowest price or we will refund the difference.
- Guaranteed satisfaction or we will refund any unused portion of a subscription ordered through us.

**HOW TO ORDER:** Just write the codes for the magazines you wish to order (example TV for one year TV GUIDE) circling ® if renewal. Print your name and address and mail today.

\_\_\_\_\_ R \_\_\_\_\_ R \_\_\_\_\_ R \_\_\_\_\_ R \_\_\_\_\_ R

☐ Mrs. ☐ Mr. ☐ Miss ☐ Ms. \_\_\_\_\_

Address \_\_\_\_\_

City \_\_\_\_\_ State \_\_\_\_\_ Zip \_\_\_\_\_

☐ College Student. Year of grad. 19 \_\_\_\_\_ ☐ Educator ☐ Administrator

School Name \_\_\_\_\_ 3809

☐ Budget Plan (1/3 per month) ☐ Bill Me. ☐ Enclosed \$ \_\_\_\_\_  
Sign Here \_\_\_\_\_ (Payable to USS)

☐ VISA ☐ MASTERCARD Good thru \_\_\_\_\_

Card No. \_\_\_\_\_

•Payment with order only •Only for new subscription



**Supercuts**

we cut hair for your ego not ours..

**\$2 Off**

**Any Haircut**

Madonna Road Plaza 549-8588

Open 7 days a week

one coupon per person

Exp. Oct. 15

6 Thursday, September 22, 1988 Mustang Daily

## Woman sets herself afire at S.F. school

SAN FRANCISCO (AP) — A 26-year-old woman poured a circle of kerosene around herself and then proceeded to set herself afire at a school playground, police said Wednesday.

San Francisco Police Department homicide inspector Michael Byrne said the victim's name was known but could not be

released until the coroner's office confirmed her identity.

Late Tuesday night, the woman apparently poured a circle of kerosene 30 feet across, then sat on a mat in the center, doused herself with it and set herself afire on a playground behind a junior high school in San Francisco, police said.

Byrne, who said police believe the woman has a history of mental problems, said the victim wrote her name and father's address in chalk on the ground.

Mission Station police officer Phyllis Ford reported the discovery nearby of a purse, glasses, shoes and cigarette lighter.

# END OF SUMMER

## SALE

Up to  
50% OFF  
select  
cotton  
clothing



20-50%  
OFF ALL  
swimwear



949 Higuera • SLO  
544-6041

satisfaction

921 State • SB

## UNFURNISHED STUDIOS

**Yours For As Low As \$340/mo.**

At a spacious 390 sq. ft., our unfurnished studios offer you the ultimate in privacy, and they're in great condition!

If you need a **FURNISHED PLACE**, check out

These Rates:

PRIVATE STUDIOS	from \$390/mo.
SHARED STUDIOS	from \$200/mo.
PRIVATE FLAT ROOM	from \$410/mo.
SHARED FLAT ROOM	from \$210/mo.

***Get Your Year Off To A Galloping Start***  
***CALL US TODAY!***



# 543-4950

1 MUSTANG DRIVE, SAN LUIS OBISPO (next to the Cal Poly Stadium)



SONG

From page 1  
D.M.C., inventing lyrics lam-  
basting CAPTURE. Dickey was  
inspired.  
"I ran up to my room, where I  
have a four-track recorder, a  
keyboard and a guitar and I  
recorded the song," said Dickey.  
"I took it to KCPR but they said  
it was too rough, that I needed to  
remix the chorus."  
So Dickey remixed it and  
brought it back to KCPR.  
This time the station approved  
and it later played the song on  
the air.  
The song, entitled simply  
CAPTURE, begins with a stan-  
dard dial tone and is soon  
followed by push-button phone  
dialing tones and then — a busy  
signal.  
A rap-type synthesizer rhythm  
and back beat are introduced and  
the dialing continues as Dickey  
deadpans: "I call on the phone at  
7 a.m., just like I thought it was  
— busy then, I pushed the redial  
a hundred times and all day long  
someone's on the line ..."  
"Capture — rather stand in  
line, Capture — just a waste of  
time ..."  
Students who notice the song's  
repetitious rhythm and unen-  
chanting melody may be unim-  
pressed.  
But those who believe they got  
a raw deal through Capture will  
likely appreciate this cynical,  
sardonic reaction to the already  
much-berated system.

FREE SPINAL EXAMINATION



Danger Signals of Pinched Nerves:

1. Neck Pain or Stiffness
2. Low Back or Hip Pain
3. Frequent Headaches
4. Numbness in Hands or Feet
5. Nervousness
6. Arm and Shoulder Pain
7. Dizziness or Loss of Sleep



DR. MARK R. STEED, D.C.

Why FREE? Thousands of area residents have spine related problems  
which usually respond to chiropractic care.  
This is our way of encouraging you to find out if you have a problem that  
could be helped by chiropractic care. It is also our way of acquainting you  
with our staff and facilities.  
Examination includes a minimum of 10 standard tests for evaluating the  
spine and contour analysis photo as shown above.  
While we are accepting new patients, no one need feel any obligation.

San Luis Obispo  
Chiropractic  
Center

Because We Care

Dr. Mark R. Steed

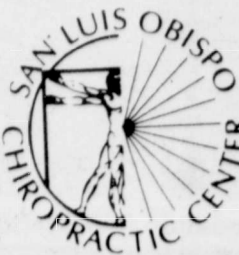
Chiropractor

547 Marsh Street

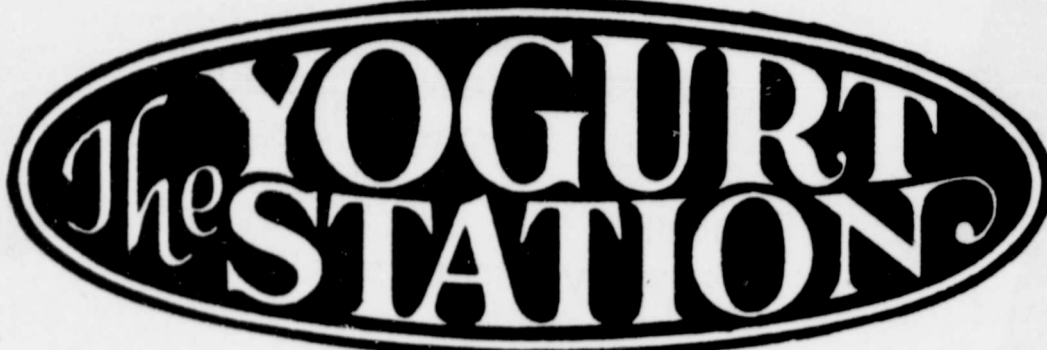
San Luis Obispo

Please call

541-BACK



"Best Wishes for the School Year"



Soft Frozen yogurt  
cookies & bagels  
juices & drinks

UNIVERSITY SQUARE CENTER  
890 FOOTHILL BOULEVARD  
PHONE 544-2104

OPEN  
7 DAYS A WEEK  
10:00 a.m. - 11:00 p.m.



Happy Hour at 1865!

Monday - Friday 4:30 - 7:00pm

- Now serving **BEER on tap!**
- \$5 Pitchers of Margaritas
- Well drinks \$1.50
- Fresh fruit drinks available

Complimentary Hor d' oeuvres

Wednesday - Friday



1865 Monterey St.

544-1865

APARTMENTS  
FOR  
RENT

DANISH CHALET

- \*Small complex for serious students
- \*2 bedrooms, 1 1/2 bath
- \*Furnished for up to four students
- \*Close to campus and shopping
- \*BBQ grills

324 N. Chorro

CZECH CHALET

- \*Close to campus and downtown
- \*2 bedrooms, 1 1/2 bath
- \*Furniture for up to four students
- \*Dishwasher
- \*Sun decks and BBQ grills

572 Foothill Blvd.

MILL STREET

- \*Close to Poly
- \*Furnished
- \*2 bedrooms, 1 bath
- \*Spacious apartments
- \*Walking distance to town
- \*Laundry facility

1512 Mill Street

For Information Call

549-0471

or

543-5292

10 & 12 month leases

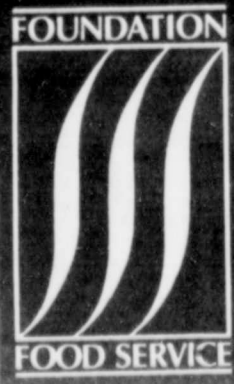
MEAL PLANS

- No shopping, cooking or clean up
- Top quality foods prepared fresh daily
- Four locations convenient to classes

Meal Card Locations

		Breakfast	Lunch	Dinner
Vista Grande Cafeteria	Mon-Fri Sat-Sun	7am-9am 8:30am-noon	11am-1pm 12:15-2pm	4:30-7:30pm closed
University Dining Room	Mon-Fri Sat-Sun	6:30am-10am 10am-noon	10:30-1:30pm 12:15-2pm	4:30-7pm 4pm-7pm
Sandwich Plant	Mon-Fri Sat-Sun	6:30am-10am closed	10:30am-4pm closed	closed closed
Snack Bar	Mon-Fri Sat-Sun	7am-10am closed	10:30am-4pm closed	closed closed

Quarterly 19	19 meals per week	\$640
Quarterly 14	14 meals per week	\$592
Quarterly 6	6 meals per week	\$260
Quarterly 4	4 lunches per week (mon thru fri only)	\$165



Call 756-5939

For further information.





Foundation Administration Building construction K.M. CANNON/Mustang Daily

## Foundation building gives ASI space

By Jeffery Mcphail  
Staff Writer

The estimated \$1.6-million construction of the Foundation Administration Building, across the street from the Faculty Office Building, will cost students 65 parking spaces.

The loan to build the one-story structure, which was begun Sept. 15, will be repaid from the organization's non-state operating revenue, said Al Amaral, executive director of the Foundation.

Doug Gerard, Executive Dean, Facilities Administration, said construction is projected to take about 11 months, ending in August of 1989. Gerard said the building site at the west end of the H4 faculty parking lot eliminates 65 spaces.

To accommodate the displaced faculty, 65 student parking spaces, in the H2 lot across from the library and in the G1 lot along Grand Avenue, have received faculty markings. Faculty reaction to the change was "some grumbling, nothing serious," according to Gerard.

The Foundation now occupies nearly 3,000 square feet of office space on the second floor of the University Union. After the move, the space will become offices for the Associated Students

Inc. which is now short of space, said Roger Conway, executive director of ASI and the UU.

"We're really short-roomed around here," said Conway. "We've got one person in a closet."

The offices now filled by the ASI will become a temporary home for the Rec Sports, Cal Poly Radio, KCPR and Disabled Student Services have made requests for some of the space once Rec Sports leaves.

Maino Construction of San Luis Obispo is the contractor on the project. The building was designed by the Los Angeles architecture firm of Riebsamen, Nickols and Rex, the same firm who designed the faculty office building. Riebsamen graduated from Cal Poly in the 1950's.



The Hottest New Nightclub  
on the Central Coast

Featuring LIVE Entertainment  
Thursday - Saturday..9pm  
Sunday...4pm

This Week, direct from Hollywood;  
"THE CHETS"

Rated by the L.A. Times as the

'Beatles of the 80's'

Drink specials are served every night!!

Thursdays are "Cantina Cooler Nights" all Tropical fruit drinks just \$2.95 each

Fridays are "South of the Border Nights" all Tequila drinks just \$1.95 each

"Margarita Hours" Every night 4pm-8pm \$5 pitcher

Laguna Village Shopping Center - Madonna Rd. & Los Osos Vly. Rd. 541-4150

## MID-STATE ELECTRONICS

Has provided Cal Poly for over 33 years  
with small parts, big parts, batteries, &  
every kind of wire or cable.  
In short we carry everything in electronic  
parts, tools, books, and supplies.

1441 Monterey St., SLO  
543-2770



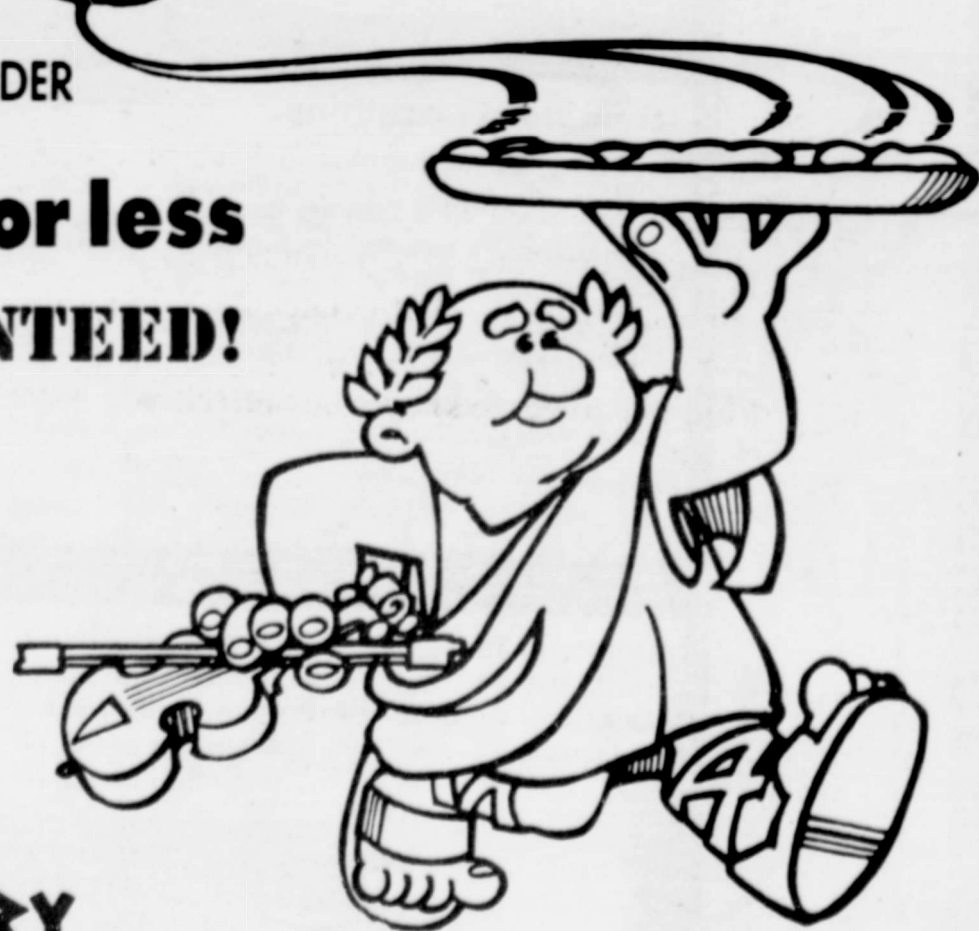
YOUR PIZZA  
OR HERO SANDWICH ORDER  
DELIVERED IN  
**30 Minutes or less**  
**GUARANTEED!**

OR YOU PAY ONLY  
**1/2 Price**  
FOR YOUR  
TOTAL ORDER

**FREE DELIVERY**

**543-1114**

1017 MONTEREY ST. SAN LUIS OBISPO



VIDEOS  
ONLY **99¢**

AND DELIVERED WITH  
YOUR FOOD ORDER



**\$2.00 OFF**

Any order of  
\$10.00 or more!

**FREE DELIVERY**

1017 Monterey  
543-1114

543-1114

with coupon  
expires 10/12/88



**\$1.00 OFF**

Any order of  
\$5.00 or more!

**FREE DELIVERY**

1017 Monterey  
543-1114

543-1114

with coupon  
expires 10/12/88



**\$2.00 OFF**

Any order of  
\$10.00 or more!

**FREE DELIVERY**

1017 Monterey  
543-1114

543-1114

with coupon  
expires 10/12/88



**\$1.00 OFF**

Any order of  
\$5.00 or more!

**FREE DELIVERY**

1017 Monterey  
543-1114

543-1114

with coupon  
expires 10/12/88





# A KITE ON THE H O R I Z O N

**Kappa Alpha Theta is coming to Cal Poly San Luis Obispo, and we want you to join in our celebration!**

Kappa Alpha Theta's kite will soon be flying at Cal Poly San Luis Obispo, and we invite you to help us celebrate.

We're looking for outstanding young women, like you, who are eager to form lasting friendships, gain leadership experience and share their talents.

**What is Kappa Alpha Theta?**

Kappa Alpha Theta is a fraternity for women -- the first Greek-letter fraternity for women -- with more than 114 college chapters and 290 alumnae groups throughout the United States and Canada.

**What does Kappa Alpha Theta offer?**

- **Support of Academic Excellence**  
Scholarship has been the cornerstone of Kappa Alpha Theta since it was established in 1870. Theta encourages high scholastic achievement and the pursuit of knowledge through innovative programming and more than \$100,000 in scholarships awarded annually by the Kappa Alpha Theta Foundation. Theta helps teach leadership skills, openmindedness and the desire to expand personal interests.
- **Support of Community Service**  
Theta is an outlet for community service at national and local levels. Theta collegians and alumnae give unselfishly through volunteer work and fundraising for charities and those less fortunate.
- **Friendship**  
Kappa Alpha Theta offers members fun and friendships based on shared goals and ideals. Thetas are women who come together to share the college experience and to grow in a rewarding atmosphere. And they are women who carry that experience beyond college through lasting friendships and continued support from Fraternity programs such as Theta's career connection program.

We'd like to get to know you and tell you more about Kappa Alpha Theta!

Simply sign up now for an interview at the Student Life and Activities Office, University Union #217.

Interviews will be held Monday, October 10 and Tuesday, October 11 from 9 a.m. to 3 p.m. in Chumash Auditorium. An open house and informational party will be held Sunday, October 9 from 5:30 to 7:30 p.m. at Chumash Auditorium. For more information call Panhellenic Adviser Walt Lambert at 756-2476.

**We're looking forward to celebrating with you!**





WOW



ONE YEAR

LIMITED OFFER



- ☆ FITNESS MACH.
- ☆ SUPERVISION
- ☆ STATIONARY BIKES
- ☆ DRESSING FACILITIES
- ☆ (6) DAYS WEEKLY

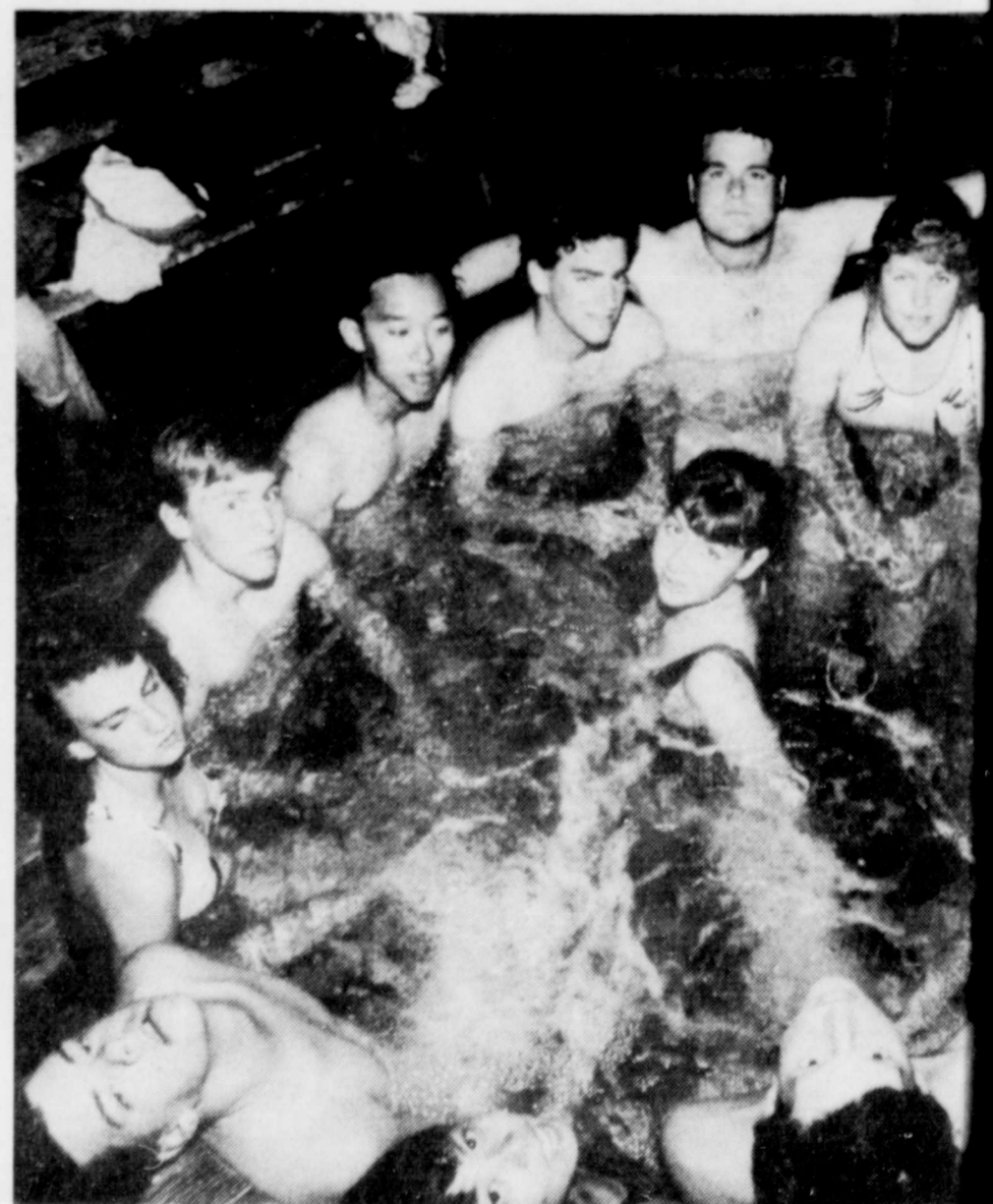
**GOLDS GYM**  
3183 DUNCAN RD.

**541-1951**

Photos by Kevin Cannon and Darrel

Clockwise from upperleft; Group 69 keeps warm at the Sunset drive-in, tours Morro Bay and dances up a storm at the Graduate. Andy Lavelle of group 36 carries his co-counselor in search of wowies. Linda is captured by a rowdy group of wowies at Playfair in the Mustang

Stadium. Dian group 96 help people passer, group. Group 69 tubs at Syc challenges another





# SPOTLIGHT

Eight-page Arts and Entertainment Magazine

## In the Palm of his hand



By Donna Taylor, Spotlight Editor

**S**omewhere over the Rainbow lies a little moviehouse that owner Jim Dee hopes will be his second pot of gold.

The Palm Theatre opened its doors Aug. 26 on 817 Palm Street, and Dee, who also owns the Rainbow Theatre around the corner on Osos, is happy to see his five-month long project nearly completed.

"The Palm will run the same type of movies that the Rainbow shows," said Dee, who has managed the Rainbow with his wife Patty since he opened it 10 years ago. "Foreign films, artsy films, things that aren't normally seen at other theaters. Luckily, this community is halfway adventurous, and it has responded well to the Rainbow."

For the past three or four years, Dee has "looked into the possibility of another location" for a second moviehouse. In March, he leased the building on Palm Street which has sat vacant for about two years.

"The construction of the existing building into a theater was a huge project," Dee said. "We had to turn flat floors into sloped floors to get a line of sight. It was rather difficult."

The Palm has one screen operating with a 135-seat capacity. Dee plans to open a second screen Friday, which will have up to an 80-seat capacity. Admission is \$4.50, the same as the Rainbow, with \$2.50 bargain night on Tuesdays.

"I consider San Luis to be an exciting town," Dee said. "But some people say that when the sun

goes down, the sidewalks roll up. I'm hoping the Palm, and the Rainbow for that matter, will change that."

Dee's main challenge, he said, is not getting the "alternative" movies that he runs but getting people interested in coming to see them.

"Europe is famous for having bustling nightlives," he said. "It's quiet in the day but comes alive at night. I want the Palm to contribute to this city's nightlife. You know, people go to dinner then a movie, then go have coffee to discuss the movie," especially if the movie is as thought-provoking as most Rainbow (and now Palm) films, he said.

The sizeable number of moviegoers who lined up for Tuesday's bargain show *Bagdad Cafe* seemed pleased with the new theater, and a majority were regular Rainbow patrons.

Doc Heirlich said the most important aspect of theaters like the Palm and Rainbow is their maturity level.

"There's no screaming kids or students throwing popcorn around," he said. "I think the Palm will do well as a compliment to the Rainbow."

The Palm's design included the construction of three offices, which Dee is renting out to help defray costs.

"I don't know if I'm cut out to be a landlord, but a couple businesspeople are renting the spaces for daytime use," he said. "That cuts the cost to just

See THEATER, page 5



## WELCOME BACK!



\$12.00 STUDENT PRICE  
WITH CAL POLY I.D.

SHAMPOO • CUTS • STYLING  
FOR MEN AND WOMEN

Pick up a student I.D. discount card  
to receive 20% OFF ALL HAIR  
CARE PRODUCTS

## REGIS HAIRSTYLISTS

CENTRAL COAST PLAZA  
543-6002  
APPOINTMENTS & WALK-INS

# Confusion over centers forces change in name

By Suzy Wallace  
Staff Writer

The Cal Poly Center for the Arts played a name game this summer to distinguish itself from another group with a similar purpose.

The center is now Cal Poly Arts, as of Sept. 1, which the executive board chose to alleviate confusion with the San Luis Obispo Foundation for the Performing Arts Center.

Ron Regier, director of Cal Poly Arts, said the word *center* in both of the titles was the major contributor to name difficulties.

The community-sponsored Foundation for the Performing Arts Center is working to raise funds for the proposed performing arts center. Breaking ground

for the construction of the new center is scheduled for 1991 with a tentative opening date in 1993. The building site will be located on campus in the field adjacent to the theatre.

"Both organizations are trying to raise funds to have this center built," Regier said. But each is backed by a different entity: Cal Poly Arts by the university, the foundation by the community.

This fall Cal Poly Arts will launch new approaches to the performing arts.

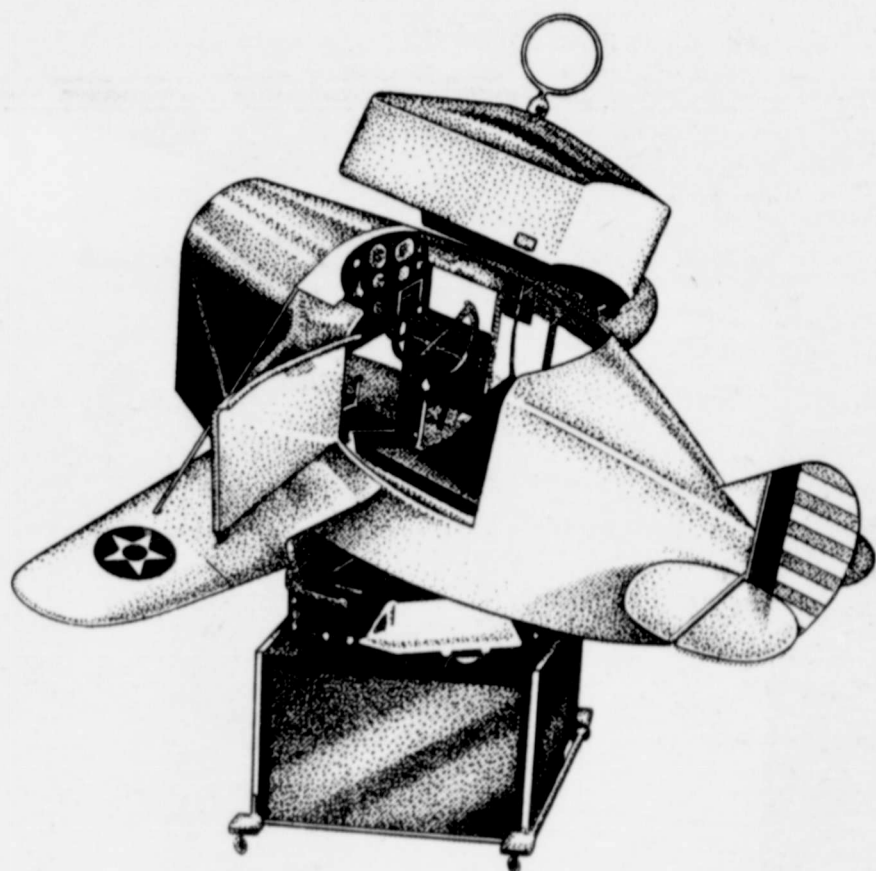
"We've made a serious effort to expand our program into all the art disciplines," said Regier. "It promises to be a very exciting year."

Among new Cal Poly Arts' series added this fall are WriterSpeak, presenting emerg-

ing and established creative writers reading their works and the Debut series, featuring the talents of new and upcoming young solo artists.

Also offered is the Quintessence classical music program, the theatre and dance of touring companies in Centerstage, Polyarts for Youth (which enables school-age children from San Luis Obispo County to attend selected events and exhibitions in the University Union Galerie and the University Art Gallery in the Dexter Building in the Visual Arts series), and the Film program offering outstanding classic films.

Subscription tickets are available for all series as well as individual ticket sales for any event throughout the season.



## We have a unique vehicle for your career.

Flight simulators.

We invented the first one almost 60 years ago. Nicknamed "The Blue Box" and pictured above, it helped train over a quarter million Allied pilots during WWII.

Today, our advanced simulators for jet fighters, helicopters and military aircraft feature real-time, 3-D computer graphics. A mega-scale systems environment. And the ability to convince highly trained pilots they are soaring across the sky—when actually they are sitting just a few feet off the ground.

If you are receiving your BS or MS degree in Computer Science in December, consider sharing our challenges at Link as a software engineer.



Let your imagination  
take flight.



## On-Campus Interviews:

Friday,  
November 18

We'll be on campus to discuss the many benefits of working at Link, including our New Engineer Training (NET) Program designed to help you in the transition from student to professional. Contact your Placement Office for information and to schedule an interview. Link Flight Simulation Division, 1077 East Arques Avenue, P.O. Box 3484, Sunnyvale, CA 94088-3484. Equal Opportunity Employer. U.S. Citizenship required.

## \$12.99 Poly Pack

- includes:
- 4 barbecue Beef Ribs
  - 2 One Quarter Barbecue Chickens
  - 1 Pint Grandpa Tom's Baked Beans
  - 2 Loaves Cornbread with Honey Butter
  - 2 Baked Potatoes with butter, Sour Cream, and Chives



2121 Santa Barbara St.  
(next to Crystal Clean Carwash)  
543-RIBS(7427)

Pick Up Only  
Delivery Add \$1

## Get Into SHAPES!



Say goodbye to dull ears.

Choose from our selection of shapes and stones, and we'll do the rest. Let us pierce your ears now so the healing process will be complete in time for the holidays.

Jorgensen Jewelers 850 Higuera  
543-6706



# Bagdad delves past stereotypes

By Stewart McKenzie, Staff Writer

Next door to SLO's Nordstrom-box parkade structure stands the new Palm Theatre, rising like a phoenix in the ashes of Chinese restaurant row. And as a good sign from the Powers That Be in its first year of operation, one of the best films of the year opened on the unsuspecting public.

*Bagdad Cafe* is an unlikely creation from the mind of Percy Adlon, who wrote and directed it (with his wife Elinore helping in its production). It is a movie that delves beyond its characters' stereotypes to show us that we human beings are pretty much the same.

Jasmine (Marianne Sagebrecht) is a large West Germaner traveling with her husband through the Southwest. A fight in the car ends with Jasmine picking up her suitcase and her hubby taking off in a cloud of dust. On first glance it is quite comical; this well-dressed woman, with an insane amount of cosmetic wear on, quietly dragging her suitcase mile after mile. But the stiffness of her walk suggests she is holding on to her last shred of dignity.

Somehow fate brings her to a lonely, decrepit pit of the movie's namesake, sweat dripping off her lacquered face. She meets Brenda (C.C.H. Pounder) and doesn't know what to think; she's never met a black woman close up before. Brenda doesn't know what to think of this huge woman with broken English and expensive clothes. An inauspicious beginning.

Jasmine gradually gets to know others at the motel, but her relationship with the owner is wary. Brenda has no clue who this newcomer is. Jasmine doesn't say much and looks rich; why would she be staying at what is obviously a dive? Suspicious, Brenda even calls the sheriff out when she discovers lederhosen hanging around Jasmine's room.

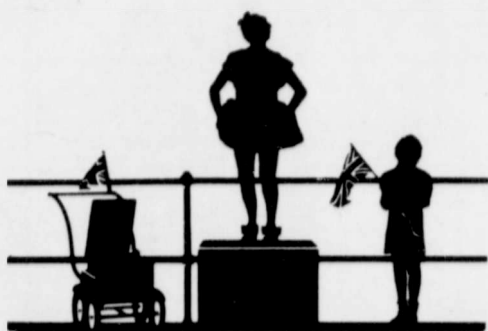
But Jasmine tries her darndest to be accepted, which brings on a poignancy that lasts to the film's end. She cleans up the front desk without permission, angering Brenda but astounding everyone else. She performs simple magic tricks that eventually win over everyone's hearts. She even poses for portrait work by post-hippie artist Mr. Cox (played hilariously by Jack Palance). Jasmine becomes something of a hero at the Bagdad Cafe.

It is a quirky film, heightened by unusual editing and the music of Bob Telson. The setting utilizes the desolation of the des-

ert in much the same way the Caen brothers' *Raising Arizona* did. It is hilarious and yet quite touching (a very difficult thing for this writer to say). But the key to this story is Sagebrecht. What starts as a comical character develops into a full person who has the same needs and wants as the next person.

The only real problems with the movie lie near the end, when reality seems to escape and anything is possible. But this can be forgiven, since in some ways it's very hard to believe this story could have ever taken place. *Bagdad Cafe* is a fable, a parable. That's the beauty of it.

Though the film has been relegated to art theaters and the second-run houses, keep an eye out for this film during Academy time.



*EOC Family Planning*  
S A N L U I S O B I S P O

## The Alternative

- Birth Control Methods
- Contraceptive Exams
- Pregnancy Testing, Counseling, Referral
- Pap Screening & Treatment
- STD Screening and Treatment (for male partners too)
- Night Clinics

All services are confidential regardless of age. 1540 Marsh Street SLO  
Sliding fee scale based on ability to pay. 544-2478

## CENTRAL COAST REALTY

Serving the entire Central Coast

### NEW LISTINGS:

- 4 Bdrm., 2,600 Ft., walk to Poly \$289,000.00
- Near Sinshimer School, 3 bdrm., 1/2 bath \$179,996.00

### Also:

- Near Sinshimer School, 1,400 ft., 2 bdrm., 2 bath, and new built-in BBQ .....\$168,996.00
- Walk to town, 2 bdrm., 1 bath, hardware floors .....\$130,996.00
- Mission Gardens, 2 & 3 bdrms. from.....\$107,996.00
- Many Mobil Homes From.....\$ 15,000.00



1204 Nipomo

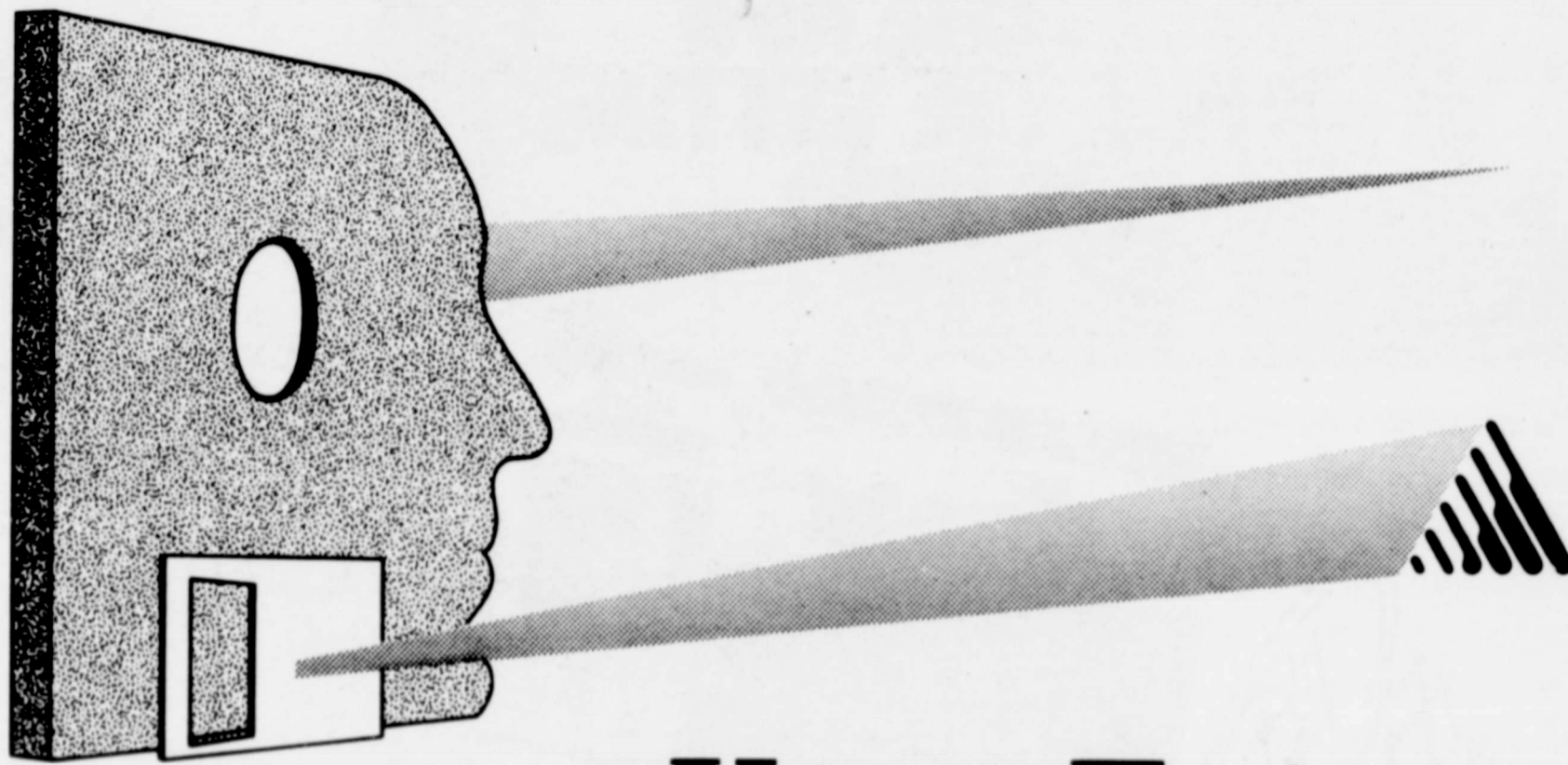
William Graft

549-9996

San Luis Obispo

John Ensz

Ellen Day



## Your Future.

## Watch It Take Shape At Ashton-Tate.

The future. Think about what it has in store for you. After all, you've invested time and energy in your education, so choosing the company that can set the stage for your career is an important decision. That's why you need to learn more about ASHTON-TATE. Because, the future has been a vital part of ASHTON-TATE throughout our history.

As the software industry's emerging leader, we've been shaping the future since our beginning in 1979, as the innovative developer of top selling business software products and publications. ASHTON-TATE develops products for both the IBM PC and Apple Macintosh including database, word processing, desktop publishing, spreadsheet, graphics and integrated software packages.

What can all this mean to you? And, how can ASHTON-TATE help shape your future?

We maintain corporate headquarters in Southern California with development centers in Northern California and Connecticut, and sales offices in every major metropolitan area. Graduating Seniors with Technical degrees are considered for positions in the following areas:

- Software Design & Development
- Software Support
- Software Testing
- Project Management
- Technical Writing & Editing

Those individuals who have the commitment and foresight to journey with us, will discover a progressive work environment with one of the best compensation and benefits packages in the industry. Employees enjoy medical/dental/life insurance, profit sharing, paid vacations and holidays, tuition reimbursement programs, computer purchase program, ASHTON-TATE product discounts, stock purchase and savings investment plans.

Your future. Watch it take shape at ASHTON-TATE.

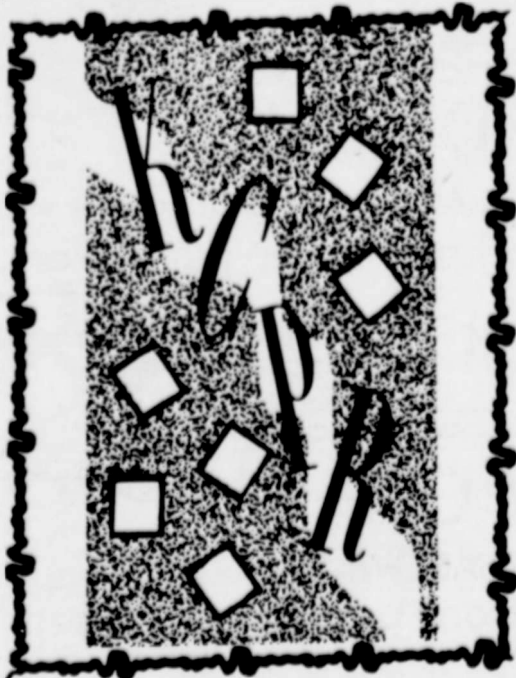
### ON-CAMPUS INTERVIEWS October 24

See your Career Planning and Placement Center for more details and to sign-up.

ASHTON-TATE  
20101 Hamilton Ave.  
Torrance, CA 90502

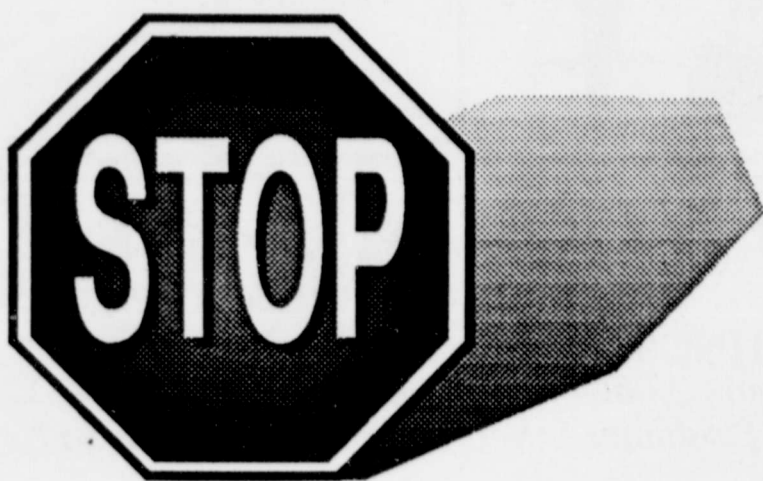
Equal Opportunity Employer

 ASHTON-TATE®





# TEXTBOOK REFUNDS



*Friday, October 7*

El Corral  Bookstore

**GET ONE NOW  
WHILE THE GETTING  
IS GOOD.**



We've made it even easier for you to qualify for a Wells Fargo student VISA card.

We've also made it easy for you to apply. Just give us a call and we'll take your application over the phone. You need to be at least a sophomore at a 4-year California college or university. And a U.S. citizen or permanent resident with a social security number. You must have a checking or savings account opened for at least six months—and be on good terms with your bank and any creditors. Finally, you should have at least \$200 a month in spending money

from verifiable sources after your expenses. That's all it takes to qualify. When you do, you'll be getting a good start on establishing credit.

So get your bank account number and other personal information together and call 1-800-642-BANK today.

Call Wells Fargo today and get 6 months free membership. For a limited time, you'll get 6 months free membership when you qualify for a Wells Fargo student VISA card. Call today.

**WELLS FARGO STUDENT VISA**  
1-800-642-BANK

## Pere Ubu returns with album, tours

By Chris C. Cory, Special to the Daily

In a year which saw an unusually large number of musical comebacks, the return of Pere Ubu would have to rank amongst the most surprising and promising ones, as the group has made its first record and its first tour in seven years.

Widely acknowledged as one of the pioneers of "urban underground" music, this renegade group of leftovers from such bands as Cinderella Backstreet and The Electric Eels gathered in a Cleveland studio in 1975 to produce a single entitled "30 Seconds Over Tokyo." Their unique blend of harsh and erratic melodies, a profusion of synthesized and recorded noises, and deliberately baffling lyrics caught the attention of Polydoor records. The band dubbed itself Pere Ubu, a name extracted from a notable turn-of-the-century absurdist play by Alfred Jarry. In 1978, Polydoor created a subsidiary, Blank Records, and released the band's first LP, "The Modern Dance."

The strength of the group is its ability to take pop music ideas and cruelly torment them to the point of sonic despair. The fragile

balance of humor, skill, and creativity was difficult to retain, however, as the group underwent a series of personnel changes. The loss of Tom Hermann in 1979 was the de facto end of the original Ubu, with the official end coming in 1982.

The core of the group, singer David Thomas and synthesist Allen Ravenstine, went on to record half a dozen solo albums together, most of which are as imaginative as all but the first Ubu LP.

When the Pedestrians (David Thomas' first backing group) broke up in 1984 and reformed as the Wooden Birds with bassist Tony Maimone (an original Ubu member), their sound began growing closer to that of Pere Ubu. When Scott Krauss (drum kit) rejoined the band last summer, they decided to call themselves Pere Ubu again and tour the East coast. The tour was so successful, that in September they recorded "The Tenement Year," the first Ubu LP since 1981.

Although this group has had a

See GROUP, page 5

## When You Can't Get Out...



**We Can!!!  
We Deliver**

**SOS STREET SUBS**

**2 FREE DRINKS**

w/ANY SIZE SANDWICH

541-0955

(Limit: one coupon per person)

**SOS STREET SUBS**

**50¢ OFF**

ANY SIZE SANDWICH

541-0955

(Limit: one coupon per person)

Expires 10/7/88

Expires 10/7/88





Cry on Cue duo of Bernie Larsen (right, on guitar) and Ian MacLagan (left, in shadows) will grace D.K.'s Friday night.

## Unexpected duo 'cries' reggae

By Stewart McKenzie, staff writer

There once was a child actor named Tommy Nolan, back in the Day-Glo world of the 1950s, who was a director's dream. On demand, Tommy could pour forth a torrent of tears.

Tommy doesn't cry much anymore, much less act, and he's probably never heard of Cry on Cue. That's OK — they've never heard of him, either. It's just a nice name that guitarist Bernie Larsen thought up, according to keyboardist Ian MacLagan. Currently they are shedding tears of joy as the group is promoting their EP *Rhythm of Life* Friday at D.K.'s West Indies Bar, to be opened by New York natives, The Beautiful. The five-member headliner group of Americans and Englishmen blend a mix of reggae and R&B that has pleased music circles of each genre. The key word is that it's danceable. Very danceable.

Larsen, known for his work with David Lindley, was introduced to MacLagan through rocker Bonnie Raitt. It was magic at first sight: "I thought he was a friendly dude," confided MacLagan. One thing led to another, ending up in

See CRY ON CUE, page 6

## GROUP

From page 4

remarkable recorded history, it is their live performances which have served to make them heroes of the industrial music scene. David Thomas' stage antics make his singing seem normal as he howls, rambles, and plays various instruments and percussion with his own magical blend of musical anarchy and *Rolling Stone Magazine* once described him as "the funniest man in rock." Unfortunately, the band has scheduled very few West Coast dates, even in the band's heyday. However, patience has its rewards, and the following dates have been scheduled for this year's tour: Sept. 26, San Francisco at The I-Beam (415)668-6006; Sept. 27, John Anson Ford Amphitheater, Hollywood (213)464-2826.

For those who have not heard any Pere Ubu, their first album (*Modern Dance*) and their latest LP, *The Tenement Years*, are the top choices. However, the concerts listed above would undoubtedly serve as the ultimate introduction.

## THEATER

From Spotlight page 1

about even with what I'm paying to rent the Rainbow."

Business has been about medium, Dee said, and he's seen a lot of Rainbow regulars trying out the new place. Now that students have returned, Dee said business should pick up.

"I've done minimal publicity for the Palm," he said. "In light of recent increases in admissions to other theaters like the Festival, Dee says he wants to stay at \$4.50 for as long as he can.

Most of the Palm patrons questioned found out about it from publicity at the Rainbow, and said the price and type of film were the two most important reasons they came.

Dee cited a few benefits the Palm has over the Rainbow.

"We will have a holdover factor from the Rainbow — the Palm can run movies that warrant the popularity but have run out of time at the Rainbow," he said. "San Luis Obispo is a last-minute town, so that should go over well."

Another advantage of the Palm, Dee said, is that there will be no set schedule, "at least for the time-being. That will give us the luxury of getting rid of a film that dies in the first week without having to run it until the scheduled date."

Dee said the Palm also has butter for its popcorn, while the Rainbow's paper bags prevent such a luxury.

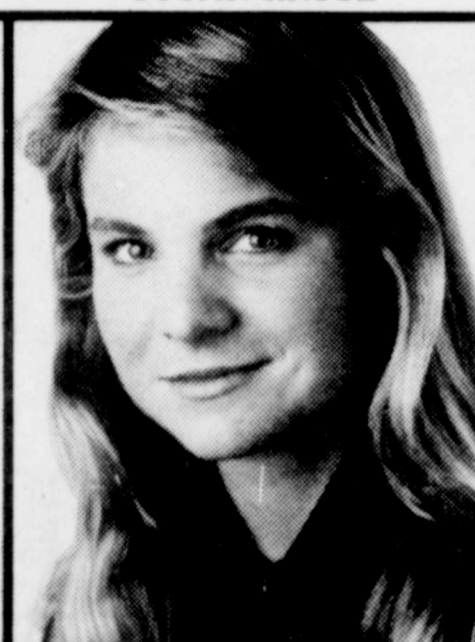
CARLOS SOSA



GRANT JONES



SUSAN KRUSE



HOLLY A. VAN DEURSEN



### MIT, Structural Engineering.

Analyzing and designing bridges. Developed working model of a double spandrel arch bridge. The HP-28S helps him analyze structural stress and geometry. It's the only calculator that lets him do both symbolic algebra and calculus. It features

powerful matrix math and graphics capabilities. And HP Solve lets him solve custom formulas without programming. With more than 1500 functions, 32K RAM and both RPN and algebraic entry, the HP-28S is the ultimate scientific calculator.

### University of Virginia, Finance.

Studies fluctuating stock and money market trends. Assisted head trader in Yen at Chicago Mercantile Exchange. The HP-12C with RPN lets him analyze prices, ratios, net present value and internal rate of return. He can even create his own custom programs. The HP-12C is the established standard in financial calculators.

### UC Santa Cruz, Marine Biology.

Studies behavior of blue whales and effect of environment on distribution of marine mammals. The new, easy to use HP-22S has a built-in equation library with solver, giving her access to the most commonly used scientific equations. Statistics with linear regression. And algebraic entry. The ideal student science calculator.

### University of Michigan, MBA candidate.

Assisted on pricing projects for GM. The HP-17B offers easy algebraic entry. Plus time value of money, cash flows and linear regression to analyze budgets and forecasts. HP Solve lets her enter her own formulas and solve for any variable. Hewlett-Packard's calculators are built for your success. Look for them at your campus bookstore. Or call 1-800-752-0900, Ext. 658E, for your nearest dealer. We never stop asking "What if..."

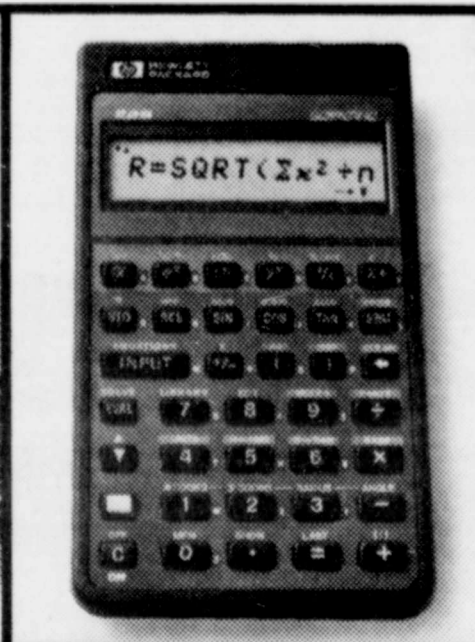
**hp HEWLETT PACKARD**



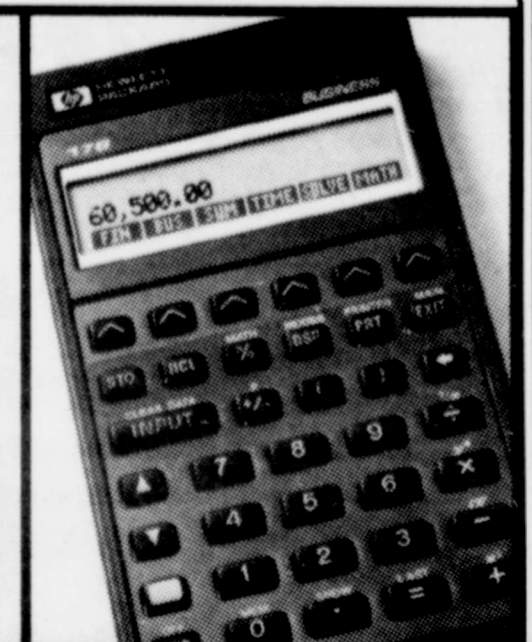
HP-28S SCIENTIFIC CALCULATOR



HP-12C FINANCIAL CALCULATOR



HP-22S SCIENTIFIC CALCULATOR



HP-17B BUSINESS CALCULATOR

## New Achievers in Heavy Metal, Swing, Blues and Motown.



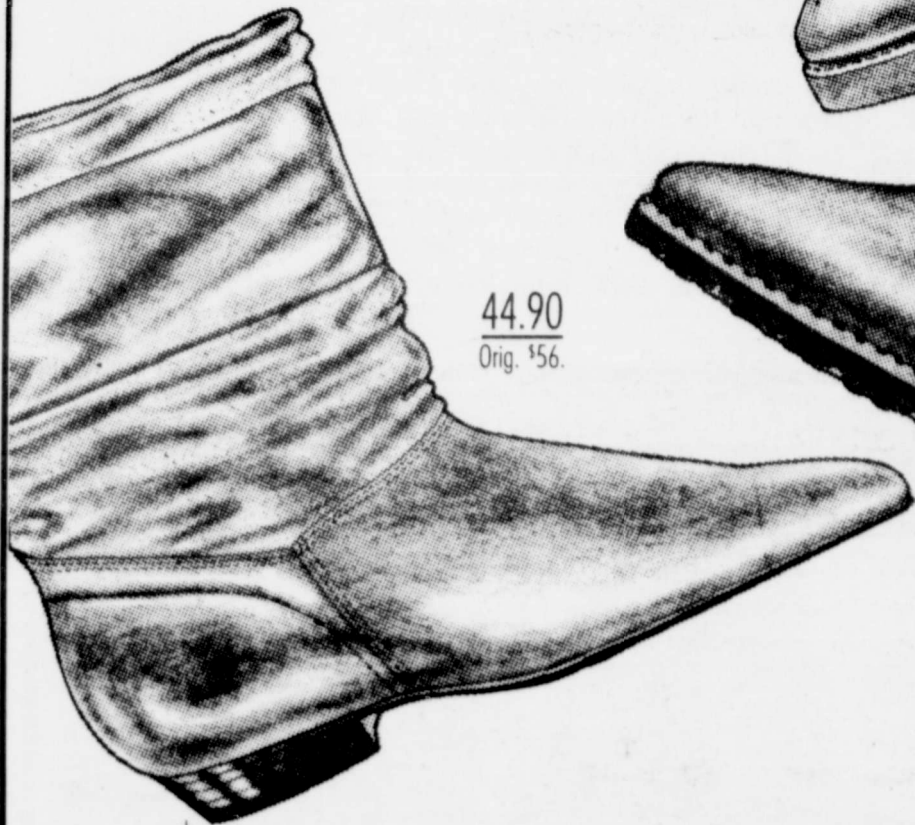
fashion's new  
**SPORTY**  
short boots!

We've got a sensational collection of Fall's best short boots — at great sale prices! The latest lug-soled boots, sporty lace-ups, soft pull-on boots, and more — all in gorgeous leathers and suedes. Come in now — sale prices good for a limited time only!

29.90  
Orig. \$50.



44.90  
Orig. \$56.



39.90  
Orig. \$52.



**GUILD HOUSE** NOW AT **PUT-ONS**  
S N Reg in CA 877 MONTEREY • 543-1915 • SAN LUIS OBISPO

## CRY ON CUE

### From page 5

the studio and their current tour through the West Coast.

Lindley's influence on the band is obvious, and combined with MacLagan's experience with the 1978 to 1981 Rolling Stones tours makes for a great pair. Helping to deliver their sound includes guitarist Todd Sharp, bassist Cliff Hugo (of Ray Charles fame) and Karl Lugman keeping time on the drums.

Though reggae seems to be in creasingly slipping into mainstream music daily, MacLagan insisted it's not a trend.

"The industry doesn't know anything about music. If there's

a trend they've already missed it," said the keyboardist. He cited an example when a music company official asked him in 1979 if reggae would ever become popular.

But talk like that has not discouraged him; it's just made both Cry on Cue principles busier. Larsen has consistently been writing songs as of late, one of them to be featured on David Lindley's next album; MacLagan keeping up responsibilities in two other bands. Said he, "When you're a musician you don't want to be idle."

Just as long as there's time for a good cry.



**Port Subs**  
A UNIQUE SANDWICH EATERY

- 18 EXCITING SUBMARINE SANDWICHES
- HOMEMADE MACARONI & POTATO SALAD

We Deliver!

544-4440

Prado	Margarita	DMV
		3121 S. Higuera St.



**\$1.00**  
per glass



Sept. 22-23 **CHAPTER ONE** Foothill Plaza



**Williams Brothers Markets**

**Welcomes Back Cal Poly**

For all your everyday needs  
come see our giant plant sale  
and basketfull of **HOT** specials!



At our San Luis Obispo stores only:

3550 South Broad St.

1314 Madonna Rd.

896 Foothill Blvd.



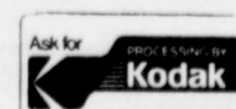
Open 8a.m. to 10p.m., Monday thru Sunday

**"One set of pictures just isn't enough!"**



**Get 2 sets of KODAK Color Prints for the price of 1!**

Order one set of KODAK Color Prints at the regular price and get a second set to share. So hurry! Bring in your film today for quality developing and printing by Kodak. And ask for full details.



Offer good through October 1.

**El Corral Bookstore**



## Theaters blame higher ticket prices on state's increased minimum wage

By Christine C. Temple  
Staff Writer

If you're thinking of taking that special someone out to see Moon Over Parador or have a laugh over A Fish Called Wanda, you may want to consult your checkbook.

Local cinemas have increased their prices and made schedule changes over the summer, forcing even the most avid movie buff to rethink his entertainment plans. The Festival in Arroyo Grande and the Fremont in downtown San Luis Obispo have raised their adult ticket prices from \$5.50 to \$6.

Cal Poly business major Christopher Hyde purchased a \$6 ticket to see "Who Framed Roger Rabbit," and admits he'll go less frequently because of the high prices.

"I'll pay the \$6 if it's something I really want to see," he said. "Otherwise, I'll just wait till it comes out on video." Hyde is a regular moviegoer, but feels

that it's too expensive and he can find more fun things to do for his hard-earned dollar.

Fremont cashier Kathryn Richardson said this reaction is all too common. Customers are angry at the theatres for bumping ticket prices, and employees get the brunt of their complaints.

"People are darn rude," Richardson said. "We don't make the price."

The Mann Theatre chain is the one who sets the ticket price so it can cover the overhead costs and still make a profit. Local managers have defended the price adjustment as a simple matter of economics.

Festival Manager Mark Nelson said the main justification in raising ticket prices is the high turnover of minimum wage employees. Nelson claims that after the minimum wage increased from \$3.35 to \$4.25 in July, his employee payroll jumped \$2,000 a week.

Privately-owned theatres like

Madonna Plaza and Mission have been able to keep ticket prices at \$5.50, but have reduced weekly matinees to only one per day.

Mission Manager Brian Crowell admits that all the movies are doing poorly because of the matinee restructuring. Both the Festival and Mission have been big matinee companies, and will suffer the loss of eight shows.

After analyzing statistics, Nelson says Festival will take a loss for awhile, but he's not sure how it will affect business in the long run term.

"It's a matter of the 'higher-ups' — finding an optimum price that won't scare away viewers, yet enough to clear a profit," Nelson said.

So those of you who were so happy to get back to SLO town to see metropolitan movies at a rural price, you may want to wait for them to hit the shelves of your favorite video store.

## Foreign film series will soon start

A little bit of salsa will spice up San Luis Obispo's movie fare this fall with a different Spanish film being offered every Monday at Cal Poly's Chumash Auditorium.

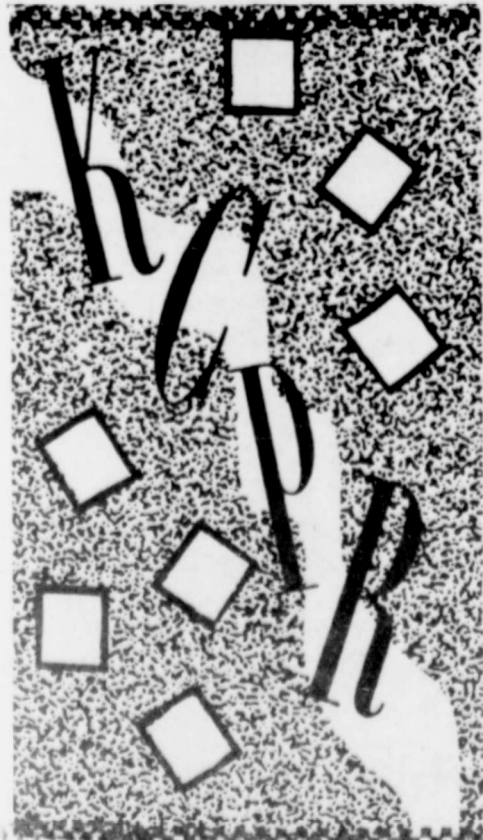
"Spanish Films: The Culture of Spain and South America," includes films from France, Spain, and Peru, and is this quarter's contribution to the Cal Poly Arts Film Series.

This year, the films will not be shown on video, but in 16mm glory every Monday night at 7:30 p.m.

The fiesta will begin with "That Obscure Object of Desire," a 1977 French release directed by Luis Bunuel, on Sept. 26. And will continue with "The Spirit of the Beehive," a 1974 Spanish release about a family in isolation, on Oct. 3.

Tickets will be \$3 for students and \$4 for the public. Series tickets are also available. For the entire selection, students pay \$18 and the public pays \$20, and for a mini series package (five shows), students pay \$12 and the public pays \$14.

A series titled "Women of the World: Films by and about Women" is scheduled for winter quarter, and "The Films of Federico Fellini" is in line for spring.



**NEW & USED  
COMPACT DISCS  
CASSETTES  
and LP's!**

- Blank Tapes
- Accessories
- Periodicals
- Promotional
- Rock & Roll Posters

- Mon.-Thurs. 11-8
- Fri.-Sat. 11-9
- Sun. 12-5

**\$CASH PAID FOR USED:\$**

**1817-B Osos St.  
San Luis Obispo  
543-8164**

**RECORDS  
CASSETTES  
and CD's**

## SIGN UP TO PLAY!



PRESENTED BY GENERAL MOTORS & GMAC FINANCIAL SERVICES

IN ASSOCIATION WITH

CAL POLY SAN LUIS OBISPO  
REC SPORTS

SPORT OR ACTIVITY: Inter Tube Water Polo  
DIVISION(S): C  
SIGN-UP DATE(S): Monday, September 26, 1988  
TIME: 8:00 p.m.  
PLACE: San Luis Lounge

SPORT OR ACTIVITY: Football  
DIVISION(S): M, W, C  
SIGN-UP DATE(S): Monday, September 26, 1988  
TIME: 6:00 p.m.  
PLACE: San Luis Lounge

SPORT OR ACTIVITY: Box Lacrosse  
DIVISION(S): M  
SIGN-UP DATE(S): Monday, September 26, 1988  
TIME: 9:00 p.m.  
PLACE: San Luis Lounge

SPORT OR ACTIVITY: Soccer  
DIVISION(S): M, W, C  
SIGN-UP DATE(S): Monday, September 26, 1988  
TIME: 7:00 p.m.  
PLACE: San Luis Lounge

SPORT OR ACTIVITY: Basketball 3x3  
DIVISION(S): M, W  
SIGN-UP DATE(S): Monday, September 26, 1988  
TIME: 9:00 p.m.  
PLACE: San Luis Lounge

SPORT OR ACTIVITY: Volleyball  
DIVISION(S): M, W, C  
SIGN-UP DATE(S): Monday, September 26, 1988  
TIME: 5:00 p.m.  
PLACE: San Luis Lounge

SPORT OR ACTIVITY: Team Tennis  
DIVISION(S): C  
SIGN-UP DATE(S): Monday, September 26, 1988  
TIME: 7:00 p.m.  
PLACE: San Luis Lounge

General Motors and GMAC Financial Services are proud to be associated with your campus intramural-recreational sports and activities. Stop by your Intramural or Recreational Sports Department today so you can **sign up to play!**



©1988

General Motors... "sharing your future"



# CALENDAR

## sounds

**Andrew Tosh and the Tosh Band** will perform Sunday at 8 p.m. at the Graduate. Tosh is the son of legendary reggae star Peter Tosh. Tickets are \$12.50 in advance and \$14 at the door, and are available at Boo Boo Records and Big Music in San Luis Obispo.

The Darkroom on Monterey Street will feature the **Ya-Yas** tonight, the **Guy Budd Band** Friday night and **Swing Party** Saturday night. Call 543-5131 for details.

**Cry on Cue**, a duo of former Rolling Stones keyboardist **Ian Macglogan** and former David Lindley guitarist **Bernie Larsen**, will appear Friday night at D.K.'s West Indies Bar. On Saturday night, D.K.'s will feature **House of Freaks**, sponsored by Lazy Snail Productions. Tickets for this show are \$5 at the door.

## theater

The San Luis Obispo Little Theatre opens its 1988-89 season Friday with **Company**. Stephen Sondheim's Tony award-winning musical. The show will run Friday and Saturday nights at 8 p.m. until Oct. 15. All performances are at the Hilltop Theatre, 1572C Lizzie St., San Luis Obispo, and tickets are \$9. Call 543-3737 for more information.

**Frankenstein** opens tonight at The Great American Melodrama and Vaudeville in Oceano and will run through Nov. 13. Call 489-2499 for ticket information.

The Cal Poly Theatre and Dance Department is holding auditions for an upcoming production. A second day of tryouts for **The Three Sisters**, opening Nov. 17, will be held tonight from 7 to 11 p.m. in Room 212 of the H.P. Davidson Music Building. Call 756-1465 for more information.

Pacific Repertory Opera will hold auditions for its 1989 season Oct. 4 and 5 from 7:30 to 9 p.m. in Room 130 of the Cal Poly Music Building. Trained singers in soprano, mezzo, tenor and baritone, are needed. Questions? Call Jill Anderson at 543-1738.

## galleries

University Art Gallery will present a display by the **Graphic Design Department** through Oct. 9. The gallery is located on the first floor of the Dexter Building.

**Biomorphic Phantasy**, a series of watercolors by Susan Dunlap, will be on display through Oct. 8 in the University Union Galerie. An artist's reception is set for Saturday from 2 to 4 p.m. in the Galerie, and the public is welcome free of charge.

ARTernatives Gallery in the Central Coast Plaza will exhibit **Anthony Emerton's** "J'ai mis la table" (I set the table) among his other sculpture and drawing combinations beginning Friday through Oct. 30. An artist's reception will be Friday from 7 to 9 p.m. at the Gallery.

The Cuesta College Gallery, located in the



### A Freaky show at D.K.'s

**House of Freaks** will perform Saturday night at D.K.'s West Indies Bar. Singer-guitarist **Johnny Hott** and drummer **Bryan Harvey** comprise the House, and they make more music than most five-

piece bands. Their debut album, *Monkey on a Chain Gang*, has been applauded by *Gentleman's Quarterly*, *Rolling Stone Magazine* and *Billboard*. Local band *Tabula Rasa* will open the show.

campus library, will display selected works of **David Settino Scott**, a Cuesta art instructor, through Sept. 28. The show is part of the annual Art Department Faculty Exhibition.

Seekers Glass Gallery in Cambria features a new collection of sculpture by internationally-known glass artist **Steven Maslach** through the end of September. Seekers is at the corner of Burton and Center in Cambria's East Village. Call 927-4352 for details.

## film

Opening this weekend:

**Deadringer** — This one sounds interesting. A pair of twin gynecologists who share each other's weird thoughts. The ultimate in family entertainment. Festival.

**Festival of Animation** — No less than 16 short films, this is the state of the art in computer animation. Rainbow Theatre.

**Kansas** — Starring Matt Dillon and Andrew McCarthy as two brothers on the run. Festival.

**Nightfall** — An Isaac Asimov sci-fi. Festival.

**Patty Hearst** — The long-awaited, true story of the newspaper heiress who was kidnapped and brainwashed by the SLA in the early '70s. Festival Cinemas.

**Spellbinder** — Another award-winning horror flick that features a pentagram and flashing satan headline in its commercial. Festival.

**Sweetheart's Dance** — Forget Sony Crockett. Don Johnson hits the big screen and plays opposite Susan Sarandon in this love story. What a pair. Festival.

### Special Events

**That Obscure Object of Desire** — Showing Monday and is the first of the Cal Poly Arts 16mm Spanish film series, in which a 50-ish gentleman falls in love with a woman half his age. This surreal classic taps into every anxiety regarding relationships a person could imagine. The love scenes are about as excruciating as the paranoia felt by the characters caused by invisible terrorists everywhere. Director Luis Bunuel uses two different actresses to portray the multifaceted character of one woman. English subtitles. Chumash Auditorium.

### Now playing:

**A Fish Called Wanda** — Python's John Cleese is brilliant in this fishy folktale of frivolity at the Fremont. (Look out! It's K-k-ken c-c-coming to k-k-kill me!)

**Betrayed** — A nice little racial slaying flick, with Tom Berenger and Debra Winger. Undercover FBI agent Deb falls for racial slayer Tom, swearing he's innocent. Mission.

**Big Business** — This has been around forever, but Lily Tomlin and Bette Midler stir a few laughs as two sets of twins who got mixed up at birth. Mission.

**Cocktail** — Tom Cruise can serve me a good stiff drink anyday. Mission and Festival.

**Diehard** — Bruce Willis gives a great, white-knuckle performance in this hostage thriller. And he wears a tank top throughout. Festival.

**Married to the Mob** — Michele Pfeiffer is fed up with her mobbish hubby. Madonna.

**Messenger of Death** — Another Charles Bronson beat 'em up, kick 'em around flick. Festival.

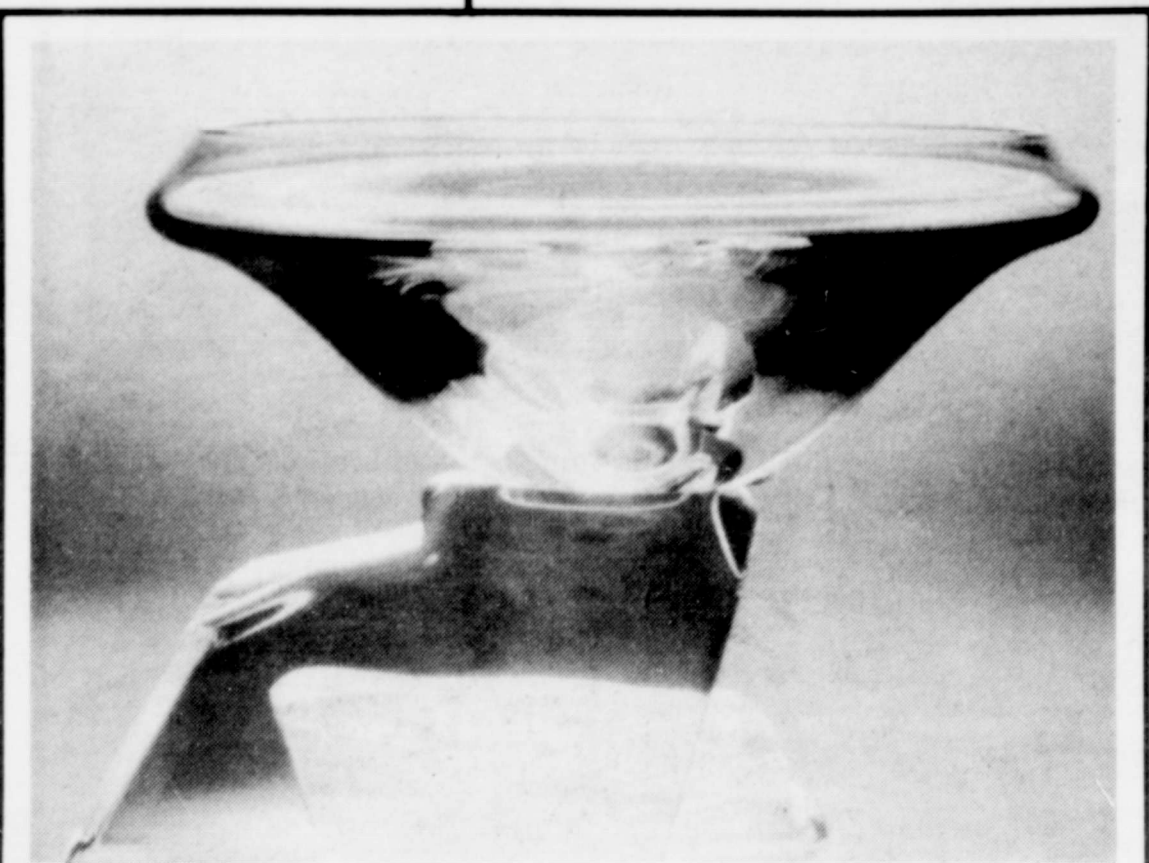
**Moon Over Parador** — Richard Dreyfuss plays an actor who plays a dictator in this surprising comedy. Raul Julia and Sonia Braga of *Kiss of the Spider Woman* fame co-star. Madonna.

**Nightmare on Elm Street Part IV** — The nightmare is that it even has to be listed. Madonna.

**Tucker** — Jeff Bridges stars as the automobile entrepreneur with foresight. Oooh — Disc brakes. Madonna Theatre.

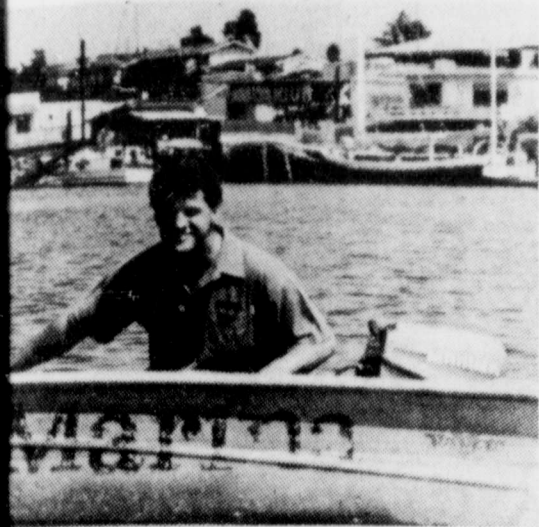
**Young Guns** — A brat pack western with Emilio Esteves (as Billy the Kid), Charlie Sheen, Kiefer Sutherland and Lou Diamond Phillips. Mission and Festival.

*Typed submissions to Spotlight Calendar must be received by Tuesday noon for Thursday publication. Send info to Mustang Daily c/o Spotlight, San Luis Obispo, CA 93407.*

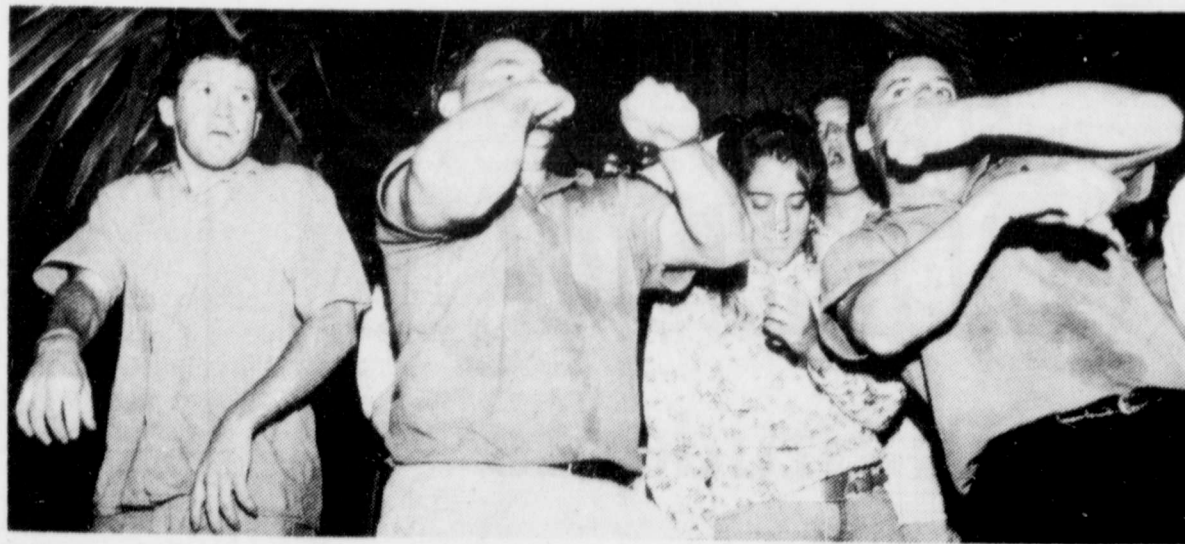


"Fractured Dichroic Bowl" is one of Steven Maslach's glass sculptures featured at Cambria's Seekers Gallery until the end of the month. Prices of the northern California artist's works range from \$10 to \$2,800. His works have been exhibited at the White House and at museums world wide.





88,



# ROAD SCHOLAR



**SUPERSPORT™**

Dual 3.5" 720K  
Floppy Drive Model  
Suggested Retail Price:  
Special Student Price:  
20MB Hard Disk Model  
Suggested Retail Price:  
Special Student Price:

**ZENITH INNOVATES AGAIN — WITH THE NEW BATTERY-DRIVEN SUPERSPORT™ — TO TAKE YOU FROM COLLEGE TO CAREER.**

Small, lightweight, flexible and economical. Ideal for spreadsheets, word processing and more. That's the new SupersPort from Zenith Data Systems — today's leader in battery-operated portables.

**FLEXIBLE COURSE SCHEDULE.** Whatever your agenda, the SupersPort's modular configuration easily adapts to your computing style. With a detachable battery for easier portability. An AC adapter/recharger that plugs into any outlet. MS-DOS® to run virtually all PC/XT compatible software. And 640K RAM — expandable to 1.64MB with EMS. Plus the SupersPort comes in your choice of dual 3.5" 720K floppy drive or 20MB hard disk models. For flexible desktop performance anywhere on campus.

**CARRY SOME GREAT HOURS THIS TERM.** Hours of battery power, that is. For greater productivity everywhere your studies take you. Thanks to Zenith's comprehensive *Intelligent Power Management* — a system that lets you control how your battery power is consumed. So you won't waste valuable energy on components and peripherals not in use.

**EASY COLLEGE READING.** The easiest. After all, the SupersPort features Zenith's renowned dazzling backlit *Supertwist* LCD screen for crisp text and superior readability. And its CRT-size display is one-third larger than most competing portables for enhanced viewing. The screen even tilts back 180-degrees so it lies flat to accommodate a desktop monitor.

**TO CATCH THE NEW SUPERSPORT PORTABLE PC AT A SPECIAL STUDENT PRICE, VISIT YOUR ZENITH DATA SYSTEMS CAMPUS CONTACT TODAY:**

SAVE \$\$  
**\$2,359-**

El Corral Bookstore  
Computer Department: 756-5311

**ZENITH data systems**

THE QUALITY GOES IN BEFORE THE NAME GOES ON™

PC/XT is a registered trademark of IBM Corp. MS-DOS is a registered trademark of Microsoft Corp. Special pricing offer good only on purchases directly through Zenith Contact(s) listed above by students, faculty and staff for their own use. No other discounts apply. Limit one portable personal computer per individual in any 12-month period. Prices subject to change without notice.  
© 1988, Zenith Data Systems

Form No. 1392

Who  
ling and Jack Wyse of  
Sanwo move across the  
Parmelee anticipates her  
a midnight dip in the hot  
Mineral Springs and  
to a tug-of-war.







# This OLD HOUSE

## Welcome Back Students

We feature the best steaks & ribs  
cooked over oak in town!

Hours: M-TH 5:30-9:30  
F 5:30-10:00  
Sa 5:00-10:00  
Su 5:00-9:30



2 miles Foothill Blvd

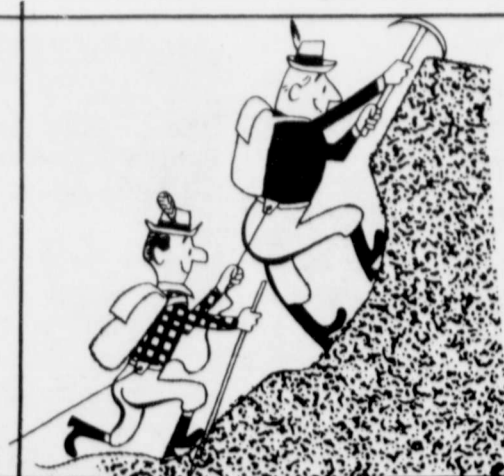
CAL  
POLY

Santa Rosa

Come on out & see for yourselves!  
Bring your appetite & this coupon  
and get...

**10% off**  
your entire dinner  
(excluding cocktails)

740 W. Foothill We Take Reservations 543-2690



REACH  
THE

**P**

### THE MUSTANG TAVERN

1347 Monterey, San Luis Obispo

Specials...

**WED. & FRI...** 25¢ mugs/\$1.75 pitchers

**SATURDAY...** \$1.00 CORONA

\$2.00 PITCHERS

\*6 Pool Tables ALL The Time\*

## FREE PRE-GAME BACKYARD BARBEQUE!!

**SATURDAY, SEPT 24TH**

**977 PASATIEMPO**

(off Foothill & Patricia)

Swimming : 3:00 pm

BBQ dinner : 5:00 pm

(sponsored by College Ministry  
of First Presbyterian Church.)

## Hewlett-Packard Week at CAL POLY

**Tuesday, October 18**

**INTERVIEW ORIENTATIONS** - only for people who will be interviewing on campus.

**4 - 6 p.m.** for those interviewing on Wednesday. Staff Dining Room.

**7 - 9 p.m.** for those interviewing on Thursday. Staff Dining Room.

**Wednesday, October 19**

**INTERVIEWS** - for December and February Grads in EL, ME, CSC, CPE, MATH/CSC, MIS, ET/EL, MSENG, MSCSC. CO-OP: Juniors in CSC, ME, EL, MIS, CPE.

**Thursday, October 20**

**INTERVIEWS** - for December and February Grads in EL, ME, CSC, CPE, MATH/CSC, MIS, ET/EL, MSENG, MSCSC. CO-OP: Juniors in CSC, ME, EL, MIS, CPE.

Contact the Placement Center for full-time interviews  
and the CO-OP office for CO-OP interviews.

Hewlett-Packard Company is an Equal Opportunity/Affirmative Action Employer.



**HEWLETT  
PACKARD**



## CAPTURE

### From page 1

potential major problem," said Lauster. She estimated the number of out-of-town calls to CAPTURE was triple the normal load last Monday.

Although Lauster said a Cal Poly spokesperson assured her phone calls would be staggered for add/drop activity next quarter, Cal Poly Registrar Gerald PUNCHES said a priority for add/drop this winter quarter is unnecessary.

Wally Mark, director of institutional studies said, "The view is there is no need for a separate add/drop time." He said that because of time limitations for add/drop, a priority would not have significantly lessened phone activity fall quarter.

If there had been more time, phone calls may have been staggered, said Mark.

He said the number of new students is so great that if they had only been given a few days

to call (with a priority system), many would never have achieved access to CAPTURE.

"We are aware of the problems with accessing the computer and it is unfortunate," said Mark. During winter quarter, Mark said there would not be a true add/drop period. He said it will be more like a continuous registration because CAPTURE will be processing calls from the beginning of registration to the end of add/drop.

Mark said students will use their assigned priority the first time they register and said he believes they will be able to register for the necessary classes without adding and dropping later. He hopes that CAPTURE will be activated for about two months continuously. For this reason he does not expect CAPTURE to be flooded with calls over a brief time period.

Mark said local phone system "trunks," which long distance phone calls must go through, were not designed to handle the

heavy call load generated the system. According to Mark this was one of the reasons students calling long distance could not reach CAPTURE.

Mark said the use of the redial button on touch-tone phones has contributed to jammed phone lines. "One phone (with a redial function) generates several hundred calls an hour," Mark said. He believes the speed of the redial function may kick students out of CAPTURE rather than helping them get through.

Students calling long distance were not the only ones to hear a multitude of busy signals. Four roommates sharing a residence in San Luis Obispo, who requested anonymity, spent three days calling frequently from a local phone before hearing the joyous sound of CAPTURE's script: "Welcome."

Stan Bernstein, Cal Poly's director of public affairs, said on Sunday, Sept. 18 CAPTURE processed 4,880 student calls. On the first day of classes, Sept. 19,

CAPTURE helped students alter 4,636 schedules. As of midnight on Monday, Bernstein said a total of 28,654 student calls were processed by CAPTURE.

The hours remaining for add/drop are as follows: Today and tomorrow CAPTURE will be available from 7 a.m. to 7 p.m. Saturday the system will be shut down to allow staff to begin upgrading the system for winter quarter, as well as performing routine maintenance tasks.

On Sunday Sept. 25, CAP-

TURE will be available from 8 a.m. to 5 p.m. The following week from Monday Sept. 26 until Friday Sept. 30, CAPTURE will be in use from 7 a.m. to 7 p.m. Friday is the last day for students to drop a class.


On Saturday Oct. 1, CAPTURE will again be closed to students for maintenance and upgrading. Monday Oct. 3 is the last day to add a class and CAPTURE will be activated from 7 a.m. to 7 p.m.

## Calendar

### Friday

•Alcoholics Anonymous meetings will be held in the Health Center every Friday (except holidays) from 11 a.m. to 12 p.m. in room 12. For further information call the Health Center at 1211.





**MAYA**  
RESTAURANT - CANTINA

**We dare you  
to try our 60 oz.  
MARGARITAS!**

Open 7 days  
a week  
7:00 am - 10:00 pm

1761 Monterey St., SLO 543-8835

## GOLDEN GATE UNIVERSITY SCHOOL OF LAW IS ACCEPTING APPLICATIONS FOR JANUARY ADMISSION

- Begin as a part-time day or evening student with option to become a full-time student in autumn, 1989
- Application Deadline: November 14, 1988
- Applicants must take the LSAT no later than October 1, 1988

FOR INFORMATION/COUNSELING  
PHONE (415) 442-7255

*Excellence in Legal Education  
Since 1901*



*The last thing  
you want to worry about is **MONEY!***

## VISION BANKING

**A**t Ventura County National Bank (VCNB) we share your vision for the future.

When you've explored all the funding options available to you—the scholarships and grants and special programs—you may find a student loan is the quickest, surest way to meet the high cost of higher education.

And because VCNB makes more student loans than many of the nation's largest banks, we appreciate your need for knowledgeable, fast, uncomplicated assistance.

See your Financial Aid Administrator to determine your eligibility. Once we receive your completed application, we guarantee you will get your funds without delay. Our turnaround time is only three to five working days, and you can call us around the clock on our 800 number.

Contact us today for a brochure outlining VCNB's various student loan options.

Student Loan Center: (800) 445-VCNB ☐ Twenty-four hours a day

Or at (805) 484-8588 from 8:30 a.m. to 5:30 p.m. Monday through Friday ☐ P.O. Box 5246 Oxnard, CA 93031

# Ventura County National Bank



Member FDIC Equal Opportunity, Affirmative Action Lender



**ONE DAY ONLY!**  
**THURSDAY, SEPT 22ND**  
**10 AM - 11 PM**  
**-EXTRA-**

**20% OFF**

\* Mall Hours: 10 AM to 9 PM



**EVERYTHING IN STOCK!**  
**NOTHING HELD BACK!**

**TAKE 20% OFF**  
**CURRENT PRICES**  
**ON ALL REGULAR**  
**PRICED ITEMS!**

**TAKE 20% OFF**  
**SALE PRICES ON**  
**ALL SALE ITEMS!**  
**DURING SALE 2 ITEM PRICING**  
**NOT IN EFFECT.**

**SOME EXAMPLES**

ATHLETIC SHOES			
	ORIGINAL PRICE	CURRENT SALE	EXTRA 20% OFF
Special Group Men's Basketball Shoes	UP TO \$70	34.99	27 <sup>99</sup>
Special Group Men's Athletic Shoes	UP TO \$110	39.99	31 <sup>99</sup>
Special Group Women's Athletic Shoes	UP TO \$50	34.99	27 <sup>99</sup>
Special Group Children's Shoes	UP TO \$30	24.99	19 <sup>99</sup>
New Balance 990 Running	\$100	49.99	39 <sup>99</sup>
All Current Football & Soccer Shoes			<b>EXTRA 20% OFF</b> CURRENT PRICES

CAMPING		
	CURRENT SALE	EXTRA 20% OFF
Kelty 20° Mummy Bag	69.99	55 <sup>99</sup>
Jansport Gateway Tent	119.99	95 <sup>99</sup>
All Jansport Day Packs		<b>EXTRA 20% OFF</b> CURRENT PRICES
All Eastpak Day Packs		<b>EXTRA 20% OFF</b> CURRENT PRICES

TENNIS/GOLF		
	CURRENT SALE	EXTRA 20% OFF
Prince Graphite Pro	124.99	99 <sup>99</sup>
Wilson Kramer Staff	89.99	71 <sup>99</sup>
Palm Springs 5x2 Starter Set	99.99	79 <sup>99</sup>
Titleist X-Out Golf Balls (1 Doz.)	7.99	6 <sup>39</sup>

**ALL NEW FALL ATHLETIC APPAREL & EQUIPMENT**

**EXTRA 20% OFF**  
 CURRENT PRICES

ATHLETIC APPAREL		
	CURRENT SALE	EXTRA 20% OFF
Russell Crew Neck Sweat Shirts	15.00	12 <sup>00</sup>
Russell Sweat Pants	15.00	12 <sup>00</sup>
Russell Fleece Shorts	12.00	9 <sup>60</sup>
Women's Main Event Warmup	19.99	15 <sup>99</sup>
Dolfin Lycra Tights	19.99	15 <sup>99</sup>
Men's Tube Sock 6 Pack	7.99	6 <sup>37</sup>
Kid's Tube Sock 6 Pack	6.99	5 <sup>59</sup>
All Fleece Shorts		<b>EXTRA 20% OFF</b> CURRENT PRICES
All Sunglasses		<b>EXTRA 20% OFF</b> CURRENT PRICES

ATHLETICS		
	CURRENT SALE	EXTRA 20% OFF
Spalding NBA Synthetic Leather Basketball	24.99	19 <sup>99</sup>
Patrick Sewn Soccer Ball	19.99	15 <sup>99</sup>
All Star Shinguard	9.99	7 <sup>99</sup>
Kiwi Zephyr Cycling Helmet	29.99	23 <sup>99</sup>
All Bell Cycling Helmets		<b>EXTRA 20% OFF</b> CURRENT PRICES

EXERCISE		
	CURRENT SALE	EXTRA 20% OFF
Pacific Std. No. 10 Plate	3.90	3 <sup>12</sup>
Pacific International No. 10 Plates	4.90	3 <sup>92</sup>
Excel Brutus I Weight Bench	199.99	159 <sup>99</sup>
All Precor Rowers		<b>EXTRA 20% OFF</b> CURRENT PRICES
All Tunturi Bikes		<b>EXTRA 20% OFF</b> CURRENT PRICES

**SEPT 22 ONLY**

**Copeland's Sports**

962 Monterey  
 San Luis Obispo 543-3663

**MUSTANG DAILY**

756-1143



**kinko's**

**1 HOUR PHOTO**

**Welcome Back Cal Poly!**

*Remember Kinko's Photo for all your film processing needs!*

**E-6 Slide processing**  
**1/2 PRICE!**

1 and 4 hr. service only  
 not valid with any other offers

549-8979  
 San Luis Obispo

Limit 2 rolls  
 per coupon expires 10/12/88

**2 FOR 1**

Bring in any roll of 135, 110, 126 color print film for developing & printing and get a second set free!

Film- 4 hr. processing  
 not valid with any other offers

549-8979  
 San Luis Obispo

Limit 2 rolls  
 per coupon expires 10/12/88

**Achtung!**

**G**erman high-performance engineering. It makes your car worth the investment. But the only way to protect that investment is with a service schedule tailored by experts.

At German Auto we have a great respect for the automobiles we service. They deserve to be maintained by highly-skilled technicians who take pride in their work—German Auto technicians.

So for the most conscientious service this side of the Rhine, you can trust German Auto. Call us today for an appointment because your car can't afford to wait.

**Trust German Auto**

*Specializing in Porsche, Audi, BMW & Volkswagen Automobiles*

273 Pacific Street, San Luis Obispo 543-7473

**ARTISTS! DESIGNERS!**

**ARCHITECTS! ENGINEERS!**

**BRING IN THIS AD AND SAVE**  
**20 % OFF ALL PAPER PADS.**  
**STRATHMORE & MORRILLA PADS INCLUDING:**  
**18 x 24 Newsprint (smooth & rough).**

**OUR ART STORE ALSO CARRIES:**  
**LIQUITEX ACRYLIC PAINTS**  
**ACADEMY WATER COLORS**

**PAINT BRUSHES**

**PRISMACOLOR PENCILS**  
**CHARCOAL PENCILS**

*See our stationery store, next door, for:*  
**DRAFTING & ENGINEERING SUPPLIES.**

*Mills*

FINE ART & GIFTS

495 MORRO BAY BLVD  
 MORRO BAY, CALIFORNIA 93442  
 (805) 772-3540



## Auto prop leads in poll

SAN FRANCISCO (AP) — A Ralph Nader-backed initiative leads among the five auto insurance measures on the November ballot, according to a new California Poll.

The measure, Proposition 103, led "no" votes by 46 percentage points when voters were given only a summary of the measure. The margin of "yes" votes swelled to 62 points when voters were told that consumer groups sponsored it.

The proposition would cut rates on auto and other property and casualty insurance policies 20 percent from November 1987 levels.

It is opposed by insurance companies, which have sponsored Proposition 104, for no-fault insurance.

Proposition 104 trailed by 9 points among voters given a summary of the initiative, and by 22 points among voters who were told it was sponsored by insurance companies.

The telephone poll of 773 voters was conducted September 6 to 13.

Proposition 106, which would limit the amount of attorney's fees and is also sponsored by insurance companies, received a 59 percent backing with the sponsorship not disclosed. The figure dropped to 49 percent when the sponsor was named.

Proposition 100, sponsored by lawyers, would reduced good driver insurance rates. It was backed by 56 percent without the sponsor being named. It received a 54 percent backing when the sponsorship was disclosed.

Proposition 101's rate and compensation limits gave a dead heat.



## GAMES PEOPLE PLAY

Family, Board & Role Playing Games

\*Open Board & Role Playing Games Every Sat & Sun\*

1060 Broad St. San Luis Obispo

546-8447

Paradise Computers Presents Their:

**Grand Opening,  
Back to School,  
Ninth Anniversary,  
10% Off Everything In The Store**

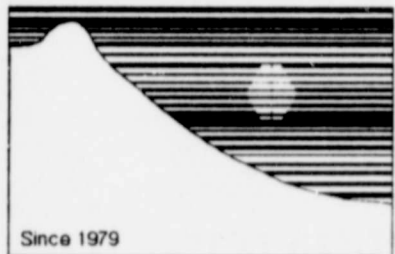
# SALE!

BUT There is a Catch . . . . .

We've Moved, and you've got to find us . . . . .

Call 544-7127 for hints on how to find

# PARADISE



**Paradise  
Computer  
Systems**

Now It's Your Turn to Find Us.

## PAINT YOUR ROOM!

(interior flat latex in white or navajo white)

**\$10.00 BUCKS A GALLON**

also  
save  
20%

on all custom colors  
for indoor or outdoor  
walls or trim

COUPON  
Downtown Only  
expires 10/15/88

**SAVE 20% ON**

**BATHROOM Hardware**

(towel bars, soap holders, etc.)

**KITCHEN Hardware**

(pots, pans, and utensils)

COUPON  
Downtown Only  
expires 10/15/88

4 foot tall and lush

**INDOOR  
ARECA PALMS**

only \$14.88 or 2 for \$25.99

up to 1/2 OFF! reg \$25.99 each  
expires 10/15/88

COUPON  
Both Stores

**Hometown Hardware  
& Nursery.**  
San Luis Obispo

3071 S. Higuera  
South of Madonna Rd.  
SLO  
544-1937

560 Higuera  
Downtown  
SLO  
544-1976

*Finest Pizza on the Central Coast*

**Nardonnese**  
pizzeria

# WE DELIVER

• **PIZZA** (12" - 14" - 16")

Toppings Include:

- artichokes • mushrooms • olives
- onions • bell peppers • pineapple
- Italian ham • pepperoni • sausage
- linguica • anchovies

• **SALADS**

green, spinach, and pasta

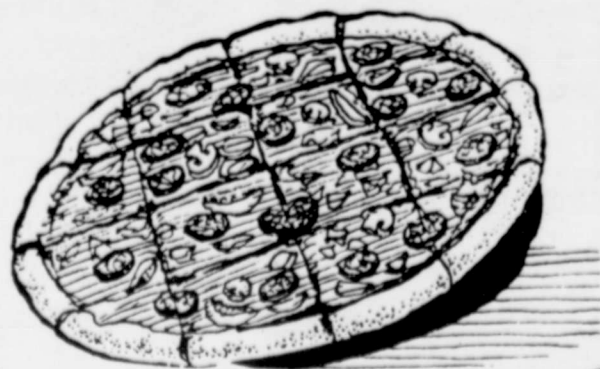
• **Hot Italian  
Sandwiches**

• **Beer, Wine,  
Soft Drinks**

HOURS: Tues.-Thurs. 11:30-9:00.  
Fri.-Sat. 11:30-10:00. Sun. 4:00-9:00.  
Closed Monday.

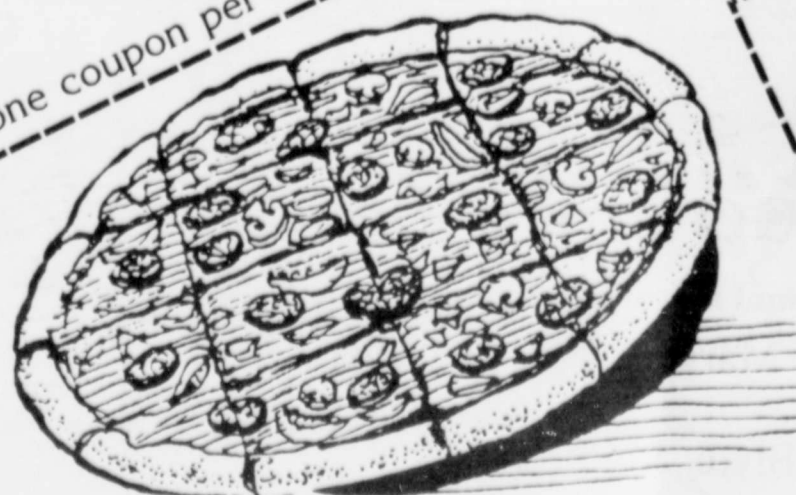
2318 Broad Street  
San Luis Obispo

**549-9392**



**\$2.00  
OFF  
Any Large Pizza**

with coupon  
one coupon per customer



**Nardonnese**  
pizzeria

549-9392  
Expires Oct. 31, 1988

2318 Broad St., SLO

**Nardonnese**  
pizzeria

549-9392  
Expires Oct. 31, 1988

2318 Broad St., SLO

**\$1.00  
OFF  
Any Small or  
Medium Pizza**

with coupon  
one coupon per customer



# THE GREENROOM

## JAZZ BAND AND GRILL



We are pleased to announce that we've found a home, it's a New York style Off-Broadway setting located at:

1135 Morro Street  
San Luis Obispo  
(Corner of Morro & Marsh)  
544-7500



open daily from 11 to 11 Saturday Night Live Music 8 - 11  
Come join us for good Eating, Entertainment & Togetherness!  
Let Us Entertain You

**"BEEP  
BEEP  
BEEP  
BEEP  
BEEP  
BEEP"**



ATM-Checking comes with its own specially designed checks at the same low price as Wells Fargo's popular Stagecoach Checks.

## THE ATM-CHECKING™ ACCOUNT FOR STUDENTS.

Only for ATM users.  
Only \$3.50 a month.  
Only at Wells Fargo Bank.

Now Wells Fargo comes through with a checking account that's perfect for students.

The ATM-Checking Account gives you round-the-clock access to your money at over 1200 Express Stop® ATMs and over 5000 STAR® SYSTEM ATMs throughout the West. And you'll get even more convenience with our exclusive 24-hour person-to-person service.

All this and unlimited checkwriting with no per-check charges. And no minimum balance to maintain.

### Free for the summer!

As a student, your ATM-Checking Account will also be free of monthly service charges on your June, July and August monthly statements. And you can continue to use the ATM and write all the checks you need, all summer long.

Why look anywhere else? Open an ATM-Checking Account today. Only at Wells Fargo Bank.

### Wells Fargo's policy on South Africa.

Wells Fargo has no loans in South Africa and has no offices, investments or facilities there. Wells Fargo's policy is not to make any loans to the government of South Africa or to any businesses based in South Africa.

## WELLS FARGO BANK

The Wells Fargo ATM-Checking Account is available exclusively at:

SAN LUIS OBISPO: 665 Marsh Street, 546-5004

FOOTHILL: 1001 Foothill Blvd., 544-8300

## FUENTES

### From page 1

rampant drug trade, northern migration and a military mentality all to ready to fill any "imaginary political vacuum."

"Political and economic crisis only hamper the vigor of cultural life and cultural continuity," Fuentes said. Yet Fuentes suggested that crisis has conversely shown the presence of developing civil society and cultural strength.

"Latin America can no longer live off the nostalgia of underdevelopment," he said.

In a question and answer period following the lecture, Fuentes endorsed a European-styled social democratic government to spur development. An American two-party system is "quite alien to us," Fuentes said, adding that it presents too narrow of a political spectrum. A government must "assure that the state takes care of social issues and care for social needs," beyond what is offered by

Ronald Reagan and Margaret Thatcher, he said.

The strong political bent of Fuentes' lecture demonstrates the importance and influence of Latin American intellectuals in that society. In addition to writing numerous novels and essays, Fuentes, 59, has served as press secretary for the head of Mexico's Department of Cultural Relations, as Mexican Ambassador to France until 1977 and as head of the Mexican delegation to the North/South Conference on International Economic Development in 1976.

When asked why intellectuals play such an important political role in Latin America, Fuentes responded, "Writers are elected in silence to vote for those without a voice."

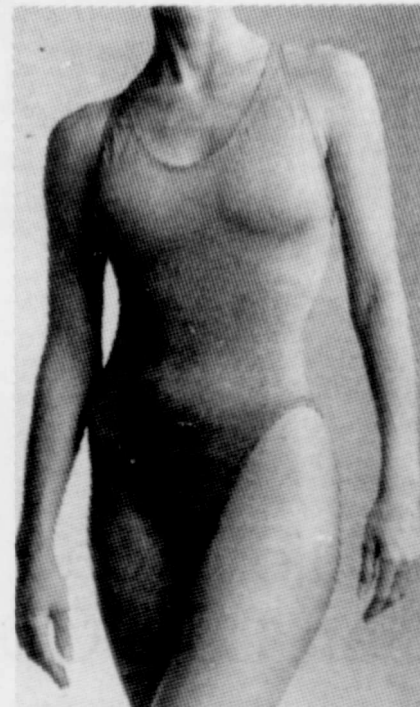
Like America's founding fathers, Latin American intellectuals and artists envision political utopias. Yet unlike modern America, these utopian dreams have only been met with ruin and defeat, he said.

As Latin American civil societies begin to function effectively, Fuentes said writers will decrease in political influence, which he would welcome.

"Writers could assume a position as a citizen, not a guru," he said, explaining writers will be better as a part of society rather than as prophets.



Dream the  
impossible  
dream.



Learn how you can lose pounds and inches in all the right places, not by starving your body, but by eating the right foods. At Diet Center, you could become the slimmer, happier person you've always dreamed you could be. Call today for a free consultation.

**Diet** DIET CENTER  
**Center**®  
The weight loss professionals.

**541-DIET**  
**1504 Marsh, SLO**

serving all of SLO county  
Arroyo Grande  
Atascadero  
Morro Bay

© 1988 Diet Center, Inc. Weight loss comes with each individual.



# SPORTS

Mustangs win 11 straight

## Cal Poly spikers ride out persistent Waves at home

By Terry Lightfoot  
Sports Editor

The Cal Poly Lady Mustangs extended their winning streak to 11 games Monday with a come-from-behind victory over Pepperdine.

Before the game Coach Wilton wasn't sure if the streak was the Lady Mustang's best start but he did say that it was only two shy of the record of 13 straight wins. Poly will get the chance to match that record at the friendly confines of home this weekend.

The Lady Mustangs, playing at home for the first time this year, were greeted by a gym full of enthusiastic fans Monday.

Head Coach Mike Wilton said that the crowd was great but that it may have affected the Mustangs more adversely than Pepperdine. Wilton said, "The girls have been anxious to get home and I think they were a little nervous."

The crowd was cheering and loud on almost every play. On Poly scores the throngs of fans rattled the bleachers with foot stomping pandemonium.

Nervous or not Cal Poly kept Pepperdine at arms length throughout the first game.

The Waves stayed close, tying the score at 9-9, but that would be about it as the Mustangs gave up only one more point winning 15-10.

Before the game Wilton said that Cal Poly showed a lack of composure at certain times.

That was evident as Pepperdine breezed to a 15-3 victory in the second game.

The teams swapped the next two games forcing a fifth and final game.

Pepperdine jumped out to an early 3-0 lead, but Poly responded quickly to tie the score at three all.

Poly only scored three more points as the Waves took control of the game and led 12-6.

Down but not out the Mustangs hung tough through several side-outs and then made their move.

Cal Poly worked back into the game by scoring five straight points making the score 11-12, before a Pepperdine timeout.

Cal Poly tied the score on the

next serve and went on to put the Waves away with three straight points winning the game and match 15-12.

Coach Wilton was pleased with the win as he shook his hands high above his head several times in celebration.

Wilton said that Jessica Bennett and Kim Kaaia were instrumental in the victory. Kaaia, a freshman from Hawaii, did a great job running the Mustang's offense, Wilton said.

In overall team stats errors stand out the most. The Mustangs committed 28 while Pepperdine committed 40.

Individually, Michelle Hansen and Kerry House led Poly in kills with 19 and 13 respectively.

The win not only keeps the winning streak alive but allows Cal Poly to go into very difficult conference play this weekend against UC Irvine and Long Beach State on a positive note.

Wilton said excitedly, "The preseason is over and now it's time for the real thing."

The matches this weekend will be played at 7:30 p.m. in Robert A. Mott Gym.



Freshman Kim Kaaia led Poly's offense to 3-2 victory

Darrell Miho

### QUESTA FOOD CO-OPERATIVE



A Full Line Natural Food Cooperative

Owned and operated by the members... The Lowest prices in the county.

**10% OFF ANY PURCHASE**

Off Broad Street just behind the Circle K Market.  
745 Francis Street  
San Luis Obispo

544-7928

## Mustangs supporters break bank

By Yumi Sera  
Staff Writer

Mustang Boosters raised \$75,000 in athletic scholarships for the 1988-89 school year with the support of San Luis Obispo area businesspeople and sports fans.

"It's the best fund drive we've had locally in the past few years," said James L. Strom, vice-president for university relations.

The Mustang Boosters organization operates in one of 17 geographical districts in the statewide SUMAT (Supporters of Mustang Athletic Teams) program. Each district conducts fund-raising endeavors and activities, allowing alumni to support Cal Poly athletics at a local level.

"The Boosters allow us to sustain an on-going scholarship program," said Ken Walker, athletics director. "We count on the Boosters each year. It would be very difficult to maintain our program without their help."

All the money raised will be turned over to the university and awarded by the student financial aid office, Strom said.

The money was added to the general athletic scholarship account and divided between all the various sport teams, Walker said. Football received the largest percentage of funds for scholarships.

"The main reason for my participation is that the funds we raise are 100 percent hard dollars, and every penny goes to the athletes through the scholarship program," said fund drive chairman Evelyn Delmartini, adding, "the club takes nothing out of the dollars raised."

The overhead for the program  
See BOOSTERS, back page

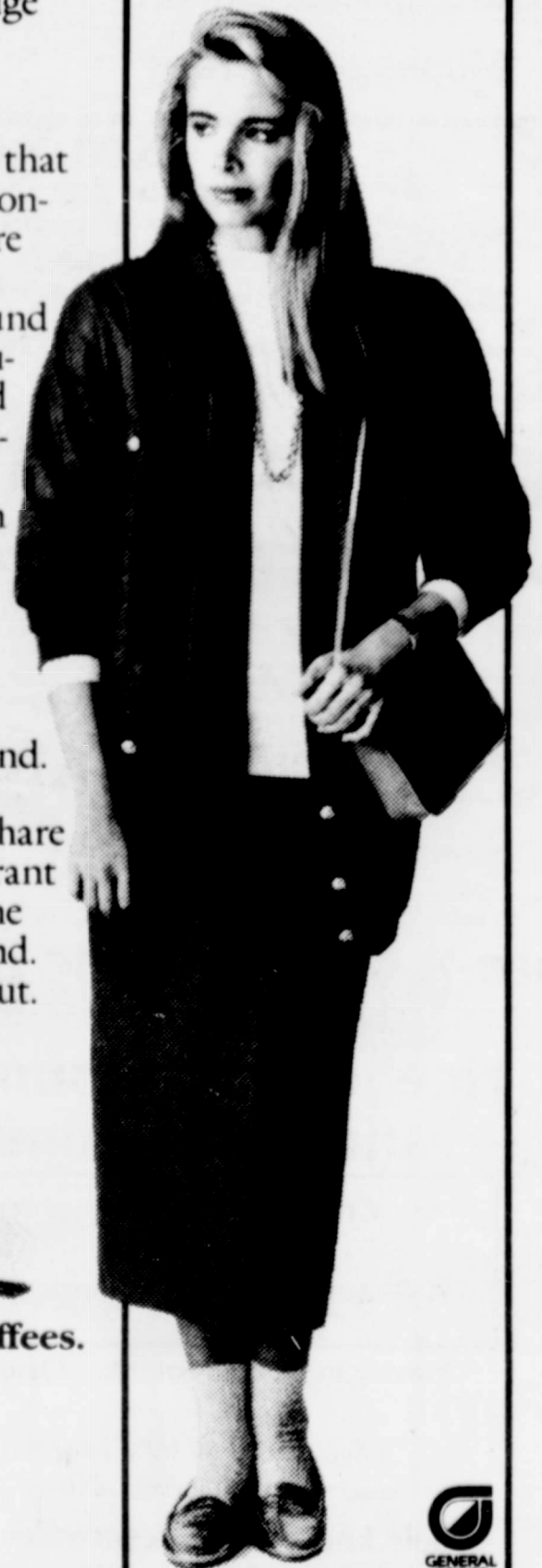
## A101 Freshman Orientation

Nothing could have prepared me for the first few moments with my roommate. "Anique"—nothing more, just "Anique"—was her name. Change the "A" to a "U" and you've got a description.

When they asked what type of roommate I wanted, I didn't know that I needed to be more specific than non-smoker. I could swear I saw a picture of Anique on a postcard I got from London. Within five minutes, I found out that she was an Art History student, into the Psychedelic Furs, and totally, totally against the domestication of animals.

I was just about ready to put in for a room transfer when she reached into her leather backpack, pulled out a can of Suisse Mocha and offered me a cup. Okay, I decided I'd keep an open mind.

As we sipped our cups, I found out that Anique and I share the same fondness for Cary Grant movies, the same disdain for wine coolers, and the same ex-boyfriend. That gave us plenty to talk about.




General Foods® International Coffees.  
Share the feeling.




© 1986 General Foods Corp.





# ZEKE'S WHARF FISH & CHIPS

After 15 years in Morro Bay . . .  
**NOW IN SAN LUIS OBISPO  
 & SERVING BREAKFAST**  
 7 Days a Week from 8 am to Noon  
 Corner of Broad & Higuera  
**"Here or To Go"**  
**546-9066**



## ZEKE'S WHARF

# \$

**BACK TO SCHOOL SPECIAL** expires 10/10/88  
**\$1.00 OFF** Small Fish n' Chips or Zeke Burger

# Sycamore MINERAL SPRINGS



Hot-tubbing by the hour  
 Motel accommodations...each with a private spa on balcony  
 Massage therapy

**coupon**  
**\$5.00 OFF**  
**any hot tub for two**  
 (w/coupon)  
 Not Valid Saturdays & Holidays  
 1215 Avila Beach Dr. SLO.  
 expires 10/14/88

# all that glitters

A Unique Jewelry Store  
 Proudly Announces Our  
**Annual ANNIVERSARY SALE**

## Once-A-Year Genuine Discounts

on our entire inventory of  
**Fine Jewelry, Mountings  
 and Loose Stones!**

**Come In and Register to  
 WIN  
 A Beautiful Ladies Diamond Ring**  
 Valued at over \$1,000.00

Drawing to be held Saturday, October 1st

Layaway Now for Christmas!  
 — Financing Available —

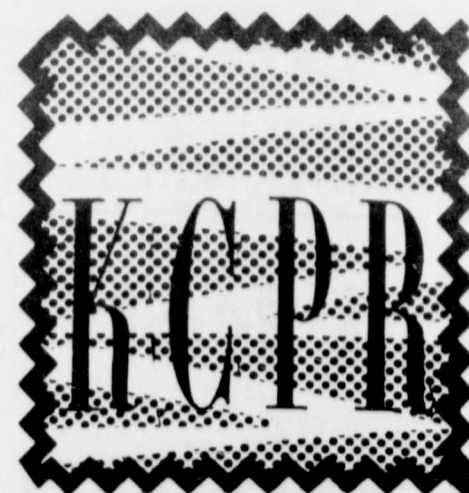
**Sale Ends Friday, September 30th**  
**Madonna Road Plaza - San Luis Obispo**  
**544-GEMS (4367)**



## KIMHASHI

Japanese Take-out Restaurant  
**543-3476**  
 973 Foothill Blvd.,  
 Suite #5 SLO  
 (Next to Burger King)

**Coupon**  
**LUNCH SPECIAL FOR 2**  
**\$6.99**  
 includes: Rice, Eggroll, Salad,  
 Chicken Teriyaki  
**DINNER SPECIAL FOR 2**  
**\$7.99**  
 includes: Rice, Shrimp, Gyoza, Salad,  
 Chicken Teriyaki, Beef Teriyaki



## CALENDAR GIRL HAS CHANGED TO MAKE YOUR WORKOUTS MORE EFFECTIVE!!

- 10 daily aerobic classes
- Power Walking classes
- 2 Stairmaster Machines  
 (Burn 200 calories in 15 min.!)
- personal fitness programs
- complete Weight Room
- jacuzzi and sauna
- Open 7 days a week!



# 6 MONTHS ONLY \$99!

Special ends Mon 9/26  
 at the all new  
**Calendar Girl**

543-3465

University Square

964 Foothill Blvd.

## ATTENTION GRADUATING SENIORS

"One of the half-dozen  
 most powerful forces  
 in American Business"  
 IN SEARCH OF EXCELLENCE

Frito-Lay, Inc., has maintained over a half-century of successful leadership in the consumer goods industry because the professionals we hire share an entrepreneurial spirit. A tradition that started with our founders, has shaped a reputation that has earned us the loyalty of millions of Americans. And, our continued growth and success depends on individuals who are able to make important contributions to our future progress.

## Sales and Operations Management Associates

We are currently seeking top-notch graduates for both Sales and Operations in Southern California. Sales associates will have a ability to impact sales volume, and accept key account and planning responsibility. For Operations, we seek individuals to direct the critical activities of product flow/availability, fleet, facility and asset utilization, as well as budgetary control. A Bachelor's degree, a proven record of significant accomplishments and confident communication and presentation skills are essential. Prior consumer packaged goods experience is helpful.

Frito-Lay offers the in-depth exposure to our organization that you'll need to be successful. We provide an exceptional compensation and benefits package, on-going career development options and advancement potential to match your career goals. Let Frito-Lay put you on the right track-the fast-track.

Four (4) Cal Poly graduates (and two other Frito-Lay managers) will be on campus to conduct an orientation and career planning session:

Thursday, September 22  
 6:30 pm - 8:00 pm  
 Faculty Dining Hall

From 6:00 pm to 6:30 pm, We will conduct a workshop on:

How to Select a Company  
 and  
 Interviewing for the Right Job

All interested seniors are encouraged to participate.

On campus interviews are scheduled for October 12.



# FOOTHILL HACIENDA

190 California Blvd

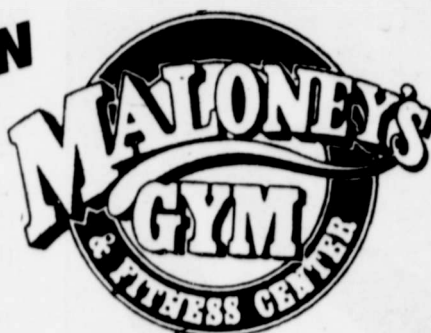
- Large, Fully Furnished Apartments
- Private & Shared Rooms Available
- No Charge Reserved Parking

See Chris in Apt 102

546-0520 or 543-6819

NEW

**Hurry!!!  
Special Sale  
Prices Ending  
Oct. 1st**



3546 So. Higuera #190  
San Luis Obispo, CA 93401  
(805)541-5180

The best Aerobics  
In Town!

The Gym that  
caters to students

**The New Equipment  
Is Here!**

More Arriving Daily

- Free Weights • Nautilus •
- Icarian Equipment • Lifecycles •
- Stair Master • Big Screen TV •
- Tanning Beds • Liferower •
- New Sound System

543-8164

# VIDEO

2161 Broad St.

543-4993

- Largest Selection
- No Deposits
- Night Drop

**FREE MEMBERSHIP  
THIS MONTH  
WITH CAL POLY I.D.!**



**FREE  
MEMBERSHIP**  
(with this coupon)  
expires 10/15/88



**RENT ONE GET  
ONE FREE**  
except new releases  
(with this coupon)  
expires 10/15/88

R.F.R.

IN BOSTON

## Classified

### Campus Clubs

#### \*\*ATTENTION\*\*

ALL CAL POLY STUDENTS!  
SAM(SOCIETY FOR ADVANCEMENT OF  
MANAGEMENT) INVITES ALL MAJORS  
TO  
ATTEND 1st MEETING: THURS 11AM AG  
ENG 123 COME GET THE SCOOP ABOUT  
FRIDAY'S PARTY WITH PUNCH!

#### POLY GOATS

FOUR WHEEL DRIVE CLUB  
RUN AT PISMO DUNES S.V.R.A.  
SUN. SEPT 25 1988 10:00am  
meet at Ag eng. parking lot  
EVERYONE WELCOME! RIDERS TOO!  
CALL SEBASTIAN FOR INFO 5490335

#### ROSE FLAOT CLUB

NEW MEMBER NIGHT  
COME FIND OUT MORE ON HOW TO  
BUILD A FLOAT  
MEETING THURSDAY 8PM UU220

#### SHORIN-RYU KA- RATE

Demonstration Sat. Sept.24 10am  
Crandel Gym  
Classes M7-9pm W9-11pm Sat 10-12am  
New Students M Sept 26 9pm

#### SHPE

FIRST MEETING  
THURSDAY SEPT.22  
6PM MEP(BLDG.40) RM.202  
REFRESHMENTS SERVED

#### YOUNG DEMOCRATS

First meeting  
Tues Sept 27 at 8PM  
Sci North Rm 213

### Announcements

DAY & TIME TO BE SCHEDULED  
BULIMIA SUPPORT GROUP 756-2511

MAKE SOMEONE'S DAY  
BY SENDING THEM A COLORFUL  
BALLOON BOUQUET!  
13 BALLOONS \$11.95 6 FOR \$6.00  
CALL HERE'S TO YOU AT 546-8215  
FREE DELIVERY

MONDAYS 3-5PM

756-2511

STRESS MANAGEMENT GROUP  
CAREER PLANNING WORKSHOPS  
OCT 24th, 31st, NOV 7th

#### PHI DELTS

Invite you to donate  
Blood Today in  
CHUMASH U.U. 207

Bear Valley Auto Parts  
Ad of 9/12/88 WOW LIFE  
should have read:  
Free Quart of Oil  
your choice w/ this ad.  
1 per customer

### Announcements

Procrastination Seminar  
Thur Sept 22nd 10am-12pm  
CHASE HALL RM 104 756-1256

#### REGGAE CONCERT ANDREW TOSH

LIVE! SUN 9/26 8PM AT THE GRADUATE

Test Preparation Seminar  
Tues Sept 27th 10am-12pm  
Chase Hall Rm 104 756-1256

THURSDAYS 756-2511

RE-ENTRY DISCUSSION GROUP  
11AM - 12PM  
INTERPERSONAL GROUP 3-5PM

TUESDAYS 3-4:30 PM 756-2511  
ASSERTIVENESS TRAINING  
WEDNESDAYS 3-4:30 PM 756-2511  
INCEST: A SUPPORT GROUP FOR  
WOMEN  
BIOFEEDBACK FOR STRESS, ANXIETY  
3-5PM  
GAY & LESBIAN SUPPORT GROUP  
6-8 PM

#### WELCOME PARTY

SAT. 9/24 7pm UU220-FREE FILM  
'ITS FRIDAY BUT SUNDAY'S COMIN'  
BSU CHRISTIAN FELLOWSHIP

#### YOU OWN ASI! GET INVOLVED

APPLICATIONS FOR COMMITTEE  
APPOINTMENTS AVAILABLE. SEE  
LINDA LEE IN UU217. BY OCT 6

### Personals

#### \*\*\*WOW 45\*\*\*

YOU GUYS WERE AN AWESOME GROUP!  
THANKS AGAIN FOR THE SHIRTS & STUFF

WE WILL HAVE TO RIDE THE REGGAE  
FREEWAY TOGETHER AGAIN REAL  
SOON!

LOVE YOUR WOW COUNSELORS

#### CHANGE OF ADDRESS

Rec Sports has moved! Stop by our  
new office - UU 119- and pick up  
your copy of Rec Sports Calendar  
of events for Fall 1988.

HAPPY  
BIRTHDAY  
JUICE  
AND  
HAPPY  
BELATED  
LAURA

Lose 10-29lbs in 30 days guaranteed  
call Chris 543-8172

### Greek News

Congratulations sororities on a  
dynamite rush! This year will  
be HOT!! Love, Sigma K

GAMMA PHI BETA  
is so proud to welcome our new  
pledges to CLUB SIGMA!!!!

Psi pledges of Sigma Kappa, your  
actives love you! You are  
definitely OUTTA PSIGHT!!

### Events

#### ROBOCOP

This Fri & Sat, Chumash Aud  
7:00, 9:15pm \$1.75

### Entertainment

FIRST MIDNIGHT MOVIE THIS SEASON

#### BEETLEJUICE

FRI 23 SAT 24 AT THE FREMONT

#### REGGAE CONCERT

ANDREW TOSH  
LIVE SUN 9/26 8PM THE GRADUATE

### Lost & Found

LOST: Decorative wooden box.  
Important to family. Lost in  
Poly Groves Wed Sep 14 about 7pm  
Please return to Judy Phillips  
544-9499

### Wanted

ASSISTANT PLANER \$1763-2142  
Education/Experience equiv. to coll. grad.  
with a Bachelor's Degree in  
Planning or closely related field.  
No add'l exp. required. CDL required  
at time of application. Submit  
County application form to Personnel  
Office, Room 384, County Govt.  
Center, San Luis Obispo, Ca 93408,  
by 9-23-88. (805)549-5959.  
JOBLINE PHONE NUMBER: (805) 549-  
5958  
AN EEO EMPLOYER.

### Services

3EB Builders no.489905 544-7235  
maintenance & repair, inspection,  
construction, remodeling. 8am-6pm

MAJOR BANK NEEDS ENROLLERS for  
College Master Charge Plan PO 860  
Bonsall, CA 92003 619-758-0888

### Typing

544-1305.SR PROJECT SPECIALIST  
LINDA BLACK - 983 OSOS SLO

DOCUGRAPHICS: Word Processing  
Fast Service - Student Rates  
937-6992/Santa Maria-7 days/wk

### For Sale

**LASER PRINTED TYPING**  
Call: The Latest Word 528-8505

R&R WORD PROCESSING AND TYPING  
(Rona),LASER PRINTER w/100+ type fonts,  
student rates,544-2591.by appt. only

RESUME, PAPERS, PROJECTS, WORD  
PROCESSING DONE IN SO. CTY  
CONSHA'S OFFICE SUPPLY PISMO  
BEACH 773-5851 OR 489-0724 EVE

WORDPROCESSING-FAST-REASONABLE  
LOCAL-PAPERS-PROJECTS-RESUMES  
528-7078 (L.O.) 7 DAYS/WK

### Miscellaneous

SENSATIONAL POSTERS! Mind-boggling  
art. Free catalog. T.E. Breitenbach,  
PO Box 538A, Altamont NY 12009.

### Opportunities

**AEROBICS!SIGNLAN-  
GUAGE! SOCIAL  
DANCE! AND MORE!**

Sign-up for a  
Rec Sports Fitness & Leisure Class  
in UU 119 (we've moved!) or call  
1366 for more info.

#### DO YOUR SENIOR PROJECT

for the Topsy Taxi Program!  
Art Bus Jour/PR Mktg Stat Majors  
Welcome - Call Frank at 543-2968

MODELS WANTED:COMPLIMENTARY  
CUTS  
PERMS & COLORS MATRIX HAIR SHOW  
CALL 541-2015 OR 773-2015 EVES.

### Employment

ALL YOU HAVE TO DO IS WHISTLE  
Become an Intramural Official  
Attend training Clinics Sept 24 &  
25. Call Rec Sports for info x1366.

Preschool teacher must love work  
with 2 1/2-6 yr olds ECE preferred not  
required flex. schedule 927-5795

WORK STUDY JOB  
If you like working with people  
This Jobs For You!  
\$5.50/hr. Flexible Hrs.  
Call Kathy 541-6751

### For Sale

Cheap Pine Shelf units,desk,end &  
coffee tables \$15to\$69 541-1365

DESKS FOR SALE \$40-90 OR BEST OF-  
FER  
DESK CHAIRS TOO CALL 544-4848 EVE-  
NINGS OR LEAVE MESSAGE ON TAPE

ROTTWEILER X PUPS FOR SALE  
(2 MALES/2 FEMALES) \$50.00 EA  
CONTACT BRUCE AT 549-8956 EVES

Typewriter IBM selectric IT \$340  
correcting, wide carriage 489-1097

### Typing

SKI GEAR: STREULE SWISS 190cm,  
SALOMON SK91 BOOTS 10M, TYROLIA  
490 BINDINGS. POLES/BAGS ALL \$200  
CALL 543-2106 AFTER 6PM.(ALL NEW)

### Automobiles

1967 Mustang 289 Automatic Great  
condition in and out \$3800 OBO  
Scott 461-9307 541-3737

CLASSIC MUSTANG 66 RED  
CALL JOHN 528-5711 \$5,400.00  
REAL CLEAN RUNS EXCELLENT

GMC 1985 S-10 BLAZER 4x4 Auto  
A/C AM/FM Cassette New Tires &  
Brakes xint cond must sell!  
\$9000 or best offer 489-2858/f

### Roommates

Fem Rmmtes needed 4 Pine Creek  
condo w/d microwve, call 544-0841

FEMALE TO SHARE OWN ROOM IN 3  
ROOM MORRO BAY HOUSE WITH 2  
NICE GUYS.OCEAN VIEW BUS ACCESS  
DEREK OR ANDY 772-1642

FM RMMT WANTED TO SHARE MASTER  
BDRM IN LAGUNA HOUSE  
washer/dryer/lots or room  
\$195/share.541-3273

OWN ROOM W/DR MICRO Close to  
school Pinecreek Fall \$275  
541-4936

### Rental Housing

2 bdrm apts. furn or unfurn. 9 month  
lease. Pool, Tennis, Free utilities.  
Call 544-7772

FURNISHED 3 BDM APT 10 OR 12  
MONTH LEASE 543-1452

M roommate for Fall ONLY  
\$190 mo., share rm in house  
close to Poly call 544-2552

OCEAN VIEW,DECK,1 BD,1 BA,Microwv  
DEN/KITCHENETTE,FURNISHED,UTIL PD  
15 M TO POLY,400/MO (818)348-2503

### Homes for Sale

AAA/BEST PRICED CONDOS & HOMES  
LISTED FREE INFORMATION PACKET  
AVAILABLE ON CAMPUS CALL  
MARGUERITE CENTURY 21 541-3432

Perfect for student 12x45 Mobile  
Home in SLO Kids and Pets ok  
\$20,000. 549-8528

### Date

Thursday, September 22, 1988



## Family Fun Fair

**Arcade Action With Over 55 Games!**

Located at The  
Corner of Santa Rosa & Foothill

JOHN KOGER

is pleased to announce  
that he is now doing business as

# Annuities West

specializing in  
Tax-Sheltered Annuities  
Single Premium Deferred Annuities  
Life Insurance

Serving Cal Poly's Faculty and Staff for over 10 years

541-4872 • P.O.Box 4008 • San Luis Obispo, CA 93403

## STITCHES

We specialize in basic and complex alterations,  
leather goods, prom dresses, and redesign.

MON 9:00-5:00

TUE, WED, THUR, AND FRI 9:00-5:30

SAT 11:00-2:00

940 CHORRO ST., SLO



across from the parking garage

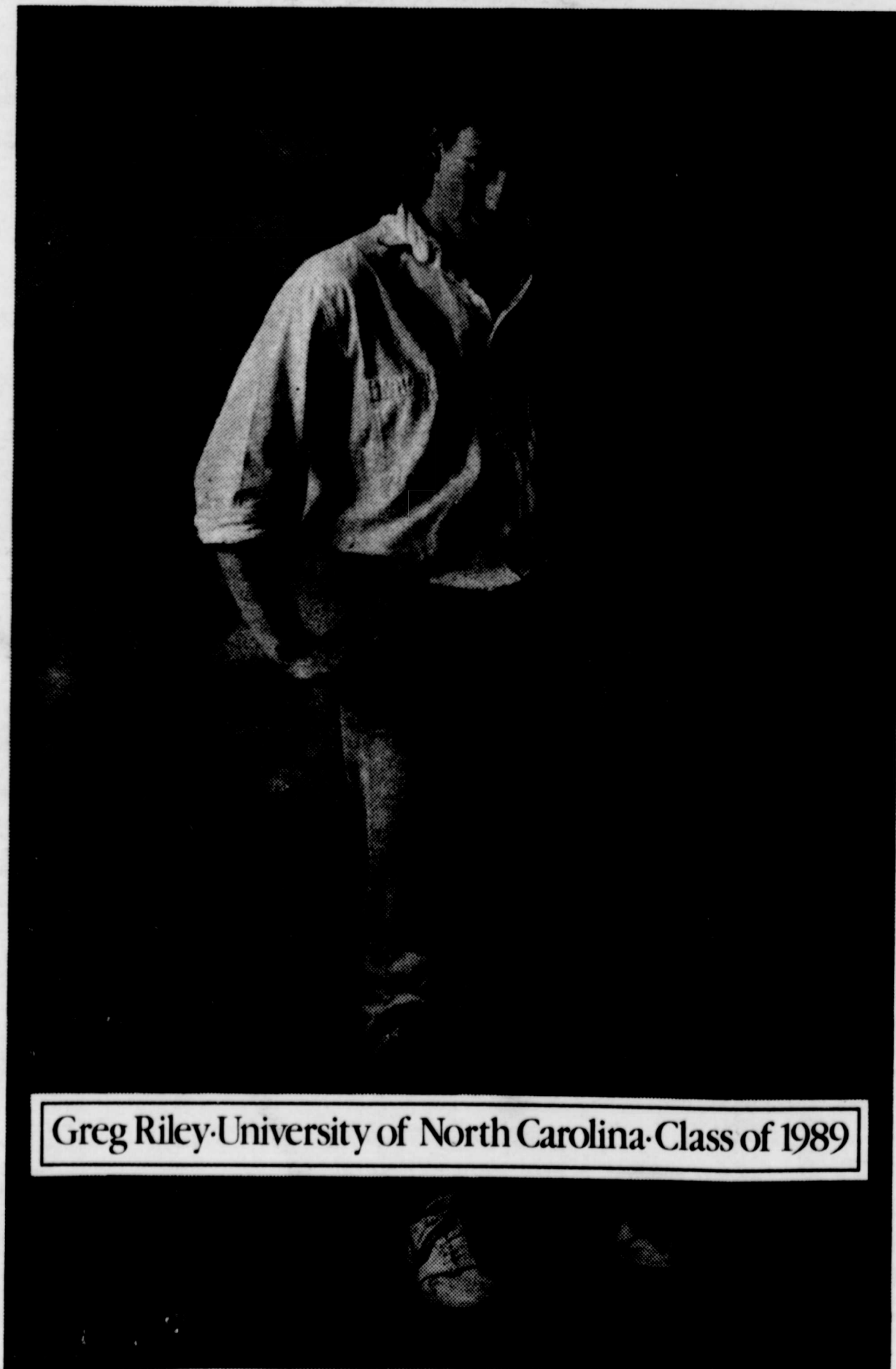


**Offers a complete  
selection of ALL  
your supply needs.**

Architectural • Art • Engineering • Technical Supplies



“I don't want  
a lot of hype.  
I just want  
something I  
can count on.”



Greg Riley • University of North Carolina • Class of 1989

Some long distance  
companies promise you  
the moon, but what you  
really want is dependable,  
high-quality service. That's  
just what you'll get when  
you choose AT&T Long  
Distance Service, at a cost  
that's a lot less than you  
think. You can expect low  
long distance rates, 24-hour  
operator assistance, clear  
connections and immediate  
credit for wrong numbers.  
And the assurance that  
virtually all of your calls will  
go through the first time.  
That's the genius of the  
AT&T Worldwide Intelligent  
Network.

When it's time to  
choose, forget the gimmicks  
and make the intelligent  
choice—AT&T.

If you'd like to know  
more about our products or  
services, like International  
Calling and the AT&T Card,  
call us at 1 800 222-0300.



**AT&T**

The right choice.

## BOOSTERS

From page 17

is funded through money the  
Boosters raise with their La Fi-  
esta booth, annual kick-off  
barbecue, the John Madden Ce-  
lebrity Golf Classic, the Mike  
Krukow Celebrity Golf Tourna-  
ment and the annual membership  
fund drive.

Boosters' membership is 390  
this year, and for the very first  
time, there is a student SUMAT  
group, said Delmartini.

The student SUMAT program  
allows students to join the  
Mustang Boosters and receive  
membership perks (e.g. reserved  
parking, tailgate party invita-  
tions, etc...) at a less expensive  
cost.

The members' gift amounts  
have increased from last year,  
said Delmartini. "I, however,  
would like to increase member-  
ship and gain a broader support  
base."

"The next step for Boosters is  
moving into the statewide por-  
tion of the SUMAT campaign,"  
said Strom. "They have to raise  
the remainder of monies to reach  
the state goal of \$175,000."

"With the effort shown by the  
Boosters, the statewide goal  
should be easily met," said Larry  
Voss, associate vice-president of  
university relations.

**WANT A FUN BUISNESS**  
to operate in your spare  
time? How about an  
established singing telegram  
buisness? Only \$7500.



1034 Mill Street  
San Luis Obispo, CA  
544-7884



**THEY DON'T  
EAT AT**

7 a.m. - 9 p.m. *Paul's*

**HONEST HOMECOOKING**

543-3454 2121 Broad St., S.L.O.

## CHAPTER ONE QUIZ

**Q. Where can you go  
Every Saturday for**

- \* 75¢ Draft Beer all day
- \* BBQ Ribs, Tri-Tip,  
& Chicken
- \* The best burgers in town
- \* To Go orders welcome
- \* T.V. Sports
- \* Darts
- \* Free Parking

**Answer:**

543-6427  
785 Foothill Blvd., SLO  
CHAPTER ONE