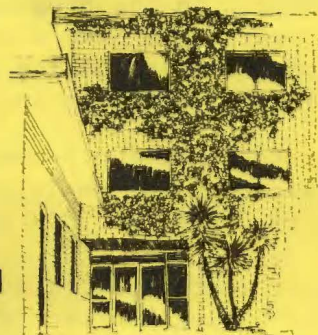




Volume 26, Number 28

March 10, 1975

TENAYA HALL OCCUPANTS WILL MOVE TO 'RELOCATABLES'



- Faculty and staff members who have been occupying Tenaya residence hall will have to move out to make room for students, following authorization by the Board of Trustees of The California State University and Colleges, for temporary office facilities at several sites according to E. Douglas Gerard (Executive Dean). The vacating of Tenaya Hall is required by the federal bonding agreement which stipulates that the residence halls must be used for housing when a demand is evident, Gerard noted.

Gerard said the change in the faculty office picture for next Fall is based on approval Feb. 26 of a revised physical master plan for the Cal Poly campus. One of the items approved by the trustees includes nine sites to be used for relocatable office units as faculty offices. Gerard said 15 of the units, resembling mobilehome trailers, are available from California State University, Hayward, and are already owned or under lease by the system. He added that the nine sites can accommodate up to 25 relocatables. The exact locations of the 15 trailers on these nine sites will depend upon which areas of instruction are represented in the allocation of space requested by school deans for the next academic year. The widely separated sites have been located so as to minimize visibility, accommodate faculty near their instructional areas, and be located convenient to utility hookups and restrooms.

The site plan provides for two units at the Ornamental Horticulture Lab, two units at the aeronautical hangar, four units near Tehama Hall, two units on the lawn of Metallurgical Engineering, two units occupying the former handball courts near Crandall Gym, three units near South Cafeteria, two units by the Science Building in an area currently used for parking, four units near Graphic Arts in an area now used for paraplegic parking (which will be relocated elsewhere) and four units near the physical education building. Gerard said he does not expect that the latter site will be used for the 15 initial units.

The 15 units will accommodate some 90 faculty and support staff. Noting that during the past three years Tenaya residence hall has accommodated approximately 168 faculty and staff, Gerard said the university had to make a commitment to the trustees to utilize other temporary locations for faculty offices during 1975-76. These include:

- Vacating the former Air Conditioning Auditorium which has been utilized by HEP (High School Equivalency Program), providing 36 faculty and support staff spaces.
- Utilizing the three staff-occupied campus cottages on Campus Way to provide for approximately 18 faculty. Staff members occupying the cottages were notified about a year ago that they would need to vacate by June 30.

(continued on p. 2)

● PAYROLL WITHHOLDING PARKING REMINDER

\$?



Faculty and staff are reminded that payroll withholding for payment of parking fees may be started in the Spring Quarter for those currently not participating in the program. Those wishing to start the 12-month plan will not be required to make a cash payment if they complete the necessary procedures for payroll withholding prior to Mar. 16. Application may be made after that date (Mar. 17 through Apr. 15), however, a cash payment of \$3.33 will be required.

Those wishing to start the 9-month plan will be required to make a cash payment of \$2.50 if their application is completed prior to Mar. 16. If the application is completed during the period from Mar. 17 through Apr. 15, a cash payment of \$5.00 will be necessary.

The last day on which applications for payroll withholding of parking fees can be accepted for the Spring Quarter is Apr. 15. Those starting in the payroll withholding plan in the Spring Quarter will receive a Spring Quarter parking permit; an annual permit will be issued prior to the start of their new parking year. Full details of the payroll withholding plan are described in a memorandum, copies of which have been furnished to all deans and department heads. Individual copies are available from the University Cashier, 131-E during business hours (8:30 a.m. to 4:30 p.m.).

Those wishing to participate in the payroll withholding plan should go to the Payroll Services Office in Admin. 109 to obtain Forms CD-88 and FO 74-03. They should take these completed forms to the University Cashier in Admin. 131-E.

● BRAKEBILL TO RETIRE

The retirement of Executive Vice Chancellor Harry E. Brakebill this spring has been announced by Chancellor Glenn S. Dumke of The California State University and Colleges system. Brakebill served 37 years in the system and as the CSUC's ranking administrator under Chancellor Dumke for the past six years.

Chancellor Dumke said Mr. Brakebill's retirement will be within the next two or three months, the exact date to be determined. Brakebill has been a member of the Chancellor's staff since 1965 when he was appointed Vice Chancellor, Business Affairs. He was named Executive Vice Chancellor in June, 1969. From 1948 until joining the Chancellor's Office, Mr. Brakebill was at San Francisco State: as Business Manager (1948-59), Executive Dean (1959-63), and Vice President, Business Affairs (1963-65).

Previously he was Assistant Comptroller at San Jose State College (since renamed San Jose State University) (1945-48), an officer in the Navy Supply Corps (1943-45), and Accounting Officer at San Jose State (1938-43). Born in September, 1914, Mr. Brakebill received a B.S. degree in political science and economy at San Jose State in 1937.

● TENAYA INHABITANTS TO MOVE (continued from p. 1)

- Utilizing Chase residence hall for some 30 faculty and staff spaces. Chase has been used for scholarship housing. Everett M. Chandler (Dean of Students) has indicated that an equal amount of scholarship housing will be provided by increasing occupancy in Heron and Jespersen Halls for next year.

Gerard said the allocation of trailer assignments and other temporary office assignment for faculty and office staff has not been yet worked out and will depend upon requests for space allocation and recommendations received from the various academic deans.

● SINGERS WILL TOUR MISSIONS



The sound of choral music will echo through six Central Coast missions when Cal Poly's University Singers make their annual concert tour for 1975. The five-day tour will open with an evening performance at Mission San Miguel, north of Paso Robles, on Thursday (Mar. 20), and end with a 2 pm concert on Monday (Mar. 24) at Mission San Antonio de Padua in Jolon. Also planned are concerts in Lompoc, San Luis Obispo, Solvang, and Ventura.

The choir will be accompanied by a 12-piece instrumental group composed of members of Cal Poly's Chamber Orchestra, according to John Russell (Music). Russell, who will conduct both the 40-member singing group and the instrumental ensemble, said music programmed for the concert will include compositions by Scarlatti, da Palestrina, Vivaldi, and Escovado. Fifth in a series of missions tours that began in 1970, the University Singers tour is jointly sponsored by Cal Poly's School of Communicative Arts and Humanities and Music Department.

● SOCIAL SECURITY COST INCREASED

On Jan. 1, the wage base for Social Security increased from \$13,200 to \$14,100. This means that if an employee has Social Security coverage (indicated as "Current OASDI" on the statement card attached to pay checks), the gross salary up to \$14,100 is taxable for social security at the continuing rate of 5.85%. There is no increase in deduction for persons earning \$13,200 or less. The higher base rate was enacted to finance increased benefits needed to offset inflationary increases in the cost of living.

● MEMORIAL SERVICE FOR DOROTHY COOK PLANNED

The university was saddened by news of the death of Dorothy Cook, wife of David W. Cook, Associate Dean, Curriculum and Instruction, on Thursday (Mar. 6). Mrs. Cook was raised in Ventura County and had lived in San Luis Obispo since 1940. She was a county employee working as a clinical laboratory technician, with extensive interests in education and Parent-Teacher Association work. She was a district officer of the P.T.A. A memorial service is planned for 10 am on Saturday (Mar. 15) at the Mt. Carmel Lutheran Church on Frederick St. in San Luis Obispo, Pastor Charles Paulsen presiding. All Dorothy's friends at Cal Poly are invited to attend. Those wishing to make memorial donations may do so to the 24th District P.T.A. Scholarship Fund, 912 Vine St., Paso Robles.

● FACULTY ART SHOW

Art work by 16 faculty and staff of the Cal Poly Art Department will be displayed in a faculty art show from Monday (Mar. 10) to Friday (Apr. 11) in the University Union Galerie. Titled "Assembled," the free exhibit will include works of painting, drawing, ceramics, sculpture, photography, and metalsmithing.

Artists whose work will be included are Roger Bailey, David Bodlak, Barbara Brodsky, Maureen Cook, Bernard Dusek, Dennis Friend, Arlene Golant, Richard Harrison, Charles Jennings, Larry Kappen, Erna Knapp, Bernice Loughran, Pierre Rademaker, Joyce Rezendes, Donna Simmons, and Henry Wessels. The Cal Poly Art Department and the Fine Arts Committee of the ASI are sponsoring the show, which will be open for public viewing during operating hours for the University Union.

● SYMPHONIC BAND SPRING TOUR PLANNED

Nine performances in San Joaquin Valley and Bay Area communities are included on the schedule for the 1975 concert tour of the Cal Poly Symphonic Band. The band's itinerary will open on Tuesday (Mar. 18) with a concert in Taft and conclude with a performance for patients of the Shriners Crippled Children's Hospital in San Francisco on Saturday (Mar. 22). The student ensemble, along with a contemporary studio band, Percussion Ensemble, and the University Winds Ensemble, will offer daytime programs of marches, overtures, rock and jazz, and classical band music for campus audiences in Brentwood, Modesto, Porterville, and Taft. Evening concerts, to which the public is invited, are planned in Bakersfield, Hanford, Ripon, and Sunnyvale.

The Symphonic Band has accepted an invitation from the Mayor of Vienna, Leopold Gratz, and Dr. Fred Sinowatz, Austria's minister of education and art, to be the featured resident band for the 1975 International Youth and Music Festival. Some 2,000 young musicians from throughout Europe, the Middle East, and North America are scheduled to take part in the festival from July 4-17, in Vienna. Programmed for the Cal Poly students' 1975 tour performances are such numbers as "Stars and Stripes Forever" by John Phillip Sousa; Alfred Reed's "Puchinello, Overture to a Romantic Comedy"; and "Festive Overture" by Dmitri Shostakovich.

● LIBRARY HOURS DURING FINALS AND QUARTER BREAK

In order to provide library services and study facilities during the final examination period, the Library will be open until 10 pm on Friday and Saturday (Mar. 14 and 15). The reserve book room will remain open for study and service until 12 midnight from Friday (Mar. 14) until Monday (Mar. 17). Library hours during this period will be as follows:

Friday (Mar. 14).	7:45 am to 10 pm
Saturday (Mar. 15).	8 am to 10 pm
Sunday (Mar. 16).	1 pm to 10 pm
Monday (Mar. 17).	7:45 am to 10 pm
Tuesday (Mar. 18)	7:45 am to 7 pm

The Library schedule for quarter break will be as follows:

Wednesday through Friday (Mar. 19-21)	8 am to 5 pm
Saturday (Mar. 22).	9 am to 1 pm
Sunday (Mar. 23).	Closed
Monday and Tuesday (Mar. 24 and 25)	8 am to 5 pm

The Library will resume regular hours on Wednesday (Mar. 26).

● NEW EQUIPMENT IN E. T. DEPARTMENT

Five numerically-controlled machine tools have been recently added to the complement of laboratory equipment available to students of the manufacturing processes option in the Engineering Technology Department at Cal Poly. Included are a point-to-point numerical control (n/c) on a positioning drill table; a point-to-point n/c on a milling machine with linear and circular interpolation with Quilltrol; a three-axis n/c on a milling machine; and a lathe with n/c. Other equipment added to the department's laboratories in the past year include a Cincinnati EDM (electrical discharge machine), a Royal Master centerless grinder, and a Tesker thread rolling machine.

● FOOD SERVICE HOURS ANNOUNCED

According to John Lee (Director, Foundation Food Service), the following hours of operation will be observed during quarter break:

Staff Dining Room Open weekdays, 7:30 am to 3:30 pm; closed weekends
Vista Grande Cafeteria. . . Closed Friday (Mar. 14) through Sunday (Mar. 23)
Reopen Monday (Mar. 24) at 11 am
Vista Grande Restaurant . . Open regular hours, 11 am to 9 pm
Student Dining Room Closed Wednesday (Mar. 19) through Tuesday (Mar. 25)
Reopen Wednesday (Mar. 26)
Snack Bar, Annex, and
Ice Cream Parlour Closed Wednesday (Mar. 19) through Sunday (Mar. 23)
Reopen Monday (Mar. 24)
Burger Bar. Closed Wednesday (Mar. 19) through Saturday (Mar. 22)
Reopen Sunday (Mar. 23) at 12 noon

● FRENCH-CANADIAN LUNCH AT VISTA GRANDE

An international lunch featuring French-Canadian food will be available at Vista Grande Restaurant on Wednesday (Mar. 12) between 11 am and 2 pm. The French-Canadian lunch menu consists of: onion soup; cabbage salad Champlain; north country baked beans; ham Montreal -- in ginger sauce; herb bread and apple pan dowdy. The French-Canadian lunch is priced at \$1.95.

● CARTOONIST'S WORKS AT EL CORRAL

Paul Mono, a senior majoring in English/Journalism, and the 'official' cartoonist of the Mustang Daily for several years, will display a selection of original cartoons in the Mini Art Gallery of El Corral Bookstore thru Friday (Mar. 21). Other than political cartoons for the Mustang Daily and a national magazine, Paul illustrates books, articles and draws advertisements. Born in Los Angeles, Paul eventually wants to return to Los Angeles to work with the L.A. Times.

● FUNCTIONAL EDUCATION SYMPOSIUM (II) SCHEDULED

Grant D. Venerable (Chemistry) will present the second installment of the Symposium on "Functional Education" on Thursday (Mar. 13) at 11 am in University Union Room 220. For the past two years, Dr. Venerable has directed Cal Poly's Pilot Project for Innovation on "Individualized Large-Group (Diagnostic-Prescriptive) Instruction," which is being funded by the Chancellor's Office with two grants totalling \$47,000. This will be the first direct reporting on this sometimes-controversial experiment in education, its frustrations, its growth pains, and its successes.

.....

● Typewritten copy intended for the next issue of Cal Poly Report must be received prior to 12 noon on Friday (Mar. 14) in the Public Affairs Office, Adm. 210. Copy intended for Cal Poly Dateline is due in the Public Affairs Office by 12 noon on Tuesday (Mar. 11).

● WHO . . . WHAT . . . WHEN . . . WHERE ? ? ?

Marcus Gold (Audio-Visual Service Coordinator) was one of 14 persons attending a week long seminar on basic motion picture production sponsored by the Eastman Kodak Company in San Francisco, Feb. 10-14. It featured individual assignments with an emphasis on editing. Gold was also re-elected to the Board of Directors of the SESLOC Federal Credit Union at the annual meeting in February. SESLOC is the credit union which serves campus faculty and staff.

Priscilla Graham (Reference Librarian) attended the Total Interlibrary Exchange Board meeting in Santa Barbara on Jan. 17. Among changes in the operation discussed was the transfer of the financial management from Ventura County to the San Luis Obispo City/County Library.

Marry Harris (Serials Librarian) attended a Library Systems Project Workshop on the Union List of Periodicals in San Francisco on Jan. 14. The workshop was concerned with reviewing the capabilities and requirements for using the system in updating the third edition of the Union List of Periodicals.

Jack B. Jones (Education) presented a paper titled, "Developing Reading Skills for the Gifted Student," at the California Association for the Gifted. The conference, which was attended by over 2,000 parents, teachers, and administrators, was held in San Francisco on Feb. 28-Mar. 1.

David H. Thomson (Biological Sciences) participated in the Spring Supervisors Planning Meeting for Park Rangers at Sequoia National Park on Mar. 1-2. Special emphasis was directed toward the development and planning of children's programs for park-wide implementation.

Vincent J. Gates (Journalism) attended the West Coast Journalism Seminar sponsored by (MORE) Magazine of New York in San Francisco, Feb. 21-22. Mark Looker, a student from the Mustang Daily, also attended panel sessions of the seminar.

Neil W. Webre (Computer Science and Statistics) presented a paper titled, "The Masters Practicum: A Bridge Over the Industry/University Gap," at the Association for Computing Machinery's Special Interest Group on Computer Science Education national meeting in Washington, D.C. on Feb. 20-21.

Twelve members of the Physics Department attended the annual joint meeting of the American Physical Society and the American Association of Physics Teachers in Anaheim on Jan. 29-Feb. 1. Sessions of general interest dealt with energy sources, recent developments in astrophysics and elementary particles, and workshops in computer assisted instruction. David W. Hafemeister participated in coordinating some of the sessions and chaired a session of the Forum on Physics and Society. Walter E. Elliott presented a paper at an American Association of Physics Teachers session titled, "Career Oriented Pre-Technical Physics Project." This paper reported on Elliott's work with a pre-technical physics curriculum tested in four Dallas high schools during the 1973-74 school year.

Bruce Atwood (Physics) is co-author of a paper titled, "Group Velocity Correction to Lunar Ranging," which was published in the September/October 1974 issue of The Moon, an international journal of lunar studies. The paper deals with the dispersive correction for the round trip lunar ranging distance, and presented as a function of wavelength and humidity.

CANDIDATES FOR FACULTY POSITIONS BEING SOUGHT

Candidates for positions on the faculty of the university are presently being sought, according to Donald L. Shelton (Director, Personnel Relations). Those interested in learning more about the positions are invited to contact the appropriate dean or department head. This university is subject to the requirements of Executive Order 11246 and is an Affirmative Action Employer. All interested persons are encouraged to apply. Following is a description of the available positions:

Lecturer, Range B (\$3,960-\$4,816/quarter), History Department, School of Communicative Arts and Humanities, Spring Qtr. 1975 only. Duties and responsibilities include teaching four United States History general education courses, emphasis on 20th Century America. Ph.D. preferred.

Lecturer, Range B (\$2,376-\$2,890/quarter), (Part Time), Home Economics Department, School of Human Development and Education. Duties and responsibilities include teaching required lower division Interior Design course with emphasis on the family and consumerism. Candidates should possess a doctorate in Home Economics with specialization in housing, beginning design, and interior design. Position available Spring Quarter, 1975 only.

Lecturer (\$11,880-\$18,432, depending upon preparation and experience), Men's Physical Education Department, School of Human Development and Education. Duties and responsibilities include instructing in the area of School Health Education. Applicant must have previous experience in instructing drug education classes and possess a Doctorate in Health Education. Position available 1975-76 academic year.

Lecturer, Range A (\$718-\$874/quarter) (Part Time for Spring Quarter only), Education Department, School of Human Development and Education. Duties and responsibilities include teaching a 3-unit course, Ed. 402, Counseling the Minority Student, undergraduate Education. Preference will be given to candidates with the doctorate.

Lecturer, Range A (\$718-\$874/quarter) (Part Time for Spring Quarter only) Education Department, School of Human Development and Education. Duties and responsibilities include teaching a 3-unit course, Ed. 470, Education of the Asian-American, undergraduate Education. Preference will be given to candidates with the doctorate.

Lecturer, Range B (\$792-\$963/quarter) (Part Time for Spring Quarter only) Education Department, School of Human Development and Education. Duties and responsibilities include teaching a 3-unit course, Ed. 516, Supervision of Instruction, graduate Education. Preference will be given to candidates with the doctorate.

Lecturer, Range B (\$792-\$963/quarter) (Part Time for Spring Quarter only) Education Department, School of Human Development and Education. Duties and responsibilities include teaching a 3-unit course, Ed. 525, Group Guidance, graduate Education. Preference will be given to candidates with the doctorate.

Lecturer, Range B (\$792-\$963/quarter) (Part Time for Spring Quarter only) Education Department, School of Human Development and Education. Duties and responsibilities include teaching a 3-unit course, Ed. 541, Administration of Pupil Personnel Services, graduate Education. Preference will be given to candidates with the doctorate.

Lecturer, Range A (\$449-\$546/Mo.), (Part Time for Spring Quarter only), Child Development Department, School of Human Development and Education. Duties and responsibilities include half-time teaching of a pre-school laboratory class. Candidates should possess a master's degree in Child Development.

Lecturer, Range A (\$225-\$273/Mo.), (Part Time for Spring Quarter only), Child Development, School of Human Development and Education. Duties and responsibilities include teaching one section of a course on Preschool Development. Candidates should possess a master's degree in a related field.

Lecturer, Range A (\$225-\$273/Mo.), (Part time for Spring Quarter only), Child Development Department, School of Human Development and Education. Duties and responsibilities include teaching a course on the Afro-American Pre-school Child. Candidates should possess a master's degree in a related field.

Lecturer, Range B-C (\$990-\$1,536/Mo., depending upon qualifications and experience), (Leave replacement for Spring Quarter, 1975 and for academic year 1975-76), Child Development Department, School of Human Development and Education. Doctorate in Family Studies or related fields preferred. Duties and responsibilities include teaching lower and upper division courses in Family Studies. Demonstrated teaching and scholarly proficiency in Family-related academic areas required.

Lecturer (\$1,556-\$1,893/Quarter, depending upon qualifications and assignment), (Part time for Spring Quarter only), Women's Physical Education Department, School of Human Development and Education. Teaching assignment to include general activity classes in figure control and modern dance. Candidate should possess a master's degree and some secondary experience.

● CRANDALL POOL WILL TEMPORARILY CLOSE

Crandall pool will be closed for repairs from Saturday (Mar. 15) through Monday (Mar. 31.). The pool will not be available for use during this period. A further announcement will be published in Cal Poly Report announcing the reopening of the pool.

● SUPPORT STAFF VACANCIES LISTED

Vacant support staff positions have been announced by Robert M. Negranti (Staff Personnel Officer). Descriptions of the positions and other vacancies are posted outside the Personnel Office, Adm. 110, ext. 2236. Contact the Personnel Office to obtain an application. This university is subject to the requirements of Executive Order 11246 and is an Affirmative Action Employer. All interested persons are encouraged to apply. The positions are:

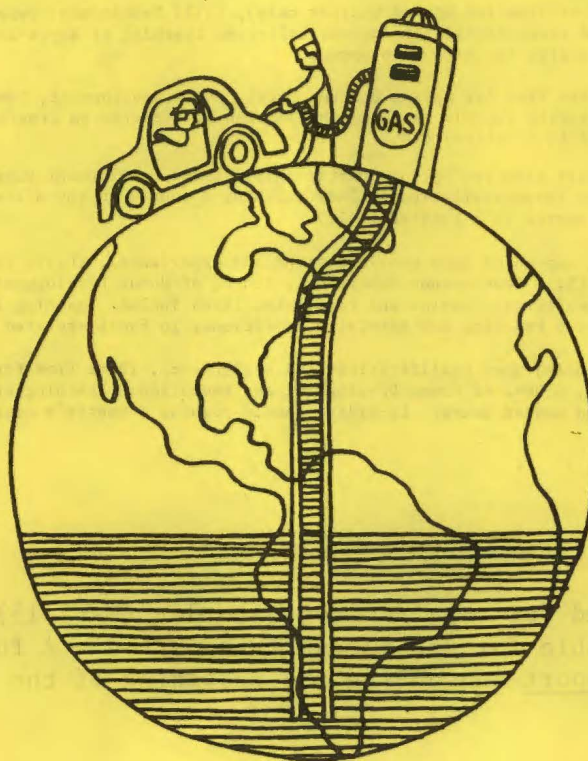
Clerical Assistant II-B (\$301.50-\$367.00/month) (Half Time), Educational Services Office, Academic Affairs Division. Duties and responsibilities include circulating, recording, typing, and reproducing articulation requests and recommendations; assisting with followup studies related to the development of the quarterly class schedule; dictaphone and shorthand transcription, filing, and operating calculating equipment. Requirements: High School graduate with one year clerical experience, type 45 wpm, shorthand at 90 wpm, and must have taken the General Clerical Test. Applications must be received by March 18, 1975.

Clerical Assistant II-A (\$280.50-\$341.50/month) (Half Time), Library--Technical Services, Serials Section, Academic Affairs Division. Duties and responsibilities include ordering, checking and processing departmental periodical subscriptions; typing and maintaining correspondence related to departmental periodical subscriptions; performing clerical duties as assigned by Serials Librarian. Requirements: Must have one year clerical experience, type 45 wpm, and must have taken the General Clerical Test. All applications must be received by March 18, 1975.

Departmental Secretary I-A (\$619-\$752/month), Art Department, School of Communicative Arts and Humanities. Duties and responsibilities include typing correspondence and instructional materials; serving as receptionist for departmental office; maintaining departmental files and operating expense budget; supervising 1-2 student assistants and computing monthly student payroll; ordering, cataloging and maintaining slide library of 6000+ slides. Requirements: three years clerical experience, typing 45 wpm and must have taken the General Clerical Test. B.A. in Art History preferred. Applications must be received by March 18, 1975.

Clinical Laboratory Technologist (\$526.50-\$609.50/month) (Half Time), Health Center, Student Affairs Division. Duties and responsibilities: performs technical work in a clinical lab. General knowledge of principles and practices of clinical lab work and use and care of lab equipment; skill in preparing, mounting and staining specimens, in reading tests, in setting up lab apparatus, and in making quick and accurate serological, bacteriological, and biochemical tests and analyses. Requirements: Current California clinical lab technologist's license or similar of equal or higher level. Bachelor of Science degree preferred. All applications must be received by March 21, 1975.

Departmental Secretary I-B (\$634-\$770/month), Ornamental Horticulture Department, School of Agriculture and Natural Resource Management. Duties and responsibilities include advising students and prospective students, dictation and typing for department head and entire faculty, keeping accurate account of department budget and ordering supplies, keeping accurate account of students' records, and acting as receptionist. Requirements: Two years of clerical experience, High School graduate, typing 45 wpm, shorthand at 90 wpm, and must have taken the General Clerical Test. All applications must be received by March 18, 1975.



encouraging notes

March 11, 1975

NSF Guide to Programs This useful publication of the National Science Foundation lists programs and other foundation information for the Fiscal Year 1975. Ask for it by title or code number (74-42) if you wish to review it in Administration 317.

Some high points of the material: A brief description of the National Science Foundation followed by these listings of activities: Scientific Research Projects, National and Special Research Programs, and Research Applications. The section of National Research Centers identifies certain centers and observatories which may be visited in some circumstances by properly credentialed faculty. The largest section is Science Education--a listing of some thirty or forty programs in this area. The final section deals with Special Programs and includes travel grants and special programs.

The format of information on each program includes a general description of the purposes and interest areas of the program, eligibility or who may apply, deadlines, and addresses where further information may be obtained.

This guide is a valuable resource to find out what NSF programs are available to fit your needs and interests. You're welcome to use it in Administration 317.

* * *

Ecological Impact Assessment Studies The Environmental Protection Agency is interested in proposals to conduct field ecological studies of selected toxic substances in designated geographic locations. The proposer may also be required to conduct simulated laboratory study using species indigenous to particular terrestrial and/or aquatic ecosystems. The studies will determine the extent and rate of uptake, bioaccumulation and biomagnification of toxic substances in organisms representative of specific trophic levels. For further information, contact: (No deadline given)

L. R. McKay
Environmental Protection Agency
Contracts Management Division
R&D Procurement Section
Crystal Mall No. 2, Room 700
Washington, DC 20460
(703) 557-7460

* * *

EPA Studies The Environmental Protection Agency has issued a request for proposals for a study including: 1) research on the influence of environmental variables on the collection efficiency of nitrate present in ambient air; 2) the development of a reliable sampling procedure for the quantitative and accurate collection of atmospheric nitrate; and 3) the development of a sensitive analytical method for the determination of microgram amounts of atmospheric nitrate. No deadline given. Contact: Attention MS NCCM-W, Environmental Protection Agency, Contracts Management Division, Office of Administration, Research Triangle Park, North Carolina, 27711.

NEH - California Council for the Humanities in Public Policy The National Endowment for the Humanities is establishing state councils on the humanities. California Council is now in operation and in the process of selecting a theme for 1975. It is expected that the theme will be selected by the middle of the month and that guidelines and grant applications will be available in May. About \$500,000 will be available in amounts from \$3000 to \$25,000 for grant awards. Agencies and non-profit institutions will be eligible for support in such fields as philosophy, linguistics, jurisprudence, history, political theory, archaeology, literature, etc. The intent of this program is not to bolster campus programs, but to enhance public participation in humanities projects. Unknown deadline. For further information contact:

Bruce Sievers, Executive Director
California Council for the Humanities
in Public Policy
593 Market Street, Suite 900
San Francisco, CA 94105

* * *

AID - Research on Women in Development An Agency for International Development policy statement requires that every program and policy in the agency take into account the effect of women on the economies of the countries receiving AID assistance. In the past, little statistical information has been gathered concerning the impact of women's activities on the foreign markets; AID is expanding its research to include the women component. AID is interested in receiving proposals from investigators who have related research experience. The first efforts of the program will probably be aimed at identifying omissions in existing AID programs. Deadline: none. For further information, contact:

Ms. Nira Long, Coordinator
Women in Development
Department of State
Agency for International Development
Room 5758
Washington, DC 20523

* * *

National Institute of Environmental Health Sciences Announces a Health Research Program whose projects are related to energy production and conservation. Objectives are to: 1) determine the qualitative and quantitative effects of energy-related hazardous agents on human health, from resource recovery and processing to energy utilization and conservation, and 2) elucidate the basic mechanisms of the observed effects. Deadlines: June 1 and October 1. For further information, contact: Dr. Robert G. Owens, Extramural Programs, National Institute of Environmental Health Sciences, National Institute of Health, Post Office Box 12233, Research Triangle Park, North Carolina, 27709.

* * *