



Volume 26, Number 9

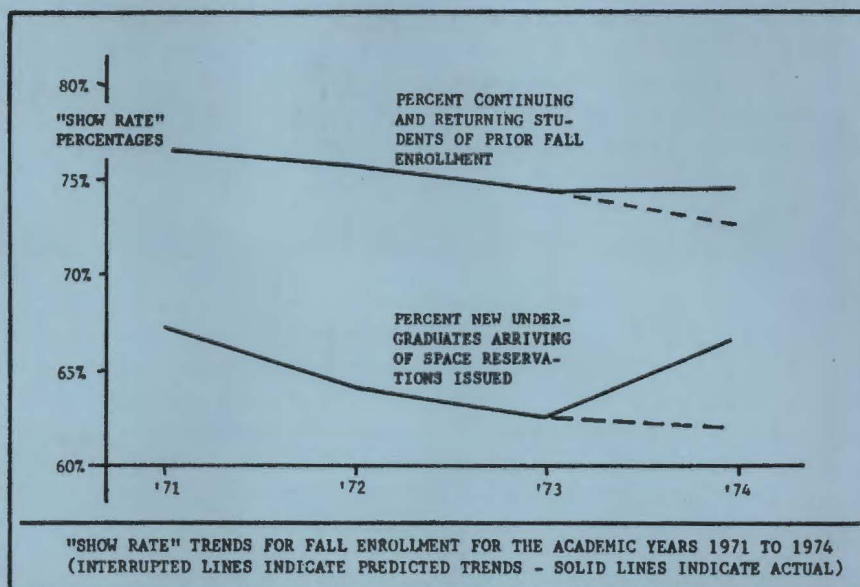
October 8, 1974

★ 10.5% MORE STUDENTS AT POLY THIS YEAR

A higher than expected "show rate" and more continuing students than expected are being credited with the 10.5 percent increase in students enrolled, according to a report from the university's Institutional Research Office.

Lowell H. Dunigan (Director, Institutional Research) said

a total of 14,488 students signed up for Fall Quarter classes during regular registration Sept. 19-20. That number is 1,375 more than the 13,115 who enrolled last year.



Dunigan, who has been studying enrollment trends at Cal Poly since 1961, said two-thirds of the prospective new students who had applied and been given space reservations actually enrolled for Fall Quarter classes. The number of continuing students equalled three-quarters of last fall's enrollment. Dunigan added that trends developing over the past three years had indicated a decline in both the percentage of continuing students and the percentage of new students who would actually show up to register, but both these trends were reversed at registration for Fall 1974.

(Continued on page 2)

★ CHANCELLOR'S OFFICE APPROVES \$230,000 IN BUDGET INCREASES

President Robert E. Kennedy has announced that efforts to obtain a budget revision reflecting the Fall Quarter enrollment increase have been successful. His documentation of the enrollment increase was approved by Executive Vice-Chancellor Harry Brakebill, who said Cal Poly will receive \$170,000 in advance of the budget revision. Such an advance usually is allowed only after the Fall Quarter census day, about Nov. 1. An additional allocation of some \$62,000 has been requested as a result of the collection of materials and services (M&S) fees from students who enrolled in excess of budgeted numbers.

(Continued on page 2)

★ JOHN HOLLEY DEAD

Private graveside services will be held this week for John L. Holley, who died on Saturday (Oct. 5). Holley, 26, was a child development major and a senior. He was president of the Associated Students, Inc. of Cal Poly during 1973-74 and had just begun serving a term as student affairs council representative from the School of Human Development and Education. The son of Mr. and Mrs. F. Jerald Holley of San Luis Obispo, he was a graduate of San Luis Obispo Senior High School and had served in the U.S. Navy. Mr. Holley is Director, Admissions, Records, and Evaluations at Cal Poly, while Mrs. Holley is an administrative secretary at Cuesta College. A fund is being set up in John Holley's memory by the Associated Students, Inc. at Cal Poly.

○ ENROLLMENT UP 10.5 PERCENT AT CAL POLY . . . (Continued from page 1)

Included in the 14,488 students who registered on Sept. 19-20 are 3,632 freshmen, 2,568 sophomores, 3,515 juniors, 3,926 seniors, and 847 graduate students. Largest enrollment reported by the university's seven schools was that of the School of Agriculture and Natural Resources with 3,331. Other school totals were: School of Architecture and Environmental Design, 1,466; School of Business and Social Sciences, 1,899; School of Communicative Arts and Humanities, 1,143; School of Engineering and Technology, 2,386; School of Human Development and Education, 2,598; and School of Science and Mathematics, 1,665.

Among Cal Poly's 51 instructional departments, the Business Administration Department, with 1,249 students, is the largest, and the architecture program of the School of Architecture and Environmental Design has 1,006 students. Other departments reporting enrollments of more than 500 include Biological Sciences (764), Animal Science (735), Home Economics (709), Agricultural Management, (656), Electronic and Electrical Engineering (615), and Ornamental Horticulture (605).

○ \$230,000 BUDGET INCREASE . . . (Continued from page 1)

Dr. Kennedy said the reimbursible excess will be further evaluated after Nov. 1 and could conceivably lead to an entitlement of additional funds. He said the granting of the budget revision in advance by the Chancellor's Office is unusual. The annual budget usually is revised, if necessary to reflect actual differences from earlier projections; this generally occurs following the Fall Quarter census date, after the period for adding or dropping classes has been completed.

Cal Poly submitted three charts showing different methods of computing the projected annual full time equivalent enrollment; all resulted in about 13,500 students. Allowing for the 200 FTE margin (which is recognized system-wide as not justifying additional funds) Cal Poly should be credited for a reimbursible excess of 300 FTE. Funding at \$850 per FTE will provide for the Winter and Spring Quarters. President Kennedy said the funds will be used for faculty positions in Winter and Spring and for technical, clerical, and student assistants, operating expense, and fee-supported student services.

The budget revision will be allocated among those instructional departments with significant FTE excesses according to registration day data.

★ MARRIED STUDENT HOUSING CONCEPT REVIVED



The development of married student housing, a project that was sidetracked by financing problems three years ago, is back in the master plan for campus development at Cal Poly. The prospect of on-campus housing for married students and their families was renewed last week when Cal Poly's Campus Planning Committee asked university's consulting architect Wallace W. Arendt, AIA, of Arendt, Mosher, Grant, in Santa Barbara, to consider a campus site near the corner of Grand Ave. and Slack St. for future development.

An acute shortage of student housing in the surrounding community prompted the committee action at its meeting Tuesday (Oct. 1). President Robert E. Kennedy said he has been greatly disappointed by the lack of interest in private construction to serve married students' needs and hopes the university's new master plan proposals will lead to a better housing situation for future married students.

The most recent plans for on-campus housing for married students were for facilities to be developed by private interests on 35 acres of land leased from the university. Plans were dropped in 1971 when money for housing developments became hard to locate and the developers withdrew. The plan was abandoned at a time when many students seemed to be more interested in living off-campus than in university housing. Student housing being built at the time and since by private developers has been primarily intended for single students. The Campus Planning Committee was also asked to review possible campus locations for mobile home sites or other types of married student housing which might be considered.

★ HOUSING SURVEY PLANNED BY UNIVERSITY AND CITY

Cal Poly is cooperating with the City of San Luis Obispo to develop a revised student housing element for the city's general plan. The current housing situation in San Luis Obispo is being studied in order to determine housing preferences of Cal Poly students and faculty. The university will assist city planning staff members in gathering housing data and has provided statistical services. A statistical random sample developed by Leon A. Maksoudian (Computer Science and Statistics) has been used to identify persons asked to cooperate in the study.

The random sample of some 700 Cal Poly students, faculty, and staff will be asked to complete one of three questionnaires: one directed to faculty and staff members, another for single students, and a third to be filled out by married students. It is hoped that this survey will establish relative preferences in selecting housing, but it will also determine to what extent these preferences are currently being satisfied.

Once the data from the survey has been evaluated and the current housing problems have been identified, the City Planning Department will take action toward resolving the existing housing problems and will seek ways to avoid such problems in the future. The survey is under the direction of Robert Strong, director of planning and building for the City of San Luis Obispo. All questionnaires completed will be tabulated statistically and individual responses will be confidential, Strong noted. Questionnaires are scheduled to be mailed Oct. 11 to the random sample and may be returned by permit return envelope or turned in at the Cal Poly Housing Office in Tenaya Hall.

★ WALLACE APPOINTED EOP DIRECTOR



W. Carl Wallace, co-director of the Educational Opportunity Program at Cal Poly since January, 1970, has been named to direct the program. Everett M. Chandler (Dean of Students) said Wallace was named EOP director on the unanimous recommendation of a selection committee including minority representatives. The appointment became effective on Sept. 24.

Wallace joined the Cal Poly staff in 1970 as assistant director at a time when only 38 students were registered in the program. Since November, 1970 he served as co-director, first with Richard Martinez, who later left Cal Poly to pursue graduate studies, and subsequently with Oscar Quezada and Ernest Padilla, both of whom also subsequently left Cal Poly to pursue graduate studies. Wallace is a native of Richmond. A graduate of Cal Poly, from which he received his Bachelor of Science Degree in social sciences, he also attended Oakland City College; Contra Costa College in El Cerrito; California State University, Fresno; and California State University, Hayward.

The new director of EOP, who completed his Master of Arts in Education Degree studies in guidance and counseling at Cal Poly in 1972, is presently a graduate student and candidate for the Doctor of Philosophy Degree at University of California, Santa Barbara. Wallace joined the California Youth Authority staff at Paso Robles School for Boys in 1963 and served in several different capacities over the next six years. Prior to that time the new director of EOP at Cal Poly worked for the City of Richmond Recreation Department.

Dean Chandler, who has supervised the co-directors while carrying the additional designation of EOP director, said Wallace will immediately begin recruitment of an associate director to maintain the level of staffing for the program, which now serves over 600 students.

★ KENNEDY RE-ELECTED TO COUNCIL HEAD

President Robert E. Kennedy has been elected to a new one-year term as chairman of the Council of Presidents of the California State University and Colleges. Kennedy's re-election to the important post came during a meeting of the council held Sept. 9-10 at California State University, Hayward. The council of presidents, which consists of the presidents of the 19 campuses of The California State University and Colleges system, meets monthly to consider matters of mutual interest and to make recommendations to the system's trustees and chancellor, Dr. Glenn S. Dumke.

★ EXTENSION COURSE PROPOSALS DUE OCTOBER 18

Proposals for courses to be offered during the Winter Quarter by Cal Poly Extension are due on or before Friday (Oct. 18) according to Don M. Morris (Associate Dean, Continuing Education). Dr. Morris said such proposals should be prepared on the "Extension Assignment Request for Winter 1975," approved by the appropriate department head and school dean, and sent to the Continuing Education Office, Adm. 314, by the due date. Copies of the request forms have been distributed to all department heads and faculty members through campus mail. Additional copies of the form may be obtained by contacting the Continuing Education office at Ext. 2053.

● STUDENT ACTIVITIES TO RECEIVE STATE FUNDS



Instructionally-related student activities programs at Cal Poly, will receive support from state funds under Assembly Bill 3116, which Governor Ronald Reagan signed into law on Friday (Sept. 27). The bill provides an appropriation of \$2.6 million to help the 19-campus California State University and Colleges system meet the costs of activities programs for which academic credit is given and which provide career-related learning experiences.

Support for Governor Reagan's signing of the measure came from through-out the state but was led by President Robert E. Kennedy, who is chairman of the Council of Presidents of The California State University and Colleges. Others providing strong support for AB 3116 included the governor's educational advisor, Harold O. Wilson, President James W. Cleary of California State University, Northridge and President James Bond of California State University, Sacramento.

President Kennedy said the council's support of the bill was prompted by the need for stability and continuity for instructional programs, which had become dependent on student government financing, and by the effect of inflation on student fees which have been fixed at 1951 levels.

Everett M. Chandler (Dean of Students) said Cal Poly programs that will tentatively receive support from the university's share of the \$2.6 million appropriation include agricultural judging, athletics, drama, forensics, music, and publications. Dr. Chandler said he will meet with the administrative and instructional personnel concerned with these programs to discuss effects of the new law.

Dr. Kennedy said a committee is being formed on a statewide level to recommend procedures for the actual distribution of the \$2.6 million among the 19 CSUC campuses. He pointed out that levels of program activity, number of students participating, and levels of support previously received from student governments vary greatly from campus to campus. Pending recommendations of the committee, he declined to estimate how much the Cal Poly programs will receive as a result of AB 3116, or when the funding will take effect.

★ LUMP-SUM SALARY INCREASE PAYMENT FOR SUPPORT STAFF

A memorandum has been received from the Chancellor's Office, The California State University and Colleges, stating:

"Federal attorneys sought an injunction on Oct. 3, 1974 to block the granting in one salary payment of an amount equivalent to the increase denied for the period of July 1, 1973 to April 30, 1974 as the result of action taken by the Federal Cost of Living Council. Although this injunction was not granted, the State Attorney General was obliged to agree that no salary increase payment would be made before Oct. 22, 1974 even though it was generally anticipated that payment would be made prior to that date. However, there are still further avenues of opposing or delaying payment open to the Federal Government. It would be appreciated, therefore, if you would advise the support staff personnel on your campus of this action and they should not expect any lump-sum payment prior to Oct. 22, 1974."

Support staff personnel will be kept informed of further developments.

★ AUTOHARP WORKSHOP ANNOUNCED



The woman who has become the leading exponent of the autoharp as an instrument for classroom music will be the guest clinician for a workshop for music teachers to be held on Friday and Saturday (Oct. 11-12) at Cal Poly. Meg Peterson, the author of several books and musical works for the autoharp, will present the workshop in Davidson Music Center 218. The opening session will be from 7 to 9:30 pm on Friday, and Saturday sessions will be from 9 am to noon and 1 to 4 pm.

Mrs. Peterson is education director for Oscar Schmidt, International, the firm which makes autoharps. Her travels and experience in conducting workshops such as the one being planned at Cal Poly have resulted in her writing a teacher's guide to use of the autoharp, a two-volume method book on ways to play the autoharp, three songbooks for the autoharp, and several other music books.

George C. Beatie (Music) said one unit of professional credit will be available to teachers and others in education who attend the two-day program. The workshop is being sponsored by the Cal Poly Music Department in co-operation with the San Luis Coastal Unified School District and the San Luis Obispo Office of Education.

★ TWO POLY STUDENTS NAMED PEACE CORPS/VISTA REPRESENTATIVES

With the naming of two Cal Poly students as campus representatives, the Peace Corps and VISTA have opened a combined Volunteer recruitment effort which will seek to enlist the skills of applicants from the San Luis Obispo campus and Central Coast communities. Tom Jacobs and Don Marquardt, both former Peace Corps Volunteers, offer help with applications and information at the International Education office from 3 pm to 4 pm each weekday and from noon to 1 pm on Tuesdays and Thursdays.

Cal Poly Dec. graduates, majoring in agricultural education, animal science and crop science can be placed in international agriculture assignments beginning after Jan. 1 in at least 51 developing Peace Corps host nations. The same principle applies to industrial arts, architecture, city/regional planning and home economics.

Problems of rapid urban and industrial growth which confront Peace Corps architects and city planners in Costa Rica, Iran or Tunisia often parallel the situations encountered by VISTA counterparts in many urban areas of the United States. VISTA Volunteers work to alleviate the causes of poverty by mobilizing local citizens in helping themselves. Cal Poly seniors majoring in business administration, home economics, child development, counseling and architecture are being sought to fill 1975 VISTA jobs in over 700 low-income communities in all fifty States.

Comparing the two voluntary service programs which are now merged under the auspices of ACTION, a federal umbrella agency, Marquardt and Jacobs said that Peace Corps and VISTA provide Volunteers with living allowances, free medical care and travel, plus a monthly stipend. Following the two year Peace Corps assignment each Volunteer receives a sum of approximately \$2,000. VISTA workers serve for one year within the United States. Marquardt and Jacobs are available for classroom presentations.

★ ARLO GUTHRIE WILL APPEAR AT POLY

Arlo Guthrie, veteran recording artist and popular campus performer, will demonstrate his talents in concert at Cal Poly on Oct. 20. Scheduled to begin at 7 pm in the gymnasium of the Physical Education Building, the concert promises to be an occasion for everyone to hear for themselves the gutsy, down-home style that has made Arlo a household word among music listeners.

Tickets are available at the Information Desk of the University Union and are priced at \$3 unreserved and \$4 reserved for Cal Poly students. General public admission is \$4 for unreserved seats and \$5 for reserved.

Although he didn't begin his professional career until 1966, Arlo Guthrie has been singing and performing all his life, from the coffee house circuit to major concerts everywhere. In this manner, he has carried on family traditions established by his famed father, Woody Guthrie. The song, "Alice's Restaurant," became Arlo's stepping stone into the national limelight, and when "Alice's Restaurant," became a motion picture, he was on his way. The title song later became part of his first album, which turned out to be an instant smash success.

Several other bestseller LPs, in addition to a special guest appearance on the "Woodstock" record set, have been released since then. More recently, Arlo's newest record, "The City of New Orleans," has topped nationwide bestseller lists and further enhances his reputation for telling true-to-life stories in the form of hard-driving, dynamic songs. Television guest appearances for Arlo include the Johnny Cash Show, Dick Cavett, Johnny Carson, and Today Show.

★ ARTS/CRAFTS AND HOBBIES BOOK SALE AT BOOKSTORE

Faculty and staff members are invited to view over 100 special books on Arts/Crafts and Hobbies such as origami, batik, doll making, painting, découpage, macramé, which will be on sale at special reduced prices at El Corral Bookstore from Monday (Oct. 7) through Friday (Oct. 25). Mary Lee Green (Manager, El Corral) said that this book sale is the first of the many special-subject book sales planned for the year. Also at El Corral, Tony Sopranzi, a Junior in Electronic Engineering will be exhibiting his photographs at the mini art gallery thru Oct. 11.

★ THOROUGHbred SALES SUPPORT HORSE PROGRAM

Two Thoroughbreds from the horse program at Cal Poly were sold at the Summer Yearling Sale of the California Thoroughbred Breeders Association last week for a total of \$15,200. William R. Gibford (Animal Science) announces the sale of a filly to Gene Cashman of Chicago, Ill., for \$9,700 and of a colt to John Diamond of the British Columbia Jockey Club for \$5,500.

Gibford points out the university maintains the horse program to augment instruction in horse management. Students maintain the horses and prepare them for sales. The sale of offspring of the mares supports the cost of the horse program. Nearly 500 students annually participate in some phase of the horse program.

★ ENGINEERING ARTICULATION CONFERENCE PLANNED

Seventy-five community college counselors, teachers, and administrators from throughout California are expected to take part in a day-long conference being planned for Friday (Oct. 11) at Cal Poly. The day-long program, which will take place in the University Union, has been planned to help the community college educators articulate their programs in engineering with those of Cal Poly's School of Engineering and Technology.

Scheduled during the morning are welcoming remarks by Hazel Jones (Vice President for Academic Affairs) and Robert Valpey (Dean of the School of Engineering and Technology). Also planned before lunch are information and discussion sessions on such subjects as admissions, transfer credit, changes in degree programs, and placement programs.

Lawrence H. Nelson (Mechanical Engineering) who is coordinating arrangements for the articulation conference, said individual meetings and tours of the various departments of the School of Engineering and Technology will be held during the afternoon.

★ CARPOOL PROGRAM UNDER WAY AGAIN

A campus carpooling program was initiated this year to assist Cal Poly employees within San Luis Obispo County with access to carpool transportation to campus. Employees desiring to participate may do so by completing a carpool participation questionnaire available in the Personnel Office, Adm. 110 or by calling Milton Piuma (Staff Personnel Officer) or Mary Smith (Personnel Assistant) at Ext. 2236. Present participants or enrollees need to submit a new form only if they have had a change of address, name, or work schedule. Any new or revised forms should be submitted to the Personnel Office by Oct. 14.

A computerized printout will be furnished to each participant on approximately Oct. 21, which will include the names of persons in the same designated areas for those interested in carpooling. As in the past, participants listed are keyed to a plus or minus one hour difference in arrival or departure time for at least three of the five specified work days. Employees forming a car pool may obtain a single floating parking permit for \$10.00 for the first vehicle, and \$1.00 for each additional participating vehicle. Pool permits are valid in any "S" (Students) or "E" (Staff) designated lots. Further inquiries regarding this matter may be directed to Milton Piuma.

★ CARE COMPETITION ANNOUNCED

The University Research Committee announces a change in the CARE grant program for this academic year. CARE stands for Creative Activity and Research Effort, and is open to any faculty member on a competitive basis. Grants are made for research in any field-for scholarly or creative activity (but normally not for curriculum development or travel to professional meetings).

Owing to a reduced budget this year, there will be only one competition instead of one each quarter. The deadline is January 31, 1975. Grants will be made no later than May 30, 1975. Faculty should not plan to begin their programs before the summer. Application forms may be obtained from Howard Boroughs (Coordinator, Research Development) in Adm. 317, at Ext. 2982.

★ WHO . . . WHAT . . . WHEN . . . WHERE ? ? ?

Barbara P. Weber (Home Economics) has been accepted for membership on the American Society for Testing and Materials Committee F-15. This ASTM committee is concerned with consumer product safety. Approximately 250 members throughout the United States are engaged in a series of evaluative studies.

Mary E. Averill Bernstein (Biological Sciences) has just received word from the dean of the Graduate School of the University of Oregon that she has satisfactorily completed all requirements for the Doctor of Philosophy degree in Biology. Dr. Bernstein is a new member of the Biological Sciences Department faculty, beginning her assignment Fall Quarter 1974.

Sham S. Luthra (Computer Science and Statistics) has received word from the Operations Research Division of the University of Minnesota that he has completed all requirements for the Doctor of Philosophy degree in Operations Research. Dr. Luthra has been a member of the Computer Science and Statistics Department faculty since 1972.

Donald M. Morris (Associate Dean, Continuing Education) attended the 1974 conference of the Western Association of Summer Session Administrators, Oct. 2-4. He spoke on the subject, "Innovation and Renewal During the Steady State," and was discussion leader of a group discussing "Identification of New Audiences."

H. Clyde Hostetter (Director, Communications/Media Productions) spent two months this past summer as a consultant in the Office of Communications, U.S. Department of Agriculture, in Washington. Hostetter reviewed USDA educational programs involving the nation's schools, and made recommendations for broadening them in several areas. USDA sound filmstrips are being distributed nationally by Communications/Media Productions at Cal Poly, and one of its divisions, Vocational Education Productions.

Tomas Roybal (Education) attended the meeting of the National Advisory Council on Bilingual Education held in Washington, Sept. 26-27. The council is charged with development of guidelines for allocating the \$75 million provided by HR69, recently signed by President Ford, to bilingual education.

★ SUPPORT STAFF VACANCIES LISTED

Vacant support staff positions have been announced by S. Milton Piuma (Staff Personnel Officer). Descriptions of the positions and other vacancies are posted outside the Personnel Office, Adm. 110, ext. 2236. Contact the Personnel Office to obtain an application. Cal Poly is an Affirmative Action Employer. The positions are:

Clerical Assistant II-A (\$561-\$682), Admissions and Records Offices, Student Affairs. Duties and responsibilities include working in University Admissions Office; processing applications for admission of students; working in University Records Office; assisting with registration; preparing of grades. Requirements: High school graduate with one year office experience, General Clerical Test administered to all clerical applicants, type 45 wpm. Closing date: October 15, 1974.

Student Personnel Technician (\$809-\$983), Financial Aids Office, Student Affairs Division. Duties and responsibilities include maintaining detailed records on the commitment, disbursement, and general level of all financial aid funds — federal, state, and institutional; monitoring student and employer utilization of College Work-Study Program funds; monitoring the coordination of all on-campus student resources; preparing related statistical reports as required. Requirements: High school graduate (bachelors degree preferred), three years of office experience in an accredited college or university. Closing date: October 22, 1974.

★ Typewritten copy intended for the next issue of Cal Poly Report must be received prior to 12 noon on Friday (Oct. 11) in the Public Affairs Office, Adm. 210. Copy intended for Cal Poly Dateline is due in the Public Affairs Office by 12 noon on Tuesday (Oct. 8).

★ PLANT SALE BY O H STUDENTS

Students of the Ornamental Horticulture department at Cal Poly will offer landscaping plants on a two for the price of one basis on Saturday (Oct. 12). The sale will be held at the OH unit on Campus Way from 8 am to 5 pm. In addition to landscaping ornamentals, tropicals, fall flower arrangements and other plant products will be sale priced. All of the ornamentals offered for sale are products of the student enterprise program of the Cal Poly Foundation.

★ RODEO TEAMS BRING HOME PRIZES

The Cal Poly Men's Rodeo team were the winners in the first National Intercollegiate Rodeo Association western region meet of the season, held at Los Banos on Saturday and Sunday (Oct. 5-6). The Cal Poly team scored 568 points to Fresno's 427, with eight teams competing. Lee Rosser of the Cal Poly team won the saddle bronc riding; John McDonald, Cal Poly, the bull riding; Tres Moore, Cal Poly, steer wrestling. The Cal Poly Women's team placed second in the meet.

★ PERS REPRESENTATIVE TO VISIT CAMPUS

A Public Employees Retirement System Representative will be on campus Dec. 3, 4, and 5 for visits with employees anticipating retirement. Employees wishing an appointment should phone the Personnel Office, Ext. 2236, before October 31.

★ VISTA GRANDE TO FEATURE CHINESE LUNCH

Vista Grande Restaurant will feature a Chinese lunch on Thursday (Oct. 10). John Lee (Director, Food Services) announced that the Chinese luncheon menu would be: Cantonese beef, Chinese fried rice, snow pea pods, almond cookies and a beverage. The price of the luncheon is \$1.85 and it will be served between 11 am and 2 pm.

★ ELECTION OF UNIVERSITY CLUB PRESIDENT

Robert J. Rodin (Biological Sciences) has resigned as University Club president this year on the advice of his physician. A new president will be elected at the University Club luncheon meeting on Thursday (Oct. 10). At that time, nominations will be accepted from the floor.

★ THESIS BINDING FEE GOES UP

James R. Landreth (Director of Business Affairs) announced that because of increased costs the thesis binding fee will be increased from \$5 to \$7.50, effective Oct. 14. Students who pay the fee to the university cashier beginning on Monday (Oct. 14) will be required to pay the new higher amount.

encouraging notes

October 8, 1974

Geothermal Energy. The Atomic Energy Commission, the Department of the Interior, and the National Science Foundation are coordinating their energy research efforts under the National Geothermal Energy Research Program. Under this program, NSF intends to support research during FY 75 through FY 79 to establish the technical, economic, and environmental feasibility of the utilization of geothermal resources for electric power production and other energy applications. The program goal is to stimulate early commercial utilization of geothermal sources. Specific objectives of the Federal program include: 1) develop advanced technologies for the exploration and assessment of commercial resources of geothermal energy; 2) provide the technological advances necessary to improve the economic feasibility of power production from geothermal resources; 3) establish experimental research facilities at geothermal resource sites to test advanced technologies for power production and other applications; and 4) identify policy options for dealing with environmental, legal, and institutional problems related to geothermal energy utilization. Unsolicited proposals are encouraged. Details regarding the preparation of proposals are published in "Guidelines for Preparation of Unsolicited Proposals to Research Applied to National Needs," which is available in the Research Development Office. For further information about the Geothermal Energy Program:

Office of Programs and Resources
Research Applications Directorate
National Science Foundation
1800 G Street, N.W.
Washington, D.C. 20550

* * *

Water Resources and Utilization. The Office of Water Research and Technology (WRT), Department of the Interior, is seeking proposals for experimental, developmental, or research work in the field of water resources during the fiscal year 1976, beginning July 1, 1975. Proposals may be submitted at any time, but they must be no later than January 10, 1975, to be considered for funding in the first quarter of FY 76. Objectives of the program include: improving water resources planning and management, solving energy-related water problems, promotion of water use efficiency, and protection of the environment. OWRT Procedures Memorandum No. 74-2 giving detailed instructions and forms for the submission of proposals for consideration for funding under the Title II provisions of the Water Resources Research Act may be obtained from the Director, Office of Water Research and Technology, U.S. Department of the Interior, Washington, D.C. 20240.

* * *

Graduate Fellowships. Information about graduate fellowships for Mexican Americans, Native Americans, and Puerto Ricans may be obtained from Educational Testing Service, Box 200, Berkeley, CA 94704. For information about graduate fellowships for Black Americans; National Fellowships Fund, Suite 484, 795 Peachtree Street, N.E., Atlanta, Georgia 30308.

* * *

Deadlines for Applications

FELLOWSHIPS AND GRANTS OF THE SSRC

Research Training Fellowships December 2, 1974

FELLOWSHIPS AND GRANTS SPONSORED JOINTLY BY THE SSRC AND ACLS AND ADMINISTERED BY THE SSRC

Latin America and the Caribbean Area

Fellowships

United States	November 1, 1974
United Kingdom	January 11, 1975
Canada	January 15, 1975

Inter-American Research Training Seminars January 15, 1975

Inter-American Research Training Seminars:
Submission of Proposals for 1976 March 1, 1975

Collaborative Research Training Projects:
Submission of Proposals for 1976 March 1, 1975

Grants for Research December 2, 1974

Collaborative Research Grants December 2, 1974

Group Research Projects December 2, 1974

Conference Support December 2, 1974

All other foreign areas

Fellowships	November 1, 1974
Grants for Research	December 2, 1974

FELLOWSHIPS AND GRANTS SPONSORED JOINTLY BY THE SSRC AND ACLS AND ADMINISTERED BY THE ACLS

East Europe

Grants for Research December 31, 1974

Travel Grants February 15, 1975

Grants for Language Study February 3, 1975

South Asia

Grants for Research December 2, 1974

Soviet Union

Grants for Research December 31, 1974

languages) and in the humanistic aspects of science and business. Information may be secured from Mabelle McLeod Lewis Memorial Fund, Box 3730, Stanford, CA 94305.

* * *

Programs in the Humanities and Social Sciences. The Research Development Office has recently received a brochure from the University Wisconsin which lists a number of sources for grants and fellowships available for research in the humanities and in the social sciences. Each entry includes fields, requisites, period of grant, stipend, and deadline. It's a brochure worth reviewing.

Social Science Fellowships and Grants.

The Social Science Research Council and the American Council of Learned Societies, either individually or jointly, sponsor various research programs through individual grants and fellowships. The programs and deadlines are listed on the left. The general procedure is to submit tentative information well in advance of the deadline; if the proposal appears to be appropriate to the program, application forms will be sent. A descriptive booklet about these grants and fellowships is available in Administration 317 or may be secured from SSRC, Fellowships and Grants, 605 Third Avenue, New York, N.Y. 10016.

* * *

NSF Fellowships. Two fellowship programs have deadlines in the near future. Applications must be made on the forms provided by The Division of Higher Education, National Science Foundation, 1800 F Street, N.W., Washington, D.C. 20550. 1) NATO Postdoctoral Fellowships in Science: deadline is October 28. 2) NATO Senior Fellowships in Science: deadline is November 20. Brief information is available in the Research Development Office in NSF 75-13 and NSF 75-14.

* * *

NSF Graduate Fellowships. Available to students who by Fall 1975 will have completed one full or part-time year of graduate work. Deadline is December 2, 1974. NSF 75-12.

* * *

Grants in Aid of Scholarly Work. The Mabelle McLeod Lewis Memorial Fund provides aid for study and research in the traditional humanities (literature, history, philosophy, and