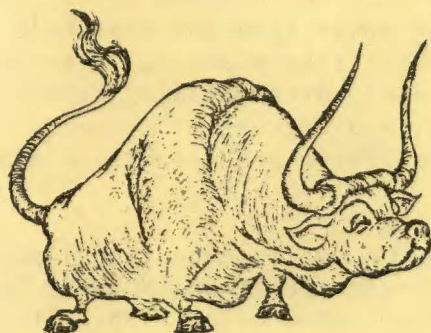




Volume 25, Number 40

May 28, 1974



BEEF EVALUATION CENTERCOMING

» A Santa Barbara architectural firm has been named project architect for development of plans for the beef cattle evaluation center at Cal Poly. Harry Harmon, vice chancellor, the California State University and Colleges, Los Angeles, announced the appointment of Arendt/Mosher/Grant as the project architect. E. Douglas Gerard (Executive Dean) says the appointment moves Cal Poly one step forward in the development of the evaluation center, first of its kind in California. The center is being financed by contributions from the California beef cattle industry.

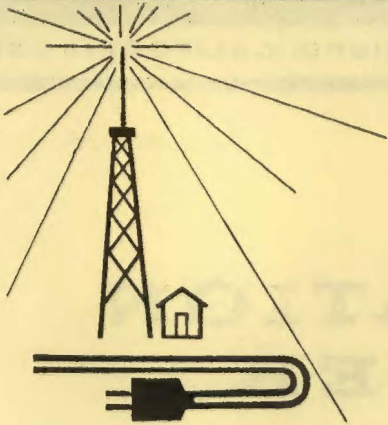
Gerard says design plans for the center should be completed in 60 days and a contract for construction of the central building - a pole barn type structure - could be let by late summer. Completion of the project is expected during the fall quarter. The center will permit progeny evaluations on from 50 to 200 beef cattle.

J. Corder Gibson (Dean, School of Agriculture and Natural Resources) says the center will assist cattlemen in California and in the west in keeping pace with the rest of the nation in identification of superior beef cattle genetic material. Gibson continues, "The center will accept beef cattle from producers and conduct individual performance and progeny testing programs. Testing will be under the direction and supervision of qualified and knowledgeable faculty assisted by students." He explained that the center will operate on a non-profit basis with the costs of operation borne by the owners of the cattle on test.

President Robert E. Kennedy says the facility is being made possible by gifts totaling \$93,250 from people in the beef cattle industry. The principal donor is the William Randolph Hearst Foundation, which made \$85,000 available for the project. Other donors are Mrs. Katherine H. Haley, Ventura, Bank of America Foundation, Camp-Mebane Cattle Co., California Shorthorn Association, the Crocker Ranch, Tannehill Cattle Co., California Charolais Association, American International Charolais Association, Sinton and Brown Co. of Santa Maria and the Tejon Co.

The center, which includes the pole barn, surrounding corrals, troughs, squeeze chute, scales, and offices, will be erected through a combination of contract, student labor, and class experience. When completed the facility, built entirely by non-state funds, becomes the property of the university. The center will be operated by the Cal Poly Foundation, a non-profit organization which operates residence halls, food services, and the instructionally-related agricultural enterprises at the university.

» RADIO STATION INCREASES POWER



Wednesday (May 29) will be a red-letter day for Radio Station KCPR-FM, the educational radio station operated by students in the Journalism Department. That's the day the station, which broadcasts at 91.3 Mhz on the FM dial, will increase its antenna power from 10 to 2,000 watts. A brief ceremony, during which the power from the station's transmitter will be increased, will take place at 11 am in the station's studios in the Graphic Arts Building before a small gathering of city, county, and university leaders, and representatives of local area radio and television stations.

A public radio station which specializes in educational programs, fine music, and public service programs, KCPR-FM has operated under authorization of the Federal Communications Commission since 1968. It features 24-hour service each day during the fall, winter and spring months, and 18-hour service during the summer months. President Robert E. Kennedy, to whom KCPR-FM is licensed, pointed out that it is operated as an important adjunct to course work taken by journalism students.

John R. Healey (Head, Journalism) and Ed Zuchelli (Journalism), faculty advisor, emphasized that KCPR-FM is dependent on public donations and university funds for its operating monies. They acknowledged equipment donations and technical assistance from Sparta Electronics, Jampro Antenna Company, Eimas Electronics, and Pacific Telephone have helped make the increase to 2,000 watts possible.

The ceremony, during which Dale W. Andrews (Executive Vice President) will switch on the new transmitter, will be followed by a special program tracing the history of the campus station and the growing importance of broadcasting in the campus community.

» DEPARTMENT HEAD EVALUATION GUIDELINES ISSUED

Evaluation of department heads by faculty has been under consideration since 1971 when the Academic Senate recommended that a procedure be established to evaluate department head performance on an annual basis. Following extensive campus consultation, a set of guidelines was developed by the Academic Senate and forwarded to the president in April, 1973. The guidelines were submitted to several groups previously consulted, including the Academic Council and the Instructional Department Heads Council, for review and comment prior to editing and promulgation. The recently issued Administrative Bulletin 74-4 (Interim Guidelines for Faculty Evaluation of Department Heads) follows closely the guidelines developed by the Academic Senate.

Copies of AB 74-4 may be consulted in departmental issues of Campus Administrative Manual or in the faculty reading room in the Library.

» MAY SALARY WARRANTS WILL BE AVAILABLE AT 4 PM ON THURSDAY

May salary warrants for faculty and staff of the university will be available at 4 pm on Thursday (May 30). Warrants batched by department may be picked up at the Cashier's Office, Adm. 131-E, and those picked up on an individual basis may be picked up in the Business Affairs Division Office, Adm. 114, after that time.

► CAL POLY FOUNDATION NAMES LEADERS



Directors and officers of the Cal Poly Foundation were announced by Al Amaral (Executive Director, Foundation) following the regular annual meeting of the board held on campus Monday (May 20). Re-elected to four-year terms as members of the board of directors were Everett M. Chandler (Dean of Students) and James M. McGrath (Head, Engineering Technology).

Other directors of the Foundation are President Robert E. Kennedy; Dale W. Andrews (Executive Vice President); J. Cordner Gibson (Dean, School of Agriculture and Natural Resources); Eugene Rittenhouse (Director, Placement); and Harold O. Wilson (Educational Advisor to Governor Ronald Reagan). Elected to one-year terms as officers of the Foundation were: Dr. Kennedy, President of the board; Dr. Andrews, vice president of the board; and Dr. Chandler, secretary-treasurer.

The Cal Poly Foundation is a non-profit auxiliary organization of the university. Established in 1940, the foundation is the oldest such auxiliary organization in The California State University and Colleges system. The foundation has the responsibility for financing and recording the project operations, operating and managing the cafeterias and bookstore, and providing other services to students, staff and faculty. It operates under lease agreements made with the Trustees of The California State University and Colleges and approved by the State Department of Finance.

► PLASTICS SYMPOSIUM IS STUDENT ORGANIZED

"Plastics Age, the New Industrial Revolution" will be the theme for a free one-day symposium on plastics which is scheduled for Thursday (May 30) at Cal Poly. The symposium is sponsored by the Cal Poly Industrial Technology Society and is open to anyone interested in plastics engineering, although it is specifically aimed at students majoring in architecture, engineering, and agriculture. Students involved in the planning of the program are members of the recently chartered Society of Plastics Engineers student chapter at Cal Poly, according to symposium advisor James Edwards of the university's Industrial Technology Department faculty.

» DISCOUNT CARDS AVAILABLE TO EMPLOYEES

With the approaching summer season in mind, university employees interested in obtaining discount cards to certain amusement areas are invited to contact the Personnel Office, Adm.-110, Ext. 2236. Discount cards available in the Southern California area include: Busch Gardens; Disneyland; Knott's Berry Farm; Lion Country Safari; Los Angeles Zoo; Magic Mountain; Movieland Wax Museum/Palace of Living Art/Japanese Village and Deer Park (Fun Seekers Club); Movie World; Queen Mary; San Diego Harbor Excursion; San Diego Zoo; Sea World; and Universal Studios.

Those cards available in the Northern California area include: Frontier Village; Ripley's Believe It or Not; San Francisco Bay Cruise; and Santa's Village. Discount cards are also available for Howard Johnson's Motor Lodges, Sheraton Hotels and Motor Inns, and the Hacienda Club in Las Vegas. Information regarding a discount plan for the purchase of tires is also available.

» CAL POLY REPORT AND DATELINE SUMMER SCHEDULE ANNOUNCED



Lachlan P. MacDonald (Director, Public Affairs) has announced that beginning with the June 4 issue, Cal Poly Report will take up its summer schedule of bi-weekly publication. The university newsletter will be published on: June 4 & 18; July 2, 16, & 30; August 13 & 27. A special issue will be published on September 13 to summarize summer news and provide announcements for the first week of Fall Quarter. It will be available on Monday (September 16) when faculty return to the campus.

Dateline, the bulletin of university and other campus events, will alternate with Cal Poly Report during the summer, publishing on alternate weeks. Dateline will appear on: June 13 & 27; July 11 & 25; August 8 & 22; and September 5. Regular scheduled publication will recommence on September 19.

Deadlines for the two publications remain the same. For Cal Poly Report, the deadline is 12 noon on the Friday preceding the Tuesday of publication. For Dateline, the deadline is 12 noon on the Tuesday preceding the Thursday of publication. Copy submitted for both publications should be double spaced and should bear the name and telephone extension of the person submitting the copy.

» MONDAY COFFEE HOUR WILL HONOR WOODWORTH

John A. Woodworth (Mathematics), who will retire in June after having been a member of the Cal Poly faculty for 25 years, will be honored during a coffee hour to be held Monday (June 3) between 2:30 pm and 4:30 pm in the Staff Dining Room. The many friends of Mr. Woodworth and his wife, Helen, are invited to attend the coffee hour and wish them well, according to an announcement from the Mathematics Department, which is hosting the event.

Woodworth started teaching in public schools in Nebraska in 1933. Moving to California he taught in the public schools of Baldwin Park and Salinas, taught pre-flight mathematics at the Santa Ana Army Air Base, worked at the University of California Radiation Laboratory and was a principal at Hopland Union High School before coming to Cal Poly in 1949.

» HOSTETTER WILL PARTICIPATE IN NATIONAL INSTITUTE OF EDUCATION CONFERENCE

The National Institute of Education has selected Clyde Hostetter (Director, Instructional Materials Program) to be one of 40 participants in a national conference that will make recommendations to NIE for the most effective ways to disseminate innovative educational ideas to local education agencies. The NIE is a recently-formed Federal agency with the responsibility for supervising research and dissemination in education at the national level. The four-day conference will be held in Los Angeles in mid-July.

Hostetter's selection reflects the University's success in the production and international distribution of audiovisual materials used in agriculture classes in all 50 states and approximately 30 foreign countries. Materials are developed with the assistance of Vocational Education Act funds allocated by the State Department of Education, and are sold on a non-profit basis through the Cal Poly Foundation department, Vocational Education Productions.

➤ MONTH OF MAY RINGS OUT WITH JAZZ



The full range of jazz music will be in the spotlight when four jazz bands combine their talents for the first jazz night concert at Cal Poly. Planned for 8 pm on Friday (May 31) in the Cal Poly Theatre, Jazz Night '74 will feature the University Jazz Band (Collegians), the Wailing Mothers Marching Orchestra, the Studio Band, and the Dixieland Band.

In contrast with the University Band, the Studio Band, and the Dixieland Band, which are all composed of members of the Cal Poly student body, the nine-piece Wailing Mothers Marching Orchestra is composed of members of the university faculty and band directors from schools in the local area. Its repertoire includes contemporary jazz arrangements written by two of its members, Bob Sennett (Transportation Engineering) and Graydon Williams (Music).

The Cal Poly Studio Band is an 18-piece ensemble which has gained a reputation for its fine renditions of such modern rock and contemporary jazz numbers as "Switch in Time" and "MacArthur Park." William V. Johnson, director of bands and a member of the music faculty at Cal Poly, is its director. The very latest arrangements, many of them the same as those written for and played by the bands of Thad Jones, Buddy Rich, and Woody Herman, are included in the repertoire of the 16-piece University Jazz Band, directed by Williams.

New Orleans jazz is the specialty of the Dixieland Band. Consisting of six members of the Cal Poly Symphonic Band, its program provides a light atmosphere gained through original comedy and buffoonery. General admission tickets for Jazz Night '74 are priced at 50 cents for students and \$1 for the public. They will be on sale at the Cal Poly Theatre box office prior to curtain time on May 31. The Cal Poly Music Department and Associated Students, Inc., are co-sponsors of the concert.

➤ PRESIDENT KENNEDY SPEAKER AT UNIVERSITY CLUB LUNCHEON

President Robert E. Kennedy will be the guest speaker when the Cal Poly University Club holds the final luncheon meeting of its 1973-74 program year. The lunch will start at 11:30 am on Thursday (June 6) in the Patio of the president's home. The cost of the buffet lunch (\$1.50) will be collected in the serving line. Faculty and staff are invited. Due to the limited space, reservations are required and can be made by calling Vi Hughes, Health Center, Ext. 2151 or Joan Stadt, Library, Ext. 2345 before the deadline of 5 pm, Monday (June 3).

➤ HAWAIIAN FOOD FEATURED AT VISTA GRANDE

Vista Grande Cafeteria will feature Hawaiian Food on Thursday (May 30) from 11 am to 1 pm, it was announced by John C. Lee (Director, Foundation Food Services). Special foods: Beef teriyaki served with pineapple, green pepper and onion garnish, fluffy rice, baked yams with pineapple, Waikiki spinach salad, aloha pie (coconut pie with gingersnap crust), and sesame rolls. All items may be purchased individually. Regular luncheon menu items will be available at a la carte prices. During lunchtime, from 11 am to 1 pm, there will be a demonstration of how to prepare beef teriyaki by Ponciano Tabelon (Catering Chef, Foundation Food Services).

» ART STUDENTS WILL SHOW WORKS IN LOS ANGELES

For the third consecutive year, students of Roger Bailey and Henry Wessels (both Art) have been invited to display their work in Design West '74. Design West is an art show, held annually in the California Museum of Science and Industry, featuring outstanding work from students in California colleges and universities. This year, students from Cal Poly's Art Department will display over thirty pieces of art in clay, wood, sterling silver and plastics. The show, which opened on May 18 will continue until June 19, admission is free. The Museum is located in Exposition Park, at 700 State Drive, Los Angeles.

» SHERIFF CONTENDERS WILL APPEAR

Candidates for the office of San Luis Obispo County sheriff will debate at Cal Poly on Thursday (May 30). The candidates will appear in the plaza of the University Union at 11 am. The forum-style debate is being sponsored by the campus California College Republicans organization. Admission will be free. Four of the six candidates in the race will be on hand for the debate, according to A. David Chan of the CCR. They are John P. Dagle; G.C. "Jerry" Pearce; Richard B. Perez, Sr.; and John H. Pierce. Gary G. Fowler and Gustin Galaviz will be unable to attend.

» HUMANITIES LECTURES END WITH TALK ON BACH

Eighteenth century social problems revealed in the music of Bach will be discussed by Ronald Ratcliffe (Music) on Thursday (May 30). The lecture, which will be given at 11 am in UU-220 will be free and the public is invited. Ratcliffe will talk about "Eighteenth Century Programmatic Music as a Reflection of the Times" as the last installment of the Arts and Humanities 1973-74 lecture series. He will discuss social problems of the 18th Century and will demonstrate how these problems are revealed in the works of Bach and his contemporaries.

» DEAN LOVETT RECEIVES NATIONAL AWARD

A former director of student health services at Cal Poly has received the highest honor ever awarded by the American College Health Association. Dr. E. Dean Lovett, now retired and living in Clearlake Oaks north of Santa Rosa, received the Edward Hitchcock Award in Recognition of his unique role in "the development of college and university health programs." The Hitchcock Award was presented to Dr. Lovett during the 52nd annual meeting of the national college health association last month in Dallas.

Dr. Lovett, who was director of health services at Cal Poly from 1951 to 1962, was cited for having been associated with each of the major challenges that have confronted the student health movement in the nation's colleges and universities. In 1966, he participated in the first ACHA evaluation team under what is now known as the consultation and certification program and, in 1969, he pioneered development of the first training program specifically designed for college and university health program directors.

» BONSAI WORK WILL BE DISPLAYED

The general public is invited to attend a special free Bonsai workshop and display to be held Saturday (June 1) from 10 am to 2 pm at the Ornamental Horticulture unit. This workshop will be sponsored by the beginning and advanced Bonsai classes of the Cal Poly Extension program. The classes will also be displaying more than 200 trees that they have trained during the past quarter. The instructor of the extension courses is Garth G. Hokanson (Ornamental Horticulture).

The public is invited to bring any untrained trees or plants or any Bonsai established trees that need additional training to the workshop. The Bonsai class students will be on hand to answer any questions and to assist everyone in the training techniques of Bonsai. Individuals may purchase plants and pots during the workshop as well.

» ACADEMIC SENATE MAIL BALLOT VOTING DECLARED INVALID

Bob Hooks (Chairman, Election Committee of the Academic Senate) has announced that the recent mail ballot vote to amend the constitution of the Academic Senate has been declared invalid. The voting should have been by secret ballot at the usual polling places. Another voting date will be set. Notice of time and voting place will be sent to all eligible members in the near future.

» VISITING ARTISTS TO SPEAK

Studio artist, Judith Ann McDonald; craftsman, Frank E. Cummings III; and illustrator, Richard Oden will give a lecture-demonstration Tuesday evening (May 28) at 8 pm in Ag. Eng.-123. The three artists, visitors from California State University, Long Beach, are sponsored by the Chancellor's Special Lecture Fund as part of a travelling lecture series within The California State University and Colleges. The public is invited.

» REGISTRAR WILL AID IN SUMMER REGISTRATION

Faculty and staff members are reminded that if they wish to enroll for classes during the summer quarter, the Registrar's Office will assist with their registration. Staff members who will be enrolling should complete their registration books and leave them at the Registrar's Office, Adm-219, by June 14. Any student (or staff member) who was not enrolled during the winter or spring quarters must clear through the Admissions Office before they can enroll for summer quarter.

» PLANT SALE PLANNED AT ORNAMENTAL HORTICULTURE UNIT

On June 1, from 8 am until 5 pm, the Ornamental Horticulture Department will feature an end of the year close out on student grown plants. A large group of landscape plants will be on sale at half price. There will also be specials on vegetables, potted plants and other ornamentals.

» WHO . . . WHAT . . . WHEN . . . WHERE ? ? ?

Maurice L. Wilks (Architecture and Environmental Design) has received a certificate of postdoctoral study for his studies in the field of perception while on sabbatical leave as a visiting associate research psychologist at the University of California, Los Angeles. Wilks also recently received word from the New York office of the American Arbitration Association that he has been named a member of the National Panel of Arbitrators.

Laurence F. Talbott (Industrial Technology) was elected to a one-year term as vice president of the California Association of Industrial Technology during its annual meeting held recently in San Jose. The statewide association is composed of industry representatives and university faculty and students interested in degree programs in industrial technology.

Vincent J. Gates (Journalism) appeared on a panel to discuss career guidance in public relations at the Los Angeles Publicity Club on May 20. His topic was "The University Route to Public Relations Careers." The main seminar speaker was Ms. Denny Griswold, New York editor of the P.R. News.

James R. Emmel (Head, Speech Communication) participated in an International and Intercultural Communication Conference at Pepperdine University in Malibu on May 17-18. The conference was made up of educators, business executives, armed services personnel, and government officials from the U.S. and foreign countries. The program focused on the "Technical, Structural, Organizational and Interpersonal Aspects of International and Intercultural Communication."

Thomas C. Barnhart (Men's Physical Education) has recently been notified by the Graduate School at the University of New Mexico in Albuquerque of his admission. Barnhart will begin work towards a Doctor of Education degree in physical education in the fall.

Robert L. Hoover (Social Sciences) has been notified of the publication of his article, "Aspects of Chumash Punctate Art," in the April-June issue of The Masterkey, the journal of the Southwest Museum in Los Angeles.

Barbara Hallman (History) has just received certification from the University of California, Los Angeles, that she has completed all requirements for the Doctor of Philosophy degree in history.

Agnes Rash (Mathematics) has just received certification from the Graduate School of Education, University of Pennsylvania, that she has completed all requirements for the Doctor of Philosophy degree.

Thomas G. Schumann (Physics) has been awarded a grant by Associated Western Universities to continue research in biophysics this summer at the University of California, Berkeley. Dr. Schumann started research in this field last summer under a similar grant.



» Typewritten copy intended for the next issue of Cal Poly Report must be received prior to 12 noon on Friday (May 31) in the Office of Information Services, Adm. 210. Copy intended for Cal Poly Dateline, which replaces the "Coming Events" section of Cal Poly Report and is published separately on Thursdays, is due in the Office of Information Services by 12 noon on the Tuesday before publication.

➤ TOUR GUIDES HAVE SUCCESSFUL YEAR

More than 2,000 elementary- and high school-aged students of San Luis Obispo area schools have benefited from tours of agricultural facilities at Cal Poly during the current academic year. Fifty-one tours were conducted by 68 students in the School of Agriculture and Natural Resources who volunteered their time for the project. The tour program is a project of the student council of the School of Agriculture and Natural Resources. It has been carried on for a decade.

➤ D.A. TO SPEAK ON CAMPUS

Robert N. Tait, County District Attorney, will speak to a class on constitutional law on May 30 from 1:30 p.m. to 3 p.m. in Library-126. Mr. Tait is running for re-election against Barry Hammer. Allen Settle (Political Science) has invited the attendance of all interested persons.

➤ BICYCLE RALLY IS PLANNED

Residence halls occupants at Cal Poly will flow onto the highways and roads between San Luis Obispo and Morro Bay on Saturday (June 1). At least 100 students will be travelling en masse as part of a dormitory bicycle rally. George Moorehead, student coordinator of the event, asks that motorists look out for the bicyclists as they will be travelling on some of the main roads from San Luis Obispo to Morro Bay and return. The rally is sponsored by the Interhall Council.

➤ SUPPORT STAFF VACANCIES LISTED

Vacant support staff positions have been announced by S. Milton Piuma (Staff Personnel Officer). Descriptions of the positions and other vacancies are posted outside the Personnel Office, Adm. 110, ext. 2236. Contact the Personnel Office to obtain an application. Cal Poly is an Affirmative Action Employer. The positions are:

Carpenter I (\$1022-\$1127), Plant Operations, Business Affairs Division. Duties and responsibilities include maintaining and repairing various types of buildings, sheds, fences, and other structures. Building and repairing bridges, culverts, lockers, shelves, doors, and window frames. Keeping equipment in good condition. Making rough sketches and estimate costs of new structures and repair work; advising in selection of building materials; keeping simple records and reports. Requirements: Education equivalent to completion of the eighth grade, and three years of experience as a journeyman carpenter. Closing date: June 25, 1974

Duplicating Machine Operator I (\$532-\$646), Duplication Center. Business Affairs Division. Duties and responsibilities include collating, stapling, paper punching, book stitching and gum padding of duplicated materials. Preparing the bills for chargeback to each university department for work performed by the Duplication Center. Requirements: High school graduate. Closing date: June 4, 1974

Supervising Custodian I (\$713-\$866), Custodial Department, Business Affairs Division. Duties and responsibilities include assigning work, supervising and giving instruction to custodial employees; training and instructing custodians in the proper use of equipment, materials, and accepted custodial techniques; scheduling and assigning non-routine projects; making inspections and maintaining standards of safety; cooperating with administration, faculty and students in moving furniture and equipment and in facilities arrangements for special events; keeping records and preparing reports. Requirements: One year experience as a Custodial Foreman in the State Colleges or two years of custodial experience including one year in a lead or supervisory capacity. Education equivalent to completion of eighth grade. Closing date: June 10, 1974

Clerical Assistant II-B (\$575-\$699), Dean's Office, School of Communicative Arts and Humanities. Duties and responsibilities include typing, duplicating, light dictation, and assisting school secretary. Requirements: High school graduate with one year office experience, General Clerical Test administered to all clerical applicants, type 45, and take dictation at 90wpm. Closing date: June 5, 1974

➤ CANDIDATES FOR FACULTY POSITIONS BEING SOUGHT

Candidates for positions on the faculty of the university are presently being sought, according to Donald L. Shelton (Director of Personnel Relations). Those interested in learning more about the positions are invited to contact the appropriate dean or department head. Cal Poly is an Affirmative Action Employer. Following is a description of the available positions:

Assistant Professor (\$10,800-\$13,128/annually), Ornamental Horticulture Department, School of Agriculture and Natural Resources. Duties and responsibilities include teaching undergraduate courses in flower production, greenhouse operations, and plant materials, advising students on academic problems, supervising students in the production and marketing of greenhouse crops. Candidates must possess a master's degree in ornamental horticulture or a closely related field with commercial or teaching experience. Minority group members and women are encouraged to apply. Position available: 1974-75 academic year.

Assistant Professor (\$10,800-\$13,128/annually), Ornamental Horticulture Department, School of Agriculture and Natural Resources. Duties and responsibilities include teaching undergraduate courses in landscape construction, landscape contracting, plant materials, and arboriculture, including operations and safety in tree climbing; advising and supervising students in the operation of machinery and in the development of landscaping. Candidates must possess a master's degree in ornamental horticulture or a closely related field with commercial or teaching experience. Minority group members and women are encouraged to apply. Position available: 1974-75 academic year.

Assistant Professor (\$10,800-\$13,128/annually), Ornamental Horticulture Department, School of Agriculture and Natural Resources. Duties and responsibilities include teaching undergraduate courses in landscape drafting, principles of landscape design, implementation of design, park planning and management, and plant materials, advising and working with students on landscape projects and aiding in development of instructional arboretum. Candidates must possess a master's degree in ornamental horticulture or landscape architecture with commercial or teaching experience. Minority group members and women are encouraged to apply. Position available: 1974-75 academic year.

Assistant Professor (\$10,800-\$13,128/annually), Ornamental Horticulture Department, School of Agriculture and Natural Resources. Duties and responsibilities include teaching undergraduate courses in nursery and garden practice, plant propagation, garden center management, and plant materials; student advising and supervising operation of department garden center. Candidates must possess a master's degree in ornamental horticulture or a closely related field with commercial or teaching experience. Minority group members and women are encouraged to apply. Position available: 1974-75 academic year.

Assistant Professor (\$10,800-\$13,128/annually), Ornamental Horticulture Department, School of Agriculture and Natural Resources. Duties and responsibilities include teaching undergraduate courses in floral design and flower shop management; advising and assisting students in design projects. Candidates must possess a master's degree in ornamental horticulture or a closely related field with commercial or teaching experience. Minority group members and women are encouraged to apply. Position available: 1974-75 academic year.

Lecturer, Range C or D (\$10,800-\$13,788), Foreign Languages Department, School of Communicative Arts and Humanities. Duties and responsibilities include teaching four classes in elementary Spanish and elementary German. Prefer candidates with a doctorate or all but the dissertation in German and/or Spanish with language lab experience. Minority group members and women are encouraged to apply. Position available: leave replacement for the 1974-75 academic year only.

➤ VACANT FOUNDATION STAFF POSITIONS

The following vacancies are listed on the Foundation staff of the university, as announced by Jack L. Fryer (Foundation Personnel Officer). Interested persons may call at the Foundation Personnel Office, University Union 212, ext. 4613, to make application. Cal Poly is an Affirmative Action Employer.

OFFICE MANAGER (\$628-\$927), EL CORRAL BOOKSTORE. Primary duties include supervision of bookstore office staff in all areas to include cash receipts, accounts payable, miscellaneous record keeping, shipping orders, preparation of personnel and payroll forms, mail orders, and routine correspondence. Assist administrative staff with financial and operating reports, analysis and budgeting. Requirements: Graduate with BA degree in Business Administration, preferably emphasis in accounting, and/or satisfactory business experience in related areas.

CUSTODIAL FOREMAN (\$609-\$723), Custodial Department. Primary duties are supervision of a custodial crew; training and instruction in the proper use of materials and equipment; providing instruction in acceptable custodial techniques; performing custodial and other duties as required. Applicants must have completed at least eight grades of elementary education. Requires one year of State College custodial experience, or two years experience working in a position of responsibility in a custodial capacity.

TRAP NESTER/CANDLER, Permanent, part-time, (\$2.00 per hr.), POULTRY UNIT. Primary duties consist of trapping pullets, grading and candling eggs, maintaining records, preparation of poultry products for marketing, handle sales and answer telephone. Applicant must be conscientious person with high school education, capable of accurate record keeping, and have good vision.

FOOD SERVICES SECRETARY I-A (\$589-\$716), permanent, full-time, FOUNDATION FOOD SERVICES. Primary duties consist of general secretarial work, receptionist, typing, shorthand, compilation of detailed figure work, bank deposits, and handling of cash. Applicant must be high school graduate with additional training in clerical skills desirable; have two years office experience in a responsible position, type 60 wpm, dictation 90 wpm.

encouraging notes

May 28, 1974

Faculty Research Participation. A directory of summer programs of this National Science Foundation project is available for review in the Research Development Office (Adm. 314). The directory lists the type of research being carried on in each program, the location, probable dates, and the names of the project directors. Eligibility includes three criteria: the applicant must be a full-time faculty member, must have had at least five years of full-time teaching experience in fields of science related to the topics of the research opportunity offered, and must hold an advanced degree in a scientific discipline. Stipends are based on the applicant's 1973-74 salary and may be up to \$600 per week plus travel allowances. Applications and contacts should be made directly with the project director and not with the National Science Foundation. NOTE: This year's programs are all at industrial laboratories, and not at universities, as they were previously.

* * *

Aids to Individual Scholars. The American Council of Learned Societies provides a diversified program of competitions to be held in 1974-75. The Council's fields of interest include: philosophy (including the philosophy of law and science); aesthetics; philology, languages, literature, and linguistics; archaeology; art history and musicology; history (including the history of science, law, and religions); cultural anthropology; and folklore. Proposals with a predominantly humanistic emphasis in economics, geography, political science, psychology, sociology, and the natural sciences will also be considered. Applicants must be not more than 50 years of age at the time of the deadline for applications. Awards will not exceed \$12,000 and are intended primarily for the provision of free time, although amounts for travel, for clerical or research assistance, or for reproduction or purchase of materials are allowable. Among the different types of programs are: Study Fellowships, Grants-in-Aid, Travel Grants to International Congresses and Conferences Abroad, and Area Programs. Inquiries and requests for application forms should be addressed to:

Office of Fellowships and Grants
ACLS
345 East 46th Street
New York, New York 10017

Deadline for most of the programs is October 15, 1974, for funding to be used between July 1, 1975, and December 31, 1976.

* * *

Biotechnology Resources Program. This program, a part of the Division of Research Resources, National Institutes of Health, uses resource grants, resource-related research project grants, and research contracts to assist academic institutions in developing and sustaining unique, complex and costly technological capabilities vital to modern biomedical research and patient care. Types of Biotechnology Resources currently supported include: Computer Resources, Biomolecular Characterization Resources; Biomedical Image and Image Processing Resources; and

Biotechnology Resources Program (continued).

Biomedical Engineering Resources. Three pamphlets about this program are available for your review in the Research Development Office (Adm. 314).

* * *

Energy Research. The National Science Foundation has received supplemental funds to support energy-related research. Support will be provided for studies in these areas:

1. Combustion research: staged combustion; particle and droplet dynamics; carburetion and fuel injection systems; and the development of basic combustion models.
2. Materials research: low friction/high temperature lubricants, and improvements in materials to meet the needs of advanced cycles and fuel mixtures.
3. Energy conversion: high efficiency cycles leading to better usages of available energy resources. Specific areas to be supported include potassium topping cycles, higher temperature gas turbine cycles for peaking power, Rankine cycles, and hybrid power generating cycles.

There is no specific deadline, but allow four months for review. For further information and application procedures contact:

George James, Technical Information Specialist
Division of Advanced Energy Research and Technology
Research Applied to National Needs
National Science Foundation
Washington, D. C. 20550
(202) 632-7398

* * *

Thermal Energy Conversion. July 9, 1974, is the due date for advanced research and technology on key program elements proposals. The National Science Foundation anticipates funding approximately 10-20 projects with the following sub-categories:

1. Systems components and related problems in a marine environment
2. Energy delivery
3. Resource, ecological, and environmental studies
4. Legal considerations
5. Potential byproducts of large (100 Mwe or larger) floating ocean thermal power plants.

NSF Program Solicitation 74-9 is available in the Research Development Office (Adm. 314) for review. Additional information may be obtained from:

Division of Advanced Energy Research and Technology
Research Applied to National Needs
National Science Foundation
Washington, D. C. 20550
(202) 632-5726

* * *