

# HELLO GIRLS!

# HI FROSH!

★ ★ ★

Mustangs Open Season Saturday Night In Poly Stadium



CALIFORNIA STATE POLYTECHNIC COLLEGE ★

Friday, September 18, 1956

Vol. 17, No. 1

San Luis Obispo, California

## First of the Season Saturday

### Grid Squad Potentially One of Best in History, As SF Gator Tilt Looms

By Harold Young

Poly's Mustangs kick the lid off the 1956 football season against San Francisco state's Golden 'Gators Saturday night in the Poly stadium, where it has been said by "those in the know" that fans will see one of the most capable Poly 11's in the school's history perform in six home engagements this fall.

The bay city boys will be the first of 10 opponents to test the potential powerhouse of Poly's head man, Roy "Silver Fox" Hughes. Ability of the Mustangs to maneuver against the 'Gators should indicate what's to come in approaching grid wars.

Poly closed its 1955 season with a 32-0 win over the 'Gators, but Hughes warns the northerners loom much stronger this year and can be expected to improve their 5-5-0 record of last fall. Coach Joe

The Mustangs host a strong New Mexico A & M team Sept. 29 in the second game of the season. The Aggies suffered a three win-seven loss record last year, but are reported improved this season and headed by sophomore back, Joe Kelly, who was second behind Arizona's Art Luppino in ground gaining in the Border conference last year.

Verducci's 'Gators are expecting eighteen returnees from last year, and will field 10 of last season's starters in the opening lineup. The newcomer to the state lineup will be sophomore Manuel Perry, 160 pound quarterback who will engineer the T-attack. Much of the work load in the backfield is carried by 200 pound fullback Bob Rodrigo; while the line is anchored by Floyd Peters, 210 pound senior tackle.

#### Poly's Line Heavier

The Hughesmen figure to outweigh the visitors in the line by seven pounds per man while the 'Gators have the backfield edge. Poly's lineup—still quite undecided, mentor Hughes says—calls for a near average of 200-pounds in the line and 175 in the backfield.

The "Silver Fox" lost only four members of last season's squad and has 16 returning letter winners back from the successful (7-3-0) crew, and will count on their talents.

Several JC transfers have bolstered the overall depth of the of the team, which for its size and weight will display tremendous speed, Hughes reveals. The green and gold headman says providing the squad suffers no losses through eligibility, service or to other schools, the Mustangs will be three deep at all but one, or possibly two, positions.

#### Toughies on Slate

The Mustang coach explains that while the outlook for a successful season looks fairly bright it should be stressed that (continued to page 2)

## Orientation Schedule

### Tuesday - September 18

6:30 - 7:15 pm  
7:00 - 10:30 pm  
7:30 - 10:30 pm

### Wednesday - September 19

8:00 am  
4:30 - 5:30 pm  
6:30 - 7:15 pm  
7:30 - 10:00 pm  
7:30 - 9:00 pm  
7:00 - 10:00 pm

### Thursday - September 20

4:30 - 5:30 pm  
7:30 - 10:30 pm  
7:00 - 9:00 pm  
7:00 - 10:00 pm

### Friday - September 21

9:00 - 10:00 am  
10:00 - 11:00 am

11:00 - 12:00 am

1:00 - 5:00 pm

1:00 - 5:00 pm

4:30 - 5:30 pm

6:30 - 7:15 pm

8:00 pm

### Saturday - September 22

8:00 am

9:30 - 12:00 am

1:00 - 4:00 pm

5:00 - 7:00 pm

8:15 pm

after game

### Sunday - September 23

am

1:00 - 6:00 pm

7:00 pm

### Monday - September 24

9:00 - 10:00 am

9:00 - 10:00 am

1:00 - pm

5:00 - pm

Arrive, placement tests and medical exams (if not completed during summer)  
Dorm meetings  
El Corral fountain, Col. Union open  
Gym, pool open

Placement tests, medical exams  
Intramurals  
Dorm meetings  
Gym, pool open  
Movies (Eng Aud)  
El Corral fountain, Col. Union open

Intramurals  
Gym, pool open  
Movies (Eng Aud)  
El Corral fountain, Col. Union open

Orientation Assembly (Gym)  
Division Assemblies  
Ag. Students (Eng Aud)  
Engineers (Gym)  
Arts & Sciences (Sc E-32)  
Department meetings  
Aft. devoted to dept. advisers  
Library campus tour (Lib. patio)  
Intramurals  
Dorm meetings  
Rally (Gym)

Registration  
Student wives reception tour  
Scheduling of classes  
"Meet Faculty" dinner (Poly Gr.)  
Football (Stadium)  
Dance (Gym)

Transportation to church  
Beach party (Avila)  
Wife's coed party (Cafeteria 1)

Frosh class meeting (Eng Aud)  
Transfer students (Sc E-32)  
Freshman Assembly (Eng Aud)  
All campus barbecue (Poly Grove)

## OFFICIAL

## WELCOME



JULIAN A. MCPHEE  
... President

One of the greatest pleasures which I enjoy each year is the extending of a most sincere welcome to all new and returning students. This year it is even more significant and enjoyable to welcome the first coeds to the Cal Poly campus in nearly 30 years.

I want all students to realize that Cal Poly is their college. The administration, faculty and all the facilities of this college are here for just one purpose—to supply the students with the type of higher education they want.

We want the students to study and work hard, but we also want them to enjoy the years they spend here by entering into the various extra-curricular and recreational activities which go to make up a great deal to the personality development afforded by college life.

Unfortunately the size of the present student body will prevent me from becoming personally acquainted with each student. However, I want each student to know that his or her personal welfare is my greatest concern.

May your days at Cal Poly be profitable educationally and enjoyable, and again my sincere welcome to you new and old students and a special welcome to you women students.



JAMES DUFFY  
... ASB Secretary, adds greetings

### COUNSELING CENTER

The counseling center is dedicated to help students attain their maximum growth during their college years. It provides guidance for students (1) in determining their vocational goals, (2) who have difficulties in their academic work, and (3) who have personal problems.



ED SLEVIN  
... ASB President

It is my privilege to welcome each new Cal Poly Mustang and wish you the best of luck during your college career. As most upper classmen now realize, your freshman year is by far the most important.

This is your opportunity to make or break yourself for the coming years. Be on the lookout for the chance of bettering yourself and your college.

Cal Poly, your college, is uniquely famous for the "learn by doing" philosophy, both in educational fields and important extra-curricular activities. Take advantage of the situation now and become an active member of the Cal Poly family.

### Lasting Friendships

During the coming four years you will discover and become a part of lasting friendships and "home grown" traditions — enjoy them — use them — and they will benefit you.

Speaking for your other student body officers, Jim Duffy and Don Walker, I wish to impress upon you that the only reason we are here is to be of service to you. Let us know any suggestions you have, any information you wish from a student level or anything you would like to see done at your college.

### Here To Help

We are here to help you and work with you and the college. Alone we can do nothing. We need your help and cooperation. We need your loyalty and spirit. Together we can do many things as let's get rolling now by contemplating a successful orientation week.

In closing, I wish you the best of luck and success during your initial year and say: "We're glad to have you with us."

## Coeducation Time-Turning Event

Another freshman class soon will begin its journey

For the first time in years, there'll be our own queens today, some 1600 of 'em. With the influx comes the disappearance of an old landmark—an institution which has made us different from the rest—its all-male student body.

Coeds are here (look about you), a breathtaking change if you're the emotional type, for Poly has been without the charming sex for nearly 30 years.

El Mustang hails this movement as time-turning; a welcome event. It's time for a change of scenery hereabouts and what could be more pretty than a college full of gals?

through the undergraduate ranks of Polydom. They're due from which to choose for our activities. There'll be new and better standards of meal preparation. Usually coarse language should improve in most portions of the college area.

With a wary mind we extend our honest opinion, however, that Poly's dress of old is here to stay. We predict you'll see a few more dresses and, perhaps, an occasionally neater male. But we also bet you a silver spur you'll see a few more Levis and Lee's strolling about the acreage—on the females!

We're glad to have you here, girls!

## Multiple Events Planned To Acquaint Freshmen

First in a multiple of events designed to orient freshmen students with Cal Poly and general college life began yesterday with four days of conference outings at Rancho Marina in Cambria pines.

... Heading the program is Chuck Cummings, orientation chairman who is a junior electrical engineer major.

Planned during the remainder of the week are assemblies, dinners, intramural sports, dances, movies and various other activities.

### Meet Administration

On Friday, students will meet the administration at an assembly followed by another gathering where the division heads will be introduced. They include Harold Hayes, engineering; Vard Shepard, agriculture; and Dr. Robert Maurer, arts and sciences. Everett Chandler, dean of students, also will meet the group.

Library tours are scheduled for Friday afternoon at 8 p.m. there will be a rally in the gym for Saturday night's grid encounter with San Francisco state, here.

According to Cummings, there will be plenty of time for the freshmen to "relax" and get acquainted with classmates. The gym swimming pool will remain open every night for recreation as well as the El Corral fountain.

### Meet Faculty

A busy evening is scheduled for Saturday night with a "Meet the Faculty" dinner in Poly Grove. Following at 8 p.m. will be the football game. A gym dance will follow the game.

An Avila beach party is set for Sunday following church services. Transportation will be provided.

Monday, starting at 1 p.m., will be the freshman class meeting followed by an assembly. The day prior to starting classes will feature a barbecue in Poly Grove at 5 p.m.

## Enrollment Nudges 4000; Skirts Will Number Near 250

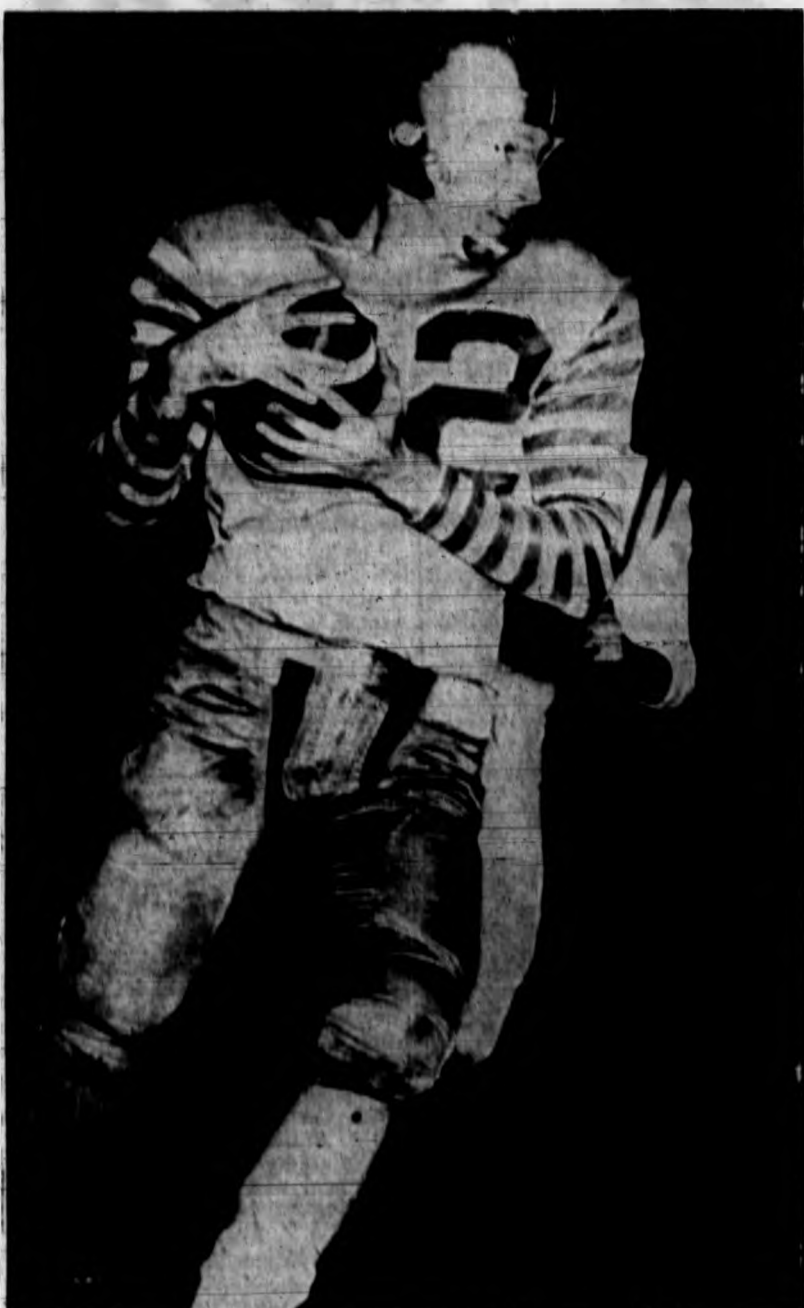
Fall quarter enrollment—which will include close to 250 women—is expected to exceed 3800, Paul Winner admissions officer, predicts.

New student applications showed an increase of 35.1 per cent over last year. All three divisions—agriculture, engineering, and arts and sciences show increases.

Elementary education and home economics head the interests of women students. However, records show that the girls are interested in 22 of the 33 majors offered. Even animal husbandry draws a share of feminine majors with more than 20 enrolling. Among other majors girls are interested in are architecture, physical education, poultry husbandry, electronics, farm management, and printing.



# 'First Year Most Important,' Says ASB Prexy Slevin



**ALL NINE**—Jim Cox, Cal Poly's all-American end grabs an aerial for good yardage, an event quite common last year during the grid season. Cox last year was second highest pass receiver among the NCAA small school ends. He will be in the starting lineup when the Mustangs meet San Francisco State Saturday night in Poly stadium.

## FOOTBALL

(continued from page 1)  
the Poly schedule calls for several "toughies." In the case of meeting strong Fresno State and San Jose State on respective week-ends (Nov. 10 and 17) the scheduling does not favor the locals.

Fresno also may field one of its "best ever" and San Jose is bidding for top coast independent honors. Besides these encounters, Hughes points out, New Mexico A&M and Midwestern stand as "tough nuts to crack."

Little all-American end Jim Cox returns to head the Poly line and will be supported heavily by a pair of guards, Willie Hudson and John Allen, both JC transfers that could bring back memories of the Roanich-Buccola duo of '53. Cox last year was the third-ranked receiver in NCAA small college competition, and was named the San Francisco '49ers ninth draft choice for 1957.

Hudson played ball at SF city college where he was named JC all-American. Allen attained all-conference honors at College of Sequoias.

Gurney, Antoine Back  
Heading the Mustang backfield will be fullback Walt Gurney and halfback Jim Antoine, with returnees and several newcomers vying for starting assignments. Senior quarterback Jerry Duncan is scheduled to see much action as field general of Poly's T-formation and will be backed by Vern Valdez and Jack Sears, who both handled the position last fall.

Coach Hughes expects additional material to enroll to aid the clubs depth. Keen competition between the athletes for starting have made it practically impossible for the Mustang mentor to name his "regulars." Spring practice sessions saw the following lineups: Ends, Jim Cox, Craig Brown, Chuck King, Al Moriarty; tackles, Doug Weaver, Sheldon Williams, Boyd Fane, Bruce Butterfield; guards, Hudson, Allen, Chuck Austin, Jim Doyle; centers, Duane Wickstrom, Howie Davis; quarterbacks, Duncan, Sears; halfbacks, Antoine, Dan Delgado, Don Adams, Bob Beathard; fullbacks, Dave Proctor, Dick Mannini and Gurney.

## Homecoming Queen Will Be From Poly's Own Co-eds

Another section for the pages of "Poly History" already in the making with the advent of co-eds this fall will be added when students choose from among the enrollment a Homecoming queen, scheduled this year Oct. 20. Announcement of the new selection plan has been made by Larry Litchfield, Homecoming chairman from Bonita. Discarded is the system of choosing a queen and her royalty group from the local junior college and high school.

"The queen's princesses also will come from Poly," says Litchfield, who adds that this latter is yet tentative.

A traditional highlight of the fall quarter, Homecoming this year will feature a grid clash between Poly's Mustangs and Long Beach State college.

Centered around the theme—"It's A New Era" (for the sake of co-eds)—will be a downtown parade, topped with a yell rally.

Although complete plans are yet to be outlined, Litchfield is hoping to have each organization, or several, on campus sponsor a candidate for queen.

Those interested in working on Homecoming plans are urged to contact Litchfield, campus box 1511, or attend the first Homecoming committee meeting of the year on Thursday noon, Sept. 27, in the library basement. The room number will be posted on the bulletin board next to the ASB office.

EL MUSTANG

Friday, September 18, 1958

PAGE 2

### Philosophy's Origin

## What's 'Learn-by-doing'?

By Bob Norton

"Upside down" and "learn by doing" are familiar terms to the Poly students in reference to his education. But, where did they originate?

Sixty years ago a young lawyer, Myron Angel, was walking the streets of San Francisco. Jobless! "Want a job?" was the query. Yes, said Angel. "Can you build a roof?" No, was the reply. "Sorry, I need someone with experience."

Then—and there—Angel was determined to form an institution where a young man could learn to work with his hands, as well as his mind. After many attempts to get appropriations through the legislature, Angel succeeded in establishing Cal Poly in 1908. In 1938 Cal Poly met a crisis. The legislature was determined to do away with the little junior college on the coast of central California.

McPhee Persuades Legislature  
A hard-hitting Irish educator, Julian A. McPhee, then chief of the state bureau of vocational education, persuaded the legislature not to close down the academy.

Long a champion of vocational education, McPhee agreed to serve as president for nothing if they would allow him to develop a college-level occupational training program. Higher educators in California disagreed with McPhee's theories; he was forced to prove each year that Poly was doing a real job in higher education to justify his request for building and expansion funds.

Other colleges assign a chapter in a textbook and allow the students to watch someone else do the work. "These are only the first two steps to education," remarks McPhee. "The third step is to do it yourself. This approach is the complete one."

This approach is sound and has been proven, as more and more manufacturing and industrial concerns, ranchers and allied agricultural service companies from not only the U.S., but Canada, Hawaii, Central and South America have sent executives to interview prospective employees.

### Poly A Pilot School

Cal Poly is pilot school, maintains McPhee. "We are showing the way in a field of practice and method that eventually will be adopted by more and more colleges."

Dr. Roy E. Simpson, state superintendent of public instruction, paid high tribute recently to the Cal Poly educational system when he said, "The success of

Cal Poly's 'learn-by-doing' methods, which originated by President McPhee, have been deemed worthy of imitation by other state institutions and by other colleges throughout the country."

The lands of Cal Poly total 8,828 acres; San Luis Obispo, 2,880 acres; Vothia Unit, 187 acres; and Kellogg Unit, 810 acres.

The agricultural engineering building has seven well equipped shops for farm mechanics, farm machinery, hydrology, farm power, and rural electricity.

## A.S.B. Head Urges Frosh Participation In Government

"Make student government your major extra-curricular interest," urges Ed Slevin, ASB president, who has cited a need for more participation on the committees by students, especially incoming freshmen.

Looking for help this school year is John Roston, temporary chairman of the student government committee. A new chairman will be elected in December.

Slevin has released a plan for the function of the committee which would divide it into two sections: one to continuously evaluate the present form of government, and another to work on suggested new types.

A major goal is to have a small sub-committee to work on nothing but publicity, new ideas and report on committees of the student government plan.

Slevin said that the only way to better the college's government is to "constantly try to improve it, either with new types or modifications."

He pointed out that last year students had a chance to pattern after our national type of government—three-branch system. The three-branch system was rejected, but, according to Slevin, the vote indicated the college needs a change.

First meeting of the committee will be around Oct. 1. Those interested in attending are urged to sign a sheet in the ASB office.

California State Polytechnic was established in 1901 by the legislature of the State of California.

## Hot Lunches Cease At El Corral; 83 Concerned

Lack of storage space with the proper temperature for perishables and certain canned foods has caused the hot lunch program of El Corral to be discontinued "indefinitely" starting Sept. 21, according to Duke Hill, manager.

"We've lost our store room next to the coffee shop due to the preparation for co-eds," says Hill, "and we can't possibly use our remaining space, the cubicles, for storing canned goods. Temperatures range from 105 to 110 degrees."

Hill explains that unless they have proper temperatures, canned foods will "bulge", spoil and could even poison the consumers.

Hill's decision to discontinue the hot lunches came after he took heat tests in the cubicle 'C' storing room as well as one used under the stadium.

However, Hill says that he has something "just as well" in store for hungry lunchers. The coffee shop will continue to prepare salads, sandwiches and fountain orders.

According to Hill, recent survey of consumer purchases disclosed that the shop sold on the average only 83 hot lunches daily, against over 600 salads and sandwiches.

"If the same holds true, we'll average nearly 1,000 sandwiches and around 400 salads per day," says Hill. "This should tax our cooking facilities to the maximum."

The new change will call for the hiring of a fountain specialty girl who will be advised to stress "quality" in her work. Breakfast will continue until 10:30 o'clock each morning.

## Active Saturday



**JIM ANTOINE**  
... talented halfback



**DUANE WICKSTROM**  
... smooth center



**JERRY DUNCAN**  
... Veteran Quarterback

### Publications Progress

## El Mustang Came From Fulfilled ASB Campaign Promise

Parakeet, Polytechnic Journal, Polygram, Mustang Roundup, El Roico and El Mustang are evolutionary names in the development of Cal Poly's newspaper and yearbook.

Two of them are familiar, but first publication was the Polytechnic Journal, a monthly paper first published in January, 1906. By 1917 it had evolved into Poly's official yearbook, coming out only in the spring.

The Parakeet was published for a few years starting in 1921. This was a literary annual of the school, containing creative writings, poems and jokes.

Polygram started in 1916, was the first student newspaper as such. This continued until 1932. From 1932 until 1938, there was no student newspaper.

### Wineroth Promised Paper

Harry Wineroth, who until this past May was Mustang graduate manager, promised the students in his 1938 student body presidential campaign that he would form another campus newspaper. His promise was carried out and the first issue of El Mustang was published on November 4, 1938.

First editor of El Mustang was Tom McGrath, now President Julian McPhee's assistant at the San Dimas campus.

During the war years when there were more sailors than civilian students both the yearbook and newspaper were suspended. Several years following the war they commenced operation again and Mustang Roundup disappeared.

### Self Supporting Program

Today, the Poly student publications program boasts one of few entirely self-supporting college newspapers in the country. El Mustang is the largest weekly newspaper between Santa Barbara and Salinas with a combined circulation of 3,500; all phases of editorial, photography, advertising and production is handled by students.

El Roico, the yearbooks, is considered one of the finest, yet most inexpensive in the state. Students in the publications department send out news and publicity releases continually, through facilities of the student news bureau.

A comparatively new major, since 1950, Cal Poly's agricultural journalism department is the largest of its kind on the west coast.



## Bureau, FFA Important To Ag Teacher Program

Relationships between the 227 high school Future Farmers of America chapters and the state FFA operations office maintained by the state bureau of agricultural education at Cal Poly form an important part of the training and orientation program for some 40 agricultural teacher-trainees each year.

## Dormitory Manager Aids Frosh

By Larry Litchfield  
Who is your dorm manager?

To you new freshman now arriving to live on campus, your dorm manager, an upper-classman chosen by a screening committee at the end of last year, will act as your "big brother" for the next nine months.

Having been a freshman, he well knows the problems that arise from time to time and knows how to cope with them. He is constantly on hand to handle the problems, to act in an advisory capacity, or just to talk with you when you feel like talking.

**Close-knit Groups**  
You will be living in a closely-knit group. You will make lasting friendships during your four years at Cal Poly, mostly during your first year. When you arrive at the dorm your dorm manager will be there to greet you and to introduce you to other members of the "home." From here you branch out to friendships in other dorms, and finally to upperclassmen. Friends are easy to come by at your new college.

Orientation week is an important part of your early college days. During this time you participate in intra-mural sports, barbecues, and attend meetings — learning more about this college's traditions, customs, and the people and places that will make your four-year stay a fond memory in years to come. Your dorm manager will be on hand during this week to answer any questions that may come into your mind — and there are many. By the time the upper classmen arrive, you will be well on your way to understanding the college.

**Job Just Starting**  
Since the year will be soon underway, the job of your dorm manager is just beginning. He will be quick to organize the dorm into a working club with officers and regular meetings planned. It is your group — take advantage of it. When the dorm is running smoothly he will step into the background and advise and guide you through the year. You will get to know each other well.

He'll help you with the tedious chore of pre-scheduling classes, not to mention all those assignments that give you trouble. He will be happy to discuss personal problems—anything that is on your mind, he is the man to see. He can advise you in entering Poly's wide selection of clubs and organizations — even student government has room for ambitious freshmen.

Your dorm manager has the answer to these questions and many more. You are Poly's newest crew. You will soon develop into the student leaders of the years to come.

## Library May Have To Levy Fine On All Late Books

Francis M. Allen, head librarian, reports that beginning this month, the library may be forced to charge a fine of 5 cents a day for all late books.

Reason for such possible action Allen states, is the large amount of damage done during the past year to books and magazines.

In one case, Allen reported that seven pages were torn from a bound volume of magazines which originally cost 15 cents each. It will now cost approximately \$15 to replace this volume, he says.

To replace an average book from the 40,000 on file in the library costs on the average of \$4.15, says Allen. This represents an appreciable amount of money that could be put to better uses if students were more careful.

Until now, the library has been able to depend upon the honesty and fair play of the students.

"But," says Allen, "unless some evidence is shown that library books and equipment will be receiving better care in the future, the fine will be put into effect."

EL MUSTANG

Friday, September 10, 1960

PAGE 3

## Good Jobs To Printers

Job placement for the 16 graduates from the printing department last June totaled 100 per cent, according to A.M. "Bert" Fellows, head of the department.

Fellows also has reported that the expected enrollment for this fall quarter is 150 students.

"Cal Poly now has printing graduates placed as far away as Hawaii and Massachusetts," says Fellows who also found employment the past summer for undergraduates on top publications throughout the state.

A majority of last June's graduates were placed with two of the industry's top leaders while the remainder went to other prominent firms throughout the nation.

Better known by students as "Bert," Fellows started the department with a class of five in 1945. Since then he has accelerated the program to national recognition and the title of being the leading college printing department leading to a bachelor of science degree in engineering west of Chicago.

Although cramped for space, says Fellows, the department has 10 linotype machines, five automatic presses and various type casting machines. The department head is hoping for at least 20,000 square feet of the coming industrial and graphic arts building to be constructed around 1960.

A fast-growing part of the department is instruction in the use of off-set. This portion of the program now has complete printing devices including the camera, plate-making equipment and presses.

Other than the mechanical end, students also are schooled in the administrative part of the industry. This includes cost and estimating, foremanship and accounting.

## Students Can Display Hobbies In Library

Cal Poly's Walter F. Dexter Memorial Library has 54,000 volumes and receives 680 periodicals ranging from the Aberdeen-Angus Journal to the Yale Review, according to Francis Allen, librarian.

The periodical collection includes many of the free circulation house organs and 195 gift subscriptions from faculty members. There is a budget of \$25,000 annually to maintain and supplement the library's collection. With this budget the library is able to obtain 6,000 books a year and pay for the rest of the periodical subscriptions.

This fall the library will be open approximately 68 hours a week. Monday through Thursday—7:45 a.m. to 5 p.m. and 7 p.m. to 10 p.m. Friday—7:45 to 5 p.m., Saturday—7:45 a.m. to 12 noon and 1 p.m. to 5 p.m., Sunday—7 p.m. to 10 p.m.

"The library would be happy for students with interesting hobbies or collections to bring them in for display in the library show cases," says Allen. "We also found that the students are quite interested in what goes on in the other departments of the college."

## LITTLE MAN ON CAMPUS By DICK BIBLER



"WELL WHEN YOU SAID YOU'D TAKE CARE OF CHOIRING HOURS I THOUGHT YOU MEANT YOU HAD A DORM KEY."

Cal Poly has a variety of land types available for various agricultural uses. Some acreage at San Luis Obispo is used for range purposes, other land is in hay, alfalfa, and orchard. At San Dimas land is utilized for citrus, avocados, and small deciduous plantings.

Cal Poly's two full-time physicians and two full-time nurses provide 24-hour medical service.

The Voorhis unit was donated to Cal Poly in 1958 by its owners, Charles B. Voorhis of Pasadena and his son, former Congressman Jerry Voorhis.

It's LACTERMAN'S for your

# College

Campus  
NEEDS

Welcome  
Coeds To  
Cal Poly



Naturally we're glad our college has gone Coed and we know the young ladies will be pleased to know of Lacterman's who specialize in wear created by the leading Manufacturers of the nation

Coats, Suits  
Dresses, Formals  
Shirts, Sweaters  
Blouses, Lingerie  
Coordinates

"Everything for the  
formal Coed"

OPEN THURSDAY 'TIL 9 P.M.

**Lacterman's**  
JUNIORS—WOMEN'S APPAREL—FURS

728 Higuera St.

Phone 1825

## Sportsman's Supplies

- Guns
- Ammunition
- Fishing Tackle
- Camping Equip.
- Loading Supplies
- Evinrude Motors
- Skin Diving Gear
- Gun Smithing

Open Thursday Nights 'til 9



719 Higuera ST.

San Luis Obispo



## The Administrators And Department Heads



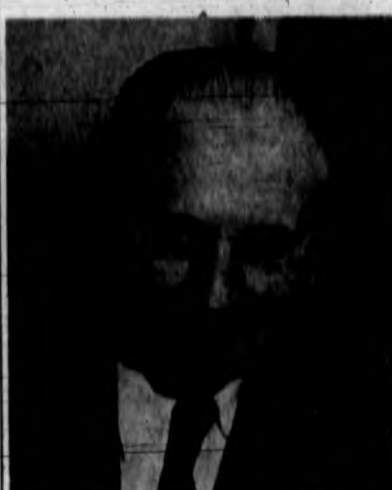
EVERETT M. CHANDLER  
Dean of Students



GEORGE C. LUCAS  
Administrative Dean  
Finance and Development



OBERLIN B. NERSSON  
Guidance Officer



DOUGLASS W. MILLER  
Director of Public Relations



DONALD S. NELSON  
Business Manager



CLARENCE RADIUS  
Electronics Engineering



ROBERT E. KENNEDY  
Assistant to President



HAROLD O. WILSON  
Administrative Dean  
Student and College Affairs



DR. E. D. LOVETT  
College Physician



LYMAN L. BENNION  
Animal Husbandry



C. O. MCCORKLE  
Administrative Dean, Instruction



ROBERT L. MAUMER  
Assistant Administrator  
Arts and Sciences



FRED W. BOWDEN  
Electrical Engineering



COL. PORTFORD A. LOIBELLE  
Military Science & Tactics



NORMAN SHARPE  
Air Conditioning & Refrigeration



HAROLD P. HAYES  
Dean of Engineering



VARD M. SHEPARD  
Dean of Agriculture



LEROY B. HUGHES  
Director of Athletics

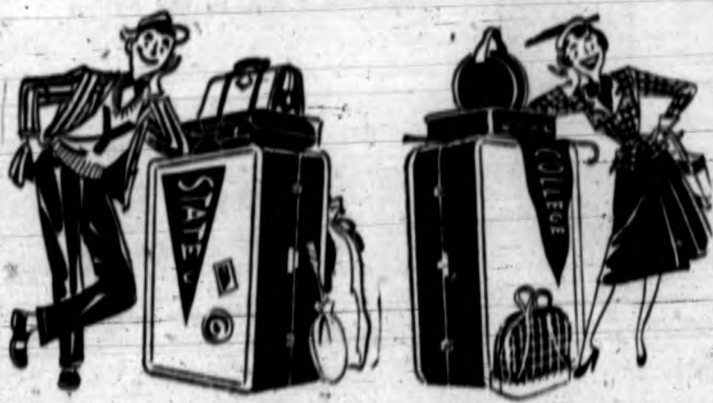


EDGAR HYER  
Farm Management



GLEN A. NOBLE  
Biological Science

# WELCOME FROSH!



You'll find everything you need for the home or room, your auto, or your sports needs. Come in and see our friendly salespeople—across from the Spudnut shop on Higuera.

## Western Auto

ASSOCIATE STORE

Home owned by Jack and Ellen Heinz  
685 Higuera

We Don't Sell  
You Buy

• • •  
Levis  
Lee Riders  
Wranglers  
• • •

Poly Jackets  
Holeproof Sox  
•

Sweaters

Thrifty Shopper Stamps

CARL **KIRK** EBY  
MENS WEAR  
851 Higuera Street

## ZIMMERMAN'S Fountain Cafe

Breakfast - Lunch - Dinner  
Fountain Service - Sandwiches

Students Welcome

785 Higuera St.

San Luis Obispo

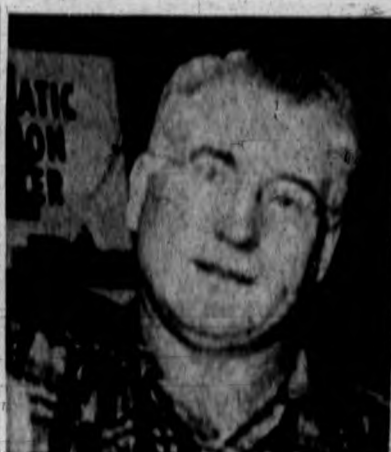




ARTHUR G. RUTESCH  
Education



GEORGE J. MARLEMIN  
Architecture



JAMES F. MERSON  
Agriculture Engineering



GEORGE DRUM  
Dairy Husbandry



HOWARD C. BROWN  
Ornamental Horticulture



A. M. FELLOWS  
Printing—Engineering Division



RICHARD I. LEACH  
Poultry Husbandry



LOGAN S. CARTER  
Bolt Science



MILLARD J. POTTER  
Industrial Engineering



DAVID M. GRANT  
English & Speech



MILO E. WHITSON  
Mathematics



RICHARD C. WILBY  
Welding



LESTER W. GUSTAFSON  
Aeronautics



HAROLD P. DAVIDSON  
Music



KENNETH KITCH  
Agricultural Journalism



FRANCIS F. WHITING  
Machine Shop



ROBERT A. MOTT  
Physical Education



A. NORMAN CRUIKSHANKS  
Social Science

BARR'S  
DRIVE IN



BARR'S drive in RESTAURANT

Open Everyday — 7 a.m. until 1 a.m.

Only 4 blocks from campus on Hwy. 1 just north of Foothill Blvd.

WELCOME FROSH!

While you're getting acquainted  
with your new home drop into  
Pely's closest and most modern  
drive in restaurant.

Deep Dish Cream Pie...

The biggest and best serving in town!

The "Grinder"...

The fabulous sandwich — made with a loaf of French  
bread.

You've seen them  
Advertised  
We  
Have  
Them!

YOUR CHOICE OF  
EXCITING  
COLORS  
in the ROYAL

Portable

No longer need a typewriter be drab. Express your  
personality in one of Royal's new pastel colors;

ROYAL, THE RUGGED PORTABLE,  
THE MOST PREFERRED PORTABLE.

In a recent on-campus survey by  
the Gilbert Youth Research Or-  
ganization taken in schools  
throughout the nation, it was re-  
vealed that more students would  
like to own a Royal Portable than  
the next 3 makes combined.

The Standard Typewriter in Portable Size

JOHNNY  
NELSON OFFICE EQUIPMENT  
CO.

Phone 228

690 Higuera St.





**Freshman Football**

Freshmen with high school or service football experience who wish to try out for the varsity football team are asked to see assistant coach, Tom Lee, in the stadium office.

Roy Hughes, head football coach, says everyone will be given a chance and those interested should make arrangements with Coach Lee.

**Need Work?**

Students interested in part time or full time work during the school year are urged to visit the placement office in the administration building.

Students will be interviewed by the placement secretary as to the type of work desired. Many jobs are on file in the office.

State jobs require that the employee sign an oath showing he is not nor has been a member of a subversive organization.

**ACCURATE—RELIABLE  
PRESCRIPTION  
SERVICE**

• Baby Items

• Drugs

• Sundries

Open 9 a.m. to 9 p.m.

**Norton's**  
**EAGLE PHARMACY**  
Harry Norton & Son  
888 Higuera St. Phone 916

**1956 Basketball Schedule**

DECEMBER	1	—	FRESNO STATE at FRESNO
DECEMBER	0, 7, 8	—	REDLANDS TOURNAMENT at REDLANDS
DECEMBER	15	—	FRESNO STATE at CAL POLY
DECEMBER	18	—	ROCKHURST COLLEGE at KANSAS CITY, MO.
DECEMBER	19	—	CREIGHTON UNIVERSITY at OMAHA, NEB.
DECEMBER	21	—	DRAKE UNIVERSITY at DES MOINES, IA.
DECEMBER	22	—	BRADLEY UNIVERSITY at PEORIA, ILL.
DECEMBER	28, 29	—	CHRISTMAS TOURNAMENT at CAL POLY
JANUARY	5	—	SAN DIEGO at CAL POLY
JANUARY	11	—	WHITTIER COLLEGE at WHITTIER
JANUARY	12	—	LONG BEACH STATE at LONG BEACH
JANUARY	18	—	WESTMONT COLLEGE at CAL POLY
JANUARY	19	—	LOS ANGELES STATE at CAL POLY
JANUARY	25	—	LONG BEACH STATE at CAL POLY
FEBRUARY	1	—	PASADENA NAZARENE at CAL POLY
FEBRUARY	5	—	SAN FRANCISCO STATE at CAL POLY
FEBRUARY	12	—	SANTA BARBARA COLLEGE at SANTA BARBARA
FEBRUARY	10	—	SAN DIEGO STATE at SAN DIEGO
FEBRUARY	19	—	SANTA BARBARA COLLEGE at CAL POLY
FEBRUARY	28	—	WESTMONT COLLEGE at SANTA BARBARA
MARCH	2	—	LOS ANGELES STATE at CAL POLY

**1956 Football Schedule**

Sept. 22	San Francisco State, here
Sept. 29	New Mexico A & M, here
Oct. 6	Pepperdine College, Los Angeles
Oct. 13	San Diego State, here
Oct. 20	Long Beach State, here, Homecoming
Oct. 27	College of Idaho, Caldwell, Ida.
Nov. 3	Marine Recruit Depot, here
Nov. 10	Fresno State, Fresno
Nov. 17	San Jose State, San Jose
Nov. 22	Midwestern, here, 11 a. m.

(All home games start at 8:15 p. m. unless indicated)

An opportunist is a man who, finding himself in hot water, decides to take a bath. Avoid cutting your lawn too close. Many lawns turn brown in spots due to sunburn.

**Basketballers Out Oct. 15; Tough Slate**

By Bob McCutcheon

A 24 game basketball schedule is facing Coach Ed Jorgensen and the Mustang cagers. The highlight of the season is a seven day trip to the middle west, where the Mustangs will play four games. The teams are Rockhurst College in Kansas City, Mo.; Creighton University of Omaha, Neb.; Drake University of Des Moines, Ia., and finishing with powerful Bradley University of Peoria, Ill.

The Mustangs will also participate in two tournaments, the Redlands tourney and Cal Poly's own Christmas tourney, which they won in a thriller from Santa Barbara, last year.

**Prospects for the Season**

Prospects are slim and unknown. Having only five returning lettermen back Jorgensen says, "This season should be a real challenge, as we have a long way to go before we will be ready."

The returning lettermen will be guard Johnny Grandberry, guard Len Oswald, center "Diablo" Dunn, and forward Mike Simmons. One of the bright spots is the return from service of letterman Frank Kerker, who played on the 1951 aggregation.

**JC Transfers Impress**

The first practice for the Mustangs will be Oct. 15 with approximately 40 to 50 hopefuls reporting. There will be six to seven well known and tried junior college transfers to bolster the roster. Those boys who do not make the Varsity squad and who are undergraduates will have a chance to play with the Cal Poly Colts. Known JC transfers that are in the Mustang fold are all-southern California forward Val Padilla and 6' 4" Forward Bill Compton of Antelope Valley JC. Sam Gariner and Doug Taylor of San Bernardino, and Ed Fitzgerald of Menlo JC also are expected. Another impressive boy who will be a freshman but has a great reputation, is the anticipated registration of all CIF'er Charles Estrada of Atascadero should give a good accounting of himself before the season is long gone as he has great scoring potential.

Coach Jorgensen has picked Los Angeles State as the team to beat in the CCAA. Rumors have it that the entire L.A. city college championship junior college team of last year has enrolled there, plus a 6' 10" center from Ventura JC. San Diego State he predicts will be very tough and in good contention throughout.

More than 3,600 naval aviation cadets were trained on the Cal Poly campus at the United States Naval Flight Preparatory School from January 1945 to November, 1944.

**More Faculty**

GENE BRENDLIN  
Foundation Manager



DAN LAWSON  
Activities Officer



WOODFORD B. BOWLES  
Physical Science

**TESTING CENTER**

The testing center is part of the counseling service. In addition to administering and scoring the entrance classification tests, the testing center also administers the tests used for counseling purposes. Furthermore, tests are administered for the Educational Testing Service, Selective Service tests, special department tests, and tests requested by certain corporations interested in our graduates. Entrance classification tests are maintained in a counseling folder in the Counseling Center. Students who wish to know how they scored on their tests are invited to make an appointment with a counselor.

**55 Years Service  
To Cal Poly Students**

**WELCOME  
New Students**

**Poly Payment Plan**

In business since 1889, we've served Poly students since the day Cal Poly opened in 1901—with Poly-minded payments terms

**We know how to please you!**

You won't find special payment-type merchandise here—only high-quality brands—the kind we're proud to have you use as you pay.

You're our reputation

Diamonds Watches Silver  
Accessories Silver

**Marshall's Jewelry Store**

Continuous Since 1889

790 Higuera St.

- ✓ Pegged CORDS
- ✓ Pegged DENIM
- ✓ SPORT SHIRTS
- ✓ TEE SHIRTS
- ✓ GYM TRUNKS
- ✓ KEDS GYM SHOES
- ✓ LEVIS / JACKETS

everything for Men and Boys—Plus Green Stamps

Also Complete stock of Suits, Slacks, Shoes, and

**We Give "Z.N." Green Stamps**

**GREEN BROS.**  
FURNITURE & HOME DECORATING

871 Monterey St.

Phone 724



## Health Center Spruced Up; New Building In Future

A new health center that will be one of the most modern college hospitals on the west coast is no longer a dream to Poly officials. Recently, in Sacramento, state architects completed plans for such a hospital at Cal Poly, based on accommodation of a student body of 6,000. Recently completed is center because of the expansion program under way in preparation for the women students coming to Poly in the fall. That girls are coming, is important of course, but of as much importance is the fact that funds have been appropriated for expansion and new facilities needed to take consistently better current care of Cal Poly's increasing male population.

### Lovett Happy

Dr. E. D. Lovett is more than happy to point out the many changes and improvements being added to the health center. Under present construction is a new men's wing that will take up one-half of a men's dormitory directly across from the health center. The new wing consists of a four-bed ward; two isolation rooms to be used for recovery from operation or isolation; a kitchen, where light foods may be prepared; a night room for a corpsman; and a store room for bedding and other hospital needs.

The ward room presently in use will be made into a four-bed ward for women patients, and there will also be two isolation rooms and a night room for a resident.

## New Students Need Physicals; Doctor Outlines Program

It is a required part of registration, to have a physical examination, upon admission to the college. There are no exceptions, says Dr. Earl Lovett, college physician.

The records of each student's examinations are carefully reviewed after the examination period to study any physical problems that may interfere with the student's academic progress, or later life.

Where such problems exist, the student will be called back for further evaluation, and steps will be taken to correct any particular problem, says Dr. Lovett.

"We feel that the nature of the campus necessitates the routine injections against tetanus," the doctor says. "In reality, we are living on a big farm, where everyone is more prone to being involved in minor accidents, any one of which might cause tetanus. We also have found that giving influenza vaccine has been worthwhile in cutting down the sickness on campus in the past," according to Lovett.

In addition, each student will receive an audiogram.

**Delight**

**Yourself...**

**Get A Hobby**

**MODEL  
AIRPLANES**

Plastic, Flying and  
Rubberband Models

At

'Hobby Headquarters'

**MARV'S  
Hobby Shop**

805 Higuera St.

Phone 1538-J

EL MUSTANG

Friday, September 18, 1958

PAGE 7

## College Union Staff Offers Opportunities To Fresh Students

Are you a student who would enjoy beach parties, dances, camping trips, drama, skating, special assemblies, or the warm atmosphere of a T.V. lounge, snack bar and ping-pong? Your College Union extends a warm welcome to new students.

The committees which plan and

supervise a wide variety of activities are composed of students who are interested in providing continuous improvement to the College Union program.

To join committees leave your name in the A.S.B. Office or College Union Board chairman Darrel Gordon, or leave a request for

more information in the Campus Post Office addressed to the College Union Board.

**NEW Portable Typewriters  
USED Office Machines**

**1 Day Service  
Special Tune-up  
Rates To Students**

**AUTHORIZED  
UNDERWOOD DISTRIBUTOR**

**MARSHALL**

**Business Machines**

1453 Monterey St.

**Rowan's**

**STORE FOR MEN AND BOYS**

782 Higuera Street

San Luis Obispo

**BENO'S  
HEADQUARTERS FOR  
LEVI'S**

**Only Store in Town  
with Leather Cuff  
Poly Jackets**

**BENO'S  
HEADQUARTERS FOR  
LEVI'S**

**CATALINA  
Sweaters**

**BENO'S  
HEADQUARTERS FOR  
LEVI'S**

**COOPERS  
Underwear**

**BENO'S  
HEADQUARTERS FOR  
LEVI'S**

**PIONEER Belts**

**BENO'S  
HEADQUARTERS FOR  
LEVI'S**

**OVER 2000 SPORT  
SHIRTS \$2.00 up**

**BENO'S  
HEADQUARTERS FOR  
LEVI'S**

**WELDING  
GLOVES \$1.00**

**BENO'S  
HEADQUARTERS FOR  
LEVI'S**

**ANSON-SPIDEL  
Jewelry**

**BENO'S  
HEADQUARTERS FOR  
LEVI'S**

**CONVERSE  
TENNIS SHOES  
\$3.00 up**

**BENO'S  
HEADQUARTERS FOR  
LEVI'S**

**LEVI Western  
Shirts**

**BENO'S  
HEADQUARTERS FOR  
LEVI'S**

**FRYE Boots**

**BENO'S  
HEADQUARTERS FOR  
LEVI'S**

**ORIGINAL  
CHIFFWA  
ENG. BOOTS**

**BENO'S  
HEADQUARTERS FOR  
LEVI'S**

**PEG Denim & Cords**

**BENO'S  
HEADQUARTERS FOR  
LEVI'S**

**DON'T FORGET IT'S BENO'S AT 1019 MORRO STREET**



## 'Kickoff' Dance Saturday Night After Grid Tilt

Poly's first coeducational freshman class will have the season's first dance all to themselves. The first and only college farm center will sponsor Saturday night's "kick-off dance" in Crandall gym, according to Tom Avenall, farm center vice-chairman.

The dance, held in connection with the freshman orientation program, will follow the game with San Francisco State college. Returning Polyites will register for fall quarter the following Monday.

A fall harvest theme will prevail at the "kickoff" affair and will be tied in with the first athletic event by decorations in the school colors, green and gold.

Music will be provided by a dance band arranged for by the Orientation committee.

## Music Department Has New Member

For the first time in 20 years, the music department organized and headed by Harold P. Davidson, has a second instructor. The new member of the staff is Clarence Caughran who comes from Linfield College, Oregon.

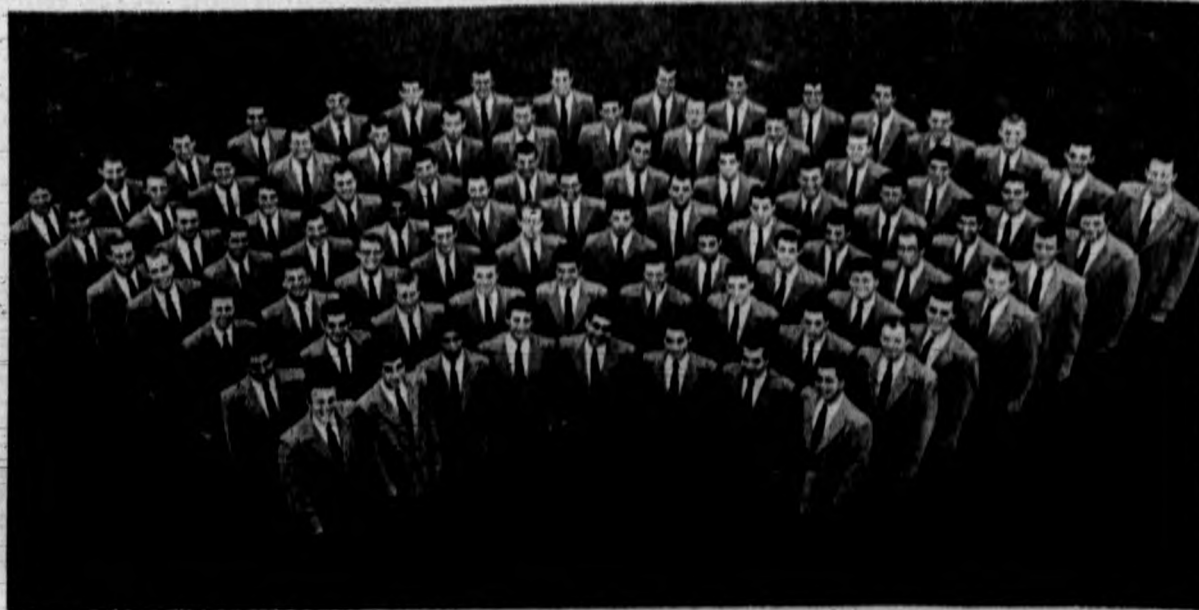
Caughran is a specialist in instrumental work having had training in brass woodwind and percussion instruments. During his seven years at Linfield college he developed a band, brass and woodwind ensembles, a symphonetta, and taught music education.

While at Cal Poly, Caughran will take over the direction of the marching band, teach instruments, continue the brass ensemble started but a few years back, develop a woodwind ensemble and a symphonetta, as well as teach music education.

The Men's Glee Club and Collegians, as well as the quartet and the Majors will continue on under the direction of Davidson. He will also start for the first time a Women's Glee club. In a few years from now it is hoped that a mixed cabella choir can be started as soon as the Women's Glee club is well under way.

Davidson will continue to teach music appreciation, theory, and harmony and this year hopes to teach classes in voice as was done to some extent last year.

## Popular Men's Glee Club



**THE MEN'S GLEE CLUB**—Cal Poly's singing ambassadors go on a yearly weeklong tour to different parts of the state, present a spring Home Concert, sing at many student functions, and issue a long playing hi-fi record album along with the Collegians—15 piece dance orchestra and various specialty groups. Tryouts will be held Monday, Tuesday and Wednesday nights, September 24-26, in CR 1.

## Sing Or Play Instrument? There's A Place For You

How can freshmen get into the Men's Glee club, Collegians, and the Mustang Marching Band?

This is a question asked each year by many musically inclined frosh who doesn't get the word until it's too late.

With approximately 50 old glee club men returning, try-outs will be conducted on Monday, Tuesday and Wednesday nights, September 24, 25, and 26 in CR 1 for 40 new men.

As Don Marshburn, this year's glee club president says, "If you really like to sing, if you like all kinds of music, if you plan to be with us all year, please come out for the tryouts, for there won't be another opportunity for the rest of the year."

The club meets regularly Monday and Wednesday nights during the year from 6:30 to 8 p.m.

With the appearance of co-eds on the Cal Poly campus there will be formed a Women's Glee club and other musical groups. Because of deep-rooted tradition and other obvious reasons the Men's Glee club will remain "all male."

From all indications, the Col-

legians should be in good shape to start playing fairly soon for the college dances. Try-outs will be held the same nights as the glee club. This year many spots will have to be filled. They include drums, guitar, bass, piano and trumpet.

The marching band try-outs will be announced at a later date. A big band is sought to be on hand for the first home football game. Director "Davy" urges anyone who plays an instrument to come out for the band.

## All Freshmen Invited To Orientation Camp

Something new for the freshmen — an orientation camp at Rancho Marina at Cambria Pines — is planned for four days, Sept. 17-20.

Bill Walsh, in charge of the event, says the purpose of the camp is to acquaint incoming freshman with the activities, student government and clubs on campus and urging new students to participate.

The program will consist of a series of informal discussion groups headed by various student leaders, a night program with movies, entertainment and dancing.

The camp will be for four days and will last for one day for each group of 90. Groups will arrive in the morning and will leave the following morning. Adequate facilities for freshmen girls will be provided.

"All freshmen are urged to attend so they can learn about Poly activities and meet new friends," invites Walsh.

In 1955 the State Board of Education authorized Cal Poly to grant the bachelor of science degree for completion of the four-year curriculum.

# PENNEY'S

ALWAYS FIRST QUALITY

Teach your budget a lesson in thrift!

Shop Penney's for everything from top to toe...

for study or playtime... whether your scholar's

bound for college or kindergarten!

## BACK-TO-SCHOOL NEEDS

BIGGEST SWEATER BUY OF '55...

now even  
better at  
new low  
Penney  
price!



## TOWNCRAFT® INTERLOCK ORLON® SLIPOVERS—16 FASHION COLORS!

Now at Penney's spectacular new low price it's easy to own a wardrobe of Orlons to go with all your important fall outfits... and Penney's has every color you need! You'll enjoy the warmth and comfort of this fine interlock Orlon... its easy care, too! Your Towncraft rinses quickly, dries without fuss... with no shrinkage problem!

4<sup>98</sup>

- charcoal gray    ● charcoal brown    ● light gray    ● light green
- light blue    ● peacock    ● camel    ● maize    ● white

## SPECIALIST

In home and auto  
Radio Repairs

FREE tube testing

PARTS for all makes  
radio and television

"Everything in Electronics"

Bill's

RADIO SERVICE

1229 Monterey Phone 4061

## NOW IN DECORATOR COLORS!

THE NEW

Remington

Quiet-riter

MIST GREEN • DESERT SAGE  
WHITE SAND • FRENCH GRAY

Only \$1 A Week  
after small down payment



GABBY BOOK & STATIONERY

1040 CHORRO ST.

PHONE 867-W

WE GIVE THIRTY SHOPPER STAMPS ON ALL SPECIALS



## Want Anything? Store Hours Listed

What do you need? Want a book for Eng 104 or a cup of coffee and doughnut for a coffee break? You can get it at the El Corral student store or fountain.

Most of the articles that a student needs from paper and books to toilet articles and cigarettes will be found in the student store and the fountain features the "only 5 cent cup of coffee left in California," guesses Duke Hill, El Corral manager.

The hours of El Corral this fall will be: bookstore—Monday through Friday, 8 AM to 4:30 PM, Saturday, 8 AM to 12; fountain—Monday through Friday, 7:30 AM to 4:30 PM and 7:30 PM to 10:30 PM, Saturday, 7:30 AM to 4:30 PM.

A numerical shelf and book directory system for locating books is being initiated this fall to facilitate getting the right books for the courses you take. To find the books you need all you have to know is the number of the course.

With our method of having used books at the end of the quarter the average cost of the use of a book for one quarter is \$1.35, but Hill added, "I recommend keeping reference works and books in your major area."

It is the policy of El Corral to help student activities, outside purchases may be made through the store for class and club needs. I will welcome any suggestions concerning the store and fountain says Hill.

## Prize News Pictures Will Be Shown On Poly Campus

The 1956 "News Pictures of the Year," a traveling exhibit sponsored by the National Press Photographers Association and Encyclopaedia Britannica, will be shown on the Cal Poly campus April 22 to May 8, 1957.

The local show is under the direction of the NPPA—Cal Poly chapter. Harvey Kidder is president.

The Walter F. Dexter Memorial library subscribes to 687 periodicals ranging from the Aberdeen Angus Journal to the Yale Review.

Over half of Cal Poly's students live in off-campus facilities.

The Walter F. Dexter Memorial Library, completed in 1949, has seating capacity in the reading rooms for about 15 per cent of the student body.

## EL MUSTANG

It is permissible for a student at Cal Poly to have two majors indicated on his degree if the complete requirements of both curricula have been met.

Friday, September 12, 1956

PAGE 9

Cal Poly's San Luis Obispo campus can accommodate a total of 1,087 single men students in on-campus housing units.

The swine unit has fourteen-unit central farrowing house, 18 double-unit colony houses, five boar units, 16 project feeder units, and 80 acres of pasture.

## A Little Story about Southern Fried Chicken

### CHAPTER 1

When I was a boy in the country I really loved fried chicken.

It was cut into small pieces, such as the breasts, thighs, and drumsticks, that was easily eaten with the fingers. It was cooked done through and through, and I never heard of such a thing as having to eat it with a knife and fork.

After I grew up I came away to the city to live, and began eating in restaurants. I started finding out things about fried chicken that I never knew before. I learned how awful it tasted when it was raw in the middle and burned on the outside. I learned all about how it could be cut into big halves and quarters, and I was saddened when I never saw my favorite pieces anymore.

Then I commenced courting and began getting fancy ideas. I heard about a person named Emily Post, who was supposed to know all about what country boys should not do when they come to the city to live. Somehow, I got the idea that fried chicken was supposed to be eaten with a knife and fork.

That was as much as I could stand. I gave up completely. I bade farewell to my favorite food and never again ordered it in a restaurant.

### CHAPTER 2

Now once again I am enjoying chicken. Here at the Baywood Lodge Restaurant we are cutting it up just like they did at Aunt Lizzie's when I was a boy . . . small pieces . . breasts, thighs, and drumsticks. We are cooking it to a golden brown, done through and through, and it is really good.

Frankly, I don't know for sure what certain books may say on the subject of eating chicken with the fingers, but I don't care in the least anymore. I have gone back to eating it just like I did in Hawkinsville, before I left home and came away to the city to live.

Therefore, when we serve it to you here at the Baywood Lodge Restaurant, we want you to remember that fried chicken was never, never, meant to be eaten with a knife and fork.

We want you to know it is our sincere wish that every patron of the Baywood Lodge Restaurant be served the same quality food, and shown the same consideration and hospitality as if you were a guest in our own home.

Paul and Thelma

## BAYWOOD LODGE RESTAURANT

4 p.m. to 9 p.m. Weekdays, Closed Mondays  
Sat., Sun., and Holidays—12 noon to 9 p.m.

# Cal Poly Gift Headquarters Since 1934

## WATCHES

Clarence Brown is the  
Authorized Agent for—  
Omega - Longines  
Bulova - Hamilton  
Elgin - Waterproof  
Priced from \$19.95

Check  
Clarence Brown's Ads  
for each week's  
Mustang Special

## This Week's SPECIAL

FREE Gents  
Wedding Band with  
any Wedding Set—  
Regardless of  
price

## Credit Terms

- Nothing Down
- No Interest or  
Carrying Charges
- Buy As Low As \$1 a Week

"Clarence Brown Always a Cal Booster—Buy Where You Always Save"



TOP ATHLETES . . . Leading athletes in nine sports are shown above with the Clarence Brown trophy. Standing, left to right, are Ernie Hall, basketball; Clive Remund, baseball; Pete Cutline, swimming; Jim Cox, football line; Stan Gerrie, representing Brown's jewelry; Tom McFadden, golf; Ray Hughes, Cal Poly athletic director. Kneeling same way, are Bob Hellron, track; Jack Del, wrestling; Perry Jeter, football backfield; Frank Leduc, boxing, and Vic Bowker, tennis. Names of the stars will be engraved on the trophy.  
(CP News Bureau by Peebles)

## DIAMONDS

Clarence Brown carries only  
the finest quality Blue-  
White Diamonds—and  
SELLS THEM FOR LESS

Shop at Clarence Brown's  
where you find the finest  
in Diamonds, Watches,  
Shavers, Appliances, Sil-  
verware, Birthstone Rings  
and all Gift Items—

We give the fullest Guar-  
antee with all our pro-  
ducts—Feel free to come  
in to our store and look  
around—with no obliga-  
tion to buy.

# Clarence Brown

San Luis Obispo's Leading Credit Jeweler  
862 Higuera street Phone 1312

Buy Where  
You Receive  
"A.A."  
Green Stamps



## Bookstore Changes Ease Problems at Rush Periods

"Getting in and out of the bookstore during the rush period of new quarter should no longer be a problem to anyone," says Duke Hill, manager of El Corral bookstore.

"With our new arrangement of the store, we can serve three times as many students as before," he said.

The store has been arranged with all aisles now running lengthwise with the length of the store, and new counters that take less aisle space and display more merchandise. This system permits long and

wide aisles, with more walking space for all. These are but a few of the many improvements made in the bookstore this summer to aid the plight of the student.

Another congestion reliever, will be a new book list, now being printed in the Poly Printing department. The book list will contain information regarding author, instructor, course number, location of book in the bookstore, and the all-important price.

Hill believes that preparation of this list will relieve the bookstore

clerks from answering 10,000 questions, and save time for students when they come to buy books.

Good news to all students, will be the extension of the bookstore's policy to maintain a 20 per cent discount from retail price on as many articles as possible that are sold to students.

Hill also wishes to inform all that the bookstore is in operation for the benefit of the student body, and that he and his staff are open to all constructive criticisms from anyone wishing to offer them.

## LITTLE MAN ON CAMPUS by DICK BIBLER



NOW I KNOW WHAT THEY MEAN BY HIGHER EDUCATION!

# GallenKamp's

Shoes for the Entire Family

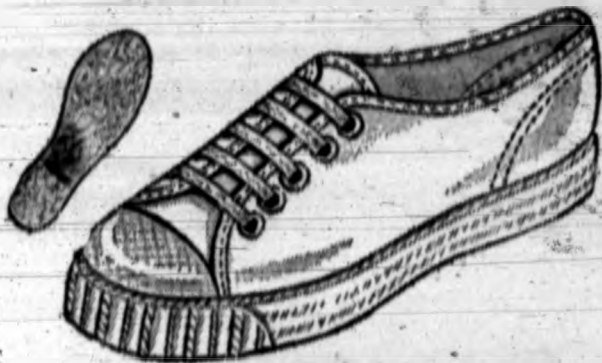
Extends a Hearty  
**WELCOME**  
to the New Cal Polyite

COED or COLLEGE MAN  
Campus Work, Play or Dress  
SHOES FOR EVERY OCCASION

## Score with GallenKamp's Gym Shoes!



So light you'll think you're barefoot!  
So springy you'll jump for joy!



**WOMEN'S AND GIRLS' LACE-TO-TOE GYM OXFORD**

Five-eyelot lace-to-toe gym oxford with cushion insole, arch feature, molded crepe sole and heavy canvas uppers. In white only. Sizes 3 1/4 to 10. Children's sizes 11 1/4 to 8.

**1.99**

**MEN'S AND BOYS' "CHAMPION"**

Cushion heel, arch features, sure-grip treads. Heavy canvas uppers, ankle and toe guards, ventilation eyelets. In black or white. Boys' sizes 12 1/4 to 2. Youths' sizes 2 1/2 to 6. Men's sizes 6 1/2 to 12.

**2.99**



**MEN'S AND BOYS' "KAMPWOOD"**

Balanced for speed and action with suction cup soles, heavy duck canvas uppers, reinforced toe guard, ankle guard and air vent eyelets. In black or white. Boys' sizes 12 1/4 to 2. Youths' sizes 2 1/2 to 6. Men's sizes 6 1/2 to 14.

**4.99**



# GallenKamp's

Shoes for the Entire Family

Higuera at Morro St.

Phone 1971

Open Thurs. 'til 9 p.m.

THERE ARE ALWAYS MORE MILES TO A GALENKAMP!

The Kellogg Arabian Horse Ranch near Pomona, now known as the Kellogg unit, was donated to Cal Poly by the Kellogg Foundation for the advancement of practical education and for the perpetuation and improvement of the Arabian horse breeding program of America.

## Real Opportunity In Agriculture Says Bureau Official

"There is a very real opportunity to live a successful and prosperous life in agriculture—and very little probability of making a million dollars," says Allan H. Kline, immediate past president of the American Farm Bureau Federation.

Kline, an Iowa farmer who for seven years headed the nation's largest voluntary farm organization with more than 1,600,000 members recently spent two days on the home campus of Cal Poly instructing and speaking to some 800 California Farm Bureau staff members holding their four-day annual statewide institute here.

"A young person who has the determination to go into agriculture, and to take the training necessary to do his job well, has a real opportunity to be of service to his country and to enjoy a very satisfactory life," Kline asserted, "but anyone who thinks it is going to be easy had better go into something else."

The Walter F. Dexter Memorial library contains over 58,000 volumes.

## TIRES

NEW USED

Indifferent  
Electrical Recapping  
Infra-Ray Repairs  
Truing-Balancing

S & H Green Stamps

Come in today!

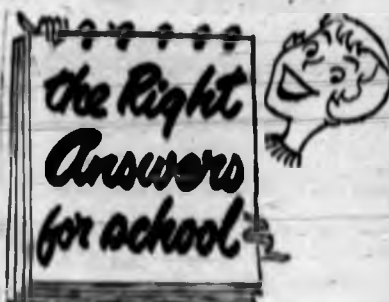
**Q.K. Rubber Millers**

1413 Monterey St.

"By the Railroad Bridge"

## Welcome Frosh

drop in to  
**El Corral**  
for →



## Your "School Needs" Hdqtrs

- Stationery Supplies
- Laundry Bags
- Desk Lamps
- Cosmetics
- Shaving Needs
- Souvenirs
- Confections

SCHOOL OPENING SPECIAL  
**BOOK RACKS 97c**  
\$1.25 Value—Wrought Iron

Also visit El Corral Coffee Shop for a snack, coffee or a sundae

# El Corral

Bookstore and Coffee Shop

Across From Each Other in  
Basement of Administration Building



# ROTC Enrollment May Be Largest In Its History

One of the largest enrollments in the four-year history of ROTC at Cal Poly is expected when fall registration is completed Monday, according to ROTC department staff members.

Headed by Col. P. A. Loisel, professor of military science and tactics, the department has received national recognition the past two years for accomplishments at the annual Fort Lewis, Wash., summer camp.

**Invites Students**  
"Being able to enter the armed forces in a position of leadership and responsibility equal to or greater than a person will hold in his chosen field is the most compelling reason for a college student to enroll in and complete the ROTC course," says Col. Loisel. The colonel has extended a standing invitation to all students to visit the ROTC office and discuss the program. The department is located at the northern rear of the library.

Col. Loisel further points out that "as a future college graduate a person will want to use his education and abilities to the fullest extent; and this goal can be achieved by receiving during his college years the training necessary to become an officer and leader."

Inasmuch as ROTC is a four-year course, one must enroll in the program upon entering college unless he has had some active service or prior ROTC training, the colonel emphasized. At Cal Poly ROTC is an elective course for which credit toward graduation is given. The general military science curriculum offered here allows a person to choose a commission in almost any branch of the army, Col. Loisel reports.

By agreeing to complete the entire four-year course, one may be granted a deferment from the draft at the end of the first college quarter if a "C" average is maintained and a minimum of fifteen units is carried by the student. As long as a student remains in good standing this deferment assures the student the opportunity of completing his college work before being called for active duty in the armed forces, the ROTC head concluded.

Freshmen and sophomores are required to train three hours a week—two classroom instruction and one drill—while upperclassmen must take four hours of instruction and one hour drill. At Fort Lewis when the Poly ROTC contingent was named the number one school representative in the Sixth Army area.

Regular Army officers and non-commissioned officers serving on the Military Science and Tactics faculty are: Col. Loisel, Major Earl W. Fletcher, and Captains John Q. Arnette and Roland A. Kline; MSgt's John W. Ponkow and Charles E. Plath, and SFC Henry Bradley.

Between the junior and senior year six weeks' attendance at the Fort Lewis, Washington, summer camp is required, Col. Loisel said.

The colonel stated textbooks and uniforms were furnished, and during the final two years of the ROTC course, the student receives approximately \$27.00 a month under the training program. Five cents per mile is also paid the student for transportation to and from Fort Lewis summer encampment besides about \$115 in pay.

## Security Officer Asks Student Cooperation

In his annual request to Cal Poly students to observe traffic regulations, Robert C. Krag, head security officer, wishes to call to the attention of all students, that many new are now in effect, and must be observed by all campus drivers.

"With 4,000 students, and 3,000 cars on campus this year," says Krag, "We expect to have our hands full, and we shall be needing the cooperation of the student body."

Krag also pointed out that no students are allowed to park in areas where the signs indicate staff, visitors or one hour parking. Students parking in these areas will be issued citations.

Any student who receives three traffic citations during any single quarter will be reported to the dean of men for disciplinary action.

Fines for traffic citations are usually 50 cents and \$1 and \$2 fines for parking in front of fire hydrants.

Any student feeling that he should be given special considerations regarding on-campus driving or parking, due to medical reasons, may discuss the problem with Dr. Earl Lovett at the health center who issues "privileged decals," Krag explained.

Upon graduation from college and successful completion of the ROTC course the student will be called to active duty as a second lieutenant. Regular army commissions are offered each year to a limited number of outstanding senior ROTC students who wish to make the army a career, the colonel pointed out.

**Four Companies**  
The Poly unit of ROTC at present numbers 175 men, composing four companies. In recent years the local group has taken high honors at various functions, the latest being won this past summer.

### Rubber Shower Sandals

\$1.25

&

\$1.95

### Unusual GIFTS

Baskets

Bamboo Shades

Grass Rugs

**AH LOUIS STORE**

800 Palm Ph. 592-J

We Specialize In

**24 HOUR**

**Photofinishing Service**

**We Have a Complete Assortment of**

- FILMS
- CAMERAS
- FLASHBULBS
- ACCESSORIES

**CAL PHOTO SUPPLY**

999 Higuera Ph. 773

## MAGAZINES

Magazines at Many Popular reduced rates to students

Time \$3.00—1 year  
Life \$4.00—1 year  
Sports Ill. \$4.00—1 year

Magazines for Men and Women

James S. Allen  
Box 526



**College requirements**  
FOR ENGINEERS!

## SLIDE RULES

Post Versalog 10 in.-Reg \$26<sup>50</sup>

Model 1460 with leathercase Now \$22<sup>50</sup>

Post Versalog 10 in.-Reg \$22<sup>50</sup>

Mod. 1460 w/Belt Loopcase Now \$19<sup>50</sup>

**BAMBOO Most Complete Slide Rule**

Here's a schoolbag full of **WONDERFUL BUYS**



Book Ends—Student Desk Special \$1 & \$1<sup>50</sup>  
Desk Pads Small—Med—Large \$1<sup>75</sup>  
with Blotters A \$3.50 value



Latest in Pastel Filler Paper—See Our Specials—College Rulings

## TYPEWRITERS—PORTABLE

\$1 PER WEEK—WHY RENT

OWN IT—IT'S CHEAPER

SEE OUR AD ELSEWHERE IN YOUR PAPER

**Coeds...** 3 Ringbinders—real bargains  
Pastel Colors—Charcoal, Pink, Blue, White  
Green, Red, Ginger, Brown—See Girls!  
Starting at \$2.00

**Student File Cabinets 3 Sizes**  
All Metal—Indexed—Locks—Save Your Important Papers—  
Split Price with Your "Roomie" \$4<sup>95</sup> 5<sup>50</sup> 5<sup>95</sup>

**Book Racks - just desk size** Black—Chrome  
Brass—These are Practical Book shelves \$1.98

**Pencils** Templar Brand—Reg 7c each 3 for 10c  
**Ball Point Pens** Name Brands—Reg \$1.65 79c  
**Pencils** Pedigree—with Sharpener doz. 39c

**T-Squares Drawing Boards Triangles**

**Dictionaries - Websters - American Collegiate**  
Spanish Thesaurus—Pocket and Desk  
Size Dictionaries—Latest Editions

See Our Specials  
Drawing Papers—Supplies—Instruments

**VEMCO BOW COMPASS 6" \$3<sup>25</sup>**

**Brief Cases—Leather—Plastic—Best Buys in Town**

**Bibles—All Sizes—Prices—Missals—Medals**

**MANY MORE SPECIALS**

## GABBY BOOK & STATIONERY

1040 Chorro St.

Ph. 667-W

We give Thrifty Shopper Stamps On All Specials





**DOWNTOWN**  
Chorro at Marsh St.s

# RILEYS



**Furniture Dept.**  
2211 So. Broad St.

**DEPARTMENT STORE**

## WELCOMES YOU!

Welcome to San Luis Obispo! We hope you enjoy the same hospitality everywhere as Rileys will always extend to you. We're sure you will appreciate the **PERSONALIZED SERVICE** and **COURTESY** which we have extended to our friends and customers for the past 69 years. Come in any time and browse around. It will be our pleasure to meet and greet you.

*we invite you to come and see the  
most beautiful store in Central Coastal Calif.*

### FEATURING:

- **MEN'S FURNISHINGS**
- **WOMEN'S and CHILDREN'S APPAREL**
- **FURNITURE**
- **COSMETICS-JEWELRY-ACCESSORIES**
- **LINGERIE-FOUNDATIONS-HOSIERY**

Nationally Advertised Brand Names with a  
fine reputation at popular prices

### 3 CONVENIENT CREDIT PLANS . . .

1. Regular 30 Day Charge (Payable upon receipt of statement)
2. Permanent Budget Account (6 month revolving charge)
3. Club Account (12 to 36 month contracts for major purchases)

**WE'LL CASH YOUR CHECKS ● WE'LL GIFT WRAP FREE**

*You'll always find Friendly, Courteous sales girls*

**MAKE YOUR DOWNTOWN MEETING PLACE:**

# RILEYS

PHONE 769

**DEPARTMENT STORE**  
Chorro at Marsh

**OPEN EVERY THURSDAY NIGHT UNTIL 9 P.M.**

**Park Free in our lot at Chorro and Pacific Sts.  
FREE DELIVERY IN S.L.O. CITY**