

# Cal Poly Report

Vol. 33, No. 72 Thursday, May 26, 1983

## Report from task force on reorganization

A copy of the report of the Task Force to Study Reorganization of the University begins on page 3. To initiate discussions of the report, a first meeting to review recommendations has been scheduled for 11 am Thursday, June 2, in UU 220. Written comments and questions regarding the recommendations are encouraged and should be submitted by Tuesday, May 31, to the office of the Vice President for Academic Affairs (Admin. 305). The Task Force will address both written and oral questions at the first meeting and at subsequent open hearings, which will extend into the 1983-84 academic year.

## Foundation Board officers chosen

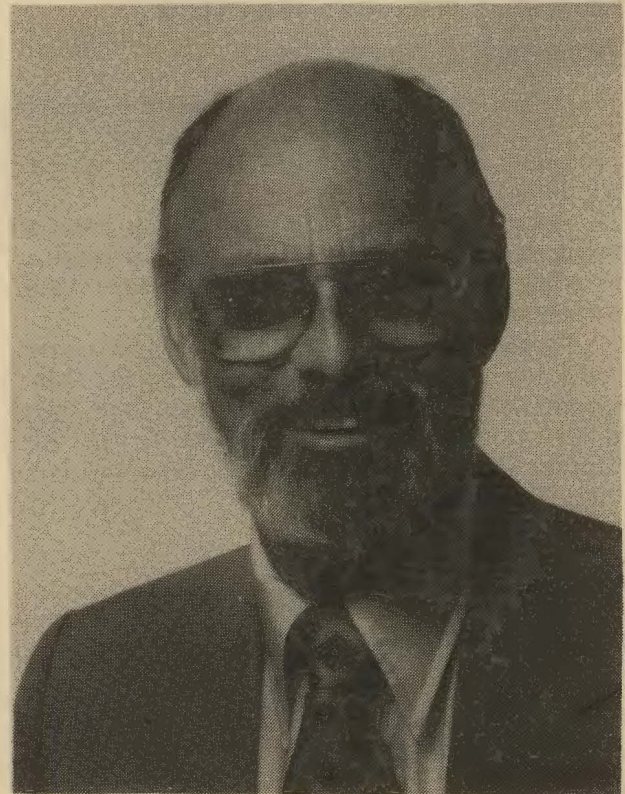
Howard West has been elected chairman of Cal Poly Foundation's Board of Directors. The university's associate executive vice president will serve a one-year term as chairman of the nine-member board. He has been a member of the board for the past four years.

West, who had been secretary-treasurer of the board since 1980, succeeds Dale W. Andrews as chairman. Andrews, whose intention to retire from his duties as executive vice president of Cal Poly in July was announced earlier this month, will continue as a member of the board until his retirement.

Elected to serve as officers of the foundation with West were Tomlinson Fort Jr., vice chairman, and Lark P. Carter, secretary-treasurer. The board re-elected Carter and Lezlie Labhard (Home Economics) to new three-year terms as members of the board. George Soares of Sacramento was re-appointed as community representative on the board.

## Graduation list available

A listing of "Applicants for Graduation" has been sent to each school dean's office and is available for review by the faculty. If for any reason, academic or otherwise, an instructor feels that a person on this list should not be graduating, the instructor must state reasons in writing to the Registrar at least two weeks before Commencement.



*Robert G. Valpey*

## Engineering dean announces retirement

Robert G. Valpey, dean of Cal Poly's School of Engineering and Technology for the past 11 years, announced he will retire from the position and full-time duties with the university Aug. 14. He will remain as a part-time faculty member in the Aeronautical and Mechanical Engineering Department.

Valpey came to Cal Poly in 1972 from California State University, Fullerton, where he founded the School of Engineering and served as dean from 1966 to 1972. Previous academic experience included engineering faculty positions at both the U.S. Military Academy and the U.S. Air Force Academy. He is a retired U.S. Air Force officer and holds both the Army Commendation Medal and the Air Force Commendation Medal, both presented for engineering design and development.

Valpey earned his doctorate from the University of Illinois in theoretical and applied mechanics, a master's in mechanical engineering from University of Colorado, and bachelor's degrees from Cornell University in mechanical engineering and the U.S. Military Academy at West Point in military science and engineering.

Throughout his tenure at Cal Poly, Valpey has worked closely with the private engineering sector and the state educational system.

An acting dean of the school will be named while a nationwide search is conducted for a successor.



## Singing waiters needed for senior breakfast

Deans, associate deans and department heads are reminded that their singing and serving talents are needed at the Senior Breakfast to be held Saturday, June 11, in Chumash Auditorium.

Volunteer waiters will meet at 7 am in the Staff Dining Room for briefing, breakfast and practice. Breakfast will be served to the graduates at 8:15 am in Chumash.

Those who attend the breakfast will be guaranteed access to a reserved seating area for the Commencement ceremonies in Mustang Stadium. Participating administrators should call the Activities Planning Center, ext. 2476, by Monday, June 6.

## Memorial Day weekend food service hours

Friday, May 27

Normal schedule, except Vista Grande Cafeteria will close after lunch.

Saturday and Sunday, May 28 - 29

*University Dining Room*

Breakfast .....	8:30 - noon
Lunch .....	12:15 - 2 pm
Dinner .....	4 - 7 pm

*Vista Grande Restaurant*

Saturday .....	11 am - 8 pm
Sunday .....	10 am - 8 pm

Monday, May 30

*University Dining Room*

Breakfast .....	8:30 am - noon
Lunch .....	12:15 - 2 pm
Dinner .....	4 - 8 pm

*Burger Bar* .....

*Vista Grande Restaurant* .....

## Veal sale

Get together with friends, relatives and neighbors and buy delicious Cal Poly milk-fed veal! Raised by the student enterprise - milking doe-veal calf project. Place your order now!

Slaughtered, cut and wrapped:

1/4 carcass (rear quarter) 40-45 lbs .....	\$3.50/lb.
1/4 carcass (front quarter) 40-45 lbs .....	\$2.85/lb.
1/2 carcass 80-90 lbs .....	\$3.25/lb.
Whole carcass 160-180 lbs .....	\$3.25/lb.
Whole or 1/2 carcass (slaughtered) .....	\$2.35/lb.

Contact Colleen Childers, Animal/Veterinary Science Department at ext. 2538 or 2419.

## June 1... a day for good-byes

• Farewell fanfare, a memorabilia exhibit, food and entertainment are planned for a reception honoring Trudy Beck who is retiring as Department Secretary for the Activities Planning Center. Faculty, staff and students are invited to attend the party from 1 to 3 pm on Wednesday (June 1) in University Union 220.

• Sixty-six years of service by two faculty members of the School of Agriculture and Natural Resources will be saluted at a retirement reception Wednesday (June 1). Honored from 3 to 5 pm in the Staff Dining Room will be Howard Brown and Ray Houston of the Ornamental Horticulture Department.

Brown is a former dean of the School of A&NR and former OH Department head, with a total of 40 years service to Cal Poly. Houston has been an ornamental horticulture faculty member for 26 years.



## Retirement party to honor 'many'

A campuswide retirement reception to recognize the large number of Cal Poly employees who have announced an intention to retire will be held on Thursday, June 9, from 3 to 5 pm in Chumash Auditorium.

President Baker has invited members of the Cal Poly community — current colleagues, as well as retired faculty and staff — to take part in the festivities. Plans call for this to be a yearly celebration.

## Jazz night on for Friday

The University Jazz Band, with guest guitar soloist Ron Eschete of Los Angeles, will offer a program of famous jazz standards at its Jazz Night Show at 8 pm Friday in the Cal Poly Theatre. Also appearing will be the Cal Poly Dixie Band.

Tickets are priced at \$4 for the public and \$2 for students. They are available from the UU Ticket Office or from members of the band.

The Jazz Night Show is sponsored by the Music Department, School of Communicative Arts and Humanities, and Instructionally Related Activities Fund.



**To: The Cal Poly Community**

**From: The Task Force to Study  
Reorganization of the University**

Last October President Warren J. Baker appointed us as a Task Force to study reorganization of the university. In his charge to us he stated in part:

"Our goal should be to determine how we can foster a better environment in which knowledge, values, skills and techniques can be acquired by our students to improve their ability to contribute to the quality of their own lives, to provide them with the foundation to pursue successful careers and to encourage them to be a positive influence on society. To achieve this, our programs must benefit directly and in a timely manner from the ideas and knowledge of faculty with common interests. The organization of the university should facilitate the introduction of new knowledge, new techniques and new technology without unnecessary duplication. Any organizational constraints found that limit faculty interaction, communication and development should be eliminated. Broader faculty associations may be necessary to make improvements in programs and to foster faculty professional development, research and scholarship. The university should be in a position to respond with less inertia to new initiatives, to cross-disciplinary and interdisciplinary efforts, and especially to new technology."

He suggested that we begin our work with a review of the strictly academic functions, and then broaden our view to include other activities at the university.

In response to this charge, we have thoroughly reviewed each of the academic departments and instructional schools. Following much discussion and after considering many suggestions, we present the following recommendations for your review.

Our proposed new program alignment affects each of the current instructional schools and reduces the number of schools from seven to six. It has the effect of bringing closer together programs which have similar objectives. It should, consequently, allow greater interaction between these programs and reduce unnecessary duplication. Accordingly, some efficiencies of operation should result. Specific changes suggested for each school, with a brief rationale for each, follow.

### **School of Agriculture and Natural Resources**

#### **1) Add Home Economics**

Home Economics, at land-grant universities, has traditionally been associated with schools of agriculture. Since many Home Economics departments are currently located in schools of agriculture, the contacts and relationships of our Home Economics faculty and students with other universities should be enhanced with the recommended change. Equally, the School of Agriculture and Natural Resources should provide a valuable stimulus. The quality of home and family life is stressed by the Home Economics Department, just as the School of Agriculture and Natural Resources strives to improve our standard of living.

#### **2) Merge the Dietetics and Food Administration Sections of Home Economics with the Food Science Department within the School of Agriculture and Natural Resources**

Some faculty who are currently part of the Home Economics Department concentrate on Dietetics and Food Administration. Since the Food Science Department is part of the School of Agriculture and Natural Resources, there is merit in bringing these faculties closer together. The Food Science faculty concentrating on food processing would then have additional opportunities to work with the faculty teaching the next step in the food chain, and vice versa.

#### **3) Restructure the Department of Natural Resources Management**

The Natural Resources Management Department currently has four curricular options: Environmental Services, Fishery and Wildlife Management, Forest Resources Management, and Parks and Outdoor Recreation. The largest number of faculty have interests in forestry, and a new major program in forest resources has been proposed. If the proposal is approved, we recommend that the name of the department be changed to Forest Resources. Concurrently, the Fishery and Wildlife Management program and faculty should be moved to Biological Sciences. Other faculty currently in NRM and not associated with Forestry should be moved to appropriate departments elsewhere in the university.



## School of Business and Professional Studies

1) *Add Departments of Graphic Communications, Construction, Industrial Technology, Journalism, Military Science, and City and Regional Planning*

There are distributed across the campus a number of programs which, though originating from disciplinary and career concerns, have evolved in such a way that it appears that their major emphasis is on management. Many are similar in that their graduates are trained to take leadership roles in specific industries. It is our conclusion that several such programs are best organized into a group titled "Professional Studies" and moved so that they are in closer proximity to the less specific management program within the present School of Business.

Programs which should be grouped are:

*Graphic Communications.* This program includes design and literary elements but is predominantly a program in the management of the technology of printing.

*Construction.* It is clear from the curriculum of the Construction major that its primary emphasis is on training students to take management positions within the Construction and real estate development industries.

*Industrial Technology.* The comments made above apply also to this program which, in its emphasis on management and business practice, differs dramatically from programs in engineering which emphasize the mathematical and physical sciences as foundations.

*Journalism.* Journalism places less emphasis on management than the programs named above but is vastly more applied and professional in its orientation than are related programs in the school presently housing it.

*Military Science.* This department is small and unique in the university and has been housed within the School of Science and Mathematics for over a decade. While this relationship has been acceptable and beneficial to both parties, Military Science currently emphasizes management and leadership development more than anything else.

*Planning.* The program in City and Regional Planning bears considerable resemblance to programs in Public Administration. While it makes use of the techniques of applied sociology and has significant design elements, it appears that the dominant theme is, again, management.

2) *Rename the School of Business*

Concurrent with the above changes, we recommend that the School of Business be renamed the School of Business and Professional Studies.

## School of Architecture and Environmental Design

1) *Add Department of Art*

We recommend that the Art Department be moved to the School of Architecture and Environmental Design. Art was originally a part of the Architecture program at Cal Poly. The professional emphases within Art on graphic design and photography blend well with the interests of the School of Architecture and Environmental Design.

2) *Transfer Construction to School of Business and Professional Studies*

The rationale for this transfer is discussed above.

3) *Transfer City and Regional Planning to School of Business and Professional Studies*

The rationale for this transfer is discussed above.

4) *Transfer Architectural Engineering to the School of Engineering and Technology*

The rationale for this transfer is discussed below.



## School of Engineering and Technology

1) *Transfer Industrial Technology to School of Business and Professional Studies*

The rationale for this transfer is discussed above.

2) *Add Architectural Engineering and merge it with Civil Engineering*

Structures courses are taught within both the Architectural Engineering and Civil Engineering Departments. Statics and Dynamics courses are taught in the Architectural Engineering and Mechanical Engineering Departments, often with the same text. This situation has caused considerable confusion among students and has led to unnecessary course duplication. The rationale for leaving Architectural Engineering in the School of Architecture and Environmental Design is that communication between architects and engineers is facilitated. Viewed from a different perspective, the present location of Architectural Engineering is an obstacle to interaction between the School of Architecture and Environmental Design and the School of Engineering and Technology since it serves to insulate the Architecture Department. We feel that the future will require a much closer working relationship between these schools, that this relationship will not be limited to structural engineering, and that it will be facilitated by moving Architectural Engineering to the School of Engineering and Technology.





### *3) Consider the Possibility of Merging the Technologies with their Related Engineering Disciplines*

There are two different organizational structures used to house Engineering Technology programs. Some engineering schools group them directly with the corresponding engineering departments, while others have a separate department of Engineering Technology. Cal Poly's Engineering Technology program was formed as an independent department and is still structured that way today. The increasingly tight budget constraints and high enrollments in engineering have led some of those in the Cal Poly community to question the advisability of continuing with the present structure.

Merging the Engineering Technology programs with their related engineering programs might reduce laboratory duplication, improve program identity, increase communication between faculty teaching in related areas, ease the transfer of students between related engineering and Engineering Technology programs, and make it possible to utilize the Engineering Technology and engineering faculty in a more efficient manner. On the other hand, there is concern that the Engineering Technology programs would die if they were merged with their related engineering departments, that ET students cannot efficiently utilize the same laboratories as the same engineering students, and that the differences between engineering faculty credentials and the credentials of Engineering Technology faculty could cause hardships for some faculty members in the Engineering Technology programs.

The programs involved in this issue are highly technical and are all located in a single school that has been active in reorganization on its own. Because of these facts, we believe that this organizational question should be addressed by the School of Engineering and Technology before a decision is made. We thus recommend that the faculty and administration of the School of Engineering and Technology review the present organizational structure of the Engineering Technology programs and consider the possibility of merging Engineering Technology programs with their related engineering programs.



## **School of Humanities, Social Science, and Education**

### *1) Add the Department of Education*

Education traditionally has had an important relationship to the Humanities, Social and Behavioral Sciences, and the Performing Arts. Educational theory, curricular substance and

organization, conceptual formulation, critical perspectives, and research design derive from or in significant ways relate to the above areas of university inquiry. But university organization has not typically fostered strong interaction between education and other university areas. We believe the concept of a School of Humanities, Social Science and Education makes such interaction more likely, thereby serving the professional interests of faculty and the educational interests and needs of students. Furthermore, the projected organization of this school also makes possible a more diverse and creative use of Cal Poly resources to support and to help improve public education.

### *2) Add Liberal Studies Program*

Since Liberal Studies is the degree major which provides a relevant undergraduate education for students entering the elementary school teacher preparation program, it logically and necessarily should be aligned closely to the Education Department as it is in this plan. The major draws heavily on the humanities and social sciences and, hence, a further integrating factor is achieved.

### *3) Add Psychology and Child Development as a Single Department*

The recommended assignment of Psychology to the Social Science group of this school forms a closer tie between Psychology and traditionally aligned disciplines. At the same time, organizational proximity serves to maintain its ties with education. The welding of Psychology and Child Development (including concentrations in both Child Development and Family Studies) makes explicit the related teaching, curricular and program interests which the two groups share.

### *4) Form a Performing Arts Department*

We recommend the establishment of a Performing Arts Department which will include Music faculty from the current Music Department, Dance faculty from the current Physical Education Department, Drama faculty from the current Speech Communication Department, and Theatre staff. The proposed new department would coordinate all the performing arts entities in the administrative areas of events scheduling, facility planning, and curriculum design. This centralized administration process would help eliminate all duplication of efforts and provide consistency and efficiency in the various performing arts programs. It would promote interaction between the performing arts faculty and promote the performing arts as a single entity on campus.

### *5) Transfer the Art Department to the School of Architecture and Environmental Design*

The rationale for this move is given above.



6) *Transfer Graphic Communications and Journalism to the School of Business and Professional Studies*

The rationales for these changes are given above.

7) *Rename the School of Communicative Arts and Humanities*

Concurrent with the above changes, we recommend that the School of Communicative Arts and Humanities be renamed the School of Humanities, Social Science, and Education.



**School of Science and Mathematics**

1) *Add Fishery and Wildlife Management Faculty to the Biological Sciences Department*

The rationale for this addition is given above.

2) *Transfer Military Science to the School of Business and Professional Studies*

The rationale for this transfer is given above.



**Other**

1) *The Place of Physical Education on Campus*

We recommend that the department of Physical Education not be placed within a school at this time. Decisions concerning the role of this department must be made before it is placed within a school.

2) *Clustering of Departments is a Concept Which Should be Considered by the Schools*

A strong motivation for our suggestions has been to bring similar activities at the university closer together and so foster interaction between them. Some specific suggestions have been made with respect to Performing Arts and Professional Studies, and less specific suggestions with regard to Engineering Technology and the related engineering programs. The concept of clustering of similar disciplines within individual schools should be considered by the faculty and administration of each school at Cal Poly.

The recommendations presented here cover only realignments proposed for the instructional schools and teaching departments. They are, we believe, a "package" which can be considered as a unit. Other recommendations will be forthcoming at a later date. While our deliberations continue, opportunity will be given concerned individuals to review and comment on the present proposals in open hearings which will be jointly sponsored by the Academic Senate and the Office of Academic Affairs. These open hearings will extend into the 1983-84 academic year. We will review the comments and reactions, and modify and/or further explain our recommendations as needed, before formulating our final recommendations to the President.

**The Task Force to Study Reorganization of the University:**

**Tomlinson Fort Jr., Chairman**  
**Vice President for Academic Affairs**

**Edward Garner, Professor**  
**Aeronautical and Mechanical**  
**Engineering**

**William Langworthy, Dean**  
**School of Science and Mathematics**

**Adam Littlefield**  
**Associated Students Inc.**

**Paul Murphy, Professor**  
**Mathematics**

**Gene Starkey, Head**  
**Dairy Science**

**Gerald Sullivan, Professor**  
**English**

**Richard Warren, Head**  
**Education**

*Thursday, May 26, 1983*



## CADAM course planned

A CADAM engineering CAD/CAM graphics course is planned for Fall Conference Week, Sept. 12 to 16. The course will run about 4 1/2 hours each day and will be planned around existing Conference Week departmental, school and campuswide meetings.

It is expected that the course will be taught by Phil Banfield, a former CADAM Inc. instructor. The class will provide faculty members with an understanding of system basics.

A maximum of 16 positions are available in the class on a first-come, first-served basis. For more information, call Mark Cooper or Ingrid Fagan at ext. 2347.

## Call for outstanding staff nominations

Nomination forms for the selection of outstanding staff employees for the 1982-83 academic year are still being accepted. If you wish to nominate a support staff employee, please submit the proper completed form to Steven Riddell, Chairman, Outstanding Staff Employee Award Selection Committee, Admin. 413. All forms must be submitted by Friday (May 27). (Nomination forms were included in the May 12 issue of *Cal Poly Report*.)

## Poly professor to sculpt in France this summer

The French government has chosen a Cal Poly landscape architect and sculptor to create a granite sculpture in central France this summer.

Gary Dwyer, an associate professor in the Landscape Architecture Department, is one of 15 artists from around the world selected to participate in a Symposium of Sculpture from July 1 to Aug. 15 in the granite-producing Limousin region. The month-and-a-half-long event is partly sponsored and largely funded by the French Ministry of Culture.

Dwyer is a nationally known landscape sculptor who's beginning to build an international reputation. He said he was the only American chosen from an international field of about 400 applicants.

Each artist is to carve a work from a large block of Limousin granite. Dwyer said he might ask to use several blocks, not just one, to create a series of stones "defining a space." All the sculptures will be done in and around the lake and village of Vassiviere, east of Limoges. They will become the property of the sponsoring organizations, which will pay travel costs and other expenses for Dwyer and the 14 other artists. Each sculptor also is to receive an honorarium.

## Cyber assists faculty exchange program

The California State University announces the development of an Interactive Central CYBER Computer Reference Program to assist campuses and individual faculty members in identifying potential faculty exchanges among the CSU campuses.

Faculty who are interested in putting their name into the central data base should contact Michael Suess, Personnel Office. They will be given a form to fill out, and that information will be put into a central faculty exchange file. This file makes information more accessible so that intercampus and inter-departmental exchanges can be made.

The CSU Faculty Exchange Program will continue to operate under the same procedures as in the past. The home campus will continue to pay its faculty member as if the person continued to work there. The host campus will assume no obligations for the salary of its visiting faculty. No augmentation of compensation from General Fund sources can be made. Any arrangement for the exchange of houses, cars, etc., is strictly between faculty members should they choose to make such arrangements.

If you have any questions, please call Michael Suess in the Personnel Office at ext. 2236.

## GrC Department receives ink-drying equipment

Cal Poly alumni Gene Prete and Don Mallonee, principal officers of Infrared Products Inc., Garden Grove, have given the Graphic Communications Department an ink-drying unit for use in its instructional program. The unit is valued at about \$4,700. A ceremony accepting the piece of equipment was held during Poly Royal April 23. The equipment was custom manufactured to fit the Miehle Favorit offset press in the department's instructional laboratories.

Infrared heaters are being used increasingly by printers on presses as a low-cost, lightweight, compact method of accelerating ink drying.

Stephen Mott and Joseph Truex, members of the Graphic Communications Department faculty, coordinated the equipment donation to Cal Poly with Infrared Products.

## Dates to remember...

Monday (May 30) is Memorial Day. It is an academic holiday for faculty, staff and students, and the campus will be closed except for needed emergency services.

Payday is Tuesday (May 31).



## Dateline

(\\$) - Admission Charged

(!) - Admission Free

### FRIDAY, MAY 27

**Exhibit:** "Mark-Making," the works of artists concerned with the spontaneity and immediacy of making marks, continuing through Sunday (June 12). UU Galerie. Sponsored by the Fine Arts Committee. Public invited. (!)

**Exhibit:** "A Retrospective Exhibit of Drawings, Prints and Watercolors, 1956-1983," the work of Gertrudis O'Neill (Library), continuing through Friday (June 3). Kennedy Library gallery. Public invited. (!)

**Horsepacking:** In the Sierras, continuing through Monday (May 30). Sponsored by ASI Outings. Sign up in the Escape Route. Public invited. (\$)

**Mountaineering Trip:** Snowshoe, cross country ski or hike in the Eastern Sierras, continuing through Monday (May 30). Sponsored by ASI Outings. Sign up in the Escape Route. Faculty, staff and students invited. (\$)

**Rafting:** On the American River. Food, transportation and equipment included. Sponsored by ASI Outings. Sign up in the Escape Route. Faculty, staff and students invited. (\$)

**Film:** "Reds." Chumash Auditorium, 5:30 and 9:30 pm. Public invited. (\$)

**Concert:** University Jazz Band. Cal Poly Theatre, 8 pm. Public invited. (\$)

### MONDAY, MAY 30

**Memorial Day:** Academic holiday for faculty, staff and students.

### WEDNESDAY, JUNE 1

**French:** Those interested in speaking French are invited to join Christine Marchant (Foreign Languages) every Wednesday. Sandwich Plant, noon. (!)

**Film:** "Firefox." Chumash Auditorium, 7 and 10 pm. Public invited. (\$)

### THURSDAY, JUNE 2

**Luncheon:** Annual University Club Spring Luncheon. President's House patio, 11:30 am. Tickets must be purchased by May 31 from Elinor Bullock (ext. 2181), Ethel Spry (ext. 1281), Joan Stadt (ext. 2345) or Sandy Tuttle (ext. 1316). (\$)

**Spanish:** Those interested in speaking Spanish are invited to join Louise Noel (Foreign Languages) every Thursday. Sandwich Plant, noon. Faculty, staff and students invited. (!)

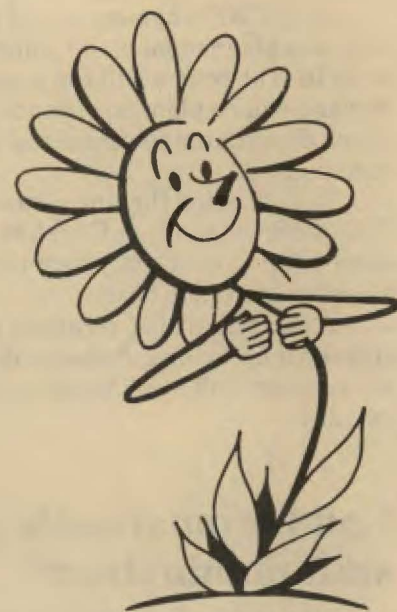
### FRIDAY, JUNE 3

Last day of classes for Spring Quarter.

**Film:** "Rocky III." Chumash Auditorium, 7 and 9:30 pm. Public invited. (\$)

### SATURDAY, JUNE 4

**Golf Tournament:** University Club annual tourney. Morro Bay Golf Club, noon. Current and retired faculty and staff invited. Sign up by Friday (May 27). (\$)



*Cal Poly Report* is published weekly during the academic year by the Public Affairs Office.

Cathy Burt Rathbone (Editor) . . . ext. 2246  
Betty Holland (Graphic Tech.) . . . ext. 2576

Typewritten, double-spaced copy must be submitted for *Cal Poly Report* by close of business the Thursday prior to the next publication.

## Position Vacancies

Candidates for positions on the faculty of the University are presently being sought, according to Donald L. Shelton (Director of Personnel Relations). Those interested in learning more about the positions are invited to contact the appropriate dean or department head. The University is subject to all laws governing Affirmative Action and equal employment opportunity including but not limited to Executive order 11246 and Title IX of the Education Amendments Act and the Rehabilitation Act of 1973. All interested persons are encouraged to apply.

### CLOSING DATE: 6-10-83

**Lecturer, Mathematics, full-time, salary commensurate with experience and qualifications.** Position available for the 1983-84 academic year. Duties and responsibilities include teaching a minimum of 12 units per week of undergraduate mathematics courses including some night classes. Minimum of a master's degree in mathematics; some successful college teaching experience. Position available commencing Fall 1983.

### CLOSING DATE: 7-29-83

**Lecturers, Journalism.** Pool being established for possible vacancies in the specialties of photojournalism, magazine writing, public relations, basic news reporting (print or broadcast). Appointments will be part-time for the 1983-84 academic year, based on a 15-unit teaching load, *salary commensurate with qualifications and experience.*

### CLOSING DATE: 9-18-83

**Lecturers, Chemistry, \$326-355 per unit per quarter, part-time positions.** Duties include teaching lower-division chemistry laboratories. Candidates must be enrolled in Chemistry Graduate Program and have passed Chemistry qualifying exams. Positions available 1983-84 academic year and Summer 1984.

**Vacant staff positions at Cal Poly University and the Cal Poly Foundation are announced in this column and are posted outside the respective offices. Contact those offices (State: Adm. 110, 805-546-2236—Foundation: University Dining Complex, 805-546-1121) for applications and additional position details. Both Cal Poly and the Foundation are subject to all laws governing affirmative action and equal employment opportunity. All interested persons are encouraged to apply.**

### CLOSING DATE: 6-2-83

**Fitness, Training, Health, and Safety Program Supervisor, \$1,558-1,903/month, Foundation.**

### CLOSING DATE: 6-17-83

**Programmer I/II, \$1654-2375/month.** Computer Center. Programming primarily in structured COBOL.

### CLOSING DATE: 6-24-83

**Supervising Student Affairs Assistant II, \$1669-2008/mo.** Placement Center.

**Cal Poly  
Report**