

# Cal Poly Report

Vol. 33, No. 2 September 17, 1981

## Series tickets for 'Vintage' program

Dance, strings, theatre, and Peruvian music will comprise the 1981-82 Vintage fine arts performance series set for the Cal Poly Theatre from October through April, 1982. The public is invited to attend all five performances, featuring the Odyssey Theatre Ensemble, Sequoia String Quartet, Wendy Rogers Dance Company, "Music of the Andes," and Oberlin Dance Collective.

Series subscriptions are available for \$24 for the public and \$16 for students of Cal Poly, Cuesta, and Alan Hancock colleges, which represents a savings of 20 per cent over single ticket prices.

Dates and times for the series are:

- The Odyssey Theatre Ensemble of Los Angeles, performing Elizabeth Swados' "Nightclub Cantata," on Thursday (Oct. 15) at 8:15 pm;
- The Wendy Rogers Dance Company on Friday (Nov. 20) at 8 pm;
- The Sequoia String Quartet, artists in residence at California Institute of the Arts, on Friday (Jan. 22) at 8 pm;
- The Oberlin Dance Collective, from San Francisco, will perform classical and modern dance on Friday (Mar. 5) at 8 pm;
- Sukay, four musicians performing on 35 exotic instruments, will bring the music of the Incan empire in "Music of the Andes" on Thursday (Apr. 1) at 8 pm.

Series subscriptions can be obtained by mail. Checks should be made out to Associated Students Inc., and sent to the Theatre Box Office. Single tickets will not be sold until season ticket orders have been filled. For further information, call the Cal Poly Theatre Box Office at Ext. 1421.

## Iqbal to head Accounting

Following appropriate consultation and recommendations, President Warren J. Baker has appointed M. Zafar Iqbal as acting head of the Accounting Department for the 1981-82 Academic Year. A search for a permanent department head is under way.

## Changes in academic procedures and rules

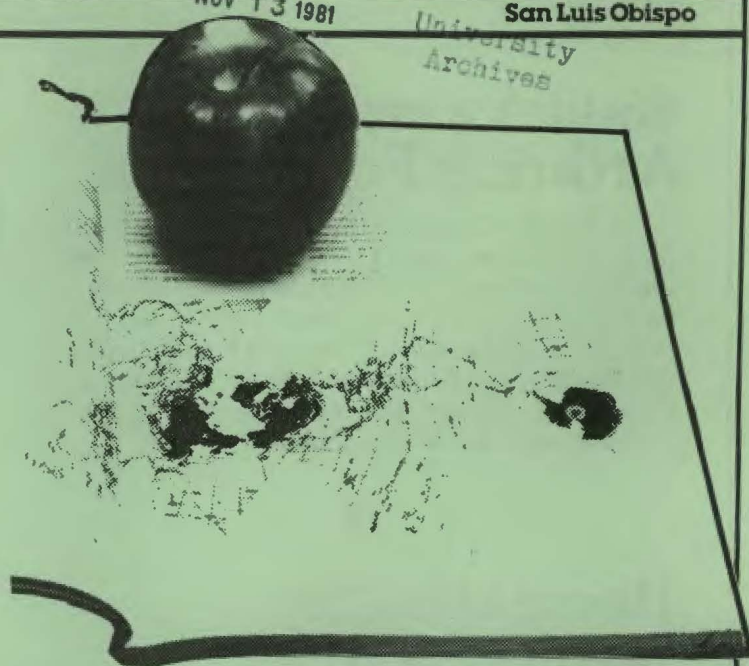
During the summer, several minor modifications were made to grade definitions and the policy on credit/no credit grading. The full text of the changes, available in deans' and department heads' offices, is summarized as follows:

1. Courses required for the student's major which are specified as either major or support courses in the student's major curriculum may not be taken for credit/no credit grading, with the exception of those courses offered on a credit/no credit basis only and those taken as credit/no credit under a previous major (eliminates credit by exam courses).
2. New definitions have been established for the grades "Cr" = achievement of course objectives at a level equivalent to a grade of "C" or better, and "NC" = fails to achieve course objectives at a level equivalent to a grade of "C" or better.

## Lebens back at Poly

Frank T. Lebens has rejoined the university as a member of the academic affairs staff. Lebens, who began his new assignment as academic specialist earlier this month, will work with Malcom Wilson (Associate Vice President for Academic Programs).

Lebens' responsibilities will include academic resource analysis (including budgets, staffing, and facilities), accreditation, and academic publications. He will also assist with academic program analysis.





## \$500 Award from Arthritis Foundation

Cal Poly's Campus Recreation and Intramurals program is the recipient of a \$500 grant-in-aid from the Arthritis Foundation. The grant was made on Aug. 3 by the Southern California chapter of the foundation. The money will be used for equipment which will enable the university to set up a recreational and therapeutic swimming program for its disabled students, faculty, and staff.

## Recreation for faculty/staff

Denny Byrne (Intramural Director) has announced a full schedule of recreation and training activities for faculty and staff for the Fall Quarter. Activities include basketball, tennis, weight training, swimming, racquetball, volleyball, and other special events. A nominal charge will be made for some swimming sessions to defray expenses. For a full schedule, or to make suggestions, call Denny at Ext. 1366.

## Items for sale

The following vehicles and surplus miscellaneous items are for sale by Poly as is, where is, by sealed bid. Vehicles may be inspected at the Transportation Services yard and bids submitted from Sep. 21 through Sep. 24, 8 am to 4:30 pm. Cal Poly reserves the right to reject any and/or all bids: Four 1976 Plymouth Valiant 4-door sedans; one 1962 Ford van; one 1965 Ford van; one 1955 Ford 24-passenger bus; one 1973 Plymouth 4-door sedan; one 1957 Chevrolet pickup; 1964 Cushman scooter; two Clark forklifts; two service station type gas pumps; two "A" frames and various gasoline powered engines.

## Bowling leagues

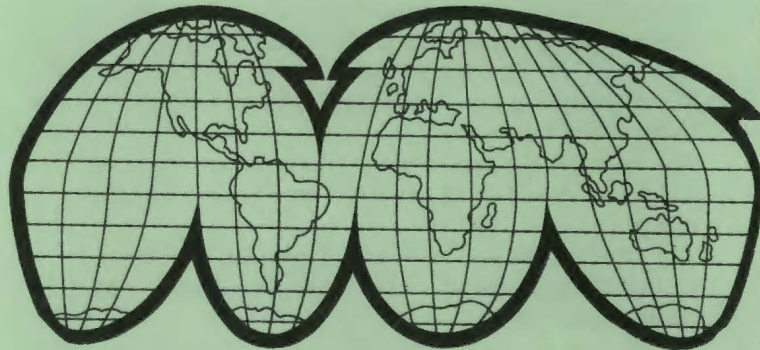
The faculty and staff evening bowling league starts at 6:30 pm Thursday (Sep. 24) at the University Union bowling lanes. Sign-up there or call Walt Wilson, Ext. 2116. Spouses are welcome. The faculty and staff Tuesday noon bowling league starts Sep. 22. Sign-up as above.

## California Tule Elk being studied

Michael T. Hanson (Natural Resources Management) is in the midst of a research project that is expected to extend the life of the tule elk in California's wildlands. Dr. Hanson is using a \$3,720 grant from the State Department of Fish and Game to study the habitat and current status of introduced elk at Fort Hunter Liggett, a U.S. Army base near King City.

Dr. Hanson explained that more than a half-million tule elk roamed Central California prior to the 1849 gold rush, but were reduced to near extinction by hunters and losses of habitat to agriculture. Through relocation to suitable habitats, he said, the state is attempting to preserve and increase the elk's population.

Twenty-five of the large mammals were relocated at Fort Hunter Liggett, but poaching and herd fragmentation have reduced that number to no more than 15. To prevent such problems in the future, Dr. Hanson's project is striving to map potential elk habitats, locate current elk, identify their habitat preference and reproductive habits, and make recommendations for future release sites.



## World Bank sponsored tours led by Poly Prof

An internationally recognized irrigation expert from Cal Poly has been selected by the World Bank to lead a series of agricultural tours for irrigation specialists from India. L. Joe Glass (Agricultural Engineering) is leading four separate tours of senior level irrigation engineers from the state of Rajasthan, India.

Dr. Glass is stressing the importance of practical experience at irrigation sites. His tours emphasize the need for flexibility in delivering water to a field. To familiarize himself with irrigation problems unique to India, Dr. Glass spent time there last year touring that country's irrigated regions.



## Business Leaders Breakfasts slated

The first series of monthly Business Leaders' Breakfasts is slated for the Thursday, Oct. 1, Nov. 5, and Dec. 3, from 7:30 am to 9 am at Vista Grande. The breakfasts, sponsored by Cal Poly Extended Education, the School of Business, San Luis Obispo Chamber of Commerce and the U.S. Small Business Administration, are designed to improve the business manager/owner's effectiveness, leadership, and job satisfaction, and to encourage local businesses to help sponsor their employees' job training. The presentations will be supplemented by group discussion, films, and handouts as appropriate.

The October 1 speaker will be Emile Attala (Head, Computer Science) on "Business and the Small Computer." Cal Poly faculty and staff are invited to attend the breakfasts. Reservations are urged. The cost is \$6.00 or \$15.00 for all three sessions. For information contact Cal Poly Extended Education at Ext. 2053.

## Open enrollment for health plans

There is an open enrollment period from Sep. 15 through Oct. 31 for health benefits plans available to Cal Poly employees. These plans are: ACSUP-American National Insurance Co., Blue Cross/Blue Shield, Cal Western/Occidental, and First Farwest. During this period eligible employees may enroll, change plans or add eligible family members. There are no exclusions for pre-existing conditions or state of health.

All changes will be effective Dec. 1. Active employees are eligible if they work half-time or more and are appointed for more than six months. Information outlining the benefits of the plans is currently being distributed to all employees.

Employees planning to make changes during the open enrollment period must come to the Personnel Office, Adm. 110, by Oct. 31 to complete necessary documentation. For further information, contact Barbara Melvin or Sandra Skinner (Personnel Office), Ext. 2236.

## Health Reps on campus

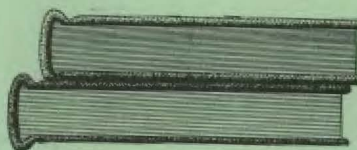
Representatives of the various health insurance companies will be on campus on Tuesday (Oct. 6) from 9 am to 2 pm in Staff Dining Room C to assist with claim problems or answer questions. It will be an informal question and answer session and no appointments are necessary.

## Defensive driver training program

A Defensive Driver Training Program will be held on Monday (Oct. 5), through Friday (Oct. 9). The classes will be scheduled in the afternoon and evening on Monday; morning, afternoon and evening on Tuesday; and the morning and afternoon Wednesday through Friday. The classes are approximately 3½ hours in length.

All staff, faculty and students who have never received defensive driver training cards must attend one session of the class if they wish to drive university vehicles or their own vehicles on university business.

All persons who drive on official state business should attend and successfully complete the course at least once every 5 years. Attendance is by reservation by completing forms available at the Transportation Services Office, Bldg. 71. For further information call Ext. 2451.



## Open house

The Placement Center and the Career Development Center will again combine to host the fifth annual open house. All students, faculty and staff are invited to attend on Wednesday (Sep. 23) 1 to 4:30 pm in Adm. 213 and 211. Attendees will participate in self-guided tours and meet the various staff members from both offices.

Information and services to be highlighted will include the two computerized career planning aides (SIGI and GIS), scheduled career planning workshops, the career resource library, student employment, job seeking aides and workshops, employment bulletins, employer resource material and the popular on campus interviewing program. Seniors who will be graduating during the next academic year are especially encouraged to attend.

## Foundation Board

The Board of Directors of the California Polytechnic State University Foundation will hold a regular meeting on Monday (Sep. 21) at 8:30 am in Adm. 409. This is a public meeting. For further information about this meeting or to obtain a copy of the meeting agenda, contact Al Amaral (Foundation Executive Director) in Fisher Science Hall 290, Ext. 1131.



## Dateline

(S) - Admission charged  
(!) - Admission free

### THURSDAY, SEPTEMBER 17

**Water Polo:** Cal State Hayward.  
Outdoor pool, 1 pm. (!)

### SATURDAY, SEPTEMBER 19

**Women's Club:** Newcomers' Luncheon. Assembly Room, United Methodist Church, noon. Newcomers to the faculty and staff (and wives) encouraged to attend. For more information, call Jean Dettloff (543-9175).

**Soccer:** Pomona-Pitzer. Mustang Stadium, 7:30 pm. (!).

### MONDAY, SEPTEMBER 21

First day of classes.

Late registration begins, \$25 late fee pending approval.

Add/drop period begins.

Auditors may register.

**Women's Volleyball:** University of Oregon. Physical Education Building Gymnasium, 7:30 pm. (\$)

### TUESDAY, SEPTEMBER 22

**Soccer:** University of Santa Clara. Mustang Stadium, 7:30 pm. (!)

### WEDNESDAY, SEPTEMBER 23

**Open House:** Placement Center and Career Development Center, Adm. 211 and 213, 1-4:30 pm.

**Women's Volleyball:** University of New Mexico. Physical Education Building Gymnasium, 7:30 pm. (\$)

### THURSDAY, SEPTEMBER 24

**University Club:** "Cal Poly Football Preview." Staff Dining Room, noon. Faculty and staff invited.

### SATURDAY, SEPTEMBER 26

**Women's Club:** Fall Tea. Inner Garden of the Kennedy Library, 2-4 pm. For more information, call Jean Dettloff (543-9175).

**Football:** Cal Poly Pomona, Mustang Stadium, 7:30 pm. (\$)

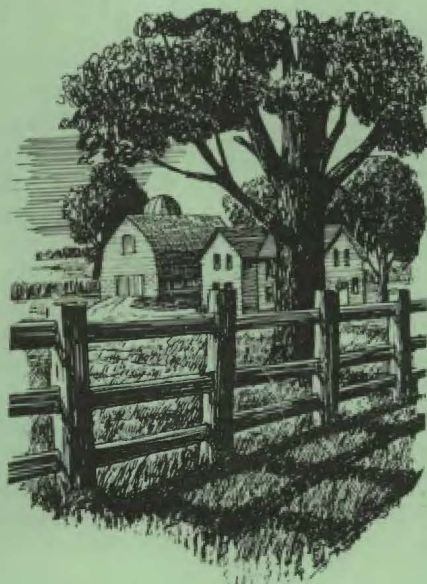
### MONDAY, SEPTEMBER 28

Last day to add a class.

Last day to late register and pay registration fees.

Last day to change from audit to credit status.

September 1981						
S	M	T	W	T	F	S
		1	2	3	4	5
6	7	8	9	10	11	12
13	14	15	16	17	18	19
20	21	22	23	24	25	26
27	28	29	30			



## Who, What, When, Where

Donald Grant, *Architecture*, served as visiting professor at Arizona State University for the first week of Sep. He addressed the faculty of the College of Architecture on the topic, "Future Trends in Architectural Education," and presented lectures for students in the college on the topics, "Dialectic and cyclical models for design thought" and "alternative means for deriving a livelihood in design."

Quintard Taylor, *History*, co-authored an article titled "South By Northwest: An Educational Television Series Designed to Teach Regional Black History," which appeared in the Spring issue of "Integrated Education."

Cal Poly Report is published weekly during the academic year by the Public Affairs Office.

Fred Wolf (Editor) ..... Ext. 2158  
Betty Holland (Graphics) ..... Ext. 2576  
Cathy Burt (Dateline) ..... Ext. 2246

Typewritten, double-spaced copy may be submitted for *Cal Poly Report* by close of business the Thursday prior to the next publication.

## Position Vacancies

Vacant faculty and staff positions at California Polytechnic State University and the Cal Poly Foundation are announced in this column, and are posted outside the respective personnel offices. Contact those offices (University: Adm. 110, 805-546-2236 — Foundation: University Union 212, 805-546-1121) for applications and additional position details. Both Cal Poly and the Foundation are subject to all laws governing affirmative action and equal employment opportunity. All interested persons are encouraged to apply.

### CLOSING DATE: 10-1-81

**Assistant Checker Supervisor:** \$1042-\$1258/month, Bookstore, Foundation.

**Clerk:** \$954-\$1141/month, Bookstore, Foundation.

**Intermediate Account Clerk:** \$1031-\$1215/month, Foundation Food Service  
**Supervising Custodian:** \$1236-\$1464/month, Foundation.

### CLOSING DATE: 10-2-81

**Clerical Assistant II-B/D,** \$1087-\$1283/month, 10/12 pay plan,  
\$906-\$1069/month, School of Architecture and Environmental Design.

**Student Affairs Assistant II,** \$1669-\$2008/month; leave replacement through 8-31-82, Financial Aid.

### CLOSING DATE: 10-8-81

**Lecturer,** \$4904-\$9628/quarter; salary quoted is for full-time and may be adjusted according to assignment, Agricultural Engineering Department, School of Agriculture and Natural Resources.

### CLOSING DATE: 10-12-81

**Housing Manager II-B,** \$1917-\$2309/month, Housing Management Department.

### CLOSING DATE: 11-1-81

**Department Head,** Engineering Technology Department, School of Engineering and Technology.

## Off-campus vacancies

Information on the administrative position vacancies listed below can be obtained from the Placement Office, Adm. 213, Ext. 2501.

University of Wisconsin-Milwaukee, *Vice Chancellor for Academic Affairs*. Application deadline: November 1, 1981.

University of Southern Mississippi, *Vice Chancellor for Academic Affairs*. Application deadline: November 7, 1981.