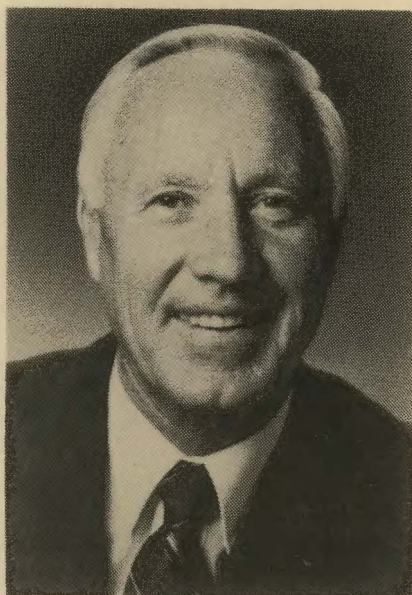


Aldrich to be '86 commencement speaker June 14



Dr. Daniel G. Aldrich Jr., chancellor emeritus of the University of California, Irvine, will be the featured speaker for Cal Poly's 80th annual commencement on Saturday, June 14. Selection of the 67-year-old soil chemist was announced by President Baker.

Including graduates, parents, faculty, and friends, a crowd of 16,000 is expected to hear Aldrich's remarks. The commencement ceremony is scheduled to begin at 10 am in Mustang Stadium.

In 1962 the UC Regents appointed him chancellor of the Irvine campus. He served 22 years in the post, ranking him first in seniority among chancellors in the nine-campus university system. Following his retirement from Irvine he served as acting chancellor of the University of California, Riverside, from July '84 through June '85. He is also a former president of the National Association of

State Universities and Land Grant Colleges.

Aldrich was chairman of a national study on world population and food conducted by the National Academy of Sciences and the National Science Foundation, and he is currently chairman of the Research Advisory Committee of the U.S. Agency for International Development.

He was appointed by the U.S. Secretary of Agriculture to serve as co-chairman of the Joint Committee on the Future of Cooperative Extension. Last year he was appointed to the President's Agricultural Task Force in Zaire, Africa, and he heads the National Academy of Sciences Study of Agricultural Education in the United States at the secondary school level.

Aldrich is an avid fan and participant in a wide variety of sports including tennis, golf, and track. He has won gold medals in discus, javelin, shot put, and the hammer throw in the U.S. Masters Track and Field Championships and in the Senior Olympics.

Aldrich's talk will be his second at a Cal Poly commencement. He was the featured speaker in 1963. He also was chairman of the Western Association of Schools and Colleges (WASC) accreditation team, which visited Cal Poly in 1980.

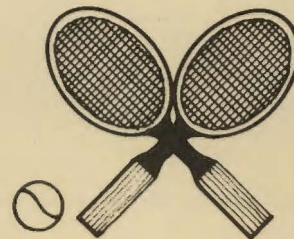
During the 1986 commencement ceremony, degrees will be conferred on over 3000 candidates for bachelor's and master's degrees and technical certificates. The candidates will include all who either have completed course requirements or will during the 1986 winter, spring or summer quarters. About 2500 are expected to attend the ceremony.

Hazardous-waste expert to speak

An international expert on hazardous waste will give an overview of the subject today.

Dr. George Tchobanoglous, a civil engineering professor at UC Davis, is to speak at 11 am in Fisher Science 286.

The lecture is part of the Spring Quarter Engineering and Computer Science Lecture Series sponsored by the School of Engineering.



Men's tennis team wins NCAA title

The men's tennis team won its first national tennis title in a marathon five-hour match last week beating Chapman, 5-4. The NCAA Division II championship was Cal Poly's 25th team title (18 men's, 7 women's), tying them with Cal State Northridge for the most Division II team champions.

Paul Landry and Bob Zoller won the Division II Men's Doubles Championship with a 6-4, 6-2 victory over Neal Berryman and Roger White of Abilene Christian last Sunday for Cal Poly's first doubles championship ever.

Congratulations Coach Hugh Bream and the Mustang netters.

PAYDAY MAY 30

Shakespearean actress will perform May 30

Donna Woodruff, actress, director, lecturer, and solo artist, will perform "Shakespeare's Heroines" on Friday, May 30.

The program, at 11 am in UU 220, will be sponsored by the university's Theatre and Dance, English, Speech Communication, and Philosophy Departments.

The performance will be a study of the wide-ranging emotions and the depth of character of the women in Shakespeare's plays. Associated with San Diego's Old Globe Shakespeare Festival for 10 years, Woodruff is now retired and living in Santa Barbara.

On Thursday, May 29, Woodruff will be discussing and performing scenes from George Bernard Shaw's "Saint Joan" for students in a Philosophy of Religion course. Her presentation will be in Science North 220 at 3 pm.

Pianist Moyer to give concert

The final concert in the Quintessence Series will present the talents of pianist Frederick Moyer at 8 pm on Friday, May 23, in the Cal Poly Theatre.

A "study in contrasts," Moyer is the grandson of a concert pianist. He has been shaking up the classical music world with his fresh and unique approach to the music of the immortals. Moyer sees classical music as having as great an impact on his contemporary audiences as today's popular music.

Born in 1957 in Wayland, Mass., he began studying piano when he was seven years old. He attended Curtis Institute, Indiana University, and completed his studies under Theodore Lettvin, Eleanor Sokoloff, and Menahem Pressler of the Beaux Arts Trio.

At Tanglewood he participated in master classes taught by Andre

Watts and most recently presented a recital at New York City's Merkin Hall in which he played the world premiere of Piano Sonata No. 4 by George Walker, a work he commissioned.

For his Cal Poly appearance, he has chosen to play Sonata in D major, Op. 31, No. 2 by Jan Ladislav Dussek, Four Studies for the Left Hand (1901) by Max Reger, Three Etudes after the Grand Etudes of Paganini by Liszt/Busoni, Sonata No. 4 (1985) by George Walker, and "Pictures at an Exhibition" (1874) by Modeste Mussorgsky.

Tickets for the Moyer concert are \$4-\$7. They are available on campus at the UU Ticket Office and in San Luis Obispo at Cheap Thrills and Boo Boo Records. Telephone reservations can be made by calling 546-1421 between 10 am and 4 pm on weekdays. The concert is sponsored by the Center for the Arts.

'Alarm' concert set for May 30

The Alarm, one of Great Britain's top bands, will be featured in the final presentation of the 1985-86 season of the Concert Committee on Friday, May 30, at 8 pm in the Main Gym.

Opening act for the campus show will be the Long Ryders, a Los Angeles-based group that is becoming widely known for its 1960s-style rock and roll music.

The Alarm has become widely known for its use of anthem songs to raise the social consciousness of its audiences and using acoustic guitars considerably more than most current groups do.

Advance tickets for the concert are available on campus at the UU Ticket Office and at all Cheap Thrills and Boo Boo Records stores. Prices are \$9.75 for students and \$10.75 for adults. Tickets will be \$1 more at the door.

Memorial Day food service hours

Friday, May 23

Normal schedule, except Vista Grande Cafeteria will close after lunch and the Ice Cream Parlour will close at 5 pm.

Saturday, May 24

University Dining Room

Breakfast 10 am - noon

Lunch 12:15 - 2 pm

Dinner 4 pm - 7 pm

VG Restaurant ... 11 am - 8 pm

Campus Store ... 9 am - 10 pm

Burger Bar ... 10 am - midnight

Sunday, May 25

University Dining Room

Brunch 10 am - 2 pm

Dinner 4 pm - 7 pm

VG Restaurant ... 9 am - 8 pm

Campus Store ... 9 am - 10 pm

Burger Bar noon - 10:30 pm

Monday, May 26

University Dining Room

Breakfast 10 am - noon

Lunch 12:15 pm - 2 pm

Dinner 4 pm - 7 pm

VG Restaurant ... 11 am - 8 pm

Campus Store ... 9 am - 10 pm

Golf tournament

Thirty-nine active and retired faculty and staff members took part in the University Club Golf Tournament at the San Luis Obispo Country Club on May 10.

Winners included: Gerry Punches, LaVerne Bucy, Bob Timone, Fuad Tellew, John Richards, Bob Brown, and Homer Hoyt.

CSU commission

A permanent CSU Commission on the Status of Women has been established. In a Long Beach meeting a mission statement and by-laws were passed.

Commissioners from each campus were appointed. The commissioner from Cal Poly is Peggy Lant, English. Nancy Loe, Library Special Collections, is the alternate.

Summer program for children

Poly Trekkers is a summer program designed for children (age 6-9) of students, faculty and staff aged 6-9 years. The program will enhance confidence, team work, motor skills, and conceptual skills.

It will run for six weeks — July 14-Aug. 22. The weekly themes include art, music, camping, science, nature, nutrition, and career awareness. Cal Poly and community field trips are included.

The 9 am through 4 pm program will cost \$60 per week with extended hours of 8-9 am and 4-5 pm costing \$1 per hour. Registration is weekly and forms can be obtained by calling ext. 1267.

Enrollment is limited to 10 children per weekly session and is on a first-come, first-served basis. There is a \$10 non-refundable pre-registration fee for each week.

Bullock party

After 15 years of service at Cal Poly, Elinor Bullock, General Office supervisor, will be retiring on May 30. An open house will be held in her honor on Friday, May 30, from 2-4 pm in Admin. 125. Please feel free to come wish Elinor a fond farewell.

John Madden golf tournament set

The annual John Madden Celebrity Golf Tournament will be held on May 30 at the San Luis Obispo Country Club.

Faculty and staff who wish to participate should contact the Athletics Office as soon as possible (ext. 2866). Something new has been added this year.

Virginia Madden will sponsor a ladies tournament to be played on the same day at the San Luis Bay Inn golf course in Avila Beach.

The entry fee is \$50 per person. Interested ladies are encouraged to form teams and call ext. 2866 or ext. 2525. All levels of play are encouraged as the format of play will be team scramble. There will be several challenges on the course including closest to the hole, longest drive, most accurate drive and more. Entry fee includes one ticket to the awards dinner. Additional tickets may be purchased at \$25 each.

Tickets for the awards banquet and NFL auction are available through the Athletics Office. The dinner will be held in Chumash Auditorium on Friday evening following the day of play. Proceeds from the tournaments go to support athletics scholarships.

Remember phone number on duplicated letters

Please remember to be sure there is a telephone number on correspondence duplicated on letterhead. Unless you give Duplication enough of your office supply of letterhead with your department name and phone printed on it, your letter will be reproduced on "generic" Cal Poly letterhead — no department name, no telephone number. If your job will be done on generic, please include your department name in your signature block and your phone number either in the signature block or prominently in the text.

Alumni wording

For those of you not familiar with Latin, "alumni" is plural and refers either to men only or to men and women. "Alumnae" is the feminine plural, "alumnus" the male singular, "alumna" the female singular. If you're looking for a term to refer to either a man or a woman, try "alum" — which ain't Latin and ain't too pretty, but works.

Commencement activities planned

This year's commencement ceremony will be held at Mustang Stadium beginning at 10 am on Saturday, June 14. All students who either have graduated or will be graduating in the 1986 winter, spring or summer quarters will be eligible to participate in commencement.

Each participating student will be given 5 guest tickets. The university's \$10 commencement fee, which is collected at the Bookstore Grad Centre, is used to defray part of the cost of staging the commencement. In addition to guest tickets, the Bookstore Grad Centre has caps and gowns, commencement invitations, and other items related to graduation. Students should pay their commencement fee prior to May 30 to make certain guest tickets will still be available.

Members of the university faculty are encouraged to honor their graduates by participating in commencement. The Bookstore can assist faculty in meeting their needs for academic regalia. Faculty members who plan to march in the processional should notify their school dean's office. Participating faculty are entitled to one ticket, which will allow a guest admission to the ceremony.

The commencement ceremony in the stadium is followed by school receptions hosted by the dean and faculty of each of the seven academic schools and is held in honor of the school's graduates and their guests.

Fd. Bd. meeting

The Cal Poly Foundation board of directors meeting Friday (May 23) will begin in UU 220, and then move to Adm. 409. The meeting will begin at 9 am.

Ag teacher training grant awarded to department

The Agricultural Education Department will provide specialized training for 223 community college teachers with a \$30,000 grant received from the board of governors of the California Community Colleges.

The Community College Inservice Grant will provide agriculture and natural resources teachers with professional development opportunities related to computers and their use in agricultural education programs.

Included in the project, which will begin in July and continue through the end of the 1986-87 school year, will be seminars, workshops, and individual assistance.

Dr. Joseph E. Sabol, head of the Cal Poly department and director of the inservice project, said this will be the third consecutive year the university has received a grant for support of community college agriculture programs.

Sabol said the new grant will include 18 specific activities designed to meet the needs of community college teachers.

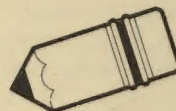
Included will be surveys identifying the nature of the teachers' need for professional improvement, publication of a newsletter, short-term industry internships for selected teachers, and statewide and regional workshops in microcomputers.

Also planned are professional development workshops, local workshops, a statewide midwinter institute, and publication of an additional chapter in the continuing series of Department Management Guides for community colleges.

Sabol said a member of the Cal Poly department's faculty will be employed as coordinator for the inservice training project and will organize, plan, and arrange all of the activities.

In addition, the project will utilize the services of an advisory

committee, the California Agricultural Teachers Association, and the office of the chancellor of the California Community Colleges to help insure that all of the project activities are relevant to community college agriculture programs.



Gutenberg Society makes pledge

The Gutenberg Society has pledged \$10,000 annually to Cal Poly's Graphic Communication Department.

The pledge will make the society a key participant in "Partners in Education," the department's \$1 million endowment fund drive.

The donated funds will be used exclusively for graphic arts education, including physical plant improvements, additional equipment and supplies, faculty and staff training, student scholarships, curriculum and laboratory improvements, and the development of continuing education programs for industry.

The fund drive is intended to bring together individuals and organizations who have benefited from being part of the graphic arts, and who wish to "put something back" to ensure that high-quality programs will be available for developing the future leadership of the industry.

The pledge to Cal Poly is only one of many ways in which the Santa Ana-based society supports education. Others include major contributions to the California community colleges which have graphic arts programs and financial support for faculty members from the community colleges as well as Cal Poly to attend the DRUPA exposition in Dusseldorf, Germany.

Ventura County possible site of CSU campus

Proponents of a permanent location for a University Center campus in Ventura County are being invited to present site proposals at a meeting on Wednesday, June 4.

The meeting, under auspices of the CSU's board of trustees, will be from 10 am to 3 pm in Suite 112 of the present center, 3585 Maple Street, Ventura.

CSU is searching for a site as part of an exploration into establishing a permanent Ventura County facility. The study was requested in 1985 legislation authored by Sen. Gary Hart (D-Santa Barbara) and signed by Gov. Deukmejian.

Since 1974 the CSU, primarily through the Northridge campus, and UC Santa Barbara have conducted upper division and graduate programs at the Maple Street location in leased quarters. Over 2000 students have earned degrees through these programs.

Endowment set by commercial printing company

ColorGraphics Corp., a high-quality commercial printing company, has established a ColorGraphics/Cal Poly: Partners in Education Endowment.

Through its donation of \$10,000, the Los Angeles-based concern has made an important contribution towards the Graphic Communication Department goal of \$1 million in endowments.

ColorGraphics, a state-of-the-art corporation which specializes in high-quality color and commercial printing, employs Cal Poly graduates as well as Cooperative Education students from the university.

\$400 million bond issue gains plaudits

California State University Chancellor W. Ann Reynolds has lauded the \$400 million state general obligation bond issue proposed by Governor Deukmejian.

The measure would include \$87 million for CSU capital outlay projects in 1986, most of which were originally recommended by the Governor in January but have been deferred due to a sharp drop in oil revenues from state-owned tidelands.

Deukmejian's bond proposal, subject to approval by the Legislature, would go before voters in the November 1986 election.

Math team noted

A team of three Cal Poly students was among the semi-finalists in a nationwide competition in the field of mathematical modeling. The team of Daniel C. Cohen, Eliot M. Fried, and Daniel N. Kabat was one of 25 teams receiving a Meritorious Award in the 1986 Mathematical Competition in Modeling funded by the U.S. Department of Education's Fund for the Improvement of Post-Secondary Education.

Who, What, Where, When

Rudy Dressendorfer, *Physical Education and Recreation Administration*, co-authored "Cardiovascular Review" (7th Ed.), Grune & Stratton, 1986, a book encapsulating current research in cardiovascular medicine.

M. Zafar Iqbal, *School of Business*, was a member of the panel on social accounting at the American Accounting Association, Western Regional Meeting, in Costa Mesa.

Karla Walters, *English*, presented a paper at "A Victorian Conference: Meeting the Brownings," held at Southwestern College in Winfield, Kansas.

Roger Swanson, *Enrollment Support Services*, was appointed head of

the national undergraduate admissions committee of the American Association of Collegiate Registrars and Admissions Officers at its annual conference in Baltimore. He also made a presentation to 120 participants on the topic of developing teamwork.

Jack Jones, *Education*, was elected president-elect of the Organization of Teacher Educators in Reading at the 34th annual conference of the International Reading Association in Philadelphia. The organization is a special interest sub-group of professors from around the world concerned with reading research and higher education.

Allan S. Baillie, *Management*, visited Mitchell College in Australia to deliver a series of lectures on various aspects of Japanese Productivity Management. He also reviewed the pedagogical considerations in teaching a capstone course for the Business program with special emphasis on the suitability of computer simulation.

Bill Michaud, *Ag Management*, was appointed to the national FFA Computer Technology Advisory Committee.

Laura Williams Rice and Robert P. Rice Jr., *Ornamental Horticulture*, have written a book, "Practical Horticulture." It was recently published by Reston/Prentice Hall, New York.

Karla Walters, *English*, presented a paper, "Vicarious Vocation: A Victorian Solution," at the first meeting of the Western Association for Interdisciplinary Nineteenth Century Studies at Scripps College.

Gordon Curzon, *English*, has had published by Tabula Rasa Press his first collection of poetry. Titled, "Trinergy," the volume consists of three books -- "American Anthology," "Chicago Memories," and "California and Beyond." This first edition is limited to 400 numbered and signed copies, with art work by Les Gray, and an introduction by Aeronwy Thomas-Ellis, the daughter of Dylan Thomas.

Charles M. Slem, *Psychology and Human Development*, had two co-authored papers presented at the Western Psychological Association annual meetings in Seattle. "Type A Behavior, Gender and Occupational Choice" was co-authored with Susan Shodahl (San Bernadino Valley College), and "The Relationship Between Religious Beliefs and Stress Resistance Personal Hardiness" was co-authored

with Lars Perner, a Cal Poly student.

Donald R. Floyd, *Social Sciences*, has been elected to a two-year term as chairman of the CSU Academic Council on International Programs.

Angie Estes, *English*, has had a poem, "The Iron's Credo," accepted for publication in the fall issue of "Negative Capability."

Leonard Davidman, *Education*, was featured in a symposium on "The Audit Process in Relationship to Effective Schools Research." The symposium took place at the annual meeting of the American Educational Research Association in San Francisco.

Gloria Velasquez Trevino, *Foreign Languages*, presented a scholarly paper at the Second International Congress on "Identite et Cultures Hispaniques Aux Etats-Unis" held in Paris, France. While in France, she also participated in a round table discussion of authors and was one of many fiction writers to read from her creative writings. In addition, Dr. Trevino's writings were discussed by Prof. Marcienne Rocard from the Universite de Toulouse in the panel titled, "Ecriture Feminine et Feministe."

Allan Baillie, *Management*, delivered a paper, "Education: A Primary Determinant of Productivity," at the 5th World Productivity Congress in Indonesia. The Congress is held every two to three years in a different country.

Polly Harrigan, Stephan Lamb, Michael Ramirez, and Deb Sells, *Housing*, presented "An Evolving Commitment to Individual and Group Excellence: The Wellness Challenge" at the 1986 California Association of College and University Housing Officers Conference in Long Beach.

Polly Harrigan and Stephan Lamb, *Housing*, presented "Full Circle: Conceptualization to Implementation," at the 30th annual California Association of College and University Housing Officers Conference in Long Beach.

Colette Cardinet and Lori Moomaw, *Housing*, were awarded the Outstanding Presentation by New Professionals for presenting "New Perspectives on Alcohol Education — Think Before You Drink: Decisions About Drinking" at the 30th annual Conference of the California Association of College and University Housing Officers in Long Beach.

Dateline. . . .

(\\$) - Admission Charged

(!) - Admission Free

THURSDAY, MAY 22

Exhibit: "Pros 'n Cons" features works by professional and convict artists. Continues through May 31. Library. (!)

Speaker: George Tchobanoglous (UC Davis) will discuss "Hazardous Waste Management — An Overview." Fischer Science 286, 11 am. (!)

University Club: Walt Tryon (Landscape Architecture) will discuss "Cultural Landscapes of the Mediterranean." Staff Dining Room, noon. (!)

FRIDAY, MAY 23

Film: "White Nights," Chumash, 7 and 9:30 pm. Continues on Saturday, May 24. (\$)

Concert: Frederick Moyer (pianist) will perform in Theatre, 8 pm. (\$)

Horsepacking: Spend Memorial weekend in the Sierras. Great food, horses, views, hot springs. No experience necessary. Sign-ups and details in the Escape Route, UU 112, or call ext. 1287. (\$)

Summer Trips: Trips to Jamaica and Puerta Vallarta are being offered by Cal Poly Travel Club. Stop by Cardillo/Gulliver's Travel Centre for details, or call 546-8612. (\$)

Backpacking: Hike along trails in Sequoia National Park. Continues through Monday, May 26. Sign-ups and details in the Escape Route, UU 112, or call ext. 1287. (\$)

WEDNESDAY, MAY 28

Film: "Stranger Than Paradise," Chumash, 7 and 9:15 pm. (\$)

THURSDAY, MAY 29

University Club: Rod Neubert (ASI) will discuss "A Trip With Rod Neubert." Staff Dining Rm., noon. (!)

Lecture/Play: Donna Woodruff (actress) will discuss and perform scenes from George Bernard Shaw's "Saint Joan." Science North 220, 3 pm. (!)

FRIDAY, MAY 30

Play: Donna Woodruff (actress) will perform "Shakespeare's Heroines." UU 220, 11 am. (!)

Concert: "Jazz Night '86," featuring the University Jazz Band. Theatre, 7:30 pm. (\$)

Concert: Alarm will perform. Main Gym, 8 pm. (\$)

Position Vacancies

Vacant staff positions at Cal Poly and the Cal Poly Foundation are announced in this column and are posted outside the respective offices. Contact those offices (State: Adm. 110, 805-546-2236 — Foundation: mobile unit near the Fire Department (805-546-1121) for applications and additional position details. Both Cal Poly and the Foundation are subject to all laws governing affirmative action and equal employment opportunity. All interested persons are encouraged to apply.

State

CLOSING DATE: 6-4-86

Clerical Assistant II-A, \$634.50/month; half-time; maternity leave; 6/2-9/19, Student Academic Services.

Custodians, \$7.41/hour, on call - 6/14 - 9/11, Residence Hall Services.

Supervising Public Safety Officer I (Sergeant), \$2357-\$2839/month; hours: shift work, Public Safety, Police.

Readvertisement (change in requirements)

Administrator I (General Office Supervisor), \$1627-\$1936/month, Procurement and Support Services.

CLOSING DATE: 7-16-86

Physician I, \$4792-\$5772/month; 10 months, Student Health Center.

Candidates for positions on the faculty of the university are presently being sought, according to Jan Pieper, director of personnel and employee relations. Those interested in learning more about the positions are invited to contact the appropriate dean or department head. This university is subject to all laws governing Affirmative Action and equal employment opportunity including but not limited to Executive Order 11246 and Title IX of the Education Amendments Act and the Rehabilitation Act of 1973. All interested persons are encouraged to apply.

CLOSING DATE: 6-15-86

Lecturers (part-time), salary commensurate with qualifications, experience and time base, Accounting. Department is seeking to compile a list of individuals who wish to be considered for possible part-time positions in the Fall, Winter and/or Spring Quarters for the 1986-87 academic year. Master's degree required; CPA or CMA, and teaching and practical experience preferred.

CLOSING DATE: 6-16-86 or until filled

Lecturers (part-time), salary commensurate with qualifications, experience and time base, Civil and Environmental Engineering. Possible part-time positions available for Fall, Winter and/or Spring Quarters of the 1986-87 academic year. Duties include teaching courses in geotechnical, transportation and other traditional areas of Civil/Environmental Engineering. M.S. or B.S. with teaching and industrial experience required.

CLOSING DATE: 6-21-86 or until filled

Tenure-Track or Lecturer (full-time), salary commensurate with qualifications and experience, Civil and Environmental Engineering. Possible vacancy for full-time lecturer or tenure-track position, teaching courses in traditional areas of civil and environmental engineering for the 1986-87 academic year. M.S. or equivalent with teaching and industrial experience in civil and environmental engineering is required for lecturer position. Ph.D. or equivalent is required for tenure-track position. Please send resume to: Dr. Stephen Hockaday, interim head, Civil & Environmental Engineering Department.

CLOSING DATE: 7-1-86

Lecturer (full-time for two quarters), salary commensurate with qualifications and experience, Social Sciences (geography). Full-time leave replacement position for Fall and Winter Quarters of 1986-87 academic year. Position requires instruction of five courses per quarter with emphasis upon physical and global geography. Ph.D. preferred; ABD considered. Apply to: Dr. Donald R. Floyd, Social Sciences Department.

CPR

Cal Poly Report is published weekly during the academic year by the Public Affairs Office.

Stan Bernstein (Editor).....ext. 1511
Betty Holland (Graphic Tech)...ext. 1511
Jo Ann Lloyd (Dateline).....ext. 1511

Typewritten, double-spaced copy may be submitted for Cal Poly Report by 4 pm the Thursday prior to the next publication.