



DROP CARD... The last day to drop courses is changes must be made on forms available at the Monday, October 10. After Monday, all program Records Office, Adm. 222. (Photo by Kerr)

Bay Area rioting calls Poly student

The recent racial rioting in San Francisco became more than just a newspaper story to Bryan Gittings when he was called to report to his Richmond unit of the National Guard last Wednesday. Gittings, a Cal Poly student, was summoned because he is a member of the Richmond unit in the Bay Area. The campus police came to his class Wednesday morning after receiving an emergency call for him to report immediately.

He arrived in Richmond about 2:30 p.m. At five o'clock his unit moved out and went to Alameda, where they met with about five other units from the East Bay. From there they traveled to San Francisco by convoy, driving through the riot area to Kezar Stadium. The purpose of the convoy was merely a show of power.

On standby reserve, the men stationed at Kezar served on routine patrols Wednesday evening, Thursday, and Thursday evening. Part of his unit was assigned to the fire station and investigated fires, most of which were false alarms.

As seen by Gittings the riots were mostly "harassment, beer cans, and shouting." There was no real tension, as such, and no incidents between his unit and the Negro rioters.

Blood Bank

Blood and money donations are needed by a former employee of Cal Poly's Administration building.

Mrs. Lois Haugan, sick since May of this year, receives blood transfusions every two weeks. She will be needing them for an indefinite period of time.

All those interested in giving blood for the transfusions or donating money to pay for former transfusions for Mrs. Haugan, please contact Ken Jones, Jones Ambulance Service, 543-2626, for an appointment.

Mrs. Haugan's name and French Hospital, San Luis Obispo, should be specifically credited when the appointment is made.

Army general visits Cal Poly

Major General Ernest F. Easterbrook, Deputy Commanding General of the Sixth U.S. Army, made a visit to this campus last Tuesday.

General Easterbrook conferred with Vice-President Dale Andrews, Clyde Fisher, Dean of Applied Sciences, and Colonel Elmer Baur, Military Science instructor, regarding the ROTC program.

In addition to conferring with administration heads, General Easterbrook talked with cadet leaders regarding their views of the program and how they feel it could be improved.

The ROTC has 773 students enrolled in its program this year. This is the largest enrollment ROTC has experienced and is a 26 per cent increase over last year's enrollment. With over 14 per cent of the male student body enrolled in ROTC, Cal Poly has one of the largest per capita programs in the nation.

It was also noted that this campus' ROTC unit is one of the most active in the Sixth Army area with a Scabbard and Blade honor society, a mens drill team, a womens drill team, a band, a color guard, a pistol and a rifle team and a Special Forces unit.

Moratorium granted on teachers licensing law

A two-year moratorium on changes in California's teacher licensing law to let students find out where they stand has been called for by the president of the Student-California Teachers Association.

Robert Reynolds, SETA president and graduate student in teaching at San Francisco State College, made his plea for a moratorium at a meeting of the Assembly subcommittee on School Personnel and Teacher Qualifications in Garden Grove.

He cited an "opinionnaire" of prospective teachers which showed 73 per cent of those responding are "confused" by constant changes of regulations governing teacher licensing under the 1961 Fisher Act and reinterpretations of its intent.

Last year, according to Reynolds, "we were actually beginning to hear from students who were discouraged with the process of becoming a teacher. It seemed that a credential candidate did not know where he stood

from one term to the next."

"In our judgment, students preparing for other professions are not encumbered by such complex systems involving intricate changes and the need for such extensive counseling services," Reynolds observed. "We would ask why teaching credential candidates must be subject to such complexities and perplexities?"

He also asked that before further changes are made, "a few knowledgeable student-teacher leaders" be called upon for consultant services.



Lane's Plaza Barber Shop

For Cal Poly Students

FOUR CHAIRS

to serve you

next to Jordano's and Thrifty
779 Foothill at Broad

8:30 to 5:30
543-1290

Lane McReynolds
owner



A COMPLETE WESTERN STORE



- Western Clothing
- Saddlery & Tack
- Veterinary Supplies
- Blacksmith Shoes

Open Thursdays
11 a.m. - 5 p.m.

Orders Custom made
belts or purses here

Rio Malo Saddlery

862 Foothill Blvd.

College Square

New Members Needed

Members are needed for three of Student Affairs Council's standing committees according to ASI Vice-president Frank Mello.

Election Committee, Donation-Drives Committee and Codes and Constitutions Committee need new members for the present year.

Interested persons have about one week to contact Mello at the ASI office for a position on one of the committees.

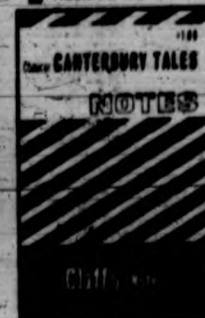
★ ★ ★
It Pays To Advertise

COOL CHAUCER
WITH THIS
neat idea!



Don't be confused by Chaucer - get Cliff's Notes. In language that's easy to understand, Cliff's Notes expertly explain and summarize The Canterbury Tales. Cliff's Notes will improve your understanding - and your grades. But don't stop with Chaucer. There are more than 125 Cliff's Notes covering all the frequently-assigned plays and novels. Look for them in the bold black and yellow-striped covers.

\$1 at your bookseller
or write for
free title list



COOKBOOK SALE

Limited Time Only

40 different titles available

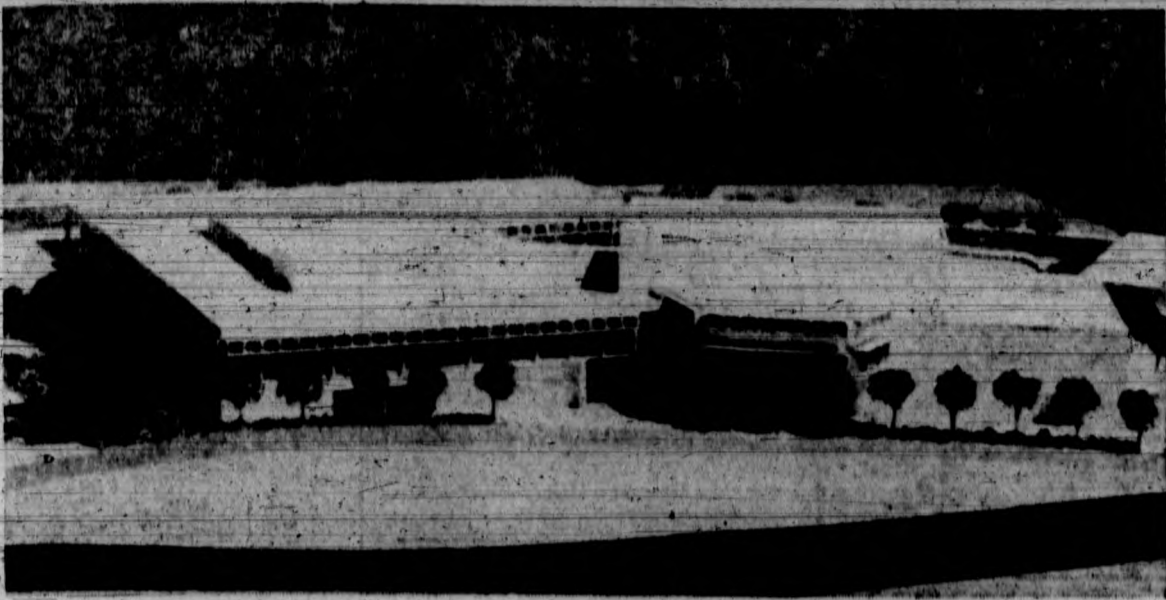
SPECIALTY • GENERAL
GOURMET COOKBOOKS

A great idea for —

- Students living off campus
- Home Economics majors
- An inexpensive gift for birthday or Christmas



El Corral
BOOKSTORE



PROPOSED COLLEGE UNION . . Due to federal The result is that students are now paying for the government "red tape" the approval of a \$8 million building without benefiting from it. loan to finance the building has been slowed down.

Federal 'red tape' slows College Union construction

by Joe Hannigan

"We decided to put our heads down and try to explain that there was no malicious intent," said Douglas Gerard, building coordinator.

Delay in construction of the College Union building has forced Gerard into a position he hopes will be eliminated.

Gerard referred to the delay as "a bitter experience." Federal government "red tape" slowed down approval of the \$8 million loan needed to finance the College Union Building. The result is that students are now paying for the building without benefiting from it.

Due to the proposition's wording, which was passed by the student body in May, 1964, payment was to begin in Sept., 1966. At this time, it was assumed the loan would be approved and construction would proceed immediately.

The student body agreed to pay up to \$20 a year per student at the maximum. At present, the fee is set at \$16. Gerard stressed the fact that the fee is to be reduced if possible, thereby removing the burden of repayment from the students as soon as the College Union Building is functioning.

Methods of bypassing the proposition's wording, as passed, were explored but to no avail. Gerard consulted an attorney, who advised the proposition's rewording would nullify it and eliminate the possibility of the government loan being realized.

Cal Poly was the last college to receive a loan for a College Union Building before the government set a ceiling of \$500,000 for loans to state colleges for construction other than residence halls.

If the proposition was nullified, the loan would be lost, as would the College Union.

It was decided to investigate the chances of obtaining a loan from commercial sources. Interest from a commercial loan was 4.5

per cent as compared to 3 per cent from the government.

"The difference in interest over the 40 year period would amount to 1.4 million dollars. The burden of this additional amount would be placed on the student, and we felt this was unfeasible," Gerard said.

"The government approved the loan Aug. 4 and we sent in the contract to the architect on Aug. 10 of this year. We expect working drawings to be completed in late spring and the building to be under construction next summer."

"The federal money will not be made available until the project is 90 per cent completed. Therefore, the College Board of Trustees will apply for a loan to cover cost of construction until the amount of work required has been done."

"The trustees will ask for the loan from one of the finance companies operating in the state to get a cut in the interest rates that would be placed on a loan granted to the college," said Gerard.

Gerard noted that cost of operations will start roughly at \$250,000 a year and continue upward to nearly \$270,000 a year by 1972.

"A common misconception

among the students is that they will be paying the \$8 fee per quarter as a sole means of support for operating the College Union.

"The bookstore will pay for nearly one-third of the yearly costs! Rent received from merchants operating in the building will cover nearly 21 per cent of one year's costs. The students will be paying for less than half of all operating fees," Gerard said.

As a sidelight, Gerard noted that federal red tape was holding up construction of the new Computer Science Building to be located between Engineering West and Engineering East.

"Drawings for the building are 90 per cent completed at this time and we hope to be under construction soon," he said.

"The Biological Science Building is two years behind schedule waiting for government approval of a federal grant, not a loan," he continued.

"My ulcers are getting worse," Gerard quipped.

In describing the College Union, Gerard said, "We tried to incorporate into the building what the students wanted. We used student

(Continued on page 6)

El Mustang

CALIFORNIA STATE POLYTECHNIC COLLEGE

Published twice a week during the school year except holidays and exam periods by the Associated Students, Inc., California State Polytechnic College, San Luis Obispo, California. Printed by students majoring in Printing Engineering and Management. Opinions expressed in this paper in signed editorials and articles are the views of the writers and do not necessarily represent the opinions of the staff, views of the Associated Students, Inc., nor official opinions. Subscription price is \$5 per year in advance. Office Room 228, Graphic Arts Building, California State Polytechnic College.

SALLY BOSS Editor-in-Chief
ROBERT KOCZOR Managing Editor
BRENDA BURRELL Tuesday Editor
JUDY BEHRENDT Friday Editor
KARIN FROYLAND Sports Editor
GARY WILSHIRE Production Manager
JOHN HEALEY Adviser



for cones, shakes, splits or a delicious
 charbroiled hamburger or hot dog

12 No. Broad St.

(Just off Foothill)

San Luis Obispo

10 a.m. to 10:30 p.m.

543-7946

NEW!

Longer
 Mileage

Greater
 Safety



WESTSIDE RETREADS

The Westside PREMIUM retreads are covered by a guarantee that if taken out of service because of road hazard or workmanship other than run flat will be adjusted by the dealer on the following basis:

UP TO 1/4 WORN NO CHARGE
 1/4 WORN OR BETTER \$5.00 EACH

Westside TIRE SERVICE



BUY THE BEST — FORGET THE REST
 PHONE 543-4780 — 1232 MONTEREY, SLO

Welcome Students



CAL POLY SPECIALS

28" Wood Table Legs PER SET OF 4 \$3.68

28" Metal Table Legs PER SET OF 4 \$3.68

MANY OTHER SIZES AVAILABLE

2 x 4 1/2 NOVOPLY BENCH AND TABLE TOPS EACH \$1.29

12"x12" Ornamental Cement Blks. EACH 49c

MAKE A BOOKCASE
 EASY TO TAKE WITH YOU

OPEN WEEKDAYS 8:00 to 5:30

SATURDAYS 8 'til 5

SUNDAYS 9 'til 4

KELLY-MOORE

HOME IMPROVEMENT CENTER

424 SANTA BARBARA ST. PHONE 543-2191
 SAN LUIS OBISPO

1967
 VOLKSWAGEN
 Deluxe Sedan



\$1822.00
 Plus Tax and License

Equipped with Heater, Windshield Wiper, 1300cc 53 hp Engine, 2-Speed Electric Wiper, Leatherette Upholstery, Split Belts and Retractors, Back Up Lights, Outside Mirror.

FRED
 LUCKSINGER
 MOTORS, INC.
 695 PALM 543-2800

Tryouts completed for music groups

Tryouts and plans for this year were completed this week by the Collegians and the Men's and Women's Glee Clubs.

The Women's Glee club numbers 80, with 45 returning members. The group's president is Rachel Boswell and Meg Turner is manager.

The Men's Glee Club, which chooses on a more competitive scale, has 76 members. Senior Woody Barley is president and Mr. Dennis Morten manages the group.

The Collegians, a 15 piece dance band, had only four positions open this year. They play

for big dances on campus, such as Homecoming and the Christmas Formal.

According to Dale Sally, the group's manager, "This should be one of the best years for the Collegians, because we only lost four men from last year."

In March, 42 members of the Men's Glee Club and the Collegians will visit San Diego for a week long music tour. They will perform in high schools and junior colleges in that area.

One of the highlights of the year is the Spring Home Concert in April, which includes all three groups.

Queen's judging tomorrow night

The annual Homecoming Queen's Pageant will be held this Saturday evening at 8 p.m. in the Little Theater.

The admission will be 50 cents and everyone is invited.

Fifteen to twenty candidates are expected to be presented and judged in three phases.

The first phase of the judging will be the reception for the candidates. This will take place in the Staff Dining Hall at 6:45 p.m. At this time the contestants will be introduced to the judges. Next, the contestants will be introduced individually to the public during the ceremony in the

Little Theater. During the final phase of judging, the contestants will each be asked a question and given one minute to answer.

Homecoming this year will be October 22 and will follow the theme "Would You Believe?"

Support Local Merchants Displaying Booster Membership Signs

Selective Service

Applications for the Nov. 18 and 19 administration of the College Qualification Test are now available at Selective Service System local boards throughout the country.

Eligible students, who intend to take the test, should apply at once to the San Luis Obispo local board or to their own local draft boards for an application card and a bulletin of information for the test.

Following instructions in the Bulletin, the student should fill out his application and mail it immediately in the envelope provided to Selective Service Examining Section, Educational Testing Service, P.O. Box 988, Princeton, New Jersey 08540. Applications for the test must be postmarked no later than midnight, Oct. 21.

Whatever your area of study, there may be a place for you with IBM.



From the snowy ski slopes of Burlington, Vermont, to the sun-swept shores of the West Coast—and just about everywhere in between—there's an IBM plant or lab. Seventeen plants and twenty-one labs at last count, and more are being planned every year. So what?

So... whatever your area of study, whatever your regional preferences, chances are there's

a place for you with IBM.

Career opportunities at IBM include: Research and Development, Engineering, Manufacturing, Finance and Administration, and Programming.

Once you've decided on your career area, then you'll have to make a location decision. A nice decision to have to make.

Whatever your immediate commitments, whatever your area of study, sign up now for an on-campus interview with IBM, October 19

If, for some reason, you aren't able to arrange an interview, drop us a line. Write to: Manager of College Recruiting, IBM Corporation, 3424 Wilshire Boulevard, Los Angeles, California. IBM is an Equal Opportunity Employer.

Proposition two

(continued from page 1)
reach 225,000 by 1970 and is expected to hit 300,000 by 1981. During the past five years, the State College enrollment has increased by 46 per cent.

California is the nation's fast-growing state, adding about 3 per cent to its population each year. However, the state's college age population is increasing at more than double this rate. Between 1966 and 1970, just four years, the State Colleges will be called upon to accommodate an additional 55,000 students, Dumke said.

Some of the major proposed campus-by-campus allocations of bond issue funds are:

There are more than 150 separate projects scheduled for all of the present State College campuses.

Federal 'red tape'

(Continued from page 5)

surveys and interviews to discover what they held to be important.

"As for the College Union itself, it will contain lounges and student activity offices on the second floor, and we feel it will be referred to as 'The Living Room of the Campus.'"

"On the lower floor, there will be a bowling alley, billiard tables, game areas, commercial centers for a barber shop, vending machines, laundry pickup station, and a banking service.

"Some controversy is taking place with regard to the banking facilities, but plans for it are still tentative, Gerard said.

"Previous plans included space beside the bookstore for the post office. The spot designated for the post office will now be included in the area set aside for the bookstore, Gerard said.

"Last year, President McPhee set up a College Union Advisory Board that will help to resolve pre-management problems. It will undoubtedly be reactivated this year.

"The makeup of this committee will be largely student representatives. They will help set up a structure of operations and help decide the final details on interior design after consultation with the architect," Gerard concluded.

Europe for \$100

Switzerland A do-it-yourself summer in Europe is now available. The new plan makes a trip to Europe, including transportation, possible for less than \$100. A complete do-it-yourself prospectus including instructions, money saving tips and a large selection of job opportunities along with discount tours and application forms may be obtained by writing to: Dept. X, International Travel Est., 68 Herrngasse, Zurich, Liechtenstein (Switzerland) enclosing \$1 with your inquiry to cover the cost of the material, overseas handling and air mail postage.

Many faces of coach Harden



HAVE YOU EVER wondered what goes through the mind of a head football coach with 161 remaining on the one yard line?

For head football coach Sheldon Harden the time arose last weekend against San Diego State, but his plan for victory failed.

Harden, down through his coaching career of 18 years, has had his ups and downs to blur his record. But, not once has he given up.

This season, a big improvement has been achieved

by the Mustangs, shown in their upset win over Linfield College, and the near win over the Aztecs.

What's been the answer to the vast success? Harden's key work is team DESIRE.

Some of the biggest thrills in the life of Harden have been in the last two years with wins over San Francisco State, 21-20, last year and the upset win over Linfield, 22-7.

Football hasn't always played the major role in his coaching career. In 1958, 11 years after coming to

Poly, Harden as head wrestling coach won the Pacific Coach Intercollegiate Wrestling Association crown to become the only California team to win the meet which was dominated by Oregon State.

One point brought out by Harden early in the season was that the team wants to win all the way. The attitudes and desires of each player are go-go-go for victory. What is to come the rest of the season might be a surprise to a few people.

Frosh to test Sequoia; Colts eye first triumph

Cal Poly's Colts will be going against the odds for the second week in a row as they battle College of the Sequoia in Visalia Saturday night at 8 p.m.

College of the Sequoia is undefeated in three games this season and they seem to get stronger every week. In their three games they have tallied 104 points to the opponents' 27.

The giants will be led by the hard running of halfback John Hamilton. From his statistic record it is easy to see why he is a candidate for All-American honors. Last year the speedy halfback gained 541 yards rushing and totaled over 85 yards in the receiving department.

In their opening game of the season Cal Poly was handed a 35-0 shellacking by the Cuesta Cougars.

The Colts had trouble containing Cougar halfback John Hammond who rambled for three touchdowns.

Cuesta wasted little time getting on the scoreboard after taking the opening kickoff. In 10 plays the visitors were knocking on the Colts' door scoring on a six yard trap play off right tackle by Hammond. Dan Smith's PAT was good.

Poly managed to penetrate down to the Cougar six yard line but could go no further. In three

plays from scrimmage, the Colts picked up a total of one-half yard.

Quarterback Ed Channell for Cuesta connected with Hammond on a 28-yard aerial in the second quarter to give the Cougars a 14-0 halftime margin.

With 7:55 gone in the third quarter Channell handed off to Hammond for his third touchdown jaunt. Hammond waded and evaded two or three Colt tacklers and raced 89 yards untouched.

Leading 21-0 and one quarter to play, the Cougars got tough when needed and botched up any Colt offense threat.

Two pass interceptions accounted for the final two TD's by Cuesta. Hammond picked off an aerial thrown by Colt quarterback Pete Vandenberg and raced down the sideline for a 32-yard return. In seven plays the Cougars scored.

The second pass swipe came with 1:22 remaining in the contest by fullback Ralph Ravey. Ravey returned the ball down to the Colt 12. As time ran down to :04 Cuesta used up their final time out.

Laguna Seca topic of sports car fans

Once again October brings "racing fever" to the Cal Poly campus.

With the Monterey Grand Prix, Fort Ord loses its typical Army camp appearance and turns into a modern racetrack with high-speed banked turns and straightaways.

On Sunday morning, Oct. 16, the tension will be felt as the pit crews make final adjustments to the Ford, Porsche, and Ferrari as they make their bid to win.

The drivers, such as Parnelli Jones, Jim Clark, and A.J. Foyt can be seen nervously pacing the pit areas as time draws close.

With speeds now exceeding 200 miles per hour down the straights, there's plenty of action at Laguna Seca. The track has been resurfaced this year to meet the demands placed on it by today's high speed machinery.

Quicker access to the track has been assured this year with the rebuilding of one of the main entry roads.

With \$30,000 in prize money, drivers will be pushing their cars and themselves to the limits. This makes for plenty of action. If you go where the action is, I'll see you at Laguna Seca.

GEM WISE

By RUDY SILVA, C.G.
American Gem Society

JEWELRY LORE

Did you know that Ruby and Sapphire are both the same gem mineral called corundum? Only when the sapphire attains a certain shade of red can it be called a ruby; otherwise it is just sapphire. Other "sister" gems are emerald and aquamarine, both members of the Beryl family. Again, color is the only difference. A light greenish aquamarine.

In buying fine jewelry, one of the most important things to know is "your" knowledge and business ethics should be above reproach. Through GEM WISE, I hope you will come to know me and our firm a little better. See you soon.

BRASIL'S JEWELERS
Hotel Anderson Bldg.

ELECTRONIC SUPPLIES

TV - RADIO - STEREO - HI-FI - KITS - PARTS

Wholesale Prices Open to the Public

FAMOUS BRAND NAMES

- | | | | |
|-------------|---------------|-----------------|-----------|
| • ASTATIC | • BELDEN | • MILLER | • WINGARD |
| • FINCO | • STANCOR | • SYLVANIA | • BICO |
| • CENTRALAB | • RAY-O-VAC | • KRAUTEM | • JERROLD |
| • MALLORY | • SWITCHCRAFT | • SHURE | • ERIC |
| • SOGAN | • GARRARD | • ELECTRO-VOCAL | • KENLITE |

BANKAMERICA CARD

MID STATE Electronic Supply Inc.

543-2770

1441 MONTEREY

SAN LUIS OBISPO



- OVER YOUR INSTRUMENTS
- OVER AUDIENCE NOISE

Your microphone is your link with your audience. Choose it with care. Shure Unidyne microphones project your voice over your instruments, and over audience noise... YOU WILL BE HEARD. They are used by many of the world's most famous Rock 'n Roll and Country 'n Western groups. Shure Unidyne microphones help put your act across. Write: Shure Brothers, Inc., 222 Hartrey Ave., Evanston, Ill. 60204.

SHURE
UNIDYNE
PROFESSIONAL ENTERTAINER
MICROPHONES

YOU DON'T HAVE TO HAVE A BUTTON-DOWN MIND TO WEAR BUTTON-DOWN SHIRTS



It's time to un-button your thinking about traditional button-down shirts. Holbrook stitches up the finest plaids ever to jig across a shirt. All crisp cotton, all the finest traditional tailoring, all the smartest color combinations for Fall. \$5.00 by HOLBROOK.

Larson's
Village Squire
SAN LUIS OBISPO
College & Career Clothes



Mustang Sports

Wrestling workouts currently underway



Ken Dalton
Richard Terrell

Players of the week . . . Rich Turrell, 6-1, 190 pound half-back carried the ball 17 times for 33 yards against the Aztecs. With one second left on the clock, he punched in from a yard out to make the final score 14-13. Ken Dalton, 5-10, 170 pounds also received honors for his effect against the Aztecs.



As they say, practice makes perfect. And that is exactly what wrestling coach Vaughn Hitchcock will be striving for as he greeted 24 returning grapplers and 32 junior college transfers yesterday to open the 1966-67 season.

Even though the first match is not until Nov. 12, Hitchcock will send his musclemen through six weeks of strenuous training in preparation for their first encounter with El Camino Junior College.

The Mustangs, defending NCAA Small College Champions, will be lead by national champion Dennis Downing at 152 lbs. Downing during the regular season wrestled to a 12-4-0 record.

Also returning from the championship team will be John Garcia (123 lbs., 11-2-0), Tom Miles (137 lbs., 11-5-0), John Miller (180 lbs., 10-3-1), Terry Wigglesworth (167 lbs., 9-4-1), Dean Hilger (177 lbs., 10-5-0), Tom Kline (191 lbs., 2-1-0), and Joe Faria (Hwt., 3-4-1).

The Mustang's first match

against a four year school will come against UCSB on Nov. 29 in Santa Barbara.

Once again, Cal Poly will tackle Oregon State University, University of Oregon, and Portland State. Last year the Mustangs fell to all three by scores of 11-19, 8-20, and 10-22.

The Mustangs will be gunning for their fifth consecutive CCAA conference title this season. The title last year wasn't decided until Cal Poly smothered Fresno State 23-5, in the final conference match of the season.

Other CCAA members the Mustangs will face are LA State, San Fernando Valley State, San Diego State, and Long Beach State.

Water polo team ready for SFVS

Cal Poly's water polo team jumps right into the thick of CCAA action today when the Mustangs battle San Fernando Valley State in Crandall pool beginning at 4 p.m.

After wiping the opening match of the year in a double overtime bout with El Camino Junior College, 8-7, the Mustangs have had some trouble finding the winning combination.

Over the weekend, Cal Poly was dealt three losses in the UCSB tournament by USC, San Jose State, and UCSB.

"We were mentally and physically beaten in the tournament but did show a lot of promise," remarked Coach Richard Anderson.

Leading the Mustangs into conference action will be seniors Allen Everts, Tom Ruggles, Jim Black, and Pete Scaroni.

Everts, playing as a three year letterman, has been a real demon on defense as well as a help on the offensive attack. Ruggles was nominated to the first team at the State tournament last year. He was also given honorable mention honors to the All-American team across the nation.

Acting as captain for the Mustangs this year will be Black, a two year letterman.

"I'm really pushing for the conference meets this season. We have a good team and win with the extra help of the sophomores and freshmen we could surprise some people in the CCAA," added Anderson.

Tennis team sets tryouts

Even though it might seem a bit out of season, tennis practice will begin Monday at 3 p.m.

Coach Ed Jorgensen will be conducting the practice sessions daily behind the gym on the tennis courts.

"I am beginning practice now so the members of the team will be able to get into top condition sooner," said Jorgensen.

Returning from last year's squad will be senior Mike McDow, junior Jim Williams, and sophomores Richard McKirdy and Frank Sandall.

Those qualified with previous high school or college experience and especially urged to contact Coach Jorgensen on Monday, or to attend the first practice session Monday.

The CCAA is usually dominated by San Diego State, and Long Beach State. The conference as a whole plays among the finest tennis teams on the state college level.



KIMBALL TIRE CO. INC.

Featuring ORBITREAD, the electronic retreading process that is "programmed" to produce a precision balanced tire using VOIT rubber.

Special rates to Cal Poly students

252 HIGUERA STREET

LI 3-6787

Distributor for Seiberling and Kelly tires and Autolight batteries

DEAR REB:

Art student keeps getting the brush-off.

DEAR REB:

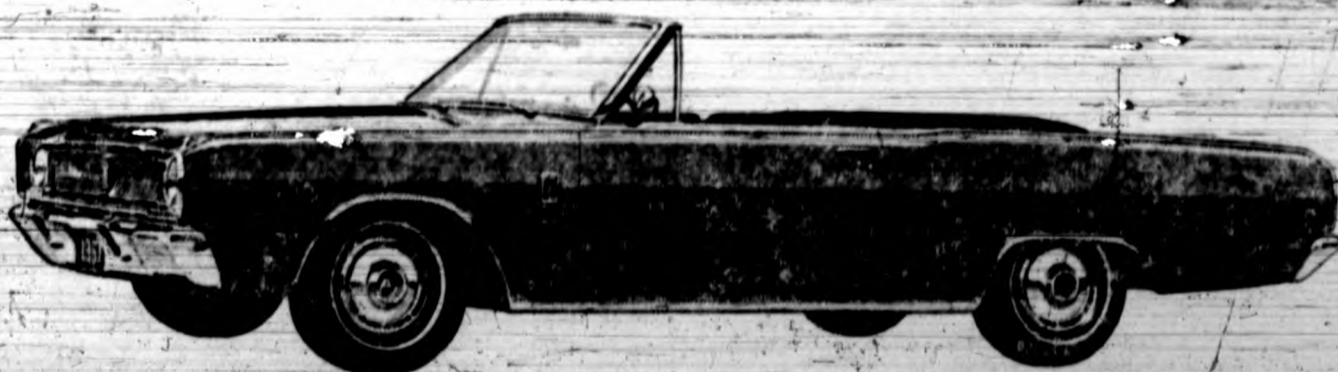
I'm a regular Renoir on the canvas, but on campus I just don't seem to make the scene. There was one campus cutie that used to admire my paintings, but now she's too busy admiring some guy's new Dodge Dart. She says riding in this guy's Dart is like art, every time they go out, they draw a crowd. What can I do? I just have to see this girl again. It's not that I'm in love with her, I haven't finished her portrait yet.

COLOR ME BLUE

DEAR COLOR ME BLUE:

Make your next sitting at your Dodge Dealer's. After you find out how easy it is to own a Dart, you'll be out painting the town. And don't worry about finishing the portrait. With Dart, you'll find you have many models to choose from. Get the picture?

Sincerely,
Reb



Here's the picture that's worth a thousand ah's. '67 Dodge Dart GT. Dart gives you more show and go than ever before, and it still has that nice low price. Plus a long list of standard equipment. Like padded instrument panel, padded sun visors, outside rearview mirror, carpeting and so much more.

DODGE DIVISION CHRYSLER MOTORS CORPORATION

DODGE REBELLION OPERATION '67