

El Mustang

CALIFORNIA STATE POLYTECHNIC COLLEGE ★

VOL. XXVIII, NO. 32

SAN LUIS OBISPO, CALIFORNIA

TUESDAY, APRIL 12, 1966

Dean Hayes released as engineering head

Harold P. Hayes, Dean of Engineering at Cal Poly since 1962, has been released "from operational responsibilities . . . and from local campus committee assignments."

This was the word from campus vice president Dale Andrews early last week. The reason for the reassignment is to allow Hayes to conduct a complete over-all review of the college's engineering program. The review will include an evaluation of the ECPD reports, the development of proposals for an over-all study and evaluation of the engineering program, and "other assignments necessary to planning for the future and improvement of the Engineering Division."

In announcing the change of responsibilities for Dean Hayes, Andrews said, "With the major Engineering Division dean-level policy recommendations determined for the remainder of the present academic year and summer quarter, it has been found possible to release Dean Hayes from operational responsibilities for the Engineering Division and from local campus committee assignments in order to carry out



Dean H. Hayes

the responsibilities associated with this new assignment."

BULLETIN

Word received late yesterday is that John Hirt of the Business Administration department will be Dean Hayes temporary replacement.

In talking with Andrews El

Mustang was told that the recent failure of the division to receive accreditation from the ECPD was a factor in having the study conducted at this time. Also a factor was the fact that the last time such a review was made was in 1962.

Asked how long the dean would be working on this new assignment, Andrews said it was hard to estimate but he noted that the Agriculture Division is having a thorough review done by the Stanford Research Institute. While Hayes will not conduct such a survey, it is possible his work will help to determine whether a Stanford-like survey should be conducted.

Asked about his new job, Hayes said he is looking forward to conducting the study. It is an important job and "I welcome the chance to do it." Hayes expressed his regret at having to lose contact with students but hoped that after the study is completed that he can return to continued contact with students.

The dean noted that the accreditation rebuff did give some stimulus to getting the reevaluation started at this time. But, also, he felt that the time was right for such a study anyway. The ECPD report has several important areas which will have a direct effect on Cal Poly. The most controversial proposal is that no degree in engineering be given below the Masters of Science level.

(Continued on page 4)

SAC keeps assistant manager temporarily

The Student Affairs Council unanimously rejected the proposal that the position of assistant graduate manager be made a permanent job. This action occurred at last Tuesday's meeting.

Instead SAC approved the resolution continuing the position through the academic year 1966-1967. At that time, after more study, another decision will be made to continue the position or to make the position permanent.

Bob Spink, graduate manager, said he favored the position being made permanent. He noted that with the increase in campus activities, with the four quarter system in effect, and with the work which will be provided by the proposed College-Union Building, two full-time assistant managers may even be needed.

(On April 1, Doug Gibson, assistant graduate manager for the previous five months, resigned and departed for Fort Knox Ky., where he will begin his military training for OCH. Since that time Gibson's vacancy is being filled by Jim Moore, a recent Journalism graduate, who also is awaiting orders to proceed with his training as a commissioned officer.)

The salary for the assistant graduate manager begins at \$644 per month, which is similar to that of the State's Junior Instructor position, with five pay scales. Each pay raise is 5 percent, the first taking effect after six months.

Spink noted that the qualifications for the position are that the applicant possess a college degree with some kind of concentra-

tion in Journalism; that he work full time during 12 months of the year instead of the normal ten months; and that he put in the average of 50-60 hours a week required on the job.

Spink further noted that when Gibson has completed his active military commitment, he is entitled to have his former job as assistant graduate manager if he so desires. Any applicant for the job would be warned beforehand of Gibson's prerogative.

Other matters considered at the meeting included the adoption of the resolution to include five employees of the student body in the state retirement program. The five employees are Bob Spink, Phyllis Stewart, Ethel Spry, Mio Ukita, and the assistant graduate manager.

The retirement program authorized by SAC will cost an estimated \$2,200 per year. This entails a 4.234 percent monthly retirement contribution matching that of each of the four employees.

Friction between members of the Dorm Council and the College Union Dance Committee also developed at the meeting. The controversy pertains to the allegation by the Dorm Council that residence hall dances held on the same nights as income producing dances are jeopardizing their income.

SAC approved a motion that a committee composed of members of the two interest groups be formed. Members of the committee will be appointed by ASU president, George Soares.

Home Concert preview set

A preview of this year's Spring Home Concert will be given this Thursday when three musical groups are featured at College Hour.

Headlining the program will be the Men's Glee Club which will sing such numbers as "Charlottesville," "The Girl That I Marry," "Blessing of St. Francis," and "Ugly Woman."

Along with the glee club will be the Collegians dance band and the Cal Poly Sextet. The band will offer their renditions of "Tequila" and "Preacherman's A-Comin'."

The Home Concert, which will include most of the musical groups in the Music Department, will be presented April 22 at 8 p.m. in the Men's Gym.

Architecture is first again

The Architecture Department is again the largest department in the school, according to figures released last week by the registrar's office.

Out of the 6,773 students enrolled for the Spring quarter, Architecture has 706. Rounding out the top five in enrollment also are Social Science with 614 students; Business Administration, 441; Home Economics, 417; and



GOP POLITICO . . . Actor-turned-politician Ronald Reagan will be on campus Sat., April 16; to present his views to the students of this college. Sponsored by the local Republican club, Reagan will entertain questions from the floor following his talk.

Actor-candidate speaks to students Saturday

Students conduct chromosome study

Twenty-three students along with Dr. William Hamfield and Dr. Durrell White from the Bio-Sol. Department have been conducting human chromosome study at Atascadero State Hospital.

The work is being done in connection with last quarter's genetics class. The same group of students will complete their work this quarter. Hospital facilities were used to allow students a chance to study sex characteristics of their own cells and chromosomes.

Their work has included: examining buccal smears, which are prepared by scraping cells from the inside of the mouth, putting them on slides and staining them; for sex chromatin bodies; examining white blood cells of peripheral blood for drumstick appendages, which denote certain sex characteristics; and drawing venous blood from each student so he could study the chromosomes found in the plasma of his

Ronald Reagan, GOP gubernatorial candidate, will be the featured speaker at an open meeting of the local Calif. College Republicans club this Saturday.

The actor-politician will discuss some of the major issues in the campaign and students will have a chance to ask him any questions they may have. Reagan, on a speaking tour through the Central Coast area, will give his talk at 2 p.m. in the Staff Dining Hall.

Earlier in the day he will attend a luncheon at a local hotel. Richard Trencher, executive director of the CP-CIS, expressed the hope that students will attend the meeting to clear up any questions they may have regarding the Reagan candidacy.

own blood after it has been cultured, harvested and stained. Work to be completed this quarter will include more chromosome study and photomicrography.

Henry J. Vanderlin, senior clinical laboratory technologist of the hospital, commented that similar work by future groups of students is very likely because of the interest shown by the present group.

Secondary Education, 416.

This term's enrollment is up from last quarter's 6,731 as well as from last Spring's 6,521.

In the divisional breakdown the Applied Arts led the field with 2,150 students. Engineering followed with 1,974. Third is Agriculture with 1,522, while the Applied Sciences is the smallest with 1,127 students.

The smallest department is Horseshoeing, with 18 students enrolled. Above it is Biochemistry, 18 students, and Elementary Education 27.

Following the trend of the past several quarters, the male-female ratio is being reduced. There are now 5,022 men and 1,751 women enrolled this quarter. Women now

(Continued on page 3)

Cost and quality related; food waste causes problem

As a result of a recent survey of food waste in the dining hall, the Student Dining Hall Committee issued three recommendations in an effort to cut waste and food costs.

According to John Lee, assist-

ant dining hall manager, "We are just trying to make the students waste-conscious. In order to comply with student requests for thicker steaks, seconds on the entree, etc., waste must be reduced."

The SDH Committee estimates that the average untouched food waste is \$90 per day, or an average of \$21,000 a year. Cost for replacement for dishes and silverware stolen from the cafeteria was \$18,000. That adds up to \$39,000 worth of thicker steaks if students can eliminate waste.

Lee indicated that the greatest waste is due to thoughtlessness on the part of the students. "You know the kind, he takes three rolls and then goes on down the line for two sandwiches. We see the rolls go by on the conveyor belt afterwards."

Lee reminds students that the Foundation is a self-supporting organization.

At present, the \$155 per student per quarter is covering its total operation, but it cannot continue if waste is not avoided.

A limited number of spaces
is available

CHARTER JET FLIGHTS FROM EUROPE

Paris-San Francisco

July 29, 1966 or

August 3, 1966

For Faculty, Staff, Students of
The California State Colleges

for information:

Office of International Programs

California State Colleges

1600 Holloway Avenue

San Francisco, California 94132

Fare: \$225 one way

In stock

ELECTRONIC SUPPLIES

TV - RADIO - STEREO - HI-FI - KITS - PARTS

Wholesale Prices
Open to the Public

FAMOUS BRAND NAMES

• ASTATIC
• FINCO
• GENERAL
• MALLORY
• BOGAN

• BRUNN
• STANCO
• RAY-O-VAC
• SWITCHCRAFT
• GARRARD

• MILLER
• SYLVANIA
• KRAUTER
• SHURE
• ELECTRO-VOCAL

• WINGARD
• BICO
• JERROLD
• BRIC
• XCELITE

BANKAMERICA CARD

MID STATE
Electronic Supply Inc.

543-2770

1441 MONTEREY

SAN LUIS OBISPO

Back to class?
Go with class!



GO HONDA!

Just the ticket for campus traffic, crowded parking lots or just plain fun. And, instead of walking her to class, you can ride her to class! Hondas are more fun than a barrel of coeds.

See all the Honda models (there's one just right for you) at

SAN LUIS CYCLERY

1239 MONTEREY STREET

"You Meet the Nicest People on a Honda"



DANCERS FEATURED . . . The Hadarim an Israeli folk dancing group will be featured at the celebration of the 18th anniversary of Israeli independence. See page 5 for further details.

Stanford-NASA program invites Cal Poly instructor

Alfred Andsoll, Aero faculty member, has been invited to participate in the Stanford-NASA Summer Faculty Fellowship in Systems Engineering. He is one of fifteen selected to receive special training in Space System Engineering.

Under the joint direction of NASA and Stanford University, the fifteen individuals will work on "an advanced solar probe for measuring the environment of the region between the earth and 0.1 AU of the sun. (One AU, Astronomical Unit, 19,150,000,000 miles) Called "Pioneer," the project is scheduled for launching in late 1969. The project will last from June 13 to Aug. 19 and will be under the direction of four Stanford professors.

System engineering is a term given to the design of a total system. It is component design with an awareness of the mutual effect of components. As such, it

requires the mixture of brainwork from Aero, Electrical, Electronic, Mechanical and all the fields.

NASA's interest in sponsoring such a program is in improving the engineering education in the United States. Andsoll's personal interest in the project is that "it will improve me technically as an engineer and so allow me to teach better." He will also examine the system approach to determine if such a course would be of value to the engineering division here.

Skiers to hold election; show movie of trip

The Cal Poly Ski Club will hold their election of officers this Wednesday at 7:00 p.m. in Ag. Bldg. 123. Movies of the Squaw Valley trip will be shown. All members are urged to attend.

Board selects Wiley advisor to committee

Richard C. Wiley, head of the Welding and Metallurgical Engineering Department, was appointed recently to the advisory committee for the State Board of Registration for Engineers. Wiley was appointed to the committee by the Board of Registration for Professional and Civil Engineers.

Since 1948, there hasn't been a registration for Metallurgical Engineers, but recent state legislation reopened the field to registration. "Registration is an indication of competence and high standing in a field, and can be used as a means to promote higher salary and status," said Wiley.

The committee will advise the Board of Registration who can be registered by examination and who may register without examination by virtue of experience, prominence and background in metallurgical engineering.

'Carnival' tryouts

The last chance to try out for the College Union Drama Committee's production of "Thurber Carnival" will be tonight at 7:00 in the Music, Speech, and Drama Building, Room 201.

"Thurber Carnival," formerly seen on Broadway, is College Union Drama Committee's second Experimental Theatre attempt. Similar to "An Evening With Jules Piffer," "Thurber Carnival" consists of short skits portraying James Thurber's material.

All of the character parts are small and were designed for those students who do not have time for a full part. Students who would like a larger role can play several parts.

**Home
Concert
April 22**

SAVE MONEY on car repairs

at

AUTOMOTIVE CLINIC

10 per cent Off With Cal Poly Student Body Card
Use Your BankAmerica Card

FREE PICKUP AND DELIVERY

543-8077

1234 Broad Street

Traditional Shop for Young Men

Wickenden's

Authentic Natural Shoulder
and Continental Fashions

MONTEREY & GORRO, SAN LUIS OBISPO

Growing Together



**APRIL IS
TEACHING CAREER MONTH**

Army commissions six Poly alumni

Six former students, who completed their studies last month, received commissions as second lieutenants in the United States Army Reserves in ceremonies held at the Military Sciences department.

All graduates of Cal Poly's Reserve Officers Training Corps program, they are Howard C. Brown, III, San Luis Obispo; Douglas S. Clark, Los Angeles; James W. McNeill, Portola; James W. Moore, Jr., San Diego; John T. Ressler, Paso Robles; and Vernon Van Voorst, Thermal.

Brown was designated a military graduate in addition to receiving his commission in the Transportation Corps. Lt. Brown has not yet received his orders for active duty, and he and his wife, Susan, will remain here pending assignment.

Clark, a Dairy manufacturing student, has received orders assigning him to Fort Lee, Va., to attend the U.S. Army Quartermaster Officer's course. Following his schooling at Ft. Lee, he will be assigned to U.S. Forces in Germany.

A Biological Sciences major, McNeill was commissioned in the Artillery Branch but has not yet received assignment orders. McNeill is interested in the Army Aviation program and hopes to attend the Aviation School upon completion of the Artillery Officer's basic course.

Moore, a Technical Journalism major who was commissioned in the Army Intelligence Branch, will be no stranger to the military. His father is a retired Army officer. Jim graduated from Frankfurt American High School in Frankfurt, Germany, and hopes to be assigned to Germany upon completion of the intelligence officer's basic course. While awaiting his orders, he will be employed on the professional staff of Cal Poly's Associated Students, Incorporated.

Also a distinguished military graduate, Ressler was commissioned in the Artillery and been assigned to the US Army Artillery officer basic course.

Van Voorst received a commis-

sion in the Army's Corps of Engineers. Van Voorst, an Agricultural Engineering student, has not yet received his assignment papers but hopes to go to Alaska upon completion of the Engineer Officer's basic course.

A limited number of spaces
is available

CHARTER JET FLIGHTS TO EUROPE

San Francisco - Paris

August 27, 1966 or
September 3, 1966

For Faculty, Staff, Students of
The California State Colleges

for information:

Office of International Programs

California State Colleges

1600 Holloway Avenue

San Francisco, California 94132

Fare: \$225 one way

Senior Marilyn Seidel selected 'Miss Mathematics' Queen

Marilyn Seidel, a senior mathematics major has been chosen "Miss Mathematics" for 1966 by her fellow students in the Math Department.

Daughter of Mr. and Mrs. Wil-

liam S. Seidel of Glendale, Marilyn will serve as hostess for mathematical activities on campus and especially for the 1966 Mathematics Contest, scheduled for April 29 as a feature of the 34th annual Poly Royal.

Marilyn, an attractive brunette who graduated from Glendale High School, attended Glendale College before attending Cal Poly.

A sailing enthusiast at heart, she has been active in the Corinthians Sailing Club and is a member of the Math Club.

Miss Mathematics annually acts as hostess to more than 400 students from some 75 high schools throughout the state, who enter the Poly Royal Math contest.

Architecture first

(continued from page 1)
represent 34.9 per cent of the student body as opposed to 32.3 last Spring.

The ratio in some departments is interesting. There are 353 women and 161 males in the Social Science department. A like trend is noted in the English and Journalism departments which have 243 women, 23 men and 29 women, 20 men respectively.

At the other end of the scale, the Architecture department has 689 males and only 17 females. The Mechanical Engineering department has 336 men and 2 women.

The Crops, Dairy Manufacturing, Fruit Production, Mechanical

Agriculture departments have no women students. Neither do the Aeronautical, Air Conditioning, Electronics, Welding and Metallurgy, Technical Arts or Printing departments. The Home Economics department is comprised of only women.

Living conditions studied by group

Ypsilanti, Mich.—(I.P.) A nineteen member Eastern Michigan University Committee to examine off-campus living conditions of students was formed recently.

The springboard for this committee took place last spring when the EMU Student Council called for university involvement in prescribing racial equality in renting, enforcement of sanitation and safety standards, and creation of a joint university-student-off-campus housing committee. The Council has also created the subcommittee of "general interest"

to study student behavior and safety.

Dr. William C. Lawrence, vice president of Students Affairs at EMU said, "Of significance is the scheduling of a series of discussions with school and community leaders to evaluate the responsibility of the institution and the city to the EMU student."

During their first meeting committee members directed Dr. Lawrence to seek additional seats for the committee from the city's Board of Relations and representatives of property and insurance agencies.

**We'll do anything to make
you happy.
Even bleed for you.**

This is Arrow's authentic, imported, India madras. If it doesn't bleed, you've bought the wrong shirt. Other features to look for: elbow-length sleeves, back collar button, box pleat and hanger loop. Lots of Arrow India madras shirts to choose from. \$8.00 Not too much to spend, when you consider what we're doing for you.

Bold New Bleed by

-ARROW-



WATCH FOR OUR
GRAND OPENING

AD IN FRIDAY'S EL MUSTANG

YOU CAN WIN

- A PAIR OF NOCONA BOOTS
- \$20.00 GIFT CERTIFICATE
- TWO WESTERN SHIRTS

Come in and register now

Rio Malo

SADDELERY and
WESTERN WEAR

COLLEGE SQUARE SHOPPING CENTER

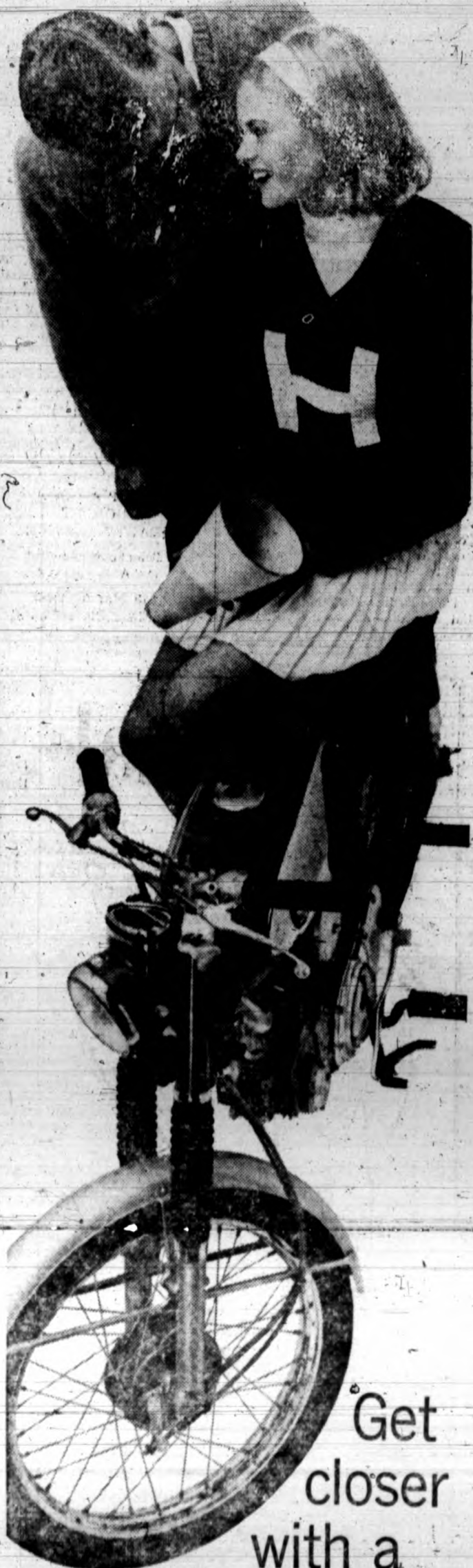
See our complete collection of famous ARROW wash and wear shirts in this season's most popular collar styles. You'll like the easy care of wash and wear.

Rowan's

782 Higuera
SAN LUIS OBISPO



Join Mustang Boosters



Get
closer
with a
HONDA

Closer to class. Closer to the fraternity house. And a lot closer to the opposite sex. Honda offers you all these advantages plus economy: price, upkeep and insurance are all irresistibly low. Why not join the crowd?

Free Brochure: Write American Honda Motor Co., Inc.
Department C-4, Box 50, Gardena, California • 1966 AHM

Dean Hayes

(continued from page 1)

"Naturally, such a suggestion has a tremendous potential effect on this college," Hayes noted. "We will want to take a long, hard look at what kind of relations Cal Poly should maintain with the EPCD. My report will no doubt give consideration to this matter."

Asked about what the vice president might be referring to when he said Hayes would have other assignments necessary to planning for the future improvement of the Engineering Division, the dean said he wasn't sure but it might entail making a report on the proposed "Engineering South" building which could go on the site of the Old Power House.

June 1 deadline set for education loan

Students planning to apply for a National Defense Education loan for next year must have a parent's Confidential Statement form filled out and turned in to the Loan Office. The forms are sent to Berkeley for processing and then they are returned to the Cal Poly loan office. Forms must be turned into the Loan Office by June 1.

Poly Royal hayride

Something new has been added to Poly Royal this year—a hayride. The Farm Bureau is arranging for four tractor-pulled wagons to run from the Men's Gym to Poly Canyon. The 35-minute round trip will feature cowboy singing and lots of hay.

The organization is also considering a separate and shorter ride for youngsters and older folks. Prices have not yet been fixed for the rides.

Editorial

WHAT'S UNSAID? ... Is there a meaning behind the reassignment of Harold P. Hayes, Dean of Engineering? Has he been politely removed as some have conjectured? We hope not and campus vice president Dale Andrews has personally assured us this definitely is not the case.

To be sure, the work scheduled for Dean Hayes is important, if not vital to the future of the engineering program of Cal Poly. The last full-scale review of engineering was 14 years ago. Thus another evaluation is long over due. In fact, all the divisions might well deserve such an examination.

From the content of the vice president's official statement it can be concluded that Dean Hayes should have his new job completed by September and be ready to again direct the operation of the Engineering Division. We hope when that time comes that there will be no question about reinstating him.

Unfortunately we can not be sure of this, nor is it clear that all is well within the upper levels of the administration. We have seen in the past that a reassignment can be the way to oblivion. Information that has filtered down over the past few years from the "higher ups" seems to present a picture of an administration where the fear of taking an opposite view is strong. It seems clear that those in charge want, if not demand, their subordinates agree with their position. Failure to do so is viewed as some sort of treason. This unhealthy situation has resulted in the loss of valuable educators by Cal Poly.

We are not saying that the engineering dean and the president had any misunderstanding. We very much hope such is not the case. Dean Hayes is one of the most popular and respected people on this campus. He has shown himself to be a dynamic and enthusiastic person. We hope the assurances of Vice President Andrews continue into September and that Dean Harold Hayes will at that time resume his duties as head of the Engineering Division.

Robert Boyd, Editor-in-Chief

May 2 deadline set for engineers tests

May 2 is the last day to file for the Engineer In Training (EIT) test. Applications are available from J. Richardson, Engineering instructor.

The test will be given on campus on Aug. 13. The cost of the test is \$20.

All engineering students, usually seniors or graduates, are required to take the test.

Taking the EIT test gives them the required registration with the Engineering Registration Board. After two or three years experience in the field, engineers then take the Engineer's License test. This will then classify them as a professional engineer in California.



When you can't afford to be dull, sharpen your wits with NoDoz™

NoDOZ Keep Alert Tablets fight off the hazy, lazy feelings of mental sluggishness. NoDOZ helps restore your natural mental vitality... helps quicken physical reactions. You become more naturally alert to people and conditions around you. Yet NoDOZ is as safe as coffee. Anytime... when you can't afford to be dull, sharpen your wits with NoDOZ.

SAFE AS COFFEE



GREENBROS

CLOTHING FOR MEN AND YOUNG MEN

Known for Good Clothing Since 1875

We carry Levi Stapprest—Slimfits—
Corduroys—Stretch—Blue Jeans

We Give S&H Green Stamps

543-0988

895 Higuera

Orange Blossom
DIAMOND RINGS



SONNET . . . FROM \$100

Ross Jewelers

799 Higuera Street

Phone 543-6364

San Luis Obispo



Mailbag

Builder not to blame

Editor:

Coping from a family of building contractors, I cannot let your comments on off-campus housing pass by without some reaction.

Building contractors are far from perfect, but to blame primarily them for the poor condition of off-campus housing is unfair. A builder follows the explicit directions of the owner and his architect. It appears that most owners of off-campus housing near Cal Poly want and will pay for cheaply constructed and unimaginatively designed apartments.

I agree with you that there is a serious problem, but I believe the situation is more complex than your editorial indicates.

Allan F. Ochs

CU inefficient?

Editor:

Your editorial concerning the inefficiency of CU Assemblies Committee in choosing and carrying out assemblies indicates a larger, more general problem with College Union — one which undermines the effectiveness of nearly all CU activities.

The structure of College Union, as set up by ASI, gives almost free rein on how, when, where or

by whom student body funds are spent through College Union. What each CU committee decides to do is nearly always done, with no check from ASI.

Who is on these committees? Who heads these committees? Who can spend students' money almost without check? Anybody. Anybody who is willing to join and be influential in the committees.

I back this up with my own experience as chairman of the Fine Arts Committee this year.

The problem does not lie only with the hard-working leadership of the CU committee heads who, for the most part, try to enact good activities. I believe the problem is the whole loose, shoddy structure of College Union and the lack of guidance it gets from the ASI office and SAC.

Your editorial implied that CU Board should do something to improve the Assemblies Committee. I recommend you attend a CU Board meeting. The Board is itself too uncoordinated and apathetic to help itself or any of its committees.

Until someone puts some ardent, thoughtful guidance into restructuring and remotivating College Union and its overseeing bodies, its total efficiency as a source of activity for and unity for this campus will seldom be higher than it is today.

Bill Decker

Campus Capers —

Kaydettes to march

Some people think getting out of bed at 6 a.m. to eat breakfast and march is a bit crazy. At least 18 Kaydettes think it's a good idea, and they've been doing it for a whole quarter.

Four hours a week of hard drill will finally pay off this quarter when the R.O.T.C. sponsored women's drill team participates in five marching events.

The Spring agenda includes the Poly Royal opening ceremonies, Los Banos and King City parades, Poly Vee and the San Luis Obispo Fiesta Days.

Health Center praised

Dr. Stephen P. Teale, member of the State Senate, told George Soares, ASI president, and George Gomes, ASI vice-president, that Cal Poly has one of the best health service systems of the California colleges.

Dr. Teale noted in his discussion with Soares and Gomes that most of the college health services were poor and that the problem needed attention.

Soares and Gomes visited the state capital during quarter break in order to talk with Governor Pat Brown. They spoke with Dr. Teale instead when their appointment with the governor was cancelled.

129 from 11:00 to 1:00 p.m.

The purpose for their being on campus at this time will be to explain the guaranteed OCB (Off-theater Candidate School) and flight training that is available to those who qualify.

Israeli students

The 18th anniversary of Israel's independence will be celebrated on Sunday night, April 17, at 8:30 p.m. in the Little Theatre with a program put on by the Cal Poly Israeli Students Organization.

The program will feature as guest speaker Avshalom Caspi, Consul General of Israel to the western states; also featured will be the Hadarim, an Israeli folk dancing troupe.

There will be a short movie, and refreshments will be served during intermission.

Student writes for publication

Popular Electronics, a magazine for electronics hobbyists, will publish an article written by Poly student, Bill Price, a junior Electronics major.

The article, entitled "Build a Little Atlas," produces a device which demonstrates the principle of servo-mechanisms. The model is a copy of one Price had seen in a science museum, but it is built on a smaller scale.

The model suspends an object in mid-air below an electro-magnet. The suspended object's position is controlled by a light beam.

Price said the device had interested him, and he had never seen anything like it in a magazine. When he found it simple to duplicate, he wrote to Popular Electronics to see if they were interested in it, and received an acceptance.

Young's Beauty Shop

"JUST A GOOD, HONEST BEAUTY SERVICE"

Telephone 543-4064
C.C.A. — N.H.C.A.

578 Marsh Street
San Luis Obispo, Calif.

EJ Mustang

CALIFORNIA STATE POLYTECHNIC COLLEGE

Published twice a week during the school year except holidays and exam periods by the Associated Students, Inc., California State Polytechnic College, San Luis Obispo, California. Printed by students majoring in Printing Engineering and Management. Opinions expressed in this paper in signed editorials and articles are the views of the writers and do not necessarily represent the opinions of the staff, views of the Associated Students, Inc., nor official opinions. Subscription price is \$2 per year in advance. Office Room 278 Empire Arts Building, California State Polytechnic College.

ROBERT BOYD Editor-in-Chief
GARY WILSHIRE Tues. Prod. Mgr.
GARY TWITCHELL Fri. Prod. Mgr.
SALLY BOSS Managing Editor
PAT RIGGINS Tuesday Editor
KAREN KINSMAN Friday Editor
STEVE RIDDELL Sports Editor
PAUL SULTZBACH Bus. Mgr.
HAI GLASSER Advertising Manager



Reporters: Brenda Burrell, Penny Duckworth, Ward Fanning, Sue Finch, Karen Froyland, Carolyn Grant, Joe Hannigan, Cynthia Hansen, Mary Huddleston, Bob Koezer, Mary Litchfield, Heather McPherson, Mike O'Connor, Judy Hgk, George Ramos, Wes Rizer, Diane Schmidt, John Spiller, Chuck Stephens, Gail Stoddard, Mike Williams.

Army recruiters here

Army recruiters will be on campus on Thursday, April 14, in Lib.

We specialize in
HIGH-QUALITY
Photofinishing
for your pictures



CAL PHOTO SUPPLY
899 Higuera
San Luis Obispo
Phone 543-3705

Dutch Maid Dairy

UNDER NEW MANAGEMENT

Come in and get acquainted with our products

FARM FRESH MILK only 88c a gallon

10 QUART PAK \$2.40

Pure Orange Juice only 69c ½ gallon

KNUDSEN - YOGURT - All flavors 20c ½ pint

Quick and friendly service

OPEN: Mon. to Sat. 8 a.m. to 8 p.m., Sun. 11-6 p.m.

San Luis Obispo

2110 South Broad Street

Go Formal...



TUXEDO RENTALS

Make Rileys Your Headquarters For
All Your Formal Needs — For Any Occasion!



Rileys College Square Fashions

RILEYS
College Square Fashions

COLLEGE SQUARE SHOPPING CENTER • 543-1421



Mike LaRoche

Winter quarter athletes honored, LaRoche, O'Bannon win top spot

Athletes of basketball, wrestling, swimming and gymnastics teams were honored last Wednesday night in the Poly faculty dining hall.

"Golden Years of Sports" was the topic of guest speaker Willard "Pete" Pederson at the banquet honoring the winter Mustang sports teams.

Players and coaches heard Pederson, former All-American foot-

ball and basketball player and now head of the Cal Poly English department, speak of the athletes of the Ruth-Grange-Dempsey era and how the stars were made even greater by the descriptive words of such "golden era" writers as Grantland Rice, Damon Runyon and Paul Gallico.

Introducing the players were basketball coach Ed Jorgensen, wrestling coach Vaughn Hitch-

cock, gymnastics coach Vic Buecola and swimming coach Dick Anderson.

The outstanding trophy awards were donated by Clarence Brown Jewelers at the dinner co-sponsored by the Block P Society and Rally Club.

Rick O'Bannon was named the outstanding member of the gymnastics squad.

Anderson declined to name an



Rick O'Bannon

outstanding swimmer stating that "13 of the 15 members" of his team were standouts.

Jorgensen named guard Mike LaRoche, a sophomore, as the outstanding basketball player and senior center Norm Angell as the most inspirational. Senior forward Bob Gravett received an award for collecting the most rebounds and senior guard John Garcia took a trophy for having the best free throw percentage.

Mike Remet, Poly's 115-pound national college division wrestling champion, was named the outstanding member of Hitchcock's squad.

Every Science, Engineering and Math student should know about CSSTP before he makes up his mind about a career.

Sign up now at your placement office to get the story on CSSTP—from the IBM interviewer April 21

CSSTP means Computer Systems Science Training Program. It's an extraordinary IBM program that enables you to use your technical knowledge and problem-solving skills in new, exciting ways. Ways that may never occur to you unless you talk to the IBM interviewer.

He'll show you how CSSTP leads to exceptional career opportunities with IBM Data Processing.

He'll tell you about the vital role of IBM's Marketing Representative. How he goes into major businesses to help solve their urgent management and control problems. He'll spell out the challenges which face IBM's Systems Engineer.

How he studies customer needs and computer requirements, and develops systems solutions to their problems.

In short, he'll describe all the unusual assignments in IBM's more than 200 offices from coast to coast. All are places where you can grow with IBM, leader in America's fastest-growing major industry: information handling and control.

So don't miss your IBM interview. Visit your placement office and sign up now. If for any reason you can't make it on campus, feel free to visit your nearest IBM branch office. Or write: Manager of College Relations, IBM Corporate Headquarters, Armonk, N.Y. 10504.

Whatever your plans, before you hit upon a career, see if IBM doesn't make a hit with you.

Whatever your area of study, ask us how you might use your particular talents at IBM. Job opportunities at IBM lie in eight major career fields: (1) Marketing, (2) Systems Engineering, (3) Programming, (4) Research and Development, (5) Engineering, (6) Manufacturing, (7) Finance and Administration, (8) Field Engineering. IBM is an Equal Opportunity Employer.

IBM
DATA PROCESSING DIVISION

*Coming
Next Week!*

'If You Ask Me...'

A short bit of fame, opening day heroes

Outfielder Dain Clay and pitcher Rod Lisenbee of the Cincinnati Reds had shortlived fame during the 1945 major league season. To be exact, it lasted one day—opening day—for each. In the Red's first game, they beat the Pittsburgh Pirates, 7 to 6, in eleven innings. Clay drove in five runs, four with a grand slam homer which was the only home run he hit the entire season. And Lisenbee pitched two innings in relief and was the winning pitcher. He didn't win another game that season.

Bello's
SPORTS SHOP

Authorized Dealers For
CONVERSE

Chuck Taylor Allstars
High top or low cut, Black or White



\$8.95

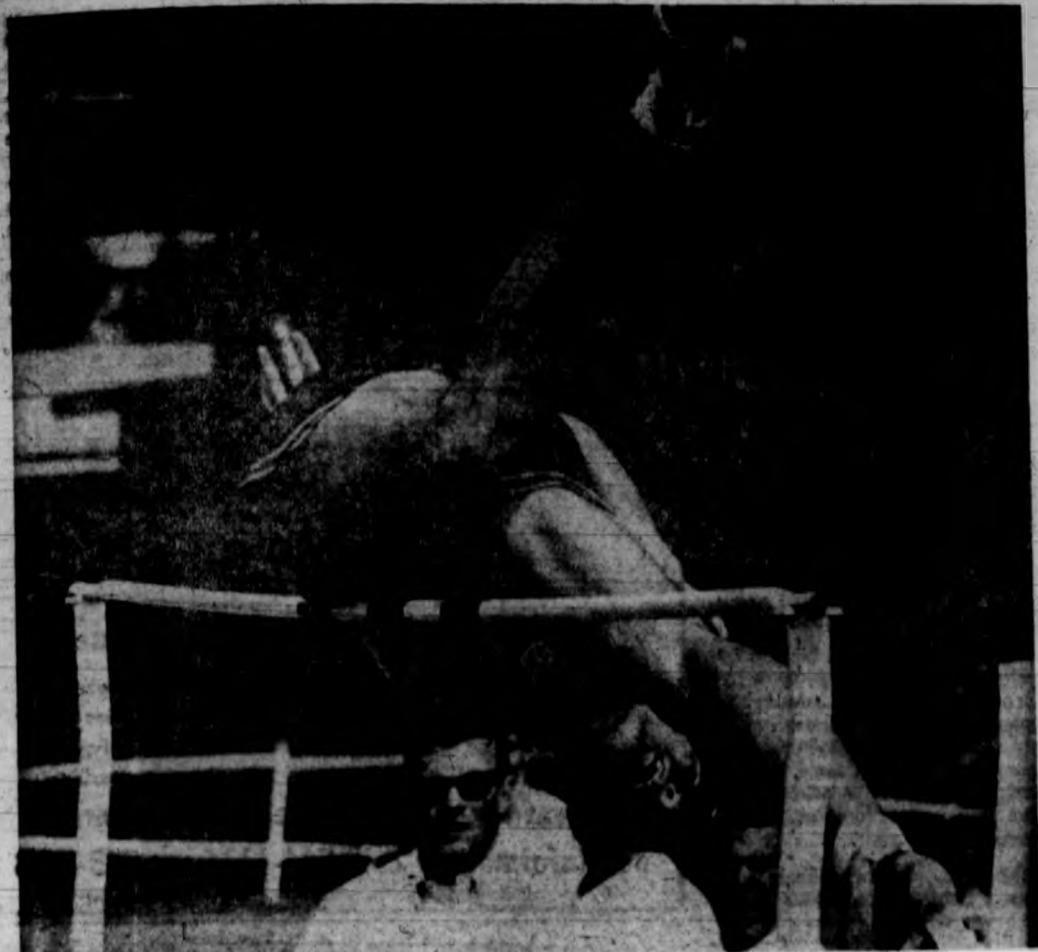
GYM SHOES

\$3.98

Priced from

Handball Gloves ... \$4 pr.
Handballs 95c
Sweat Socks from 50c
Supporters, Bike No. 10 90c

886 MONTEREY ST.
Open Thursday 'til 9



TOPS BROTHER . . . Cal Poly's Richard Jones it to set a new school record of 6'8 1/2" skims the high jump bar but manages to keep above

Photo by Williams

Poly's Baker betters record, Jones breaks brother's mark

Breaking the mile-record-habit seems to be quite a task for Cal Poly's only double-winner, Frank Baker, as the lanky running ace again lowered his best mile time to defeat Cal State Hayward's distance star, John Loden in a 4:13.3 clocking, Saturday.

Despite Baker's double efforts, also winning the half-mile in 1:54.9, the Mustangs lost to Hayward's powerful track team 84 to 61 on the Mustang oval.

Another record breaking performance came in the high jump when Poly's Richard Jones broke his older brother's record by leap-

ing 6'8 1/2". A heartbreaking second was awarded to Jones as Hayward's Larry Cormier also cleared the same height, but won because of fewer misses at lower heights.

Richard Terrell, competing in seven events, won the long jump with a 22' 6" effort and placed in the furlong and high hurdles.

Recovering from leg injuries but winning their events were Benoit (Benny) Laville in the javelin and Bill Patterson in the discus. Their throws were 215' 6"

and 163' 9" respectively.

Other winners for Poly were Jerry Pyle pole vaulting 14 feet and John Dana with a 58.8 clocking in the 440 intermediate hurdles.

In freshman competition, visiting Cuesta J.C. lost to Cal Poly's squad 80 to 59. Outstanding freshmen were sprinter Ruben Smith scoring 19 points and distance runner Allen Nerell.

Sports car club to hold meeting

Two much in demand films from the Mercedes-Benz film library will be shown at the regular meeting of the Cal Poly Sports Car Club on Wednesday, April 20.

They are "Tough Miles to Victory," a color film on the 1965 Argentine Road Race, and "Safety First" a short film on the safe construction of cars, a popular topic today.

Everyone is invited to this meeting to be held in Sci. A12 at 7:30 p.m.

Information about the fifth annual "Rally By the Sea" will also be available at this meeting.



Cosmetics
Magazines
Drugs

We Cash Your Checks

Hurley's Pharmacy

In College Square
543-5950

New Youth fares

now in effect for American, TWA and United Airlines

1 1/2 fare basis for ages 12 to 22
Call us for details.

San Luis Travel

437 Marsh St.

543-4967

Baseballers take win from San Fernando

The Mustang varsity horsehiders split two games last weekend with the San Fernando Valley State Matadors, winning the game on Saturday by a score of 6-5 and losing on Friday 2-1.

The game on Saturday was highlighted by home runs by the starting pitcher Chase Gregory and outfielder Jim Blanks.

Gregory was relieved in the fourth inning by Jim Montana

who went for three more innings. Gary McTaggart relieved Montana in the eighth and was credited with the win.

On Friday the Mustangs dropped a close game in the tenth inning on a Matador home run.

Bob Dorn went the whole way for the Mustangs pitching his best game of the season but nevertheless taking the loss.

PHONE ORDERS TO GO



Pizza Pantry

486 MARSH ST.

Dial 544-2600 SAN LUIS OBISPO

Where you get 13 varieties of Pizza and the Dutch Soft Pretzels.

OPEN Sun-Thur. 4-12 p.m., Fri. and Sat. 4 p.m.-2 a.m.

Live Music and Dance Wed. & Sat. 9 p.m. - 1 a.m.




CHEVROLET

Sales & Service

Your Chevrolet deserves the best! It costs no more to trust your to the expert, qualified servicemen of Mel Smith Chevrolet. You'll receive fast courteous service, too.

STANDARD and UNION Credit Cards Accepted

"Your COMPLETE Satisfaction Is Our Business—Always"

Mel Smith Chevrolet

1039 Monterey—San Luis Obispo—543-3221
OPEN 8 A.M. TO 8 P.M.




Young's

GIANT FOOD

The Largest and Most Modern Supermarket in San Luis

(On the way to the airport)

Edna Road off South Broad St. San Luis Obispo

Specials Good From Wed. April 13 to Tuesday April 19

I WIN MONEY — Every card with 15 weekly visits wins 50c to \$500.00 — No Purchase Necessary to Participate. 15 free punches and you collect! **EVERYONE CAN WIN CASH!**

TIDE

Giant Size

49¢

Metrcal

Diet Drink

4 FOR \$1.00

Gerber's Strained

BABY FOOD and JUICE

12 for \$1.00

Junior Size

7 for \$1.00

Del Monte

FRUIT COCKTAIL

No. 303 Can

Only 19c

GIANT FOOD COUPON
MAXWELL COFFEE

1 lb.	...	\$.59
2 lb.	...	\$1.39
3 lb.	...	\$1.99

EXPIRES APRIL 19 1966

GIANT FOOD COUPON

MORTON SALT

Plain or Iodized

5 cents ea. Regular Size

EXPIRES APRIL 19 1966

Classical guitarist plays in concert tomorrow eve

A master of the classical guitar, Laurindo Almeida, will perform in concert tomorrow night at 8:00 p.m. in the Little Theater.

The concert is sponsored by the College Union Arts Committee. When tickets went on sale last week there were 500 available. As to presstime yesterday all the tickets had been sold.

Almeida learned the guitar at the age of seven while he watched and listened as his sister was instructed in the instrument. Natural technique and talent were quickly developed in this musical genius.

He has gained worldwide fame through his magnificent performance with the instrument although he is equally adept with a Spanish or electric guitar in his hands. There is a touch of greatness in every note played by Almeida.

Before leaving his native Brazil for the United States in 1947, Almeida had gained fame for his radio work. He came to Hollywood and had the opportunity to meet and work with many of the great musicians of the day. Later that year he joined the Stan Kenton band as a featured performer. In 1952 he struck out on his own career. Since that time he has achieved wide acclaim for his classical guitar albums, scoring for motion pictures, arranging and making personal concert appearances.

The Almeida guitar has been heard on the concert stage in distinguished recitals at Carnegie Hall, the Chicago and San Francisco Opera Houses and the Hollywood Bowl.



—Laurindo Almeida

"SUPER-SUB" LINZ

When Phil Linz was with the New York Yankees, he was known as the "Super-Sub" because of his ability to do almost any job well when he was called off the bench. In recalling his first season with the Yankees, Linz says: "I was their number one right-handed pinch runner."

Texas Tech initiates system to benefit foreign students

LUBBOCK, Texas (I.P.) The Student Senate's Foreign Students Committee is initiating a program this year to help Texas Technological College's international students, which is referred to as the host system.

One American student will serve as host or "buddy" to a foreign student during his term at Texas Tech. The purpose is to match a foreign student with an American student so both can benefit during the school year.

"The foreign student will benefit by having someone to explain American customs to him, to help him with registration, to answer his questions and to get him involved in campus activities and organizations," said Don Henry, committee chairman.

"The American will benefit by having an opportunity to learn more about a foreign country, to learn some of its customs and to help the foreign student. The time when we most need to help foreign students is when they first arrive on campus at the beginning of the year.

"They do not know their way around campus, are not acquaint-

ed with American customs and usually have some difficulty with the English language. By starting the program now we hope to have an American host ready to work with each foreign student as he arrives on campus.

"We want to get the foreign students acquainted with individuals who can get them involved in campus activities, encourage

Oldest state college

The oldest of the California State Colleges is San Jose State College which dates back a century.

them to attend athletic events and study with them. We hope to have at least one American for every foreign student." This year there are 70 international students enrolled at Texas Tech.

The Americans who participate in this program will form a Foreign Students Host Organization which will meet and work as a group to plan activities for foreign students.

PLUSH LIVING!

LIVE LIKE A KING

ON \$42 PER MONTH

Space Available in a Large House

- Completely Furnished
- Television
- Ample Storage Space
- Large Backyard

- Deep Freeze
- All Utilities
- Laundry Facilities
- Ample Parking

IDEAL FOR STUDYING — REASONABLE RATES

For information call 544-1116 or 543-3653



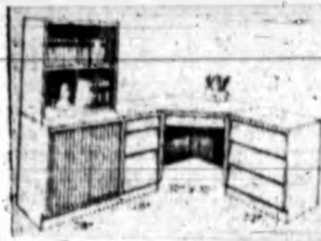
for cones, shakes, splits or a delicious charbroiled hamburger or hot dog

12 No. Broad St.

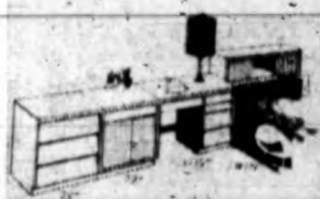
(Just off Foothill)
San Luis Obispo

Run by the
Ted Foster Family

543-7946



5 PIECE CORNER STUDY
in solid hemlock \$103
in solid oak \$145



4 PIECE STUDY GROUP
in solid hemlock \$83
in solid oak \$110

To begin with, we're particular about the wood we use. Nothing but solid wood. Hemlock, Ash, and Walnut. Because they offer the best combination of beauty, durability and easy finishing.

And when it comes to construction, nothing but custom features throughout. Double secured tops. Dimpled hardwood drawer sides and backs. Corner blocks for extra strength. Extra deep, precision-set drawers.

We make a wide selection of styles and sizes. We have a lower drawer line. Flat drawer line. Top line. Sculptured base line. And wall line. Over 1,000 pieces in all. And we don't play hard to get. Woodland is open stock. You can get what you want when you want it.

And you can decorate it the way you want it. Stain it. Paint it. Any color you choose.

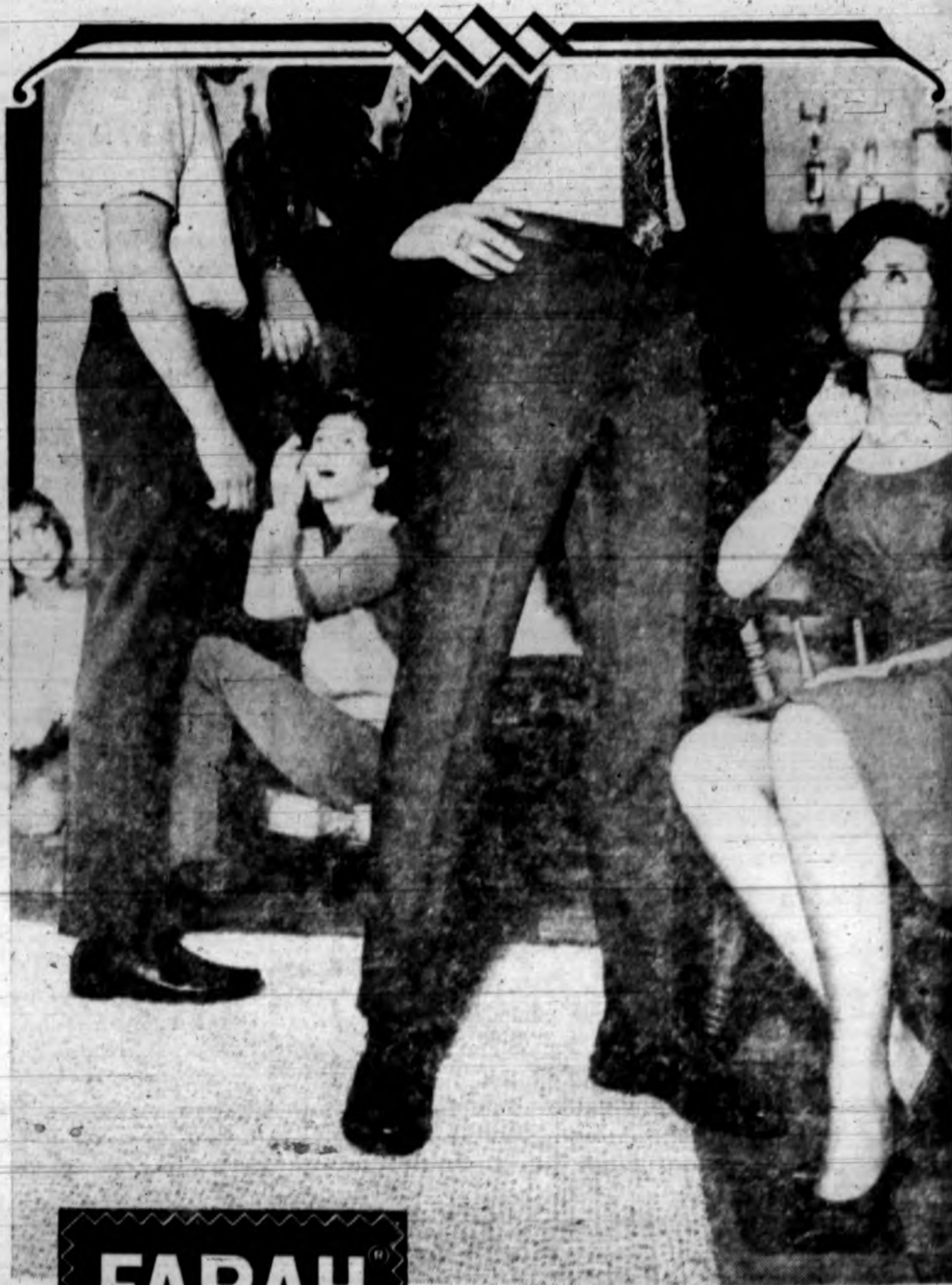
What's more, you can get our furniture with or without laminated plastic tops in white or walnut. It's scratch resistant. Heat won't hurt it. Neither will fruit acids or boiling water.

Don't settle for imitations. Look for the Woodland label.

Glidden Paint Center

994 Foothill Blvd.
San Luis Obispo

College Square
Shopping Center



FARAH

SLACKS, JEANS and WALK SHORTS

with

FaraPress

NEVER NEED IRONING

**YOUR BEST
DRESS SLACKS**
at Casual Slack Prices!

FARAH MANUFACTURING CO., INC. • EL PASO, TEXAS