

WIN ONE—LOSE ONE!

The victory starved Mustangs have finally gained revenge. After a dismal season last year, the Mustangs bounced back to defeat San Francisco State, 21-20, on Sept. 18 in the Bay City.

There was no score in the first quarter, but early in the second period the Mustangs scored on a 23-yard pass from QB Walt Raymond to end Roy Wright. Larry McCurry kicked the PAT and Poly had a 7-0 lead.

The Gators fought back and

after the kick-off took it downfield in 15 plays where halfback Tom Piggee plunged the final two yards for the score. The Gators scored again after Walt Raymond's pass was intercepted and Gator quarterback Don McPhail passed to end Mike Meyer for the score. The PAT was good and at halftime, they lead by a score of 14-7.

After Poly received the second half kick-off, the Mustang offense stalled and they were forced

to punt. The Gators immediately fired back as Jim Crum romped for 47 yards but the PAT attempt failed. The Gators now had a substantial lead of 20-7.

The ball changed hands several times before the Mustangs caught fire. Starting on their own 11 yard line, Poly rolled 89 yards in nine plays with end Bill Zolner taking a 21 yard aerial from quarterback Raymond for the

scoring play. McCurry kicked his second PAT and cut the margin to 20-14.

The Mustangs gained possession as sophomore safetyman Chuck Merino intercepted a pass and returned the ball to the Poly 37. Raymond moved the team well and after seven plays, halfback Dave Rensch went through left tackle for the score. Sure footed McCurry kicked his third straight PAT of the game to give

Poly the game-winning point.

Victory can be easily described; A complete team effort. Quarterback Raymond showed poise and leadership abilities as he moved the Mustangs well and got good efforts from his team-mates.

Poly fought back like they really wanted to win and it was a welcome sight. If the Mustangs can continue to play as a team and keep place-kicker McCurry's toe healthy, it should be an interesting season.

el mustang

CALIFORNIA STATE POLYTECHNIC COLLEGE

VOL XXVIII, No. 2

SAN LUIS OBISPO, CALIFORNIA

TUESDAY, SEPTEMBER 28, 1965



Satchmo here to morrow

Louis "Satchmo" Armstrong, known as one of the foremost of all jazz musicians and showmen, will appear in concert in the Men's Gym tomorrow night at 8 p.m. Being sponsored by the College Union Assemblies Committee, the show's cast will also include Armstrong's famed "All-Stars."

According to the sponsoring

committee, student general admission tickets are \$2 and \$2.50 for reserved seats. They are available in the ASI office.

Armstrong is the founding father of a particular style and sound in trumpet playing from which numerous techniques have evolved. However, it's the famed musician's almost 60 years in the business which makes the great-

est impact on the public. What people enjoy most about "Satchmo" seems to be his highly-expressive singer-comedianism which will undoubtedly be obvious during his concert here.

The College Union committee, which expects a sell-out crowd, has said that the Men's Gym is being prepared to accommodate 3,500 persons.

Strauss named head librarian

L. Harry Strauss, a member of the library staff for the past four years, was named over the summer to be head college librarian by President Julian A. McPhee.

Strauss will replace Dr. Emerson Jacob, who resigned in August to accept a position as college librarian at State University College, Fredonia, N.Y.

The new librarian earned a bachelor of science degree from George Williams College in Chicago, and received a master of arts from the graduate library school, University of Chicago. He is co-author of a book, "Look, Listen and Learn", and is author or co-author of numerous articles on audio-visual and adult education.

Enrollment over 7200; male-female ratio cut

Breaking fall's enrollment figure by 341 a record 7218 students enrolled in Cal Poly during the two days of registration.

College Registrar, Jerald Holley, reported that the largest division is again Engineering with 2194 students. The Applied Arts ranks second in size with 2108, followed by Agriculture (1630) and the Applied Sciences (1226.)

A breakdown of enrollment figures reveals that the Architecture Department has 724 students. Moving into the second position is the Social Science Department with 544. The Electronics, Business Administration and Home Economics departments complete the top five list with 485 and 476 and 468 students respectively.

The all important male-female ratio dipped below the three to one mark for the first time in Cal Poly's recorded history. The Registrar's Office reported that 5147 men and 1706 women are now enrolled.

The heaviest concentration of men was in the Freshman class with 1528, followed by the Senior men who numbered 1303. The largest number of women students is also concentrated in the Freshman class as 710 first year coeds signed up for courses.

Other interesting statistics include: 14 Horsebreeding majors; 16 Biochemistry majors; 65 Journalism majors; 18 Ag Education majors; and 26 students without a declared major.

McPhee reorganizes Poly administration

This summer President Julian A. McPhee announced that various administrative duties, responsibilities and personnel would be reassigned, effective September 1.

McPhee included in his announcement an extensive delegation

of authority for operations of each of the Cal Poly campuses to the local campus chief executive officer, presently the Dean of the College.

Included in the reassignment of duties and responsibilities was the establishment of positions equivalent to that of dean of academic planning to assist the campus executive officer, who is Dale W. Andrews on this campus. The dean of academic planning position is presently unfilled at this campus.

Several other positions were also assigned to the campus executive officer on a staff basis on each campus. At this campus, the personnel assigned are Chester Young, administrative assistant; Harold O. Wilson, director of staff services; James Landreth, personnel business management specialist; Donald McCaleb, public relations coordinator; Douglas Gerard, building coordinator; and George Beatie, class scheduler and coordinator of special services.

Personnel assigned to the collegewide administration are Administrative Vice President, R. E. Kennedy who will serve on a staff basis in assisting the president on collegewide and statewide matters.

There will now be three college wide staff specialists in the areas of institutional research, catalog policy and preparation, collegewide budget requests, curriculum, accreditation, publications, etc. The staff specialists are David W. Cook, Lowell Duniagan and Douglas Miller.

Also on the collegewide administration will be Les Vanoncin, director of extension services; Gene Brendlin, foundation manager; Ken Kitch, Director of Vocals Educational Center; Howard West, assistant to the president; and Col. William B. Boyce, director of developmental affairs, a newly established position. Col. Boyce is retiring from his position in the army and Professor of Military Science at the San Luis Obispo campus, effective November 1.

According to the administration, the reassignments were made to strengthen the effectiveness and administration of each of the local campuses of Cal Poly. Accordingly, the change will reduce the staff of the collegewide administration and strengthen the staff at the local campus.

Language lab has expanded program

Robert Boothe, director of the language laboratory, has announced a new comprehensive program to include a variety of foreign languages, English for foreign students and facilities for conducting lectures or seminars by telephone.

The foreign language program includes a new four-unit course in Spanish. This course, listed under the English department, emphasizes spoken Spanish and is primarily for those with no previous knowledge of the language. However, those with one or two years of high school Spanish may enroll if space permits.

In addition to Spanish, pre-recorded, self-study courses in Japanese, French, German, Italian, Russian, Modern Greek and English for foreign students will be available.

These courses are of two types: One designed mainly for travelers, another is a more comprehensive course of study.

The tele-lecture program is another aspect of the new language lab project. It is not yet fully developed, but facilities are now available for instructors who wish to have a lecture or seminar conducted by telephone.

In the lab are 40 booths which not only permit the students to listen to the lecturer but also to ask questions. This facility will make it possible for instructors to have their students consult with outstanding authorities who could not be brought to campus.

According to Boothe, the English Department experimented with two tele-lectures during the Spring Quarter and found that the students were greatly stimulated and excited by the experience.

The lab will be open three hours each day for general campus use. For further information concerning the language lab contact Robert Boothe in English 208E, ext. 2595 or in the language lab.

Record price for Clyde

Five Cal Poly animal husbandry students are busily figuring out how to best utilize nearly \$3,500 following sale of their Hereford steer "Clyde" which won the Grand Championship at the Los Angeles County Fair earlier this week.

Richard Thomas Anderson of White Swan, Wash.; Alfred De Rose, Jr., Handford; Edward Botello, Jr., Honolulu, Hawaii; Thomas C. Irwin, III, of Cheshire, Ore.; and John Vanzee, Long Beach, are faced with the problem after the steer, which they owned in partnership, was sold during the sale which climaxed

the fair September 22.

Von's Markets of Southern California paid the students \$3.55 per pound for the 1,000 pound animal.

Bred and raised on the campus farm, he is one of 15 head of cattle owned by the student-partners. Their venture into the livestock production is being financed by the school's unique "Agriculture Enterprise Program."

The college loans its students funds necessary for such ventures. Loans are repaid with profits from such projects, and the student-businessmen keep and share their financial gain.

Clyde's victory at the Los Angeles Fair gave Cal Poly student-owned animals two consecutive Grand Championships at that show. Another Hereford "Sam", also owned by a group of five animal husbandry students weighed 1,005 pounds, and was sold at \$2.25 per pound at the sale.

CONSERVATIVELY speaking

by Bob Koczor

If an award was to be presented to the organization on campus which has the most encompassing charter, I'd not be presumptuous in predicting that the Poly chapter at the California College Republican club (CCR) would win it.

For according to the club's president, their primary purpose is to assist all Republican candidates win elections. This lack of discrimination is clearly illustrated in the first edition of their political newsletter, *Trumpeter*.

On one page, an unpaid political advertisement glorifies Rep. John Lindsay (R-NY) as the "articulate and energetic young man needed in the Republican Party." On another page the CCR pledges its support for either Senator Kuchel or Ronald Reagan over incumbent Brown in the gubernatorial election next year.

This club ignores vast chasm between Lindsay (heralded by the ADA as one of their most liberal congressmen) and Conservative-infused Regan, Mr. Lindsay, Senator Kuchel, or Barry Goldwater—is that he be a card-carrying member of the Grand Old Party!

The tragic flaw of this club is that it disregards political principles. Agreed, the CCR believes in "freedom of the individual and decentralization of government" et al. But what of Senator Byrd, Senator Lausche, and Senator Robertson (all democrats) who have voted for these principles more than most Republicans?

Should these Democrats be voted against merely because an elephant-button isn't attached to their lapel? Must the members of the CCR overlook an individual candidate because he lacks the

party label of their Omniscient Party?

For emphasis-sake, cast your vote for candidates in each of the four following hypothetical elections:

Rep.	Dem.
Goldwater vs. LBJ	
Javits vs. Byrd	
Tower vs. Humphrey	
Lindsay vs. Lausche	

If you had voted the straight ticket for either party, you would have voted for two Conservatives and two Liberals. If you had voted according to political principles either as a Conservative or as a Liberal, you would have voted for two Republicans and two Democrats.

This illustrates that no politically perceptive American can vote the straight-party-ticket without relinquishing some principles of his own political philosophy—if he has any.

This club seems to even deny the possibility that the Democratic Party could nominate a more qualified and experienced candidate (in principle and practice) than that by the GOP. Ostrich-like, the CCR fails to realize the incongruity in supporting Murphy last year and, quite possibly, cheering Kuchel next year.

I sympathize with those Conservative members of the CCR who must, at least, tolerate having a liberal Republican raised to the zenith of the political heavens by their club's endorsement. I also pity those students laden with the liberal ideology who must tolerate a "Goldwaterite" as their nominee.

Let's be honest. For as as collegians, party labels are meaningless. The real division of political opinion is between Conservatism and Liberalism. The present setup of having a Democrat Club and a Republican Club on campus is nothing more than having Tweedledee and Tweedledum exhibited!

Wrestlers' Meeting

Wrestling coach Vaughn Hitchcock would like all varsity candidates for the wrestling team to attend a meeting at 7:30 p.m. Thursday in Room 219 in the Men's Gym.

Mobile Population

One million American children move from one state to another, and two million move from one county to another each year.

Barnes & Noble

COLLEGE OUTLINE BOOKS

INEXPENSIVE

EASY TO READ QUICK REFERENCE

HANDY AS AN EXTRA SET OF NOTES

MORE THAN 100 TITLES

USE BARNES & NOBLE FOR THE FOLLOWING AND MANY OTHER COURSES

BIOLOGY	CHEMISTRY
BOTANY	PHYSICS
BACTERIOLOGY	MATHEMATICS
ZOOLOGY	U.S. SINCE 1815
LITERATURE	EUROPE SINCE 1815
ECONOMICS	PSYCHOLOGY

There's a book for most every course. AMONG STUDENTS IN THE KNOW IT'S BARNES & NOBLE OR NO SHOW

Get a book now for every class at your Downtown Bookstore Hdq's.

GABBY BOOK STORE

HIGUERA & GARDEN

SAN LUIS OBISPO

College Students

Faculty Members

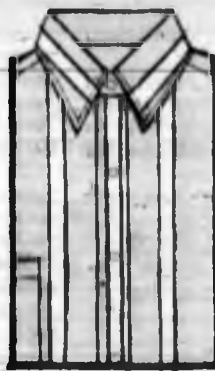
College Libraries

SUBSCRIBE NOW AT HALF PRICE

Clip this advertisement and return it with your check or money order to:
The Christian Science Monitor
One Newbury St., Boston, Mass. 02115

☐ 1 YEAR \$12 ☐ 6 mos. \$6
☐ COLLEGE STUDENT
☐ FACULTY MEMBER

Traditional Shops for Young Men



"THIS-MINUTE" LOOK FROM VAN HEUSEN

from the "417 V-Taper" Collection—yonger by design

Here is "traditional" with the look of today. Vital. Alert. Authentic. With painstaking attention to detail...like button-down collars that roll just that way. And sport shirt fabrics that shout in a disciplined whisper. 5.00

Open at Wickenden's Charge Account



Open 'Til 9:00 Thursday

Monterey and Chorro, San Luis Obispo

Phone 543-6145

Kuan Yin Book Store

Invites All Students To Sell Their Textbooks On Consignment

- New Books
- Used Books
- Antiquarian Service

1043 Higuera 543-4381

CAGLE'S

WELCOME Cal Poly Students

NEW PARK GROCERY

Across from Park on Osos Street

OPEN

Fresh Fish Every Thursday

8 a.m. to 7 p.m. Weekdays
8 a.m. to 6 p.m. Sundays

We Give Blue Chip Stamps

OPEN DAILY 8:15 to 5:15

BOB'S CAR WASH

CLOSED SUNDAYS

WASH and JET WAX — \$2.00

DISCOUNT

with purchase of
5 Car Wash Tickets — \$ 9.00
10 Car Wash Tickets — \$17.50

1023 MARSH STREET

"Hi, Mom . . ."



Courtesy of San Francisco Examiner

El Mustang

CALIFORNIA STATE POLYTECHNIC COLLEGE



MAUREEN LUND Editor-in-Chief
ROBERT BOYD Managing Editor
SALLY BOSS Tuesday Editor
JO WARREN Friday Editor
GEORGE RAMOS Sports Editor
JACK HALSTEAD Photo Editor
HAL GLASSER Advertising Manager
F. D. JEANS Student Advisor
RED HEESCH Tuesday Prod. Mgr.
CHAD CHAMPLIN Thursday Prod. Mgr.

Reporters: Ed Stepanek, Bud Ross, Arlene Todd, Jim Moore, John Shaw, Carolyn Grant, Karen Kinaman, Bob Koczor.
Cubs: Michael O'Connor, Oliver Morgan, Marilyn Ehler, Christy Caminiti, Karen Foyland, Diane Schmidt, Richard Odell, Donna Bohrer, Steven Riddell, Patrick Higgins.

Published twice a week during the school year except holidays and exam periods by the Associated Students, Inc., California State Polytechnic College, San Luis Obispo, California. Printed by students majoring in Printing Engineering and Management. Opinions expressed in this paper in signed editorials and articles are the views of the writers and do not necessarily represent the opinions of the staff or the Associated Students, Inc. or official opinions. Subscription price is \$3 per year in advance. Office Room 226, Graphic Arts Building, California State Polytechnic College.

Fall play casting completed

Tryouts for the fall production of Harvey, to be held September 21 and 22, drew a large turnout.

More than forty students read for the 12 parts in the play. Eleven of the parts were filled.

The cast includes Robert Knowles, Arthur Fritz, Dennis Kiekensop, Dan McKee, Roger Lowry, Sherry Vogt, Beverly A'Hearn, Sandy Ellis, Sharon Arnold, Dotty Weidman, and Nancy Routup.

The Cal Poly production of the Broadway comedy by Mary Chase is under the direction of Murray Smith, English Instructor, Jesse Arnold, an Ornamental Horticulture student, is the associate director. The play will be

presented November 5 and 6, and 19 and 20.

Harvey, produced by the College Union Drama Committee and the English and Speech Department, concerns a well-to-do alcoholic who is humorously led in and out of adventure and trouble with his imaginary six-foot rabbit named Harvey.

AMATEUR RADIO SOCIETY

The Amateur Radio Society at Cal Poly is celebrating its 17th year as an active club on campus.

KAPPA MU EPSILON

Kappa Mu Epsilon, a national honorary mathematics society at Cal Poly, was chartered in 1957.



*
Complete Brake Service
Front End Alignment
Allen Tuneup Equipment
*

**KEN'S
SHELL
SERVICE**

Foothill & Broad 543-7516

Authorized Dealers For

CONVERSE

Chuck Taylor Allstars
In Black, White or Blue



\$8.95

GYM SHOES

Priced from \$3.98

Handball Gloves \$4 pr.
Handballs 95c
Sweat Socks from 50c
Supporters, Bike No. 10 90c
Tennis Equipment

Bello's
SPORTS SHOP

886 MONTEREY ST.

Open Thursday 'til 9

NEARLY NEW
FURNITURE
See 'Lovable Gus'

We'll sell you what you need and buy it back when you leave Cal Poly.
We have used couches, T.V.'s, stoves, tables, etc.—at a special price on unfinished chests—a drawer chest only \$14.95
Corner Pacific & Oros Phone: 543-3128

Used Cameras, Guns,
Radios, Guitars,
and Watches

We Sell and
Service TIMEX
Watches



**San Luis
Jewelry and Loan**

Expert Watch, Jewelry, Clock and Electric Shaver Repair
Large Selection of Watch Bands and Straps in All Sizes

Largest Selection of Costume Jewelry
and Gifts in the Area!

FREE ENGRAVING WITH ALL PURCHASES

974-A Monterey Street

543-2314

HOMES • RANCHES • INDUSTRIAL • COMMERCIAL

1st & 2nd TRUST DEED LOANS

BURT POLIN REALTY

Frank Truchan • Mary Rhodes • Dorothy Hasser

Bank of America Bldg.

970 Foothill Blvd.

544-1318



for cones, shakes, splits or a
delicious hamburger or hot dog

12 No. Broad St.

(Just off Foothill)
San Luis Obispo

Run by the
Ted Foster Family

543-7946

Tropicana Village

The Newest Residential Suites for Cal Poly Women Students

**NOW TAKING RESERVATIONS
FOR FALL, WINTER AND
SPRING QUARTERS**

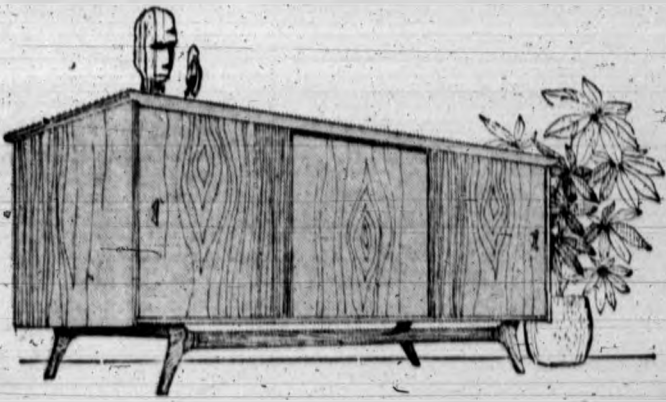
— featuring —

- ★ CONTINUOUS BUS SERVICE from parking lot to campus every school day.
- ★ COMPLETE DINING COMMONS — 19 meals weekly (Lobster, Steak, or Prime Rib every Saturday night.)
- ★ LARGE HEATED POOL — also hydrotherapy pool.
- ★ GIGANTIC GUEST LOUNGE & GAME ROOM with color TV.
- ★ 24 HOUR LIBRARY ★ DO-IT-YOURSELF BEAUTY SALON
- ★ TELEPHONES & OTHER LUXURY SERVICES

DELUXE 3 AND 5 STUDENT SUITES — Living Room, 2 Baths, Oversized TWIN Beds, Thick wall-to-wall carpets, large wardrobes & walk in closets, individual desks, bookcases.

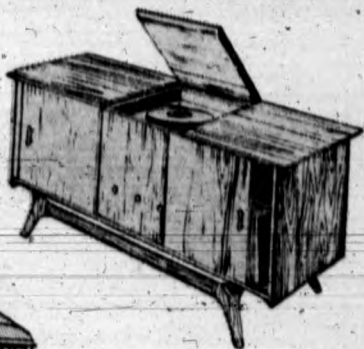
CONTACT RENTAL OFFICE: 55 Broad—Phone 543-2300 between 1 & 5

Hi-Fi Cabinets

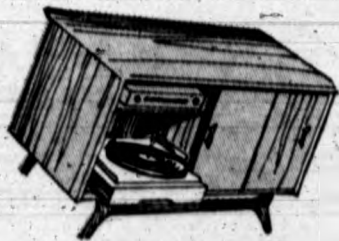


Hi fi Cabinets—
We have a fine
Selection of unfinished
Cabinets just right
for your room or
apartment. Come in and
browse.

Free
Delivery



Free Finishing
Instructions



Quality Unfinished Furniture
Hardwoods

Brooks Woodcraft

1459 Monterey St.

544-2505



OUTSTANDING TEACHERS . . . Dr. Milo E. Whitson, head of the Mathematics Department, and Joy O. Richardson, a member of the Mechanical Engineering Department faculty, are congratulated by J. A. McPhee, college president, on their selection as this year's outstanding teachers.

Two honored by faculty

A highlight during the annual Fall Staff Conference was presentation of "outstanding teacher" awards to two long-time members of the faculty.

Recipients of the college's second annual awards honoring outstanding performances by its

teaching staff Dr. Milo E. Whitson, head of the Mathematics Department, and Joy O. Richardson, a member of the Mechanical Engineering Department faculty.

Their awards, each in the amount of \$100, were made possible by a grant to Cal Poly from

the Sears Roebuck Foundation.

The presentations, made by Cal Poly President Julian A. McPhee, preceded the president's speech to the faculty entitled, "My Hope For Cal Poly's Future."

Commenting on the college's two-year-old program for honoring outstanding teaching among members of its faculty, President McPhee complimented the work of the committee which handled the selections.

This year's recipients were selected from a group of 10 instructors, nominated by their students, fellow teachers and former students.

Your auto need repair? Go to Hobby Garage

With the limited amount of space available for parking cars, the Hobby Garage continues to

be the place where students do car washing and automotive repair on campus.

Located just east of Palomar Residence Hall on Mountain Drive, the garage is supported by the Associated Students, Inc., and is run by two student managers under the direction of the Activities Office.

Six spaces for auto work have been reserved in the lower parking lot next to Palomar. Car washing facilities also exist in the area, with space enough for four vehicles.

Poly students, living on or off campus, are able to use either of these facilities for free with a student body card.

Student body regulations governing the Hobby Garage require that students working in the reserved spaces fill out a vehicle repair authorization. This form, which is free, is available from either of the garage managers. Cars parked in the spaces without authorization will be issued a citation.

The garage provides arc welding, gas welding and cutting tools to qualified persons. Basic automotive repair tools and engine removal equipment are also available. Since last Spring the garage has acquired a new timing light, a torque wrench, and various drills and sockets.

The two managers, Richard Strauss and Dennis Fazio, are quite knowledgeable about auto mechanics and will be glad to offer suggestions on car problems.

As an extra service, students can work on their cars in any of four covered spaces from one to four hours for \$1, plus 25 cents for each additional hour.

Further information can be obtained from the garage managers in Palomar No. 8.

Aero wives to meet

The first meeting of Cal Poly's Aeronautical Engineering Wives' Club for the school year will be held on Oct. 12 at 7:30 p.m. in the home of Irene Holbrook, 187 Marsh Street (across from the Pizza Partry).

All new and returning Aero wives are invited to attend. Activities of the year will be planned at this time.

Officers for the coming year are Mary Aley, president; Irene Holbrook, secretary; Dennis Rogers, treasurer; and Mrs. Charles Davis, advisor.

More aid for Cal Poly students

\$50,000 has been allocated to Cal Poly through the Economic Opportunity Act of 1964 for financial aid to students from low income families.

Under the provisions of this act students who qualify will be placed in jobs where they can work up to 15 hours per week at a rate ranging from \$1.25 to \$2.50 per hour depending on the qualifications of the student and the requirements of the job.

Students eligible for this program can also receive benefits from the National Defense Education Loan Program.

In order to qualify the student must be a citizen of the United States or a foreign student who intends to become a permanent resident.

The applicant's total family income is adjusted on a scale according to the number of dependents in his family. A student is eligible for the program if his annual family income with one dependent is \$3,200 or less. The scale continues upward in proportion to the number of dependents a student has.

Married students are also eligible for this program if both spouses' parents meet the low-income requirements.

The only other requirement is that the student must carry a full class load and maintain a satisfactory grade point average.

Any interested students who think they might qualify for this program are advised to contact Mr. Lorraine Howard, associated dean of women, for further information.

RENT A NEW FORD



ALL-NEW
1965
MODELS!

RENTAL PRICES

TYPE OF VEHICLE	PER DAY	PER MILE
FALCON Sedan	6.00	+ 6c
FALCON Station Wagon	7.00	+ 7c
GALAXIE or FAIRLANE Any Sedan Model	7.00	+ 7c
FAIRLANE Station Wagon	7.50	+ 7½c
GALAXIE—Convertible or Station Wagon	8.00	+ 8c
THUNDERBIRD or MUSTANG Hardtop only	9.00	+ 9c
THUNDERBIRD or MUSTANG Convertible	10.00	+ 10c

*These rates are suggested for 24-hour rental periods or portions thereof. They include gas and oil 4¢ per gallon. You are responsible for any gas or oil you purchase during your trip. Purchase receipts are submitted. You are insured for all but the first \$100 of vehicle damage. Full coverage is \$1.00 per day additional. We will attempt to provide the exact type of car you request but we reserve the right to offer an alternate vehicle if necessary.



1101 MONTEREY STREET

543-6422

SPORTS ODDITY

The longest tied game in modern baseball history was played in Baltimore in 1936. That game, between the Chicago Red Sox and the old Brooklyn Dodgers, was called after 19 innings of play because of darkness. Final score was 3-3.

SPORTS

New paper story account 15 per cent from "Business" category. 62 per cent from "Associated Press" and 10 per cent from "United Press International."

Pay boost for profs

California State-College personnel in academic and closely related positions were granted a salary boost of 10 per cent by the colleges' Board of Trustees during its recent meeting in San Francisco.

The \$7.4 million increase had been authorized by the last session of the California Legislature and is retroactive to July 1, 1965. It affects some 7,000 members of the CSC's faculties.

The board noted that it had announced its intent to grant the increase as early as July 22, but that cost estimates and certi-

fication of the availability of funds from the Department of Finance had required extra time.

The board also asked Chancellor Glen S. Dunke to continue to gather data to demonstrate further the salary needs of the state colleges. For academic administrators the trustees asked a five per cent raise, effective January 1, to compensate for their failure to receive equitable adjustment on July 1, 1965.

In other action the board allocated \$42,000 for working drawings for a women's gymnasium at Cal Poly. The trustees also approved schematic plans for a \$2.8

million college union building, a \$2.4 million student housing complex, and a \$1.5 million engineering-mathematics classroom building.

Authority was delegated to the chancellor to fix student body membership fees and establish rental rates for on campus student housing.

Tuition Comparisons

During the past four years average tuition costs at U.S. private colleges went up \$200 while tuition costs in public colleges increased just \$40.

Student actions put question on CU films future

Student conduct during the showing of the College Union-sponsored films has put in question the future of such films.

In a report presented to the Student Affairs Council last Tuesday night by graduate manager Robert Spink, note was made that in addition to the noise problem actual damage to the Little Theatre itself has been done while the films were being shown. Spink recommended that SAC look into the matter and take necessary action. If the damage can't be stopped Spink warned that the alternatives would be to change the showing location, hire someone to police the area, or cancel the films all together.

Board of Publications chairman Tom Connell urged that the CU Films Committee employ some ushers as a means of control. In supporting Spink's call for action, John Thelland, one of three Applied Arts Council representatives, said that "showing a little force" at this time might bring an end to the destruction.

The problem has been considered by the Films Committee this past week and a report to SAC is expected tonight on what kind of action should be taken.

Peace Corps Record

Stanford University has contributed more Peace Corps volunteers per capita than any other institution of higher education.

SHIRTS HATS PANTS BOOTS for men and women

Your western store keeping up with new and better western fashion needs.

Western wear you're proud to wear. All the gear for you and your horse at the parade ranch, arena, and dance.



AAA Western Wear

Open Till
9:00 Thurs. Night

Sally and Bud Walters
785 Marsh
543-0707 San Luis Obispo

WE HAVE THE BIG LEGGED WRANGLERS BACK!

Purity Store

College Square

Shopping Center

896 Foothill

OPEN
6 days

Low Everyday
Prices & Blue
Chip Stamps

CLOSED SUNDAYS

9 a.m. - 9 p.m. (Mon. - Fri.) Saturday: 9 a.m. - 8 p.m.

ZIP-GO

With the Leader ...

The Newest Code in Fashion Intigue
is NOW at KINNEY'S.

See our "FASHION SQUARE" showing the latest
in fast back styling at Kinney's.

SPECIAL OFFER

Through Oct. 16, 1965

DISCOUNT

with this coupon and ASI card
toward purchase at Kinney's, College Square.

Weekdays till 9:00

Sundays 11:00-5:00

College Square Shopping Center, San Luis Obispo

Thursday Night Entertainment Special - "ALL THOSE GUYS" - from 6 to 9:00 P.M.

Calling all musicians

The Cal Poly Little Symphony Orchestra, under the direction of Emanuel E. Helfetz, has begun practice with a fine nucleus of returning students. Helfetz reports, however, that 17 players were lost through graduation, and that other interested students are needed.

Interested students are urged to contact Helfetz in Room 121 in the Music Building.

Reserve officers invited

Students, staff or faculty who are officers in the Naval Reserve on the Marine Corps Reserve are invited to affiliate with the local Naval Reserve Officers' School.

The NROS meets on campus every Wednesday at 1930 in room 8c E-47. Further information regarding the NROS program may be obtained by contacting Commander Vance D. Lewis in Se. D-48 or by phone extension 2455.

THE NEW LOOK IN DIAMONDS



NEW MODERN STYLED WEDDING SETS

Priced as Low as \$50.00

Priced Far Below
Other Name Brand
DIAMONDS

WE WILL NOT BE UNDERSOLD

No Interest • No Carrying Charge
Pay As Little As 50c A Week

CLARENCE BROWN

San Luis Obispo's Leading Credit Jeweler Since 1934
862 HIGUERA ST. 453-5648



WIN
a new
Polaroid
Camera
from
LEVI'S

It's the "instant snapshot" camera you've always wanted!
Crystal-clear black-and-white photos ready for your album
in 10 seconds! Works indoors and out, rain or shine!

Not a contest! Nothing to buy!

REGISTER NOW ...

DRAWING WILL BE HELD SAT. OCT. 2, 5 P.M.

RILEYS
DEPARTMENT STORE

COLLEGE SQUARE SHOPPING CENTER • 543-1421

SPORTS

AT BENO'S

CONVERSE
"Chuck Taylor"

All-Star Oxfords

• Black
• White
• Sizes 3-13

\$8.95

We Give BLUE CHIP STAMPS

OFFICIAL GYM CLOTHING

- Sweet Shirts
- Gym Shorts
- Sweat Pants
- Gym T-Shirts
- Coveralls
- Athletic Socks
- Shop Coats
- Athletic Supporters

BENO'S

QUALITY CLOTHIERS...SINCE 1938

1019 Morra San Luis Obispo 543-9793



MUSTANG END MONTY CARTWRIGHT eludes a Linfield defender to snag a pass from quarterback Walt Raymond in last Saturday's 10-7 loss to the Wildcats. (Photo by Don Neel)

San Luis Travel

437 Marsh St.
543-4967

Ask About Our
Half Fare
For Young Travelers
Ages 12 Through 21

TINA HOPKINS **ROSALYN MERTZ**

WAA membership drive under way

The Women's Athletic Association membership drive is in full swing. After each Physical Education class in Crandall Gym this past week, activity calendars were given to all the girls. Our new advisor, Mrs. Van Slyke, is extremely interested in WAA and its success.

Doreen Williams and Chris Adams are our Intramural Volleyball directors. Both report that the first volleyball meeting will be held September 28th or 30th. All clubs and dorms, as well as independents on or off campus are invited to join.

in Person!

THE AMBASSADOR of JAZZ

LOUIS ARMSTRONG

WEDNESDAY
SEPT. 29, 1965

ALL THE SUPPLIES YOU NEED AT THE FAIREST POSSIBLE PRICE

Remember:

- ★ Save your cash register receipts
- ★ Buy your books early

El Corral Book Store

Poly harriers win third in L. B. meet

"The boys did real well considering this was their first meet of the season."

This was the comment of Coach Richard Purcell after his cross-country team's third place finish in the Long Beach Invitational at Saturday.

The meet had ten teams entered in the small college division, including the Mustangs. Cal Poly finished behind the University of California at Santa Barbara with 30 points, and Cal Poly Pomona with 87 points. The Mustangs ended up with 96 points. Low score wins in cross country.

The majority of the team are freshmen, and this was their first taste of varsity competition. Of the other teams entered in the invitational had, at least, one set previous to the Long Beach event, but this was the first set for Cal Poly.

Placing for the Mustangs were: Larry DeGroot 10th, Jeff James 11th, Frank Purcell 18th, Dennis Jones 23rd, and Mike McHenry 24th.

"We are not out to set the world on fire, commented Coach Purcell, "so we are not going to rush things this season. It is a young team, and almost all members will be back for at least two more years."

He continued, "The one big thing that will hurt us this season is the lack of experience. So we have only a few minor injuries, so if we can stay this way, we should be in pretty good shape."

Junior College Growth

California's junior colleges are expected to enroll 800,000 students in 10 years compared to 60,000 today.

Poly falls 10-7

by GEORGE RAMOS

Two 15-yard clipping penalties against Cal Poly in the second half proved to be very costly as Linfield College of McMinnville, Oregon, eked out a 10-7 victory over the Mustangs last Saturday at Mustang Stadium.

Behind 10-7 with about two minutes left in the game, a ten yard run by fullback Steve Arnold to Linfield's 36 was nullified by the fifteen yard infraction, which practically killed a scoring drive.

In another situation, Linfield retained ball possession after punting out of the end zone because of a clipping violation. Poly would've had a first down on the Wildcat 45 with about six minutes left in the game, but instead, Linfield had a first down on their own 25.

Overall, Cal Poly had 87 yards amassed against them for various penalties.

Other than the costly penalties, Cal Poly made a valiant comeback in the second half after falling quickly behind in the first quarter to Linfield.

In the quarter, Jim Kulbi kicked a nine yard field goal with 8:05 remaining in the period to jump out to a 3-0 lead.

Later in the stanza, the Mustang offense stalled and punted on a fourth down situation to the Linfield 23. On a second and six play from the 36, Linfield quarterback Mike Barrow teamed up with end Gary Crabbaugh for a 47 yard pass and run play down to the Poly 15. Two plays later, Barrow hit Ray Taylor in the end zone with a 10 yard aerial for the score.

Kulbi converted the extra point and put Linfield ahead 10-0 with 35 seconds left in the first period.

In the second half, the tables were turned. Cal Poly looked like a completely different ball club. They took the opening second half

kickoff and marched 66 yards in 17 plays with workhorse fullback Steve Arnold punching in the last two yards over left guard for the touchdown.

Larry McCurry kicked the PAT (point after touchdown) and cut the Wildcat margin to 10-7.

During that half, Poly's defense, which gave up 234 yards total offense to Linfield in the first half, stymied the Wildcat scoring machine and limited them to a meager 17 yards total offense.

In scoring ten quick points and dominating play in the half, the Wildcats had tremendous success running-wise with halfback Odie Avritt and Leroy Fralls going inside tackle and sweeping to the outside.

For Cal Poly, fullback Steve

Arnold did another outstanding job for varsity mentor Sheldon Harden plowing through the middle of the Wildcat line for considerable yardage.

QB Walt Raymond fared pretty well; completing 7 of 11 passing attempts for 74 yards.

Statistically, the first half killed the Mustangs. Linfield had 13 first downs to Poly's 4. They out rushed Poly, 134-63. They ran

off 52 offensive plays compared to 15 for Cal Poly. In the 17-0 win over Pacific Lutheran College, they had 65 offensive plays for the entire game.

It was certainly an exciting ball game, with Cal Poly making a game comeback after Linfield had threatened to run off and hide the game away.

But last Saturday night, they beat themselves.

WELCOME-BACK
POLY

Carl KIRK EBY
MENS WEAR

We Don't Sell . . . You Buy

San Luis Obispo
851 Higuera St.

AVAILABLE OCTOBER 1

1 Bdrm. Furnished Apt.
Adjoining Cal Poly
1237 Monte Vista
Phone 543-1321

Joy Says . . .

Welcome Back to Cal Poly.
Let us be of help whenever possible.

professionally
drycleaned
and
processed
with
STS

It's our exclusive
process that puts
"spring" back into
their "store-win-
down" color, shape
and feel. "New"
clothes everytime
you get them
cleaned at

MISSION LAUNDRY
and CLEANERS
331 Pacific

College Cleaners
890 Foothill in the
College Square Shopping
Center

What time is it?

For the correct time
all the time
Drop into Don Andrews
Jewelry shop.

Authorized S. P. Watch Inspector

Diamonds, silverware, jewelry.
Gifts for all occasions
Watches for men and women

Don Andrews
Jewelry

1009 Higuera St.
LI 3-4543

IMPORTANT NOTICE FOR ALL STUDENTS

STUDENT HEALTH INSURANCE NOW AVAILABLE

FERGUS & ASSOC.

Specialists in Student Insurance

YOUR GROUP ACCIDENT AND HEALTH INSURANCE PLAN IS
AGAIN OPEN FOR ENROLLMENT

FULL YEAR COVERAGE

DEPENDANT COVERAGE
ALSO AVAILABLE

only \$21⁴⁰

DEADLINE DATE: October 25-For Fall

Application Blanks, Brochures
Available At Your
STUDENT HEALTH SERVICE

Applications taken at
Associated Student Office

Eligibility—Students with 7 or more units.

Social Security aids many college students

Recent 1965 amendments to the Social Security Act have extended the age limit for young people's benefits from age 18 to 22.

These amendments apply to all unmarried full-time students with at least one parent who is retired, disabled or deceased. All such students now receiving benefits may continue to do so after the age of 18.

If a student was 18 at the time of a parent's death, retirement or disability, the student may now be eligible for social security benefits if he is now under 22. Any benefits stopped at the age of 18 may now be received if the student is under 22, unmarried and a full-time student.

A full-time student is an individual enrolled in a day or evening school for a course of study which will take at least three months with a subject load sufficient to complete the course in the time normally required.

An individual is not a full-time student if he is not active in attendance at school, is being paid by an employer while in school or course of study not included under this provision of the law.

The types of schools included are high schools supported or operated by state or local governments or by the federal government, vocational schools operated or supported by a local, state or the federal government, state universities and colleges and community colleges. Others included are private schools or colleges accredited by a state or national accrediting agency, and unaccredited private schools or colleges provided that at least three accredited schools or colleges accept their credits on transfer.

Courses of study not acceptable are part-time courses, some night school courses and unaccredited schools whose credits are not accepted on transfer by at least three accredited schools.

If a student is returning to school full-time in the fall, benefits may be continued into the summer or during any similar between-term period of 4 months or less. A student who works during vacation, or at any other time, and earns more than \$1,500 in a year, will not receive all benefits for any month in which he earns more than \$125.

Any student under 18 now receiving social security benefits will automatically continue to receive benefits until he leaves school, becomes 22, or gets married, whichever occurs first.

The Social Security Administration will want to know if a person is a full-time student when he becomes 18. For any student 18 or over, these benefits are not automatic. The student or a parent must apply for them. If the benefits stopped when a student reached 18, he need only re-apply and show that he is a full-time student. If social security benefits were never

received, but a student is now eligible for them, he should apply at the social security office.

These benefits are retroactive to January, 1965, so a full-time student who reached 22 after January, 1965, may now receive payments for the months before he became 22.

For further information on these changes, check with the nearest social security office.

SAC minutes

Students wishing to receive minutes of Student Affairs Council meetings should leave their name and Poly post office box number with student body secretary Jim Priceo in the ASI Office, Box No. 3.

LARGEST CLUB

The Poly AIA chapter is the largest club on campus with 435 members.

In stock

ELECTRONIC SUPPLIES

TV - RADIO - STEREO - HI-FI - KITS - PARTS

Wholesale Prices
Open to the Public

FAMOUS BRAND NAMES

• ASTATIC
• FINCO
• CENTRALAB
• MALLORY
• BOGAN

• BILDEN
• STANCOR
• RAY-O-VAC
• SWITCHCRAFT
• GARRARD

• MILLER
• SYLVANIA
• KRAUSTER
• SHURE
• ELECTRO-VOCIE

• WINEGARD
• BICO
• JERROLD
• ERIC
• XCELITE

BANKAMERICA CARD

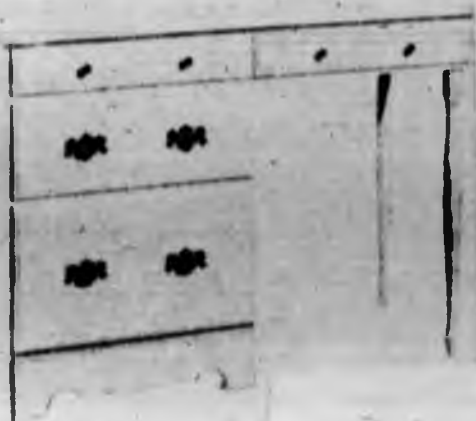
MID STATE

Electronic Supply Inc.

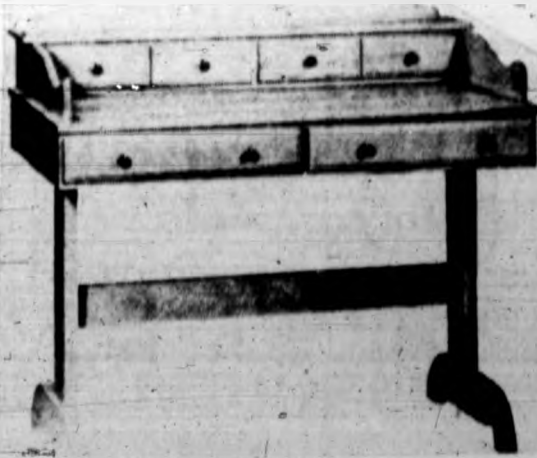
543-2770

1441 MONTEREY

SAN LUIS OBISPO



Here are two interesting styles of desks. These represent only two of the hundreds of items we can supply in the ready-to-finish furniture that can help make your school year more enjoyable. Stop in and look over our lines as well as your needs in finishing materials and paints.



GLIDDEN PAINT CENTER

894 Foothill Blvd.

College Square Shopping Center

Typewriter Rentals

Typewriter Repair

Hills Stationery Store

— in our 65th year —

1127 CHORRO ST.

SAN LUIS OBISPO

— dial 543-1950 —

Engineering Supplies

Stationery & Gifts




CHEVROLET

Sales & Service

Your Chevrolet deserves the best! It costs no more to trust your car to the expert, qualified servicemen of Mel Smith Chevrolet. You'll receive fast courteous service, too!

STANDARD and UNION
Credit Cards Accepted
"Your COMPLETE Satisfaction
Is Our Business—Always"

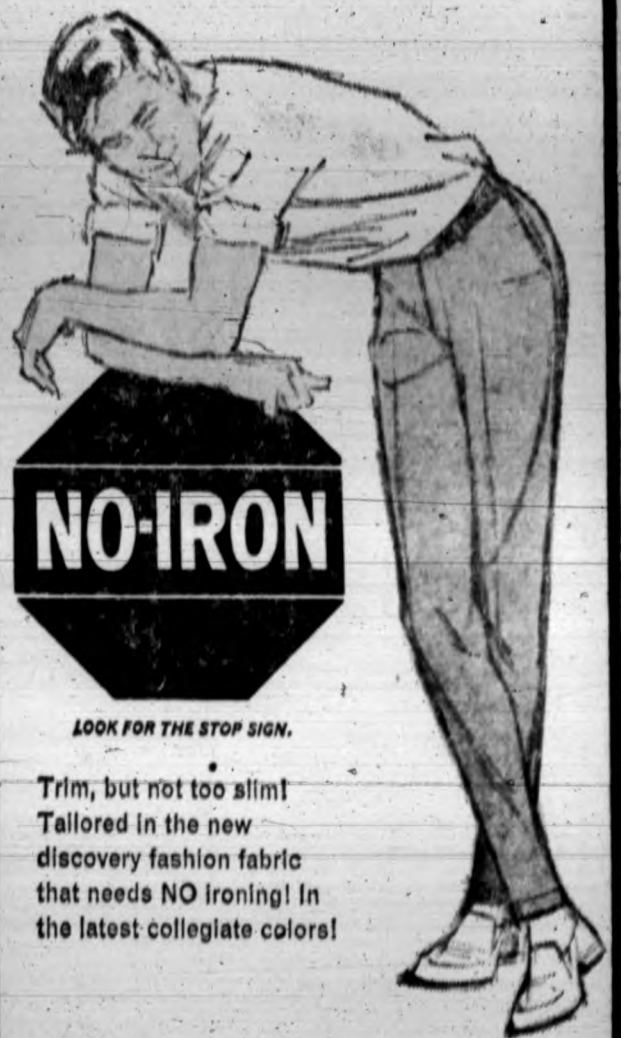
Mel Smith Chevrolet

1039 Monterey—San Luis Obispo—543-3221
OPEN 8 A. M. TO 8 P. M.




**AUTHENTIC IVY SLACKS
GUARANTEED TO NEVER
NEED IRONING!**

A-1 Tapers.



LOOK FOR THE STOP SIGN.

Trim, but not too slim!
Tailored in the new
discovery fashion fabric
that needs NO Ironing! In
the latest collegiate colors!

College Hi Shop

YOUNG MEN'S FASHIONS

Uptown San Luis Obispo

544-287

787 Higuera St.

Health fee deadline

Each quarter the college sets a deadline for the purchase of Optional Health Fees. This Fall Quarter the date will be 5 p.m. October 17.

Until the deadline this Fall, students will be able to purchase an annual covering all three quarters for \$16. The regular fee paid by the quarter is \$6.

Students are urged to protect themselves with health coverage. Every quarter there are a significant number of students who do not obtain coverage and who become ill or injured, and treatment costs many times the \$16 annual fee.

Fees can be paid to the cashier in the Administration Building.