

### Ethnic studies scholar interviews scheduled

Two candidates for the position of visiting scholar for ethnic studies, to begin winter quarter, will be on campus. Dr. Admasu Zike, director of the Center for Black Studies at Northern Illinois University and Dr. Federico Sanchez, chairman of Mexican American Studies at CSU Long Beach.

Drs. Zike and Sanchez will be interviewed by Vice President for Academic Affairs Robert Koob, Dean of Liberal Arts Sidney Ribeau, and the Ethnic Studies Selection Committee. They will also give class presentations.

An open forum will be held for students, staff, and faculty. Dr. Zike's open forum will be today (Nov. 8) from 11 am-noon in Science A-4. Dr. Sanchez' open forum will be Tuesday, Nov. 13, from 11 am-noon in Fisher Science 287. All interested persons are encouraged to participate in the open forum.

### Brann Litton president

Alton J. Brann, senior vice president and group executive at Litton Industries, has been named president and chief operating officer of the Beverly Hills-based electronics company. Brann is a member of the School of Engineering Advisory Board, and he was chairman of the school's successful Benchmark for Excellence in Undergraduate Engineering Education capital campaign.

### Captains selected

More than 100 captains have agreed to contact faculty and staff in their employment areas as part

of the 1990 United Way/Neighbors Helping Neighbors fund drive. The campaign will run through Nov. 16.

Captains will provide each employee with a brochure on the United California State Employees Campaign and a San Luis Obispo County Area Agency Directory listing the local recipients of funds. Donors may also designate contributions to any non-profit organization of their choice, even if the organization is not listed in the directory. Last year Cal Poly employees contributed almost \$63,000 to various nonprofit, youth and service agencies.

### Oscar Reece

Information has been received on campus regarding the recent death of Oscar Reece, 86, who was on the crop science department faculty from 1956 until his retirement in 1973. He died Oct. 17 in Walnut Creek.

Reece earned two degrees at Kansas State College and completed his doctorate at the University of Minnesota. Before joining the Cal Poly faculty, he was a research fellow at Minnesota and a professor at Iowa State Teachers College.

Contributions should be sent to university development services in his name.

### CPR holiday schedule

Two additional issues of *Cal Poly Report* will be printed in November (Nov. 15 and 29). There will be no issue the week of Thanksgiving.

In December, *Cal Poly Report* will appear Dec. 6. The first issue of winter quarter will be Jan. 3.

### Library will offer UnCover workshop

The Kennedy Library will offer a workshop to acquaint the campus community with the UnCover online periodical database.

The workshop will take place in Kennedy Library 202 on Wednesday, Nov. 14, from 11 am-noon. No pre-registration is required.

Now including over one million articles from 10,000 journals, UnCover offers researchers keyword, author, and title access. Many articles contain brief summaries and Cal Poly's call number. Access is available through terminals in the library's reference department or remotely through SLONET.

UnCover is a product of the Colorado Alliance of Research Libraries. For further information, contact Paul Adalian (ext. 2649) or Ilene Rockman (ext. 2273) in the library.

### New student diversity topic of Nov. 14 panel

On Wednesday, Nov. 14, the Student Affairs Staff Development Committee presents the third in its "Colors, Cultures, and Concerns" programs for 1990-91, titled "Cal Poly's New Students!"

From 10:30 am through noon in UU 220, a panel of Cal Poly's new students that reflect the diversity of California's college population of the '90s and beyond, will discuss the concerns and issues they experience here and what they feel is being done or needs to be done to address them.

Chairing the panel and interacting with the audience will be the coordinator of the new Cal Poly Center for Women and Ethnic Issues, Dr. Willi Coleman.



## **2 comedies to open '90-'91 drama season**

"Ionesco Tonight" will feature "The Bald Soprano" and "The Lesson," two absurd short plays by Eugene Ionesco. They will open the theatre and dance department's 1990-91 drama season on Thursday, Nov. 15, at 8 pm in the Theatre.

Subsequent performances will be at 8 pm on Friday and Saturday, Nov. 16 and 17.

The sorry state of human communication is the subject of "The Bald Soprano."

"The Lesson" concerns an aging professor who takes a rather obtuse young girl through a variety of subjects. As the student becomes less and less able to follow his teachings, the professor's anger mounts.

Directing "Ionesco Tonight" is theatre and dance faculty member Al Schnupp. Designing the set and costumes is Russ Whaley, with Howard Gee as lighting and sound designer and technical director. Whaley and Gee are also on the department's staff.

Tickets for the performances are \$6 for adults and \$5 for students, Cal Poly employees, and senior citizens. Reservations can be made by calling the Theatre Ticket Office, ext. 1421, between 10 am and 4 pm on weekdays.

## **Bandfest '90 planned in Chumash Nov. 17**

Bandfest '90 is scheduled for 8 pm on Saturday, Nov. 17, in Chumash Auditorium. The Mustang Marching Band, the Cal Poly Symphonic Band, and the Dixieland Band will be featured.

William V. Johnson of the music faculty will wield the baton. Bandfest '90 is the only time during the year when the various elements of the Cal Poly band program appear together.

General admission tickets will be \$6.75 for adults and \$4 for students

and golden agers. They are available at the UU Ticket Office, the Theatre Ticket Office, and from members of the bands.

Tickets can be ordered by telephoning ext. 1281 or ext. 5792. Tickets ordered by phone may be picked up immediately prior to the performance at the UU Ticket Office.

Season tickets for band performances are available at a 20 percent discount over the single concert price. The bands' 1990-91 concert season will include the Nov. 17 program; the annual Pops Concert (Feb. 9 and 10); and the Spring Concert (May 18).

Bandfest '90 is sponsored by the School of Liberal Arts and music department.

## **Crime avoidance**

Due to the popularity of the "Violent Crime Avoidance and Response" class held in October, another personal safety presentation, sponsored by the public safety department, will be offered on Tuesday, Nov. 13, at 6:30 pm in Cottage No. 3 at the south end of the campus. The class is limited to 35. For reservations, call Ray Berrett or Mike Kennedy, ext. 2281.

## **Freezer packs of beef, lamb, pork**

Is your freezer empty? Are you tired of the same old thing for dinner? Why not take advantage of Cal Poly Meats freezer packs of beef, lamb, and pork. The food science program has a long-standing tradition of producing and processing superior meat products. The meat lab sells directly to you and has competitive prices. Small and large quantities are available with prior notification. Call Bob Delmore, ext. 2114, to place an order.

## **Fall quarter 1990 enrollment 17,759**

Fall quarter 1990 enrollment at Cal Poly is 17,759, an increase of a little over one percent compared with the fall quarter enrollment of 17,567 students in 1989.

Although new student admissions for this fall were cut by 20 percent compared with last year's figures, returning students from previous years make up a larger share of the total campus population.

Historically, fall quarter enrollment is the university's highest, with declines in winter and spring quarters.

In winter 1990, 617 new students were accepted, and the winter '91 targeted enrollment has been cut to 193 new students. For spring '90, 364 new students were accepted, and in spring '91, 109 new students will enter Cal Poly.

New student enrollment for the current year will be 3,818, a drop of 1,561 from 1989-90.

Cal Poly enrollment targets are based on budgeted enrollments allocated by the California State University chancellor's office. Since there are part-time, in addition to full-time, students on campus, the average number of units taken per student is less than 15.

Because the budget allocation is for full-time equivalent students, the university is obligated to enroll more students to reach the full-time equivalent figure.

No increase in budgeted enrollment is allowed under the current master plan for Cal Poly. The university will begin the planning process this year for a master plan revision and an environmental impact report designed to accommodate a target of 17,400 FTE students by the year 2004.

Since the total number of students is based on predictions resulting from statistical models, variations in these numbers are expected from year to year.



### 1991-92 student fees, CSU budget approved

A \$1.94 billion budget request and a 3% increase in student fees for the 1991-92 year were approved by The California State University board of trustees committee on finance.

Acting for the full board, the committee approved sending the budget to the state Department of Finance, the first step in the 1991-92 state budget process.

The \$1.94 billion request represents a 13.7% increase over CSU's 1990-91 final \$1.7 billion support budget.

The budget calls for restoration of part of the \$99 million cut from the CSU budget last year.

This past year's budget was not finalized until July 31, when the governor signed the state budget after months of wrangling with a \$3.6 billion deficit. That experience, coupled with the state's current bleak financial picture, has led CSU budget officials to alert trustees that this year could be the same, or worse.

The 1991-92 budget is predicated on enrollment growth of 4,520 full-time students. That growth requires 431 new positions to serve students at CSU's 20 campuses.

In summary, the budget calls for a 5.2% increase in baseline adjustments (personnel, bond repayments, price increases) of \$89.7 million. It asks for a \$112.7 million, or 6.6%, increase in program costs (enrollment growth, academic support, student services, instruction and restoration of \$36 million in cuts from 1990-91). And it calls for a \$30.5 million, or 1.79%, increase in program changes (recruiting and retaining faculty, academic quality issues, environmental concerns and the Educational Opportunity Program).

In a related matter, trustees agreed to raise the State University Fee by 3% for 1991-92 to \$804 per year for a full-time student. Part-time students will pay \$462 per year.

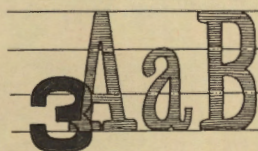
Currently, the full-time yearly

fee is \$780 and the part-time fee is \$450. Out-of-state and foreign student tuition will remain at the current level: \$6,170 per year.

State legislation allows the fees to rise a maximum of 10% per year in an emergency, a level that could be reached by the end of negotiations on the state budget.

### Material in reserve

The reserve room in the Kennedy Library is accepting material to be placed on reserve for winter quarter. Lists and materials must be submitted at least two weeks before the quarter begins to allow sufficient processing time. Requests will be processed in the order received. Call ext. 2415 for forms and information or stop by the reserve desk.



### Scholastic aptitude test will be revised

The College Board has made changes in the Scholastic Aptitude Test that attempt to make it a broader measure of students' analytical abilities.

The new test, scheduled for 1994, will introduce:

- Open-ended questions without multiple answer choices in the mathematics section;

- Longer reading passages and more questions that strive to measure comprehension of themes, rather than facts, in reading; and

- The use of calculators for the first time in the mathematics section.

The SAT will also be renamed the Scholastic Assessment Test. The new test will have the same 200-800 scale for each of its verbal and mathematical sections.

### Faculty invited to march Dec. 8

Cal Poly faculty are invited to march with their schools in Fall Commencement, Saturday, Dec. 8. Faculty marching should be in the assembly area at Mott Gym, in appropriate academic regalia, by 9 am for the Schools of Architecture and Environmental Design, Business, Liberal Arts, and Professional Studies; by 1:30 pm for the Schools of Agriculture, Engineering, and Science and Mathematics. Those marching do not need a ticket for admission to the gym. However, faculty who march are eligible to receive one guest ticket. Faculty should notify their school dean's office of their intent to participate and request a guest ticket, if needed. Tickets will be available in the dean's office beginning Monday, Dec. 3.

### Veteran's Day food service hours

#### Friday, Nov. 9

Regular schedule, except VG Cafe will be closed. Snak Stop will close at 3 pm. Julian's and Backstage will close at 5 pm. The University Dining Room will remain open until 7:30 pm.

#### Saturday, Nov. 10

University Dining Room  
Breakfast ..... 10 am - Noon  
Lunch ..... Noon - 2 pm  
Dinner ..... 4:30 pm - 7:30 pm  
VG Restaurant ..... 11 am - 8 pm  
Julian's ..... 10 am - 2 pm  
Campus Store ..... 9 am - 5 pm

#### Sunday, Nov. 11

University Dining Room  
Brunch ..... 10 am - 2 pm  
Dinner ..... 4:30 pm - 7:30 pm  
VG Restaurant ..... 9 am - 8 pm  
Campus Store ..... 9 am - 5 pm

#### Monday, Nov. 12

University Dining Room  
Breakfast ..... 10 am - Noon  
Lunch ..... Noon - 2 pm  
Dinner ..... 4:30 pm - 7:30 pm  
VG Restaurant ..... 11 am - 8 pm  
Campus Store ..... 9 am - 10 pm



### Dateline. . .

(S) - Admission Charged

#### THURSDAY, NOVEMBER 8

**Speaker:** Wendy Rose (Native American poet) will talk as part of the Arts and Humanities Lecture Series. UU 220, 11 am.

#### FRIDAY, NOVEMBER 9

**Poetry Reading:** W.S. Merwin will read from his works as part of the WriterSpeaker series. Sandwich Plant, 7 pm.

**Wrestling:** Green & Gold Tournament, Mott Gym, 7 pm. (S)

#### SATURDAY, NOVEMBER 10

**Wrestling:** Community College Tournament, Mott Gym, 9:30 am. (S)

**Football:** Millersville University, Stadium, 1 pm. (S)

#### MONDAY, NOVEMBER 12

**Veteran's Day:** University holiday for faculty and staff.

**Film:** "Barrier," Chumash, 7:30 pm. (S)

#### THURSDAY, NOVEMBER 15

**University Club:** Joan Cirone (Health Center) and Pat Hosegood-Martin (Foundation) will do a presentation on wellness in the workplace. Staff Dining Room, noon.

**Play:** "Ionesco Tonight." Continues Friday and Saturday, Nov. 16 and 17, Theatre, 8 pm. (S)

#### FRIDAY, NOVEMBER 16

**Women's Basketball:** Cal Poly Classic: Hayward vs. Stanislaus, 6 pm; Cal State Bakersfield vs. Cal Poly, 8 pm, Mott Gym. (S)

#### SATURDAY, NOVEMBER 17

**Rodeo:** Fall Rodeo, Rodeo Arena, 1 & 4:30 pm. Continues on Sunday, Nov. 18, 1 pm. (S)

**Women's Basketball:** Cal Poly Classic: Consolation Game, 5; Championship game, 7 pm, Mott Gym. (S)

**Concert:** Bandfest '90, Chumash, 8 pm.

#### MONDAY, NOVEMBER 19

**Film:** "Montenegro," Chumash, 7:30 pm. (S)

### Position Vacancies

Vacant staff positions at Cal Poly and the Cal Poly Foundation are announced in this column and are posted outside the respective offices. Contact those offices (State: Adm. 110, 805-756-2236 — Foundation Administration Building, 805-756-1121)

for applications and additional position details. Both Cal Poly and the Foundation are subject to all laws governing affirmative action and equal employment opportunity. Cal Poly hires only individuals lawfully authorized to work in the United States. All eligible and interested persons are encouraged to apply. Applications must be received by 5 pm or postmarked by the closing date.

#### State

##### CLOSING DATE: Nov. 21, 1990

**Clerical Assistant II**, \$805.50-\$950/month; half-time, 8:30 am-12:30 pm, Public Safety.

**Clerical Assistant II**, \$1,208.25-\$1,425/month; 3/4-time, Student Academic Services.

**Clerical Assistant II**, \$1,611-\$1,900/month; temp. through 6/30/91 w/possible permanency, University Outreach Services/Campus Student Relations.

**Custodian**, \$1,561-\$1,842/month; 3 am-11:30 am, M-F, Plant Operations.

##### CLOSING DATE: Feb. 13, 1991

**Administrator II - Director of Admissions**, salary commensurate with experience, Enrollment Support Services.

#### Foundation

##### CLOSING DATE: Nov. 16, 1990

**Assistant Cook**, \$6.59/hour, starting with increases to \$8.01/hour based on merit, campus dining.

**Maintenance/Custodian Lead**, \$1577-\$1917/month. Hours: 6 am-3pm.

**Publications Coordinator**, \$9.47-\$11.50/hour, half-time, university relations.

**Retail Clerk**, \$7.48-\$9.24/hour, 24 hour/week, Bookstore.

##### CLOSING DATE: Nov. 27

**Pastry Chef/Baker**, \$9.76-\$11.86/hour, full-time, twelve month position, campus dining.

\* \* \* \* \*

Candidates for positions on the faculty of the university are presently being sought, according to Jan Pieper, director of personnel and employee relations. Those interested in learning more about the positions are invited to contact the appropriate dean or department head. Salaries for faculty commensurate with qualifications and experience (and time base where applicable), unless otherwise stated. This university is subject to all laws governing Affirmative Action and equal employment opportunity

including but not limited to Executive Order 11246 and Title IX of the Education Amendments Act and the Rehabilitation Act of 1973. Cal Poly hires only individuals lawfully authorized to work in the United States. All eligible and interested persons are encouraged to apply.

##### CLOSING DATE: Dec. 31, 1990

**Assistant Professor, Tenure Track**, foreign languages. Appointment to teach Spanish and Italian; principal duties and responsibilities include teaching all levels of Spanish language, South American culture and literature, lower division Italian language, and Spanish for students of agriculture. Near- or native-level Spanish and Italian speaking ability required. Ph.D. in Spanish with specialization in contemporary South American literature required. Preference given to candidates with an advanced technical degree, university-level experience and high level of demonstrable teaching ability.

##### CLOSING DATE: Jan. 7, 1991

**Lecturer (full-time)**, social sciences. Spring quarter 1991 (April 1 to June 15, 1991) to teach global geography or a combination of human geography and global geography. Ph.D. desirable, but advanced ABD candidates may be considered, with successful teaching at college/university level preferred.

##### CLOSING DATE: Jan. 31, 1991

**Assistant/Associate Professor, Tenure Track**, biological sciences. Two positions, one to teach vertebrate developmental biology and one to teach invertebrate zoology/marine biology. Positions available starting with the 1991-92 academic year. Qualifications: Earned Ph.D. and evidence of a strong commitment to teaching and research.

##### CLOSING DATE: Feb. 1, 1991

**Department Head**, dairy science. 12-month position that carries a part-time (45%) teaching and student advisement assignment which is tenure track. Administrative responsibilities include overseeing two university dairies, a dairy processing plant and a dairy products technology center. Minimum qualifications are: a doctoral degree in dairy science or a closely related field; a demonstrated commitment to and involvement with practical dairy production and/or dairy processing; demonstrated administrative ability; successful university teaching experience.