

# HOMECOMING - 1961

## QUEEN STORY

Queen Cathy DeGasparis and her court express their feelings about Homecoming on page 4. They will make their official appearance at tonight's Homecoming ball.

Vol. XXIII No. 7

## El Estrella Mustang

### CALIFORNIA STATE POLYTECHNIC COLLEGE

SAN LUIS OBISPO, CALIFORNIA

## PARADE ROUTE

A diagram showing the Homecoming parade route is on page 2. The parade is scheduled to begin 8 o'clock from the Safeway parking lot.

Friday, Oct. 27, 1961



**HOMECOMING COURT** . . . The smiles of the queen and her court reflect the spirit of the Homecoming weekend. Queen Cathy DeGasparis and her court of Elaine Monson, Sue Patton, Gayle Schleder and

Linda Paine have varied activities planned for the weekend, including the Coronation Ball tonight, Homecoming parade tomorrow and half-time activities at the San Diego Marines-Cal Poly football game.

## Twenty-two Floats Entered In Parade

Highlighting the Homecoming parade this year are 22 floats supported by several bands and Cal Poly's ROTC and Penguins. Reflecting a Polynesian Holiday theme, the parade will start at 8 p.m. with floats in the following appearance:

**Blue Key**, national honor fraternity, the "Homecoming Queen's float." It depicts an island in a sea of blue, complete with palm trees, the Queen and her court.

A float showing Hukilan celebration on a background of an ocean, beach hut, mechanical waves and fish will be presented by the Agricultural Engineers.

**Air Conditioning Club's** entry will show a volcano, temple and a god surrounding a Polynesian offering.

"Poly's Holiday," featured by the Mechanical Engineers, will have a large erupting Mouth Sea Island volcano swallowing the San Diego mascot.

The Institute of Aero Space Melones will ride the breakers high on a surf board in "Ride High You Mustangs" float complete with a beach laden with palm trees.

"Julian's Luau" will rotate as the center of attention in a Mouth Sea setting, and lampooning a San Diego dummy.

A touch of home will be presented in "Poly's Place." The Industrial Engineering Club will

show a Mouth Sea setting with a uke player and hula dancer.

The lure of the Polynesian girl charms the surfboard-riding San Diego Marine to his destruction by the giant "Poly Wave" in the Ornamental Horticulture Club's "Polynesian Lure."

Kamehameha The Great will be the center of attention in the float of Alpha Phi Omega. A raised map

A short post-parade rally will be held this Saturday on the steps of the Court House on Monterey Street immediately following the Homecoming Parade, which begins at 8 P.M.

The band, cheer leaders, and song girls will be present to lead songs and yell for those participating in the traditional occasion.

Let's show some school spirit! Everyone is urged to attend and support the team this Saturday.

of Hawaii and three girls in Hawaiian costumes complete the picture.

Hewson House will show an original version of Paradise Lost in three stages—a raft, a man on an island paradise, capture by natives.

It's party time in the Polynesian Movement. Fremont Hall has a beach party going full swing next to a Polynesian hut.

Pineapple Princess, by Mat plea Pi, will feature a gigantic pineapple base with song girls.

"Take Me Back To My Little Grass Shack," the Los Lecheron

Dairy Club will show a wave carrying a surfboard rider back to his grass hut at the base of Hawaii's Diamondhead.

The Poultry Club will be in its element as a baby chick cracking out of its shell, fanned by two girls in "Birds in Paradise."

Eternal frustration will be depicted in the "Polynesian Vling" by the Farm Management Club. A sunken boat pulling two islands will show alluring women on one island and shipwrecked sailors on the other. The sailors are attempting to catapult one of their number to the other island.

The mighty Poly Mustang, erupting out of a fiery inferno, sends the San Diego Marine whimpering toward the sea in the American Institute of Architects' float "Mustangs at 8 O'Clock."

Bulls and Hears is having a O-a-h-u, a cow with a hula hoop. Deliberately thinking that the parade is the following day, the Crops Club will have a partially finished float.

"Lis Hons" will be Lambda Delta Sigma's theme for their car decorated with leaves and crepe paper.

The cheer leaders will ride in a car through the parade.

The Society of Automotive Engineers will have an old car in the parade.

"Drifting and Dreaming" will be Poly Phase's theme as a Cal Poly student sits at a desk and dreams of the island hut and two dancing girls behind him.

## Gala Festivities Welcome Return of Many Alumni

BY WAYNE COX, Staff Writer

"Tonight's Coronation Ball, tomorrow's Homecoming Parade, football game and mixer at the Madonna Inn wine cellar are only a few of the highlighted festivities open to returning alumni," Owen Servatius, Cal Poly Alumni association secretary-treasurer, announces.

A registration book for alumni under the direction of Alucalipoli has been set up in the lobby of the Administration building and will be open from 8:30 a.m. until 5:15 p.m., Saturday. Alumni who have not purchased tickets for the Homecoming activities can do so at registration. Game tickets are available at a reduced rate of \$2.

Honored guests attending tonight's alumni dinner at 8 p.m. in the Staff Dining room, are Alfred Miesel, class of 1907, alumnus-of-the-year; Cathy DeGasparis, Homecoming Queen, and her court; Dr. Dale Andrews, dean of the college; AHS President Lee Foreman and Homecoming Committee Chairman John Quinn; Cal Poly-Pomona Campus AHS President Larry Gilbert, Homecoming Committee Chairman Rich Eastman and Harry House, official Homecoming representative from the southern campus.

Carl G. Beck, Farm Management instructor, will be master of ceremonies.

Open house in all departments and tours of the campus will begin at 9:30 a.m. Saturday. Buses will take alumni to six points of interest on campus, encompassing all

major construction areas.

Agriculture Engineers and the Crops department will host a coffee period for their alumni. A barbecue for all returning Ornamental Horticulture alumni will be sponsored by that department. (Check the schedule of events for times and places of coffee periods and departmental barbecues.)

Throughout today and tomorrow, College Union is sponsoring an Art Exhibit at the temporary College Union building across from the Architectural Engineering department. Water colors, oil paintings, ceramics, portraits and some sculpture will be displayed from 9 a.m. until 10 p.m. Tired alumni will also have a chance to relax in the College Union lounge.

The 24-unit Homecoming parade, with 22 different departmental and organizational floats, will form at 10 o'clock Saturday morning at the Safeway parking lot downtown. The route of the travel will be down Johnson ave., to Figueroa thence to Broad, right turn to Monterey, and then left on Osos, passing the reviewing stand across from Hewson House on the County (Continued page 4)



## SCHEDULE OF EVENTS

## FRIDAY

9:30 p.m. Coronation Ball, Mens gym

## SATURDAY

8:30 a.m. to 6 p.m.—Alumni Registration—Adm. Bldg. lobby

9:00 a.m. to 5 p.m.—Student Art Exhibit—TCU

9:30 a.m.—Departmental open house—all departments

9:30 a.m.—Series of campus tours begin

10:00 a.m.—Judging of Homecoming Parade floats. Safeway parking lot—corner of Johnson and Marsh Sts.

12:00 noon—Informal Alumni luncheon—Downtown San Luis Obispo.

2:00 p.m.—Homecoming Parade—Downtown San Luis Obispo

6:00 p.m.—Alumni Dinner—Dining Hall

8:15 p.m.—Homecoming Football Game—Stadium

Immediately after the game—Dance—Men's Gym

Alumni Mixer—Madonna Inn (alumni only)

Free Tutoring in English  
Offered Foreign Students

Tutoring service for the foreign student has been made available by the instructors in the English department, their wives, citizens of the community and students. It will be offered everyday from 1-4 p.m. in the English lab, Eng. 318 B.

Also open 8-12 MWF and 8-11 TTh, the lab will provide valuable aid to foreign students in reading, writing and speaking.

## Vets Warned, Benefit Deadline

"Some Korean veterans under the Korean GI bill may have to start accelerating their courses in order to finish by the termination date of their GI training benefits," Howard E. Barlow of the San Luis Obispo Veterans' Administration office announces.

A veteran's GI training termination date is eight years from the date of his discharge, but in no event can he take GI training beyond January, 1965.

The Place To Go —  
For Brands You Know

Rowan's

STORE FOR MEN AND BOYS

782 Higuera Street

Look To Rowan's For Styling

MIDNIGHT 'TIL DAWN  
HALLOWEEN

SPOOK-A-RAMA  
Saturday, Oct. 28th  
at the  
FOX FREMONT



4 BIG HORROR HITS! ALL SEATS \$1.00



HORROR HIT NO. 2 — BOX OFFICE CLOSURE



HORROR HIT NO. 3

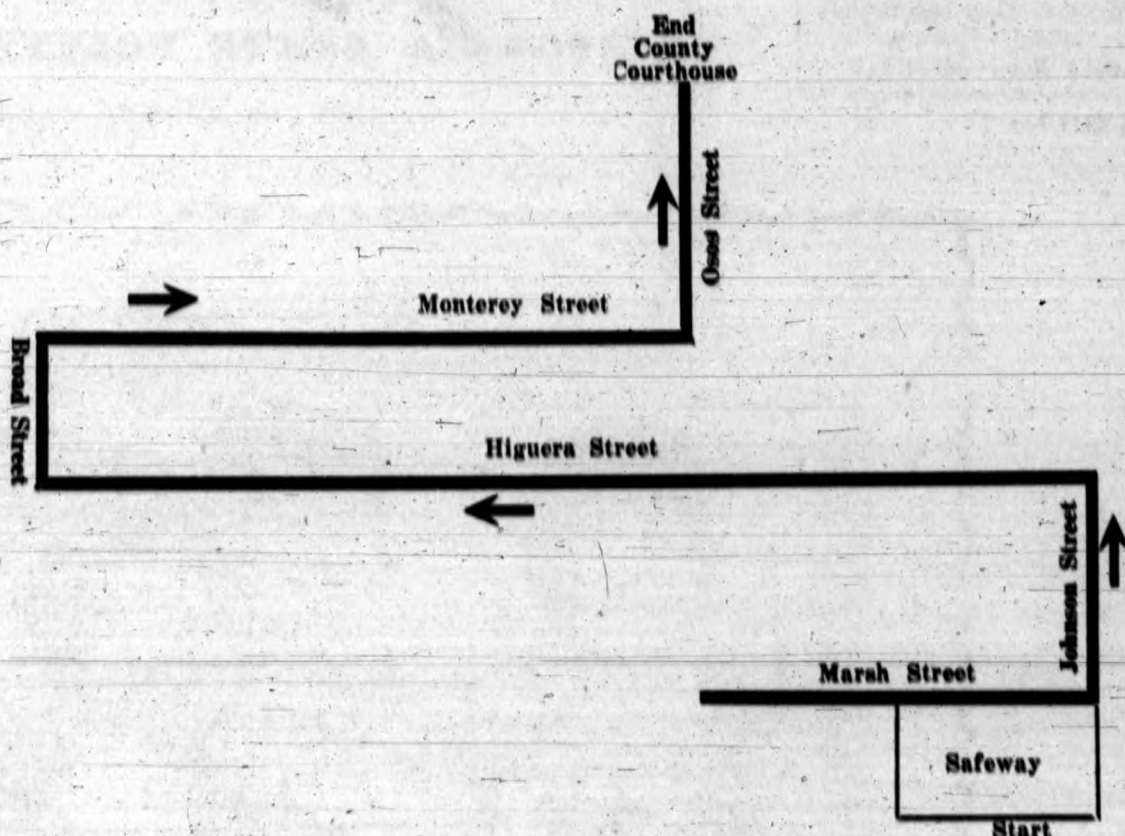


HORROR HIT NO. 4

THE CLASSIC OF HORROR FILMS!

King Kong

## PARADE ROUTE

Miossi Is Chosen  
Alumnus of Year

Alfred F. Miossi, a 1907 graduate of Cal Poly, has been selected by the Board of Directors of the Alumni Association as alumnus of the year. He and Mrs. Miossi will be honored guests at the 1961 Homecoming festivities this weekend.

Miossi entered Cal Poly in the fall of 1904, its second year of operation, and has since watched its growth for 57 years.

While in school Miossi specialized in mechanics. He played baseball and was an excellent high jumper.

After graduation he stayed at Poly as a repair and construction employee. After that he started a combined ranching and carpentry career, and at one time operated three ranches with his father and two brothers.

## QUEEN COMMITTEE

This year's Homecoming Queen chairman was Gary Chappell, assisted by co-chairman Mike Iverson and Jack Gilbert.

## El Mustang

California State Polytechnic College  
(San Luis Obispo Campus)

Bill Brown ..... Editor-in-Chief  
Kather Alexander ..... Associate Editor  
Pat Hall ..... Associate Editor  
Bill Rice ..... Sports Editor  
Barbara Inne ..... Club Editor  
Neil Norum ..... Photo Editor  
Dave Brown ..... Advertising Manager  
Mary Ann Crowe ..... Business Manager  
Ralph Hinde ..... Circulation Manager

STAFF: W. Cox, D. Darnum, D. Jones, E. Kingman, J. Melain, J. Mebane, J. Moore, J. Paisley, P. Powell, G. Sams, S. Stone, D. Van, C. Vothum.  
Production: J. Shop, D. Thom

Published twice-weekly during the regular school year except holidays and exam periods by the Associated Students, California State Polytechnic College, San Luis Obispo, California. Printed by students majoring in Printing, Division of Engineering. Opinions expressed in this paper in signed editorials and articles are the views of the writers and do not necessarily represent the opinions of the staff, views of the Associated Student body nor official opinions. Subscription price is \$5 per year in advance. Office: Rm. 21 Administration Building.

LEVI'S

at

We Don't Sell . . . You Buy

San Luis Obispo

851 Higuera St.

## GREENBROS

CLOTHING FOR MEN AND YOUNG MEN

Known for Good Clothing by  
Poly Students since the turn of the century

—We Stand Behind Our Merchandise—

Levis • Pendleton • Crosby Square

Lee Riders • Munsingwear

We Give S&amp;H Green Stamps

LI 3-0988

895 Higuera

BOOKS  
BOOKS  
BOOKS

For Everyone

Come In And Browse

## GABBY BOOK STORE

Higuera &amp; Garden San Luis Obispo LI3-9035

ARTHUR MURRAY

## Anniversary Special



We offer:

8 PRIVATE

LESSONS

8 GROUP

SESSIONS

Plus Arthur Murray's  
Dance Booklet

Total Tuition

only

\$35

ARTHUR MURRAY  
DANCE STUDIO

978 Higuera

San Luis Obispo

CALL LI 3-5200

STUDIO OPEN NOON TO 10 P.M.



## Student Affairs Council Report

## Dean Of College Explains College Union Movie Mixup

By JIM McLAIN, Staff Writer

In an effort to inform students of the situation that has arisen in regards to College Union movies, Dean of Students Everett Chandler told the Students Affairs Council Tuesday night that there is a disagreement between the college and a downtown theater. The group met in room 114 of the Library.

"The situation presents a tremendous public relations problem to the college," Chandler said. "The disagreement lies in the type of films we can see."

Chandler explained that when the college started its movie program in 1953 an agreement was reached with the downtown theaters that only "educational" films would be shown on campus.

"The films we had scheduled this year (as outlined in the college Union Social Schedule) could hardly be called educational," Chandler added.

He said that there had been no complaint by theater managers until last year when they apparently felt that the campus movie program was cutting into their business. "Recreational" movies have been shown on campus for a number of years.

Chandler mentioned that the use of state facilities, which was debated at length when the movies were first shown on campus, may enter into the dispute again. In this case, various facets of the movie industry and the state government would be involved.

"As the situation stands now," Chandler said, "we must submit a list of films we intend to show to the downtown theaters. This list which has not been prepared as yet, must meet with their approval. They decide whether or not our movies are competing with theirs."

George K. Maybee, senior class representative, reported that most pre-game and halftime ceremonies for the Mercy Bowl are set. During halftime, President Julian A. McPhee will be presented with a memorial plaque which will be placed at the parastyle of the Coliseum.

Maybee said that "flyers" (advertisements) for the event are available at the San Luis Obispo Chamber of Commerce office. He suggested that groups attach these to meeting notices in order to give the event more publicity. Maybee added that expected income from the game should total "around \$200,000."

Maybee also gave a financial report on the Memorial Fund. He said that the group had not received a Federal tax exemption, but has received one from the State. He added that the committee has distributed \$37,067.84 so far, and has \$36,845 left. Money is being distributed for medical expenses, scholarships, funerals, family maintenance and other needs of the victimized families.

"It is hoped that there will be money left to start a 'memorial

loan' scholarship fund to create a 'living memorial' to the victims of the crash," said Maybee.

Dean Chandler noted that presidents of all state colleges will be in attendance at the game, as well as large delegations of students from each college.

Dave Hettings, ASB vice president, said that the Constitution and Codes Committee met last week and is in the process of revising the Election Committee code. He said that various methods of voting—preferential, straight ballot and others—are being considered and presented to SAC.

ASB President Lee Forman appointed a committee to study foreign student orientation. It is hoped that the group will find ways to give students a better start at college. Derek Mills will be chairman of the committee.

Geornel Spain, College Union Board chairman, gave a report on all phases of College Union. Each committee's activities were discussed.

SAC voted to have Finance Committee issue a statement to freshmen and new students on why an admission charge is made for athletic events.

### Film Committee Needs Members

Various positions on the College Union Films Committee are now open, Steve Murdock, Personnel chairman, announced recently.

The position of chairman is open, as are various other positions on the committee. Qualifications for chairman include: at least a 2.0 grade point average, at least sophomore standing, Monday nights free to attend Program Board meetings, attendance at at least two Friday night movies per month, and reliability and responsibility.

The committee is responsible for obtaining ushers for movie showings, collecting and depositing donations, and selecting films to be shown.

Students interested in working on the committee are urged to put their name, box number and particular interest in the group in Box 11 in the ASB office by Friday, November 3.

A seat at the Mercy Bowl is waiting for you. Buy a ticket at the ASB office for \$3.

## Comment Corral

Contributions to "Comment Corral" should not exceed 200 words. Editors reserve the right to edit and or condense all letters received and to decline publishing letters that are in the opinion of the editor, in poor taste or libelous. All communications must be signed by the writer. If a name de plume is desired as a signature, it is permissible but the editor must know the true name of the author.

### No Participation

Editor:

It was my experience last Tuesday evening to sit in on an SAC meeting, and I was extremely overwhelmed at the lack of participation from the Council members regarding the business before them.

I don't know if their attitude is one of apathy or ignorance, but they had less to say about matters than did the visitors in the gallery. It is typical of the student body to know little about the workings of their student government, but I have never known it to be true of SAC members.

In previous years any proposal or matter of concern that was handled by the council received comments and questions from members, but this lack of interest from this year's council made me stop to wonder if they are doing the jobs they were elected to do.

Matters brought up by the ASB President should be questioned and investigated from the point of view of advantage to the group respective members are representing and advantage to the student body as a whole. Lack of discussion indicates lack of thought to me.

Mr. Editor, are the SAC members complacent? Are they perfectly satisfied with everything brought before them? More than two thirds of them seem to be—they don't say a word!

SAC is a powerful organ in this school; it is the heartbeat of the student body, but it looks like a few arteries are beginning to harden, and the students may be headed for a coronary thrombosis if their representatives continue to be close-mouthed about important issues.

An interested student Editor's note:

EL MUSTANG agrees, and anyone who disbelieves the above statement is urged to attend a SAC meeting in the future. Meetings are held every Tuesday at 7 p.m. in Lib. 114.

### L. F. T. Answers

Editor:

After reading "on the inside" in the October 24 issue of El Mustang, I feel that I should now make a statement as to the reason behind the stuffing of only about 900 mimeographed sheets in the issue of the October 20 El Mustang.

I was trying to wake up the student body to the sometimes not understood methods that are being practiced by the administration and faculty at Cal Poly. You only put a baby into a deeper sleep by rocking the cradle, you have to tip it over to awaken him. This could very easily apply to the student body. In many cases, students have been denied the right to write their senior projects in their own words, but are told that they will, put it in their advisor's words or not at all. This is especially applicable to Social Science majors.

You have asked me to prove the accusation that the administration

is suppressing students. You, as editor, should know this to be true more than anyone. If memory serves me correctly, last year, in the spring quarter, you dug up a interesting and possibly exposing story on El Corral, the student bookstore and coffee shop. What ever happened to it? It never appeared in print. You printed a story about a faculty investigation committee of El Corral, this quarter, but there has been no follow-up on that article yet. What happened to them? The same thing that happened to you, last year?

As for El Mustang always printing stories based on fact, there is still room for doubt on some that I have read.

AN L.F.T.

Editors note:

You stated in your mimeographed sheet that EL MUSTANG should print nothing but "solid, hard facts." Well the reason we did not publish the articles you mentioned is for the simple reason, "we didn't have the 'solid, hard facts'." Furthermore, I would be very appreciative if you would produce the stories we have printed which have not been fact.

### Don't Blame Us!

Editor:

In answer to the "shady deal" mentioned in "Comment Corral" Tuesday, we the members of Mat Pica Pl would like to clarify one point.

The incorrect movie listings on the Mat Pica Pl calendar were no fault of the Printing Department. The dates had previously been approved by the activities office.

The names of the movies were changed by the booking agent sometime after the calendars had been printed—approximately one week before the beginning of the fall quarter.

Mat Pica Pl Society of Printing Engineers

Don't forget the Mercy Bowl.

## Homecoming 1961 Begins Tonight

Homecoming—the once a year event when it's "back to Cal Poly" for the grads in Redding, Riverside, San Francisco and Stony Creek—is here again.

To give the Old Grads a "red-carpet welcome", campus coeds and Mustang men have been all week to make the 1961 event the biggest Homecoming of Poly's 86 years since it first graduated a class in 1906.

Representatives from the clubs which will sponsor floats for the Homecoming parade met Wednesday night in Agriculture 188 to discuss the floats, their construction and presentation.

The long awaited Homecoming Coronation Ball will take place tonight, at 9:30 in the Men's gym. The famous Jerry Gray 18 piece



JERRY GRAY

band will provide music and entertainment.

On Saturday, the judging of the parade floats will take place on the Safeway parking lot downtown on Marsh street at 10 a.m. The Homecoming parade will begin at 2 p.m.

The Homecoming game will be played Saturday night at 8:15 in the stadium, after which the Collegians will entertain at the Homecoming dance in the Men's Gym.

## Dine and Dance

Saturday Nite to the Music of

The Four Castles

## THE GOLDEN TEE

Resort Lodge — Merre Bay

Reservations — SPace 2-7313

Sure We're Crowing  
Homecoming Queen  
Is Worth Crowing About!

Breakfast

Lunch

Dinner

"Don't Drive by...

... Drive Inn"

**BARR'S DRIVE-INN**

4 Blocks from Campus  
Hiway 1 at Foothill

## RECAPS

18 Months Nation-  
Wide Guarantee  
WILLIE WATTS

OK

TIRE

SHOP

1418 Monterey  
Phone LA3-0452

KEY VALUE!

AMERICANA  
POPLIN  
JACKET

\$19.95

Season's big hit jacket.  
Sturdy cotton poplin with  
airflow foam lining. Knit  
Scandinavian collar and  
dropped shoulder insert.

Shop 'til 9 p.m. Thursday

**Wickenden's**

SINCE 1900

MONTEREY & CHORRO • SAN LUIS OBISPO



# Queen, Court Express Homecoming Sentiments, Welcome Alumni

By Penny Gardner  
Special Reporter

Cathy DeGasparis, lovely 1961 Homecoming queen, extends her greetings to returning alumni for the annual Homecoming:

"I sincerely hope you enjoy your visit to your campus, and recognize the same good qualities of the college you attended."

Cathy, Home Economics major from Guadalupe, says she is especially looking forward to the Coronation ball. "It will be a once in a lifetime experience for a queen. I believe it will be fabulous for everyone attending," she says.

"Naturally I hope we win the football game, but what matters most is the spirit

in which the game is played, and not who wins or loses," the pretty brunette said.

Cathy feels Homecoming is important because, for so many alumni, it is the only time they come back to see the school and the many changes on campus. "I hope they will be proud of their alma mater," Cathy beams.

Patti Walker Anderson, 1960-61 Queen will return to crown Cathy at the Coronation ball. Patti recently married Rick Anderson in the Church Bowl at Yosemite National park. She was formerly a ski instructor at the park and her husband was on the ski patrol. Patti was a Home Economics major while attending Cal Poly.

Princesses for the gala event are Sue Patton, Elaine Monson, Linda Paine and Gayle Schieder.

Elaine Monson, senior Elementary Education major from San Luis Obispo, says to the football team, "God bless you all, play hard and we'll win." Elaine feels Homecoming promotes a "togetherness" between the alumni and students. "It serves in an interrelating capacity between those who now belong to the Poly family actively and those who are products of this wonderful family," she comments.

Princess Linda Paine's hometown is Inglewood and she is a sophomore Business major. "Homecoming builds the spirit of the campus and welds it together, giving alumni an opportunity to visit the campus, see their past instructors and take part in the many activities," Linda believes. She says she is looking forward to the football game during the weekend more than any other event.

Hailing from Salinas is Princess Sue Patton, junior Home Economics major. Sue feels one of the most important reasons for Homecoming is promoting school spirit and bringing everyone together. "I wish the team luck and want to tell them we are all behind them," she says warmly.

A sophomore Elementary Education major from San Lorenzo is Gayle Schieder. Gayle says to the football team, "Good luck, you broad hunks of masculine prowess. Use your humor, wits, and broad shoulders to plow them under."

Gayle is looking forward to the Coronation ball because it's the weekend kickoff event and is the year's first formal dance. "Homecoming is one of the major events of the year and it promotes the spirit on campus for students and alumni as well," she says.

## Gala Festivities

(Continued from page 1)

Courthouse steps, at approximately 8:30 p.m.

National officers of the Alumni Association will hold a board meeting tonight at the Madonna Inn to discuss the new scholarship and loan program the association hopes to initiate, and review the association's finances. Campus administrative officials attending the meeting will be Dr. Dale Andrews, dean of the college, SLO; Don Nelson, business manager, and Dr. Douglas Miller, editor of the Alumni News.

Two showings of the movie, "The Last Hurrah," at 7 and 9 p.m. in the Little Theater building will also be open tonight to returning alumni. No admission will be charged, but donations will be accepted.

Kick-off time for the Cal Poly-San Diego game is 8:15 p.m. at the Mustang Stadium. A block of seats has been reserved for the alumni.

The Alumni mixer at the Madonna Inn wine room (alumni only) will follow the game. Coffee and sandwiches will be served to alumni.

## OH Alumni Barbecue

Annual fall barbecue at Cuesta Park, sponsored by the Ornamental Horticulture department, will host homecoming OH alumni at 4 p.m. Oct. 29.

Tickets, \$1.50, may be obtained at Ag 200, or reservations may be made by telephoning campus extension 478.

## Student Art Work Displayed At TCU

The first student art show at Cal Poly, currently on exhibit in the Temporary College Union, has been very successful, according to Robert Monteleone, assistant coordinator of the exhibit. Attendance at the show numbered more than 400 by Tuesday.

Included in the display are works by such student artists as Caroline Greenwood, Mary Correl, Tom Stowe, H. Peylan, Linda Arnold, and Susanna Ford. One oil is reputed to have been done by 18 architects, each contributing a "message".

**ROYAL**  
**TYPEWRITERS**

SALES • RENTALS • REPAIRS

New and Rebuilt Typewriters

JOHNNY

NELSON OFFICE EQUIPMENT

690 Higuera Street

Liberty 8-7847

"THE HOME OF CAL POLY JACKETS"

with Beno's patented cuff

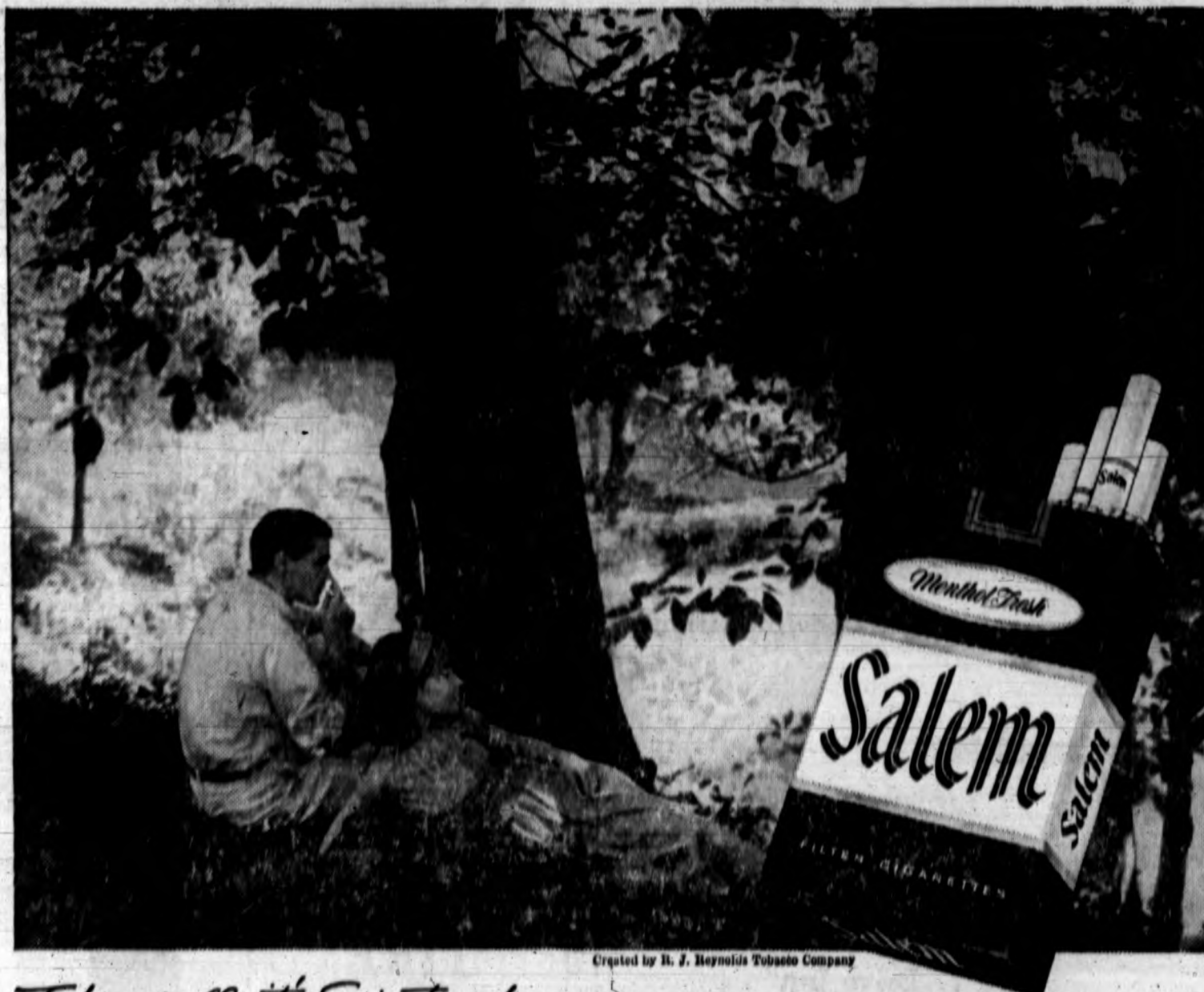
Special courtesy to Poly students

WE CASH YOUR CHECKS

**BIENOIS**  
QUALITY CLOTHIER... SINCE 1938

# Salem refreshes your taste

## —"air-softens" every puff



Created by H. J. Reynolds Tobacco Company

Take a puff... it's Springtime! Beneath ancient trees, which have known so many springtimes, you feel renewed and refreshed by the soft, cool air. And so your taste is refreshed by a Salem, the cigarette with springtime freshness in the smoke. Special High Porosity paper "air-softens" every puff. Enjoy the rich taste of fine tobaccos while you refresh your taste, with Salem!

- menthol fresh
- rich tobacco taste
- modern filter, too

## Mac Vanner Says...

College Men need a Specialist to help them get the most for their insurance dollars. That's because college men's insurance requirements differ from those of non-college men.

I specialize in life insurance for college men, with College Life's famous policy, THE BENEFAC-TOR, designed expressly for college men. And since college men are preferred risks, The Benefactor is priced to sell exclusively to college men. Like to know more? Call me. No obligation, of course.

## Mac Vanner

Representing the Only Company that Sells Exclusively to College Men

P. O. Box 531

San Luis Obispo

Phone LI 3-8714



*El Mustang*  
CALIFORNIA STATE POLYTECHNIC COLLEGE

# Homecoming Sports Special

## Homecoming Ingredients: Queen, Court, Ball



**BALL OF BEAUTY . . .** Envisioned in the football to be used in tomorrow night's Mustang-Devildog encounter are 1961 Homecoming Queen Cathy DeGasparis and her court (l to r) Elaine Monson, Sue Patton, Gayle

Schieder and Linda Paine. Queen Cathy and her court will be on hand at the game's half-time activities where they will award trophies and awards to the Homecoming float winners.

## Mustangs Face Leathernecks In Grid Clash Tomorrow Night

Cal Poly's Mustangs will be out to improve their season mark tomorrow when they interrupt CCAA action to take on the San Diego Marines in the annual Homecoming contest in Mustang Stadium.

The Mustangs were bounced recently by defeating champion Fresno State 48-18 and will try to get back on the winning track against the once-bested Marines.

Coach Leroy Hughes men will have lots of hard work to do tomorrow as they face the Marines who average 224 pounds per man on the line.

Hughes will count heavily on his shotgun offense with three quarterbacks alternating to call the plays. Ted Tollner will carry the brunt of the Mustang attack along with Dick McBride, Jack Jordan and Stan Reynolds. Tollner has done the majority of signal calling this season and leads

the club with 20 pass completions in 39 attempts. He also leads in total yardage with 291 yards gained.

Backing Tollner in the Mustang offense are Jim Fahey and Roger Kelly at half-back positions and Wayne Maples at full-back. Bob Parker, Fred Ragatz, Paul Lewis and Bob Stiles are available to the Mustangs for added backfield strength.

The Mustang line averages 212 pounds per man. Guard John Albee, transfer from Colorado State, and center Dave Edmundson from Bakersfield J. C., join the Mustang veterans to bolster the front line. Vets in the Mustang line include Bob Johnson, guard, with two years experience; Roy Seislabba, guard, named player of the week for his performance against Fresno State; John Brennen, 225 lb. tackle; and Bill Dauphin, 230 lb. tackle. At the ends

stand 235 lb. Fred Whittingham and 195 lb. Fred Brown, principle targets for the throwing of Tollner.

As a team, the Mustangs have notched two victories this season, over San Fernando Valley State and Long Beach State. The Mustang losses came on the season opener to San Diego State 9-6 and to Fresno. The San Diego game was lost in the final 50 seconds on a punt return for an Aztec touchdown.

Poly's foes tomorrow night bring just as impressive record with them as any team on the Mustang schedule. The Marines have racked up an average of 270 yards per game with 200 yards picked up via the aerial route.

Defensively the Marines have held their opponents to 190 yards gained per game and an average score of 9.3 points per

game. The key to the Marine defense has been its pass defense which has allowed only 281 yards in four games. The "shotgun" offense, led by quarterback trio of Tollner, Reynolds and McBride, will be a real challenge to the Leatherneck pass defense.

The Marines are coached by Maj. Allen S. Harris, Head coach, 1st Lt. John Fritch, 1st Lt. Vern Rosene, 1st Lt. Donn Carswell and Sgt Mike Wiggins, assistants.

Following tomorrow night's contest with the Marines, the Mustangs travel south to meet Los Angeles State in a CCAA tilt. The Diablos boast Little All-American Joe Womack, the leading rusher in the CCAA for two years.

The Cal Poly squad will return to wind up its season against Adams State, (Col.), and Santa Barbara.

## STARTING LINEUPS

### Cal Poly Mustangs

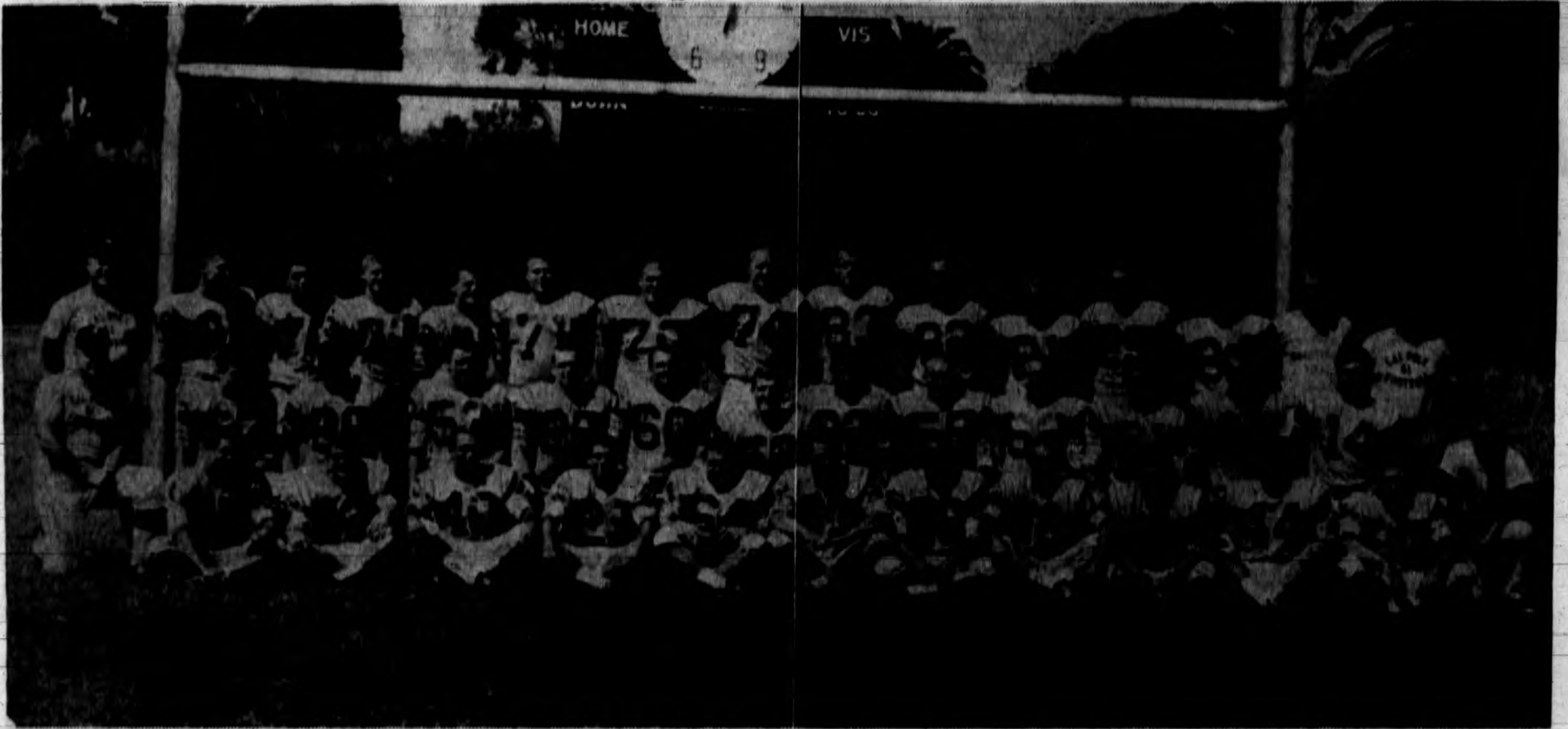
Name	Wt.	Ht.	Class	Exp.	Positions
Fred Brown	195	6-2	Sr.	1V	LE
Bill Dauphin	220	6-1	Jr.	1V	LT
Bob Johnson	195	5-8	Sr.	2V	LG
Dave Edmundson	210	6-0	Soph.	JC	C
John Albee	210	5-11	Jr.	Trans.	RG
John Brennen	225	6-8	Jr.	1V	RT
Fred Whittingham	235	6-2	Jr.	Frosh	RE
Ted Tollner	195	6-2	Sr.	2V	QB
Jim Fahey	185	5-11	Jr.	1V	LHB
Roger Kelley	185	6-0	Sr.	2V	RHB
Waynes Maples	200	6-1	Soph	Frosh	FB

### San Diego Marines

Name	Wt.	Ht.	Age	Exp.
John Lee	205	6-2	23	Coll
Tony Anthony	230	6-1	24	Coll
Dom Bruno	225	5-9	22	JC
John Yohn	225	6-0	23	Coll
Tony Stremic	205	5-11	23	Coll
John Fritch	245	6-8	25	HS
M. Hollingshead	215	6-2	25	Coll
Tom Maudlin	180	6-1	25	Coll
Kelton Winston	206	6-1	20	Coll
Billy Charles	185	5-11	25	HS
Perry Rodrigue	197	5-8	20	Coll



# ... DEVILDOG RECORD MAKES



**THE MUSTANGS** . Here is the 1961 edition of the Cal Poly Mustang football team which will meet the San Diego Marine Devildogs here tomorrow night in the big Homecoming game. The Mustangs go into the game with a two and two record. Last

week they upset the dopesheet and handed the Long Beach State 49'ers a 21-14 loss. In the last meeting between the two teams, the Marines took home a 27-18 win.

## Mustang Starting Lineup Profile...

Profile on Mustang probable starting line-up:

**FRED BROWN**, end, 6-3, 195, Sr. from Albany... second season with Mustangs... better than average receiver... runs hard.

**BILL DAUPHIN**, tackle, 6-0, 215, Jr. from Shafter... returning letterman... good blocker... good defense.

**BOB JOHNSON**, guard, 5-8, 195, Sr. from Birmingham, Ala... third season with Mustangs... one of most rugged linemen in conference.

**DAVE EDMUNDSON**, center, 6-0, 205, Jr. from Bakersfield... played at Bakersfield J.C. last season... All-Valley at Bakersfield High in 1959.

**JOHN ALBEE**, 5-11, 210, Jr. from Bakersfield, last season's frosh captain... holds letter from Colorado State University... excellent defensive man.

**JOHN BRENNEN**, tackle, 6-2, 285 from Glendale... second season... quiet type... strong and silent, but gets the job done.

**FRED WHITTINGHAM**, end, 6-2, 235, Jr. from Pittsburgh, Pa... one of biggest ends in Mustang history... fast... good hands... strong defensively.

**TED TOLLNER**, quarterback, 6-2, 195, Sr. from Palo Alto... led CCAA in total offense last season with 908 yards in only six games... led all passers with 965 yards... in third season.

**ROGER KELLY**, halfback, 6-0, 185, Sr. from Bakersfield... third season... fourth leading scorer in CCAA last year... averaged 4.6 yards per carry... good broken field runner.

**JIM FAHEY**, halfback, 5-11, 185, Jr. from Gilroy... second season... runs hard... likes lots of action.

**WAYNE MAPLES**, fullback, 6-1, 195, Jr. from Bishop... up from frosh... hard runner... regular on baseball squad also.

## COACHES

**SHELDON HARDEN**  
In his 18th year as Mustang grid assistant, Coach Sheldon Harden will assume the head coach duties in 1962 when Hughes retires. Harden has earned the tag "Mr. Conditioner" at Cal Poly through his emphasis on conditioning of athletes.

**HOWARD O'DANIELS**  
An ex-Mustang Head Coach, Howie O'Daniels is now an assistant coach of the Mustangs. O'Daniels resigned as head mentor from 1955-61 and 1966-67 (Navy duty intervened), where he established a 60-33 win-loss record before stepping to the background.

**WALT WILLIAMSON**  
Walt Williamson is a mere youngster on the Mustang staff. In his two years at Cal Poly, Walt has created an outstanding name as a coach with "fresh new ideas." Williamson has specialized in working with the backfield.

## Head Grid Mentor Enters Homecoming With 69-36 Record

Back in 1949, a gentleman named LeRoy Barry "Silver Fox" Hughes came to Cal Poly to begin his first of 12 years as head grid mentor of the Mustangs. A quick glance at the record of his grid squads will show that his work was not in vain. His teams have compiled 69 wins and 36 losses during this span.

In his first year here, Hughes guided his team to a 5-7 win-



ROY HUGHES

loss record. The following year the Mustangs finished 5-4 and things improved for Hughes. In 1952 the squad ended the season 7-8. But 1953 was the year for the Hughesmen to shine. The Mustangs went

## Mounted Up

## Mustang Gridders Out For Eighth Homecoming Win

Cal Poly's Mustangs will be out to score their eighth victory in eleven Homecoming grid tilts under direction of Head Mentor LeRoy Hughes tomorrow in the local stadium when they oppose the San Diego Marine Recruit Depot Devil-

dogs at 8 p.m. Hughes, reigning as head coach for 12 seasons, will make his final Homecoming appearance as coach this year. Assistant coach, Sheldon Harden, will assume the coaching reins next season.

Under Hughes, the Mustangs have compiled seven wins and three defeats in past Homecoming contests. The last victory was in 1958 over Montana State 16-6, while the Mustangs lost the 1959 tilt to Fresno State 28-13. The 1960 skirmish was cancelled by the Toledo air disaster.

Hughes' success in the Homecoming contests began in his first season at Poly when Chico State was trounced 45-18 in 1950. Santa Barbara Gauchos were the next victims, 14-7. The Whittier Poets handed the Mustangs a 42-20 loss in 1952. San Francisco State and Los Angeles State fell to the Mustangs next, but McMurry of Abilene, Texas, stopped the Hughesmen 28-13 in 1955. Again on the winning track, the Mustangs romped over Long Beach State 65-12, San Jose State 14-7, and

undefeated in nine games and were also the top scoring team in the nation. Two more CCAA championships were brought home in '57 and '58.

The final chapter of Coach Hughes' reign at Cal Poly is now being written by the 1961 squad. Hughes will retire from his illustrious career at the close of this season. However, to carry on in his tradition, the Silver Fox leaves his three proteges.



**GENERAL**... Ready to roll is Ted Tollner (14) of the Mustangs. Ted is the key to the Cal Poly "shotgun" attack which will try to shoot down the high-flying Marines tomorrow night.

Transistor Battery #216	12" Heavy Magnet
1/2 price .....89c	Speakers .....6.50
FM Tuners .....19.95	Electrovoice Speakers
FM Radios .....26.50	Special Price
Stereo Changers VM	
Complete w Base ....39.95	5 Tube Radios from 14.50
Garrard 210 .....46.50	Portable Phonographs
Garrard Model A ....79.50	Transistor Radios

All kinds of Electronic Supplies  
Car Radios & Auto Antennas from 1.95

**FREE ESTIMATES ON HOME AND AUTO RADIO REPAIRS**

**Wesco Electronics & Bill's Radio Sound**

747 Marsh

**PAPPY'S OLD FASHION FRIED CHICKEN**

**CHICKEN ON THE GO**

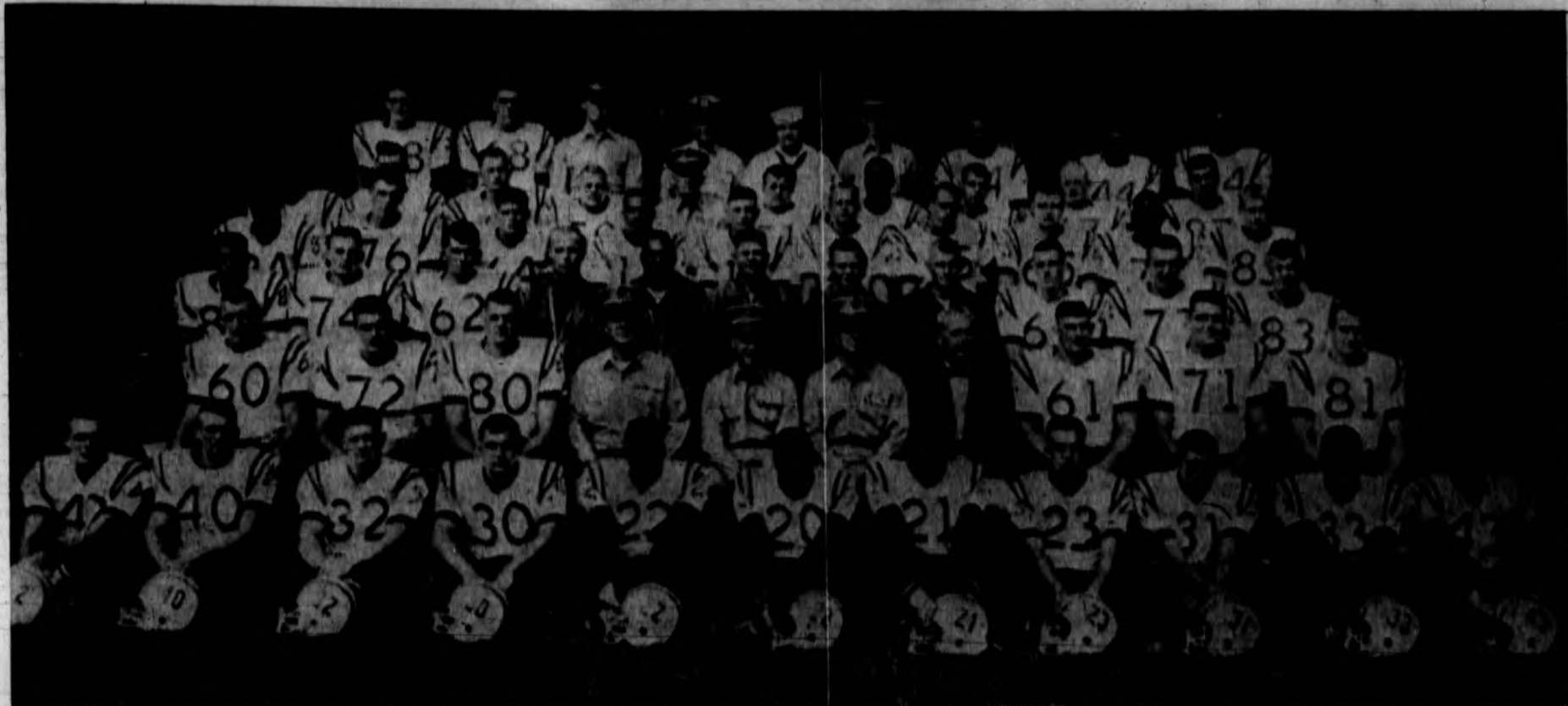
"READY IN MINUTES"

BUY BOX  
BUY BUCKET  
BUY BARREL

LI-4-0901  
2015 MONTEREY



# THEM PRE-GAME FAVORITES . . .



THE MARINES . . . San Diego Devil Dogs, ready for tomorrow's big clash, are one of the largest teams Poly has faced. They are paced by many veterans of past football wars,

both collegiate and professional. Deep in every position, the Marines have suffered only one setback this year, a 12-0 loss to U.O.F.

## Leathernecks Land

### Marines Bring 4 Win-1 Loss Season Into Mustang Tilt

The Marines have landed! They landed hard on four opponents so far this season and are now ready for the Mustangs. The once-beaten Marine Corps Recruit Depot Devil Dogs oppose the Mustangs here tomorrow night in the Homecoming grid contest. The Leathernecks romped to early victories over the

University of New Mexico 41-16, Eagle Rock A.C. 28-21, Valley All Stars 22-0 and the University of San Diego 27-0. The Marines suffered their only loss to date to University of Pacific last week.

The strong Marine attack has averaged 24.5 points in these four contests, due mainly to the fine passing of former USC quarterback Tom Maudlin. Named the "All-Sea Service (Navy and Marine Corps) Most Valuable Player" while competing for Quantico last year, he completed 15 of 18 pass attempts for 250 yards and three touchdowns against a strong University of San Diego team. Maudlin has passed for 796 yards this season.

Maudlin's favorite targets have been former Mississippi State star Marshall Hollingshead, who has grabbed 14 passes for 254 yards and two touchdowns, and Kelton Winston, who has snagged seven aerials for 207 yards and two TD's. Winston and Maudlin combined to score on a 67-yard play against the San Diego University team.

A fine passing attack is bolstered by some very adept ball-

carriers. Winston added 226 rushing yards to the passing yardage of the Marine offensive and is tops in these two areas. He is flanked by halfback Billy Charles, who has gained 162 yards in 31 carries.

At the fullback slot is hard-hitting Perry Rodrigue, 197-pounder with a 4.6 yard average.

On the line, the Marines feature John Yohn, 225-lb. center; Dom Bruno, 225; Tony Stremic, 205, at guards; Tony Anthony, 280, and John Fritsch, 245, at tackles, and John Lee, 205, and Hollingshead, 215 at ends. They total 1570 pounds and average 224 from end to end.

#### Highest Since 1952

Enrollment in the college's ROTC program this quarter reached its highest level since 1952 with 274 students, announced by Lt. Col. A. F. Mariconda, head of the Military Science and Tactics dept.

QUARTERBACK . . . Tom Maudlin of the Marines (15), remembered for his football days at USC, will lead the Leathernecks against the Mustangs tomorrow night.

*the shoe that goes to all degrees for good looks, long wear, genuine economy...*

**FLORSHEIM**

**\$19.95**

The class of the classroom—that's Florsheim. Shoes that take the toughest wear and weather in stride—and come up shining. Pick a pair and wear them proudly.

**Reisig's shoes**

Chorro at Higuera  
Next to Ross Jewelers



## Farleys Fine Food

785 Higuera

Open 8 a.m. to 9 p.m.

AND

## Farleys Jr.

The new 24 hour restaurant

Merro and Marsh

"Where the customer is king"





**STRATEGIC CONFERENCE...** Head Football Coach Leroy Hughes talks over the coming game with survivors of last year's accident who will be seen in action tomorrow night against the San Diego Marines. Left to right: Hughes, Ted Tollner (kneeling), Roy Scialabba, Brent Jobs, Roger Kelly, Dick McBride, Fred Brown, Carl Bowser, Bob Johnson, John Brennan, and Bill Dauphin. Bowser is ineligible this season.

## The Wild Ones



**A TIME TO CELEBRATE...** loyal Mustang rooters express enthusiasm as Cal Poly tallies on way to upsetting the Long Beach 49ers in last Saturday's CCAA grid clash at the local field. Fans did everything but demolish the stadium as the final gun sounded proclaiming the Mustang victory.

A missionary traveling through the jungle met a lion. Flight was hopeless; he fell to his knees in anxious prayer. A few moments later he was greatly comforted to see the lion on his knees beside him. "Dear Brother," said the relieved missionary, "how delightful it is to see you join me in prayer when a moment ago I feared for my life." "Don't interrupt," said the lion, "I'm saying grace."



The desk illustrated is just one of the many items that we carry especially for the student. Come on in and look over our stock as well as the many illustrations of things that we do not have room to handle.

### GLIDDEN PAINT CENTER

College Square Shopping Center  
894 Foothill Blvd.

## Water Polo Squad Hosts Cerritos JC

Cal Poly's fine water polo squad, which lost its first league match to Long Beach last week, will tune up for its all important league game with L A State on Nov. 4 by taking on Cerritos J C here today in the Polo pool.

Coach Anderson's group, who hold league wins of 11-7 over Santa Barbara, and 20-10 over Fresno are still very much in title contention. A victory over the

Diablos coupled with a Long Beach loss would throw the Mustangs into the league lead.

### FOR RENT

1 or 2 bedroom Housekeeping CABINS

at Avila Beach

Reasonable Rates

Phone 595-2811 Avila

## Hobby Headquarters . . .

Lettering Materials  
Model Plane and Railroad Supplies  
Mosaic and Art Supplies  
Artificial Flower Supplies  
Paint by Number, Scroll Arts  
Plus Asst. of Model Kits, Plastic and Wood

## Marv's Hobby Shop

735 Marsh

LI 3-3942



## Quality is the key to success at Western Electric

Admittedly, our standards are high at Western Electric. But engineering graduates who can meet them, and who decide to join us, will begin their careers at one of the best times in the history of the company. For plentiful opportunities await them in both engineering and management.

As we enter a new era of communications, Western Electric engineers are carrying forward assignments that affect the whole art of telephony from electronic devices to high-speed sound transmission. And, in the management category alone, several thousand supervisory jobs will be available to W.E. people within the next 10 years. Many of these new managers will come from the class of '62.

Now's the time for you to start thinking seriously about the general work area that interests you at Western Electric, the manufacturing and supply unit of the Bell Telephone System. Then when our representative comes to your campus, you'll be prepared to discuss career directions that will help make the interview profitable.

After a man joins Western Electric, he will

find many programs that will aid him in exploring the exciting course of his career — while advancing just as fast as his abilities allow. And he'll be secure in the knowledge that he is growing with a company dedicated to helping America set the pace in improving communications for a rapidly growing world.

Challenging opportunities exist now at Western Electric for electrical, mechanical, industrial, and chemical engineers, as well as physical sciences, liberal arts, and business majors. All qualified applicants will receive careful consideration for employment without regard to race, creed, color or national origin. For more information about Western Electric, write College Relations, Western Electric Company, Room 6100, 522 Broadway, New York 22, New York. And be sure to arrange for a Western Electric interview when our college representatives visit your campus.



Principal manufacturing locations at Chicago, Ill.; Kearny, N. J.; Baltimore, Md.; Indianapolis, Ind.; Allentown and Laurelale, Pa.; Winston-Salem, N. C.; Buffalo, N. Y.; North Andover, Mass.; Omaha, Neb.; Kansas City, Mo.; Columbus, Ohio; Oklahoma City, Okla.; Engineering Research Center, Princeton, N. J.; Teletype Corporation, Skokie, Ill.; and Little Rock, Ark. Also Western Electric distribution centers in 33 cities and installation headquarters in 18 cities. General headquarters: 195 Broadway, New York 7, N. Y.