

Meet The Speakers For Religion-In-Life Week



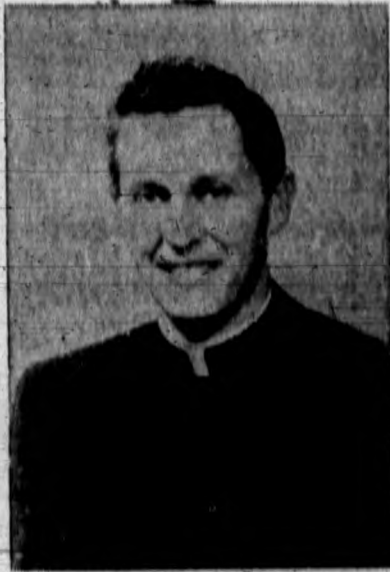
Dr. Philip J. Danton . . . Rector of St. Michael and All Saints Episcopal Church in Concord, born in England and received his B.A. and M.A. at Oxford. Received his theological degrees from Princeton and Pacific School of Religion.



Rabbi Morton A. Saruman . . . Spiritual leader of Temple Beth Millel in the San Fernando Valley. Received his B.A. from the University of Cincinnati and was ordained from the Hebrew Union College there.



Kenny Baker . . . Christian Science Reader at Vandenberg Air Force Base. Has been active in theaters, motion pictures, TV and radio for 25 years. Writes for Christian Science periodicals.



Rev. Fr. William J. Barry . . . Director of the Los Angeles office of the Catholic Welfare Bureau. Was ordained at Saint John's Seminary in Camarillo.



Rev. James G. Upshaw . . . Presbyterian minister. Received his A.B. from the University of Miami in psychology and received his B.D. from Princeton Theological Seminary.

El Mustang

CALIFORNIA STATE POLYTECHNIC COLLEGE *

VOL. XXII, NO. 13

EL MUSTANG

Friday, Jan. 15, 1960

RILW Activities To Start Sunday

"Campus Life—A Challenge to Faith" is the theme of Religion-In-Life Week at Cal Poly next week, Jan. 17-21. Five guest speakers representing various denominations will participate in seminars, discussion sessions, and assemblies with the purpose of stimulating religious thinking, relating college to religion, and bringing students closer to God, RILW officials say.

Religion-In-Life Week began four years ago, and is sponsored by the Campus Interfaith Council, local churches, and students interested in religion.

Executive committee members for this year's program include: Julian A. McPhee, Honorary Chairman; Chio Jones, Student Chairman; Barbara Wheeler, Secretary; Donna York, Treasurer; Barbara Boris, Public Relations; Dr. Marvin Brown, Faculty Advisor; and Rev. Ray Heer and Rev. Bill Brewer, Coordinators.

Committee chairmen include: Lynn Chown, Arrangements; Al Bateman, Assemblies; Ann Jordan, Breakfast and Retreat; Sue Bromley, Club Assignments; Bill Powell, Continuation; Irene Holmes, Displays; Gene Moraga, Dormitories; Calvin Strother, Faculty; Pat Soule, Hospitality; John Hunyon, Personal Conferences; Wendall Keays, Seminars; and Ralph Paulin, Worship.

Public Relations sub-chairmen are: Ken Smith, Church Relations; Gerry Hedgecock, Newspaper; Dick Warner, Loudspeaker, Radio and TV; Steve Ryan, Photography; Bernie Klein, Programs; Alice Campbell, Newsletter; and Bill Brooks, Posters.

Kenton's Coming

Modern Music Men of Jazz To Play Concert Jan. 25

A personal appearance by Stan Kenton and his orchestra will highlight social events of the winter quarter when he unravels his skein of modern music before Cal Poly students on January 25, in the new gym.

Kenton's stand in San Luis Obispo is one of the many stops he is making at colleges throughout the nation. His tour is designed to initiate novices into the realm of progressive jazz and to entertain the "experts".

The Rendezvous in Balboa, California was the scene of Kenton's first success as an orchestra leader

Notes On SAC Meeting

Student Body Receives Thanks For Building Winning Float

"It's a real pleasure to be able to congratulate Cal Poly's bi-campus student family for again winning a first-place award with a Rose Parade float," said Vice-president Robert E. Kennedy in a letter to the student body read by Student Body President Ed McGraw to members of Student Affairs Council Tuesday night. Cal Poly's float, "Special Delivery," placed first in Division H, Education.

According to Bob McCorkle, who worked on the float and attended the parade, the float, which cost a little over \$900 to build, was competing against floats costing \$12,000 to \$14,000 from the Big Ten and Pacific Coast Conference. McCorkle added that Henry House, Rose Parade Float Advisor and Dean of Activities at the Kellogg-Voorhis campus, had extended his thanks to all Cal Poly students who helped finance and prepare the Cal Poly Rose Parade float. Working with House were Rose Parade Float Co-chairmen Bob Cushman and Bill Jacobs.

Skip Munsee, SAC Secretary, reported on a recent meeting of the California State College Student Presidents Association held Dec. 11-12 at Los Angeles State College. Munsee and Tom Bragg had been appointed by SAC to represent McGraw, who was unable to attend.

Munsee said that the CSCSPA Parking Committee, which has been working in an attempt to solve the state college parking problems, presented a petition to CSCSPA which stated, "We, the members of the CSCSPA, are opposed to the paid parking program as it is now established and administered."

"However, we are cognizant of the fact that the State of California

is faced with tremendous burdens caused by the rapidly expanding program. For this reason we recognize the necessity of the State to direct its primary efforts towards providing essential classroom facilities.

"At the same time we feel that there are certain other services which are essential for the operation of a college program and this would include parking facilities. Since the state is unable, at this time, to provide adequate services in this field we feel that it would be proper for the state to require

(continued on page two)

Dedications and Rally To Precede Game Tonight

New college buildings on the Cal Poly campus will be officially dedicated tonight at 8:00 in the new gym, immediately before the San Diego State-Cal Poly basketball game. A serpentine rally starting at the campus dormitories will precede the dedication. To be dedicated in the pre-game ceremonies

are the gym, the Agriculture and Social Science Building, the Mathematics and Home Economics Building, and the Health Center. Guests present for the dedication will include State Senator A. A. Erhart, Assemblyman James L. Holmes and Dr. J. Burton Vasche, of the State Department of Education.

Vice-president Robert E. Kennedy and Dean of the College Harold Hayes will preside at the ceremonies. President Julian A. McPhee will accept the buildings for the College from Senator Erhart.

The serpentine rally, expected to be the biggest of the year, will feature two "snake lines." One will start at the mountain dormitories at 7:15 P.M., and the other at the women's dormitories at 7:35 P.M. The lines will meet at South Perimeter Rd. and Pepper Lane.

At each stop, members of the Rally Committee will go through the dorms to bring out the waiting students.

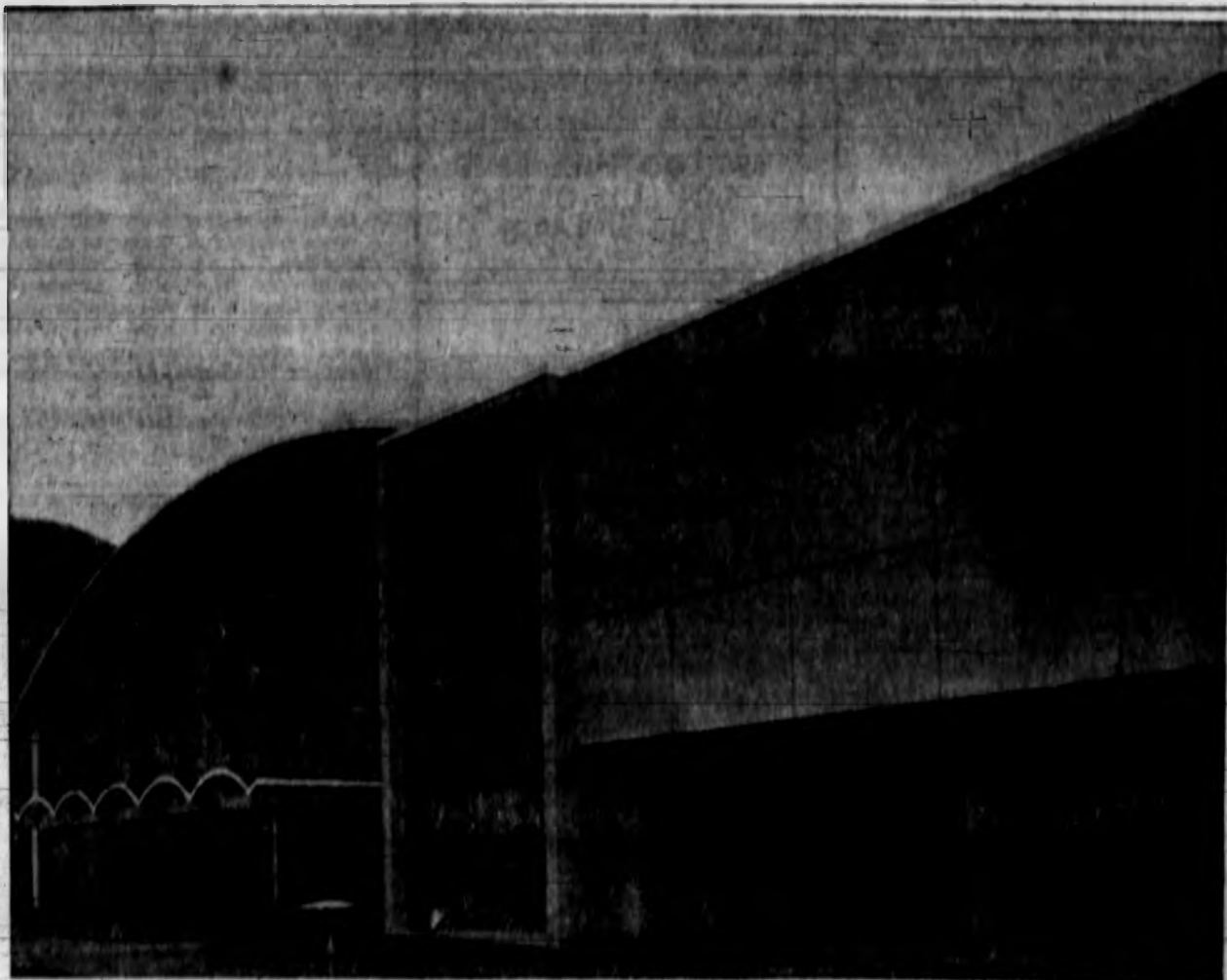
Off-campus students are invited to participate in the rally, and can join the snake lines at any one of

the dormitories. No one will be allowed to enter the lines after they meet at South Perimeter Rd. and Pepper Lane.

Monday Last Day For Filing 'Outstanding Senior' Bids

Applications for Outstanding Senior Awards which are to appear in the 1960 El Rodero are available in the ABE Office, according to Skip Munsee, ABE Awards Committee Chairman. Forms must be returned no later than Jan. 18 to be considered for the honor.

Recognition will be based on the academic and co-curricular activities in which seniors have participated while attending Cal Poly.



There's no place like home . . . Cal Poly's new \$2,200,000 physical education plant will be dedicated Friday night along with three other buildings. President McPhee will accept the buildings for the college and guest speakers will include State Senator A. A. Erhart and Dr. J. Burton Vasche, Department of Education. A basketball game with San Diego State and a serpentine rally will complete the dedication ceremonies.

RILW BULL SESSION SCHEDULE

Rev. Upshaw	Tehema Dorm	1-19-60	9:30
Rev. Upshaw	Jespersen Dorm	1-20-60	9:30
Mr. Baker	Westminster House	1-20-60	9:30
Rev. Upshaw	Sonoma	1-18-60	7:30
Rev. Dauntan	Palomar	1-18-60	9:00
Rabbi Dauman	Lassen	1-18-60	9:30
Mr. Baker	Heron	1-18-60	10:00
Rev. Upshaw	Westminster House	1-17-60	9:30
Rev. Fr. Barry	Newman Club	1-17-60	9:00

General Electric Has 56 Poly Men

The General Electric Company is currently employing fifty-six Cal Poly graduates.

The graduates' names with an indication of cities in which they are working follow:

D. N. Aboudara, 1950, San Francisco; C. A. Arnold, 1949, Palo Alto; B. J. Beach, 1958, San Jose; B. D. Bonham, 1951, Holyoke, Mass.; S. Bradley, 1957, Dallas, Texas; W. S. Ching, 1951, Syracuse, N.Y.; J. D. Cleavinger, 1952, Evendale, Ohio; H. E. Cory, 1949, San Leandro; C. E. Cummings, 1958, San Jose; F. Fong, 1951, Syracuse, N.Y.; J. P. Franz, 1955, Schenectady, N.Y.; P. E. Giles, 1951, Johnson City, N.Y.; O. R. Gobby, 1956, Palo Alto; L. A. Gonzales, 1958, San Francisco; J. Goodman, Jr., 1954, Fort Wayne, Ind.; R. D. Greenway, 1957, Philadelphia, Pa.; D. L. Griffith, 1954, Erie, Pa.; J. E. Hanan, 1958, Irmo, S.C.

C. L. Henkel, 1950, Los Angeles; C. A. Hensonflow, 1958, Erie, Pa.; R. D. Hill, 1955, Edwards; D. E. Hughes, 1952, Pleasanton; M. E. Hunt, 1951, Los Angeles; C. M. Johnson, 1951, San Francisco; J. J. Jolly, 1957, Philadelphia, Pa.; H. S. Jones, 1951, Utica, N.Y.; J. E. Jones, 1947, New York, N.Y.; R. V. Linton, 1957, Evendale, Ohio; A. I. Martin, 1951, Fort Wayne, Ind.; A. Martinez, 1956, Los Angeles; W. J. McDonald, 1951, Schenectady, N.Y.; C. R. Mafford, 1956, San Jose; J. W. Meukow, 1957, West Lynn, Mass.; D. C. Milley, 1958, Schenectady, N.C.; V. A. Mize, 1958, San Jose; S. Moise, 1955, Evendale, Ohio.

C. M. Nielsen, 1952, Syracuse, N.Y.; J. W. Oneto, Jr., 1951, San Francisco; J. A. Pleroy, 1958, Evendale, Ohio; J. S. Rice, 1958, Los Angeles; R. Richter, 1956, Schenectady, N.Y.; F. L. Rising, 1954, Richland, Wash.; F. F. Smith, 1951, San Jose; R. E. Snowman, 1956, San Jose; W. C. Stone, 1954, Holyoke, Mass.; R. H. Stone, 1955, West Lynn, Mass.; H. Swanson,

African Student Explains Meaning of Facial Scars

A group of foreign students were singing and giving impromptu talks at a Rotary dinner recently when an African student from Sudan stepped up to the microphone.

The audience of both foreign students and American Rotarians noticed six short straight scars on the cheeks of the speaker. "My name is Abul Gasim Mohammed Bollman. Many of you have no doubt been wondering about these marks on my face, but have been too polite to ask about their meaning," he began. "But that's all right. Your asking will not embarrass me; in fact, I'll tell you the significance of these marks right now."

"They were made when I was one year old."

There was a sigh of relief when the explanation was concluded. "My grandmother made these marks hoping that I would become more attractive to the girls."

Student Body Thanked

(continued from page 1)
the students to assist in providing this service.

"However, the need and requirements of the various colleges are so diversified that no one program would be satisfactory to all state colleges. For this reason we feel that any paid parking should be adjusted to fit the various campuses and should be planned and administered at the local level and aimed at the solution of the local problems."

Munsee said that eventually this petition will be sent to all California state colleges for acceptance in hopes that it may help solve the parking problem.

1958, Idaho Falls, Idaho; D. G. Talone, 1957, West Lynn, Mass.; J. S. Tarabula, 1951, San Francisco; J. M. Taylor, 1958, Syracuse, N.Y.; E. R. Thurman, 1951, Cleveland, Ohio; K. Tomiyasu, 1940, Palo Alto; A. Turkot, 1958, Palo Alto; L. D. Wells, 1949, Edwards; H. V. Wilson, 1951, Ithaca, N.Y.; E. L. Wyneken, 1955, Los Angeles.

BARR'S



DRIVE-IN
RESTAURANT

HURLEY'S PHARMACY

Complete Drug Store Service
Nationally Known Cosmetics
Reliable Prescription Service
Lowest Prices

We cash student checks
896 FOOTHILL BLVD.
SAN LUIS OBISPO
Liberty 3-5950

PLENTY OF FREE PARKING



4 chairs to serve you

Air Conditioned
for your
convenience

NOW we have a special appointment chair. Just call and we will be ready when you arrive.

— No waiting —

MOST MODERN SHOP
IN TOWN

College Square Barber Shop

Closest Shop to Poly
LI 3-8283
892 Foothill Blvd.



Ladies Hair
Styling and Cutting

Poly Players Plan Buildings To Be Dedicated Winter Production

Call him the grim reaper, the impartial observer, or death. No matter what the name, he will be the subject of the Poly Players' winter production, "Death Takes A Holiday," by Alberto Cassella, to be presented March 4 and 5.

Dave Horton in the role of Death will be supported by a cast of 12 other Poly students, including Lois Roberts, Bill Jesse, Richard Adden, Kay Schneider, Julie Bishop, Alice Cressay, Don Bishop, Charlotte O'Bannon, Ron Morgan, Tom Crawford, Kay Johnson, and Seymour Klein. Carol Rizzo will be student director.

Kelth Nielsen, drama instructor and director of "Death," has high expectations for an even more successful performance than the recent production of "Picnic."

Another drama has been slated for February by the Poly Players. "The Valiant" by Holworthy Hall and Robert Middlemass, a one act play, is scheduled for a campus performance on February 11.

Poly Players president George Greelman will head the cast of "The Valiant." Working with him will be Keats Marshall, Pam Reynolds, Todd Anderson, Don Dewar and Bill Jesse, under the direction of Jan Ferry.

Both casts were chosen during tryouts last Wednesday and Thursday nights, but there are openings for stage crew. Interested persons who would like to work on set construction, lighting or costumes may contact Poly Players on Wednesday nights in Class Room 6, or Nielsen Mathematics and Home Economics Room 110.

Plan Bridge Club For Poly Students

A large number of colleges and universities have bridge clubs which, each year, compete on a national scale. If enough interest can be developed to assure a minimum of 20 to 30 players, Lyman P. Stoker, Mechanical Engineering instructor, has consented to sponsor such a club to meet once a week for instruction and supervised play.

Ability to play a good game of bridge is a social asset that will serve a lifetime. Interest in the game is widespread enough that a sponsor has been found for half hour of Championship Bridge on TV on Sunday afternoons. The American Contract Bridge League has a membership numbering hundreds of thousands with local clubs in most cities of 20,000 or more population.

Students can indicate their interest in this club by signing up in the ASB office.

Cal Poly Newman Club Plans Snow Trip

Cal Poly's Newman Club executive committee talked about plans for a snow trip to Sequoia National Park, January 28, 29, 30, at their meeting Monday night.

The trip is being sponsored by Fresno State College Newman Club and will include schools from the northern region of the province. Snow activities will include tobogganing, ice skating, and singing at the fireplace at night.

It is hoped that Poly will bring a large number of students on this excursion. Anyone interested should see the club president, Mardy Zegers. It will also be possible to sign up for the trip at the next general meeting Monday night at Mission hall.

The California State Polytechnic College Foundation was established in 1940.

Tons of

SURPLUS ELECTRONIC GEAR

THE LARGEST STOCK BETWEEN L.A. & S.F.

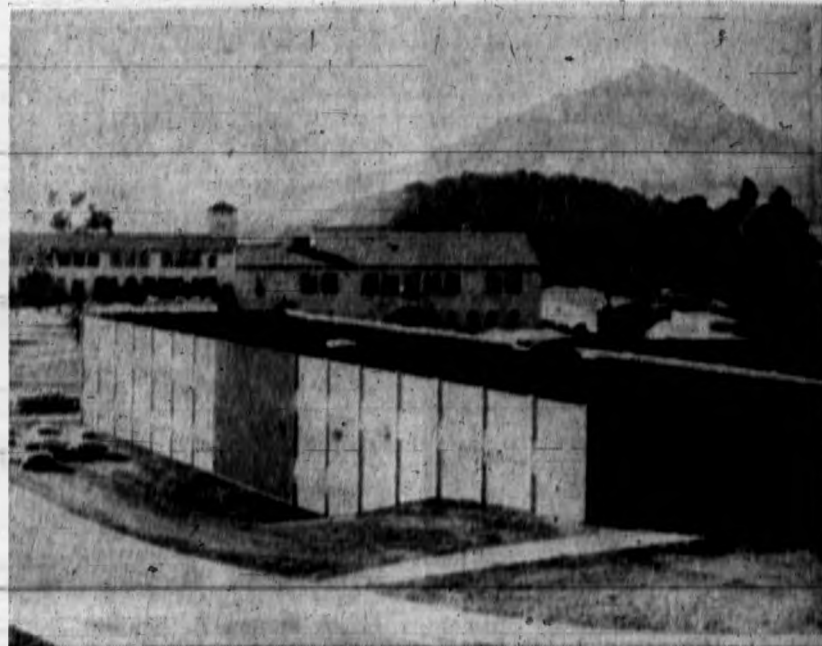
C 4 URSELF

BETWEEN 7 & 9 p.m. NITELY EXCEPT MON.
SAT. 1:30 TO 5:30

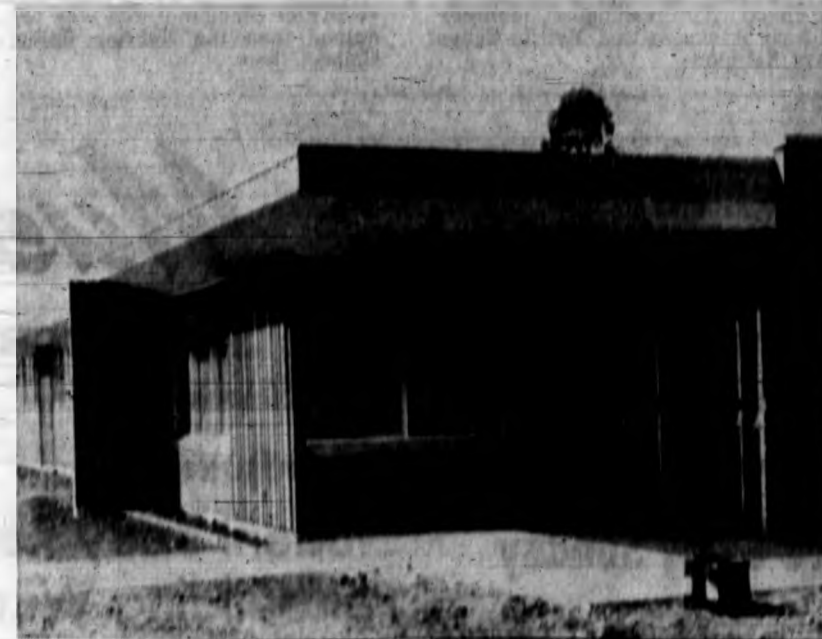
SEPOST RADIO SHACK

340 HIGUERA STREET
S L O

SCHOOL SUPPLIES FOR YOUR
AFTER HOUR NEEDS



MATHEMATICS AND HOME ECONOMICS BUILDING includes laboratories and classrooms, plus facilities for electronic computer.



HEALTH CENTER, costing \$1.7 million, houses medical staff and can handle anything from a common cold to emergency surgery.



AGRICULTURE AND SOCIAL SCIENCES BUILDING cost \$1,701,000, has classrooms, laboratory facilities and faculty offices.

Schedule Announced For Senior Photos

Senior pictures will be taken next week in AgEd 216. The photographers will be working from 8:30 A.M. to 10 P.M. Any senior who has not received an appointment through the mail should check with the El Rodeo staff in AgEd 216.

Livestock Judgers Travel To Denver

Cal Poly's livestock Judging Team members traveled to Denver, Colorado this week to participate in an intercollegiate earload judging contest and livestock judging contest at the National Western Stock Show, Jan. 15 and 16.

In the earload judging contest the team will judge five different classes of earloads which consist of 15 or 25 animals in a earload group, and in the livestock judging contest the team will judge all types of livestock.

Your Out of Town Guests
Are Welcome At

Rancho San Luis

345 Marsh St.

For reservations call
Carl Bowser

Jorgy's Jumpin' Juggernaut Meets Aztecs in Gym Debut

Though President McPhee may not break any scoring records tonight, he will have the distinction of sinking the first basket of the evening in pre-game dedication ceremonies scheduled for 8 P.M. prior to the Mustang-San Diego State Aztec CCAA battle.

Should President McPhee show any signs of the shooting talent displayed by Ed Jorgensen's charges last Saturday night against Los Angeles State, when they averaged 65 percent on total shots in the first half, he will probably need only one crack at the basket.

The Aztecs roll into San Luis Obispo to test the Mustangs and the new 4,000 seat gymnasium joyous over their league win over Long Beach State last week in their CCAA opener.

Rolling in with Coach Ziegenfuss's crew will be leading scorers Bernie Finlay and Jim Doherty. Finlay, in 18 games for the southerners, has scored 333 points for a 17.8 average. Doherty, who will be lost to the Aztecs in mid-season, has a total of 186 points, and a 14.3 average.

Against the Long Beach State 49'ers, Finlay was held to one field goal, but scored on 14 charity tosses, for a total of 16 points. While Finlay was held in check points, for the evening's high point Doherty managed to grab 25 honors.

Still talking about the 111-106 victory over the defending champion Diablos, Mustang head Coach Ed Jorgensen plans to use his two platoon system, which proved so successful last Saturday.

The Mustangs have been practicing in the new facility this week to get the feel of the floor. Jorgensen says, "The additional length (eight feet) proved a problem at first, but nothing we can't overcome. . . . We've been looking forward to tonight for some time."

Jorgensen indicated that he would start the same five this week. Starters and their points per game average will be Joe Ryceraw (12.5), and Mel McCormick (11.8), forwards; Bill Warmstead (8.4), center; Jim Clark (11.7), and Vic DiGiovanni (8.8), guards.

Splitting the evening's work load will be the alternate unit of Jim Webster (8.1) and Jerry Mhaekofurd (5.8), forwards; George Campbell (6.2), center; Dale Kuykendall (2.1), and Rally Rounsaville (5.7) guards.

Tomorrow night the Mustangs will be looking for a repeat performance of their early season 88-68 victory over the Westmont Warriors in Santa Barbara.

Dance Slated For Saturday Moves From Crandall To TCU

The Collegian Dance originally scheduled for Crandall Gym tomorrow night has been canceled due to recent slating of a boxing match for the gym. Heron and Palomar Dorns have agreed to sponsor a record dance from 9 to 12 in the TCU to fill in for this dance. Dan Hancock and Mickey Bergen are in charge. Chaperones are Mr. and Mrs. Nathan Chaney and Mr. and Mrs. Leo Rogers.

Heron and Palomar will sponsor a Collegian Dance on Saturday, February 20.

Spotlight on Coaches



Mustangs recently frequenting Crandall Gym, and adjacent phys-ed offices may have noticed an unfamiliar face among those numbered in the athletic staff. This new mentor, pleasant-countenanced, with crisp, gray hair, is Lawrence D. "Doc" Ricker, long-time athletic instructor and trainer at the University of Akron (Ohio). He recently joined the Cal Poly coaching staff, replacing James Jensen who is currently on sabbatical leave.

"They say when birth starts, death begins," Ricker opined in the fall of 1955 when he became Akron U. trainer, completing a cycle that began in 1924 when he joined the Akron staff as assistant football and basketball coach.

He started Akron's swimming and wrestling in '26, golf and tennis in '30, crosscountry in '31, softball in '33, and baseball in '34. Ricker minimized the part he played. "I merely tried to interest myself in boys who weren't football and basketball players," he says.

Actually he coached, and in some instances, inspired them. In swimming for example, one of his pupils, Andy Fela, became national interscholastic backstroke champion. One of his former baseball proteges is a fellow named Gene Woodling, former New York Yankee outfielder.

Ricker transferred his college credits to Akron U. and was graduated with a bachelor's degree in '27. He subsequently received a master's degree in education from the municipal university.

"I admit to being 32," says Ricker, who saw World War I service and has crowded several careers into his busy lifetime, and will embark on the latest chapter in the "Ricker Story", taking his enthusiasm and energy into his new assignment at Cal Poly, while leaving tap roots in Akron, his home for 35 years.

Unbeaten Matmen Head North For Busy Weekend

Jumping into action on a fast and furious note, Coach Sheldon Harden's Mustang Matmen, fresh from a 28-4 win over Adams State of Alamosa, Col., attack four opponents in three days over the weekend.

After a match with the Stanford Indians yesterday, the Mustangs meet two of their roughest opponents today, in the form of San Jose State at 1 P.M. and the University of California Golden Bears on the Berkeley Campus at 9:30 P.M.

Bernia State, 177 pound grappler will strengthen the Spartan mat team, which will probably be looking for their second Mustang hide in as many years.

The always-strong California Bears will feature Cal Hoffman, 177 pounder, and Dick Machado, talented 147 pounder, to bolster their squad. Machado is the brother of former Mustang wrestler Bob Machado.

Tomorrow finds the Mustangs invading Chico State, meeting the Wildcats on the last leg of their northern venture.

Harden will accompany a squad composed of Howie Bryant, 128; Jim Root, 180; Frank Garcia, 127; Hank Lomax, 147; G.W. Wingo, 157; Ben Paz or John Mills, 167; Dave Dixon, 177; and Ken Roberts, Heavyweight. Roberts, formerly of Orange Coast College, will fill in for the injured former PCL champ, Pat Lovell, who is benched with an injured rib.

Mustang Boxers Meet Swabs Tomorrow Night in Crandall Gym

Coach Tom Lee's Mustang boxers have opened many seasons against formidable opponents, but tomorrow night at 8 P.M. Crandall Gymnasium will see the 1960 version of the Mustang Boxers trade punches with the United States Navy!

Featuring an enlarged 11-match card, the Mustangs will host a reportedly talented Twelfth Naval District squad, which just last Monday night left Reno, Nev., with a 5½-3½ score against the University of Nevada mittmen.

Faced with replacing last year's outstanding boxers, Walt Halley and Don Tensler, both foregoing their senior ring season for another opponent, the books, Lee is attempting to give a "fairly green squad" some action under fire, before heading for the collegiate ring wars.

The Mustang-Navy fight card shapes up as follows: 125 pounds: Darryl Houlemard, Cal Poly, vs. Jack Daniels, Mare Island; 125 pounds: Jerrold Gebbie, Cal Poly, vs. Sylvester Frison, Treasure Island; 132 pounds: Tim Wellman, Cal Poly, vs. Joel Thompson, Concord Naval Air Depot; 132 pounds: Don Tsark, Cal Poly, vs. Robert Johnson, Mare Island; 139 pounds: Freddie Martin, Cal Poly, vs. Billy Smith, Treasure Island; 147 pounds: Sam Marques, Cal Poly, vs. Wilbert Judge, Mare Island; 147 pounds: Fred Minas, Cal Poly, vs. James Hunter, Mare Island; 156 pounds: Jon Lindeman, Cal

Poly, vs. Chuck Pierce, Treasure Island; 165 pounds: Rudy Ramp, Cal Poly, vs. John Nash, Treasure Island; 165 pounds: Duane Keok, Cal Poly, vs. Robert Robertson, S.L. Shipyard; Heavyweight: Bill Bacchi, Cal Poly, vs. George Loshair, S.F. Shipyard.

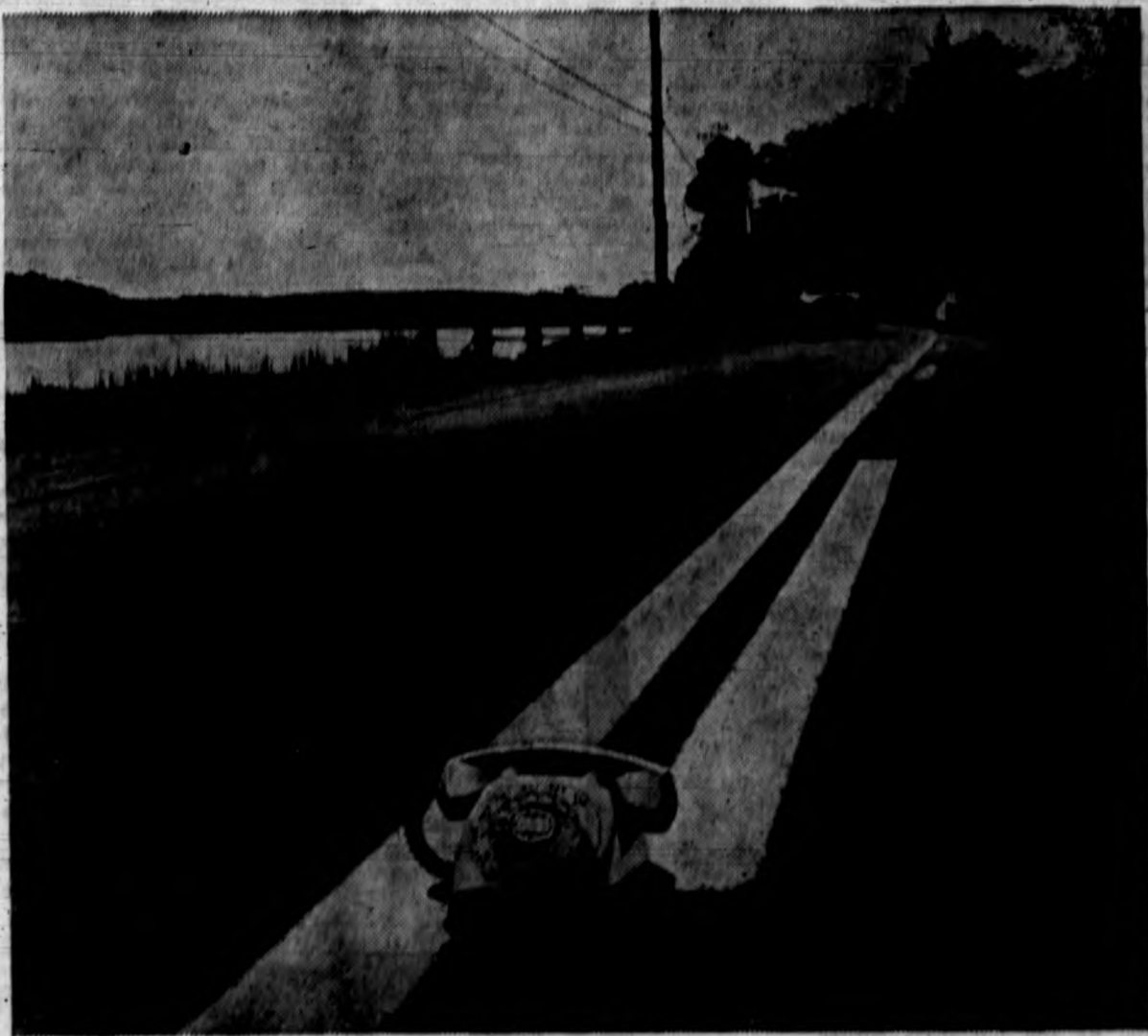
Sportshorts

Even though Coach Ed Jorgensen's Mustang eagles start another year of CCAA league action, and will, as usual, prove to be the number one attraction basketball-wise in these parts, another league, with plenty of aspiring scorers is ready to enter the scene—the Cal Poly Intramural Basketball League.

With an anticipated 60-70 teams expected to enter, the 1960 intramural league should prove to be one of the most successful programs of its type on the West Coast.

For the uninformed, intramural basketball captains or managers will meet today at noon in Crandall Gymnasium with Chairman Carlos Gonzales for an initial planning session.

Then, again, take for example the Cal Poly Staff basketball team affectionately called the "Cyclones" by local hecklers, implanted just a dribble and a jump-shot out of the San Luis Obispo City League cellar.



Phone for the road

These days more Americans are going places than ever before, and we're doing our best to keep up with them.

Our best is a new, ultracompact mobile telephone system provided by our subsidiary, Automatic Electric.

This development moves the telephone right in beside the driver. You can make calls—or get them—on the highway just as though you were sitting at home.

This mobile telephone service is yours to enjoy right now in many of our exchange areas. And it will soon be available in the other communities served by General Telephone in 31 states.

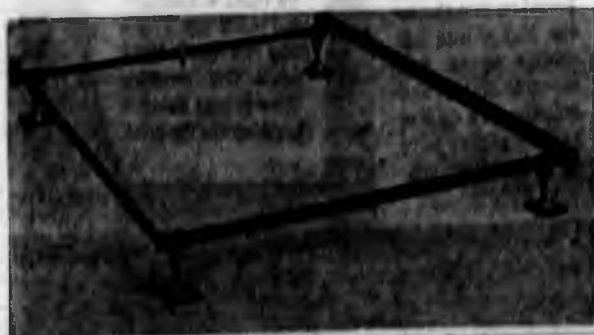
This is a typical example of how we use research—not only to meet today's communications needs, but to answer tomorrow's.

GENERAL



TELEPHONE & ELECTRONICS

SPECIAL OFFER



HOLLYWOOD BED FRAMES

Sturdy Construction — White Nylon Casters

January Special . . . \$5.95

Headquarters for Ready to Finish Furniture
DESKS — CHESTS OF DRAWERS — CHAIRS
Complete Lines of Paint and Finishing Materials

GLIDDEN PAINT CENTER

804 Foothill Blvd.

College Square Shopping Center

Service News For The Sweatin' Veteran

by Gale Eustad

Investigation by the Veterans Administration has disclosed that many veterans have been mistakenly advised into saving their educational entitlements under Public Law 550 for later use when they feel a greater need may arise. The VA's advice is "don't do it."

San Luis Obispo's VA office reports cases have been uncovered where veterans who were living at home or during periods of summer school, elected not to go to school under Public Law 550 in order that they might save the entitlement for graduate study. The local office recommends full use of the entitlement while the chance is available. This advice is based on records of the VA indicating many veterans have terminated their education before using or exhausting their entitlement. Considering that the veterans' entitlement must be used within an eight year period, it is sound advice to start drawing subsistence and continue as long as education is pursued.

The local office, 864 Santa Rosa St., reminds veterans that after the federal entitlement is exhausted they may draw on the \$1,000 State of California veterans' subsistence which may be received at the rate of \$80 per month.

Howard E. Barlow, officer-in-charge of the local VA office urges veterans to stress promptness and accuracy in filling out their monthly GI training reports. Late signing of reports will result in late payments, he says, and this is a habit with seven percent of the veterans according to statistics.

While signing the monthly report it is urged that a check be made of the information included on the card to prevent errors. Any change of address or in training status should be made known to the college veterans' representative immediately.

A report from the Los Angeles VA Information Service discloses that an estimated 480,000 California veterans who hold participating GI life insurance will receive \$23,619,500 in regular annual policy dividends during 1960.

Mort Webster, manager of the Los Angeles regional office said the dividends are primarily a refund to policy holders of part of their premium payments, and are made possible because the death rate among GI policyholders continues to be lower than the tables upon which the premiums were established by law.

Dividends will be paid to holders of both term and permanent plan participating NSLI and USGLI policies as soon as possible after the anniversary date of each policy during 1960.

Student Body Card Holders

Enter New Gym At NE Corner

All student body card holders will be admitted to the new gymnasium at the northeast corner entrance onto the main floor. This will facilitate easy access to the roasting section which will be on the east side.



Special Courtesy
to Poly Students
**We CASH
Your Checks**
1919 Merrie Street

Nepal Ag Visitor Studies Cal Poly Training Methods

Visiting on the Cal Poly campus until Jan. 22 is Dr. Kamala Bhagat Rajbhandary, Principal, Training School for Extension, Department of Agriculture of His Majesty's Government of Nepal, a kingdom in the Himalayas between India and Tibet.

Rajbhandary, who arrived in the United States last September, is visiting Cal Poly under the auspices of the International Cooperation Administration. He is studying the organization and administration of Cal Poly in relation to preparation of students for technical and teaching occupations in agriculture.

Objectives of Rajbhandary's visit are to study the Cal Poly philosophy as demonstrated by the "upside-down" curriculum, learn by doing and the earn-while-learning student project activities, in addition to seeing Cal Poly students in their various instructional programs.

Rajbhandary's itinerary includes visits to other colleges and universities as well as to meetings of organizations related to United States agriculture.

Comedy Stated For CU Movie

Tonight's College Union movie is the hilarious British comedy, "Lavender Hill Mob." The flick stars Alec Guinness and Stanley Holloway in the story of Mr. Holland, quiet, trusted supervisor of bullion at the bank. His dream is an ambitious one; to appropriate a million pounds in gold bars. He succeeds, but how to dispose of the gold is another matter.

The picture will be shown at 7 and 9 P.M. in the AC Auditorium. Dick Nute is projectionist this quarter, with Anton Atalla raking in the dimes.

After disastrous experiments by inventors in many other nations, Sweden produced the world's first safe safety-match in 1848.



THE LAST MILE? . . . The new Cal Poly gym which seats 4,000 persons also has facilities for 4,500 men in the locker room. With 500 lockers and 4,000 lockers the locker room is able to provide spaces for all men registered in physical education classes without crowding anybody.

The \$2,200,000 building used 200 tons of structural steel and 293 tons of reinforcing steel. It has 70,250 sq. ft. of space and folding bleachers which extend 85 ft. from the wall.

TV, Ping Pong, Magazines

Available At Fresh Lounge

Freshman Lounge, located in the field house by the Cal Poly baseball diamond, is open for the winter quarter according to managers Herman Farlough, Dick Robben, and Russ Croninger.

The lounge, a recreation center provides TV, reading, ping pong, and study activities. Equipment may be checked out from the managers from 7:00 A.M. to 10:30 P.M., Sunday through Friday.

Although named the Freshman Lounge it is available for use by upperclassmen.

Varsity teams in the intercollegiate sports offer opportunity for the more skilled in athletics.

El Mustang

California State Polytechnic College
(San Luis Obispo Campus)

Editor-in-Chief: Gale Eustad
Tuesday Editor: Phyllis Reed
Friday Editor: John Campbell
Sports Editor: Ben Roberts
Art Editor: Art Vinel
Business Manager: LaNora Steinberger
Advertising Manager: Ralph Hinds
Circulation Manager: Dave Kempt

Published twice weekly during the regular school year except holidays and examination periods by the Associated Students, California State Polytechnic College, San Luis Obispo, California. Printed by students majoring in Printing, Division of Engineering. Opinions expressed in this paper in signed editorials and articles are the views of the writers and do not necessarily represent the opinions of the staff, views of the Associated Students Body nor official opinions. Subscription price: \$2 per year in advance. Office: Rm. 31 Administration Building.

BARR'S



DRIVE-IN
RESTAURANT

'60 CHEVY! ONLY WAY YOU CAN BUY A CAR FOR LESS IS TO BUY A LOT LESS CAR!

THRIFTIEST 6 IN ANY FULL-SIZE CAR—Chevy's Hi-Thrift 6 is the '60 version of the engine that got 22.38 miles per gallon in the latest Mobilgas Economy Run—more than any other full-size car.

NEW ECONOMY TURBO-FIRE V6—Here's a V6 with the "6" Chevy's famous low—plus a new economy-boosted camshaft and other refinements that get up to 10% more miles on a gallon of regular.

EASIER-TO-LOAD LUGGAGE COMPARTMENT—The trunk lid is lower and the lid opening is more than a foot and a half wider than Chevy's nearest competitor's. There's over 20% more usable space! (Based on official data reported to the Automobile Manufacturers Association.)

MORE ROOM WHERE YOU WANT MORE ROOM—Chevy's trimmed down transmission tunnel (25% smaller) gives you more foot room. You also get more head and hip room than in any other 2- or 4-door sedan in the field.

WIDEST CHOICE OF POWER TRAMS—A choice of 24 engine-transmission teams in all—to satisfy the most finicky driving taste. There are seven engines with output all the way up to 336 h.p. and five slick-smooth transmissions.

EXTRA CONVENIENCES OF BODY BY FISHER—No other car in Chevy's field gives you crank-operated ventipanes, Safety Plus Glass all around and dozens of other Fisher Body refinements.

CHEVY SETS THE PACE WITH LOWER PRICES—All Bel Air and Impala V6's are lower priced, as are many options. Example: a Bel Air V6 sedan with Turboglide, de luxe heater and push-button radio lists at \$99.90 less for '60.

QUICKER STOPPING BRAKES—Long-lived bonded-lining brakes with larger front-wheel cylinders for '60 give you quicker, surer stops with less pedal pressure.

SOFTER, MORE SILENT RIDE—Chevy's the only leading low-priced car that gentles the bumps with coil springs at all four wheels. Noise and vibration are filtered to the vanishing point by new body mounts.

NOT CHANGE FOR CHANGE'S SAKE, BUT FOR YOURS—There's only one person we consider when we make a change—and that's you. That's why we don't think you'll find anything more to your liking at anything like the price.

The more you look around the more you'll find to convince you that no other low-priced car has so much to show for your money as this new Chevrolet. Here's the kind of styling sophistication and subtle detail that only Fisher Body craftsmanship can create. Here's the kind of Full Coil comfort that neither of the other two leading low-

priced cars—and only some of the smoothest riding higher priced ones—build into their suspension systems. Here's more room inside (where you want it) without an inch more outside (where you don't want it). And with all these advances Chevy has managed to hold the price line! Your dealer will be delighted to fill you in on all the facts.

See The Most There Chevy Show in color Sundays 9:00-10:00 PM on the Pat Boone Chevy Showroom weekly ABC-TV.

Now—fast delivery, favorable deals! See your local authorized Chevrolet dealer.