

Gala Festival Greet Thousands Today

EL Mustang

CALIFORNIA STATE POLYTECHNIC COLLEGE

VOL. XIX NO. 35

EL MUSTANG

Friday, April 25, 1958



COME TO THE FAIR . . . Lovely Poly Royal Queen Gale Manley and her "prince consort," Cal Poly boxing team star Don Adams, bespeak of the fun and frivolity of Poly Royal and its Friday night Carnival Midway, only one of the many special events in Cal Poly's annual celebration to education.

—Photo by Pam Keable

Queen Gale and Court Grace 1958 Campus Fair

Pert and sparkling Gale Manley chosen the most royal and beautiful of Cal Poly coeds, reigns over the 26th annual Poly Royal today. The Holtville lass, a physical education major, is the second of "home-grown" campus fair queens, who could apply that name only after the distaff students were admitted to Poly last year, for the first time in nearly three decades.

Gale and her court began Poly Royal last night, as they were treated to the "Queen's Reception." The annual event sponsored by the Student Wives Club was this year under the chairship of Mrs. Shirley Lawer.

Assisting Gale in official hostessing duties are her three princesses. They are: Robert Keable, physical education major from Concord; Deanna Larramendy, elementary education major from Ventura; and Mary Rich, home economics major from Glendale. The four girls have already met a heavy schedule of radio, television, and personal appearances since their election by the student body in February, a schedule which will reach a climax in intensity today and tomorrow.

This morning, their appearance at the opening ceremony in President McPhee's office will officially start the celebrations. From there, they will go on an exhibit tour at 10:30, a wagon tour at 11, and an exhibit tour at 11:30. This afternoon they will grace the rodeo grounds, where they will see the intercollegiate championship rodeo. Dinner will be served them at

the Skyroom of the south cafeteria.

Evening activities include appearances at the Jerry Gray concert at 6:45, the carnival and dance following.

Tomorrow's itinerary includes: 10 a.m., showmanship contests in the football stadium; 11:30, barbeque in Poly Grove; 12, Cal Poly Band concert in Poly Grove; 1, exhibit tour; 2, baseball game in the Poly diamond.

Dinner will be at the Motel Inn in San Luis Obispo. At 9:15, the girls will appear at the Western Dance in Crandall gym. At 10:30 comes the big moment, for then they will be the stars of the Coronation Ball.

Cal Poly went far and wide to obtain its Poly Royal queens before the advent of its own coeds. For the first few years after Poly Royal began in 1931, the queens were chosen from local San Luis Obispo girls. Then, as the school and its fair grew, it reached out for its queens, and every state college has cooperated in sending a queen to Cal Poly.

Gale Manley and her court will carry on this rich tradition, and promise to serve graciously as the symbols of Cal Poly 1958.

Rain or Shine, The Show Will Go On

Just in case old Jupiter Pluvius pulls a fast one and decides to let down some "spring showers" on campus during Poly Royal, the Poly Royal board of directors has considered several alternatives for events which might rain out. (Of course, we don't expect rain, but the weatherman predicted "liquid sunshine" for these parts the 25 and 26.)

The carnival will be held on State Street if the stadium is too wet. The carnival dance will move to the Veteran's Memorial on Grand Avenue if it is raining during dance time, and instead of four dances, there will be one long dance.

The Ladies riding contest Saturday morning will be held in the farm shop area if rained out of the stadium. Livestock judging will move to the animal husbandry judging pavillion if it rains.

An awful lot of "ifs," we admit. But at this college of practical learning, we believe in being prepared for every eventuality.

Wagon Tours of Campus Offered Free

Tours of the campus, with stops at major exhibits, can be made via wagons by foot-weary Poly Royal visitors.

The tractor-powered wagons are leaving from in front of the library every 15 minutes. Fare is free, courtesy of the sponsoring Agricultural Engineering majors.

Poly Royal Begins 2nd Quarter Century

In the spring, the Cal Poly student's fancy turns to Poly Royal, the gala "country fair on a college campus" to which he welcomes more than 20,000 visitors annually, to whom he shows the fruits of a year's academic labors, and for whom he plans a myriad of activities to thrill and entertain his guests.

Roy E. Simpson, Education Chief Is Honored Guest

One of the busiest people during our campus fair is this year's Poly Royal Guest of Honor, Dr. Roy E. Simpson, Superintendent of Public Instruction and State Director of Education.

Dr. Simpson will receive a student body life membership at the Poly Royal opening day ceremonies in President Julian McPhee's office and broadcast to students and guests over the bell tower public address system.

Besides addressing visitors and students during special meetings and the Saturday noon barbeque, Dr. Simpson's schedule includes a KSBY-TV interview Friday evening and short visits to departmental dinners with President McPhee.

Saturday morning Dr. Simpson will attend the Livestock Showmanship Contest and present some of the awards. He will attend the intercollegiate championship rodeo, the Agricultural Journalism Press Banquet, and complete his busy week end at the Coronation Ball.

Dr. Simpson has been in charge of California's public school system, from kindergarten through college, since 1945. He began his career in education in 1919 and has served boards of education, scholastic federations, and important state and federal committees.

This year, Poly Royal's 26th, the theme chosen by Superintendent Jim Truxell and his Poly Royal Board is particularly appropriate: "Education in Action." Actually, this is not new to Cal Poly, whose learn-by-doing philosophy is acknowledged to be as fine an educational philosophy yet derived has been in practice since the college's founding in 1901. These two days students in every individual department of the largest agricultural college, second largest engineering college, and fastest growing arts and sciences divisions in the west, have laid out educational and explanatory displays and activities to help the visitor to see and know Cal Poly.

OPENING CEREMONY

Poly Royal will open this morning at 10 a.m. with the opening ceremony in President Julian McPhee's office, and will be broadcast over the campus through the loudspeaker system by the audiovisual department. The approximately 20 minute program will be opened by Truxell, who will introduce President McPhee and Poly Royal's honor guest, Dr. Roy Simpson, Superintendent of Public Instruction for the State of California. Queens chairman Bruce Wilson, girls science major from San Luis Obispo, will introduce Queen Gale Manley and her court of three princesses.

Following the introductions, Chuck Cummings, student body president, will confer an honorary student body membership on Dr. Simpson. Marilyn Christensen, home economics major from Oak, is in charge of the ceremony.

CORONATION BALL

Poly Royal will close tomorrow night with the annual coronation ball, at which Gale Manley, Holtville physical education major, will be crowned. The ball will again be presented by the Engineering Council, according to dance chairman David Bartlett, architectural engineering major from San Luis Obispo.

The basic motif of the decorations, planned by Bartlett and carried out by cooperation of engineering division clubs, is "light and bubbly," Bartlett said. Basic coloring is provided by a baby blue and black backdrop on which light will be projected through variegated color transparent curtains. An additional element of alternate stripes of blue and white give a three-dimensional effect. An eight foot in diameter crown of many-colored balloons will be suspended from the ceiling of the Camp San Luis Obispo sports arena, site of the formal dance. Camp San Luis Obispo is located a mile and a half north of town on Hwy. One.

Cal Poly's own Collegians, only dance band in all of the eleven state colleges, will provide the music for the affair, which begins at 9 p.m. The 15-piece dance band has become traditional at Poly Royal Coronation Balls, having played for all of them.

Bids for the ball are on sale in the student body office. Adm. building basement, at \$2.00 per couple. They will also be sold at the door.

Western Dance Features Rodeo Trophy Awards

The annual Poly Royal Western Dance, the "agglies" answer to the formal coronation ball, will be presented tomorrow night in Crandall gym, sponsored by the Rodeo Club with Freeland Thorson, Weiser, Idaho, animal husbandry major, in charge.

Actually the western dance serves as a more fitting setting in which to present the trophies won in the two-day Intercollegiate Championship Rodeo. Besides the usual team and individual trophies, an all-around winner's trophy saddle will be represented for the first time.

Jeff Sparks will head the music-makers for evening's dancing, scheduled for from 9 to 1. Another highlight will be the appearance of Queen Gale Manley and her court at approximately 9:15 p.m.

Tickets are available in the AEB office for \$1 per couple, and at the door.

Tickets for Poly Royal events, including the Jerry Gray concert and Carnival dance on Friday and the Western dance and Coronation Ball on Saturday, are available in the Student Body office at the south end of the Administration Bldg. basement.

SPECIAL EVENTS

FRIDAY

- 10 a.m. Opening Ceremony
- 2 p.m. Intercollegiate Rodeo
- 8 p.m. Baseball—Cal Poly vs. Long Beach Navy
- 8:15 p.m. Carnival Dance Sessions Start

SATURDAY

- 11 a.m. Barbeque of the Dons
- 12:30 p.m. Baseball—Cal Poly vs. Fresno State
- 2 p.m. Intercollegiate Rodeo
- 9 p.m. Western Dance
- 9 p.m. Coronation Ball
- 10:30 p.m. Coronation Ceremony

See Page Two for Complete Schedule

Schedule of Events

FRIDAY MORNING

- 8:00 Horse Show, Bud Collett arena.
9:00 All Exhibits Open.
10:00 Opening Ceremony in President McPhee's Office.
10:00 Math Contest Registration, Library Periodical room.
11:00 Math Contest, Part I, Library Periodical room.
12:00 CSTA - CFFA luncheon for Dr. Roy Simpson, TCU.

FRIDAY AFTERNOON

- 1:30 Math Contest, Part II, Library Periodical room.
2:00 Intercollegiate Rodeo, Bud Collett arena.
3:00 Baseball—Cal Poly vs. Long Beach Navy, Mustang diamond
3:30 Math Contest, presentation of awards, Library.
5:00 Carnival Opens, Mustang Stadium.

FRIDAY EVENING

- 6:30 Agricultural Engineering Banquet, Veteran's Memorial Bldg., S.L.O.
6:45 Jerry Gray and his Band of Today, Concert, Gym
8:15 First Session, Carnival Dance, Gym.
9:15 Second Session, Carnival Dance, Gym.
10:15 Third Session, Carnival Dance, Gym.
11:15 Fourth Session, Carnival Dance, Gym.

SATURDAY MORNING

- 7:30 Air Conditioning Dept. Alumni Breakfast, Motel Inn.
8:30 Animal Husbandry Showmanship Contests, Football Stadium.
8:30 Dairy Husbandry Showmanship Contests, Dairy Pavilion.
9:00 All Exhibits Open.
10:00 Livestock Judging Contests, Football Stadium.
10:30 Ladies Nail Driving Contest, Football Stadium.
11:00 Barbecue of the Dons, Poly Grove and North Cafeteria.
11:30 Aqua Show, Natatorium.
12:00 Band Concert, Poly Grove.

SATURDAY AFTERNOON

- 12:30 Baseball, Cal Poly vs. Fresno, Mustang diamond.
12:30 Alumni Wife's Luncheon, Anderson Hotel.
2:00 Intercollegiate Rodeo, Bud Collett arena.
2:30 Aqua Show, Natatorium.
3:00 Architectural Engineering Alumni Meeting, Arch. C

SATURDAY EVENING

- 6:00 Printing Engineering Banquet, Anderson Hotel
6:30 AIA Awards Banquet, Vet's Memorial Bldg.
6:30 Electrical Engineering Alumni Dinner, Motel Inn
6:30 Sixth Annual California Agricultural Press Banquet, Edna Farm Center
9:00 Coronation Ball, Sports Arena, Camp S.L.O.
10:30 Poly Royal Queen Coronation

Nurseries, Lounges Among Campus' Service Centers

Day nurseries for the youngsters and relaxation and refreshment centers for the grown-ups are among the services being offered to Poly Royal visitors. Following is a list of some of these services:

DAY NURSERIES

Student Wives: On Saturday from 9 a.m. to 5 p.m. the Student Wives Club will be in charge of a nursery in room 311, second floor of the administration building. Mothers will be responsible for the feeding of their children. Children from 3 to 6 years are invited.

Home Economics Dept.: Students in this department are maintaining a baby sitting service from 9 a.m. to 5 p.m. both Friday and Saturday, in Cubicle X, for children between the ages of 3 and 6. Facilities provide for a maximum of 30 children at any one time. Mothers will be responsible for feeding.

RELAXATION

Temporary College Union: The TCU, located above the Architectural Engineering unit, offers comfortable chairs and music. The canteen is open.

Library: The browsing room off the library's main reading room offers comfortable chairs and reading material.

REFRESHMENTS

English Dept.: Free coffee to visitors to the English department's exhibit in rooms 118 A-B-C of the library.

Social Science Dept.: Free coffee at the department's display in Science D-37, while visitors vote on the California primary elections.

Oswald's Booth: Located in front of the library, this booth offers ice cream, pop, candy, cigarettes, hot dogs, and hot coffee.

El Mustang

California State Polytechnic College
(San Luis Obispo Campus)

Editor: Pat Keeble
Poly Royal Edition
Feature Editor: Jeanette Bradley
Published twice weekly during the school year except holidays and examination periods by the Associated Students, California State Polytechnic College, San Luis Obispo, California. Printed by students majoring in Printing Engineering Division. The opinions expressed in this paper in signed editorials and articles are the views of the writers and do not necessarily represent the opinions of the staff, views of the Associated Student Body, nor official opinions. Subscription price \$2.00 per year in advance. Office, Room 11, Administration Building.

Ed's Take Out

featuring delicious

Hamburgers

Hot Dogs

Cheeseburgers

Ed's Special 1/4 lb. Big Burger 35c

from our new

Pizza Department

● Mushroom

● Anchovy

● Sausage

● Cheese

● Pepperoni

Served

in 2

Sizes

Corner California & Monterey

Gala Fairway Opens Tonight In Colorful Stadium Pageant

Taste-tempting delights and games galore will mark the Poly Royal carnival, set to start at 6:30 tonight in the north end of the Mustang stadium.

Bill of fare at the various concession booths includes barbecued beef and punch, cotton candy, coffee and doughnuts, tacos and soft drinks, shish-kabab, and the old reliable standbys, hotdogs and hamburgers.

The gala "Funway" with its rows of glittering lights will play host to thousands of campus visitors as they try their luck at games of skill such as the electric roulette wheel, throwing baseballs, dunking students, garter throw, skill fishing, miniature golf and many others.

Prizes offered will range from hams and hams to stuffed teddy bears, according to Carnival Chairman Ed McGraw. Concessions are sponsored by departmental clubs, living groups and other groups on campus. The carnival will wind up at midnight, and then the work will really begin for the busy carnival crew. All evidence of the carnival must be removed before day-break, to ready the field for the full slate of events scheduled for Saturday morning.

The full list of sponsors follows: Bar-B-Q and punch, Hui O' Hawaii; cotton candy, Judges House; 7-Up trailer, Farm Center; coffee and doughnuts, Ski Club; shishkabab, Arab Club; popcorn and cider, Air Conditioning Club; tacos and soft drinks, Desserts.

Electric roulette wheel, Institute of Radio Engineers; Cal Poly souvenirs, Solis Club; ham and bacon wheel, American Institute of Architects; ham and bacon wheel, Arts and Sciences Council; baseball throw, Industrial Engineers; dunking students, Farm Management; baseball throw, Heron Hall.

Shooting at cans, Young Farmers; add-on up darts, Alpha Phi Omega; ring the bottle, Boots and Spurs; dime pitch, Leo Lechner; garter throw, Jespersen Hall; penny pitch, Crops Club; pitch poker chips, Mat Pica Pi; dart throw, Social Science Club; duck pin and bowling ball, Institute of Aeronautical Sciences.

Skilled fishing, Math Club; strength tester, Woolgrowers; hole-in-one golf, Tau Sigma; nail driving, Women's Athletic Assn.; bingo, Gamma Pi Delta; baseball throw, Poly Chi. Ticket sales will be coordinated by the Newman Club.

Cal Poly alumni will still have a hard time adjusting to the "new" conditions on campus, for few find it easy to believe that the college is now coeducational. This is the second year the girls have been enrolled at the formerly all-male campus. Three dormitories, Heron, Jespersen, and Chase Hall, were converted to help accommodate the 800 girls now attending Cal Poly. The Kellogg-Voorhis campus will open its doors to coeds in 1959.

TCU Offers Lounge To Weary Visitors

A restful atmosphere, comfy chairs, and soft music will greet the walk-weary Poly Royal visitor at the Temporary College Union lounge, next to Hillcrest dormitory, and just above the Architectural Engineering unit.

To refresh visitors as they relax, coffee and donuts are available at the TCU's canteen. For viewing, a photo display of 52 college unions in the National Association add to the decoration of some beautiful plants.

College Union personnel are on hand to help with general Poly Royal information, directions, or to tell about Cal Poly's College Union activity program and hopes for future expansion in a suitable building.

PORTABLE TYPEWRITERS

Royal, Smith-Corona, Remington, Olivetti

Terms as Low as \$1.50 Per Week

EXPERT REPAIR SERVICE

RENTALS

NILSON OFFICE EQUIPMENT

OUR 20th YEAR IN SAN LUIS OBISPO

690 Higuera St.

Liberty 3-7347

WELCOME

to the

26th

ANNIVERSARY

of

POLY ROYAL

"Everything Musical"

Brown's Music Store

717 Higuera



Let our experts flatter your features
With an exciting hair-do created especially
for you! Results? A thrilling new
look of beauty!

Hibbard Hair Fashions

Kay and John Hibbard

1435 Monterey Street

LI 3-5927

San Luis Obispo

'Band of Today' Plays Concert, Dance Tonight

The most danceable music in the world will be the feature attraction of the Carnival dance tonight in Crandall gym.

Radio-television recording star Jerry Gray and his fifteen piece "Band of Today" will hold sway on the bandstand for the evening dance. Gray, best remembered for his arrangements for the late, great, Glen Miller, comes to Poly from the Hollywood Palladium, where his outfit is playing their tenth engagement.

Gray has made coast to coast appearances at famous night spots such as the Moulin Rouge in Hollywood, Phoenix Silver-Spur, and Frank Dalley's Meadowbrook in New Jersey. His television and radio credits include the Saturday Night Revue, Cavalcade of Bands, Truth or Consequences, Phillip Morris Show, and Campbell Soup's Club 15.

He has made disks for Capitol, Mercury, Columbia, Decca, and Liberty, as well as three film musicals for Universal Pictures. Gray's own compositions include such popular hits as String of Pearls, Pennsylvania 6-6000, Anvil Chorus, and American Patrol.

There will be four dances during the evening, according to Dick Wilson, director of special events. Dance starting times are 8:15, 9:15, 10:15, and 11:15 p.m. Charge per dance will be seventy cents per couple, forty cents for a single.

Dance music devotees are invited to attend the Jerry Gray concert, at 7 p.m. in Crandall Gym. Gray will direct the orchestra in a number of novelty pieces and dance tunes. Concert tickets are fifty cents.

Sirloin or Chicken At 'Don's Barbecue'

Once again Californians can feast on a "Barbecue of the Dons," served in the Old Spanish tradition. The barbecue will be served tomorrow from 11 a.m. to 2 p.m. in both Poly Grove and the North Cafeteria.

John Gager, barbecue chairman announces a price of \$1.65 per plate for the meal, which includes the following:

Top Sirloin steak or broiled chicken (your choice), chili beans, tossed green salad, relish dish, ice cream, coffee or milk.

Relaxation Feature of Library Exhibit

The Cal Poly Dexter Memorial Library is featuring exhibits in three areas, highlighted by a reading area in the browsing room.

A special Poly Royal directory in the foyer lists exhibits and events taking place in the library building.

Comfortable chairs and background music set the atmosphere. A special "Education in Action" exhibit has been designed by Joyce Arkella of the Order department, and features an abstract world, and a floor-to ceiling array of book jackets. New Yorkers and cartoon books have been placed for enjoyment of those seeking relaxation.

The south end of the reading room features table displays of the curriculum library, periodicals and documents divisions and the Cal Poly Family album, with pictures of yesteryear. Past copies of El Mustang and El Rodeo will be given to alumni as long as they last.

Poly Royal Board Gambles On Rain

Members of the Poly Royal Board at Cal Poly are taking out their slide-rules and trying to calculate the odds of a sunny day on April 25 and 26.

The Board voted not only to insure the two-day festival against rain, but to raise the policy \$1,000 over last year's. The policy covers a seven-hour period today and three hours tomorrow. To collect, it must rain 1/80 of an inch during one of these periods.

"I'm not saying it won't rain," said Harry J. Morris, a representative of Hartford Insurance company, "but we're willing to gamble \$22 to one it won't rain between the time limits."

With this year's cloudy skies and wet weather, the collegians might have an edge on the insurance men, but so far the insurance company has only paid once, in 1955, records show.

"We're betting the premium against \$5,000 that it rains," said Carl Beck, advisor to the Poly Royal Board. "We've had the problem of rain for the last 25 years and we always will, as long as we live in California."

Band Concert On Schedule For Barbecue

Forty members of Cal Poly's band will present an hour-long concert tomorrow during the barbecue in Poly grove. The band plays under the direction of Clarence Caughran, music instructor.

The purposes of the Music department are to give all musically inclined students an opportunity to take part in music activities on campus, and to provide those students interested in teaching with basic skills and techniques in music required for a general elementary credential.

The Music department includes the Men's Glee and Women's Glee clubs, which annually give the Spring Home Concert in April. The Men's Glee also takes a week long tour during spring vacation, having returned recently from the Los Angeles area, where it performed before schools and community groups.

Another member of the Music department is the Collegians, only State college dance band in California. As mentioned elsewhere in this edition, the Collegians will play tomorrow night's Coronation Ball.

Horsemen Set Morning Show

The annual Poly Royal horse show began at 8 a.m. today in Bud Collett arena, with four classes scheduled, according to Manager Karla Jean Kaufman, Santa Maria.

Classes are cutting horse, stock horse, hackamore horse, and pleasure horse categories, with the first three involving working cattle. Hutch Hutchinson, Sacramento, will judge. The show is sponsored by the Cal Poly Cutting and Reining Horse club.

The show is one of the club's activities designed to promote good horsemanship and activities for students interested in horses. The club also sponsors the girls' barrel racing team which competes against other college teams.



NO HAYSEED HOSTESSES HERE! These luscious lovelies aren't going to be caught with any barnyard mannerisms when they serve Cal Poly's 20,000 visitors during the "country fair on a college campus." Practicing for their roles as hostesses in the Osendall's refreshment booth are, left to right, Mona Steelman, Sheila Varian, and Chris Bays. The booth is located directly in front of the library, and serves ice cream, pop, candy, cigarettes, hot dogs, and hot coffee. It will be open for business during both days of the campus celebration.

Sport Car Club Sets Concours Display

A Concours d'Elegance highlights the Cal Poly Sports Car Club's Poly Royal display, announces Sid Fleisher, chairman of the club's Poly Royal committee.

The sports car show is located on the parking lot south of the Mechanical Engineering Lab. It will be judged tomorrow by spectators on a simplified judging scale.

Problems, Solutions Shown by Math

"Mathematical problems and how they are solved" is the theme of the Mathematics department's Poly Royal exhibit, located on the main floor of the Agricultural Engineering building, room 108.

Included in the exhibit is a display depicting the importance of mathematics and the many fields in which it is necessary.

Math majors will be kept busy during Poly Royal as monitors and tabulators of the annual high school math contest sponsored by the department.

The Math Club is also sponsoring a booth a tonight's carnival, featuring a chance to prove the player's skill at fishing.

"As math majors, Poly graduates are capable of working on computer teams, one of the newest fields. As we turn out more and more computer solutions in business and industry, there have to be more computer teams that set up the problems before they can be solved," says Dr. Milo Whitson, department head.

Welcome

SOLVE your hobby problems

Here... **MARV'S** Hobby Shop

895 Higuera

POLY ROYAL
Guest

CARL KIRK EBY

Poly Jackets

Sweaters

Thrifty Shopper Stamps

We Don't Sell You Buy

We Don't Sell You Buy

CARL KIRK EBY

We Don't Sell You Buy

CARL KIRK EBY

Poly Jackets

Sweaters

Thrifty Shopper Stamps

Only Quality Clothes

815 Higuera Street

NEW Portable Typewriters

USED Office Machines

1 Day Service

Special Tune up

Rates To Students

Authorized Underwood Distributor

MARSHALL

Business Machines

1453 Monterey St.

CONGRATULATIONS

TO

CAL POLY

On Their 26th Anniversary

Freds Auto Electric

Monterey & California

Phone LI 3-3821

Welcome to the Annual

26th Poly Royal

5 Minute Car Wash

SAVE TIME

SAVE MONEY

\$1.50

Open Sunday

9 a. m. to 1 p. m.

1023 MARSH

BOB'S CAR WASH

Next to Mustang Service

Princess Deanna

ROYAL SERVING . . . Poly Royal Princess Deanna Larramendy practices her hostessing manners as she serves from a soup tureen that was used by Cal Poly's first coeds, in the era of the "roaring 20's." The dish is part of a group of beautiful and priceless dishes, soup tureens, cups, bowls, and other pieces found in a storeroom recently and now to be seen as part of the Home Economics department's Poly Royal display. Deanna, an elementary education major from Ventura, is one of three lovely princesses to grace the campus during Poly Royal.

POLY ROYAL SPECIAL

For The Beach or Spring-time Play

SPECIAL

SEA & SKI
Beach Umbrellas
ONLY \$9.95

Beach Backs . . .
\$1.95



Surf Riders **\$4.95**

Inflatable Animals **98c up**

Air Mattress **\$3.95 up**

Picnic Baskets **\$3.95 up**

Camp Stoves **\$1.35 up**

WESTERN AUTO

685 HIGUERA ST.

**BAR-B-QUE
SPARE RIBS**
with
Salad and Garlic Toast
Lean and Meaty

FOR THAT
POLY ROYAL
TREAT

SPAGHETTI
with
Salad and Garlic Toast
TOPPED WITH
FRESH PARMESON
CHEESE

Short Orders

**T-BONE
GRILL**

1041 HIGUERA
LI 3-9803
OPEN 4:00 p.m. - 4:00 a.m.

REMEMBER
Breakfast Orders
At Any Time

STEAKS

From Our
Broiler

Served as you
Like them

To all our old friends and
customers, BLACKIE and
OLE are back at the New
T-BONE GRILL.
1041 Higuera

PIZZA

serving 5
different
kinds

CLIP A COUPON!

AND

SAVE AT YOUR FRIENDLY

HAWTHORNE MARKET

2161 Broad St.

896 Foothill

Limit one per family

HAWTHORNE MARKETS

Birds Eye Quick Frozen
Green Peas

WITH THIS COUPON ONLY

5¢ PKG

Good through May 3, 1958

Limit one per family

HAWTHORNE MARKETS

Birds Eye Potato Patties
12 oz. pkg.

WITH THIS COUPON ONLY

5¢ PKG

Good through May 3, 1958

Limit one per family

HAWTHORNE MARKETS

Birds Eye Frying Chicken Breast
Terrific Value

WITH THIS COUPON ONLY

5¢ PKG

Good through May 3, 1958

Hawthorne Market

2161 Broad St.

896 Foothill

Navy Nine, Fresno Bulldogs Here For Poly Royal Tilts

Poly Royal week-end finds the Mustang baseballers hosting Long Beach Navy in a 3 P.M. Friday tilt, and the Fresno State Bulldogs, Saturday, in a 12:30 o'clock COAA doubleheader.

The horsehiders of Coach Bill Hicks are in the midst of a gloomy season win-wise, but have the talent, which is "a year, or probably two, away" from being able to go through a winning year.

With the exception of junior catcher—a converted outfielder—Bob Mannini and outfielder Lew Gentry, a 1957 all-league outfield pick, the remainder of the club is listed as freshmen and sophomores. Experience, obviously, is thin.

Hicks' mound staff—Jim Newkirk, Steve Whitesides, Dick Simmons, Gene Callan, and Larry Mitchell—has exactly zero years college mound experience. The fact that each has at least two seasons ahead looks promising.

Outliers for this week-end's outings have not been named, but Poly's starting nine—minus a chucker—shapers up as follows: Willis Hill, centerfield; Lew Gentry, right field; Ray Kunse, left field; Greg Briggs, first base; Joe Tomooka, second base; Dale Rogers, third base; Dan Shaw, shortstop; and Mannini, catcher.

Fresno has title hopes in the COAA race this spring, and must register victories to match strike with favored—and defending champion—San Diego State.

Splashers Entertain Gauchos Friday

Back from a strong showing in last week's Davis Relays, Poly's varsity swimmers entertain the UC, Santa Barbara College Gauchos Friday in a 3 P.M. Poly Royal feature.

Having one of its finest years in recent seasons, the splash squad of Coach Dick Anderson should rate as favorites to cop the meet. A previous match between the two teams was cancelled.

Next week-end will find the locals in Fresno to participate in State College Swim Meet. The Andersonmen should rank near the top-seeded competition.

Mustang Golfers In Northern Meet

Cal Poly's contribution to the golfing world, Tom McFadden, will rank as one of the favorites in the sixth annual Northern California Intercollegiate Championships, scheduled for today and tomorrow at Santa Orus.

In last year's outing, McFadden advanced to the semi-finals before being eliminated. Mustang mentor Charles Hanks will take his Poly varsity stickmen to the affair. The members are Dick Little, Owen Silke, Dick Callan, Dick Wilson, and Dan Prochnow.

Cowboys 'Cinched Up' For Rodeo

Cal Poly's rodeo team, the top collegiate squad on the West Coast, is eyeing the championship of the 1958 Poly Royal Rodeo which will be staged today and tomorrow afternoons at 2 o'clock in the Bud Collett Arena.

Tommie Brown of Wasco, president of the Poly Rodeo Club and chairman of the '58 affair, reports several other collegiate cowboy crews will be participating in the two-day outing. Cal Poly of Pomona, Oregon Technical Institute, Arizona State at Tempe, Fresno State College, and Pierce Junior College are definite entries and other participants are expected to arrive.

Coach Roy Harris' six reasons for anticipating a victory this week-end are Greg Ward, Riley Freeman, Fred Gilbert, Larry Fanning, Jack Roddy, and Marv Roberts. Roberts is a two-time national intercollegiate bulldogging champion.

Trophies will be presented at the rodeo dance Saturday night in Crandall gymnasium. Starting time is set for 8 o'clock. A trophy saddle is to be presented to the performer named all-round-cowboy.

Featured events of the Poly Royal rodeo include such items as saddle and bareback bronc riding, bulldogging, bullriding, calf roping, ribbon roping and a category for women participants.

Welcome To The 26th Annual Poly Royal

- familiar to students old and new

A MUST DURING YOUR VISIT

- SPECIAL POLY ROYAL MEALS FEATURED

BEE HIVE CAFE

CORNER OF MORRO AND MONTEREY

Big Green Starts Twenty-Day Spring Drills April 30

A 20-day Spring practice session for Mustang gridders will commence on April 30 with equipment being issued April 28-29, Coach "Silver Fox" Hughes announced Thursday. The Mustang mentor has hopes of filling 100 suits with both varsity and frosh personnel.

A top grid schedule is on tap for the local squad again this year which is highlighted by the appearance of Montana State and Pacific University of Oregon.

April 28, veterans will receive their equipment while the newcomers will be issued their suits on the 29th.

Practice sessions will start at 4:30 and will run until 6:00 p.m. Several JC transfers will be on the roster this year to help make what could be a perfect season.

Bakersfield College is the biggest donator to the local squad sending six players. Bakersfield won the Potato Bowl tilt over top-seeded Boise JC last year.

Twenty-five returnees will greet Hughes on the 29th, most of whom are linemen.

Little All Coast quarterback Bobby Beathard heads the list of three returning quarterbacks, but Hughes reports that his collection of running backs falls short of recent years.

Fresno State and San Jose State both absorbed losses from the Big Green last season and both squads were bitter about it. These two clubs, along with Montana State, will comprise the local's toughest competition for the '58 campaign.

Mr. and Mrs. Harry Lacterman
Proprietors

Lacterman's

"Juniors" and Women's Apparel - Furs

Exclusive..home
for..several
nationally accepted
brands of junior
sportswear,..casual
and..dressy attire
for..the co-ed

Phone LI 3-4936

728 Higuera Street
San Luis Obispo, California

THE WHOLE TOWN'S TALKIN'

about

Clarence
Brown's

diamond rings

CAL POLY
YOUR CREDIT
IS GOOD
AT
CLARENCE
BROWN'S
NO
CO-SIGNER
NEEDED



Congratulations

on your
26th annual

Poly Royal

A MUSTANG BOOSTER

CLARENCE BROWN

San Luis Obispo's Leading Credit Jeweler

Open Thurs.

11-9 P.M.

LI 3-5648

862 Higuera

CAL POLY'S GIFT HEADQUARTERS

Why The 'Moon'



THE WHY BEHIND SATELLITES—Physical Science students Allen Cook of Fellows, Calif., center, and John Peters, Riverside, right, show Dr. Arthur Rosen of the Physical Science faculty their Poly Royal project—a demonstration of the fundamental hows and whys ruling the motions of artificial satellites. This is perhaps the highlight of an extensive Physical Science department display, located in the D and E wings of the Science building. —Photo by Grill

Physical Sciences Exhibit Satellite

A demonstration of fundamental physics via an artificial satellite is on exhibit by Physical Science department majors in the E section of the science building.

"Students are demonstrating such projects as an atomic roulette wheel, showing the laws of probability by use of a geiger counter and scaler," says Dr. Hewitt Wight, instructor in the Physical Sciences department.

Other majors are demonstrating the principles of glass blowing. Also on display is an ammonia fountain which causes water to flow up hill.

Besides these exhibitions by majors there are static displays of equipment and processes used in senior projects and advanced classes in chemistry.

Students in charge are Lee Magur, department representative to Poly Royal board; Jerry Houllie, chemistry display chairman; Al Cook, physics display chairman; and Jack Prentice, ag. chemistry display chairman.

The occupational objectives of the Physical Sciences department are to qualify students for entry into positions in civil service, industry, and agriculture, and to help prepare secondary teachers of the physical sciences.

Positions for which students in the agricultural chemistry program may qualify include vitamin assay biochemist, food and drug chemist, feed analyst, meat technologist, fertilizer chemist, insecticide formulator, insecticide residue analyst, and public health chemist.

Teaching Majors Sponsor Luncheon For Top Educator

Two groups of future teachers are combining their activities today to sponsor a special luncheon for Dr. Roy E. Simpson, Superintendent of Public Instruction in the state of California, and Poly Royal's guest of honor.

The California Student Teachers Assn. and the Collegiate Future Farmers of America, whose members specialize in vocational agricultural teaching, are giving the luncheon at noon in the Temporary College Union. Attendance is limited to those who have bought tickets from Education department members.

CSTA will also end its scholarship drive during Poly Royal. A typewriter as first prize and a \$10 merchandise order from El Corral as second prize will be awarded to lucky ticket holders tonight at the Jerry Gray concert.

Both CSTA and CFFA are departmental clubs (For departmental activities, see story on page 15 of this edition).

Water Ballet On Tap For PE Majors Show

Cool Physical Education majors take over the spotlight in that department for Poly Royal, with an aqua show featuring synchronized swimming to be given twice tomorrow.

Christine Bays, PE major from Vallejo, is in charge of the show, to be staged at 11 a.m. and 8:30 p.m. in the Natatorium. There will be team, quartet, duet, and solo routines.

The Woman's Athletic Assn. will also be on hand at the carnival tonight, with a nail hitting booth. Prizes will be awarded to those who hit the nail into a plank with three successive blows, according to Chairman Susan Atkins of Santa Maria, and her assistant, Lis Rayl, of Van Nuys.

The department display includes a gallery on competitive athletics, intramural sports and trophies, community recreation, and kinesiology, as well as an exhibit of curriculum requirements. Jerry Smith is in charge, and the display is located in the gym annex.

First Straw Vote On State Primary May Show Trend

Guests at Poly Royal have an unusual opportunity to cast a straw vote for their favorite gubernatorial and other candidates of the forthcoming California Primaries on a late model electronic automatic vote tabulating machine, as part of the Social Science department's Poly Royal display, according to Bob Adolph, chairman.

"This will be the first such vote taken in the state," Adolph said, "and we hope that enough people will take advantage of it so that we can call it a valid indication of the June primary elections."

The machine, on loan from San Luis Obispo county, is located in Science D-27, where free coffee is also being served. Outstanding senior theses are also on display.

Cal Poly's Social Science major is significant in that it includes all phases of the field, and is not broken into specialized branches. One of the main objectives of the department is to prepare its graduates for entry into all phases of local, state and federal Civil Service employment.

Many students serve an internship at the Men's Colony in Atascadero as part of a program to prepare them for work in the field of correction upon graduation.

Secondary school teaching is also a major feature of this department, along with a wide variety of other

'Living' Display Highlight Show Of Biology Majors

Live animals highlight educational displays in five major groups of life in the Biological Sciences department's Poly Royal exhibit.

In zoology, a collection of sea-shore animals of San Luis Obispo is displayed in C-11. The collection contains living animals in aquaria. A wild life exhibit in C-20 includes an extensive collection of living snakes and reptiles of the county. The collection has been assembled by students in the Vertebrate Field Zoology classes.

Actual photographs of bacteria highlight another display, on bacteriology, in Science B-4. Taken by Bio. Sci. students Mike McRae, the pictorial exhibit supplements a demonstration of microscopes on the same subject.

The outstanding butterfly collection of Mrs. Grace Clement of Atascadero is featured in the entomology exhibit in C-15. Also included here is a display of termite destruction.

Rounding out the display is the flower exhibit in B-7. Hydroponics, illustrating mineral deficiencies in plants can also be seen here.

occupations which lead to jobs in industry, personnel work, sales, and junior management.

Another feature of the Social Science display is a "Charlie McCarthy" type robot, which reveals what social scientists and engineers foresee in the future.

—The Last Word In Hair Styling—

The Helen Rose Salon

THEDA DUART Prop.
Phone LI 3-6201

1112 Garden Street
San Luis Obispo

For The BEST

in
Baseball
and
Fishing
Equipment



J. C. HILL

Sporting Goods
1039 Chorro

Beno's

Welcomes You To The
28th Annual Poly Royal

LEVI WESTERN SHIRTS

Solids, Stripes, Plaids
Retail 4.95 — 7.95

LEVI

Lee

BOOTS

Western Wellington

WESTERN HATS

and Ties

IVY POLISHED COTTON PANTS

Solids, Stripes

SPORT SHIRTS

Short Sleeve-Terrific
Selection

JACKETS

Polished Cotton

NYLON JACKETS

Feather weight, unlined,
Navy, Charcoal, Tan
7.95

**BIGGEST SELECTION
OF WESTERN
SHIRTS IN
TOWN**

**FULL SELECTION
OF DRESS
SLACKS AND
SPORT COATS**

1018 Morro St.

Bert Franklin

Salutes

26th

annual

POLY ROYAL

- Radiator Repair
- Mufflers
- Wheel Balancing

Monterey at Toro
San Luis Obispo

Newest Branch Lists Exhibits, Services

Arts and Sciences Division Offers Variety, Service

The Arts and Science Division has seen less Poly Royals than its two brother branches, but an ardent though smallish enrollment doesn't count this as a disadvantage in putting on a show for Poly Royal guests.

Headed by Dean Robert Kennedy, the division offers ten majors, each of which employs the college's learn-by-doing philosophy to the fullest extent. In addition, it is a service division for the entire student body, handling required classes in science, math, English, and humanities.

Each Arts and Science department is holding individual open house displays during Poly Royal. Two departmental events have become annual affairs. These are the Math department-sponsored high school math contest and the Agricultural Journalism department's state-wide agricultural press banquet. The math contest annually attracts more than 100 high school students from throughout the state, while the press banquet draws outstanding agricultural editors, publishers, newsmen, and other communications personnel.

Following are the outstanding features of each department's display, and locations.

Ag. Journalism: Adm. 21, Displays of student newspapers, advertising and public relations work, featuring a student press photography display. **Saturday:** annual California Agricultural press banquet, by invitation only.

Biological Sciences: Sci C-11, seashore animals of San Luis Obispo area; Sci B-7, wildflowers and hydroponics; Sci C-15, butterflies and termites; Sci B-4, microscope and photographic bacteriology display; Sci C-20, live snakes and reptiles of San Luis Obispo county.

Education: Classroom 15, elementary, secondary, and vocational agricultural education teacher training displays; psychology testing and hypnosis display; art and audio-visual displays. **Friday:** luncheon honoring Dr. Roy Simpson. Attendance limited to those purchasing tickets in advance from department members.

English and Speech: Lib. 118 A,B,C; Free coffee served continuously. Short films, including feature on late George Bernard Shaw. Presentations of one-act play, Noel Coward's "Fumed Oak," Friday at 11 a.m., 1 p.m., 3 p.m., Saturday at 1 p.m. and 5 p.m. Friday night, continuous performance of farce written by members of the English and Speech club, admission 10 cents, in Harvest Room of South Cafeteria.

Home Economics: Classroom 14; special occasion table settings; nursing; kitchen plans; clothing and textiles; student-built home furnishings. Cubicle X; Child care facilities for 3 to 5 year olds, 9 a.m. to 9 p.m. on Friday and 9 a.m. to 5 p.m. on Saturday.

Mathematics: AgEd 102; mathematical problems and their solutions. Math Contest, Friday. Military Science and Tactics; Ag. Engineering 123 and vicinity; weapons, communications, map display including Nike and RCAT; ROTC and Seaboard and Blade displays.

Physical Education: Aquatic show, Saturday, 11 a.m. and 2:30 p.m., natatorium. Competitive athletics, intramural sports, community recreation, kinesiology displays, gym annex.

Physical Science: Sci. D-rooms and E-rooms, displays include glass blowing, atomic roulette wheel, space satellites, and other features. Sci E-22, continuous motion pictures.

Social Sciences: Sci D-27, Free coffee, "Straw vote" of California Primary election.

Library: Browning room, reading room, and foyer showcase exhibits on "Education in Action," and Cal Poly history.

Way to Maturity

"It is said that trees that have to buffet gales often sink their roots more deeply in the soil than others do, and thus develop superior hardihood. Whether this is true or not, one must admit that Cal Poly has proved itself sturdy. In some cases adversity, at the time heartbreaking, have proved blessings in disguise."—Miss Margaret Chase, former acting president of Cal Poly.

Noel Coward Play To Be Presented By English Dept.

Main Poly Royal attraction of the English and Speech department will be the presentation of Noel Coward's one-act comedy, "Fumed Oak." The department's first dramatic undertaking will be staged at 11 a.m., 1 p.m., and 3 p.m. in Library 118 A, B, and C.

As in past years, everyone is invited to the department's continuous Coffee Hour, from 9 a.m. to 6 p.m., to meet students and instructors, see the photomurals by Chuck Lotapeloh, Mechanical Engineering major from San Luis Obispo, and view films shown between "Fumed Oak" performances.

Produced by Will Penna, English and Speech major from Larkspur, the "Fumed Oak" includes David Horton, truck crops major from Napa; Sylvia Noble, graduate student from San Luis Obispo; John Zacharias, architectural engineering major, Carmichael; Molly Zecher, elementary education major, Los Altos; and Sally Zecher, elementary education major, Los Altos. The play is being directed by Dr. Ralph Bobb.

one, adult or student, is allowed to take part. The same questions which the contestants are working, are flashed on the screen and the audience is given a set time to solve the problems. At the end of the time the answers are flashed on the screen and the papers of the audience are checked by math majors acting as monitors.

The Beshino and Stockbird local insurance agency has donated a \$100 award to the student ranking highest in the contest who plans to enroll at Cal Poly next year, regardless of major.

Another \$100 award to the student ranking highest in the contest who plans to enroll at Cal Poly next year as a secondary mathematics instructor major has been made by a former Cal Poly student.

High School Stars Compete in Annual Math Contest

"Students from senior high schools throughout the state of California will participate in the 6th annual mathematics contest today sponsored by Cal Poly's Math department during the 26th annual Poly Royal," says Dr. Milo Whitson, head of the Math department.

All students taking part in the contest are selected by their school administrators, with three students from each school eligible to compete as a team. Each student

MATH CONTEST
Place: Library Periodical Room.
Time Schedule:
10:00—10:45 Registration
10:45—11:00 Instructions
11:00—12:00 Part I
1:00—3:00 Part II
3:30—4:00 Awards
Audience Participation Phase:
Place: Library Reading Room
10:45 Part I
1:30 Part II

works individually to solve the various problems. At the end of the contest the results are tabulated for each student and an average established for each team. The team with the highest average receives the perpetual trophy.

As a side-light to the math contest, there will also be an audience participation group in which any-



Treat the Family Right
Zimmermans Cafe
785 Higuera

Home Economics Offers Child Care

A free baby sitting service is provided for children by the Home Economics department during Poly Royal.

"The services will be limited as to the number of children and the period of time due to the limited facilities," explains Marjory Elliot, head of the department.

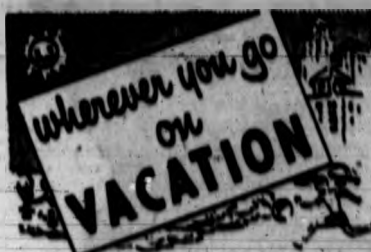
The service includes care for children 3 to 5 years old, for two hours each, with a maximum of 20 children at any one time. Hours are 9 a.m. to 9 p.m. on Friday, and 9 a.m. to 5 p.m. tomorrow. Food will not be served.

Many displays are also offered by the department, including table settings for special occasions, home nursing with improvised equipment, efficient kitchen plans, textiles, chairs made by the Home Furnishing class, and examples of garments made in the Family Clothing class.

These displays are located in Classrooms 14 and 14A of the Home Economics department.

Assisting the head of the department as co-chairmen are: Sue Westsmith, San Luis Obispo, and Betty Lindley, South Pasadena, posters and labels; Margaret Reimer, Watsonville, clothing and textiles; Marjorie Redington, Sheridan, Wyo., home nursing and equipment; Dorothy Tullock, Tempe, flower arrangement; Ruth Dethlefsen, Pleasant Hill, and Lynda Armstrong, Redding, home furnishings and decorations; Elmina Cormier, San Luis Obispo, foods; Leora Essig, San Luis Obispo, child care laboratory.

The state department of finance estimates that enrollment of the San Luis Obispo campus will reach a peak of 10,000 during the 1971-72 school year, while the Kellogg-Vocals campus in Pomona will soar to 12,000. Present enrollments are 4,000 for the "home" campus, and only 400 at K-V.



Keep a Kodak camera handy

Remember The ...

26th Annual
Poly Royal
with Pictures

Complete Stock of Finest
Cameras, Film and Photo equipment

Complete Assortment of
ROLL or MOVIE FILM
Black and White or Color

**CAL PHOTO
SUPPLY**

CORNER HIGUERA and MORRO

MEL SMITH WELCOMES YOU . . . to the

**26th Annual
POLY ROYAL**

New and Used Cars

Complete Parts and Service Facilities

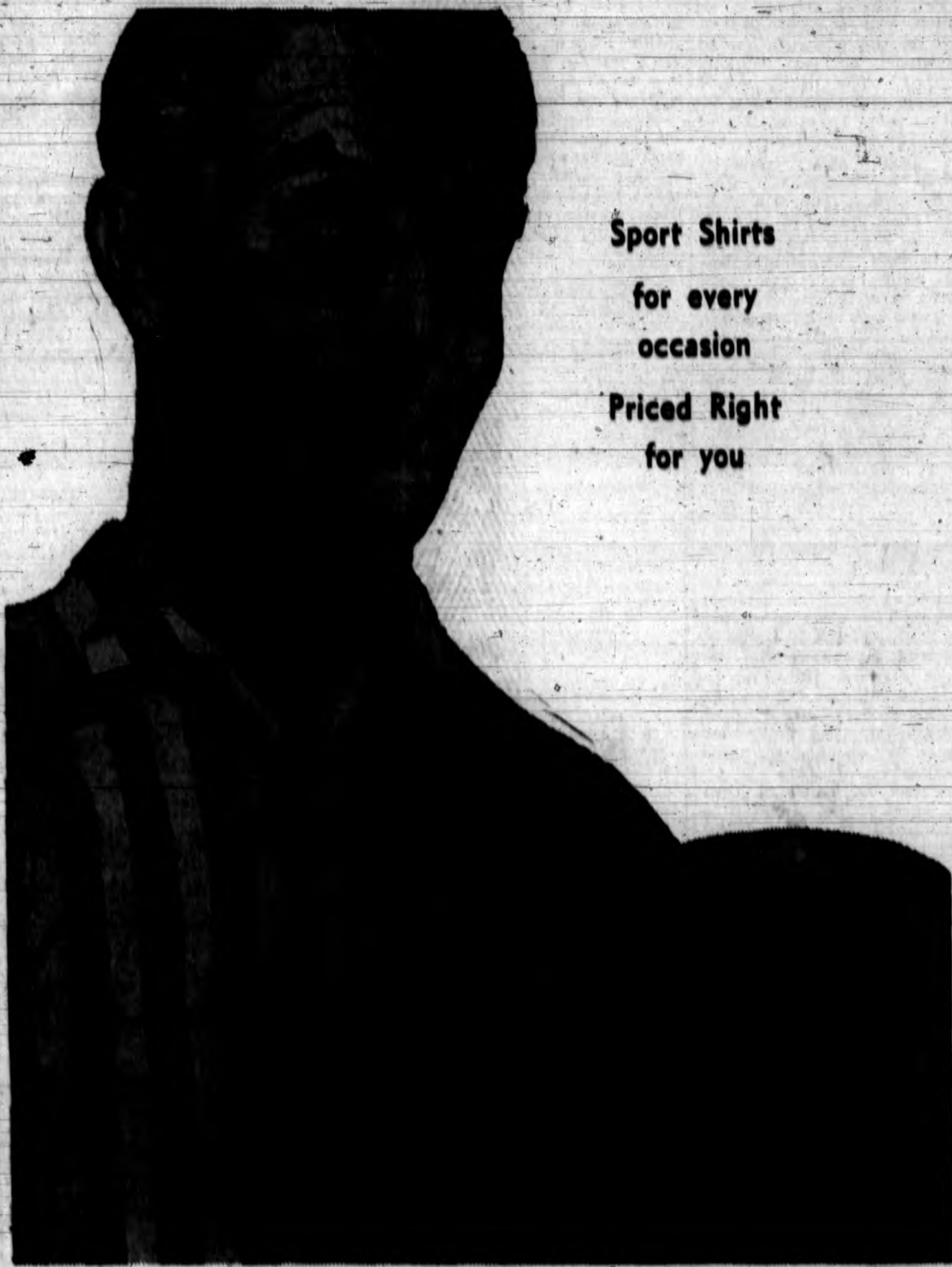
Mel Smith Chevrolet

1039 Monterey St.—San Luis Obispo—LI 3-3221





See the Special Poly Royal
Display in Rileys Window



Sport Shirts
for every
occasion
Priced Right
for you

For dates, for school, for knocking around, you'll find just the shirt you need in the fabulous selection at Rileys. Short sleeves, long sleeves, and Ivy League all priced to fit your budget. Come in soon and see for yourself. Prices start at a low \$2.98 for the finest shirts in town.

When you go to the rodeo...

WEAR **LEVI'S**[®]
AMERICA'S FINEST OVERALL[®]



WAIST SIZES 30 to 42
at the Nationally Advertised
Price of

'3.75

Visitors!

While you're in town treat yourself
to a visit to California's Finest, Most
Modern Store in the Central Coast Area



Cole's
frosted
moonlight

"Moonglow"...
such a nice way
to compliment
your curves! And
curves you'll
have in this
sheath of a suit
that literally
moulds you
into its own
beautiful shape.
"Power Profile"
inner bra.
Frosted Lastex.
10 to 18.
19.95

Cole
of california

RILEYS

Phone LI 3-1421

DEPARTMENT STORE
CHORRO at MARSH

Free Parking in our own lot at the
Corner of Chorro and Pacific, 1/2 block away

Princess Berta



HIGH FLYING FEMME... Poly Royal Princess Berta Keable checks the Aeronautical Engineering Department's light equipment on a visit to the student airport. The hangar and more labs display the welcome mat at every door for Poly Royal's visitors. Princess Berta, a freshman physical education major from Concord, will be seen visiting every display and attraction of the two-day campus fair, along with the Poly Royal queen and other princesses.

—Photo by Bill Wineinger

Well-Rounded Engineers At a Premium: Hayes

By Bill Tumlin

On this 26 annual Poly Royal, Cal Poly can boast the second largest under-graduate school of engineering in the West, according to Harold Hayes, dean of the division. "In 1945, this division had 25 students, and ten instructors who were also teaching special Navy students," says Hayes. "Now, we have about 2000 students and 55 instructors."

Asked if he had any advice for prospective students in his division, since the school is growing so rapidly, Hayes had this to offer: "Don't wait until starting college to think about engineering."

"The most important characteristics of a good engineer are an insatiable curiosity as to why things happen and an instinctive desire to do things better. Develop these characteristics as early as possible. Take a solid high school

program of mathematics, science, English, mechanical drawing, and shop work. Get some work experience related to engineering if possible. Any type of work experience is very helpful as a maturing factor, and maturity is one of the big keys to success in an engineering college."

Hayes says the engineering program at Cal Poly has a three-fold objective: to produce well-rounded graduates who are particularly well qualified in the engineering

Air Engineers Display Hangar, Labs

Largest Pacific Aeronautics School Exhibits Curriculum

By William A. Stolzenburg

This year at Cal Poly's "Country Fair On A College Campus," the Aeronautical Engineering department, largest department of its kind on the Pacific coast according to a recent government survey, will present "Education In Action" displays at the aero hangar and engine lab. The displays represent

course work from freshman to senior curriculum, says Aero Department's Poly Royal Committee Chairman, William C. Stewart, Klamath Falls, Oregon.

Stewart's committee is composed of: Dan Kelly, freshman, Riverside; James Crowder, sophomore, Los Angeles; Robert S. Lane, junior Redwood City; Paul Goulding, senior, Santa Maria; LaVerne E. Orr, junior, Arroyo Grande; Ray F. Lovell, senior, Hagerstown, Maryland. The committee has endeavored to consolidate displays to one area this year.

Displays represent three major areas of student work: technical, theoretical, and applicational.

In the technical area, students

from the Engines course and Construction Fundamentals course have prepared exhibits including engines used in class work, operational cutaways, and museum engines, among which are types used to operate earliest aircraft designs.

Exhibits from the Construction Fundamentals class include a riveting display, and machinery used in aircraft construction. Visitors will see equipment used by students in the development of their classroom skills.

One of the most important skills the engineer must master is drafting. This is the means by which he conveys his ideas to the craftsman. Examples of the equipment and type of instructional work

given including data sheets, manuals, and computations necessary to produce a drawing are shown.

A knowledge of materials and their properties is essential to an efficient and practical aircraft design. In the Strength of Materials laboratory, students put theory learned in class into practice. Displays of their work in the Strength lab and in the Hydraulics Course represent work in the theoretical area.

Also in the theoretical area, the aerodynamics students portray, in layman's language, the aerodynamic principles of flight. The display includes examples of fundamental aerodynamic theory put into practice.

In the applicational area, exhibit of projects designed and constructed by senior students to fill their senior project requirements are shown. These projects demonstrate the students' ability to solve engineering problems similar to those faced in industry.

The complete exhibit is designed to portray how the department tries to reach its goal of training students in the basic principles and skills required in the design, manufacture, maintenance, and testing of aircraft and their components.

Precision Work Tops Machine Show

By Dave Agnew

Cal Poly's machine shop department will exhibit at Poly Royal a class in actual operation of machining cast iron T-blocks to a tolerance of plus or minus 0.0005 inch. This is one of the many individual projects completed by each student during his course of study in the various classes in machine shop.

The machine shop at Cal Poly is unusually well-equipped with the latest machine tools and heat treating equipment such as might be found in the best commercial tool room. One spectacular item in the department's exhibit will be the recently added lathe shop powered by twenty new Le Blond lathes.

While this is not the intent of the machine shop to teach machine shop courses on a vocational level, points out Francis Whiting, department head, the instruction has two objectives: to give the student a foundation in the basic skills; and, to give an understanding of the part machine tools play in present day engineering and manufacturing enterprises.

While the machine shop does not offer a major, it serves as a service unit for instruction requested by all departments in both the engineering and agricultural divisions and is one of the busiest areas on the big 8,000-acre campus.

Fields of planning production, development production, operation, management, service and sales; graduates who are good citizens and wholesome individuals; and graduates who have a solid basis on which they may build further learning.

As to immediate prospects for Cal Poly engineering graduates, the dean had these words: "I believe the immediate prospects for our engineering majors are good. There are two reasons why I believe this. First, Cal Poly has a reputation for providing sound engineering graduates who are capable of producing effectively for their employers as soon as they arrive on the job. The tighter the employment market becomes, the more significant this reputation becomes."

"Secondly, the so-called temporary surplus of engineers has been greatly over-emphasized. There are plenty of good engineering jobs available for the 1958 graduates," Hayes says, "and I anticipate no let-up in this regard either in the near or distant future."

Concluding, Hayes says, "Despite the fact that this year's job offers are not so plentiful as last year's, the average starting salaries for our graduates are higher than last year."

"Engineering may be defined as the application of the laws of physical science, mathematics, and economics to structures, machines, processes, circuits, and systems. Cal Poly aims to teach a thorough understanding of these laws, the application of these laws to engineering problems, and good judgment in the application." From the Cal Poly Bulletin.

Rowan's

THE STORE FOR MEN AND BOYS

Salutes Poly Royal 1958 and the Men and Women of Cal Poly

P. S. Most of the big men on campus at Cal Poly shop Rowan's for the brands they know! Rowan's, the store for men and boys.

782 Higuera Street

THE TOWER

Coffee Shop

Lounge

Dining Room

LI 3-4287

To Reserve Your Table for That Poly Royal Dinner

Where Higuera Crosses Marsh St.

—South Freeway Ramp—

YOUR HOST—"WHIT" LEDSON

Dome Shines Again...



The geodesic dome, the first of its kind on the Pacific Coast, will be shown again this year during Poly Royal by the Architectural Engineering department. The 80 foot dome was designed by Architect R. Buckminster Fuller, and assembled by members of the department. Over 10,000 nuts and bolts went into the construction of the dome. It will serve this year as the entrance to the department's Poly Royal exhibit.

Architecture Students Show Competing Home Models

By Gale Enstad

Putting to work their design and composition abilities, the architectural engineering students at Cal Poly have devoted the entire week to converting their drawing lab into a huge display room for the 26th annual Poly Royal.

"Our departmental displays have been very popular in the past and we have many new and interesting designs this year which we believe will be of interest to many visitors attending Poly Royal," said Don Goldman of San Diego, junior in charge of interior display design.

One of the displays will show several tract home models designed by senior class members competing for a chance to have their design put into application by a Southern California contractor.

The best five designs, as judged by the Architectural Engineering instructors, will be sent to the Gaffers and Butler corporation, sponsors of the contest, for final judging.

Gaffers and Butler, producers of appliances and air conditioning units, set the specifications of the home and will stress application and utilization of air conditioning in judging the winner.

"The architectural engineering Poly Royal exhibits, displays, and presentation have been planned and carried out entirely by the students," said Tom Eads of San Diego, a junior, and co-chairman of preparation. "This year we have set up a tour route for spectators which will start at the entrance to the geodesic dome. We feel this will enable a more complete and interesting visit of our departmental displays."

Architectural engineering students will be present to explain the various displays and exhibits along the tour route.

Show started in 1933

Cal Poly's Poly Royal was started back in 1933 for the purpose of improving displaying techniques for the Inter-State Junior Livestock show which was held in San Francisco.

Former Polyites Return To Campus

Poly Royal Second Homecoming For Widespread Cal Poly Alumni

Cal Poly holds a distinct advantage over most other institutions in the field of "homecomings." Cal Poly has not one—essentially, it has two!

While late October or early November sees the traditional Homecoming program each year (it's set for Nov. 8 next fall), Poly Royal always gives alumni another prime occasion for a return visit to their native campus. And this year's Poly Royal will find hundreds of alumni "back home" to reestablish friendships and acquaintances and to keep an eye on what's been happening.

Many of the instructional departments arrange special events for Poly Royal every year. Typical is the 6th annual California Agricultural Press Banquet to be held at Edna Farm Center, Saturday evening. Among the newspaper, magazine, radio, television, advertising and public relations personnel gathering for this statewide event will be many of the Agri-

cultural Journalism department's alumni now occupying a wide range of strategic communications posts where a journalist's knowledge of agriculture and agricultural people is at a premium.

Many people are unaware that during its comparatively brief span, Cal Poly has developed a list of some 6,000 alumni—scattered throughout the world and frameworked in the National Alumni Association. This year's national alumni president is Herbert Pearce, Douglas aircraft engineer at Los Angeles. National headquarters are on the home campus here, with Lou Hankoff, a faculty member and

Cal Poly alumnus in his own right, as national secretary-treasurer. Carl Beck (himself known as "The Father of Poly Royal") is alumni advisor for the San Luis Obispo campus. Henry House and Robert Winterborne are advisors for the Kellogg-Voorhis campus which with K-V's first graduating class last year has now begun supplying its share of alumni.

Alumni activities outside California, except for Hawaii, are administered through a "region-at-large." Hawaii has a region all its own under the regional presidency of Boyd Chee, Tanakal. Six regions operate within California: North Coast, headed by Harold Truesdale, Santa Rosa; Sacramento Valley, Frank LaSalle, Wheatland; South Coast, Donald Schwall, Shell Beach; San Joaquin, Bates Howers, Hanford; Golden Gate, Pat Cunningham, San Mateo; Central, Wesley Wilson, Sacramento; and the Southern, presently headed by national president Pearce.

The region-at-large actually spans the world, for Cal Poly. Alumni are now found in practically every country on the globe. Again, even one of the smaller departments such as Agricultural Journalism finds its alumni "international"—Bob Stein, with the U.S. Department of Commerce, supervising an international trade exposition at Osaka, Japan; Ted Plaster, with the U.S. Language Center at Bangkok, Thailand; and others. Larger departments such as Aeronautical Engineering and Animal Husbandry find their international contingents even wider afield.

Increasing numbers of Cal Poly alumni in the East and mid-West have brought news of numerous local meetings held in those areas. Visiting alumni are urged to leave news notes with their department heads for inclusion in the alumni publication, "Alumni News," which now goes to the entire list of 4,000 plus members of current senior classes.

Cal Poly's on-campus alumni group, "Alumniopolis," is made up of Cal Poly alumni now employed by the college. Under the presidency of Dr. Jack Albright, Dairy Husbandry department, it will be in charge of this year's Senior Ball at graduation time and pursue numerous other activities designed to acquaint students with the alumni association and its purposes.

Yes, there will be hundreds of returning alumni on campus for Poly Royal but Poly Royal, actually, will be held throughout the world. For what alumnus or alumna (now) can ever forget that spring brings the west coast's famous "County Fair on a College Campus?"

'Herman II' Debuts As Feature Of Mechanical Engrs.

by Tom Druet

Herman Gearline II, a six foot robot built as a senior project by two mechanical engineering seniors, Jack Richey, Santa Cruz, and Richard Cook, Santa Maria, will be introduced to the public during Poly Royal.

The mechanical-electrical, hydraulically remote-controlled robot is one of the main attractions of the Mechanical Engineering department's display during Poly Royal.

"Herman will be used as a demonstration of the principles of automation which will effect our lives in the years to come," says Richey. Incorporating ten electric motors, powered by two 12-volt auto batteries, the robot has three speeds in forward or reverse, and automatically shifts into a lower gear when encountering an incline. It is able to pick up a maximum weight of five pounds. Forward and reverse movements are controlled by a radio unit, and arm and head movements by a control box connected to the robot by a service cord.

Herman is the second and more advanced of the department robots, Herman Gearline I having made his debut during the 1956 Poly Royal.

Nike Missile, RCAT Top ROTC Display

The Nike Missile, a phase of modern air defense; a demonstration of radio controlled target drones, the RCAT; the latest in ammunition and uniforms used by the U.S. Army; and equipment used by Cal Poly's ROTC unit are on display at the ROTC's Poly Royal exhibit, in the Agricultural Engineering building.

Included in the Nike Missile exhibit are two films on the Nike and its development in air defense, a table top model of the Missile Master Control System, with a map showing its development in and around Los Angeles, and a miniature Nike demonstrator designed to "shoot down" an enemy bomber with the aid of a CO-2 cartridge.

A display of various types of ammunition as well as modern army uniforms will be shown, along with the latest in ROTC guns, equipment and training aids utilized by the Cal Poly cadets in their training.

Poly's ROTC program trains cadets for a commission as Second Lieutenant in a branch of the service. Upon successful completion of the four year cadet training course, the cadet has the opportunity to be commissioned in the Regular Army or serve for six months or two years in the Active Reserve.

Welders Conduct World Movie Tour

Visitors to the Cal Poly Welding department today and tomorrow will share a breath-taking trip around the world, through a series of color movies depicting Bechtel Construction Company operations in all parts of the world.

The schedule of performances of the sound-travelogue is posted in the Welding department. Benches are provided for foot-weary travelers who wish to enjoy a rest while watching the movies.

The welding exhibit also features a complete display of examples of student work, with all types of welds, as well as finished products which have been built by students in welding lab. There are also many of the automatic welding machines operated by students on display. Some of these are the spot welder, submerged arc welder,

and the Linde Union arc.

The exhibit was prepared by members of the student chapter of the American Welding Society, with mechanical engineering major James A. Miller, San Luis Obispo, in charge. Miller's assistants include: Wayne R. Clites, mechanical engineering, Huntington Beach; Richard F. Lawson, mechanical engineering, Rio Vista; Paul H. Lewis, mechanical engineering, Alameda; John Magorian, mechanical engineering, Delano; and William W. Walker, animal husbandry, San Luis Obispo.

The Welding department is a service division at Cal Poly. Although it does not grant a degree, it helps give mechanical engineers and agricultural students practical experience as well as classroom instruction in welding.

Smedley



Mennen Spray Deodorant for Men keeps on working all day long—working to prevent odor, working to check perspiration. For this non-stop protection, get Mennen!

60¢ and \$1.00



LOVELY ROSE BOWL COURT

FINEST MOTEL IN SAN LUIS OBISPO
FREE TELEVISION
IN EVERY UNIT



1575 Monterey Street

U.S. 101

Liberty 3-5017

Dairy Showmen Compete Tomorrow

Saturday morning's dairy judging contest will climax weeks of preparation and hard work by some thirty-four students enrolled in the Dairy Fitting and Showing class, taught by Dairy Department staff for Jack Robinson.

Visitors are welcome to view the contest, which starts at 8:30 a.m. Robinson predicts that this year's dairy judging contest will be one of the best ever held during Poly Royal, since it has been made an integral part of the new course in fitting and showing.

The thirty-four students in the class include six coeds, one of whom is Poly Royal princess Mary Rich, Glendale. Two of the other coeds, Barbara Unland and Barbara Foley, are past Homecoming queens.

The students will be vying for an impressive list of awards and trophies during the contest. These include the Nelson-Page trophy for the winner, as well as first, second, and third place prizes offered by the Holstein-Friesian Association, American Guernsey Association, and American Jersey Association.

Breed trophies will be awarded to students showing animals of the three breeds which place in the top spots. Fieldmen from each of the associations will be on hand to present the trophies. The top showman of the contest will be presented with an award, and there will be a special award for the best fitted animal.

Warren Vander Hule, Dairy Husbandry student from Petaluma, is in charge of the contest. The event will feature thirteen Holsteins, twelve Guernseys, and nine Jerseys. Harry LaFranchi, Callistoga, one of the nation's outstanding Agri-shire breeders, will judge the contest.

The heifers were brought in March 24, and the students began working with them. As the class progresses, the students are learning how to make blankets, clip, wash, and prepare the animals for showing. They will also learn the intricacies of fitting the fair entry blanks and other show forms.

Although the Poly Royal showmanship contest is the high point of the course, Instructor Robinson points out that experience gained in the course should help the students get summer jobs with some of the top show herds that tour the western show circuits each summer, as well as helping them to gain employment after graduation.

Ag Engineers Have Farm Machinery, Power Project Show

The Agricultural Engineering department has a variety of displays guaranteed to draw the attention of any Poly Royal visitor interested in agricultural engineering, according to James F. Merson, department head.

Featured in this year's display in rooms three, four, and five of the Agricultural Engineering building and the Farm Shop will be projects and machinery designed and built by AE students.

An exhibit of engines being tested on a dynamometer, designed to test horsepower and torque is always a popular attraction, as are the cut-away engines showing the actual operation of the various parts of an engine.

Also included within the ag engineering department are the sections of farm structures, irrigation, rural electrification and surveying, each of which has an exhibit showing work being done this year.

In addition to the school displays, various commercial dealers and manufacturers have been invited to exhibit the newest in their lines of tractors and farm equipment.

The Ag Engineering club is also responsible for two other well known features of Poly Royal, the Ladies Nail Driving contest, and the Wagon Tours of the Campus.

The annual Agricultural Engineering banquet is the highlight of Poly Royal for students, parents and special guests alike. It will be held Friday evening at the Veterans Memorial building, in San Luis Obispo.

First Queen

Jane Horton, a San Luis Obispo girl, was elected queen of the first Poly Royal back in 1934.

Princess Mary



ROYAL MILEMAID—A pretty princess is Mary Rich, freshmen home economics major from Glendale. The part heifer is the Guernsey bull assigned to Mary in the dairy cattle fitting and showing class, which will compete in dairy showmanship contests tomorrow morning at the Dairy Unit. Mary will spend most of her time during the college country fair as one of the three princesses to be seen gracing the Cal Poly campus. —Photo by Keeble

Ag Division Stresses 'Doing' Via Foundation Projects

By Tom Golding

The Agricultural Division of Cal Poly prepares students in the field of agriculture with the main objective of giving each student a full and broad understanding of the basic factors involved in production, management, and marketing.

Learn by Doing, the bywords of Cal Poly, are stressed to the fullest extent by this division.

Under the Cal Poly Foundation program student projects in raising beef cattle, sheep and swine are designed to provide additional experience and practice to supplement the regular curricula.

This practical experience gives the student a better understanding of production and managerial problems that are important in the over-all training of an agriculture major. Many of these projects will be displayed by the students during Poly Royal.

Cal Poly now has the fifth largest enrollment in agriculture among all colleges in the United States, according to Warren T. Smith, Assistant Dean of Agriculture. At the present time the division boasts 1,012 men, and 29 co-ed students enrolled in such major fields of study as animal husbandry, agricultural engineering, crop production, dairy husbandry and manufacturing, soil science and poultry husbandry.

In the field of horticulture including ornamental horticulture, field, fruit, and truck crops, Cal Poly has the largest enrollment of any college in the country, Dean Smith also mentioned.

The Farm Management department, in operation only three years, has proved so popular that it now ranks as the second largest in the United States.

Regardless of what major field of study an agricultural student may choose for a career, the excellent training and experience he receives at Cal Poly will enable him to take his place among the leaders in today's ever changing field of agriculture, expressed Smith.

Lady Carpenters Vie For Prizes

More thumbs galore are expected to mark the occasion when the traditional Lady's Nail-driving contest is held in the football stadium Saturday morning. The annual event, scheduled to start at 10:30 a.m., is designed to afford the housewife who has to "do it herself" a chance to show her prowess with that time-honored carpenter's tool, the claw hammer.

Contest chairman Ken Waters, Van Nuys, says that no entry fee will be required, and prizes will be awarded to the first three place winners. The contest will be run

Showmen Display Skill With Livestock

Student-Raised Meat Animals Parade in Showmanship Contest

If you think showing livestock looks simple, try teaching a half-ton steer to follow at the end of a halter rope or stand still when you want him to! Or maneuver a Poland China pig around a show ring jammed with competing showmen and animals, trying to catch the judge's attention!

World in Miniature Depicted in Flowers By OH Department

By Beatrice Adams

"World of Gardens" is the theme of the seventh annual flower show to be presented by the Ornamental Horticultural department at Poly Royal.

The exhibit will be held in Farm Shop 4 of the Ag. Engineering Dept. Limited to OH students, they will depict garden scenes of the world. Each student will choose a land which he will represent in flowers.

The flower arrangement and specimen flower contest is open to all who desire to participate.

The exhibit is under the direction of Anthony J. Amato, instructor of the OH department, and Harold Hanks, Los Angeles, and George Vanes, Biggs, OH majors and co-chairmen in charge of flower design and installation, and OH major Robert Joy, Paramus, New Jersey, publicity chairman.

An additional display by the OH division will be "The Nursery Products Display" at the OH unit, under the direction of Ernest R. Houston, OH instructor.

Judging for the contest is Friday, at 10 a.m., after which the displays are to be open to the public. Judges for the affair include: Elsie Uman Knoll, Garden Editor of Sunset Magazine, Menlo Park; Robert Weidner, past president of the State Florist Association and owner of the Buena Park Greenhouses, La Habra; and Mrs. H. E. King of the Monday Club, San Luis Obispo, well known for her participation in flower judging at the California State Fair for several years.

"The flower show this year will be the largest of its kind ever to be held at Cal Poly," predicts Howard C. Brown, head of the OH department.

Educated Chicks, Egg Grading At Poultry Show

By William Winkler

Students won't be the only ones demonstrating the fruits of the "Learn-By-Doing" system at this year's Poly Royal. Poultry Husbandry majors have applied the technique to educating chicks—the feathered variety—who have learned to feed themselves by hopping onto a chicken-size merry-go-round and riding to their dinner.

A brooder full of brightly-tinted baby chicks, and more hatching in a glass incubator from eggs inoculated with bright hues, should provide a colorful display especially exciting to the children.

If you haven't decided which comes first, the chicken or the egg, be sure to see the living embryo display which shows the various stages of a chick's development.

Co-chairman of this year's Poly Royal Poultry Show, George Losche, San Luis Obispo, and John Thomas, Lynwood, have another feature exhibit designed especially for homemakers. A display of the various egg grades and sizes to illustrate difference in quality of each grade and commercial methods of grading will be shown.

Poultry department majors will also stage their annual Egg and Poultry show. Chester Harshman, Spring Valley, in charge of the egg show, and Harry Nauhaus, Escala, Kauai, T.H., in charge of poultry, have worked hard with their committees to make the show a success. Five cups and dozens of ribbons will be awarded to the best bird and egg entries, which are part of the Cal Poly

Animal Husbandry majors started training show stock for this year's Poly Royal showmanship contests as far back as March, when steers were getting their first taste of the rope and halter.

Douglas Snyder, Poway, California, is chairman of the beef showmanship contest which will include Shorthorn, Angus and Hereford steers and heifers.

Sheep showman contests will include Hampshire and Suffolk ewes and lambs. AH majors Bill Harvey, Paso Robles, and Jim Coyle, La Mesa, are handling preparations for the sheep contests.

Horses will be shown in one mixed class, including mares and geldings from Cal Poly's Quarter Horse string. Roger Linton, Palo Alto, is in charge of this event.

Five classes of hogs will be shown. Don Barner, Corona, and Lamond Woods, Fontana, have scheduled Berkshire and Poland China gilt and barrow classes and a crossbred barrow class.

In addition to the showmanship contest sponsored by the Boots and Spurs Club in conjunction with the Animal Husbandry department, there will be a meat exhibit presented jointly with the Agricultural Engineering department and featuring meat cuts from choice Poly-grown and slaughtered beef.

Since many of Cal Poly's Animal Husbandry graduates engage in livestock ranching as foremen or managers, Poly Royal gives the students an opportunity to gain practical livestock showing experience in addition to the other exhibitions entered by the college.

Animal Husbandry majors are encouraged to participate in the extensive student feeding, management, and marketing project program in order to apply their technical training. The school maintains approximately 500 hogs, 500 sheep, 100 beef and a growing string of fine Quarter Horses and Thoroughbreds to facilitate its student project program.

Sods of California Top Soil Display

Soils of California, range conservation, plant nutrient deficiencies and fertilizer displays will make up the Poly Royal show for the soil science department.

The displays will be in the science building, Rooms A-12 and A-9. Movies will be shown in A-11.

Also on exhibit will be soil classification and field type work, mineral weathering and fluorescent rocks and an extensive soil physics demonstration.

Student chairman of the soil science department exhibit is Sid Blomer of Sebastopol.

Members of the committee are Dan Holbrook and Chuck Scribner, both of San Luis Obispo; Jim Johnston of Morro Bay; Robert Cavallo of Santa Barbara; Charles Haskins of Brawley and Francis Hicks of Reedley.

Poultry Husbandry department's extensive student projects.

Albert L. Carter, department faculty member, has kept his Poultry Incubation class busy preparing many of the embryo, brooder, and incubator displays, using chicks and eggs from the 15,000 egg hatchery.

Cal Poly is keeping pace with California's rapidly developing modern poultry industry by preparing poultry majors to meet both technical and practical demands in the field. Commercial poultry ranches, marketing organizations, egg processing plants, hatcheries, and vocational agricultural teaching are only a few of the fields entered by the college's poultry husbandrymen.

The Cal Poly Poultry department, second largest in the United States, gives each poultry major an opportunity to complete projects in the specialized field which interests him most.

Growth, 'Learn-by-Doing' In Animal Husbandry Told

By Bill Tumlin

The 26th Annual Poly Royal finds Cal Poly's home campus boasting the largest Animal Husbandry department in the West, according to Lyman Bennion, head of the department.

"At the first Poly Royal, this department had 19 students and one instructor—the present dean, Vard Shepard. We now have nearly 400 students and we have 15 instructors. With present facilities about 400 students is the optimum, and we are now planning to better handle that number, rather than expand to more students," says Bennion.

"I consider a major role of our department to be one of delivering well-trained young people to the animal industry—people who are at once prepared to better the industry and themselves." Bennion went on. "A second role is to help educate the public and those connected with the animal industry to the needs and long-range plans of the industry. The learn-by-doing system we use here leads itself perfectly to these two roles."

"One of our biggest features at this Poly Royal will be the fitting and showing of some 800 animals by our Animal Husbandry majors, and here is the opportunity to see the two roles we have described. The AH students get the practice and experience of fitting and showing animals, and the public sees what the industry considers ideal animal types. People connected with the industry can go back to their ranches with this ideal type in their minds, a type which experiment has shown will give them more return for their efforts."

Each unit in the AH department has a student committee planning the Poly Royal exhibits. The beef unit has Doug Snyder, Poway; Frank Paneno, La Canada; and John Weaver, Bishop.

The sheep unit is represented by Bill Harvey, Paso Robles, and the horse unit by Roger Linton, Palo Alto, and Jeff Sparks, Snelling.

Cal Poly's swine unit is guided by Verne Chapman, Hayward; Don Warner, Ceres; and Larry Holm, Castro Valley.

The meat laboratory is having open house and an exhibit, as will the near-by campus feed-mill. Instructors Bloom, of feeds, and Meyers, of meats lab, will show visitors how AH majors mix the formulas and feeds, convert them to beef and pork, and deliver the finished product.

Judges for the fitting and showing events will be George Strathern, Jr., a Cal Poly AH graduate, now a cattle rancher at Chowchilla; Ben Maddox, Bakersfield sheep breeder and showman; Don Bowers, Bakersfield veterinary supply-man, also a graduate of Cal Poly and a former AH teacher here; and Martin Clark, Soledad rancher. Clark graduated from Cal Poly, and he was Poly Royal superintendent one year.

Bennion says a new agricultural classroom building is already planned for Cal Poly, and will furnish some most desirable facilities for AH majors, particularly in that

certain laboratories will be available which are needed now.

"Prospects of good jobs for our AH graduates are bright as ever," says Bennion, "many of our graduates are in key positions in the animal products industry and related fields. Many of our students come from their own ranches, and go back to them better prepared to face to-day's stiff competition."

"As all agriculture people know, farming is a way of life," Bennion continued. "Our graduate taking a ranch foreman's job at \$250 per month may be far better off financially and otherwise because of the privileges going with the job. I refer to free rent, a garden, livestock, bonuses, etc. These things may run his income well above the deceptively low figure seen at first glance."

"We AH people know this, and have long since taken the facts into consideration in planning our careers. Thus we can take lightly the criticism of the low pay in our industry."

State Water, Soil Problems Explained By Farm Managers

The three "R's" of California land management, Resources, Remedies, and Results, form a giant display by Cal Poly's Farm Management department in the Agricultural Engineering auditorium during the 26th annual Poly Royal which begins today.

Maps, diagrams, and charts set forth the problems Californians face in soil, water, and management in graphic detail. Other displays show how these problems are correlated with courses offered by Farm Management department at Cal Poly.

Chairman of the display committee is Dave Wankum, Delano, junior Farm Management major. Assisting him are: Marshall Phillips, Lemoore, junior; Don Ford, Stockton, junior; Harvey Freetly, Lodi, junior; Tom Bowles, North Hollywood, junior; "Bud" Anderson, San Diego, sophomore; and Oscar Trippet, San Luis Obispo, senior; all are Farm Management majors.

Besides the display in the Ag. Engineering Auditorium, the department is sponsoring a booth at the carnival tonight. The booth is under the chairmanship of Gary Morse, Burbank, and will feature a dunking tank.

A thrown ball, when hitting a spring-loaded lever, dumps a "diver" into a tank of water from a platform ten feet in the air. "We think we have a real attraction here," said Morse.

Livestock Experts Pit Judging Skills In Tests Tomorrow

The traditional Poly Royal adult livestock judging contest will be sponsored this year by the campus Farm Bureau Center. This is the only Farm Bureau Center in the nation located on a college campus. Don Freeborn, Simmler, is in charge of the judging contest.

Approximately a dozen teams will take part in the contest, which will be held a 10:00 a.m., tomorrow in the football stadium. The event is open to teams made up of members of any recognized farm group in California, including Farm Bureau Centers, Grange Chapters, County Livestock Associations, and Young Farmer Chapters.

The winning team will be awarded a trophy, and the all-around individual winner, as well as the winners of each class, will be presented certificates.

Five classes of livestock will be judged, including beef cattle, sheep, swine, dairy cattle, and horses. Official judge for the event is J. I. Thompson, San Luis Obispo. Class judges are: Lyman Bennion, beef; Richard Birkett, sheep; Russell Anderson, swine; Bill Gifford

Ice Cream Treat Made Here Sold By Dairy Majors

For one of the tastiest treats of your life, take advantage of the ice cream sandwich sales on campus during Poly Royal, advises Bob Abacherli, Rialto, co-chairman with Bob Taylor, Oakland, and Howard Eastham, San Jacinto, on production and sales.

The ice cream has been made by students in the Dairy Manufacturing plant and is being vend- ed by salesmen throughout the two-day campus fair. Poly Royal visitors will not only be able to eat the product, but are invited to tour the campus creamery and see how Dairy Manufacturing

horses; and Jack Albright dairy.

The Cal Poly Youth Grange Chapter will co-sponsor the event. The Young Farmers will officiate at the FFA judging contest, which is run jointly with the adult livestock judging contest. Cal Poly Collegiate FFA will handle tabulations for both contests.

The Farm Bureau Center is also sponsoring a soft-drink booth at the Friday night carnival and has an exhibit in the farm shop.

majors make not only the ice cream, but butter and cheese, and process milk.

DM students will show how milk is received—after being milked by Dairy Husbandry students from student project cows—and processed for use in the college cafeteria, fountain, and campus produce store. All popular varieties of ice cream are made and sold and butter and cheese is sold when available.

Don Lecheron, dairy husbandry and dairy manufacturing majors' club, is also sponsoring a dime pitch booth at the carnival tonight. Poly Royal co-chairmen are Austin Olinger of Norco, for the DM majors and Howard Dabney, San Luis Obispo, for FFA.

The dairy unit's foundation farm is holding open house during Poly Royal. Visitors are invited to see purebred and prize-winning Holstein, Buernsey, and Jersey cattle, feeding facilities show barn and pavilion, and the up-to-date milking barn.

Student press photographers, members of the Cal Poly affiliate of the National Press Photographers Assn., are presenting their first photo display, according to Mike Mattis, president. Photographs, including prizewinners, range from sports action to art, and are exhibited in room 21 of the Administration building basement.

Best of Luck with your
26th annual Poly Royal

the Biggest
Tire Value
in Town!

SEIBERLING
SUPER SERVICE



Full Tread Wear
Guaranteed in Writing
... Road Hazards Included!

Built with tough tread for extra original tread mileage and super-strong casing for bonus recap mileage!

Stop in. We'll figure out a trade deal that will be a pleasant surprise for you.

EASY TERMS!

We are Tubeless Tire Experts —
See us for service on all makes

Congratulations
on your 26th
Poly Poyal

Drop in Anytime
and visit
Bud Idler

An Alumnus — Class '53

IDLERS'

1450 Elguera

LI 3-0745

262 HIGUERA

DIAL LI 3-0747

Electronic Home Appliances Displayed in New Building

By Adelbert F. Patterson

"Learn-by-doing," general theme of the educational plan at Cal Poly, is the main theme for the Electronic Engineering department's open-house exhibit for Poly Royal, which will be the first major public display of Cal Poly's new Electronic and Electrical Engineering facilities, housed in the recently completed East Engineering building.

For the housewife, a radar oven, such as will cook an egg in 30 seconds in homes of the future, is on display. Other home appliances, such as a super-sound washing process, are being sought by Electronics majors for the display. A stereophonic sound demonstration is also on the agenda. The department's displays also include practical demonstrations of the laboratory experiments perform by the students during their four years at Cal Poly.

Department Poly Royal Co-chairmen are William V. Botta of San Bernardino and Hugh A. Stubbs of Long Beach. They are being assisted by Senior Class Chairman Carl Horenson of Lynwood, Junior Class Chairman Don Miller of Battle Creek, Michigan, Sophomore Class Chairman Donald Roberts of Portland, Oregon, Freshman Class Chairman John Higbee of Monrovia, Carnival Chairman Richard Silvio of Jamestown, N.Y., and Special Interest Chairman Graham Walker of Hollywood.

Each of the class displays is a brief outline of the material covered by the courses for that year. The freshman display will

involve study of basic electrical components and circuits up to the building of a superheterodyne radio receiver.

The sophomore display will deal with more advanced subject matter, still on the technical level.

The Junior display shows typical lab experiments illustrated by a static set-up of lab test equipment. The effects of changing bias in a vacuum-tube circuit will be demonstrated. Power transistor operation will also be shown.

The senior display will deal with more advanced problems of electronic circuitry, including work with microwaves and analog computers. Also in the senior display are some typical Senior Projects completed by the Electronics Engineering students for their EE degree.

There is a Special Interest display of material not specifically covered by courses in the Electronics Engineering Department. In charge of a display by the Medical Electronics Interest Group is Jim Grotta of Napa. Dick Cummings of Oakland is arranging for a demonstration of stereophonic sound by the Audio Interest Group.

History of the phonograph will be portrayed with the aid of a display donated by Erland Cohn of Modesto.

An attempt is being made to secure an R.F. (radar) oven and a closed-circuit T. V. set-up from local dealers. Also, an out-of-town firm is being contacted in an effort to secure a model of the Vanguard Satellite and a solar battery display.

Mechanical Engrs. Prepare Facilities, Student Projects

Teaching methods, training aids, and laboratories designed to train tomorrow's engineers provide the theme for this year's Mechanical Engineering department's Poly Royal display, says James H. Fryer, junior ME major from Glendale.

In a special effort to show prospective students and their parents the facilities and opportunities of the course as taught at Cal Poly, ME students are conducting tours through the department. Coffee and donuts are being served to all visitors.

Special displays included in the tour are: demonstrations of modern gas analyzing equipment, automotive engine performance equipment, gasoline engine rating equipment, stationary engine and performance equipment, various types of power sources, and mechanical driving equipment, including displays of machine design projects.

All ME facilities are open for inspection. These include the heat power lab, fuel research engine room, fluid mechanics lab, college heating plant, senior project shop, drafting labs, senior design labs, and the strength of materials lab.

Senior projects in competition for the Thomas J. Zilka award are on display. This award is presented each year for the outstanding mechanical engineering senior project. It was originated by and named for the former head of the department.

"The aim of the ME Department is to turn out a well-rounded engineer," says Department Head Morris P. Taylor. "The student is to be thoroughly grounded in mathematics and the basic sciences, and in their applications to heat engines, fluid flow, mechanical designs, and similar problems. In addition, an engineer should be an educated man in the general sense, with a knowledge and appreciation of history, literature, economics, and arts."

"Graduates are in engineering research, design, testing, supervision, manufacturing, inspection, application, and sales engineering positions in all sorts of manufacturing concerns, from the largest to the smallest, and some are in technical or contracting businesses of their own."

The ME display is in the ME laboratory, adjacent to the power house.

Cal Poly's own

El Corral

Book and Variety Store

Campus shopping center for gifts to retain memories of the Silver Anniversary of Poly Royal.

SOUVENIR STUFFED ANIMALS



Soft, cuddly Cal Poly souvenir stuffed animals that are perfect for home decor or as sturdy toys for the kiddies.

Wide Assortment

LARGE COLORFUL PRINTS

Beautiful reproductions! Many prints are twice the size of this entire newspaper page. Select from a varied assortment to add new decorator interest to your home; on your walls, framed or unframed. Rare chance to own examples of fine art.

1⁰⁰ and up

an "ACE" of a JACKET



High count Perka Poplin, Zelan treated to repel water. Mercerized for luster. Sanforized fabric won't shrink over 2%. Slash pockets.

5⁵¹

Sizes small, medium, large



ALSO . . .

remember the college fountain directly across the hall.

Drop into the Administration Basement and see us !!!

Earle & Nadine

BARR

And all our Co-Workers

Wish

CAL POLY

and the

Poly Royal

Committee

THE BEST

of

Everything

for

This Year

and

ALL YEARS

To Come

Serving

Breakfast

Lunch

Dinner

and in Between

SNACKS

to

Cal Poly

STUDENTS

and Families

7 A.M. TO 1 A.M.

Four Blocks

From The

CAMPUS

On Highway 1



BARR'S

4th Estate Meets Tomorrow at Ag. Press Banquet

Members of the agricultural fourth estate from throughout the state will attend the sixth annual California Agricultural Press Banquet tomorrow night as guests of the Cal Poly Press Association, student organization of agricultural journalism majors.

Approximately 200 of the state's leading newspaper, magazine, radio-TV, advertising and public relations men, agricultural majors, alumni, and their guests, will hear George Mohren, head of the (Glenn) Foundation, speak on future trends in agriculture and future needs of agricultural journalists. The banquet begins at 7 p.m. at the Edna Farm Center on Broad St.

In charge of preparations for the banquet is Alton Pryor, senior from King City, and Press Club president, who will also serve as master of ceremonies.

The department also is displaying examples of the "learn by doing" philosophy of Cal Poly as applied to ag. journalism. In administration room 21, the student news bureau, which sends press releases from the college to all outside press media, has displayed how its releases have been used throughout the state.

The advertising branch, under instructor Loren Nicholson, has displayed examples of a class project, an advertising package to be made available to newspapers as an aid to selling advertising in special fair editions.

The news bureau photography staff has on display a photo exhibit of the best pictures taken during the school year by student press photographers. Included are prize-winning photos entered earlier in the year in California Intercollegiate photography contests. The display is sponsored by the Cal Poly affiliate of the National Press Photographers Assn.

The area of the room devoted to publication of the twice-weekly student newspaper, El Mustang, is being left open, as is the department darkroom, for use by students during the two-day Poly Royal. Students are working in these areas to get out pictures and copy of contest results and feature events to local and state-wide newspaper and radio sources. Six pages of the 1958 yearbook have been held up by the publishers to allow pictures and the story of this year's Poly Royal to be sent in, in time for May publication.

Ag. Journalism alumni and guests are invited to visit in Adm. 14 where coffee will be served. A coffee hour will be held Saturday before and after the banquet, under the management of the ag. journalism student wives.



BAA, BAA, BLACK SHEEP—Poly Royal queen Gale Manley and her court inspect two of the Poly lambs that may put in an appearance in next year's Poly Royal showmanship contest. The girls are, left to right: Roberta Keeble, Concord; Deanna Larramendy, Ventura; Queen Gale Manley, Hollister; Mary Rich, Glendale; and Barbara Brewer, Long Beach. The five were chosen from a field of 28 Cal Poly "home-grown" ewes by a selecting committee, after which Miss Manley was chosen queen by popular vote of the student body. The girls, second generation of royalty to come from the campus since the gates were opened to ewes in the fall of 1956, have a chock-full schedule on their hands today and tomorrow. They will make appearances at every Poly Royal event and display, and provide the climax for the 26th annual event tomorrow night, when Gale is crowned Queen at the Coronation Ball.

—Sales Photo

CFFA Sponsors Souvenir Button

This year's Poly Royal button, designed by I.E. major Emil Saxberg, is being sold by the Cal Poly Collegiate Future Farmers of America. Buttons may be purchased for twenty-five cents from any CFFA member or from El Corral. CFFA and the California Student Teacher's Association are co-sponsoring a luncheon for Cal Poly's guest of honor, Dr. Roy Simpson, State Superintendent of Public Education, at noon Friday.

The Collegiate Future Farmers will handle tabulations for both adult and junior livestock judging Saturday morning. The judging contests are co-sponsored by the Cal Poly Farm Center, Young Farmers, and the Cal Poly chapter, Youth Grange.

CFFA is the student organization of future vocational agricultural teachers. Approximately fifty per cent of California's secondary school teachers of agriculture are graduates of Cal Poly.

der the management of the ag. journalism student wives.

AMF AUTOMATIC PINSPOTTERS

PHONE 148

ATASCADERO BOWL

ATASCADERO, CALIFORNIA

OPEN BOWLING 6 TO 8 P.M. & AFTER 10:30 P.M.
SAT. AND SUN. FROM 1 P.M.



There are more ways than one to be a leader

AS OUR NAME clearly indicates, we are in the telephone business.

We own and operate 1,896 central offices in 80 states.

We manufacture telephones, switches, relays and other communications equipment, for our own use—and for the 4,400 other "independent" telephone companies in the United States.

And while — by the yardstick of size — we cannot claim to be the leader, we find ample opportunity for leadership in other ways.

Take the telephone pictured here as an example. It is our own design.

At first glance, it may look quite a bit like other modern telephones.

But you will find three important differences.

The surfaces just above the dial on each side are contoured to guide the mouthpiece-receiver or "handset" into place unerringly.

An extra quarter of an inch is added to the tapered mouthpiece and earpiece.

And the cradle which receives the "handset" is lower in front than in the rear.

The result: It is almost impossible for an "off-the-hook" interruption to service to happen.

This is, as we said, one example of how we seek to do whatever we do better than it has been done before.

And this same ambition guides every phase of our operation, from the development of better equipment for telephone central offices, to the courtesy-training of the people who represent us in dealing with our customers.

CONGRATULATIONS

TO

CAL POLY

On their 26th Anniversary
Of Poly Royal

MAINO

Construction Company

Inc.

2238 So. Broad St.—Liberty 3-7411

GENERAL TELEPHONE

One of the World's Great Communications Systems





REPORTING FOR DUTY—These five lovely lasses were chosen to reign over the annual R.O.T.C. Military Ball, by the Cal Poly student Battalion. They are, left to right, Susan Graves, Home Economics, Visalia; Jeannette Bradley, Agricultural Journalism, Palo Alto; Jo Simons, Home Economics, Long Beach; Virginia Repchler, Home Economics, Pomona; and queen Carol Nussbaum, Elementary Education, Los Angeles.

Future Teachers in Action Shown by Education Majors

As thousands visit Poly Royal today and tomorrow, majors in the Cal Poly education department invite the public to view pictures and displays of education majors in action in classroom 15.

"The displays convey every phase of education from the elementary through secondary levels, and show 'learn by doing' activities of the college students," said Barbara Frink, chairman of the department's Poly Royal committee.

"There is a display in art consisting of ceramics, posters, and cloth printing," Mrs. Frink continues. "Pictures showing student teachers in action are posted by vocational agriculture majors. Elementary education majors are displaying books and materials used in working with children of the elementary level. A display in psychology is being presented in connection with methods and uses of hypnosis."

Other members of the committee working with Mrs. Frink are representatives from various fields in the education department: Norma Hazler, audio visual; Lou Ormonds, elementary ed; Carlene Yowell, elementary ed; Nellie Kennedy, elementary ed; Joseph Incandella, elementary ed; Houlan Brown, secondary education; Robert Thornton, vocational agriculture; Ella Frink, psychology, and Pat Weant, California Student Teachers Assn. representative.

"Cal Poly's education department directs students into learning experiences that will develop in them skills and techniques of basic value in the vocation of teaching," explains Dr. Dale Andrews, vocational agriculture instructor. "There is a well-rounded program in education offered."

To provide students with the ability to apply basic principles of human behavior in the areas of mental health, human relations, and learning methods, there are offerings in psychology. Work is offered in art and audio visual methods and material for all students who have need of these skills in their fields."

Cal Poly Printers Open Shop to Poly Royal Guests

By Stan Goff

Cal Poly's Printing Engineering department will hold open house in both the administration and Ag. Ed. building shops, during the 26th annual Poly Royal. Tours through both shops will be conducted by printing students who will explain the workings of the 12-year-old "school for country printers."

Equipment in operation during the open house includes linecasting machines, a typesetter, automatic and hand-fed cylinder and platen presses, and photo-offset equipment. Both the bindery and stereotype departments are also on exhibition.

Visitors to the department will observe the printing of a souvenir brochure, and other literature pertaining to this, the only Printing Engineering department on the west coast.

Mat Pica Pl, Society of Printing Engineers, the official club of the Printing department, will sponsor a penny-pitch for the benefit of the fun-goers at tonight's carnival, according to Don Scoville, junior from Sherman Oaks.

Bob Young, senior from San Luis Obispo, and chairman of Mat Pica Pl's Poly Royal Committee, says virtually every member of the club and department will be on hand to guide guests through the 'shop' and to answer questions.

Colleges Send Queens

All of California's state colleges have sent a queen to reign over festivities at Poly Royal since its birth. San Jose State and San Diego State have had two queens for the event.



EVERYONE WANTS to get into the act and Cal Poly students are no exception. A small group of Aeronautics students sent Cal Poly's first rocket into the stratosphere last fall and as far as anyone knows, it is still floating around out there. Above is a picture of the rocket in flight. Although the rocket's dimensions have been classified as "top secret," the students did say that they fired just the nose section.

In Sincere Appreciation of Your Continuous Patronage, I Thank You
GEORGE VALENTINE

MELODY SHOP

1027 MORRO ST.

SAN LUIS OBISPO

SUPER-WINSTON PRODUCTIONS PRESENTS

Sir Gough and the Real Gore Dragon



GADZOOKS, M'LORD - A CRUSH-PROOF BOX, TOO!

Air Control Show Provides Contrast Of Then and Now

By Edward Ahluki

Have you ever wondered why you don't feel comfortable in a room when the thermometer on the wall says that you should be? These and many other questions will be answered at the Air Conditioning and Refrigeration Engineering department's Poly Royal exhibit in the Air Conditioning Laboratory.

Also featured is the famed Hy Jarvis air conditioning and refrigeration museum, probably the only one of its type in the world, composed of rare and ancient early attempts at man's control of heat and cold.

Visitors will preview a series of rooms designed by Clyde Walters, senior A.C. Major, which will be on display at the western Air Conditioning, Heating, Ventilating, and Refrigeration Exhibit, May 7-11 at Los Angeles.

Walters hopes that his project will give many people an opportunity to enjoy the wonders of modern air conditioning engineering by letting them feel the difference between good and poor design. Information gained from this project may help many people in selecting air conditioning for their own homes.

Students, under the supervision of H. Allan Weckerly, Steering Committee chairman from San Diego, have constructed the mock-up of four "isolated rooms." These rooms will demonstrate how poor design in air conditioning can appreciably affect the comfort of a room's occupants even though each room is kept at the same temperature.

The first room emphasizes heat transfer by convection using air with a relatively high velocity and low relative humidity. Visitors, says Weckerly, will experience a chilly sensation like that encountered at the beach when swimming on a windy day.

The second room shows effects of radiation by use of a heated "plate" mounted on the ceiling. Visitors in this room will sense a body reaction similar to that experienced in a nursery hot-house on a sunny day.

The third room will have a cold "plate" mounted on the ceiling to produce the odd sensation of having heat drawn from the visitors' bodies.

The fourth and final room is designed with proper balance of velocity, relative humidity, and radiation and is sure to bring a smile of contentment on the face of every visitor, Weckerly promises.

Norman Sharpe, head of the Air Conditioning and Refrigeration department, says, "Tests in progress by the American Society of Heating and Air Conditioning Engineers indicate that the mean surface temperature of a room is of equal importance to air temperature or humidity for the comfort of the individual."

Included in the Jarvis museum is a 16-inch fan, known as the granddaddy of all air conditioning. It is powered by the heat of a kerosene lamp. Other ancient pieces of refrigeration equipment to be displayed are a Savage Compressor and a Servel Compressor unit.

Allan Weckerly made the arrangements for the display with Hy Jarvis, president of Recold Corporation of Los Angeles. Assisting him are juniors Glen Ward, Morro Bay, and James Clark, Modesto.

The Air Conditioning and Refrigeration Engineering department, only one of its kind in all the 11 western states, prepares students for the planning, inspecting, testing, and selling of refrigeration equipment and systems. Graduates find employment in the fields of quick freezing, cold storage, and air conditioning of all types.

Electronics Department Featured in Article

Cal Poly's Electronics department, featured in the December, 1957 issue of Western Electronics News, is the "largest undergraduate training program in electronics in the eleven western states." Clarence Radius, head of the department, reports a current enrollment of approximately 650 students, and he predicts a possible 800 students enrolling in the four-year Electronics Engineering curriculum in September of this year.

Industrial Engrs. Invite Glimpse Of Foundry Work

By R.E. McGee

Everything from an exciting glimpse of an operating foundry to the latest in fine office equipment will greet the visitor to the Industrial Engineering department's Poly Royal exhibit.

The department, under the leadership of John Carlson, Valjeo, IE Poly Royal chairman, features among its exhibits actual production processes such as a foundry operation and a machine tool operation. A plastic extruding machine, an example of one of the outstanding senior projects, will demonstrate the skill and imagination so necessary to the Industrial Engineer.

Jack Bowlus, Pacomia, in charge of the freshman class exhibit, is featuring a group of late model office machines. Typical courses taken by the IE student complete the display.

Russ Carlton, Reno, Nev., plans to center the sophomore class exhibit around an operating foundry. Actual production of a cast product is demonstrated to visitors. Included in this exhibit is a typical production process outlining the steps and the tools used in manufacturing a finished product.

Bill Potter, Napa, presents a history of accomplishments as the junior class contribution to Poly Royal. Main feature of this exhibit is a model of the grand

New Engineering Building Forms East Wing of Quad

by Bill Cockshott

Engineering Building, the newest building on campus, is accepted by all students but, other than those who have classes there, very few realize all that it contains.

The building houses Electronics and Electrical Engineering Departments and some mechanical, aeronautical, and

prize winning boat built for the 1957 homecoming parade.

Feature attraction of the senior class exhibit is a plastic extruding machine, capable of making everything from garden hoses to plastic soda fountain straws. Rich Puterbaugh, San Bernardino, is in charge of this and many other interesting senior project displays.

For the hungry youngster, the IE department features hotdogs and cold drinks. For the older folks there is a place to sit down and have a cup of coffee. This is available at an outdoor booth. The concession is run by the IE wives club under the direction of Jack Hitchcock, Pasadena.

Youngest department at Cal Poly, the Industrial Engineers under the direction of Millard J. Foster have a record of accomplishments that set them apart from the ordinary. The department was established in the fall of 1956 to take care of the growing number of students interested in engineering but wanting to acquire a good background in management as well.

architectural classes. Completed in the fall quarter, work began early in 1956.

The building, costing \$1,020,000 is designed for future use when enrollment grows. Electronics department has already reached its capacity of 700 students, with the Electrical department very rapidly gaining its capacity.

Upon completion of building plans on campus, the Engineering building will form the east wing of the Engineering Quadrangle, with the west wing to be constructed in the area now occupied by the cubicles. Mechanical Engineering laboratory and Air Conditioning buildings will form the other two corners.

Something unique is a service tunnel running the length of the wings under the floor for all wiring and piping servicing. To adjust for expansion, trenches were made before final completion of the main building for connecting service tunnels for any future additions.

In the middle wing of the building the Electronic Department is housed while the Electrical department is in the South

Printers Invite Guests

Cal Poly Printing Engineering majors invite Poly Royal visitors to tour the only print shop of its kind on the west coast.

Guests will see the machinery on which this newspaper was printed, as well as other interesting work done by printing students, according to Bob Hewington, printer publicist. The print shop is in the basement of the administration building.

wing. Drafting rooms are situated in the North wing while the Mechanical Engineering department has drafting rooms and a materials test lab. Architecture and Aeronautical Departments each have two drafting rooms.

Spaced throughout the building are darkrooms for departmental use, classrooms, drafting rooms that are proportional to the size of the department and class, project rooms and small workshops for each department.

The labs are set up so they give students an idea as to ideal working situations.

Electrical distribution is controlled in the Electrical Department's machinery lab which has a control panel that is capable of directing any current of electricity or any amount of voltage to any room in the building.

All of these features combine together to form the Engineering Building which will be a part of the plan for a centrally located area for all departments with the exception of the Aeronautical Engineering which will remain at the hangar area.

You'll be sittin' on top of the world when you change to L&M.



Light into that

You get a more effective filter on today's L&M

Look for the patent number... on every pack... your assurance that you are getting L&M's exclusive filtering action



Live Modern flavor

Best tastin' smoke you'll ever find!

Put yourself behind the pleasure end of an L&M. Get the flavor, the full rich taste of the Southland's finest cigarette tobaccos. The patented Miracle Tip is pure white inside, pure white outside, as a filter should be for cleaner, better smoking.

©1958 LACOSTY & MYERS TOBACCO CO.