



Norm Elledge takes spill while checking out some of the endurance trail to be used in Sunday's motorcycle Enduro Contest sponsored by the Cal Poly Penguins. Those who wish to observe the riders should be at the starting line in Poly Grove Sunday morning at 8 A.M. Maps of the route will be distributed after the last rider has started.

## Cyclists Vie For Honors In 160 Mile Run Sunday

An estimated 70 motorcycles will roar out of Poly Grove two at a time shortly after 8 A.M. Sunday morning on their way to

the toughest Enduro ever set up by the Poly Penguins' Motorcycle Club, says Leroy Hooper, Club Officer.

The run covers 160 miles and is not a test of speed, but rather of maintaining a pre-set average for each leg of the course. Much of the course is laid out over a cross country route of the roughest terrain passable by motors.

It is estimated that only 80 per cent of the starters will complete the course.

Each rider will start out with 1000 points. He will lose two points for every minute he is early to a check point, and lose one point for every minute he is late.

The course will be revealed just before the run begins. Anyone wanting to see some rough riding should be in Poly Grove before the run starts to find the best observation points.

Trophies for the event are being given by Universal Auto Parts, Blake's Printery, San Luis Cyclery, San Luis Trailers, a motorcycle club, and the Owl Motorcycle Club.

### Valentine's Dance Tonight

Newman Club will sponsor a Valentine's Dance tonight at 8:30 P.M. in the Mission High School cafeteria. The dance will be a dressy sport affair.

### El Dorado Elects Officers

John Liles, Ag Engineering major from Madera, was recently elected president of El Dorado, a freshman dormitory. Other officers elected were: Gary Rogers, Physical Education from Nimi, vice-president; Don Wilbur, Social Science from Albany, New York, secretary; and John Hutchison, Ag Engineering from Madera, treasurer.

## Traffic Violations Burden Campus Security Officers

A sharp increase in traffic violations is over-burdening the campus security department. Chief George Cockriel says 20 citations issued daily has been normal prior to this quarter. We are now averaging 80 citations each school day. All these are so flagrant they cannot be excused. Some of the problem areas listed by Security are:

1. Resident student parking in non-resident lots. At registration, a student's parking area is clearly defined.
2. Parking in no parking zones. The stripes in parking lots are to prevent smashed fenders which often occur when a car is parked improperly and blocks another's passage. These incidents are sharply declining, according to

3. The Post Office area. Parking on the wrong side of the street, leaving motors running, etc. Two students have been injured here in the past year, resulting in civil suits against the car owners and operators.
4. Failure to turn front tires into curbs when parked on hills.

—See Violations, page 4

# El Mustang

CALIFORNIA STATE POLYTECHNIC COLLEGE

Vol. XIX, No. 23

EL MUSTANG

Friday, February 14, 1958

### Lovett Sees No Epidemic Of Measles, Chickenpox

Students should not fear any breakout or epidemic of measles or chickenpox on campus, says Health Center Officer Dr. Earl Lovett. According to Dr. Lovett, this is the season for measles and chickenpox.

"We expect a few more cases in the next two or three weeks. At present we have two measles and three chickenpox cases in the health center," Dr. Lovett said.

The health officer added that an average number of Asian flu cases have been reported. The low count is probably due to the college's vaccination program, he said.

Students are urged to obtain flu shots in an effort to avoid the expected spring epidemic of Asian flu. Flu shots are available at the health center, 8 A.M. to 5 P.M., Monday through Friday.

### Three Dances On Weekend Schedule

By Polly Gadabout

This is, in case the word hasn't gotten around, the last day of mid-terms, and to celebrate the occasion there's a movie at the Campus Bijou. (Looked up the word in a book written by some guy named Webster and he says that a bijou is a jewel. Nothing else need be said.) "I Was A Male War Bride" is the name of this week's production.

Saturday's going to be a busy, busy day around here. There's a top-notch speaker in the afternoon and three dances in the evening. Dr. A.C. Redfield, nationally known oceanographer, will speak here at 4 P.M. in Science Building E-33 on "The Proportions of Things in the Sea."

College Union is sponsoring "Sweetheart Swing" at the TCU at 9 P.M. Out at Trinity Hall in Edna the Riding and Roping Club is sponsoring another 9 P.M. dance. The Poly Playboys will furnish music for this shin-dig. Yep, same time, 9 P.M. and the Aero Wives Club is putting on another dance at the hangar.

College Hour Thursday morning will feature Cal Poly's own band and Glee Club.

Feb. 17 to 21 is National Engineering Week as any Poly Engineer can tell you. Likewise all Future Farmers well know that Feb. 20 to 26 is National Future Farmer Week.

### Soc. Sc. Teachers Plan Spring Workshop Here

Cal Poly will be the site of one of twelve Social Science Teachers Workshops to be held in California this spring.

Teachers of social studies in elementary schools, high schools, and junior colleges from King City in the north to Santa Maria in the south will attend to examine proposals by the state to revise the whole social studies curriculum here on March 23, according to Workshop Director Dr. Cruikshanks.

This group will review new suggestions on social studies made by the state and send their reactions to the state convention for further examination.

Another workshop is scheduled here this summer for a more detailed analysis using more advanced information collected by the state convention.

### Swing Your Sweetheart Tomorrow Night at TCU

Two trophies will be awarded dancers in contests to be announced at the Sweetheart Swing, says Betty Rolfe, president of the Student Wives Club.

The affair is scheduled for the Temporary College Union. Dancing will be from 9 to 12 P.M. Music will be provided on record by the top dance bands of the nation, and all seeds have received special invitations.

Homemade refreshments will be available.

## Boxers Host Nation's Top Team Tomorrow

Idaho State, the nation's number one collegiate boxing team and its five 1957 NCAA champions, tangle with Coach Tom Lee's Mustangs tomorrow night at 8 P.M. in Crandall gym.

The visiting Bengals are nursing 13 consecutive dual-



### Marine Expert Will Talk Here

Dr. A. C. Redfield, Senior Oceanographer Emeritus at Woods Hole Oceanographic Institution, Massachusetts, will discuss "The Proportions of Things in the Sea" here tomorrow at 4 P.M. in the Sci. Bldg., Rm. E-33.

The Philadelphia born professor received extensive education abroad including universities in Germany and in Canada, and honorary degrees from Norway and England.

Dr. Redfield has lectured on Oceanography to 16 western colleges and universities since Jan. 1958 and following his lecture here will continue to speak to students of California, Colorado and Hawaii.

Among topics included in his lecture will be nutrients of the oceans of the world, how they become concentrated, and other factors such as light, and temperature and how they affect ocean fertility.

### ETHIOPIA FILMS AT IRC

Color slides of Ethiopia will be shown at a meeting of the International Relations Club scheduled for Mon. at 7:30 P.M. in Adm. Rm. 208.

## Six Prominent Pastors Featured During RILW

Six prominent religious leaders will be featured speakers of Religion in Life Week, the last week of Feb. They are, The Reverend Ronald B. Goerss, Rt. Rev. Daniel J. Keenan, The Reverend Edgar E. Toews, Rabbi Milton L. Shulman, Canon Charles M. Guilbert, and Mr. Melvin J. Friesen, says Reverend Ray Heer, Inter-Faith Council Advisor.

The Reverend Roland G. Goerss, a 6 ft. 9 in. Missouri Synod Lutheran, has special interest in the relevance of Christian faith to life, Christian campus life, the meaning of faith, and preparation for family life.

The Retired Reverend Daniel J. Keenan is a Roman Catholic, a former Army Chaplain, organizer of three high schools, and a member of Elks and Lions. He will speak on following Jesus, Christian vocation, and prayer and worship.

The Reverend Edgar E. Toews, is pastor of the First Presbyterian Church of Moses Lake, Washington. He is prominent in Moses

meet wins dating back to 1955. The Pontello punchers made a shambles of the '57 NCAA meet—collecting 59 team points, 47 more than second place Washington State. The locals will be out for win number two of the year, and have a pair of defeats (both from San Jose) on their 1958 record.

The invaders from Idaho have a 4-4 deadlock with Sacramento State this season. This indicates little because the Capitol City crew is rated among the top collegiate clubs in the country.

Most experienced Bengal is 180 pound Ron Rall. He is a three-year letterman. The best counter puncher is Bill Hayes, 147. Dale Leatham, 178, is a NCAA champ, and is a three-year football letterman, too. The cream of the collegiate heavyweight crop is USC's Harold Epsy. A 1956 Olympic alternate, Epsy has lost but two bouts in his career.

The Poly sluggers lost a 6-4 decision to San Jose State last Saturday night in the local ring. The hometowners, in losing, made a strong showing and improved upon the earlier 7½-1½ loss SJS handed them in January.

Probable starters against the Bengals will be Bob Sals (118), Ernie Martinez (122), Walt Bailey (129), Bob Alvarez (147), Sam Marques (155), Don Adams (165), Don Tessier (175), and heavyweight Gordy Martinez.

Results of the Saturday SJS fights follow:

118 pound class—Sals drew with Spartan Bob Toews. Sals made strong third round showing. 115—Tessier to San Jose. 125—SJS's Dave Wilson won TKO.

—See Boxing page 2

### College Musicians Perform Thursday

A Music Department assembly Thursday will be the first public appearance of the Poly Women's Glee Club this year. Band, String Ensemble, and the Men's Glee Club will also be featured.

Included in the selections to be presented are "Hi-Fi Concert March," "Brighton Beach," "Burst of Flame," "Parade of the Wooden Soldiers," "Griddle Cakes," and "Rolling Hills."

The Women's Glee Club is composed of 18 members, 15 of which are returning members. Last year the women performed for the SLO Rotarians, FFA Conference, College Hour, Home Concert, and the Faculty Women.

Lake and Washington State activities. He will speak on Christian faith, Bible study, and Christianity and race relations.

Rabbi Milton L. Shulman is the Jewish representative to Religion in Life Week. He served 26 months in the Canadian Merchant Marine, and speaks on radio twice monthly. He is interested in science and religion, economic justice, and the meaning of faith.

Canon Charles M. Guilbert is the Episcopal rector of St. Clement's Parish, Berkeley. He was formerly dean of St. Stephen's Cathedral, Portland. Canon Guilbert's interest in Bible study, the meaning of Christian faith, and preparation for family life.

Melvin J. Friesen, United Brethren layman, is presently an English instructor at Strathmore Union High School. He served as a chaplain in the U.S. Army for two years. Mr. Friesen's interests lie in Christian campus life, and Christianity and race relations.



## Coach Hughes Says

Drop Kicker May  
Make Poly Squad  
Next September

Guess I'll develop a drop kicker! This is the comment of Roy Hughes, Poly's head grid brain about the new football rules which go into effect next fall.

Hughes was discussing the change which moves the ball back to the three yard line instead of the two on point after touchdown tries. The rule also gives a team two points if it runs or passes for the extra point, and one point if the PAT is kicked.

The "Silver Fox's" idea in developing a drop kicker is to have the team line up in a short punt formation, giving the tail back an opportunity to pass, run or drop kick.

"We will still have to have a place kicker," Hughes thinks. "It is tough to get those last three yards." Hughes also feels there may be more coaching from the sidelines.

The Fox likes the new substitution rule which allows any player to re-enter the game in one quarter. Previously the rule allowed only the starting player to re-enter the game during the quarter.

"The rule will benefit the small college," Hughes predicts. "We will be able to get our better men in more frequently on defense and offense. Larger schools with big squads platoon anyway."

The Mustang coach just returned from the American Football Coaches Association meeting and the National Collegiate Athletic Association meet in Philadelphia, Pa. As a member of the important NCAA television committee, Hughes says the committee is concerned with the growth of "subscription TV" and view with alarm its possible inroads on the revenue of collegiate football.

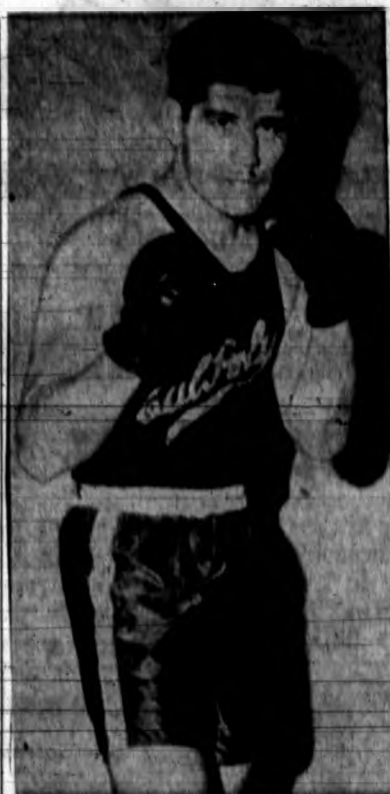
Cagers Look for CCAA  
Win on Two-Game Tour

Still looking for that initial conference triumph following our attempts, Poly's Mustang cagers travel to the Southland this week end for a pair of CCAA contests.

Losers to San Diego State, 82-60, last Saturday, the local coppers of Ed Jorgensen have an opportunity to register their first CCAA win against Long Beach State, tonight. Tomorrow, the Mustangs encounter the lanky and leaded Los Angeles State Diablos.

**Poly Underdog**  
Tonight's issue in Long Beach will find the hometowners attempting to pull the '49ers into the league cellar—for company. LBS edged the Mustangs 68-60, here in January, but only after 38 minutes of nip-and-tuck action. Both sides boast speed and a sprinkling of experienced talent. Likewise, both lack height and depth.

LA State, however, poses other problems. Though Jorgensen's lads lost a close 71-66 match to the Diablos early in the year, the green



**A BIG TASK** is ahead of Poly's heavyweight boxer, Gordy Martinez, tomorrow night when the sluggers of Tom Lee host the Idaho State College Bengals in Crandall gym. The 9 P.M. affair features live 1957 NCAA champions—all ISC ringmen. Martinez will go against Harold Espy, a 1956 Olympics alternate, who has but two setbacks in his ring career.

Weather Hampers  
Baseball Workouts

Wet grounds caused last Saturday's varsity baseball intersquad game to be cancelled. The squad of forty horsehiders worked out on a "dry corner," conducting a lengthy practice session.

Coach Bill Hicks, who will out the group to 30 as soon as possible, indicated the outfit would try again—weather permitting—this Saturday at 10 A.M.

Pre-season workouts have been hampered greatly by rain and wet grounds. The Mustangs open 1968 play Feb. 22 against an Alumni nine.

Wrestlers Visit Farm;  
Host UCLA Wednesday

Though tonight's match at Stanford stands between Coach Heldon Harden's Mustang wrestlers' fifteenth consecutive triumph of the year, biggest news concerning the undefeated Poly matmen is that the outing with UCLA, originally slated for Bruinville Feb. 11, has been postponed until Wednesday, Feb. 19, and will take place in Crandall gym.

Stanford is expected to give the Mustangs little trouble in this next-to-last dual meet of the season. Safely by the Palo Alto squad, only the Uelans stand in the way of an undefeated year for the Hardennmen.

## 423 Points

The locals swamped Santa Clara a week ago, for win number 14. Stanford was defeated by the Santa Clara group. The Mustangs have managed 423 points this season, compared to 46 for the opposition. It is not unlikely the hometowners will add to that total tonight on the Farm.

While several top Mustang grap-

plers were participating in the San Diego NTC tournament last Friday, Harden was prepared to throw several JV's at the Santa Clara bunch. However, Bob Mobley (180) and Darwin Mc Gill (Hwt) didn't have to battle as the Broncos forfeited the brace of bouts. Norm Geiger, 187, and Lynn Dyche, 177, both posted wins—Geiger pinning his foe.

## UCLA Strong

The regulars—Howard Bryant (125), Bill Corcoran (147), Jerry Canfield (157), and Bob Machado (167)—had little difficulty in overpowering the Broncos. Bryant, Corcoran, and Machado pinned their opponents.

The UCLA team will feature a pair of seasoned performers. Footballer Harry Billington, 177, holds the National AAU Greco-Roman crown, and is a two-time PCI champ. Veteran heavyweight Clint Whitfield is a '66 PCI runner-up. The Uelans boast five returnees, and have only two "unknowns" on the club.

Poly Foursome  
Second In NTC  
Wrestling Meet

Defending PCI champion Oregon State barely edged four Cal Poly grapplers for tourney honors in last week-end's star-studded San Diego NTC Invitational tournament. The "full-strength" OSC squad emerged with a 14-10 lead over the short-manned Poly entry.

The Mustang varsity, while the four regulars were South, pounded out a 88-0 decision over Santa Clara.

Other teams competing in the NTC affair included UCLA, San Diego Rowing Club, Camp Pendleton, Inglewood YMCA, San Francisco CC, San Diego State, Arizona, and an all-star bunch from Mexico.

Poly's Tom Hall copped the 155.5 pound crown, Del Seales drew the runnerup slot at 191 after a tie match with defending PCI champ, Bill Dustin of OSC. 125 pound Harold Simons placed third, while previously undefeated Pat Lovell grabbed a fourth place.

## Boxing

(Continued from page 1)

over Ernie Martinez. Time: 45 sec. of third round, 180—Walt Halley found somebody that could "absorb" a left hand. Took decision over Spartan Weldon Stroud. 147—Poly's Sheldon Green lost split decision to Jerry Ford. Ford had to come from behind to win. 155—Jack Goodridge, 155, received a disputed draw over Sam Marques. Sam's third round enabled the Spartan to tie. 165—Don Adams had little trouble with 155—Ed Howard, notched easy triumph. 175—Don Teasler showed improvement in overpowering Spartan Fred Huron. 185—Not one spectator envied Poly's Gordy Martinez having to face Archie Milton. The Mustang looked good at times but the enemy's experience proved too much.

## Todd's Bear Service

Wheel Aligning—Balancing  
Tire Truing  
Front End Rebuilding  
Phone LI 3-4322  
306 Higuera St.

## Discount to Poly Students

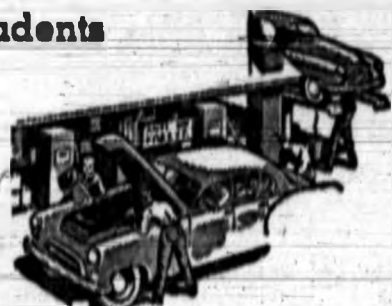
**H. Wills**  
NORWALK SERVICE

Batteries \$7.45

Johnson Outboard Motors

Glasspar Boats

Santa Rosa and Higuera



Wheel Aligning  
Tires—Tubes  
Accessories  
Motor Tune-up  
Overhauling

We Give S&H  
Green Stamps

EVERYTHING  
FOR THE  
CAMERA FAN

**CAL  
PHOTO**

Camera Supply

899 Higuera

Phone LI 3-3705

24 hr. Service

Ag Engineering Wives  
To See Floral Display

Ag Engineering Wives will meet Feb. 18 at 7:45 P.M. in Lib. 118. Guest speaker, Dorena Kernik of Wilson's Flower Shop, will give a flower arrangement demonstration. The floral arrangements will be sold after the meeting with profits going to the Club treasury. Club by-laws will also be presented for approval.

## Beautiful — Spacious

HILLTOP  
TRAILER PARK

• 3 miles N. of Atascadero  
• Special Rates to Students  
possible part time work in  
exchange for rent.

Phone Atascadero 232-J

## Nothing Down

\$100 per Week  
On  
All Portable  
Typewriters

## Sales &amp; Service on

• Smith-Corona Typewriters  
• All makes Electric Shavers  
• All major Adding Machines

## Bob Walker's

Smith-Corona Dist.  
785 Marsh LI 3-1827



San Luis Obispo  
851 Higuera St.

**LEVI'S**

## GREEN BROTHERS

Known for Good Clothing by  
Poly Students since the turn of the century  
—We Stand Behind Our Merchandise—

Manhattan • Pendleton • Crosby Square  
"Munsingwear"

We give S&H Green Stamps 871 Monterey St.

## BEE HIVE CAFE'S Player of the Week



MIKE SIMMONS

Dutch will buy Mike a steak dinner at

## BEE HIVE CAFE

CORNER OF MORRO AND MONTEREY

("ask your friends, they all know where the Bee Hive is")





## To Say The Least

by Alton Pryor

I CERTAINLY do not intend to turn over the writing of this column to my readers, (there are some who undoubtedly believe I should) however, when opinions come to me which I believe the readers should see, both pro and con to my views, I will print them. Below are letters received in answer to last week's column.

Dear Mr. Pryor:

When will you learn that a good newspaperman doesn't have to cut people to be a good newspaperman?

We are sick and tired of these articles seemingly directed at getting people's goat.

Before the end of the year we sincerely hope to see a much needed improvement in your column—or no column.

Yours truly

Miss Elsie Allen

Miss Judy Modena

In attempting to be a good newspaperman, I shall continue to give what I believe to be the opinion of the majority, A.P.

Dear Mr. Pryor:

You certainly are not alone in your views on women's apparel. Ogden Nash expressed it in his poem, entitled "What's the Use", like this:

Sure, deck your lower limbs in penis;

Yours are the limbs, my sweetling.

You look divine as you advance—

Have you seen yourself retreating?

signed: C. A. Balch

AND NOW... let's end this on a happier note.

Teacher: "Now Kitty, tell the class the difference between a lion and a panther?"

Kitty: "Thath eathy, Mith Brown. A lion roarth; and panther what I have on."

★ ★ ★

Dear Mr. Pryor,

A subject of note came by me one day and I grabbed off the gist of it. One fellow in a group of El Corral coffee-drinkers had no cup before him, only a small piece of paper.

He looked so content that it compelled me to stop and ask why he was so happy without his usual afternoon cup.

Seems he was just waiting for the opportunity. It started with a snide remark about the java and broke into a running account of how he had taken a fresh cup to the chemistry lab to have it analyzed. That was Friday, Monday came, no report.

Tuesday? Same. (All cups down, the table hushed!)

Today, . . . it came.

What does it say?

Here it is on the table; read it.

"Good news Bob. Your mouse is pregnant!"

Well, anyway, that's what the man said.

(signed) Jim Counters

And that is, To Say The Least.

### English and Speech Club Present "Fumed Oak"

The English and Speech Club will present "Fumed Oak," a one-act comedy by Noel Coward, as

part of its Poly Royal exhibit. announced Club President Harold Young. Will Penna, student producer-director for the comedy, asks interested students to watch for announcement of the first reading, to be held as soon as playbooks arrive.

### PLACEMENT CALENDAR

Friday, February 14 SHELL OIL COMPANY Mr. J. H. Prior, West Coast Personnel and Industrial Relations, heads the following recruiting team:

Mr. C. R. McKee, Personnel Manager, Sacramento Marketing will interview seniors interested in Petroleum Sales

Mr. L. Porter, Personnel Manager, San Francisco Marketing will interview seniors in Arch, Aero, EE, IE, ME

Mr. A. P. Gupta, Shell Manufacturing will interview seniors in EE, ME

Mr. G. Holliday, Shell Production will interview seniors in EE, ME

Mr. F. D. Kuensly, Shell Chemical will interview seniors in Ag, Chem, EE

Mr. J. C. Ellis, Shell Research will interview seniors in ME, Phys Sci

Monday, February 17 GLENDORA SCHOOL DISTRICT Mr. Sterling Fox will interview Elem Education majors interested in teaching positions in Glendora.

Monday, February 17 J. I. Case COMPANY Mr. Edward F. Hyland, Manager will interview seniors in Ag, ME

Monday Tuesday February 17-18 CITY OF LOS ANGELES Mr. Gerald O. Noll, Mechanical Engineer, Steam-Design Section, will interview seniors in EE, ME

Also, SOPH and JUNIORS in same majors for summer work

Monday Tuesday February 17-18 SAN FRANCISCO NAVAL SHIPYARD Mr. Ronald Connolly, Electronics Engineer will interview seniors in EE, EL, ME, Arch, IE

Tuesday, February 18 SOUTHERN CALIFORNIA EDISON Mr. C. T. Maloy, Personnel Recruitment Officer will interview seniors in EE, ME, Math, Phys Sci, Arch, Structural

Tuesday Wednesday February 18-19 GENERAL MILLS, INC. Mr. John R. Sampson, Personnel Department, will interview seniors in EE, ME, Ag, Chem, Ag, EE, Food Sci.

Wednesday, February 19 FEDERAL TELECOMMUNICATION LABORATORIES INTERNATIONAL TELEPHONE & TELEGRAPH CORP. Representatives will interview seniors in EE, EL, ME, Phys Sci, for work in Field Engineering Sales and Foreign Assignments; Manufacturing, Production and Production Development; Electronic Research and Development.

Thursday, February 20 AIR RESEARCH MANUFACTURING COMPANY Mr. R. K. Richardson, Representative Engineering Personnel will interview seniors in Aero, EE, EL, ME

Thursday, February 20 STATE COMPENSATION INSURANCE FUND Mr. H. L. Freedman, Supervisor of Business Services, will interview interested seniors in all majors

Thursday, February 20 LINDE AIR PRODUCTS COMPANY Mr. G. H. Daynoff, Recruiting and Training Coordinator will interview seniors in Arch-Structural EE, IE, ME, and Phys Sci

Thursday, February 20 COLUMBIA-GENIVA STEEL Division of U. S. Steel Corporation Mr. D. B. Greenwood, Manager Personnel, and Mr. Don Hyde, Supt.

### BANKS RADIATOR and BATTERY SHOP

STUDENTS, FACULTY DISCOUNT

Red Building, 20 years  
AT 1011 Toro St. San Luis Obispo

### New Arab Club Formed Here

With the purpose of strengthening relationships between Arab and American students, a new Cal Poly Arab Club has been formed. The club, now with 21 members, meets the first and third Friday of each month.

The Arab students invite anyone interested in learning about their country. Meetings are planned to feature motion pictures, slides, and talks on the Arab states

of Industrial Relations, Torrance Works, will interview seniors in Arch-Structural, EE, EL, ME, Phys Sci

Thursday, February 20 ELECTRODATA Mr. Robert A. Alexander, Personnel Director, will interview seniors in EE, IE, and ME

Friday, February 21 RATH PACKING COMPANY Mr. Ken Schreiner, San Francisco Branch Manager, will interview seniors, and others, interested in production training programs as well as sales training programs.

Friday, February 21 U. S. ARMY CORPS OF ENGINEERS, Los Angeles District Mr. Joseph G. Loomis, Chief, Employee Civil Section, will interview seniors in Ag, Arch, EE, ME

and the habits, customs and points of view.

Glenn Rich of Ag Engineering Department faculty is advisor.

### HORSESHOE EQUIPMENT

for Poly Students

Farm Supplies

AND

Equipment

John W. Hanna

1119 Garden St.  
San Luis Obispo

AMP AUTOMATIC PINSPOTTERS

PHONE 148

ATASCADERO BOWL

ATASCADERO, CALIFORNIA

OPEN BOWLING 6 TO 8 P.M. & AFTER 10:30 P.M.  
SAT. AND SUN. FROM 1 P.M.

BLACKIE and OLE  
ARE BACK

at the

T-BONE GRILL

Next to Fred Watson's

1041 Higuera  
LI-3-9927

PIZZA

Served Daily from 6 PM  
Orders to go from 2 PM

serving five  
types of Pizza  
or combinations

STEAKS

from our broiler  
served as you like them

also - short order menu  
Plus - Daily Special

T-BONE GRILL

1041 Higuera

OPEN DAILY AT 11 AM

LI 3-9927

### -ENGINEERS-

Unlimited opportunity awaits you in

LOS ANGELES

THE CITY OF THE FUTURE

Civil

Electrical

Sanitary Engineers

Are needed for the challenging work of planning, designing, building and operating one of the largest water and electric systems in the world.

Our engineering representative will be on campus

Arrange with the Placement Office for an interview appointment.

CITY OF LOS ANGELES  
Department of Water & Power



Banana Split

Mighty Mustang

TRY SOME OF THE GOODIES AT  
BARR'S DRIVE IN

Restaurant

On Highway 1 4 Blocks from the campus

Open 7 A.M. to 1 A.M. Daily



## The Student's Voice

Contributions to "The Student's Voice" should not exceed 150 words. Editors reserve the right to edit and to condense all letters received and to decline publishing letters that are, in the opinion of the editor, in poor taste or libelous. All communications must be signed by the writer. If a non de plume is desired, such as a signature, it is permissible, but the editor must know the true name of the author.

Dear Editor:

Will Penna's supercilious thesis on "El Corral" vulgarity, its causes and cures" positively gagged me.

After I scraped off that metaphoric layer of old-world charm and high-browed sophistication, even my high school French was of little aid in translating his enshrined mass of cloche-ridden quotations and parenthetical phrases.

The impression I get from this wandering name-dropper is that he actually feels he's doing us all a great favor. We're supposed to cling to every word of Penna's sage advice while he basks in the reflected glory of the philosophers who really said all these things. Finally, one could almost smell the smoke of Penna's favorite Briar and hear the numerous chuckles, sighs and yawns that must have emitted from our self-styled avant-garde spokesman as he sought vainly to plant his literary feet firmly in the sands of journalistic immortality.

Gil Pierce

Dear Editor:

During the past few weeks it has been my pleasure to read the witty letters of Bett R. Vieu, Rid O. Vue, and Will Penna. I did not realize that this campus could boast of such literary individuals.

Miss Bett R. Vieu's letters have been especially noteworthy for the phrasing and sentence structure she employs. I have not seen such clever wording often in American literature.

Miss Bett R. Vieu is indeed a fresh and brilliant talent.

Rid O. Vue's contribution, while not as well done as Bett R. Vieu's, shows the same concern for the well chosen word. I must congratulate him on his love for our language.

Rid O. Vue is indeed an author of great promise.

I have saved my loudest applause for that true man of letters, Will Penna. Although extremely modest, Mr. Penna cannot hope to conceal his wealth of knowledge when he reveals his ability to express himself with such great power.

Will Penna is indeed a highly educated and wordly person.

"Mark Anthony"

Dear Editor:

I would like to go on record as agreeing wholeheartedly with Alton Pryor's campaign to change trouser wearing women to dress wearing women.

Being mainly a red-blooded American male, I much prefer seeing femininity displayed in feminine attire rather than in Levi's and vests.

It is interesting to notice that while none is allowed in the cafeteria bare footed and girls are asked to leave when they show up with a scarf on, no complaints are heard when they arrive decked out in extremely odoriferous farm clothes. It does wonderful things for one's appetite. I will add that the girls are not the only offenders of this least complaint.

"Methinks" something ought to be done.

Tom Boyden

Dear Editor:

Plaudits to Pryor---he's getting some meat into his column again.

Let's hope that A. P.'s blast at the girls' pants kick is fruitful, since I am one of those who are admirers of feminine females.

Jim Moray

### HURLEY'S Pharmacy

Local Agency  
Revlon - Herb Farm - Max Factor  
Yardley - Helena Rubenstein  
Old Spice



Magazines Stationery  
Sundries  
Students Checks Cashed  
896 Foothill Blvd.

### VIOLATIONS

(Continued from page 1)  
campus. The results of such an incident can be tragic.

5. Over-staying parking time in privilege parking areas, such as 10 minute zone. Cockriel said, "Last week, one student parked over two hours in such a zone. These areas are for the convenience of everyone. This year, seven runaway cars have resulted from this, here on one. Abuse by a few students makes undue hardship for all the college family."

6. Students using abusive language toward Security Officers. Andy, the best-known of our security officers, had only turned in four students for disciplinary action in ten years up to this quarter. He has had to turn in three this quarter due to the flagrancy of the cases.

7. Students working on cars in campus areas other than the student garage. Campus rules forbid this. The new garage facilities will furnish tools and advice for 25 cents per hour.

"Although we have 8500 cars on campus at any one time during school hours, there is ample parking space," Chief Cockriel says. "Lots M and J, near the Produce Store, and Lot A, behind Deuel Dorm, always have plenty of spaces. As the College grows, students are just going to have to walk a little farther."

As a matter of interest, donations are doubled with each repeat, to the point where a violation costs four dollars, if paid more than five school days after issuance. The money goes into the General Fund of the Associated Student Body.

"Just a good, honest beauty service"

Young's Beauty Shop

E. S. and B. G. YOUNG, Props.

Phone LI 3-4084

COLLEGE SQUARE  
DRY CLEANERS  
LAUNDRY

892 Foothill Blvd.  
Open - 8 till 6  
NEAR COLLEGE

—The Last Word in Hair Styling—

## The Helen Rose Salon

THEDA DUART Prop.

Phone LI 3-6201

1112 Garden Street

San Luis Obispo

LOVELY

## ROSE BOWL COURT

FINEST MOTEL IN SAN LUIS OBISPO

FREE TELEVISION  
IN EVERY UNIT



1575 Monterey Street

U.S. 101

Liberty 3-5017

### STUDENT SPECIALS

Unfinished Furniture  
Bookcases—Desks—Record Cabinets  
Chests of Drawers—Picture Frames

Wrought Iron Legs—for Study Tables  
Book Shelves—Coffee Tables

Complete line of GLIDDEN Paints  
Enamels—Stains and Varnish

Come on in—Get acquainted and  
let us help you with any  
problems you have.

Gold Bond Stamps

GLIDDEN PAINT CENTER

George L. Sellers

COLLEGE SQUARE SHOPPING CENTER

SAN LUIS OBISPO, CALIFORNIA

## El Mustang

California State Polytechnic College

(San Luis Obispo Campus)  
Published twice weekly during the school year except holidays and examination periods by the Associated Students, California State Polytechnic College, San Luis Obispo, California. Printed by students majoring in Printing Engineering Division. The opinions expressed in this paper in signed editorials and articles are the views of the writers and do not necessarily represent the opinions of the staff, views of the Associated Student Body, nor official opinions. Subscription price \$2.00 per year in advance. Office, Room 81, Administration Building.

Martin L. Michie, editor  
Dave Kumpf, associate editor  
Lyron Jeffers, feature editor  
Harold Young, sports editor

Next issue of El Mustang will be published on Tuesday, Feb. 18. Copy deadline is 5 P.M. today.

### CAL PARK LAUNDROMAT

WASH \_\_\_\_\_ 65¢  
Dry Fold \_\_\_\_\_  
SHIRTS \_\_\_\_\_ 25¢  
Hand Ironed \_\_\_\_\_  
PANTS \_\_\_\_\_ 35¢  
Hand Ironed \_\_\_\_\_

LI 3-9815

Two Blocks from Poly  
Corner of California & Highway

## L & F MOTOR CARS

222 West Main St.

Santa Maria, California

AUSTIN HEALEY - M. G. - MORRIS

Service & Parts

Dale Winslow, Mgr.

Phone WA 5-7111

Now is the time to talk about

# CAREERS

with **ITT**

Representatives of  
International Telephone and Telegraph Corporation  
will be interviewing Engineers and Physicists

at California State Polytechnic

on February 19

for positions with the following ITT Divisions and  
Associate Companies

FARNSWORTH ELECTRONICS COMPANY  
Fort Wayne, Indiana

FEDERAL TELECOMMUNICATION LABORATORIES  
Nutley, New Jersey and San Fernando, California

FEDERAL TELEPHONE AND RADIO COMPANY  
Clifton, New Jersey

INDUSTRIAL PRODUCTS DIVISION  
San Fernando, California

KELLOGG SWITCHBOARD AND SUPPLY COMPANY  
Chicago, Illinois and Corinth, Mississippi

AMERICAN CABLE & RADIO CORPORATION  
New York, New York

COMPONENTS DIVISION  
Clifton, New Jersey and Palo Alto, California

FEDERAL ELECTRIC CORPORATION  
Lodi and Paramus, New Jersey

INTELEX SYSTEMS INCORPORATED  
New York, New York

ROYAL ELECTRIC CORPORATION  
Pawtucket and Woonsocket, Rhode Island

ITT TELEPHONE AND RADIO OPERATING GROUP  
New York, New York

For details, consult with your Placement Officer  
now, and sign up for a scheduled interview with  
ITT representatives. You may be certain that  
we are looking forward to meeting you.

INTERNATIONAL TELEPHONE AND TELEGRAPH CORPORATION  
67 Broad Street, New York 4, New York