

CAL POLY Report

California Polytechnic State University
San Luis Obispo, CA 93407
Vol. 56, No. 10 • November 14, 2001

Published by Public Affairs • www.calpoly.edu/~communic/CPR/report.htm

DATELINE

(\$) – Admission charged

Exhibits

Kennedy Library: “‘This is woman’s hour ...’ – The Life of Mary Baker Eddy.” Through Nov. 28. Atrium.

Kennedy Library: Student GIS (geographic information systems) projects. Through today (Nov. 14). First floor.

University Art Gallery (Dexter): “Driven,” photo retrospective by Jesse Alexander. Through Dec. 7. Hours: 11 a.m.-4 p.m. daily plus 7-9 p.m. Wednesday.

Wednesday, November 14

GIS Day: Lectures, exhibits and demonstrations, Library, 8 a.m.-5 p.m.

Flu Shot Clinic: For employees and family members. UU 220, 11 a.m.-1 p.m. (\$)

Music: Dorothy Segovia, BackStage Pizza, 11 a.m.

International Politics & Terrorism Seminar: Phil Fetzer (Political Science) moderator. Panelists Craig Arceneaux (Political Science), Carl Lutrin (Political Science) and Maliha Zulfacar (Social Sciences). Christopher Cohan Center, Harman Hall, 7 p.m.

Thursday, November 15

Physics Colloquium: Rod Schoonover (Chemistry), “Protein Electrostatics,” Science E-45, 11 a.m.

What Else We Do: Steven Marx (English), Multimedia presentation about his interactive Web site, “Triangulating Shakespeare,” Science North 202, 11:10 a.m.

Music: Da.m.on Castillo, BackStage Pizza, noon.

Play: “The Miser,” Theatre, 8 p.m. Nov. 15-17. (\$)

Friday, November 16

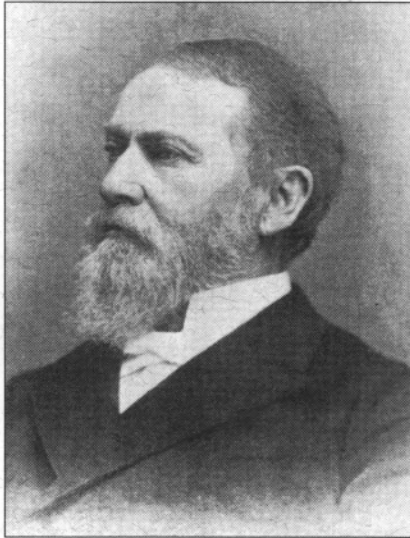
Faculty Workshop: On library resources and services, Library 111-H, 2 p.m.

Music: Travis Larson Band, BackStage Pizza, 6 p.m.

Volleyball: Cal State Northridge, Mott Gym, 7 p.m. (\$)

Continued on page 4

Cal Poly founding Angel



Myron Angel, 1901

During Cal Poly’s Centennial it is only fitting to pay tribute to Myron Angel, a San Luis Obispo newspaperman whose efforts to establish a polytechnic institute led to the founding of California Polytechnic School, a vocational school that would ‘teach the hand as well as the head.’ (Photo courtesy of University Archives, California Polytechnic State University.)

NSF awards Cal Poly nearly \$400,000 scholarship grant

The departments of Computer Science, Industrial and Manufacturing Engineering, Mathematics and Mechanical Engineering, along with Student Academic Services, received an almost \$400,000 grant from the National Science Foundation.

The \$399,367 grant will provide 29 scholarships of \$3,125 each to students in those departments during the next four years.

To be eligible for an “NSF Centennial Scholarship,” a student must demonstrate financial need and strong academic potential. New undergraduate students and new or continuing graduate students may apply.

Undergraduate scholarship recipients will receive advising coordinated by

Continued on page 4

Cal Poly still attracting California’s top students

Cal Poly remains one of the top choices for California’s top students, according to fall 2001 data from the university’s Admitted Student Questionnaire.

The report was prepared for the College Board by Applied Educational Research Inc., an independent national organization.

The report looked at students accepted to Cal Poly as well as other universities in California and across the nation. It also tabulated which universities prospective students applied to in addition to Cal Poly.

The College Board report shows that undergraduates accepted to Cal Poly in 2001 were likely to attend the university, even when also accepted to UC campuses or a number of private universities. Undergraduates accepted at Cal Poly as well as other CSU campuses were also likely to choose Cal Poly.

The university’s top five competitors in terms of attracting students in 2001 were UC Davis, UC San Diego, UCSB, UCLA and UC Berkeley. Those five universities drew the largest number of applications from students who also applied to Cal Poly.

“The report gives us a good idea how we rate in terms of our competition,” said Executive Director of Admissions and Recruitment James Maraviglia. “It highlights our strengths and areas with room for improvement. But it shows we are clearly California’s university of choice.”

Only UCLA and UC Berkeley were slightly more likely to be the universities of choice for students also accepted to Cal Poly for 2001.

For fall, Cal Poly received applications from 18,886 first-time freshmen and 4,339 undergraduate transfer students. Of those, 10,673 were selected for admission. Of the newly accepted first-time freshmen, 3,450 enrolled. When combined with the new transfer students, a total of almost 4,600 newly accepted students chose Cal Poly this year. The average GPA for new first-time freshmen is 3.64 – the highest in the university’s history, said Maraviglia. □

Library resources, services to be focus of workshops

The Kennedy Library is sponsoring two November workshops designed to familiarize faculty members with library services and resources – electronic and otherwise – that facilitate teaching and research.

The workshops are 2-4 p.m. Friday (Nov. 16) and 11 a.m.-1 p.m. Nov. 29 in the library's Reference Department, Room 111-H.

Faculty members can put materials on reserve, search indexes and databases, order new materials, request interlibrary loan and document delivery, keep current with the latest journal literature, and develop a personalized Web research page, all from their desktop.

The library offers instructional sessions for courses and provides simple-to-use interfaces that allow faculty members to set up an electronic syllabus and electronic coursepack. Subject specialists on staff at the library will work with faculty members to design assignments that integrate information competence into their coursework.

The first hour will consist of a general overview of the various services. The second hour can be tailored to individual interests with time for hands-on learning. Participants need not attend both hours of the workshop.

Newer faculty members as well as seasoned teachers unfamiliar with recent additions to the library's resources and services are particularly encouraged to attend.

Pre-registration is recommended (but not required). To pre-register go to www.lib.calpoly.edu/facultyworkshop.

For more information, contact Paul Adalian at ext. 6-5767 or padalian@calpoly.edu. □

Ticket information

Tickets to the performances listed in today's *Cal Poly Report* are on sale at the Performing Arts Ticket Office 10 a.m.-6 p.m. weekdays and 10 a.m.-4 p.m. Saturdays. Call ext. 6-2787, or fax your order to ext. 6-6088. Tickets can also be bought online via Tickets.com. Visit the Performing Arts Center's Web site at pacsla.org and click on "Event Calendar." □

Marx to demonstrate award-winning Web site

English Professor Steven Marx will give a multimedia presentation about his award-winning interactive Web site, "Triangulating Shakespeare," 11:10 a.m.-noon on Thursday (Nov. 15) in Science North 202.

Called "an outstanding instructional Web site" in "A Selected Guide to Shakespeare on the Internet," Marx's site centers on teaching methods and student responses, with an emphasis on student performances. It was awarded a "five diamond" rating by the guide "Mr. William Shakespeare and the Internet – Best Sites," which calls it "a fine model for performance/Web/coursework integration."

Marx is the author of "Shakespeare and the Bible," "Youth Against Age: Generational Strife in Renaissance Poetry" and numerous critical essays.

A specialist in Shakespeare and Renaissance literature, the Bible, and environmental literature, Marx joined the Cal Poly faculty in 1988. He received the university's Distinguished Teaching Award in 1994.

Marx's presentation is part of the English Department's What Else We Do series, which aims to expose a broad audience to the creative endeavors and professional activity of the English Department faculty. Short, informal presentations are followed by discussion.

For more information, contact the English Department at ext. 6-2597 or series organizer Debora Schwartz, 6-2636. □

Musical comedy troupe to play Sunday at Cal Poly

The Bobs, an a cappella comedy quartet, will perform at 7 p.m. Sunday (Nov. 18) in the Christopher Cohan Center's Harman Hall.

Part theater, part comedy and part performance art, the Bobs are known as "The Band Without Instruments." The quartet uses voice, body percussion and sound effects to cover familiar pop tunes and to devise comically original songs.

"The Bobs ... sing like Gary Larson draws," according to the *Seattle Times*.

The group has been nominated for a Grammy, appeared on network television, and been the musical commentators on National Public Radio.

Tickets cost \$16 to \$28, with student discounts available. □

Information Technology sets 'Brown-Bag Seminars'

Information Technology Services has begun a Brown-Bag Seminar series designed to provide an informal, open forum for developing awareness of information technologies, their application in support of teaching and learning, and issues related to their use.

The seminars are held 12:10-1 p.m. Fridays during fall, winter and spring quarters in the Center for Teaching and Learning at the Kennedy Library, Room 510. Attendees are encouraged to bring a lunch and participate in the discussion.

Remaining fall quarter seminars will be:

- Dec. 7: Steve Rutland (ITS), Susan Stewart (Student Academic Services) and Luanne Fose (ITS Integrated Media Services) will present "Making Your Web Pages Accessible and ADA-Compliant."

- Dec. 14: James Feld (ITS Network Administration), "Internet 2: Advanced Applications for Research and Development."

- Dec. 21: Lynn Hays (ITS Application Services and Support), "Strategies for Managing Your E-mail and Other Files."

Winter Quarter Schedule

- Jan. 11: Chris Stavros (ITS Applications Management), "Cal Poly Portal: Plans, Processes and Adding Channels."

- Jan. 18: Feld, "Internet 2: Collaborate and Access Information in Ways Not Possible Using Today's Internet."

- Jan. 25: Craig Schultz (ITS User Support Services), "Windows 2000: Navigation, Security and Profiles."

- Feb. 8: Garrett Conaty (ITS Integrated Media Services), "Linux: What Is It and Why Consider It?"

- Feb. 22: Schultz, "Preparing Your PC for Disaster: Data Recovery Strategy/Avoiding Problems."

- March 8: Susan Opava (Research and Graduate Programs), "Intellectual Property Policy and Online Courses."

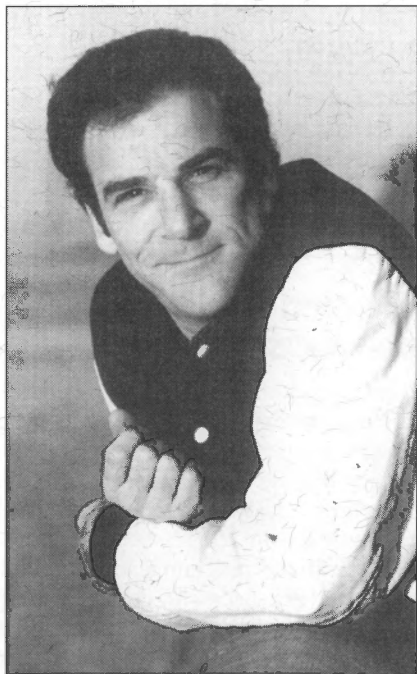
Spring Quarter Schedule

- April 5: Fose, Tonia Malone (ITS Integrated Media Services) and Judy Swanson (Library Information and Instructional Services), "Adding Movies, Music and Narration to PowerPoint and Web Pages."

- April 19: Pete Woodworth (ITS Media Distribution Services), "Desktop Videoconferencing."

Continued on page 4

Music Man(dy)



Mandy Patinkin

In his Dec. 27 concert in the Christopher Cohan Center's Harman Hall, Mandy Patinkin will perform songs by Rodgers and Hart, Stephen Sondheim, Harry Chapin, Irving Berlin and Cole Porter.

Lloyd Lamouria, 78

Lloyd Lamouria, retired head of the Agricultural Engineering Department, died Oct. 23.

Lamouria worked at Cal Poly from 1965 to 1987. He had a long and distinguished career as an educator and inventor. □

Long-distance rates to go down Saturday

Beginning Saturday (Nov. 17) the cost to place long-distance calls from campus phones, including those in residence halls, will be reduced.

The recently completed CSU-wide long-distance service contract enables Cal Poly to reduce intrastate rates to 9 cents a minute and interstate rates to 11 cents a minute. The rates will be reflected in the December 2001 departmental and residence hall student phone bills.

For more information, call Telecommunications Services at ext. 6-2671, e-mail telecomservices@calpoly.edu or visit www.telecomservices.calpoly.edu.

Poet Linda Bierds to read

Acclaimed poet Linda Bierds will kick off WriterSpeak's fall showcase of writers at 7 p.m. Friday (Nov. 16) in Philips Hall in the Christopher Cohan Center.

Bierds is the author of six volumes of poetry, including the recently released "The Seconds" and "The Profile Makers," for which she won the PEN West Poetry Prize and was awarded a John D. and Catherine T. MacArthur Foundation Fellowship.

Her work has appeared in such journals and magazines as *The Atlantic Monthly*, *Field*, *The New Yorker* and *Parnassus*.

She has been widely praised by fellow poets, including Stanley Plumly, who said, "With each new book, Linda Bierds has moved more inward, toward the clarifying dark and its complexities Her sense of her subject is like her sense of time: projection, identification, and a complete taking-on of the moment."

Among her many awards are two National Endowment for the Arts grants, as well as fellowships from the Ingram Merrill, John Simon Guggenheim and Wolfers-O'Neill foundations.

Bierds directs Washington University's Creative Writing Program.

The reading is sponsored by the College of Liberal Arts, Cal Poly Arts and a grant from Poets and Writers.

Admission is \$2 for students and \$3 for the public at the door.

For more information contact Adam Hill of the English Department faculty at ext. 6-1622 or ahill@calpoly.edu. □

Teachers sought for Spain Study Program

The International Education and Programs office is accepting applications for teaching in the Salamanca, Spain, Study Program for fall 2002. Faculty members from all colleges are encouraged to apply.

The primary emphasis in selecting teachers is to choose faculty members who offer courses needed by participating students. Final selection will be determined chiefly by student course selection because, while faculty development is an important element of the Salamanca program, the program is driven by the curricular needs of the students. A selection committee will screen the candidates.

The International Education and Programs office administers the Salamanca program in conjunction with a professional study-abroad service-provider.

Salamanca is considered to be one of Spain's most graceful Castilian cities. The European Union has designated it the "European Capital of Culture for 2002," an honor that reflects that city's historical significance and cultural vibrancy.

The study program provides an opportunity for an international educational experience in a single quarter and immerses students in Spanish culture and life.

The primary curricular emphasis is general education in the humanities, arts and social sciences. The program encourages and supports participation from faculty members in the professional areas.

Applications are available in the International Education and Programs office, Mathematics and Science 107.

Applications, in duplicate with departmental chair/head and college dean approvals, are due Dec. 7.

For information, call IEP Associate Director Barbara Andre at ext. 6-5837 or e-mail bandre@calpoly.edu. □

Leland Faulkner adds evening performance

Cal Poly Arts has added an evening show by performance artist Leland Faulkner at 6:30 p.m. Jan. 13 in the Christopher Cohan Center Pavilion.

A limited number of seats are still available for the 3 p.m. Jan. 13 Family Arts show.

Faulkner is known for presenting audiences of all ages with a theatrical feast of classic conjuring, fantastic tales, light-hearted humor, pantomime and stunning shadow play.

Tickets for both performances are \$15, with student discounts available. □

CPR deadline change

Please note that the *Cal Poly Report* is changing the deadline for the Nov. 28 issue because the campus will be closed for the Thanksgiving holiday, Thursday and Friday, Nov. 22-23. Items are due to Public Affairs by 10 a.m. Monday, Nov. 19. Please also note that the Dec. 12 issue is the final one for fall quarter. Items can be e-mailed to polynews@polymail, faxed to ext. 6-6533, or mailed to Public Affairs, Heron Hall.

For more information, call Public Affairs at ext. 6-1511. □

NSF awards . . .

Continued from page 1

Student Academic Services for the duration of the award, typically two years.

The co-principal investigators were Sema Alptekin, chair of the Industrial and Manufacturing Engineering Department; Mei-Ling Liu, Computer Science; Saeed Niku, Mechanical Engineering; Linda Patton, Mathematics; and Susan Sparling, Student Academic Services.

For more information, contact Patton at lpatt@calpoly.edu or ext. 6-1680. Information is also available on the scholarship Web site at www.lib.calpoly.edu/NSFscholars. □

Information Technology . . .

Continued from page 2

- May 3: Conaty, "Setting up a Home Firewall."

- May 17: Dan Mull (ITS Media Distribution Services), "Technology in the Classroom: Tips and Techniques."

- June 7: Walt Bremer (Landscape Architecture), Don Maas (University Center for Teacher Education) and Fose, "Leveraging the Web: How to Redesign Your Course to Enhance Access, Quality and Communication."

For more information, call Fose at ext. 6-7360 or e-mail lfose@calpoly.edu or visit the Brown Bag Seminars Web site at www.multimedia.calpoly.edu/brownbag/index.html. □

Employees win prizes in cat program raffle

Several employees won prizes in the recent raffle held to support the Cal Poly cat program.

Leigh Elfrink (Facility Services), Pat Davidman (University Center for Teacher Education), Jake Feldman (Architectural Engineering), Mark Welch (Facility Services), Sabra Scott (Facilities Planning), Jane Brechler (Philosophy), George Mead (Facility Services), Bob Kitamura (Facilities Planning), Don Popham (Facility Services), Pam Hutchins (Campus Catering) and Kathy Lamoree (Facilities Planning) won such prizes as gift certificates to El Corral, the Paso Robles Hot Springs and Spa, The Cliffs Resort, and Sycamore Hot Springs. □

Foundation board to meet

The Foundation Board of Directors will hold a regular public meeting at 8:30 a.m. Dec. 7 in the Foundation Administration Building, Conference Room 124.

For more information about the meeting or to obtain a copy of the agenda, contact Foundation Executive Director Frank Mumford at ext. 6-1131.

A copy of the agenda packet is available for review at the Kennedy Library Reserve Desk (Room 114) and at the Academic Senate Office, Room 143 in the Mathematics and Science Building. □

Position Vacancies

STATE: The official listing of staff and management vacancies is posted at least two weeks prior to closing dates on Cal Poly's Web site at www.calpoly.edu. (Select "Employment" from the Cal Poly links drop-down box.) Job applications must be received in Human Resources, Adm. 110, by 5 p.m. on the closing date.

FACULTY: Candidates are asked to contact the appropriate department office at the phone number listed for more information or to request an application. Additional information and qualifications for each position may also be obtained online at <http://www.academic-personnel.calpoly.edu>. Please submit all application materials to the department head/chair unless otherwise specified in the ad. Rank and salary are commensurate with qualifications and experience (and time base where applicable), unless otherwise stated.

#3094: Tenure-Track Assistant Professor, BioResource and Agricultural Engineering Department (ext. 6-2378). Closing date: Feb. 1.

#3948: Tenure-Track Assistant Professor, Industrial and Manufacturing Engineering Department (ext. 6-2342). Closing date: Dec. 30.

#3978: SSP-AR I/II, Tenure-Track, Campus Relations office (ext. 6-6770). Closing date: Dec. 5.

FOUNDATION (Foundation Adm. Building, job line at ext. 6-7107). All Foundation applications must be received (not just postmarked) by 5 p.m. of the closing date. (No faxes.)

Accounts Payable Clerk II, Foundation Business Office: \$12.47-\$18.12/hour. Closing date: Open until filled; review of applications begins Nov. 26. □

Flu shot clinic today

The Employee Assistance Program is sponsoring a flu shot clinic for employees and family members 11 a.m.-1 p.m. today (Nov. 14) in UU 220.

Pre-registration is not required. The \$15 fee can be paid by cash or check made payable to Maxim Health Systems.

For more information, call Anne Goshen at ext. 6-0327. □

Extended studies to host open house tonight

Extended Studies is hosting an open house this evening (Nov. 14) for people who want to learn about the Grant Development and Management Certificate Program.

The open house is 6:30-8 p.m. in Erhart Agriculture Room 220.

The certificate program teaches individuals how to write successful grant and fundraising proposals and includes information on identifying funding sources and communicating ideas to those sources, completing budget proposals, and writing and managing grants.

For more information and to register, call Extended Studies at ext. 6-2053. □

Dateline . . .

Continued from page 1

WriterSpeak: Poet Linda Biersds, PAC Philips Hall, 7 p.m. (\$)

Play: "The Miser," Theatre, 8 p.m. Nov. 15-17. (\$)

Saturday, November 17

Volleyball: Pacific, Mott Gym, 7 p.m. (\$)

Play: "The Miser," Theatre, 8 p.m. Nov. 15-17. (\$)

Sunday, November 18

Music: The Bobs, Christopher Cohan Center's Harman Hall, 7 p.m. (\$)

Tuesday, November 20

Women's Basketball: UC Berkeley, Mott Gym, 7 p.m. (\$)

Wednesday, November 21

Academic Holiday: Thanksgiving holiday for academic-year employees. Through Nov. 25.

Thursday, November 22

Holiday: Thanksgiving holiday for year-round employees. Through Nov. 25.

Tuesday, November 27

Music: Richard Green, BackStage Pizza, 11 a.m. □