

# CAL POLY Report

California Polytechnic State University  
San Luis Obispo, CA 93407  
Vol. 56, No. 8 • October 31, 2001

Published by Public Affairs • [www.calpoly.edu/~communic/CPR/report.htm](http://www.calpoly.edu/~communic/CPR/report.htm)

## DATELINE

(\$) – Admission charged

### Exhibits

**Kennedy Library:** “This is woman’s hour ...” – The Life of Mary Baker Eddy.” Through Nov. 28. Reception: 4-6 p.m. Friday (Nov. 2), Atrium.

**Kennedy Library:** Student GIS (geographic information systems) projects. Nov. 1-14, first floor.

**University Art Gallery (Dexter):** “Driven,” a photo retrospective by Jesse Alexander. Nov. 5-Dec. 7. Book signing: Nov. 8, 5-6 p.m. Reception follows. Cal Poly Arts reception before the musical “Ragtime”: Dec. 3, 5-7 p.m. Hours: 11 a.m.-4 p.m. daily plus 7-9 p.m. Wednesday.

### Thursday, November 1

**Physics Colloquium:** Fred Depiero (Electrical Engineering), “Range Image Registration,” Science E-45, 11 a.m.

**One-Woman Play:** Susan McCully, “Cyber Becomes Electra: An Errata(ca),” Davidson Music Center 218, 6 p.m.

### Friday, November 2

**Panel:** Sandra Duerr (The Tribune), Mark Sappenfield (The Christian Science Monitor) and Sonia Slutzki (Mustang Daily) will discuss journalism and terrorism. Kennedy Library, 4 p.m.

**Women’s Soccer:** Cal State Fullerton, Mustang Stadium, 6 p.m. (\$)

**Men’s Soccer:** UC Riverside, Mustang Stadium, 8 p.m. (\$)

### Saturday, November 3

**Performance Art-Comedy:** Paul Zaloom’s “Velvetville,” Christopher Cohan Center’s Pavilion, 8 p.m. (\$)

### Sunday, November 4

**Women’s Soccer:** UC Riverside, Mustang Stadium, 1 p.m. (\$)

**Family Entertainment:** “Beakman Live!,” Christopher Cohan Center’s Harman Hall, 3 p.m. (\$)

**Men’s Soccer:** Cal State Northridge, Mustang Stadium, 5 p.m. (\$)

### Tuesday, November 6

**Books at High Noon:** Don Lazere

*Continued on page 6*

## Stairway to the past



*This photo, taken by Architecture Professor Sandra Davis Lakeman on the island of Sardinia, is titled “Nuraghe Santu Antine Stairway, Torralba.” It is one of many taken for a book she is writing on the art and architecture of the prehistoric and Nuragic civilizations. Lakeman says, “This mammoth helicoidal staircase rises from the Nuraghe’s ground-level courtyard in a clockwise course within the wall girth around the major central tower. Built of Cyclopean basalt stone, it is a majestic example of the more than 7,000 truncated conical Nuraghe towers that appear in every part of Sardinia. The mystery of the island’s enigmatic inhabitants is palpable – their presence seems to exist within this stairway image. It captures their ‘spirit’ as light enters from a small opening and from beyond an upper open rampart that connects two towers – a unique feature of this powerful Nuraghe.” (See page 2 for story and more photos.)*

## State, United Way drives aid neighbors in need

Cal Poly’s 2001 United California State Employees Campaign and the United Way campaign for ASI and Foundation employees are beginning and will run through Nov. 16.

The annual campaigns enable Cal Poly employees to give through payroll deduction, cash or check to any tax-exempt non-profit organization, wherever it might be.

United Way of San Luis Obispo County manages the State Campaign in the county, and donations not specified for another organization go to the local United Way. Of every dollar donated to the local United Way, almost 99 cents remains in the county. The funds are distributed among more than 50 programs that aid county residents in need.

Once again this year, the San Luis Obispo County United Way is focusing

*Continued on page 6*

## ‘Centennial Homecoming’ planned for Nov. 9-11

The campus community is invited to take part in this year’s Homecoming festivities, Nov. 9-11.

“A Centennial Homecoming,” this year’s Homecoming theme, honors Cal Poly’s first 100 years and looks forward to its next 100.

The first major public event is the Homecoming parade at 10 a.m. Nov. 10 in downtown San Luis Obispo. The fun continues on campus at the “SLO-style” Homecoming tailgate party, complete with a tri-tip barbecue. The barbecue runs noon-3 p.m. on the Orfalea College of Business lawn.

After the barbecue, the Mustangs play CSU Northridge in Mustang Stadium. Kick-off is at 3 p.m.

At 10:30 a.m. Nov. 11, a special Veterans’ Day ceremony honoring Cal Poly alumni who lost their lives in military service in World War II and post-WWII

*Continued on page 4*



## Cal Poly selects eight Honored Alumni for 2001

Cal Poly has selected eight alumni – all leaders in their fields with close ties to the university – to be honored during Homecoming festivities Nov. 9-11. The six colleges and the University Center for Teacher Education have named their Honored Alumni for 2001, and the Alumni Association has chosen its Honored Alumni Distinguished Service Award recipient.

• **College of Agriculture:** George Foster earned a Bachelor of Science degree in poultry science in 1969. He is the son of Max and Verda Foster, founders of Foster Farms, the largest poultry company in the western United States with 10,000 employees. Foster is a strong supporter of College of Agriculture programs and has contributed to the college's student scholarships, studio computer classrooms, poultry faculty positions and poultry science complex operations. He has served as a member of the Animal Science Department Advisory Council since 2000 and is currently a member of the College of Agriculture Dean's Advisory Council. His wife, Sue, is also a graduate of Cal Poly.

• **College of Architecture and Environmental Design:** Emanuele Barelli earned a bachelor's degree in architecture in 1970. As a principal with B & B Associates Inc., he is responsible for technical supervision and production of all projects. He has worked on large-scale structural systems such as high-rise buildings, oil platforms and nuclear-containment vessels. He has been responsible for a wide variety of institutional, commercial, industrial and residential projects with varying degrees of complexity, from small retail shops to multistory hotels and office buildings. Barelli is president of the College of Architecture and Environmental Design Foundation and serves as a member of the college's Dean's Advisory Council and Cal Poly's Alumni National Board of Directors.

• **Orfalea College of Business:** Michael Deisenroth earned a bachelor's degree in business administration in 1976. He began his career with Anixter as a communication cabling specialist. In 1995 he started his own company, ComLink Marketing, focusing on data networking products. Although now semi-retired, he remains active as a technical consultant. He is working with SBC Communications, the parent company of PacBell, as a business analyst on new product methods and procedures. His wife, Sue, earned a bachelor's degree in biology from Cal

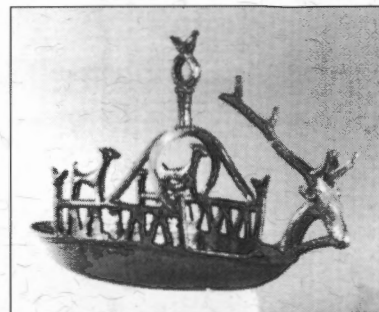
Poly in 1976. Both Mike and Sue are strong supporters of Cal Poly. Mike serves on the Orfalea College of Business Campaign Committee.

• **College of Engineering:** Paul Bonderson Jr. is a 1975 electrical engineering graduate. He is vice president of engineering and the co-founder of Brocade Communications Systems Inc., a leading supplier of open fiber channel fabric systems that provide the "intelligent backbone" for storage-area networks. He is credited with putting together the core team that formed the company, and he was instrumental in developing the product strategy, business strategy and business plan. He has more than 20 years of industry experience at Sun Microsystems, Data System Design and Intel. He serves on the College of Engineering Dean's Advisory Council and the college's Centennial Campaign Committee. His recent commitment of \$6 million to Cal Poly is enabling the college to build a new engineering student projects center.

• **College of Liberal Arts:** Margie "Peggy" Peterson earned a bachelor's degree in social sciences in 1959, a master's degree in education, a general secondary credential, and a credential in pupil personnel services. In 1988 she received the first Cal Poly President's Arts Award, recognizing her many contributions to the community and the university. She and her husband, Gerry, a retired Cal Poly electronics teacher, have served the arts community with volunteer work and financial contributions. They have been involved with the San Luis Obispo Symphony, the Symphony Guild, Cal Poly Arts, the Vocal Arts Ensemble and the Cuesta Master Chorale. She currently serves as a member of the College of Liberal Arts Advisory Board.

• **College of Science and Mathematics:** L. Byron Culver earned a bachelor's degree in physical education with a general secondary teaching credential in 1950. He began his career in education at Imperial High School and went on to become that school's director of athletics and varsity football coach. In 1957, he became president of Culver Farms Inc., a diversified farming and cattle operation that he later sold to Fresh Pick, a subsidiary of Purex Corp. In 1958 he formed Culver Enterprises Inc., a company that owned and managed commercial real estate properties until 1978. In 1971 he founded

*Continued on page 6*



*"Small Votive Offertory Bronze Boat with Deer and Bird Motif"*



*"Terracotta Mask"*

## Lakeman photo essay to be in Archaeology

A photo essay on Italy's island of Sardinia by Architecture Professor Sandra Davis Lakeman will be published in the November-December issue of Archaeology magazine.

The essay is titled "Legacy in Stone: Sardinia's Ubiquitous Towers Recall a Time of Fortified Farmsteads."

Lakeman took the photos for a book she is writing with Sardinian professor Giovanni Lilliu, known as the father of modern archaeology on the island. The book is titled "Sardinia, the Spirit of an Ancient Island: The Art and Architecture of the Pre-historic and Nuragic Civilizations." The Nuragic period was 1800-238 B.C, ending when the Romans conquered the island.

"It occurred to me that if I captured the images with the same lighting conditions that appeared during that far distant time, I could manifest similar situations and set the same ambiance as felt and enjoyed by the early Nuragici," Lakeman said. □



## Rental unit available for faculty, staff member

The Cal Poly Housing Corp., which is working to acquire single-family residences to supplement the university's Faculty-Staff Housing Program, has a property available to rent.

The single-family residence is one of two properties managed by the corporation. It has two bedrooms, one bath and a two-car garage and includes stove and refrigerator. Lawn care, water, and trash service are included. Other utilities are the responsibility of the renter. The home rents for \$1,400 a month and is available now.

The Housing Corp. plans to purchase homes that have been donated to the university if they are deemed appropriate for rental units.

"A critical component in the development of the Faculty-Staff Housing Program is the determination of eligibility criteria," said Bob Ambach, associate executive director of the Foundation. "The Housing Corp. is in the process of establishing such criteria in concert with university personnel. Until a formal eligibility policy has been adopted, any current, full-time employee of the university, ASI or Foundation may apply."

For more information, e-mail Ambach at [rambach@calpoly.edu](mailto:rambach@calpoly.edu). □

## Mark O'Connor to perform Tuesday at Cal Poly

Violinist-composer Mark O'Connor, hailed as one of the most gifted talents of his generation, will perform with the Metamorphosen Chamber Orchestra at 8 p.m. Tuesday (Nov. 6) in the Christopher Cohan Center's Harman Hall.

The program will feature Dan Coleman's "Long Ago, This Radiant Day," John Adams' "Shaker Loops for Seven Strings," and O'Connor's "Strings and Threads" and "The American Seasons."

The New York Times said O'Connor's work is "one of the most spectacular journeys in recent American music."

Boston's 19-member Metamorphosen Chamber Orchestra has recorded eight albums, including 14 premiere works.

Cal Poly music professor Alyson McLamore will present a pre-concert lecture at 7 p.m. in Philips Hall.

Tickets to this Cal Poly Arts concert are \$32 to \$44, with student discounts available. □

## Open forums planned for V.P. finalists

Two candidates for the position of vice president for administration and finance will be interviewed on campus in the next several days. Students and faculty and staff members are encouraged to attend the open forums and meet the candidates.

• Gregory R. Fox, vice chancellor for finance and operations, University of Minnesota-Duluth, is on campus today and Thursday (Oct. 31-Nov. 1). An open forum is scheduled 1-2 p.m. Thursday in the Veranda Cafe.

• Kevin Appleton, vice president for finance and administration, Jackson State University, Jackson, Miss., will be interviewed Monday and Tuesday (Nov. 5-6). An open forum will be held 1-2 p.m. Tuesday in UU 220. □

## Motor sport to be focus of photography exhibit

A retrospective exhibit of work by internationally renowned motor sport photographer Jesse Alexander will be featured in the next University Art Gallery show, Nov. 5-Dec. 7.

Alexander's images appear in numerous corporate collections and museums. His latest book, "Driven," is a collection of his signature photographs illustrating the European racing scene from 1953 to 1963.

Considered by some to be "the Ansel Adams of motor sports," Alexander began his career in 1953, when he traveled to Mexico to photograph La Carrera Panamericana, the legendary car race held in Mexico throughout the early '50s. In 1954, on a trip to Europe, he photographed the Formula One races.

His work has been seen in Car and Driver, Road and Track, and Automobile magazine. In 1965 he covered Le Mans' 24-hour race for Newsweek, and in 1967 Sports Illustrated published his photos with a feature on Giacomo Agostini, the world champion motorcyclist.

Alexander will hold a book signing 5-6 p.m. Nov. 8. An artist's reception will follow in the University Art Gallery in the Dexter Building.

For more information on Alexander and to see some of his work, visit his Web site at [jessealexander.com](http://jessealexander.com).

The University Art Gallery is open 11-4 p.m. every day and 5-7 p.m. Wednesdays. For more information, call the gallery at ext. 6-1571. □

## Friday panel to discuss journalism, terrorism

A panel discussion on journalism and terrorism will be held at 4 p.m. Friday (Nov. 2) in the first-floor rear lobby of the Kennedy Library.

Discussion will focus on aspects of terrorism and media reporting since the Sept. 11 attacks in New York and Washington, D.C.

Panelists include Sandra Duerr, vice president and executive editor at The Tribune, and Sonia Slutzki, managing editor of the Mustang Daily.

Also on the panel will be Mark Sappenfield, a correspondent with The Christian Science Monitor, who is appearing at Cal Poly in conjunction with the touring exhibit "This is woman's hour ... - The Life of Mary Baker Eddy," on display in the library.

Hiram Davis, dean of library services, will open the program. Marceil DeLacy, international speaker on the life of Eddy, will give brief remarks and serve as moderator. She will discuss Eddy's purpose in founding The Christian Science Monitor in 1908 when she was 87. The Christian Science Monitor has been published continuously for 93 years and has won numerous awards, including six Pulitzer prizes.

The exhibit on Eddy's life was first displayed as an "untold story" in the Women's Rights National Historical Park Visitors Center in Seneca Falls, N.Y. Since then, it has toured major metropolitan and university libraries, statehouses and museums throughout the United States. The exhibit's stop at Cal Poly is part of a yearlong tour of Southern and Central California.

Complimentary copies of The Christian Science Monitor will be available at the reception.

The exhibit will be open during regular library hours. For more information, contact Lynda Alamo in the Kennedy Library at ext. 6-5785 or [lalamo@calpoly.edu](mailto:lalamo@calpoly.edu). □

## Ticket information

Tickets to the performances listed in today's *Cal Poly Report* are on sale at the Performing Arts Ticket Office 10 a.m.-6 p.m. weekdays and 10 a.m.-4 p.m. Saturdays. Call ext. 6-2787, or fax your order to ext. 6-6088. □



## Molière's 'The Miser' to open theatre season

The Theatre and Dance Department will open its 2001-2002 season Nov. 8 with Molière's classic comedy "The Miser."

The story centers around Harpagon, a miser who tries to hold onto his money while his family desperately tries to spend it.

Al Schnupp, Theatre and Dance Department chair and director of the production, calls "The Miser" "one of theater's most enduring comic creations."

Performances are at 8 p.m. Thursday-Saturday, Nov. 8-10 and Nov. 15-17. Tickets cost \$7-\$8.

For more information call the Theatre and Dance Department at ext. 6-1465 or visit its Web site at [cla.calpoly.edu/thtrdanc](http://cla.calpoly.edu/thtrdanc).



Jennie Pierson as Frosine and Albert Nunez as Harpagon in the Theatre and Dance Department's production of Molière's "The Miser."

## Reception planned to honor Teacher of the Year

The agricultural education student organization Alpha Tau Alpha, the Agricultural Education and Communication Department, and the University Center for Teacher Education invite the campus community to a reception and barbecue Tuesday (Nov. 6) honoring San Luis Obispo County "Teacher of the Year" Bob Cummings of Shandon High School.

The reception will begin at 5:30 p.m. in Room 203 of the Dairy Science Instructional Center. The barbecue begins at 6 p.m.

Those who plan to attend are asked to e-mail Bill Kellogg at [bkelllogg@calpoly.edu](mailto:bkelllogg@calpoly.edu) by Friday (Nov. 2). □

## CPR schedule change

Please note that the *Cal Poly Report* is changing the deadline for two upcoming issues because the campus will be closed for Veterans' Day, Monday, Nov. 12, and for the Thanksgiving holiday, Thursday and Friday, Nov. 22-23.

Items are due to Public Affairs by 10 a.m. Tuesday (Nov. 6) for the Nov. 14 issue and by 10 a.m. Monday, Nov. 19, for the Nov. 28 issue. Items can be e-mailed to [polynews@polymail](mailto:polynews@polymail), faxed to ext. 6-6533, or mailed to Public Affairs, Heron Hall. For more information, call ext. 6-1511. □

## One-woman show to look at reproductive technology

University of Maryland professor and resident playwright Susan McCully will present "Cyber Becomes Electra: An Errata(ca)," a one-woman performance, at 6 p.m. Thursday (Nov. 1) in Room 218 in the Davidson Music Center.

The Women's Studies Program is presenting the event, described by the author as a "dizzying verbal ride through eight characters and their modern madness."

Moving through topics ranging from reproductive technologies to "cyborgs," McCully explores the trials and tribulations of Electra, a woman who subjects herself to increasingly technocratic forms of reproduction so that she might "be a mother."

McCully's fast-paced performance explores the seemingly limitless domination of female bodies through reproductive technology.

For more information, contact the Women's Studies Program at ext. 6-1525, stop by Room 25-H in Faculty Offices North, e-mail [womst@polymail.calpoly.edu](mailto:womst@polymail.calpoly.edu) or visit the Web page at [www.calpoly.edu/~womst](http://www.calpoly.edu/~womst). □

## 'Weird science' comes to Cal Poly Sunday afternoon

Emmy Award-winning madcap "scientist" Paul Zaloom will perform "Beakman Live!" at 3 p.m. Sunday (Nov. 4) in the Christopher Cohan Center's Harman Hall.

Zaloom, the host since 1992 of "Beakman's World," an educational science show for children on CBS, is appearing as part of Cal Poly Arts' Family Series.

As Beakman, Zaloom plays a humorous, inquisitive scientist who answers viewers' questions about science and nature. Currently in syndication across the country, the show was nominated for numerous Emmys, including Best Children's Show.

"Beakman Live!" features large-scale, wacky science demonstrations with audience participation. As Beakman says, "We're not putting the fun in science, we're just letting the fun that's in science out."

Zaloom has received four National Endowment for the Arts fellowships, three Henson Foundation grants, and a Guggenheim Fellowship to fund additional development of his work.

Tickets are \$15, with student discounts available. □

## Homecoming . . .

*Continued from page 1*

conflicts will take place at the UU Mustang statue.

Two events were added this year on Nov. 11 to honor Cal Poly faculty members. The College of Architecture and Environmental Design will host a gathering in celebration of the life of founding Dean George Hasslein. The event runs 11 a.m.-1 p.m. in the College of Architecture and Environmental Design Gallery, Room 105.

The Orfalea College of Business is hosting a gathering at Vista Grande 11 a.m.-12:30 p.m. to honor Eugene O'Connor for his 28 years of distinguished service. Reservations are required. For reservations, e-mail [sedar@calpoly.edu](mailto:sedar@calpoly.edu) or call ext. 6-2951.

Check out the full schedule of events for Homecoming 2001 online at the Cal Poly Alumni Association Web site: [www.alumni.calpoly.edu](http://www.alumni.calpoly.edu). □



## Yahoo! rates Cal Poly a top-100 'wired college'

Yahoo! Internet Life Magazine has rated Cal Poly among the top 100 universities for its Internet technology and services.

The campus was rated 71st among more than 1,300 "wired colleges" surveyed in the spring.

The magazine, which appears both on the World Wide Web and in print, gave Cal Poly top marks for technical support and good marks for online resources available to students, Internet-based instruction or "e-learning," and ease of access to information through the Web.

Vice Provost for Information Technology Services Jerry Hanley said being recognized as a university leader in the use of technology is "a real achievement, although we can do better."

"While Cal Poly is nationally recognized for the quality of its academic programs," Hanley said, "this shows we can compete with other universities on the basis of the access to technology we offer to students."

He said he values the survey because it "really emphasizes the student perspective." He said his office will use the survey as one way to measure the service

it provides and as a benchmark for improvement across the campus.

Infrastructure and wireless access were two areas in which Cal Poly scored lower. The university's wireless-access technology, for example, was not online when the survey was taken. A pilot system is now operating in the Kennedy Library to help identify what support, including security, must be in place before wireless technology can be expanded to other areas.

The campus has also introduced a "Web portal" (<http://my.calpoly.edu>) that individual students – and eventually employees – can personalize to gain direct access to the electronic information and services they want and need most often.

In addition, this year Cal Poly will significantly improve its computing network and develop a strategy to upgrade its student computing labs. The state of those labs was a factor contributing to the lower infrastructure rating.

The "Wired Colleges 2001" article, included in Yahoo! Internet Life's October edition, is available on the Web at <http://yil.com/wiredcolleges/>. □

## Cal Poly, Flextronics unveil new lab

A partnership between the Industrial and Manufacturing Engineering Department and Flextronics, an electronics manufacturing services provider with headquarters in Singapore, is helping students learn the intricacies of building electronic products.

The newly dedicated Flextronics Manufacturing Engineering Automation Laboratory exposes engineering students to the processes and technologies by which electronic products are built.

The facility was funded by \$100,000 in contributions and pledged gifts from Flextronics.

"Flextronics was instrumental in helping Cal Poly procure another \$500,000 in state-of-the-art electronics-automated manufacturing equipment from companies such as DEK and Heller Industries," said Mark Cooper, director of corporate relations for the College of Engineering. "Because of our productive partnership with Flextronics, our students will gain an understanding of the specific electrical, mechanical, and manufacturing engineering and project management challenges in re-configuring a state-of-the-art assembly facility to produce a real product."

Cal Poly now has four electronic manufacturing engineering laboratories, including a modern surface-mount assembly facility. □

## Emergency preparedness information now online

The campus Risk Management Office has made available online several sites that provide emergency preparedness information.

Information on how to assemble a family emergency kit can be found on the office's "Family Disaster Supplies Calendar" page. The "Personal Emergency Supplies" publication provides information on assembling vehicle and workplace emergency kits, and a list of supplies recommended for each campus department is included on the "Department Emergency Supplies Kit" site.

To access the information, go to the Risk Management Web page at <http://risk.calpoly.edu> and click on "Emergency Management Planning" on the left.

For more information on emergency preparedness, contact David Ragsdale, environmental health and safety manager, at ext. 6-6662 or [dragsdal@calpoly.edu](mailto:dragsdal@calpoly.edu). □

## Commuters needed for North County van pool

Some seats are available in a North County van pool that serves employees who work 8 a.m.-5 p.m.

The van picks up commuters at two locations in Atascadero: at St. William's Church at 7:20 a.m. and the Santa Rosa Park-'n-Ride lot at approximately 7:27 a.m.

The maximum cost per month is \$30 during the Cuesta Grade construction, which is expected to last another two years.

According to Deby Anderson, coordinator of commuter and access services with the University Police, the average cost to drive alone is \$228 per month, not including a parking permit.

For more information, contact Anderson at ext. 6-6680 or [djanders@calpoly.edu](mailto:djanders@calpoly.edu). □

## Flu shot clinic to be Nov. 14

The Employee Assistance Program is sponsoring a flu shot clinic for employees and family members 11 a.m.-1 p.m. Nov. 14 in UU 220. The cost is \$15 per shot and can be paid by cash or checks. For more information, call Anne Goshen at ext. 6-0327.

## Cal Poly volunteers raise \$14,000 in walk

Cal Poly's "Team SLO But Sure" recently completed the Avon Breast Cancer Three-Day walk and raised more than \$14,000 for breast cancer research and education.

The Cal Poly team, sponsored in part by Women's Programs, included Val Barboza in Financial Aid, Valerie Ferraro in Admissions, Lynne Naga-hara in Academic Records and Evaluations and Elaine Ramos-Doyle in Grants Development.

Approximately 3,000 men, women and children participated in the 62-mile walk from the Earl Warren Fairgrounds in Santa Barbara to Zuma Beach in Malibu. The fund-raiser netted approximately \$4.7 million. □



## State, United Way . . .

*Continued from page 1*

on five areas to best address what it considers the county's most pressing health and human-service needs:

- Promoting healthy lives;
- Supporting work and self-sufficiency;
- Meeting life's basic needs;
- "Investing in tomorrow's leaders"; and
- Strengthening the community.

Pledge forms, instructions and other information about the United California State Employees Campaign are being distributed to departments through campus mail. Foundation and ASI employees will receive their United Way forms from their organization's coordinator.

Employees who wish to donate to victims of the Sept. 11 attacks can do so by check or online through The September 11th Fund established by the United Way of New York City and The New York Community Trust. Checks payable to "United Way September 11th Fund" and submitted through Cal Poly's fund drives will be forwarded to the relief fund, or they can be mailed directly to: United Way, 2 Park Ave., New York, NY 10016. To donate to that fund online, go to [www.september11fund.org](http://www.september11fund.org).

Anyone with questions about the State Campaign can call Bob Anderson in Public Affairs at ext. 6-1511. Foundation employees should call Kim Miller in Foundation Human Resources, ext. 6-1122, and in ASI, call Jayme Finley, ext. 6-5751. □

## Dateline . . .

*Continued from page 1*

(English) on "Blinded by the Right: the Conscience of an Ex-Conservative" by David Brock, Library 510, noon.

**Music:** Mark O'Connor and the Metamorphosen Orchestra, Christopher Cohan Center's Harman Hall, 8 p.m. (\$) Pre-concert lecture by Alyson McLamore (Music), PAC Philips Hall, 7 p.m.

### Thursday, November 8

**Music:** Cadillac Angels, BackStage Pizza, noon.

**Homecoming:** Various activities through Sunday, Nov. 11.

**Play:** "The Miser," Theatre, 8 p.m. Nov. 8-10, 15-17. (\$)

### Friday, November 9

**Speakers:** Bob Flores (Agricultural Education and Communication), moderator, "What Did We Hear From Our Students?," Erhart Ag 241, noon. □

## Honored Alumni . . .

*Continued from page 2*

Culver & Associates Inc., a real estate brokerage firm, where he still serves as president. He was one of two grand marshals at the 2000 Cal Poly Homecoming Parade.

• **University Center for Teacher Education:** Don Morris earned a bachelor's degree in 1952 and a master's in 1959, both in physical education. Morris attended Cal Poly on an athletic scholarship. After earning a bachelor's degree, he volunteered for the U.S. Navy and became a naval aviator. He served for 40 years in the Navy Reserve, retiring in 1990 with the rank of commander. He returned to Cal Poly to earn his master's and went on to UCLA to earn a doctorate. A longtime Cal Poly professor, Morris also served the university as personnel director, housing director and dean of extended education. He was recently inducted into Cal Poly's Athletic Hall of Fame for setting records in hurdling as a freshman. He serves on the board of directors of the Cal Poly Alumni Association and the California State Senior Olympics. Morris and his wife, Jean, have established three endowments at Cal Poly: one in the University Center for Teacher Education, another in the Kinesiology Department and a third in Intercollegiate Athletics.

• **Honored Alumni Distinguished Service Award recipient:** Everett Chandler is a former Cal Poly professor and dean of students. He earned an A.B. degree from UC Berkeley in 1939, completed graduate work at UC Berkeley in 1940, and earned a doctorate from Michigan State University in 1969. From 1940 to 1941 he served as an administrative analyst for the California State Personnel Board. After a four-year stint in the U.S. Army Air Corps, he returned to work for the state of California, this time as a management analyst. The job led to his post at Cal Poly as dean of students from 1951 to 1978. Although retired, he maintains strong ties to Cal Poly and supports the Athletics and Ethnic Studies programs.

The Honored Alumni Award was established more than 30 years ago. It recognizes alumni who have proved themselves exemplary in their fields or in service to the university.

The Cal Poly Alumni Association's Distinguished Service Award recognizes exceptional service to the university or the alumni association. □

*(For more on Homecoming go to page 1.)*

## Position Vacancies

**STATE:** The official listing of staff and management vacancies is posted at least two weeks prior to closing dates on Cal Poly's Web site at [www.calpoly.edu](http://www.calpoly.edu). (Select "Employment" from the Cal Poly links drop-down box.) As a courtesy to our on-campus employees, job vacancies also are published in the *Cal Poly Report*. Positions marked with an asterisk indicate that qualified on-campus applicants in bargaining units 2, 5, 7 and 9 will be given first consideration. Job applications must be received in Human Resources, Adm. 110, by 5 p.m. on the closing date.

#196-Lead Custodian\*, Facility Services, Administration and Finance, \$2,140-\$2,781. Temporary to Feb. 15, 2002. Closing date: Nov. 9.

#197-Human Resources/Finance Training and Documentation Specialist (Information Technology Consultant-Career level)\*, Technology Services and Common Management Systems, Administration and Finance, \$3,781-\$7,740. Closing date: Nov. 9.

#198-Finance Analyst Programmer (Analyst Programmer-Career level)\*, Technology Services and Common Management Systems, Administration and Finance, \$3,781-\$7,740. Closing date: Nov. 26.

#199-Administrative Support Assistant II\*, Agribusiness, College of Agriculture, \$2,195-\$3,293. Closing date: Nov. 9.

#200-Administrative Analyst/Specialist non-exempt\*, Industrial and Manufacturing Engineering, College of Engineering, \$2,370-\$3,792. Closing date: Nov. 9.

**FOUNDATION** (Foundation Adm. Building, job line at ext. 6-7107). All Foundation applications must be received (not just postmarked) by 5 p.m. of the closing date. (No faxes.)

Student Supply Department Manager, El Corral Bookstore, \$31,259-45,360/year. Closing date: Open until filled; review of applications begins Nov. 16.

**FACULTY** Candidates are asked to contact the appropriate department office at the phone number listed for more information or to request an application. Additional information and qualifications for each position may also be obtained online at <http://www.academic-personnel.calpoly.edu>. Please submit all application materials to the department head/chair unless otherwise specified in the ad. Rank and salary are commensurate with qualifications and experience (and time base where applicable), unless otherwise stated.

#3881: Tenure-Track Assistant/Associate Professor, Kinesiology Department (ext. 6-2545). Closing date: Dec. 3.

#3933: Tenure-Track Assistant Professor (clay/sculpture artist), Art and Design Department (ext. 6-1148). Closing date: Jan. 18.

#3934: Tenure-Track Assistant Professor (digital media artist/designer), Art and Design Department (ext. 6-1148). Closing date: Jan. 18.

#3954: Tenure-Track, Department Head (12-month), Horticulture and Crop Science Department (ext. 6-2161). Closing date: Feb. 1. □