

CAL POLY Report

California Polytechnic State University
San Luis Obispo, CA 93407
Vol. 56, No. 5 • October 10, 2001

Published by Public Affairs • www.calpoly.edu/~communic/CPR/report.htm

DATELINE

(\$)—Admission charged

Exhibits

Club 221 (UU): "Digithailand: Colors and Culture." Through Oct. 26. Hours: Noon-5 p.m. Monday-Friday.

University Art Gallery (Dexter): Art and Design Faculty Exhibit. Through Oct. 26. Hours: 11 a.m.-4 p.m. daily plus 7-9 p.m. Wednesday.

Thursday, October 11

National Depression Screening Day: UU Plaza and in front of Recreation Center, 10 a.m.-2 p.m.

Speaker: Anne Goshen (Campus Relations), "Depression: There is Hope and Help," UU 220, noon.

Friday, October 12

Speaker: Bob Flores (Agricultural Education and Communication) will facilitate a discussion, "Understanding Diversity: What it Really Means," Erhart Ag 241, noon.

Men's Soccer: UC Irvine, Mustang Stadium, 7 p.m. (\$)

Volleyball: UC Riverside, Mott Gym, 7 p.m. (\$)

Saturday, October 13

Volleyball: Cal State Fullerton, Mott Gym, 7 p.m. (\$)

Football: Southern Utah, Mustang Stadium, 6 p.m. (\$)

Music: Carl Weathersby, Theatre, 8 p.m. (\$)

Sunday, October 14

Men's Soccer: Cal State Fullerton, Mustang Stadium, 5 p.m. (\$)

Tuesday, October 16

Telecomm Presentation: Learn about the upgrade to the university's telecommunications infrastructure, UU 220, 11 a.m. Oct. 16, 24, Nov. 29.

Wednesday, October 17

Speakers: Counselors from the San Luis Obispo Women's Shelter, "What's Love Got to do With This?," UU 219, 11 a.m.

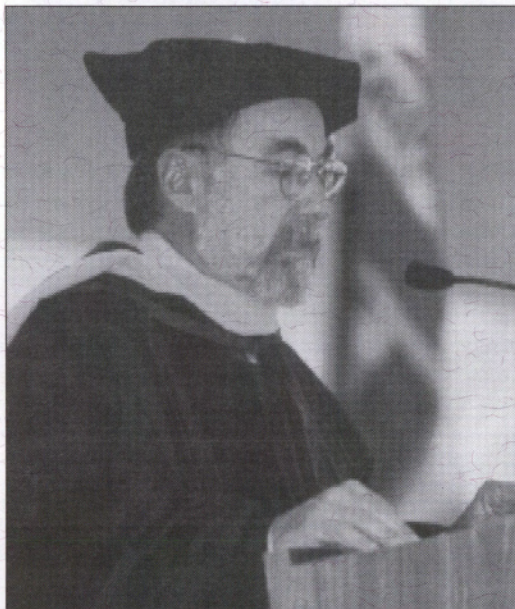
Thursday, October 18

Speakers: Students will participate in

Continued on page 8

Cal Poly celebrates a century of service

Cal Poly faculty members, students, staff, alumni and honored guests marked 100 years of service to California and the nation with the university's Founders Celebration on Sept. 27-28.



Caltech President David Baltimore delivers keynote address at the Founders Convocation.

The two-day celebration commenced Thursday evening with a colloquium, which brought together leaders from academe, government and the private sector. Cal Poly President Warren J. Baker moderated a panel discussion featuring David Baltimore, Nobel Prize laureate and president of Caltech; Gary Bloom, a Cal Poly alumnus and president and CEO of Veritas Software; Rita Colwell, director of the National Science Foundation; and Richard DeMillo, vice president and chief technology officer of Hewlett-Packard.

The colloquium topic, "Educating a Diverse Population for the Nation's Science and Technology-based Economy," prompted a wide-ranging conversation. Panelists brought the

perspectives of national science policy, higher education and industry to bear in commenting on this important national challenge. The panelists also discussed ways in which universities, industry and government can work to ensure that a new generation of innovators, problem solvers and leaders is educated for a century increasingly dependent on science and technology.

An academic procession and convocation followed on Friday morning to commemorate Cal Poly's rich history as a center of learning. Under a canopy on Dexter Lawn, members of the campus community, alumni and guests assembled for the Founders Convocation. The convocation celebrated Cal Poly and its special place in California and higher education. It also marked a recommitment to the fundamental purpose of American education.

The more than 1,000 participants and guests at the convocation included representatives from universities, colleges and institutions around the world. President Baker shared reflections on Cal Poly's first century and expressed appreciation to the university's faculty for establishing a distinctive tradition of teaching and learning that retains critical relevance to the needs of a new century. President Baker was joined in conferring honorary doctorates on David Baltimore and Rita Colwell by Laurence K. Gould Jr., chair of the CSU Board of Trustees, and CSU Chancellor Charles B. Reed. Baltimore delivered the event's keynote address, "Dual Roles for Universities: Generating Knowledge and Jobs."

An All-University Picnic, held at the Sports Complex, rounded out the festivities with music, games, sporting events, picnic fare and a 100-foot cake. More than 5,500 students, faculty and staff members, alumni, and community members joined in the afternoon celebration. (For more Founders Celebration photos, please see pages 4-5.)

Hoffman determines age of oldest settlement in NE Asia

In collaboration with Chinese earth scientists, Physics Professor Ken Hoffman has determined that ancient stone tools found in northern China more than two decades ago are 1.36 million years old.

Fixing the age shows that the tools represent the earliest known presence of humans in Northeast Asia, according to an article published in the September issue of the journal *Nature*.

The work is important because it provides a piece of the puzzle tracing the path and timing of human migration throughout the Paleolithic Age, according to editors at *Nature*.

Hoffman was invited to Beijing in March 2001 by Professor Rixiang Zhu of the Chinese Academy of Sciences after extensive research conducted by Zhu's group at the Institute of Geology and Geophysics on the ancient dry-lakebed sediments in which the stone tools were found.

The true age of the tools had remained a mystery since their discovery in the remote Nihewan Basin at the Xiaochangliang archaeological site.

Establishing their age proved difficult because they were found in sediments lacking the usual natural materials that typically allow scientists to determine age through carbon dating or other radioactive-isotope dating methods.

While in Beijing, Hoffman was able to review the Chinese data and help establish the age of the stone tools using the already determined "magnetostratigraphy" of the sediment section.

"We know that Earth's magnetic field 'flips' polarity from time to time," Hoffman said, "causing compass needles to switch direction from pointing northward to pointing southward, or back again. And for the last several polarity reversals the ages are rather precisely known."

Magnetic particles in each sediment layer record the direction of the field at the time they are deposited and hold that direction through the ages.

Hoffman determined the sequence of magnetic polarity recorded in the ancient sediment section from well above to well below the layer in which the stone tools were found.

Rick Potts, director of the Human Origins Program at the Smithsonian's National Museum of Natural History and a co-author, helped provide the context and determine the significance of the result. □

Perspectives on diversity to be focus of discussions

In support of the university's 1998 "Statement on Diversity," the Cultural Awareness Committee will host a series of fall quarter discussions designed to elicit feedback from students about their experiences of diversity on the campus.

"The goal is to explore how we, as a campus community, can facilitate understanding and the inclusion of diverse people, ideas and experiences," said Chris Parker-Kennedy, academic advisor in the Disability Resource Center. "Now, more than ever, we need to listen to what our students have to say."

Professor Bob Flores of the Agricultural Education and Communication Department will facilitate a discussion on "Understanding Diversity: What it Really Means" noon-1 p.m. Friday (Oct. 12) in Room 241 in the Erhart Agriculture Building.

Several Cal Poly students will participate in a Student Perspectives Panel 11 a.m.-noon Oct. 18 in the BioResource and Agricultural Engineering Building, Room 123. The students will provide insight into such topics as:

- The impact of cultural issues on academic performance and social integration.
- Conflicts that may have arisen from being outside the "norm."
- Suggestions for improving the campus climate for students from a range of backgrounds.

Jean DeCosta, university ombud and director of campus relations, will moderate the panel.

A follow-up meeting, "What Did We Hear From Our Students?," will be noon-1 p.m. Nov. 9 in the Erhart Agriculture Building, Room 241. At the meeting, Flores will lead a discussion of the issues identified and ideas generated by the Student Perspectives Panel.

For more information, contact Bonnie Krupp at ext. 6-5406 or Gail Simmons, ext. 6-2803. □

University Police trained to use defibrillators

Members of the University Police Department have been trained to use automatic external defibrillators, electronic medical devices used to treat people who have suffered cardiac arrest.

When applied to the patient's chest, the device automatically analyzes the patient's heart rhythm and – if appropriate – prompts the user to deliver a "biphasic" electronic pulse that is intended to restore an acceptable heart rhythm.

Two automatic external defibrillators are in police vehicles, and a third is kept in reserve for use at campus events.

"The use of such equipment, training and emergency service is expected to provide significant benefits to the community regarding serious medical emergencies," Chief of Police Tony Aeilts said. □

General Ed technology planning workshops set

Faculty members who have ideas for courses designed to help students understand technology better are invited to one of two General Education workshops.

By 2003 Cal Poly will need more courses in General Education Area F, the upper-division technology elective. The workshops, planned for Oct. 17-18, are intended for anyone interested in proposing an Area F course for the 2003-05 catalog.

"Area F is ideal for examining new emerging technologies in courses that may not fit the usual curricular boundaries," said Jim Mueller, area chair of the Science, Mathematics and Technology Committee, "and provides an opportunity to address how these technologies impact society."

Courses in technology are integrative, building on the scientific and mathematical knowledge from Area B/foundation courses and are offered at the upper-division level.

The first workshop, on Oct. 17, will be noon-1 p.m. and the second, on Oct. 18, will be 11 a.m.-noon. Both workshops will be in Room 229-E in Faculty Offices East.

To sign up for a workshop, e-mail gened@polymail.calpoly.edu or call Jim Mueller at ext. 6-2465 or Katie Tool at ext. 6-2228.

For more information on Area F/technology, go to the General Education Web site at www.calpoly.edu/gened and click on "Faculty/Staff Members" and "General Education 2001 Standards/Criteria." □

CPR schedule

The *Cal Poly Report* is published every Wednesday during the academic year. Send articles to Public Affairs by 10 a.m. Wednesday for the following week's edition. Items can be e-mailed to polynews@polymail, faxed to ext. 6-6533, or mailed to Public Affairs, Heron Hall. For more information, call ext. 6-1511. □

Christopher Cohan Center opens doors for tours

The Christopher Cohan Center will be open for self-guided backstage tours 1-3 p.m. Sunday (Oct. 14) and guided art tours from 1 p.m. to 3 p.m. Nov. 11.

The tours are part of "Second Sundays," a year-round series of free events and performances at the Christopher Cohan Center held on the second Sunday of the month.

The self-guided backstage tours are a top-to-bottom, behind-the-scenes look at the Performing Arts Center. They offer a glimpse into the standard operations of the center, such as ticketing and sound engineering, as well as an opportunity to climb up into the hall's chandelier, down into the trap room beneath the stage, and to run the follow-spot light.

The tour includes the control booth, follow-spot booth, main stage and stage manager's console, and house manager's podium in the main lobby.

Attendees that stop at each station on the tour will be entered into a raffle for free tickets and other center memorabilia. Information will be provided about upcoming performances, volunteer and employment opportunities at the center, and local performing arts organizations.

On Nov. 11, Christopher Cohan Center docents will give tours providing in-depth information about art in the center, including the recently dedicated "Corn Mother" sculpture, and the center's architecture. Tours will be available every 10-15 minutes between 1 and 3 p.m. For more information, call the Performing Arts Ticket Office at ext. 6-2787. □

Leave solicitation

Mark Welch, a custodian in Facility Services, has qualified for personal catastrophic leave.

Eligible state employees may donate vacation credit and sick leave to help him remain in full-pay status during an extended absence.

Those interested in donating leave should contact Edie Griffin-Shaw in Facility Services at ext. 6-5220 or by e-mail.

CSEA employees in units 2, 5, 7 and 9 plus "academic professionals" in unit 4 may donate up to 32 hours total. All other state employees may donate up to 16 hours sick leave and/or vacation credits per fiscal year in increments of one hour or more. □

Depression Screening Day Thursday at UU, Rec Center

All employees, students and family members can learn about the signs and symptoms of depression and participate in a free, confidential screening as part of National Depression Screening Day on Thursday (Oct. 11).

The program is sponsored by Health and Counseling Services and the Employee Assistance Program and will be held in the UU Plaza area and in front of the Recreation Center. Representatives from those offices will be on hand 10 a.m.-2 p.m. distributing materials and administering confidential, written self-tests for depression.

Participants will learn about the causes, symptoms and treatments of depression and will have an opportunity to discuss confidentially with a mental health professional the results of their written tests.

A presentation on depression will be given in UU 220 between noon and 1 p.m. (See related story below, right.)

National Depression Screening Day, held each year during Mental Illness Awareness Week, inaugurated the concept of screening for mental illness when it began 10 years ago.

Depression is a medical illness, not a weakness, and treatments are available. Those who are clinically depressed often feel that the pleasure has gone out of their lives. They feel sad and empty and often have trouble sleeping and eating. Additional symptoms can include thoughts of suicide or death, fatigue or loss of energy, inability to concentrate, and restlessness or decreased activity.

For more information on depression screening, contact the Employee Assistance Program at ext. 6-0-EAP (6-0327) or Counseling Services at ext. 6-2511. □

Scholarship winners choose College of Agriculture

Cal Poly's College of Agriculture is the college of choice for several of the 2001 Calcot-Seitz scholarship winners.

For 22 years, the Calcot-Seitz Foundation of Bakersfield has awarded scholarships to select high school and college agriculture students from California and Arizona.

This year, of the record 17 scholarships totaling \$51,000, six were awarded to incoming Cal Poly students.

Two of the Cal Poly winners earned the Calcot-Seitz Directors' Award, which honors the top students from each state.

Jason Ghilarducci and Blake Wilbur each received a scholarship and a Directors' Award.

Ghilarducci, a junior transfer student from Bakersfield College, is studying crop science. Wilbur, a freshman from Tulare Western High School, is majoring in agribusiness.

Honorees Greg Gonzalez, Michael Newton, Danilu Ramirez and Peter Rietkerk also joined the College of Agriculture this fall quarter as Calcot-Seitz scholars.

The Calcot-Seitz Foundation was established by G. L. "Sam" Seitz when he retired as president of Calcot Ltd., a marketing cooperative. □

Depression to be topic of talk Thursday at noon

Anne Goshen, an Employee Assistance Program counselor in the Campus Relations office, will talk on "Depression: There is Hope and Help" at noon Thursday (Oct. 11) in UU 220.

"These are troubling times for all of us," said Goshen. "We may feel uncertain, hopeless, powerless. For those who are already coping with their own or a loved one's depression, it may seem overwhelming."

Anyone interested in learning more about coping with the depression that can follow traumatic events as well as understanding and managing other types of depression should plan to attend the presentation, part of the university's observation of National Depression Screening Day.

Goshen's talk will explain how to recognize the symptoms of depression and the factors that can cause depression, how to help those – including yourself – who are suffering from depression, and how to determine if professional help is needed. □

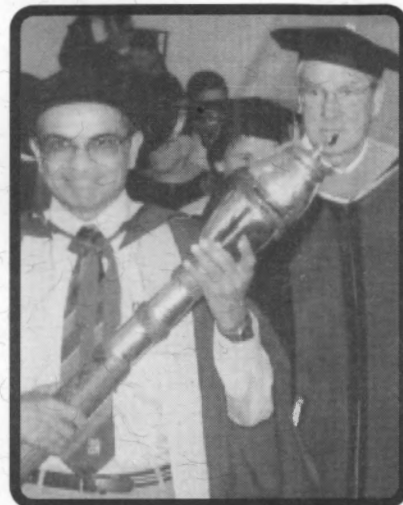
Ticket information

Tickets to the performances listed in today's *Cal Poly Report* are on sale at the Performing Arts Ticket Office 10 a.m.-6 p.m. weekdays and 10 a.m.-4 p.m. Saturdays. Call ext. 6-2787, or fax your order to ext. 6-6088. Tickets can also be bought online via Tickets.com. Visit the Performing Arts Center's Web site at pacslo.org and click on "Event Calendar." □

Founders Celebration Colloquium, Procession



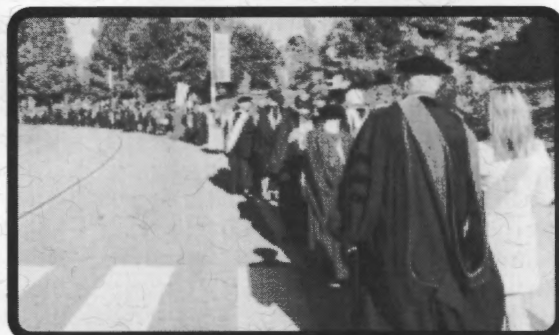
President Baker moderates the Founders Colloquium, 'Educating a Diverse Population for the Nation's Science and Technology-based Economy.' Panelists were Rita Colwell, director, National Science Foundation; Gary Bloom, president and CEO, Veritas Software; David Baltimore, president, Caltech; and Richard DeMillo, vice president and chief technology officer, Hewlett-Packard.



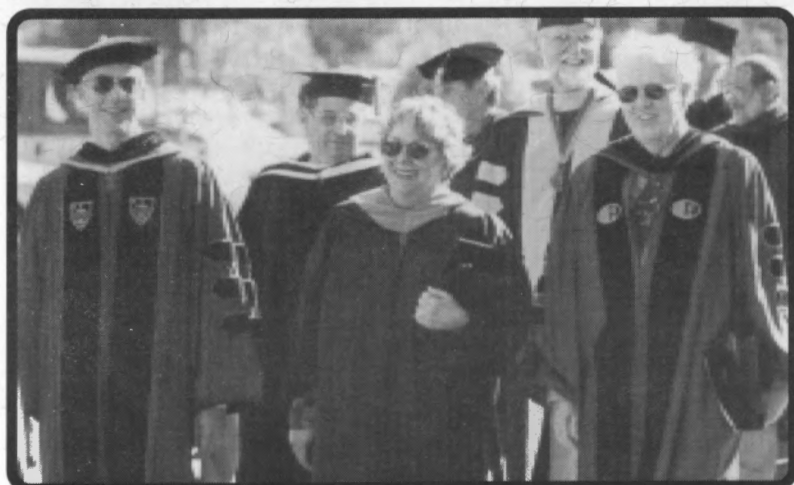
Academic Senate Chair and Industrial Engineering Professor Unny Menon carries Cal Poly's Centennial mace, crafted by Art and Design Professor Crissa Hewitt, during the procession.



Colloquium panelists (left to right): Gary Bloom, David Baltimore, Rita Colwell, President Baker and Richard DeMillo.



The procession winds down Perimeter Road toward Dexter lawn.

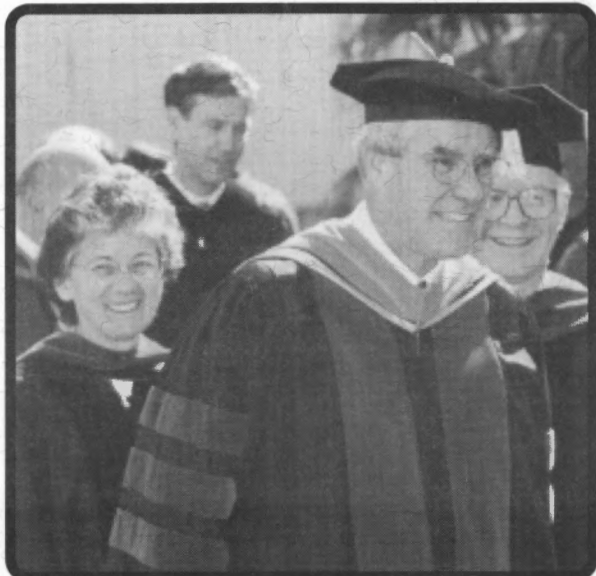


Carly Baker and Jim Jamieson (right), Centennial Celebration consultant, join other university delegates in the procession.

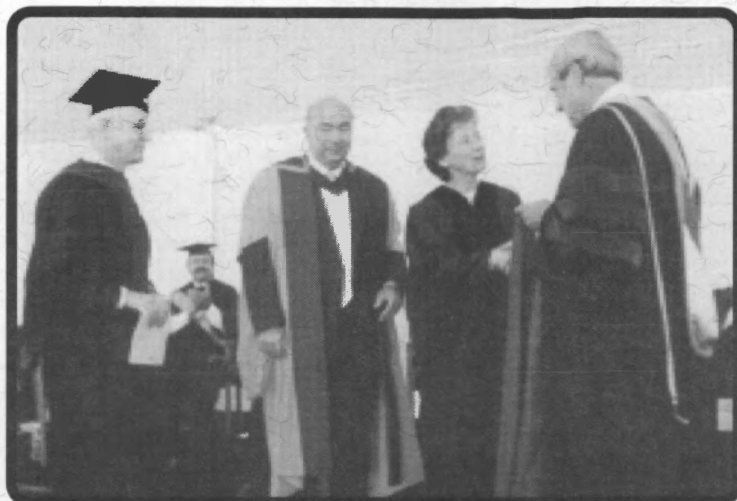


ASI President Angie Hacker addresses the audience during the Founders Convocation.

Founders Celebration continues with food, fun and games



President Baker (front, center) with Rita Colwell, director of the National Science Foundation (left), State Sen. Jack O'Connell (rear, center), and Laurence Gould Jr., chair of the CSU board of trustees.



President Baker (right) with CSU Chancellor Reed (center) confers honorary doctorate on Rita Colwell, while Laurence Gould Jr., chair of the CSU board of trustees (left), looks on.



University delegates, faculty and staff members, students and alumni attend the Convocation



Procession marshals Sonja Glassmeyer, professor of kinesiology, and Brent Hallock, professor of soil science.



'Townball' players and spectators had a 'ball.'



The barbershop quartet Grand Avenue serenades students during the All-University Picnic.

Telecomm presentations set for October, November

Facilities Planning has scheduled three presentations to give the campus community an opportunity to learn about Telecomm, a project to upgrade the university's telecommunications infrastructure.

The presentations will be held 11 a.m.-noon on Tuesday (Oct. 16), Oct. 24 and Nov. 29, all in UU 220.

Telecommunications in all state-owned buildings will be upgraded over a two-year period beginning January 2002. Each classroom and computer lab will be equipped or upgraded with voice, video and data connections.

The project will affect the library, information technology center, core academic buildings, faculty and staff offices and other support services.

For more information, contact Leslie Anne, project information coordinator for Facilities Planning, at ext. 6-6806 or lanne@calpoly.edu. □

Funds available for Faculty Development

The Faculty Development Program provides an opportunity for probationary faculty members to receive funding for research and other scholarly activities with the ultimate goal of helping them through the tenure and promotion processes.

Awards are made on a competitive basis for mini-research grants, travel to professional conferences, and for funds to hire temporary replacement faculty members for assigned-time awards (four to eight units per quarter).

The deadline to submit applications is Nov. 8. For program guidelines, information and applications, stop by the Campus Relations office in Room 114 in the Health Center. □

Commuters needed for Santa Maria area van pool

Two vacancies have opened up in the van pool from the Santa Maria area.

The van serves commuters working 8 a.m.-5 p.m., and the cost is approximately \$56 a month.

For more information, contact Deby Anderson, coordinator of commuter and access services with the University Police, at ext. 6-6680 or djanders@calpoly.edu. □

Film 'Rachel's Daughters' to be shown Oct. 24

In observance of national Breast Cancer Awareness Month, Women's Programs will screen "Rachel's Daughters," a film about breast cancer, on Oct. 24.

After the film, which shows at 5:30 p.m. in Philips Hall in the Performing Arts Center's Christopher Cohan Center, attendees are invited to stay for refreshments and a discussion.

"Rachel's Daughters" was made by the Oscar-winning filmmakers of "In the Shadow of the Stars," a documentary that follows a group of women breast-cancer activists who are either fighting or have survived the disease and are on a mission to unearth the causes of breast cancer.

The result is "Rachel's Daughters," a documentary that has been called an engaging detective story that details and analyzes the science and politics of this epidemic that strikes one in eight women.

Seeing themselves as "spiritual heirs" of author Rachel Carson, whose 1962 book "Silent Spring" warned of the dangers of DDT exposure, the women in the film focus on issues such as chemical

contamination, radiation and electromagnetic exposure to find the causes of breast cancer.

"Rachel's Daughters" addresses environmental racism, inequalities in research funding, and disparities in cancer rates for women of color, and tracks the effects of social biases on cancer incidence and health-care delivery.

"Incorporating interviews with prominent scientists, documentary footage from high-cancer-rate areas, and the investigations of women's personal battles to stay healthy, 'Rachel's Daughters' offers a scientifically rigorous and intensely affecting view of this growing epidemic," said Susanne Kelley, coordinator of Women's Programs. "The film is an unprecedented warning of the dangers of industrialization and an inspiring rallying cry for those working to change current views about women's health."

The program is sponsored by Student Life and Leadership, Women's Programs, and Cancer Action Now. For more information, call Kelley at ext. 6-2600. □

Domestic violence to be focus of Oct. 17 event

In observance of national Domestic Violence Awareness Month, the Women's Programs office will present "What's Love Got to do With This?," a candid discussion about domestic violence, 11 a.m.-1 p.m. Oct. 17 in UU 219.

Counselors from the San Luis Obispo Women's Shelter will talk about dating and violence.

"Statistics show that, worldwide, one in three women experiences some form of abuse," said Susanne Kelley, coordinator of Women's Programs.

"Domestic violence is not just a husband-and-wife issue," said Kelley. "Abuse is seen in many forms other than physical; sometimes it is verbal, and sometimes it is emotional."

Participants will learn to recognize the signs of abuse and methods of prevention. The counselors will also talk about roommate abuse, an often unspoken problem for college students.

For more information, call Kelley at ext. 6-2600. □

Julio Iglesias added to Cal Poly Arts lineup

Grammy winner Julio Iglesias will perform as part of Cal Poly Arts' Center Stage series at 8 p.m. Oct. 29 in the Christopher Cohan Center's Harman Hall.

In 1983 Iglesias received the first and only Diamond Record Award ever given to a performer by the Guinness Book of World Records for selling more records in more languages than any other musical artist.

Iglesias's latest Spanish-language album, "Noche De Cuatro Lunas," is a collaboration with such contemporary Latin music composers and producers as Robi Rosa, Alejandro Sanz, Zazé di Camargo, Ruben Blades and Estefano.

The Latin Academy of Recording Arts and Sciences named Iglesias Man of the Year in 2001.

Tickets are \$65 and \$75. □

Francis Jerald Holley, 78

Jerry Holley, former registrar and director of admissions, died Aug. 30 in Redmond, Ore. Holley served as registrar from 1961 to 1968 and as director of Admissions until 1983, when he retired. □

Choirs to perform fall concert Oct. 27

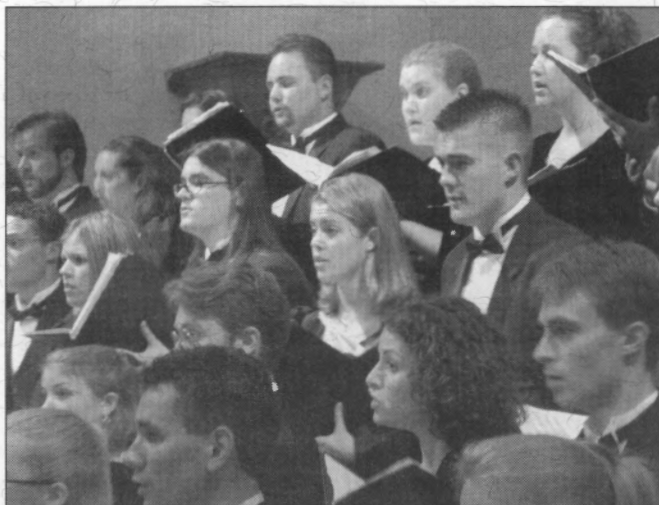
The Cal Poly choirs will perform selections in a variety of styles at their annual fall concert Oct. 27. The concert, at 8 p.m. at the First Baptist Church in San Luis Obispo, will feature PolyPhonics, The University Singers, Cal Poly Vocal Jazz, and the barbershop quartets Here Comes Treble and Grand Avenue.

The program will include works by Mozart, Brahms, Stephan Chatman and Gabriel Fauré and spirituals arranged by Moses

Hogan. Music Professor Thomas Davies conducts the choirs. PolyPhonics will be accompanied by Susan Azaret Davies, and The University Singers will be accompanied by Catherine Harvey, both members of the Music Department.

The First Baptist Church is at 2075 Johnson Ave. Tickets are \$6 to \$10 and may be purchased at the door.

The concert is sponsored by the Music Department, College of Liberal Arts and Instructionally Related Activities program. For more information, call ext. 6-2406. □



Members of The University Singers

Wine tasting among Extended Studies courses

Extended Studies is offering October and November courses ranging from wine and beer tasting to computer software.

- Introduction to Flash 5.0, 6-9 p.m. Wednesdays, Nov. 7-Dec. 12, \$225. This overview of Flash workspace for the beginner will cover stage, tools, panels, grids, guides and rulers. Students will work with drawing and painting using the oval and rectangle tools, brushes and fills as well as exploring movie properties and using keyframes, frame rate and editing frames.

- Microsoft Access for Your Office, 6-9:30 p.m. Thursdays, Oct. 11-Nov. 15, \$298. Learn to manage and manipulate large amounts of data such as customer lists, employee records and product listings. Students will learn to set up a database, create tables, build forms, generate queries and run reports, as well apply wizards, properties, masks, filters, find-and-sort options and shortcuts. The final three meetings will focus on customizing forms and reports, creating a main menu switchboard, and generating dozens of queries such as cross tabs, calculations, make table, delete, append and updates. Students will also learn to import and export

data to other programs such as Word and Excel.

- Wines of the Central Coast – The Rising Stars, 6:30-8:30 p.m. Thursdays, Oct. 18-Nov. 15, \$175. The Central Coast wine scene provides students with a plethora of new wines to taste and winemakers to meet. Students will taste new-wave wines and meet special guest winegrowers and winemakers. Rhone varietals, “Cal-Itals,” blends and “new clones,” and techniques will be showcased. Students must be at least 21.

- The Sensory Evaluation of Beer, 9 a.m.-5 p.m., Nov. 3 & 4, \$185. An introduction to the sensory evaluation of beer and ale followed by a discussion regarding commercial production. The styles of beer and ales will be compared based on their characteristics using the technique of flavor-component tasting. Students will learn some of the common flaws found in beer and ales. The methods, techniques and tests used to conduct the sensory evaluation of beer will be explored. Students must be at least 21.

For complete course descriptions and to register online for some courses, go to the Extended Studies Web site at www.ExtendedStudies.calpoly.edu or call ext. 6-2053. □

Faculty, staff, students invited to play slo-pitch

Employees and students are invited to participate in the second annual Cal Poly Slo-Pitch Softball Tournament on Oct. 19.

Games start at 4 p.m. at the Sports Complex. The \$115 per-team fee includes game balls and 10 baseball-style shirts. The event is co-recreational; at least four of the 10 players on the field must be female.

Space is limited. Sign up at the Recreation Center. For more information, call Mike, Randy or Joe in the Intramural Sports Department at ext. 6-1366. □

Cat program raffle set for September-October

The nonprofit Cal Poly Cat Program will hold a fall raffle during September and October.

Tickets cost \$1 each or six for \$5. All proceeds from the Nov. 1 drawing will go toward veterinary expenses and cat shelter supplies. Ticket purchases are considered tax-deductible donations.

Prizes include a \$25 El Corral gift certificate, an overnight stay at The Cliffs hotel in Shell Beach, a feng shui consultation, a certificate for use of a hot tub, and prizes handmade by Cal Poly employees.

Tickets can be bought from Karleyne Binford, ext. 6-7050; Geri Bolivar, ext. 6-2321; Jane Brechler, ext. 6-2553; Edie Griffin-Shaw, ext. 6-5220; Gerry Mueller, ext. 6-6004; Ellen Notermann, ext. 6-1625; and John Sullivan, ext. 6-1717.

For more information on the program or cat adoption, contact Griffin-Shaw. □

Bluegrass mandolinist David Grisman to play

Contemporary bluegrass mandolinist and composer David Grisman and his band will perform in concert at 8 p.m. Oct. 27 in Harman Hall in the Christopher Cohan Center.

The David Grisman Quintet performance is a new addition to the 2001-2002 Cal Poly Arts season.

For nearly 40 years, Grisman has been creating “dawg” music, a blend of swing, bluegrass, Latin, jazz and gypsy influences. The combination of styles spawned

Continued on page 8

Position Vacancies

STATE: The official listing of staff and management vacancies is posted at least two weeks prior to closing dates on Cal Poly's Web site at www.calpoly.edu. (Select "Employment" from the Cal Poly links drop-down box.) As a courtesy to our on-campus employees, job vacancies also are published in the *Cal Poly Report*. Positions marked with an asterisk indicate that qualified on-campus applicants in bargaining units 2, 5, 7 and 9 will be give first consideration. Job applications must be received in Human Resources, Adm. 110, by 5 p.m. on the closing date.

#182-Administrative Support II*, Graphic Communication, College of Liberal Arts, \$2,694-\$4,045. Closing date: Oct. 10.

FOUNDATION (Foundation Adm. Building, job line at ext. 6-7107). All Foundation applications must be received (not just postmarked) by 5 p.m. of the closing date. (No faxes.)

Assistant Supervisor, Light House, Campus Dining, \$9.79-\$14.19/hour. Closing date: Open until filled; review of applications begins Oct. 19. □

Grisman . . .

Continued from page 7

a new genre of acoustic string music.

Dubbed "the Paganini of the mandolin" by The New York Times, Grisman has been praised for his mastery of the instrument and his talents as a composer, bandleader, teacher and record producer.

Since 1990, Grisman has produced 45 critically acclaimed albums of acoustic music, five of which were nominated for Grammy Awards.

Tickets are \$26 and \$32. □

Dateline . . .

Continued from page 7

a Student Perspectives Panel, BioResource and Agricultural Engineering 123, 11 a.m. Jean DeCosta (Campus Relations) will moderate.

Friday, October 19

Music: The Chenille Sisters, Theatre, 7 p.m. (\$)

Volleyball: Long Beach State, Mott Gym, 7 p.m. (\$)

Women's Soccer: Idaho, Mustang Stadium, 7 p.m. (\$) □

Ag Ambassadors gather at Cal Poly



More than 60 Cal Poly Ag Ambassadors took time out from a recent training retreat on campus to pose for a picture under some of Cal Poly's Centennial Celebration banners.

'Campus Invasion' planned to promote ASI

ASI is planning a "Campus Invasion" on Monday (Oct. 15) and Oct. 18 to give students and the faculty and staff an opportunity to learn about ASI and its various programs and services.

The two-day event will feature a variety of activities, including live music, carnival-type games, virtual skateboarding, lawn bowling and free snacks.

Representatives from Poly Escapes, the McPhee's Games Area, student government, Club Services, ASI Events, Recreational Sports and Children's Programs will be on hand to provide information and answer questions.

The event kicks off at 11 a.m. Monday on Dexter Lawn, where tents will create an "ASI Village." Stop by and throw Nerf balls at a giant "moon man," get a temporary tattoo, enjoy free popcorn and lemonade, and enter the numerous drawings for a variety of giveaways.

From 7 to 9 p.m. Monday, two cast members from the "Real World" television show will be at the Cal Poly Theatre. Syrus from the "Real World Boston"

show and Julie from "Real World New Orleans" will talk about their life experiences and the time they spent on "Real World." Their talk is intended to help college students relate to such topics as diversity, getting along in a new environment, being open to new experiences, and the value of education.

ASI Events will present the band Two-A-Day during university hour, 11 a.m.-1 p.m., on Oct. 18 in the UU Plaza. ASI Village will be set up in the plaza area, offering another afternoon of festival-style activities.

"We're inviting the entire campus community to spend time playing, eating and seeing firsthand the programs and services that ASI has to offer," said ASI President Angie Hacker. "We want to raise awareness about ASI and its four facilities – the UU, the Recreation Center, the Orfalea Family and ASI Children's Center, and Sports Complex."

For more information, call Corey Reihl, ASI vice president, at ext. 6-5826, or Diana Cozzi, ASI events coordinator, ext. 6-7007. □