

CAL POLY Report

California Polytechnic State University
San Luis Obispo, CA 93407
Vol. 55, No. 8, October 25, 2000

Published by Public Affairs • www.calpoly.edu/~communic/CPR/report.htm

DATELINE

(\$) – Admission charged

Exhibits:

Club 221 (UU): "What's In a Name?," self-portraits by student and faculty artists. Through Dec. 8. Hours: noon-5 p.m. Monday-Friday.

University Art Gallery (Dexter Building): "Work on Paper," various media on paper by 39 Thai artists. Nov. 1-Dec. 3. Gallery Talk: 7 p.m. Nov. 2, Vichoke Mukdamanee (Silpakorn University, Bangkok, Thailand). Opening reception: 8-9 p.m. Nov. 2 Hours: Daily 11 a.m.-4 p.m. and Wednesday, 7-9 p.m.

Wednesday, October 25

Health Fair: "Think, Act, Prevent," UU-220, 11 a.m.

Political Satire: Capitol Steps, PAC Cohan Center, 8 p.m. (\$)

Thursday, October 26

Mathematics Colloquium: Vladimir Uspenskiy (Lomonosov University, Moscow), "Algorithmic Roots of Gödel's Incompleteness Theorem," Pilling Computer Science 253, 4:10 p.m.

Physics Colloquium: Peter Schwartz (Physics), "Molecular Transport From an AFM Tip: Nanolithography With Everything From Nonpolar Molecules to DNA Strands," Science E-45, 11 a.m.

Friday, October 27

Speaker: Zafar Iqbal (Accounting) "The COB New Building: How It All Came to Be," Business Building 113, 3:30 p.m.

Men's Soccer: Cal State Northridge, Mustang Stadium, 7 p.m. (\$)

Volleyball: Boise State, Mott Gym, 7 p.m. (\$)

Saturday, October 28

Football: Hofstra, Mustang Stadium, noon. (\$)

Volleyball: Utah State, Mott Gym, 7 p.m. (\$)

Sunday, October 29

Men's Soccer: UCSB, Mustang Stadium, 5 p.m. (\$)

Continued on page 4

Fanfare for veterans . . .



The Cal Poly Wind Orchestra and the Mustang Marching Band will play a tribute to America's veterans at Bandfest 2000 on Nov. 18 at the PAC Cohan Center. (See story on page 6.)

Master Plan, draft EIR available for review

Cal Poly's new Master Plan, including a draft Environmental Impact Report, is available for public review through Dec. 4.

Two public meetings are scheduled for discussion of the plan. The first will be 5:30 to 7:30 p.m. Nov. 15 at the Monday Club, 1815 Monterey St. The second will be 10:30 a.m.-noon Nov. 16 in UU 220.

The Master Plan envisions enrollment growth, over the next 20 years, of about 17 percent over the present academic-year capacity of 17,900 students. The increase translates to an approximate headcount of 20,900 students and about

Continued on page 2

Play ball! Cal Poly's new Sports Complex now open

The Cal Poly Sports Complex officially opened Oct. 20, almost two years after the ceremonial groundbreaking.

President Baker, ASI President Sam Aborne and members of the Athletics department were on hand for opening ceremonies.

The complex includes six lighted fields for use by athletic teams and ASI intramural and club teams, and new softball and baseball stadiums.

The Cal Poly baseball team will play its first game in the newly named Baggett Stadium on Jan. 21 against Stanford. The softball team will open the recently named Bob Janssen Field on Feb. 10 against Fresno State. □

Price of gas got you down? Commuter Services can help

Paying too much for gasoline? The Commuter and Access Services office has a solution.

It's called car pooling.

"Even one or two days a week will save you money," said Deby Anderson, coordinator of the program. Anderson works with the local Regional Rideshare office to raise awareness about the benefits of ride sharing.

To place your name into the ride-matching system, call Anderson at ext. 6-6680 or call the county Rideshare office at 541-2277.

Cal Poly car poolers qualify for the university's Registry program and can earn daily stipends and other incentives.

"Don't waste your money on the oil companies," Anderson said. "Share the cost, reap the benefits."

For more information on car pooling and other alternative forms of transportation, call Anderson. □

Capitol Steps to perform political satire tonight

Cal Poly Arts will present the political comedy troupe Capitol Steps at 8 p.m. today (Oct. 25) in the Performing Arts Center's Cohan Center.

Formed in the early '80s when Ronald Reagan was president, Capitol Steps co-founders and former Congressional staff members Elaina Newport, Bill Strauss and Jim Aidala decided that, "Since entertainers could become politicians, politicians could become entertainers."

The group has been featured on national PBS specials, numerous television shows, and public radio stations around the country. The troupe has performed more than 5,000 shows nationwide and recorded 20 albums of non-partisan skits and parodies.

"No matter who holds office, there's never a shortage of material," states Newport. "Typically, the Republicans goof up and the Democrats party. Then the Democrats goof up and the Republicans party. That's what we call the two-party system."

Tickets range from \$22 to \$34, and student discounts are available. □

Master Plan, draft EIR available for review . . .

Continued from page 1

3,200 faculty and staff members during the traditional academic year.

The final plan reflects input from campus and community members received during the preliminary draft review period that ended in June.

Some of the major changes made since the preliminary draft include:

- Addition of a draft Environmental Impact Report;
- Redistribution of proposed new student residences and relocation of some recreational fields in order to establish a Brizzolara Creek Enhancement Area to protect natural resources and enhance outdoor teaching and learning;
- A section focusing on academic plans for enrollment growth;
- A list of continuing studies that need to be conducted to implement the Master Plan, including design guidelines, alternative transportation, and site development for new instructional facilities, green space, student housing, and UU and child care center expansion;
- A more clearly designated location for a Visitor Center at the corner of Grand Avenue and Slack Street as well as a modest-sized applied research park in the Goldtree area in the northwest corner of the Cheda Ranch;
- Inclusion of only properties in San Luis Obispo County only. A plan for

Swanton Pacific Ranch in Santa Cruz County will be developed later.

The Master Plan focuses on redeveloping and consolidating academic facilities within an expanded core, protecting natural environmental features, and sustaining outdoor teaching and learning lands.

A central feature of the plan considers the creation of new student residential communities accommodating approximately 3,000 additional students.

Enhanced student services, recreational facilities and parking would be provided, and provision of faculty and staff housing is being explored.

This is the first time since 1962 that a complete redrafting of the Master Plan has taken place.

After the public review period, the draft Environmental Impact Report will be refined. The Master Plan will be presented to the CSU Board of Trustees for approval in spring 2001, coinciding with Cal Poly's Centennial.

The Master Plan is available for review at www.campusprojects.calpoly.edu or at the Cal Poly and San Luis Obispo libraries. Copies of the plan may be obtained from the Facilities Planning office (ext. 6-6806) on CD-ROM free of charge or in print for a nominal fee to cover reproduction costs.

Comments about the plan should be e-mailed to blowe@calpoly.edu. □

CPR schedule change

Please note the *Cal Poly Report* is changing the deadline for two upcoming issues because the campus will be closed for Veterans' Day, Friday, Nov. 10, and for the Thanksgiving holiday, Thursday and Friday, Nov. 23-24.

Items are due to Public Affairs by 10 a.m. Tuesday, Nov. 7, for the Nov. 15 issue and by 10 a.m. Monday, Nov. 20, for the Nov. 29 issue.

Please also note that the Dec. 6 edition is the final one for fall quarter. The *Cal Poly Report* is not published during quarter break. Winter quarter publication will resume Jan. 10.

Items can be e-mailed to polynews@polymail, faxed to ext. 6-6533, or mailed to Public Affairs, Heron Hall.

For more information call ext. 6-1511. □

Ticket information for events at Cal Poly

Tickets to the performances listed in today's *Cal Poly Report* are on sale at the Performing Arts Ticket Office 10 a.m.-6 p.m. weekdays and 10 a.m.-4 p.m. Saturdays. Call ext. 6-2787, or fax your order to ext. 6-6088.

Tickets can also be bought online via Tickets.com. Visit the Performing Arts Center's Web site at pacslo.org and click on "Event Calendar."

Information on Cal Poly Arts events, including audio and video samples of artists' work, can be found on the Web at www.calpolyarts.org. □

Funds available to develop service-learning courses

Academic Affairs and Student Affairs have formed a partnership to promote the development of service-learning courses that integrate substantive scholarship, sound pedagogy and useful community service.

Faculty Instructional Development and Class and Community Connections are offering 10 grants during the 2000-2001 academic year to train and support faculty members in designing new or substantially modifying existing service-learning courses.

Teachers chosen for the program will receive three units of release time or equivalent compensation to fund travel, research and equipment, to be determined by each faculty member and his or her department chair/head and dean.

All full- and part-time faculty members, including tenured, tenure-track and lecturers are eligible to apply. Applications are due by 5 p.m. Nov. 3.

For information on what will be expected of the awardees, the review process and selection criteria, or to request an application form, contact Bud Evans at ext. 6-2808, 541-6770, or eevans@calpoly.edu. □

Cal Poly Choirs to perform fall concert

In its annual fall concert on Nov. 4, the Cal Poly Choirs will perform music from around the world, including pieces from the Renaissance to music of today.

The concert, at 8 p.m. at the First Baptist Church, 2075 Johnson Ave., San Luis Obispo, will feature PolyPhonics, the University Singers, Cal Poly Vocal Jazz and the barbershop quartets Here Comes Treble and Grand Avenue.

The program will include works by Johann Pachelbel, Alessandro Scarlatti, Ludovico Viadana, Eric Thiman, Craig Kingsbury, Gene Puerling, Oscar Galián, and Réjean Marois.

The choirs are conducted by Music Department faculty member Thomas Davies and accompanied by staff member Catherine Harvey.

Tickets are \$6 for students and senior citizens and \$10 for the public. The concert is sponsored by the College of Liberal Arts, Music Department, and Instructionally Related Activities program.

For more information, call the Choral Operations Center at ext. 6-6683 or the Music Department, ext. 6-2406. □



Tish Hinojosa

Tish Hinojosa to play

Singer-songwriter Tish Hinojosa will perform at 8 p.m. Nov. 1 in the Performing Arts Center's Cohan Center.

Hinojosa's musical style blends folk, country, pop and Hispanic music. Her Cal Poly appearance is part of a tour supporting her latest, critically praised release, "Sign of Truth."

Hinojosa's career has taken her from small coffee houses to the White House. She has become nationally known for her ability to dissolve the boundaries between cultures, languages and musical genres.

Spin magazine called her songs "Richly detailed, delicious slices of life ... Hinojosa's is a poetic, sensual and conscious voice." The Boston Globe called her performance "utterly without pretension ... moving ... touching."

Tickets cost \$16 to \$28, and student discounts are available. □

ASI continues to sponsor Child Care Food Program

ASI continues to sponsor the Child Care Food Program for children enrolled at the Children's Center.

ASI has helped fund the program continuously since 1978, and last year contributed \$34,000. The funding helps provide breakfast, lunch and snacks with a minimal increase in childcare fees.

The food program also gives nutrition majors at Cal Poly and Cuesta experience through employment and participation as part of a laboratory class.

For more information call Evelyn Ruehr, Children's Center food service manager, at ext. 6-6191. □

Music by Craig Russell played at Kennedy Center

Music arranged by professor and Grammy-nominated composer Craig Russell was performed at the Kennedy Center in Washington, D.C., last week. The performance was part of the center's celebration of its Millennium Stage State Days series.

The Cuarteto de las Misiones (formerly the San Luis Obispo Symphony String Quartet) performed an arrangement by Russell that combines newly rediscovered music of the California missions, mountain music and reels of the eastern United States, and the chamber music enjoyed in 18th-century Europe's finest salons.

The quartet, nominated by Congresswoman Lois Capps to represent California, presented a narrated musical journey comparing the unique and different styles of mid-18th-century Western culture.

Russell served as the narrator for the quartet, providing information on the California missions and subsequent life in California's rancho period and the music that would have been performed during the mission and rancho periods.

In the past several years, Russell has received wide recognition for uncovering a wealth of music originally performed in California and Mexico during the Colonial days. His discoveries proved there was a far richer musical life on the West Coast of the United States than was previously thought. Because of Russell, works by European immigrants to California and Mexico, once performed by the Chumash and Salinan people, are being performed for the first time in 200 years. □

Extended Studies seeks part-time instructors

Extended Studies is recruiting qualified part-time instructors to teach in the areas of business, e-business applications, and information technology.

Qualifications include formal education or training in the subject area, the ability to apply knowledge, and an excitement for sharing knowledge with others.

Extended Studies classes meet evenings and weekends both on and off campus. Send a letter of application and resumé to Instructor Search Committee, Extended Studies. □

Incompleteness theorem topic of Math Colloquium

Russian mathematician Vladimir Uspenskiy from Lomonosov University in Moscow will talk on "Algorithmic Roots of Gödel's Incompleteness Theorem" at the next Mathematics Colloquium from 4:10 to 5 p.m. Thursday (Oct. 26) in Room 253 in the Pilling Computer Science Building.

In 1931 Austrian mathematician Kurt Gödel proved the incompleteness theorem, one of the deepest theorems in mathematics.

The theorem says that given any proof system, there is a true statement that cannot be proven within the system.

Gödel found a precise formulation and proof of his theorem.

In his talk, Uspenskiy will try to unearth the roots of the theorem, which lie in computability theory.

Uspenskiy is an expert in the fields of mathematical logic, theory of algorithms, foundations of mathematics, non-standard analysis, and axiomatic probability theory. He is chair of the Department of Mathematical Logic and Theory of Algorithms at the Lomonosov University. □

Administrative policies being updated

A comprehensive review Cal Poly's administrative policies is under way and will result in a new collection of Campus Administrative Policies (CAP), to be published on the Web and in hard-copy format. CAP will take the place of the existing Campus Administrative Manual (CAM).

Beginning fall quarter, CAP is to be published as follows:

1. When policies have been reviewed by the CAP Ad Hoc Editorial Coordination and Review Committee (or "CAP Committee"), they will be posted on the "Draft CAP Policies" Web page (<http://policy.calpoly.edu/capdraft/draftTOC.htm>). While in draft form the policies will be made available for general university review and comment. They will not have official status as university policies.

2. After policies have been through legal and administrative review and approved by President Baker, they will be posted as interim policies on the "Interim/Final CAP Policies Web Page" (<http://policy.calpoly.edu/cap/finalTOC.htm>).

The interim status will last one month, during which time the policies will be reviewed and revised. □

CAL POLY

CENTENNIAL CELEBRATION

To commemorate Cal Poly's Centennial, we are running this column of university history, upcoming Centennial events and additional tidbits that we hope you find interesting. The editors thank University Archives for providing much of the historical information.

Historical Highlights

1901 - 2001

- Leroy Burns Smith is appointed director of Cal Poly in 1908.
- The first student body association is formed in 1909 to govern athletics, publications and social events.
- In 1913 the time necessary to complete the course of study is lengthened from three years to four.
- The Annual Farmer's Picnic is combined with the Decennial Celebration in 1913. Special trains are scheduled to bring 3,000 visitors to campus.
- In June 1914 Robert Weir Ryder is appointed director.
- In 1916 an academic department for college preparatory work is added to the three original departments of Agriculture, Engineering/Mechanics and Household Arts.

...

• 1901-2001 •

'Bulletin board' policy expands to include e-mail

President Baker recently announced the following revision of the University Bulletin Board Policy:

In recognition of the increasing use of electronic means of communication on campus, the university's official Web site and campus directives issued by electronic mail (e-mail) will be treated as an extension of the university's Official Bulletin Board for purposes of posting and notifying the campus community about university rules, regulations and policies. Hard copies of the materials can be obtained from the Kennedy Library Reserve Desk. □

Dateline . . .

Continued from page 1

Tuesday, October 31

Books at High Noon: James Cushing (English), "Dreaming the Garden" by Ann Stanford, Veranda Café, 12:10 p.m.

Wednesday, November 1

Speaker: William Hiatt (Calgene/Monsanto), "The Technology Behind Ag Biotechnology," UU 220, 3:10 p.m.
Men's Soccer: San Jose State, Mustang Stadium, 7 p.m. (\$)
Music: Folksinger Tish Hinojosa, PAC Cohan Center, 8 p.m. (\$)
Friday, November 3

Speaker: Frank Mumford (Foundation), "The Future of the Cal Poly Foundation," Business Building 113, 3:30 p.m.
Women's Soccer: UCSB, Mustang Stadium, 7 p.m. (\$)
Saturday, November 4

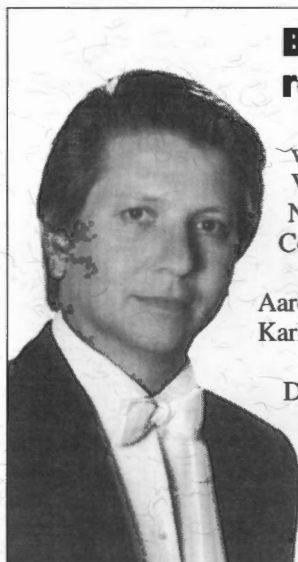
Parents Appreciation Day
Football: Northern Iowa, Mustang Stadium, 1 p.m. (\$)
Music: Cal Poly Choirs Fall Concert with PolyPhonics and Cal Poly Vocal Jazz, First Baptist Church, San Luis Obispo, 8 p.m. (\$)
Sunday, November 5

Comedy: Gay and Lesbian Comedy Night with Kate Clinton, PAC Cohan Center, 8 p.m. (\$)
Tuesday, November 7

Books at High Noon: Bob Hunt (English Emeritus), "House of Fog" by Andre Dubus III, Veranda Café, 12:10 p.m.
Thursday, November 9

Play: Theatre and Dance Department's "A Midsummer Night's Dream." (Nov. 9-11 and 16-18.) Theatre, 8 p.m. (\$) - □

cancelled



Baritone Benno Schollum to give recital, master class

Benno Schollum, world-class baritone and teacher of voice and diction at the Universität für Musik Wien in Vienna, Austria, will perform a benefit recital at 8 p.m. Nov. 13 in the Pavilion in the Performing Arts Center's Cohan Center.

He will perform works by Franz Schubert, Carol Loewe, Aaron Copland, Kurt Weill, and operetta arias by Franz Lehar, Karl Millöcker and Robert Stolz.

Schollum will also conduct a master class 6:30-9 p.m. Nov. 14 in Davidson Music Building 218.

He performs with many of the world's major symphonies and opera companies and has given master classes at the Royal Academy of Music and Royal College of

Continued on page 6

Benno Schollum

Cal Poly Arts takes over YOPAC for area children

In a new initiative designed to complement existing adult outreach efforts, Cal Poly Arts has launched Poly Arts for Youth (PAFY), a K-12 youth outreach program, offering field trips and in-school activities to Central Coast schools.

Taking over the program formerly run by YOPAC (Youth Outreach for the Performing Arts Center), Cal Poly Arts will provide local area school children and teachers with opportunities to enjoy low-cost student matinee performances at the Performing Arts Center and in-school arts education activities during the 2000-01 school year.

"Poly Arts for Youth exposes children to diverse, high-quality arts events and develops their creativity and sense of discovery," said Ralph Hoskins, director of Cal Poly Arts.

Poly Arts for Youth performances feature the professional artists that appear in the Cal Poly Arts subscription series, in specially adapted 60-minute matinee performances and lecture-demonstrations for classrooms and assemblies.

Some field trips are already sold to capacity. Tickets remain for student matinee performances of Tish Hinojosa on Nov. 1; "Cyrano de Bergerac," Feb. 7; and the New Shanghai Circus, March 19.

For more information, call Cal Poly Arts at ext. 6-6556. □

Administrative policies . . .

Continued from page 4

ing which time the campus community will have a final opportunity to offer comments and suggestions. Interim policies will have official status as university policies.

3. Interim policies will become final policies after one month if no comments have been received by the CAP Committee chair. Any submitted comments will be considered by the CAP Committee before the policy is finalized. (Any proposed changes at this stage will require additional legal and administrative review and presidential approval.)

4. CAP will be published in hard-copy format after all policies have progressed from draft to final status.

5. As CAM policies are superseded by new Interim/Final CAP policies they will be retired. Until then, all CAM policies and Administrative Bulletins will remain in effect as official university policies.

6. A hard-copy version of all Interim/Final CAP policies may be viewed in the Kennedy Library Reserve Room.

The campus will be notified in the *Cal Poly Report* as new CAP policies move to draft, interim and final status. The notification will include old CAM policies that are being retired.

The CAP Web site will also feature general information and periodic updates about CAP development and the publication process. Questions about CAP may be directed to Daniel Howard-Greene, executive assistant to the president and chair, CAP Ad Hoc Editorial Coordination and Review Committee. Call ext. 6-6000 or e-mail dhgreene@calpoly.edu. □

Comics take center stage at Performing Arts Center

Three stand-up comedians whose topics range from politics to family relationships will perform at Gay and Lesbian Comedy Night at 8 p.m. Nov. 5 in the Performing Arts Center's Cohan Center.

Political comedian Kate Clinton and comics Bob Smith and Marga Gomez will perform as part of Cal Poly Arts' New Directions series.

Clinton's agenda includes political material, modern family relationships, and perspectives on life as a gay American. The Boston Herald called her "a savvy, witty observer of American life."

She writes monthly columns for *The Progressive* and *The Advocate* and has written for *The New York Times* and the *Rosie O'Donnell Show*.

Gomez has worked in theater, films and on television as well as performed stand-up routines. She began working in San Francisco in the 1980s. "Being a woman in comedy was not a popular concept in the Reagan years," Gomez said. "Add Latina and gay to the equation and it seemed as though my only option was food stamps."

In 1984, she formed Culture Clash, a group of five Latino comedians whose cutting-edge satire became their trademark and Gomez's specialty.

Gomez writes and performs theatrical monologues across the country. Her "Memory Tricks," a comic remembrance of growing up in a show business family, was called "wise and moving beyond all expectation" by the *Chicago Sun Times*, and the *London Evening News* called it "brilliant" and "dazzling."

Smith is the author of the best-selling book "Openly Bob," which won the Lambda Literary Award, and "Way to Go, Smith," which has crossed over to mainstream audiences. He tours extensively, performing his stand-up routines and has appeared on "The Tonight Show with Jay Leno" and "Politically Incorrect with Bill Maher."

He recently joined the writing staff of FOX-TV's late-night comedy show "Mad TV" and has written for Dennis Miller, the MTV Video Awards show, and Roseanne Barr.

Proceeds from the event will benefit the Gay and Lesbian Alliance of the Central Coast. The program contains adult themes and mature language.

Tickets cost \$16 to \$28, and student discounts are available. □

**Faculty and staff payday:
Oct. 31**

Position vacancies

STATE: For a complete listing of employment opportunities for state staff and management positions, you can:

- Check Cal Poly's Web site at www.calpoly.edu. Select "Employment" from the Cal Poly links drop-down box;
- Come to the HREE office, Adm. 110, and view the posted positions;
- Call the HREE Job Line at ext. 6-1533.

For a listing of new openings, check The Tribune's Sunday edition.

Please note that applications for job openings must be received in the Human Resources and Employment Equity office, Adm. 110, by 5 p.m. on the closing date. Envelopes postmarked by the deadline will not be accepted.

If you have questions, please call HREE at ext. 6-2237.

FOUNDATION (Foundation Adm. Building, job line at ext. 6-7107). All Foundation applications must be received (not just postmarked) by 5 p.m. of the closing date. (No faxes.)

Cook - Campus Dining, Vista Grande, \$10.73-13.95/hr. Closing date: Open until filled; review of applications begins Nov. 3.

ASSOCIATED STUDENTS INC. is accepting applications for the following position(s). Complete position descriptions and applications are available at the ASI Business Office, University Union, Room 212, M-F, 8 a.m.-5 p.m., ext. 6-5800. All applications must be received by 5 p.m. of the listed closing date. AA/EOE.

Office Assistant, Recreational Sports, part-time, temporary through June 30, 2001, \$10.87/hr. Closing date: Nov. 1.

Benno Schollum . . .

Continued from page 5

Music in London, the Franz Schubert Institute, Marseille Conservatoire, and the University of Southern Mississippi.

Tickets are \$25 for the recital and \$15 for the master class, with student discounts available.

Proceeds from both events will go toward student vocal scholarships and the Music Building fund.

The events are sponsored by the Music Department and are partially funded through the Cal Poly Plan.

Event information is also available on the department's Web page at www.calpoly.edu/~mu.

For more information, call the Music Department at ext. 6-2607. □



Cal Poly Wind Orchestra

America's veterans to be recognized at Bandfest 2000

The Cal Poly Wind Orchestra and the Mustang Marching Band will combine forces in a musical tribute to American veterans at Bandfest 2000, set for 8 p.m. Nov. 18 in the Performing Arts Center's Cohan Center.

Veterans who attend will be recognized during the program.

"We want to attract local veterans to this concert," said Music Professor and orchestra conductor William Johnson. "This is their event. We've selected the music with them in mind, and we don't want them to miss it."

Johnson calls the evening a "wind instrument spectacular," where 175 musicians will first perform Morton Gould's "American Salute," a piece based on the Civil War song "When Johnny Comes Marching Home."

"The stirring sounds of 'American Salute' will set the mood for the evening," Johnson said.

The program will include other dramatic compositions.

- "Et In Terra Pax" (Peace on Earth) by Jan Van der Roost was inspired by a poem written by a young man just before he was killed in action during World War I. "The music will provide an appropriate setting for the reciting of the poem," Johnson said.

- The "National Emblem" march by E.E. Bagley, based on America's

national anthem, is second only to Sousa's "Stars and Stripes Forever" as America's most popular march, according to Johnson.

- "Symphony No. 1, In Memoriam, Dresden, Germany, 1945" by Daniel Bukvich, a contemporary musical description of the bombing of the city of Dresden, Germany, by the Allied Forces in 1945 during the final weeks of World War II, will be enhanced by lighting effects.

The Mustang Marching Band will perform musical highlights from this season's football halftime shows, including selections from Igor Stravinsky's ballet "Firebird."

The Wind Orchestra will open the last segment of the concert with Carman Dragon's arrangement of "America the Beautiful."

Another piece, David Holsinger's "To Tame the Perilous Skies," was commissioned by the U.S. Air Force Band and was written for the wind orchestra as a tribute to the modern fighter pilot.

The concert will conclude with songs from each branch of the Armed Services.

Tickets cost \$7 to \$15. Bandfest 2000 is sponsored by the College of Liberal Arts, Music Department and ASI. □