

CAL POLY Report

California Polytechnic State University
San Luis Obispo, CA 93407
Vol. 55, No. 4 • September 27, 2000

Published by Public Affairs • www.calpoly.edu/~communic/CPR/report.htm

DATELINE

(\$) – Admission charged

Exhibits:

University Art Gallery (Dexter Building): John Mendenhall Retrospective. Through Oct. 21. Closing reception: 6-8 p.m. Oct. 21. Hours: Daily 11 a.m.-4 p.m., Wednesday 7-9 p.m.

Wednesday, September 27

Music: Jim Holder, BackStage Pizza, noon.

Thursday, September 28

Physics Colloquium: Ted Foster (Physics), "A Selection of Atmospheric Science Items Related to Undergraduate Physics and Teaching," Science E-45, 11 a.m.

Friday, September 29

Women's Soccer: Cal State Bakersfield, Mustang Stadium, 7 p.m. (\$) **Music:** Ladysmith Black Mambazo, PAC Cohan Center, 8 p.m.

Sunday, October 1

Women's Soccer: St. Mary's, Mustang Stadium, 1 p.m. (\$)

Monday, October 2

Music: The Black Watch and the Band/Choir of the Prince of Wales' Division, Rec Center, 7 p.m. (\$)

Tuesday, October 3

Music: Guy Budd, BackStage Pizza, noon.

Wednesday, October 4

Music: Trio Vanguard, BackStage Pizza, noon.

Music: Mingus Band, PAC Cohan Center, 8 p.m. (\$) Pre-concert lecture, Paul Rinzler (Music), Philips Hall, 7 p.m.

Thursday, October 5

Music: Cadillac Angels, BackStage Pizza, noon.

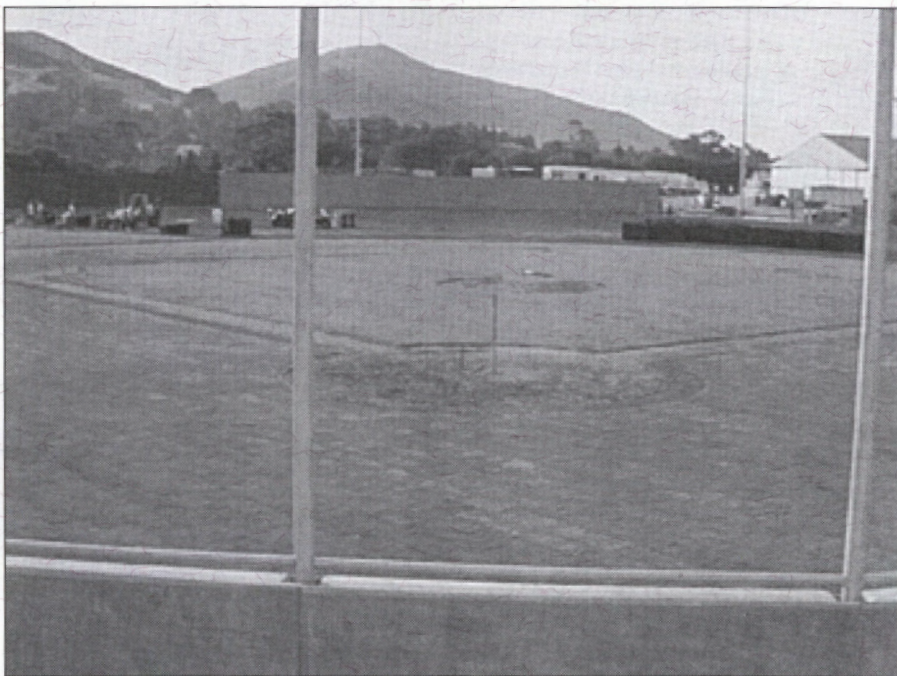
National Depression Screening Day: UU Plaza, 10 a.m.-2 p.m.

Mathematics Colloquium: Tom O'Neil (Mathematics), "Clutching for Survival: The California Condor Restoration Project," Pilling Computer Science 253, 4:10 p.m.

Friday, October 6

Music: Jive & Direct, BackStage Pizza, noon.

Women's Soccer: UOP, Mustang Stadium, 5 p.m. (\$) □



Field of Dreams . . . The new baseball stadium will be named in honor of alumnus, former baseball player and Athletic Hall of Fame member Robin Baggett.

New stadium to be named after Robin Baggett

The baseball stadium at the new sports complex will be named in honor of alumnus, former baseball player and Athletic Hall of Fame member Robin Baggett.

"We are extremely pleased to be able to recognize the many contributions of Robin Baggett," President Baker said in announcing the name. "Robin's support of the university and our athletic pro-

gram has been outstanding. His long-time financial support and personal involvement with the baseball program for over 30 years are unmatched. We are proud that this beautiful new facility will appropriately recognize his many contributions."

Continued on page 5

Jamieson to consult for Centennial Celebration

President Baker announced that James B. (Jim) Jamieson is joining Cal Poly as a planning consultant for the university's Centennial Celebration.

In this role, Jamieson will work with a broad-based university steering committee to finalize plans for the year-long celebration, which is to include a series of special Centennial events and activities.

As founding executive director of the Foundation for the Performing Arts Center

from 1987 to 1995, Jamieson played a key role in developing the center, which has quickly become a Central Coast landmark.

His success in that role and his contributions to the arts were recognized by Cal Poly with the President's Arts Award in 1999, a recognition he shared with his wife, Perry, a well-known artist and arts community leader. Before coming to the

Continued on page 4

Disaster recovery experts meet on campus

An international array of experts in disaster recovery and post-disaster mitigation planning recently participated in a Disaster Recovery Performance Needs Assessment Seminar held on campus.

Teams from Venezuela, Honduras, Mexico, Nicaragua, the Dominican Republic and Costa Rica presented disaster recovery case studies, held brainstorming sessions, and discussed training needs and recovery and implementation plans.

The workshop was held to develop criteria for a larger multi-year effort to provide training and assistance activities at Cal Poly, according to William Siembieda, head of the City and Regional Planning Department.

The workshop was sponsored by the College of Architecture and Environmental Design's City and Regional Planning Department and the College of Engineering's Civil and Environmental Engineering Department. □

Rideshare Week to be next week

Faculty and staff members and students who pledge to bike, walk, car pool, van pool or take the bus to campus at least one day during California Rideshare Week, Oct. 2-6, will be eligible to win prizes.

Pledge forms will be sent to all employees, and those who pledge will be entered in both a campus and a San Luis Obispo County Rideshare prize drawing.

Campus prizes include a T-shirt, shoeshine kit, an oak note pad and pen stand, and more. The county grand prize is a weekend trip to Santa Barbara with round-trip transportation on Amtrak.

Pledge forms are available at University Police and in the UU Plaza from 11 a.m. until 1 p.m. during Rideshare Week.

Pledge forms must be returned to Computer and Access Services by Oct. 9.

Questions should be directed to Deby Anderson, commuter and access services coordinator, ext. 6-6680. □

Friday is faculty/staff payday.

Francis F. Whiting

Francis F. Whiting, engineering technology professor emeritus, passed away on June 17 at a care facility in Minneapolis. Whiting taught at Cal Poly from 1946 until 1970.

Digital control systems topic of IEEE talk

Kip Haggerty, a systems engineer from Lawndale, will discuss digital control systems at the next meeting of the Central Coast section of the Institute of Electrical and Electronics Engineers on Tuesday (Oct. 3). Haggerty will talk on "Lessons Learned in Digital Control Systems: Does Theory Really Matter?" from 7 to 8 p.m. in Engineering East, Room 206.

The meeting is open to everyone. Refreshments will be provided at approximately 6:30 p.m. □

National Depression Screening Day is Oct. 5

As part of national Mental Illness Awareness Week, Cal Poly will hold a National Depression Screening Day 10 a.m.-2 p.m. Oct. 5 in the UU Plaza. Employees, students and their families are invited to learn about the signs and symptoms of depression and to participate in a free, confidential screening.

People who feel sad and empty, those who have trouble sleeping or eating, and those who feel that the pleasure has gone out of their lives might be clinically depressed. Other symptoms include thoughts of suicide or death, fatigue or loss of energy, inability to concentrate, and restlessness or decreased activity. Depression is a medical illness — not a weakness — and treatments are available.

Representatives from Health and Counseling Services and the Employee Assistance Program will be in the UU Plaza distributing material and administering confidential written screening self-tests for depression. Participants will learn the causes, symptoms and treatments of depression and individuals will be given an opportunity to discuss the results of their written test with a mental health professional.

For more information, call the Employee Assistance Program at ext. 6-0-EAP (0327) or Counseling Services at 6-2511. □

Assigned time available to develop proposals

To stimulate research activity, the Research and Graduate Programs office will consider requests for assigned time for the specific purpose of preparing grant or contract proposals.

Many faculty members have indicated that it is difficult to prepare proposals while carrying a full teaching load — especially if they are new to the process or if it involves multidisciplinary projects involving several investigators.

Faculty members who wish to apply for assigned time should request it in writing and indicate the number of WTUs requested, the academic term for which the request is made, the agency or program for which the proposal is being prepared, and the application deadline.

Additional information that supports the request, such as preliminary work accomplished either on the project or on the proposal development, should also be included.

Requests should be signed by the department head or chair and dean and sent to the dean of research and graduate programs. Applicants should also include a current C.V. and a list of other university support received during the last five years.

Although special consideration will be given to requests that are matched with assigned time from the college, it is not required.

Requests will be linked to proposal deadlines and can be submitted any time during the academic year; however, because funds are limited, requests made early in the academic year, or even before the start of the year, will have a greater likelihood of approval.

It is anticipated that three to six WTUs will be provided and reimbursed at the minimum faculty replacement level for an assistant professor.

For more information, call Research and Graduate Programs at ext. 6-1508. □

Ticket information

Tickets to the performances listed in today's *Cal Poly Report* are on sale at the Performing Arts Ticket Office 10 a.m.-6 p.m. weekdays and 10 a.m.-4 p.m. Saturdays. Call ext. 6-2787, or fax your order to ext. 6-6088. □

London Study Program accepting applicants

The London Study Program is accepting faculty applications for teaching in London either in fall 2001 or spring 2002.

The primary emphasis in the selection process will be to choose faculty members who offer the courses needed by the participating students. Final selection will be determined chiefly by student course selection because, while faculty development is an important element of London Study, the program is driven by the curriculum needs of the students.

To encourage junior faculty members to participate, a stipend of up to \$2,500 is available to those under the rank of full professor. To help with additional living expenses, this "scholarship" is available to those who meet the following criteria: 1) demonstrated teaching excellence; 2) ability to teach a course in the program's "core curriculum" and 3) demonstrated need for financial assistance.

The stipend is intended to encourage participation by faculty members who have previously considered the cost of living in London to be too great.

During this fall quarter, a single committee will screen candidates for both sessions.

Although the curricular emphasis has been on general education courses in the humanities and social sciences, the program encourages and supports participation by teachers in the professional areas also. To date, about one-fourth of the London faculty members have come from colleges outside Liberal Arts.

Cal Poly's London campus in the spring is in the academic heart of the Bloomsbury district, within two blocks of the British Museum. In the fall, the program is in the Kensington district.

Applications have been sent to all dean's offices and are also available from the International Education and Programs office, Room 108 in the Math and Science Building (ext. 6-6161).

Applications must be submitted in duplicate by Oct. 27 for departmental approval, then forwarded via the applicant's dean to the London Study Program's faculty screening committee, in care of program director John Snetsinger.

For more information, call Snetsinger at ext. 6-5969.

The program coordinator is Miriam Rabban. □

Deadlines set for faculty support grants

It's time to think about submitting proposals for the State-Faculty Support Grants program, which supports research, scholarship, and creative activities that help faculty members remain current in their disciplines. The work should also be intended to strengthen California socially, culturally and economically.

Faculty members in Bargaining Unit 3 are eligible to compete for funding. Priority will be given to non-tenured faculty members, to those in disciplines with few outside sources of support, and to projects likely to attract external funding.

The four types of support are:

- Mini-grants of up to \$5,000, to be expended during the academic year.
- One- or two-month summer fellowships to initiate, continue or complete a creative scholarship or research project. Awards will be made only to faculty members who will return to work at Cal Poly the following fall quarter.

• Assigned time for research, creative activity or scholarship.

• A quarter leave at full pay to develop or complete an appropriate activity related to one's academic discipline.

Deadlines to submit proposals are:

- Summer 2001 fellowships: Dec. 1, 2000.
- 2001-2002 academic-year awards (mini-grants, assigned time, quarter leaves): First day of spring quarter 2001 (April 2).

Proposals are due in the Research and Graduate Programs office in Room 155 in the Science and Math Building by 4:30 p.m. on the deadline date. For guidelines, call ext. 6-1508, stop by the office, or go online to www.calpoly.edu/~rgp.

Funding for academic-year awards, to be announced in May, is contingent on next year's budget. □

Fresno State prof to talk on military dynamism

Victor Hanson, fifth-generation grape farmer from the San Joaquin Valley and a professor of classical Greek at Fresno State, will talk on "Carnage and Culture: Military Dynamism and the Rise of Western Civilization" at 4 p.m. Oct. 6 in Room 286 in Fisher Science Hall.

Hanson is the author of "Fields Without Dreams," a book that explores the demise of family farming in the United States. His most recent works, to be published in the coming year, include "The Land Was Everything: Letters from an American Farmer" and "Why the West Was Won: Carnage and Culture from Salamis to Vietnam."

The talk is sponsored by the departments of Political Science, Mathematics and English and the College of Liberal Arts.

For more information, call the college at ext. 6-2706. □

Hotline honors Roberts, plans next fund raiser

Gregory Roberts of Student Academic Services was recently recognized by Hotline of San Luis Obispo County for raising more than \$300 during last year's Bowl-a-thon. In all, Cal Poly participants raised more than \$1,000 for the non-profit organization.

Faculty and staff members and students can help raise money for Hotline during this year's Bowl-a-thon, planned for the weekends of Oct. 20-22 and Oct. 27-29 at Creekside Lanes in Atascadero. Four lanes have been reserved for Cal Poly on Oct. 28.

Those who can't participate, can show their support by sponsoring participants.

Hotline's trained volunteer staff has offered a variety of telephone services to county callers 24 hours a day, 365 days a year since 1970.

Cal Poly has participated in the annual Bowl-a-thon, the organization's main fund raiser, for more than 10 years.

For more information, contact the Cal Poly team coordinator, Elaine Ramos Doyle, at eramosdo@calpoly.edu or ext. 6-1740. □

Cal Poly Report schedule

The *Cal Poly Report* is published by the Public Affairs office every Wednesday during the academic year. Please remember our deadline: 10 a.m. Wednesday for the following week's edition. Items can be e-mailed to polynews@polymail, faxed to ext. 6-6533, or mailed to Public Affairs, Heron Hall. □

... Jamieson to consult

Continued from page 1

Central Coast, Jamieson enjoyed a distinguished 23-year career at The Claremont Colleges as a senior administrator and professor of government.

"No one is better qualified than Jim to bring together members of the university, alumni and Central Coast communities to realize a comprehensive, festive and joy-filled celebration of Cal Poly's first 100 years," Baker said. "We are delighted to welcome Jim back to assist the university with this marvelous endeavor."

"I am delighted to resume my active collaboration with Cal Poly," Jamieson said. "This is a very important moment for the university, a great opportunity to take stock of its many contributions to the State of California, and to consider the bright future that lies ahead." □

Aiken to retire

The campus community is invited to a retirement reception in honor of Jim Aiken of the Counseling Center 1-3 p.m. Oct. 6 in the Smith Alumni and Conference Center.

Aiken is retiring after 24 years of service. He was hired as a counselor in 1976, and was appointed associate director of the Counseling Center in 1979.

He served in an interim capacity as director, Health and Psychological Services, from 1993 to 1995, when he resumed his associate director post in the Counseling Center. □

Council members needed

The Academic Senate is seeking nominations from tenured and tenure-track faculty members to serve on the Academic Council on International Programs from 2001 to 2004.

The council was established by the CSU Board of Trustees as an advisory board to the chancellor. The group assists in developing policies and procedures relating to international educational activities. The council ensures ongoing communication and consultation between the campuses of the CSU and Office of International Programs.

Contact the Academic Senate office at ext. 6-1259 for a description of responsibilities. Nominations, a memo of interest and a C.V. are due Dec. 9. □

WINGED Workshops to start Oct. 6

GE 2001 requires that all teachers of general education courses incorporate some writing assignments to teach content material.

WINGED (Writing in General Education) Workshops, to be offered fall quarter, support faculty members in meeting the requirement.

Workshops will run for six weeks for two hours on Fridays beginning Oct. 6. No workshop will be held on the Veterans' Day holiday, Nov. 10, so the series will end Nov. 17. The workshops will be in the Business Building, Room 104.

Faculty members can choose either the morning session, 10 a.m.-noon, or the afternoon session, 1-3 p.m.

In a WINGED Workshop, faculty members will:

- Discuss connections between writing, thinking and classroom success;
- Design and test writing assignments for their disciplines;
- Establish "standards" for measuring student success;
- Learn to respond to student writing effectively and quickly.

Enrollment in each of the workshops is limited to 15. To register contact Katie Tool at ext. 6-2228 or mtool@calpoly.edu, or visit the Web site www.calpoly.edu/~acadprog/gened/WINGED for more information and to sign up.

For more information, contact Melody DeMeritt, WINGED coordinator, at ext. 6-6136 or mdemerit@calpoly.edu. □

Velasquez to play at CD release party Sept. 30

Gloria Velasquez, professor of ethnic studies and modern languages and literatures, will read her poetry, sing and play guitar with her band, "The Poetic Sins," at a CD release party from 4 to 7 p.m. Sept. 30 at Tortilla Flats restaurant in San Luis Obispo.

Velasquez is an internationally known poet and fiction writer whose themes focus on personal issues such as her Navajo roots, the Vietnam War and AIDS.

The CD, titled "Superwoman Chicana," is her first and is a companion piece to her book of bilingual poetry, "I Used to Be a Superwoman." It includes 15 poems and 10 original songs.

Justin O'Connor Martin will perform with Velasquez on the harmonica, and Jon Medina will play lead guitar. They are both Cal Poly alumni.

At the release party, Velasquez will recite poetry, and the group will play such songs as "Son in Vietnam," a tribute to Velasquez' brother, who was killed in Vietnam; "Self Portrait 1990" and "American West," songs about her Native American heritage; and "Going Home," a piece that pays homage to those who have lived with and died from AIDS.

"My music has a distinct Chicano style that includes influences from folk and 'Tex-Mex,'" Velasquez said.

For more information, visit her Web site at www.multimedia.calpoly.edu/libarts/gvelasqu/main.html, call ext. 6-2992 or e-mail gvelasqu@calpoly.edu. □

'Treasure the Tradition' theme of Homecoming 2000

"Treasure the Tradition," Cal Poly's Homecoming 2000 Oct. 20-22, will offer an opportunity for students and others to reconnect with former classmates, other alumni, teachers and friends.

The weekend's events get under way Oct. 20 with welcome receptions and dinners to recognize the Honored Alumni and the "Golden Grads," alumni who graduated in 1950 and are this year celebrating the 50th anniversary of that event.

The annual Homecoming parade in downtown San Luis Obispo and the

Mustang football game against UC Davis are highlights on Oct. 22.

Additional activities include campus tours, college receptions and a pre-game barbecue.

Homecoming festivities come to a close Sunday with a breakfast for the Golden Grads and other alumni and friends of the university. □

For more information, a schedule of events and a registration form, call the Alumni Relations office at ext. 6-ALUM (2586). □

Baseball field . . .

Continued from page 1

Baggett served as co-chair of the Athletics Department's capital campaign that raised over \$5 million for facility improvements and scholarship endowments. His past contributions and his ongoing commitment to the baseball stadium project are in excess of \$500,000.

"This is a very fitting tribute to Robin's leadership and support of Cal Poly baseball," said Athletics Director John McCutcheon. "Simply put, Cal Poly baseball would not be where it is today without Robin Baggett."

The overall Sports Complex is the result of a collaboration between the ASI, Cal Poly Athletics and many private individuals and organizations.

A two-time All-Conference and Most Valuable Player, Robin played on one of Cal Poly's most successful baseball teams. The 1971 team still holds a school record .780 winning percentage. An outstanding catcher, Baggett did not allow a single passed ball during his career. He had a fielding percentage of .990 after committing just one error as a senior and threw out more than 70 percent of opponents attempting to steal.

As a senior, Baggett was elected student body president. After he graduated with honors from the School of Business, he went to the University of California, Hastings College of Law, where he graduated in the top 2 percent of his class.

Baggett is managing partner in San Luis Obispo's largest law firm, Sinsheimer, Schielbelhut, Baggett & Tangeman. He is also general counsel for the NBA's Golden State Warriors.

"This is a great honor," Baggett said. "Cal Poly has always been special to me. I am proud to be part of such a fine institution."

A dedication ceremony will be held before the inaugural intercollegiate game against Stanford on Jan. 21. □

Physics Colloquium kicks off Sept. 28

Physics Professor Ted Foster will speak on "A Selection of Atmospheric Science Items Related to Undergraduate Physics and Teaching," as the first fall quarter Physics Colloquium, 11 a.m.-noon Sept. 28 in Science E-45.

For more information, call the Physics Department at ext. 6-2448. □



Come Blow Your Horn . . . Cal Poly Arts presents the Mingus Big Band Oct. 4.

Mingus Big Band to perform in Cohan Center Oct. 4

In celebration of the musical legacy of bass player, band leader and composer Charles Mingus, the 14-member Mingus Big Band will perform in concert at 8 p.m. Oct. 4 in the Performing Arts Center's Cohan Center.

In its current tour, the band offers a sampling of the best of Mingus' works, including politically inspired compositions from the group's latest release, "Blues & Politics."

Often referred to as one of the most important figures in 20th century American music, Mingus remained at the forefront of jazz from the 1960s until his death in 1979 at the age of 56.

The Grammy-nominated group has played to critical acclaim in cities around the country and at virtually every major jazz festival in Europe. JazzTimes and Down Beat critics and reader polls have voted the Mingus Big Band "Best Big Band" for several years running.

At the New York Jazz Awards ceremony in 1999, the group was named "Best Big Band" and "Best Touring Band."

Music Professor Paul Rinzier will give a pre-concert lecture at 7 p.m. in Philips Hall.

Tickets cost \$26-\$38, and student discounts are available. □

Dalton, City & Regional Planning win statewide awards

The California Chapter of the American Planning Association awarded the City and Regional Planning Department its Academic Award for 2000 and named Linda Dalton, professor and vice provost for institutional planning, winner of the Distinguished Leadership Award for a Professional Planner.

William Siembieda, chair of the department, accepted the Academic Award at the association's recent conference in Long Beach.

The academic honor recognizes Cal Poly's applied student projects. In announcing the award, the jury wrote, "Allowing students to take on true 'real-world' projects is perhaps one of the best

contributions a learning institution can make in training planners of tomorrow.

"This year, students at Cal Poly have attempted to tackle the challenge of providing affordable housing in Avila Beach, developing community guidelines and a draft general plan for Atascadero, and exploring growth scenarios for the Central Valley."

In recognizing Dalton's contributions, the jury wrote: "For more than 20 years, Dalton has provided exceptional leadership to the planning profession in general, and the CCAPA in particular. Dalton has devoted her life and career to educating students while serving the planning profession through her private practice." □

Enterprise Rent-a-Car to have office on campus

Cal Poly has entered into an agreement with Enterprise Rent-A-Car to provide rental vehicles from an on-campus branch office opening Oct. 1 at rates lower than state contract rates.

The service will replace (with the exception of Cal Poly buses) the aging state vehicles that employees previously used for state business. All employees, including state, Foundation and ASI, and students will be eligible to rent newer vehicles at a reduced rate for business and personal use. The Enterprise office will be in the Transportation Services Building and will be staffed with full-time Enterprise employees offering all the services of any Enterprise location.

Rates for state employees renting vehicles for university business include insurance coverage required by the university. For university-business, employees can pay for their rentals with their American Express Cal Poly corporate card, the Department of General Services blue charge card, or their department travel account number.

Another contract provision allows ASI and Foundation employees to rent vehicles for auxiliary business-related purposes. In addition, employees and students 21 and older may rent vehicles for personal use at the same rates. However, rates for personal and auxiliary use do not include collision damage waiver or supplemental liability protection. In these instances, the individual or auxiliary employee must supply their own insurance.

Auxiliaries renting vehicles for business use and employees or students renting vehicles for personal use may do so using a variety of standard payment methods, including cash, business account, or personal credit card.

Rates for vehicles are listed below and will soon be available on the Facility Services Web site via the Cal Poly home page. All rates include unlimited mileage.

Standard size	\$38/day, \$223/week
Full size	\$42/day, \$243/week
Mini-van	\$57/day, \$343/week
15-pass. van	\$93/day, \$513/week
Pick-up truck	\$49/day, \$289/week

Additional information and the branch office phone number will be published in an upcoming issue of the *Cal Poly Report*. In the meantime, reserve vehicles by calling Enterprise Rent-A-Car at 545-9111 and indicate that you are eligible for the Cal Poly rental rate. □

Math Prof O'Neil to talk on California condor project

Mathematics Professor Tom O'Neil will present "Clutching for Survival: The California Condor Restoration Project" from 4:10 to 5 p.m. Oct. 5 in the Pilling Computer Science Building, Room 253.

O'Neil will talk about his and his students' work to support the Ventana Wilderness Society in its effort to establish a flock of California condors in the Big Sur area.

"Any attempt to develop a good recovery strategy requires an accurate population projection program," O'Neil said. "Unfortunately, there are several condor traits that make construction of such a program difficult."

In his talk, O'Neil will discuss those traits and how they overcame many of the problems, including a lack of data.

"Critical to any population projection program are the survival rate data,"

O'Neil said. "No one knows the correct values, although there are estimates that can be used for first approximations. However, these data are based on observations of small populations of wild condors. No one wants to guess how the captive-bred-and-reared birds will fare in the wild."

O'Neil and his students have created a database consisting of every California condor in captivity or in the wild — living or dead — since 1987, the year the last wild condor was brought into captivity.

O'Neil will also describe the problems they encountered in creating the database and getting it into a format that has made it a useful tool for the biologists in the condor recovery project.

For more information, call the Mathematics Department at ext. 6-2206. □

Joe Goode dance group to perform Oct. 7

The Joe Goode Performance Group will give a unique "dance theater" performance at 8 p.m. Oct. 7 in the Theatre.

Since 1979 Joe Goode has been widely recognized as an innovator in the development of contemporary dance theater, incorporating the spoken word, theatrical techniques, and daring, high-velocity movement in what Goode calls "human dances."

Over the past 13 years, the company has performed annually in the San Francisco Bay Area and has been named the "Best Bay Area Dance Company" by the San Francisco Bay Guardian.

The ensemble tours extensively throughout the United States and has appeared in Canada, Europe, South America, the Middle East, Africa and, most recently, at the Cairo International Festival for Experimental Theater.

A frequent panelist and program consultant for the National Endowment for the Arts and the California Arts Council, Goode was awarded a New York Dance and Performance Award — a "Bessie" — for the 1998 creation and choreography of "Deeply There (Stories of a Neighborhood)."

Dance Professor Maria Junco will give a pre-performance lecture at 7 p.m. in Philips Recital Hall.

Tickets to this Cal Poly Arts event are \$18 and \$23, and student discounts are available. □

Position vacancies

STATE: For a complete listing of employment opportunities for state staff and management positions, you can:

- Check the Human Resources and Employment Equity Web site at www.calpoly.edu, under Employment Opportunities;

- Come to the HREE office, Adm. 110, and view the posted positions;

- Call the HREE Job Line at ext. 6-1533.

For a listing of new openings, check The Tribune's Sunday edition.

Please note that applications for job openings must be received in the Human Resources and Employment Equity office, Adm. 110, by 5 p.m. on the closing date. Envelopes postmarked by the deadline will not be accepted. If you have questions, please call HREE at ext. 6-2237.

FOUNDATION (Foundation Adm. Building, job line at ext. 6-7107). All Foundation applications must be received (not just postmarked) by 5 p.m. of the closing date. (No faxes.)

Customer Service Supervisor, Foundation Business Office, \$13.70-17.82/hr. Closing date: Open until filled; review of applications begins Oct. 6.

Research Assistant, Dairy Products Technology Center, \$12.11-15.76/hr. Closing date: Oct. 6.

Assistant Supervisor, Salad Room, Campus Dining, \$9.50-12.35/hr. Closing date: Open until filled; review of applications begins Oct. 6.

Assistant Supervisor, Dishroom, Campus Dining, \$9.50-12.35/hr. Closing date: Open until filled; review of applications begins Oct. 6. □