

CAL POLY Report

California Polytechnic State University
San Luis Obispo, CA 93407
Vol. 54, No. 12 • November 24, 1999

Published by Public Affairs • www.calpoly.edu/~communic/CPR/report.htm

DATELINE

(*\$*) – Admission charged

Exhibits

ASI Fine Arts Club 221 (formerly UU Galerie): "A Journey of the Warrior Spirit," through Dec. 10. Hours: Monday-Friday, 9 a.m.-9 p.m.; Saturday and Sunday, noon-4 p.m.
University Art Gallery (Dexter Building): "Enduring Spirit," photographs by Phil Borges, through Dec. 5. Hours: 11 a.m.-4 p.m. daily; Wednesday, 7-9 p.m.

Wednesday, November 24

Academic Holiday: Thanksgiving holiday for academic-year employees. Through Sunday, Nov. 28.

Thursday, November 25

Holiday: Thanksgiving holiday for year-round employees. Campus closed except for emergency services. Through Sunday, Nov. 28.

Friday, November 26

Women's Basketball: Northern Arizona, Mott Gym, 7 p.m. (*\$*)

Saturday, November 27

Men's Basketball: Portland State, Mott Gym, 7 p.m. (*\$*)
Music and Dance: Fiesta Navidad with Mariachi Los Camperos de Nati Cano, Harman Hall, 8 p.m. (*\$*) Pre-concert lecture, Frederick Lau (Music), Philips Hall, 7 p.m.

Monday, November 29

Men's Basketball: Cal Baptist, Mott Gym, 7 p.m. (*\$*)

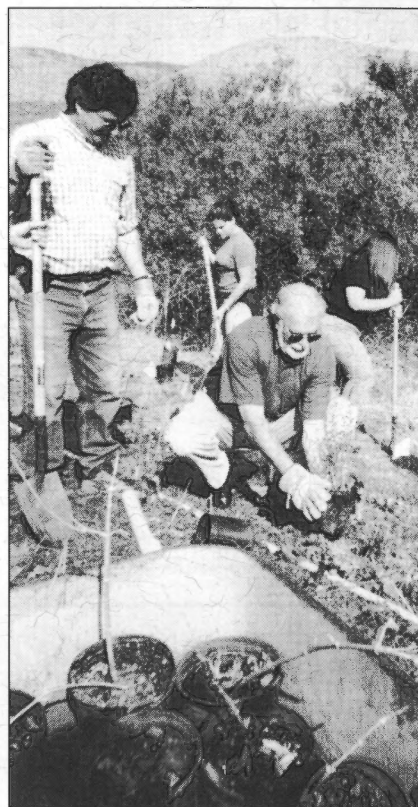
Tuesday, November 30

Winter Craft Fair: Handmade crafts by local artists and students. Also Dec. 1-2, Craft Center, 9 a.m.
Learn-at-Lunch: Sally Anderson (Cal Poly Y2K coordinator), "Last-Minute Things to Do for Y2K," Veranda Café, noon.
Music: Guy Budd, BackStage Pizza, noon.

Wednesday, December 1

Winter Craft Fair: Handmade crafts by local artists and students. Also Dec. 2, Craft Center, 9 a.m.

Continued on page 7



Provost Paul Zingg (center) and Ed Johnson, Facilities Planning (left), plant trees at Stenner Creek near the Cal Poly Sheep Unit at Cheda Ranch. Zingg and Johnson were part of a joint Cal Poly-Land Conservancy project designed to re-establish a healthy stream bank by planting native vegetation. The project aims specifically to increase the population of the endangered southern steelhead trout.

CFA president reschedules: to be on campus Dec. 1

California Faculty Association (CFA) President Susan Meisenholder (originally scheduled to visit in November) will spend Dec. 1 on campus discussing the faculty merit increase and the new Fair Share Bill that goes into effect Jan. 1.

Fair Share will require every member of a CSU bargaining unit that is represented by a union to pay a monthly fee to
Continued on page 2

Former Chico officer to lead Public Safety

Cal Poly has appointed Anthony Aeilts, a former Chico police lieutenant and a senior consultant with the state's Commission on Peace Officer Standards and Training, as the new chief of university police and director of public safety.

Aeilts will take up his post Dec. 1. He succeeds Thomas Mitchell, who retired earlier this year, and Richard Thomas, who has been serving as interim police chief since March.

Aeilts was a part-time police academy instructor at the Northern California Criminal Justice Training and Education system in Oroville, providing instruction in police tactics, constitutional law, emergency vehicle operations and community relations.

His education is in public administration. He graduated from the FBI National Academy at Quantico, Va., and is completing requirements for a doctorate in public administration from USC. Aeilts earned a bachelor's degree and master's degree from Chico State in business administration and public administration, respectively.

Public Safety Services employs 14 full-time police officers, including two police sergeants and two investigators, plus 17 full-time staff members in the areas of parking and commuter services and communications. □

CPR deadline to move in January to Wednesday

The final fall quarter *Cal Poly Report* will be out Dec. 8. Please submit items for that issue by 10 a.m. Dec. 2.

The *Cal Poly Report* is not published during quarter break.

When *Cal Poly Report* resumes winter quarter, articles will be due to Public Affairs by 10 a.m. Wednesdays — one week before you'd like them to appear.

Items can be e-mailed to polynews@polymail, faxed to ext. 6-6533, or mailed to Public Affairs in Heron Hall.

For more information, call Public Affairs at ext. 6-1511. □

Ed Jorgensen, 85

Edward James Jorgensen, retired coach, physical education professor and Cal Poly Athletic Hall of Fame member, died Nov. 8 at his home in San Luis Obispo after a long illness.

Jorgensen's Cal Poly career spanned nearly 30 years, from 1947 to 1976. He coached the men's basketball team from 1947 to 1966 and the men's tennis team from 1956 to 1976. He was the second-winningest coach in Cal Poly basketball history.

He also taught in the Physical Education Department for 29 years.

In 1993 he was inducted into the Cal Poly Athletics Hall of Fame in recognition of his coaching career. He was inducted into the Chico State Hall of Fame in 1987 — the first year it was established — for his athletic abilities in football, basketball and track. □

ADVANCEMENT

College of Agriculture receives software gift

SST Development Group of Stillwater, Okla., with the cooperation of Helena Chemical Co. and CASE Corp., has donated software to the College of Agriculture's geographic information system (GIS) laboratories.

The software, intended for all areas of agricultural management, including crops, animals and forestry, is produced by SST.

The program being installed is the SSTtoolbox, designed to provide crop consultants, farm suppliers and producers with a means to manage precision farming technologies.

SSTtoolbox is a comprehensive agricultural GIS that incorporates a user-friendly, point-and-click interface with a powerful spatial data analysis and management system.

The SST software is currently being used for the management of crops by university researchers and instructors, crop consultants, fertilizer dealers, farm managers and agronomists in 33 states, 11 other countries and eight Canadian provinces.

The GIS labs, used by several departments, were developed with resources provided by the College of Agriculture and its departments and the private sector, including Dell Computers, which donated 25 ELSA Gloria Video Cards for three-dimensional rendering. □

It's officially now Aerospace Engineering

The Aeronautical Engineering Department has a new name: Aerospace Engineering Department. □

OK to turn in United Way forms late

While the official wrap-up of the California State Employees/United Way Campaign is today, any department pledge-drive captains and individuals who still have pledge forms may turn them in whenever they're completed.

Forms should be returned to Public Affairs by campus mail or in person to Heron Hall 207 or 203. Foundation employees should return forms to Foundation Human Resources.

The campaign allows staff and faculty members to give through payroll deduction to any non-profit organization.

For information or more forms, state and ASI employees should call Public Affairs at ext. 6-1511. Foundation employees should call Kim Miller at ext. 6-1122. □

... CFA

Continued from page 1
cover the costs of contract bargaining related to salaries, working conditions and employee rights.

All Unit 3 members (faculty members, librarians, coaches and counselors) are invited to meet Meisenhelder at the following events:

11 a.m.-1 p.m. - Lecturer's Luncheon.
1:30-3 p.m. - General Faculty Meeting.
6-8:30 p.m. - CFA Dinner.

All events will be in the Smith Alumni and Conference Center. To help plan for the lunch and dinner, Unit 3 members who expect to attend either event are asked to let Phil Fetzer, CFA chapter president, know. Please e-mail him at pfetzer@calpoly.edu or call him at ext. 6-6147 for reservations or more information. □

EAP to sponsor 'Lunch at the Movies'

At the next Employee Assistance Program (EAP) event Dec. 1, faculty and staff members and their families are invited to see a cartoon, have some free popcorn, enter a door-prize contest, and watch a 39-minute educational movie titled "The Business of Paradigms: How Perceptions Limit Our Ability to Solve Problems and Find New Solutions."

The hour-long program, "Lunch at the Movies," is at noon in the Veranda Café. Participants can either bring their own lunch or buy one.

For more information, call EAP at ext. 6-0-EAP (0327). □

Dec. 7 reception set for LaBarbera

Jeanne LaBarbera, ASI fine arts curator and employee for 15 years, will be leaving Cal Poly to focus on teaching, writing and pursuing her post-doctoral research interests.

The campus community is invited to a farewell reception in her honor 3-5 p.m. Dec. 7 in Club 221 (UU 221). □

Logging team to sell Christmas trees

The Cal Poly Logging Team will sell fresh-cut, high-quality Christmas trees at the campus Logging Unit from Friday (Nov. 26) through the December holidays.

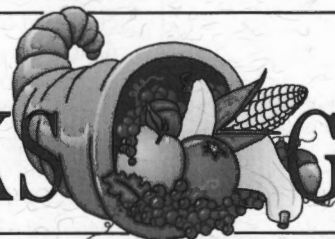
The 6- to 14-foot Scotch pines and Douglas firs range from \$5 to \$8 per foot.

The Logging Unit, at the junction of Stenner Creek Road and Mt. Bishop Road just off Highway 1, is open weekends 9 a.m.-5 p.m. and weekday afternoons from about 4 to 6 p.m.

Call the Natural Resources Management Department at ext. 6-2702 to confirm hours of operation and availability of trees. □

HAPPY

THANKS



GIVING!

Winter Craft Fair begins Tuesday

Cal Poly's Winter Craft Fair featuring one-of-a-kind crafts and gifts by local artists and students will run 9 a.m.-4 p.m., Tuesday (Nov. 30) through Dec. 2 in the UU Craft Center.

The fair is hosted by the ASI Craft Center. For more information call ext. 6-1266. □

Chamber Orchestra to play Mozart, Beethoven

The Cal Poly Chamber Orchestra will play music by Wolfgang Amadeus Mozart, Gabriel Fauré, Paul Creston, and Ludwig van Beethoven at its Fall Concert at 8 p.m. Dec. 3 in the Theatre.

Music Department faculty member Frederick Lau will conduct the group in Mozart's Overture to "La Clemenza di Tito," Fauré's "Pavane," Creston's Concertino for Marimba and Orchestra, and Beethoven's Symphony No. 7 in A major.

Student Erin Folchi will be the marimba soloist on the Creston piece. Tickets are \$8 and \$5.

The concert is sponsored by the Music Department, College of Liberal Arts, and Instructionally Related Activities program.

For more information, call the Music Department at ext. 6-2406. □

Student employee nominations due

It's time to nominate a student employee for Cal Poly's Outstanding Student Employee of the Year award.

Every year the National Student Employment Association invites campuses throughout the country to recognize student employees. State, A.S.I., Foundation, Federal Work-Study and other student assistants who have worked or are expected to work at least six months between June 1, 1999, and May 31, 2000, are eligible.

For a nomination form, call Luann McDonald, Financial Aid, ext. 6-5885, or Joan Ganous, Career Services, ext. 6-5970, or e-mail mcdonal@jganous.

Completed nomination forms are due to McDonald by Feb. 1. □



Keb' Mo' will bring the blues to the PAC.

Songwriter Keb' Mo' to sing blues Dec. 7

Award-winning bluesman Keb' Mo', often referred to as the greatest all-around blues musician working today, will appear in a solo acoustic concert at 8 p.m. Dec. 7 in Harman Hall in the Performing Arts Center's Cohan Center.

Mo', also known as Kevin Moore, is said to have the "nuanced, expressive croon of a soul singer and the raw power to belt out the blues."

Critics have hailed his ability to "move effortlessly between rhythm and blues and Delta blues styles, stopping along the way at a swinging, upbeat sound that's all his own."

While old-school blues are a part of his roots, Guitar Player magazine said, "Mo' has proven masterful at incorporating contemporary ... elements into his music."

Mo' won his second Grammy for Best Contemporary Blues Album in 1999, and at the W.C. Handy Blues Awards in Memphis, Tenn., in 1999, he was voted Contemporary Blues Male Artist of the Year and Acoustic Blues Artist of the year.

His music can be heard on the sound-tracks to such movies as "Tin Cup," "One Fine Day" and "Madeline."

Mo' was commissioned by the Yale Repertory Theater to score Keith Glover's "blues play," "Thunder Knocking on the Door."

He has toured with such greats as Bonnie Raitt and Santana, and his songs have been recorded by legends Joe Cocker and B.B. King.

Tickets to this Cal Poly Arts event cost \$12-\$28. □

Cal Poly Choirs to give holiday concerts Dec. 4-5

The Cal Poly Choirs will ring in the holidays with concerts Dec. 4-5 in Harman Hall in the Performing Arts Center's Cohan Center.

"A Christmas Celebration" will be at 8 p.m. Dec. 4 and 3 p.m. Dec. 5.

Conducted by music Professor Thomas Davies and accompanied by Susan Azaret Davies, also a member of the Music Department faculty, the concerts will feature performances by the university's 36-member mixed choir, PolyPhonics, and the University Singers, Cal Poly's largest mixed choir.

The Cal Poly Vocal Jazz group and Cal Poly's barbershop quartets, Here Comes Treble and Grand Avenue, will also appear.

PolyPhonics will perform works old and new, including Tomás Luis de Victoria's "O Magnum Mysterium" and a premiere performance of "O Come, O Come Emmanuel" as arranged and conducted by student Sam Estes.

The University Singers, Cal Poly Vocal Jazz and the barbershop quartets will sing favorite carols.

The combined choirs will conclude the program with the annual tradition of Malcolm Sargent's arrangement of "Silent Night."

Tickets are \$5-\$10 for children and students, \$7-\$13 for senior citizens, and \$9-\$16 for the public.

The concerts are sponsored by the Music Department, College of Liberal Arts, and the Instructionally Related Activities program.

For details, call the Cal Poly Choral Operations Office at ext. 6-6683. □

Ticket information

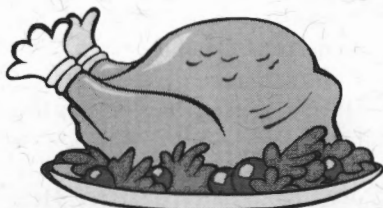
Tickets to the performances listed in today's *Cal Poly Report* are on sale at the Performing Arts Ticket Office 10 a.m.-6 p.m. weekdays and 10 a.m.-4 p.m. Saturdays. Call ext. 6-2787, or fax your order to ext. 6-6088.

Information on Cal Poly Arts events, including audio and video samples of artists' work, can be found on the Web at www.calpoly.arts.org. □

Workload cancels holiday lunch for '99

Because of unusually heavy staff workloads and time constraints, the annual holiday luncheon sponsored by Administration and Finance will not be held this year.

The lunch and show are expected to return for the 2000 holiday season. □



Campus Dining's holiday hours of operation

Wednesday, Nov. 24

| | |
|----------------|------------------|
| Julian's | 7:30 a.m.-2 p.m. |
| Vista Grande | 11 a.m.-2 p.m. |
| Campus Market | 8 a.m.-3 p.m. |
| Vending Cellar | always open |

Thursday, Nov. 25 (Thanksgiving Day)

| | |
|----------------|----------------|
| Vista Grande | 10 a.m.-5 p.m. |
| Vending Cellar | always open |

Friday & Saturday, Nov. 26-27

| | |
|----------------|-------------|
| Vending Cellar | always open |
|----------------|-------------|

Sunday, Nov. 28

| | |
|----------------------|------------------|
| Light House (Dinner) | 4:30 p.m.-7 p.m. |
| Vista Grande | 10 a.m.-2 p.m. |
| Campus Market | 10 a.m.-10 p.m. |
| Vending Cellar | always open □ |

Solicitation of sick leave, vacation

Diane Symmes, a custodian in Housing Services, has qualified for catastrophic leave. Employees may donate vacation credit and sick leave to help her remain in full-pay status during an extended absence.

Those interested in donating leave may request the Catastrophic Leave Donation form from solicitation coordinator Elizabeth Manriquez in Housing Services by phone at ext. 6-1588 or by e-mail.

CSEA employees (Units 2, 5, 7 and 9 only) may donate up to 32 hours total leave; all other state employees may donate up to 16 hours total per fiscal year in increments of one hour or more. □



The free-wheeling Cal Poly Wheelmen soared – and scored – in two recent competitions, as Brian Long demonstrates.

Wheelmen 1st in regional, 4th in national contest

The Cal Poly Wheelmen cycling club took fourth place overall in the National Collegiate Mountain Bike Championship Nov. 13-14, just one week after the club's first-place win against 20 West Coast teams in the regional conference championships.

Ten students traveled to the nationals in Helen, Ga., to compete with teams from more than 60 colleges and universities.

Cal Poly nutrition junior Danny Minx raced against approximately 100 riders and finished sixth in the downhill event.

Scott Gordon, a business administration senior, and Lisse Daugaard-Hansen, physical education and kinesiology senior, finished in the top

20 in the cross-country race, an event that drew about 150 men and 80 women competitors.

Aeronautical engineering senior Tiffany Allmandinger took seventh in the downhill event, and environmental engineering senior Nicole Henkels placed 11th. They competed against approximately 70 downhill riders.

At the regional conference championships, Minx won first place in the dual slalom and downhill races. Gordon took second in cross-country and garnered more points than any other competitor, earning him first place in the overall ranking. Henkels placed fourth in cross-country with Daugaard-Hansen in sixth. Allmandinger placed fourth in downhill. □

1999-2000 Universitywide Standing Committees

* Chair

Interim Chair

^ Co-chair

Administrative Advisory Committee on Computing

Euel W. Kennedy*
John Anderson#
Navjit Brar
Rick Ramirez
Rosemary Bowker
Robert Dignan
Anna McDonald
Dave Ross
Armando Pezo-Silva
Karen Stubberfield
Nick Giacona
Terry Ott
Jennifer Redman
Holly Sletteland
Jim Wolff
Joe Risser

Art Acquisition Committee

Vacancy - director, University
Art Gallery
Harry Hellenbrand
Chuck Jennings
Jeanne LaBarbera
Irene Hoffman
Robert Kitamura
Matt Staley
Robert Griffin
Cary Bowdich
Allan Cooper*
Crissa Hewitt

Athletics Governing Board

Paul Zingg*
Kevin Clark#
Michael Colvin
Johanna Brown
Tiffany Miller
Jean Garascia
Darren Cordova
Frank Lebens
Juan González
John Moffatt
Michael Wenzl
John McCutcheon
Kimi Ikeda
Debby Morris
Colette Frayne will serve fall and winter quarters.

Campus Dining Advisory Committee

Vacancies - Two campus resident students, nominated by the president of the Interhall Council. Elected in mid-October, Jake Brown (IHC president) will act as the representative until the election. Nancy Williams*
Marina Perez

Dallis Day
Madoka Dawson
Ken Barclay
Jonathan Loper
Nathan Chapel

Campus Fee Advisory Committee

John Moffatt*
Matt Staley
Jean Garascia
Aron DeFerrari
Jeff Gill
Jacquie Paulsen
Frank Lebens
Karen Webb
Denise Campbell
Kimi Ikeda

Campus Planning Committee

Warren Baker*
Paul Zingg
William Boldt
Juan González
Mark Shelton
Martin Harms
Frank Lebens
Victor Montgomery
Robert Kitamura
Sharon Okashima
Alice Loh
Steve Marx
Ed Naretto
John Moffatt
Arnold Jonas
Mike Ryan
Dale Sutliff

Campus Safety and Risk Management Committee

Vacancy - State Employees Trade Council (Unit 6) representative, nominated by the Unit 6 steward
Vicki Stover*
Joseph Risser
Ray Berrett
Ed Naretto
Norman Brooks Smith
Sharon Baldwin
Jim Zetzsche
Roy Haynes
Delores Estrada
Kristina Peña
Joe Baranek
Mike Ahler
Susan Opava
Pat Hosegood Martin
Matt Seals
Bill Ashby
Carole Schaffer
Rojean Dominguez
Richard Cavaletto
John Marlier
Nancy Vilkitis

Commencement Committee

Vacancy - faculty member from the College of Business, nominated by the college dean after consultation with the Academic Senate College Caucus
Ken Barclay*
Anne-Marie Devine
Jeff Pomo
Ed Seim
David Brodie
Hal Cota
John Thompson
Sonja Glassmeyer
Denise Campbell

Coordinating Committee on AIDS and HIV Infection

Vacancies - A representative from Facilities Services, nominated by the vice president for administration and finance, and a representative from Student Affairs, nominated by the vice president for student affairs
Burt Cochran*
Rojean Dominguez
Kate McBurney
David Ragsdale
Chris Parker-Kennedy
Stephan Lamb
Susanne Kelley
Marty Bragg
Suzanne Fritz
Katie (Muhly) Dolezal
Jason Wells
Lynda Alamo
Bahareh Sarhangi
Jennifer Frietas
Gwen Chavarria
Barbara Cook
Christine Cobb
Mike Voth

Disabled Students Advisory Committee

Vacancies - Student representative, nominated by the current president of the ASI Disabled Students Unlimited; an administrator/staff member, nominated by the director of Health and Psychological Services; and an administrator/staff member, nominated by the director of the Disability Resource Center
Linda Elenchman
Paul Wolff
Addie Rich
Suzanne Ruble
Luann McDonald
Marylud Ealdwin
Laura Freberg
Carolyn Jones
Mary Lou Brady

Ellen Polinsky
Vacant
Rex Wolf
Shelley Aleshire
William Bailey

Educational Equity Commission
Committee being restructured; currently inactive for 1999-2000

El Corral Advisory Committee

Frank Cawley*
Carol Montgomery
Jay Devore
Jerome Breitenbach
Harriett Ross
Irene Hoffman
Stephanie Xavier
Jeff Pomo
Matt Staley
John Mailler

Equal Opportunity Advisory Council

Committee being restructured; currently inactive for 1999-2000

Extended University Programs and Services Advisory Committee
Inactive for 1999-2000

Graduate Studies Committee

Susan Opava*
Lynn Gamble
Mark Shelton
Jens Pohl
David Dubbink
Allan Cooper
Earl Keller
Jay Noel
Tony Randazzo
Don White
Dan Biezd
Jim Beug
Donley Winger
Nirupam Pal
Sema Alptekin
Bob Heidersbach
Saeed Niku
Charles Burt
John Battenburg
Michael Selby
Dennis Frey
Myron Hood
Kellie Hall
David Duran
Susan McBride
Rita King
Ken Palmer
H.B. Strickmeier
Patricia Davidman
Matt Ceppi
Elizabeth Brunner
Steve Kane

Continued on page 6

... Standing Committees

Continued from page 5

Information Competence Committee

Vacancy - faculty member from the College of Science and Mathematics, nominated by the college dean after consultation with the Academic Senate College Caucus
Bob Clover
Del Dingus
Gary Clay
Kenneth Griggs
Chuck Dana
Colleen O'Neill
Paul Adalian
Elaine Chin
Doug Smith
David Conn
Ann Fryer
Judy Swanson
Peggy Lant*
Terry Ott

Information Resource Management Policy and Planning Committee

Paul Zingg
Jerry Hanley*
Frank Lebens
Juan González
William Boldt (Rick Ellison will serve as Dr. Boldt's designee)
Hiram Davis
Euel Kennedy
Joe Grimes
Harry Hellenbrand
Al Amaral
Walt Bremer
Doug Smith
Larry Gorman
Terry Ott

Institutional Animal Care and Use Committee

Mary Pedersen*
Dale Smith
Dennis Frey
Jon Beckett
George Beardsley
Steven Jefferson
David Ragsdale
Andrew Thulin

Instructional Advisory Committee on Computing

Joe Grimes*
Rollin Strohman
Thomas Fowler
James Sena
Dan Biezad
Doug Smith
Nilgun Sungar
Patrick Sullivan
Rebecca Wentzel
Jennifer Myers
Jim Borland

Michael Sher
John Anderson
Kimi Ikeda

Instructionally Related Activities Advisory Committee

David Conn*
Joann Trew
Stephan Lamb
Douglas Keeseey
John Moffatt

Landscape Advisory Committee

Lee Parker
Dirk Walters
Dale Sutliff*
Astrid Reeves
David Hanning
Steven Angley
John Harris
James Vilkitis
Ed Naretto
Doug Overman
Joel Shirbroun

Liberal Studies Committee

Robert Cichowski*
Patricia Davidman
Linda Patton
Robin Ward
William Martinez
Crissa Hewitt
Barbara Mori
Matt Staley
Mike Sutliff

Radiation Safety Committee

Steve Sherman
Robert Lang
Jim McLaughlin*
John Goers
Burt Cochran, MD
David Ragsdale

Registration and Scheduling Committee

Shelly Aleshire
Joe Glass
Ellen Notermann
Terri Swartz
Terrance Winebrenner
Stacey Breitenbach
Archie Waterbury*
Robert Dignan
Susan (Somppi) Sparling
John Mailler
Sam Aborne
Jay Devore
Euel Kennedy
Tom Zuur
Debbie Arseneau
George Glaser

Resource Use Committee

Doug Cerf
Bill Hendricks

John Dobson
Alan Pepe
Linda Lee Thoresen
Ed Johnson
Alan Cushman
John Moffatt
Jean Garascia
Jennifer Redman
Ed Naretto (acting chair)

Status of Women Committee

Vacancies - a representative of the Equal Opportunity Advisory Council, nominated by the chair of the Equal Opportunity Advisory Council and a representative of the Educational Equity Commission, nominated by the chair of the Educational Equity Commission. Both committees are inactive for 1999-2000.

Lynn Hamilton
Pamalee Brady
Patricia McQuaid
Mei-Ling Liu
Carolyn Stefano*
Nilgun Sungar
Jana Favallora
Marsha Epstein
Rachel Raymond
Denise Campbell
Anna McDonald
Andry Gonzalez
Susanne Kelley
Diane Long

Student Affairs Council

Vacancy - Student Health Advisory Council student representative, nominated by the director, Health and Psychological Services
Juan González*
Terri (Chedester) Garrett
John Moffatt
Ryan Bertaeo
Carrie Loarie
Abhay Maniar
Allen Victor
Salley Lord
Rob Whelan
Renee Cromer
Devin Nelson
Jeremy Ritter
Paul Werner
Jake Brown
David Conn
Barbara Melvin
Mark Berrio
Harapanahalli Mallareddy
Carolyn Jones
Robert Griffin

Substance Use and Abuse Advisory Committee

Daniel Howard-Greene*
Richard Thomas

Martin Bragg
John McCutcheon
Preston Allen
Kenneth Barclay
David Duran
Vicki Stover
Bob Pahlow
Jim Aiken
John Robison
Carolyn Jones
Pat Hosegood Martin
John Moffatt
Kathryn Songco
Joan Lund
Paul Hyman
Mary Peracca
Rob Bryn

Summer Advising Program Committee

Dave Wehner^
Ellen Notermann^
Jere Ramsey
Stacey Breitenbach
Wendy Spradlin
Cindy Jelinek
Susan (Somppi) Sparling
Janet Rizzoli
Rich Reddick
Albert Nunez, Jr.
Andrene Kaiwi-Lenting^
Jake Parnell

University Committee on Committees

Vacancy - Non voting secretary, nominated by the president. NB: The president elected to have the executive assistant to the president act as secretary
Warren J. Baker*
Paul Zingg
Juan González
John Moffatt
Myron Hood
Daniel Howard-Greene
Susan Bethel

University Planning and Budget Advisory Committee

Paul Zingg*
Juan González
Frank Lebens
Jerry Hanley
Myron Hood
Steve Kaminaka
Sema Alptekin
John Moffatt
Jean Garascia
John Howard
Beth Kaminaka
Joseph Jen
Phil Bailey □

... DATELINE

Continued from page 1

Wednesday, December 1 (continued)

Lunch at the Movies: "The Business of Paradigms: How Perceptions Limit Our Ability to Solve Problems and Find New Solutions," Veranda Café, noon.

Thursday, December 2

Winter Craft Fair: Handmade crafts by local artists and students. Craft Center, 9 a.m.

Music: Student recital, Davidson Music Building 218, 11 a.m.

What Else We Do: Kevin Clark (English), "Building Rooms of Their Own," Science North 206, 11 a.m.

Physics Colloquium: Peter Zimmerman (U.S. State Department), "Physics of Ballistic Missile Defense," Science E-45, 11 a.m.

Friday, December 3

Last day of classes

Music: Cal Poly Chamber Orchestra Fall Concert, Cal Poly Theatre, 8 p.m. (\$)

Saturday, December 4

Men's Basketball: CSU Northridge, Mott Gym, 7 p.m. (\$)

Music: Cal Poly Choirs' "A Christmas Celebration," Harman Hall, 8 p.m. Also Sunday, Dec. 5. (\$)

Sunday, December 5

Music: Cal Poly Choirs' "A Christmas Celebration," Harman Hall, 3 p.m. (\$)

Monday, December 6

Final exam period. Through Friday, Dec. 10.

Tuesday, December 7

Music: Keb' Mo', Harman Hall, 8 p.m. (\$)

Saturday, December 11

Commencement: Colleges of Agriculture, Architecture and Environmental Design, and Liberal Arts 9:30 a.m.; colleges of Business, Engineering, and Science and Mathematics, plus UCTE and Statewide Nursing Program, 1:30 p.m., Rec Center.

Women's Basketball: Mott Gym, 7 p.m. (\$)

Tuesday, December 14

Academic holiday: Quarter break through Sunday, Jan. 2

Men's Basketball: Menlo, Mott Gym, 7 p.m. (\$) □

Position vacancies

Below are all the new, previously unadvertised employment openings at the university. You may access full information about these and other previously advertised positions at www.afd.calpoly.edu/hree/cobcob/categories.htm.

STATE (Adm. 110, ext. 6-2236 or job line at ext. 6-1533). Official application forms must be received by 4 p.m. on the closing date or be postmarked by the closing date. (No faxed/e-mailed applications or resumes accepted.) For positions marked with an asterisk, qualified on-campus applicants currently in Bargaining Units 2, 5, 7 and 9 will be given first consideration.

#09073: Assistant Director Sports Information (Public Affairs Assistant I), (Unit 9),* Athletics. Closing Dec. 8. \$2,593-\$3,098/month. Must be able to work evenings, weekends, and travel out of town. Under general supervision, the incumbent will assist in providing the full range of sports information services in support of Athletics Department activities.

#07074: Administrative Support Assistant I (Unit 7),* Student Affairs-Career Services. Closing Dec. 8. \$1,794-\$2,315/month. The position provides receptionist and general clerical assistance in support of the day-to-day operation of Career Services events, programs, and staff.

#06075: Carpenter II, Admin. & Finance-Facility Services. Closing Dec. 8. \$3,765-\$4,614/month. Must be able to work overtime, flexible hours, and emergency call-back as needed. This position provides leadership and technical expertise in a broad range of carpentry and building maintenance for a residential community of almost 2,800 students.

#05076: Agricultural Housing Lead Custodian (Lead Custodian), (Unit 5),* Student Affairs - Housing Services. Closing Dec. 8. \$2,058-\$2,433/month. Work Thursday through Monday; emergency call-back as needed. The successful candidate must pass a pre-employment background fingerprint check. This position shares in the supervision, lead, and service responsibilities of a comprehensive cleaning and environmental services program.

#07077: Administrative Support Assistant II (Unit 7),* College of Liberal Arts-English Department. Closing Dec. 8. \$2,152-\$2,689/month. Candidates

selected for interview should be prepared to bring a writing sample that shows the ability to compose and the knowledge of correct spelling and grammar. This position provides clerical support for the faculty, chair, and others in a large academic department.

#07078: Administrative Support Assistant II (Unit 7),* College of Liberal Arts-Dean's Office. Closing Dec. 8. \$2,152-\$2,689/month. This position will provide the full range of office support functions for the dean and associate dean of the College of Liberal Arts. Candidates will be required to provide a writing composition sample at the time of interview.

#07079: Administrative Support Assistant I (Unit 7),* Extended Education. Closing Dec. 8. \$10.35-\$13.36/hour. Several intermittent/on-call hourly positions, temporary to Dec. 1, 2000. Possible renewal dependent on funds. These positions will provide general office support to Extended Education. The incumbents will also interact extensively with the public and Cal Poly Extended Education staff to assist educational programs.

#07080: Records Specialist (Administrative Support Assistant II), (Unit 7),* University Advancement. Closing Dec. 8. \$2,152-\$2,689/month. This position is responsible for the day-to-day maintenance of constituent records including biographical and gift information and provides other information management support services to unit advancement programs as needed. Requires long-term computer screen viewing and hours of keyboarding.

#05081: Custodian (Unit 5),* Student Affairs - Housing and Residential Life. Closing Dec. 8, Internal Recruitment - only persons presently employed on campus may apply. \$1,910-\$2,254/month. The successful candidate(s) must pass a pre-employment background fingerprint check. This position is to provide general cleaning and upkeep of residence halls for students and summer conference guests in 31 buildings, totaling 503,950 square feet of physical plant and housing 2,800 residents.

#07082: Administrative Support Coordinator I (Unit 7),* Administration & Finance, Risk Management. Closing Dec. 8. \$2,413-\$3,065/month. This position provides the full range of administrative/office support for the risk manager and the Environmental Health and Safety unit staff, and acts as assistant

Continued on page 8

... Position vacancies

Continued from page 7

claims coordinator. In addition, the incumbent provides general clerical and receptionist duties in support of the office of the vice president of administration and finance. This position requires a high level of tact and diplomacy, as the interpersonal contacts involve on- and off-campus personnel at varying levels.

#07083: Administrative Support Assistant II (Unit 7),* College of Liberal Arts – Social Sciences. Closing Dec. 8. \$1,973-2,465/month. (11/12 position with the month of July off each summer.) This position provides the full range of office, secretarial and academic support to faculty, staff and students.

FACULTY (Adm. 312, ext. 6-2844). Candidates are asked to contact the appropriate department office at the phone number listed for more information and an application. Please submit all application materials to the department head/chair unless otherwise specified. Rank and salary are commensurate with qualifications and experience, and timebase where applicable, unless otherwise stated.

#03020: Tenure-Track Position(s): Global Strategy & Law Area, College of Business (ext. 6-5068). Closing Dec. 5. Two tenure-track positions (second subject to funding) beginning September 2000. Appropriate doctoral-level training with primary teaching area in business policy/strategy, and secondary area in international management. Ph.D. required. Applicants must demonstrate strong teaching and research ability. Refer to recruitment code #03020 and send resume, doctoral transcripts, evidence of teaching experience, and three letters of recommendation to J. Michael Geringer, Global Strategy & Law Area, College of Business.

#03018: Full-Time Lecturer, Physical Education & Kinesiology (ext. 6-2545). Closing Dec. 15. Full-time position available for 2000-2001 academic year (salary \$33,792-\$46,488). Teach classes in biomechanics, advanced biomechanics, and professional activities. Supervise undergraduate field experiences and research. Requires M.S. in appropriate field; Ph.D. and college teaching preferred. To be considered, applicants must submit the following, referencing recruitment code #03018 on all correspondence: 1) completed faculty application form; 2) professional resume; 3) copies of official

transcripts from all colleges attended; and 4) three current letters of recommendation to Gerald DeMers, head, P.E. & Kinesiology Department (fax ext. 6-7273).

#03019: Department Head, Environmental Horticultural Science Department (ext. 6-2279). Closing April 1, 2000. Full-time 12-month tenure-track position to begin 2000-2001 academic year. Minimum qualifications include Ph.D. in horticulture or a related field; demonstrated administrative ability; past leadership activities; strong personnel management skills; substantial interaction with the environmental horticulture industry; ability to provide leadership in development of external funding support for the department; and demonstrated commitment to and involvement with the science and practice of environmental horticulture. Successful university teaching experience preferred. Evidence of scholarly activities to merit appointment to the rank of full professor is required. For position description or application, contact Mark Shelton at ext. 6-2161 or e-mail mshelton@calpoly.edu.

#03023: Tenure-Track Assistant Professor, Crop Science Department (ext. 6-1237). Closing April 1, 2000. Full-time position available Sept. 11, 2000, to teach lower- and upper-division courses in weed science. Duties include developing a research program for student projects, a weed control program that will provide practical experience for students, and establishing and conducting a department weed control program. Ph.D. in weed science or related area required. PCA and QAC license required. Proficiency in weed management methods for annual and perennial agroecosystems. Ability to operate farm machinery applicable to weed control. Apply to H. Paul Fountain, Crop Science Department.

#03016: Tenure-Track Assistant Professor, Art and Design Department (ext. 6-1149). Closing Jan. 17, 2000. Full-time position in graphic design and design history available September 2000. M.F.A. and university teaching experience required (minimum of three years' experience preferred). Candidates must have a strong record of recent professional achievement demonstrating creativity coupled with proven abilities in conceptual development, teaching, graphic design and new media. Knowledge of traditional and contemporary design history required. Refer to www.academic-personnel.cal

poly.edu for additional requirements and detailed application procedures.

FOUNDATION (Foundation Adm. Building, job line at ext. 6-7107). All Foundation applications must be received (not just postmarked) by 5 p.m. of the closing date. (No faxes.)

Accounts Payable Clerk, Foundation Business Office. Closing Dec. 3. \$9.50-\$12.35/hour. Responsible for performing tasks related to accounts payable activities. Requirements: high school or equivalent and one year experience in keeping or reviewing financial or statistical records in an accounting environment, including accounts payable. Accounts payable experience in a high volume environment is desired. Academic education beyond high school degree (or equivalent) may be substituted on basis of 12 semester units of business or commercial education being equivalent to six months of experience. Must type and operate a 10-key calculator by touch. Knowledge of and experience with computer terminals of data entry or word-processing required.

ASSOCIATED STUDENTS INC. is accepting applications for the following position(s). Complete position descriptions and applications are available at the ASI Business Office, University Union, Room 212, M-F, 8 a.m.-5 p.m., ext. 6-1281. All applications must be received by 5 p.m. of the listed closing date. AA/ED.

Building Service Worker. Closing Nov. 30. \$10.47-\$14.13/hour. Part-time (20 hours/week) with benefits. Under the supervision of the building services supervisor, performs custodial, set-up, and maintenance duties. Requires high school degree or equivalent; one year custodial experience in a large facility. □

Share a 'Piece of Mind'

"Piece of Mind" is for your letters about campus issues.

Questions, explanations, compliments, complaints — we want them all. Keep them brief, but keep them coming.

Please include your name, department, and phone number. E-mail them to polynews@polymail.

For more information, call Public Affairs at ext. 6-1511. □