

# CAL POLY Report

California Polytechnic State University  
San Luis Obispo, CA 93407  
Vol. 54, No. 8 • October 27, 1999

Published by Public Affairs • [www.calpoly.edu/~communic/CPR/report.htm](http://www.calpoly.edu/~communic/CPR/report.htm)

## DATELINE

(\$) – Admission charged

### Exhibits

**ASI Fine Arts Club 221** (formerly UU Galerie): "A Journey of the Warrior Spirit," through Dec. 10. Hours: Monday-Friday, 9 a.m.-9 p.m.; Saturday and Sunday, noon-4 p.m.

**University Art Gallery** (Dexter Building) Photos by Phil Borges, Nov. 1-Dec. 5. Talk: Nov. 7, 4 p.m., reception follows, 6-8 p.m. Hours: 11 a.m.-4 p.m. daily; Wednesday, 7-9 p.m.

### Wednesday, October 27

**Music:** Skillman, Backstage  
Pizza, noon.

**Speaker:** Edward Hasbrouck (author), International Travel Lunch-Time Talk, Veranda Café, noon.

### Thursday, October 28

**Biology-Physics Colloquium:** Geoffrey West (Los Alamos National Laboratory), "The Tree of Life: The Origin of Universal Scaling Laws in Biology From Molecules and Cells to Whales," Fisher Science 286, 11 a.m.

**Women's Soccer:** Cal State Bakersfield, Mustang Stadium, 7 p.m. (\$)

### Friday, October 29

**Homecoming:** Various activities through Oct. 31. Call ext. 6-2586 for details.

**Books at High Noon:** Jo Rubba (English), "Cold Mountain" by Charles Frazier, Veranda Café, noon.

**Mathematics Colloquium:** Carol Day (Thomas Aquinas College), "The Eccentric Circle of Claudius Ptolemy," Fisher Science 289, 4:10 p.m.

**Men's Soccer:** University of Washington, Mustang Stadium, 7 p.m. (\$)

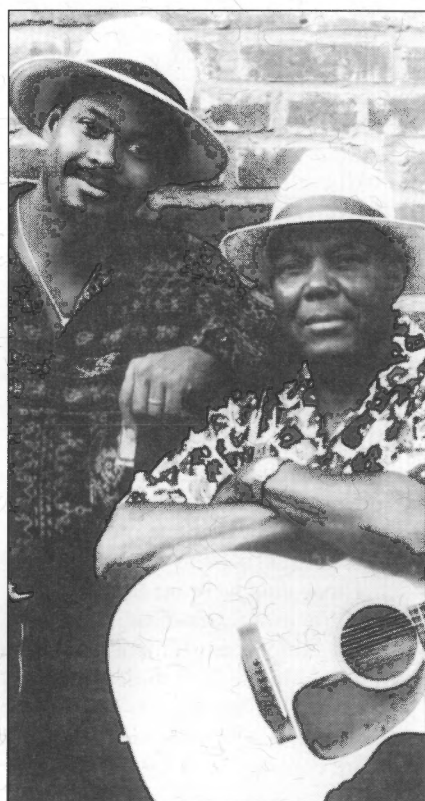
### Saturday, October 30

**Football:** Homecoming game vs. Portland State, Mustang Stadium, 2 p.m.

**Music:** Cal Poly Choirs Fall Concert with PolyPhonics and Cal Poly Vocal Jazz, the University Singers, First Baptist Church, San Luis Obispo, 8 p.m. (\$)

### Tuesday, November 2

**Speaker:** Christopher Yip (Architecture), "Tradition and the Question of Change in Bhutan," Veranda



*Masters of the steel-string guitar Cephas & Wiggins will play at the PAC (see page 3).*

## Only vacation credit can be donated to Ramos

Only vacation credits may be donated on behalf of Judy Ramos, administrative support coordinator in Academic Records, because her leave is for family illness.

Last week's *Cal Poly Report* solicitation article incorrectly stated that both vacation and sick leave credits could be donated.

To donate leave, contact Patty Warnick-Wait in Academic Records at ext. 6-2723 or by e-mail for the Catastrophic Leave Donation form.

New this year: CSEA employees (Units 2, 5, 7 and 9) may donate up to 32 hours total of sick leave and vacation credits per fiscal year in increments of one hour or more.

Other eligible state employees may donate up to 16 hours. □

## Baker, Zingg to talk on accreditation

President Baker and Provost Zingg will hold an open forum on the current reaccreditation process 11 am-noon today in UU 220.

A special session of the Academic Senate to address reaccreditation is also planned 3-5 p.m. Nov. 9 in UU 220.

Every nine years Cal Poly undergoes an accreditation review by the Western Association of Schools and Colleges (WASC). The next accreditation visit will be in March 2000.

Toward this end, several committees of faculty and staff members have been working on a Cal Poly Self-Study. The campus community is invited to review and comment on the Self-Study on line at <http://wasc.calpoly.edu/reports>. □

## Cal Poly Plan Steering Committee needs members

State, Foundation and ASI permanent and probationary staff members are invited to submit applications to fill two vacancies on the Cal Poly Plan Steering Committee.

The Appointment Committee, chaired by Anna McDonald, director of human resources and employment equity, will screen the applications and forward recommendations to President Baker.

Candidates are asked to submit a brief statement of interest, should have satisfactory performance evaluations, and need endorsement from their supervisor.

Anyone interested in serving should complete the form on page 6 in this edition of the *Cal Poly Report* and fax (ext. 6-5483) or deliver the application to Mikie Steineke in Human Resources and Employment Equity (Adm. 110) by Nov. 2.

For more information on the selection process, call Steineke at ext. 6-5427. □

## CFA president Meisenhelder to visit Cal Poly Nov. 5

Susan Meisenhelder, president of the California Faculty Association, will be on campus 10 a.m.-8:30 p.m. Nov. 3.

From 10 a.m. to noon she will meet with members of the Academic Senate and the Cal Poly Labor Council in UU 220.

The remainder of her schedule is:

- Noon-2 p.m. – Lecturers' Luncheon in the Veranda Café.

- 2:30-4 p.m. – General Faculty Meeting, UU 220.

- 6-8:30 p.m. – General Membership Dinner, Alumni House.

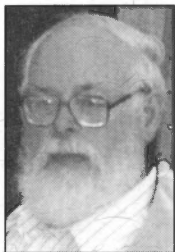
All Unit 3 members, including faculty members, counselors, librarians and coaches, are urged to attend the lunch or dinner.

For more information, contact Phil Fetzer, CFA chapter president, at ext. 6-6147 or by e-mail at <pfetzer@calpoly.edu>. □

## Memorial scholarship created for Don Floyd

A memorial scholarship has been named for Don Floyd, a retired social sciences professor and long-time supporter of the CSU's

International Programs who died earlier this year.



Don Floyd

In honor of his commitment to international education, his widow, Yvonne, has set up a scholarship fund in his name at Mid-State Bank for an International Programs applicant from Cal Poly.

Anyone wanting to contribute to the scholarship or needing more information should contact Marilyn York at ext. 6-5964 or <myork@calpoly.edu>. □

## CPR schedule change

Because campus will be closed on Veterans' Day, Nov. 11, and for Thanksgiving, Nov. 25-26, we've had to move up the deadlines to submit articles for two issues of the *Cal Poly Report*.

For the Nov. 17 *Cal Poly Report*, we need items by 10 a.m. Wednesday, Nov. 10, and for the Dec. 1 edition, by 10 a.m. Tuesday, Nov. 23. The e-mail address is <polynews@polymail>.

## PIECE OF MIND

### Offer priority enrollment and free parking and they will come

Dear Editor:

If this campus wants to get serious about increasing summer enrollment, it should offer a package-deal priority for summer/fall registration. Give first priority to students who want to sign up and pay for summer and fall classes. Then give them free parking in the summer. They will drive here in droves.

A. J. Schuermann  
Journalism Department

...

Harry Sharp, senior university associate dean, Extended University Programs and Services, responds:

Cal Poly's summer quarter enrollment peaked in 1990 when 6,464 students took an average of 9.8 units each. Beginning the next year the campus deliberately reduced summer offerings and enrollment as one important way of addressing the severe budget cuts. Those cuts were made by the Legislature as a result of the recession. By 1994 summer enrollment had fallen almost in half to 3,377 students taking, on average, only 8.6 units.

The president and his management team are committed to increasing the

enrollment of both new and continuing students in summer. The Deans' Enrollment Planning Advisory Committee (DEPAC), which I chair, is presently preparing recommendations on how that goal might be attained. We will be reporting to the provost in a couple of weeks.

We welcome suggestions from students, staff and faculty. They may be mailed to me at Extended Education or emailed to <hsharp@calpoly.edu>.

...

(Editor's Note: At this time, an offer of free parking is not possible. The CSU is directed by the Legislature to collect a fee for the use of campus parking facilities to reimburse the state for the costs of constructing and operating parking facilities.)

...

"Piece of Mind" is for your letters about campus issues. Questions, explanations, compliments, complaints — we want them all. Keep them brief, but keep them coming. Include name, department, and phone number. E-mail <polynews@polymail>, fax to ext. 6-6533 or mail to Public Affairs, Heron Hall. □

## Learning, teaching topic of next FIDO talk Oct. 28

Professors Dan Waldorf of the Industrial and Manufacturing Engineering Department and David Braun, Electrical Engineering, will present "New Century Scholars: Teaching, Learning, and Your Academic Career" noon-1 p.m. Oct. 28 in the San Luis Lounge in the UU.

Their talk will cover the highlights of a one-week National Science Foundation education workshop held at Stanford University last summer to help new engineering faculty members from around the country understand learning and teaching practices that support effective learning for all students.

Workshop participants learned to integrate pedagogical knowledge with other forms of scholarship while recognizing the multiple demands for faculty productivity.

Waldorf and Braun will explain how participants redesigned courses and instructional strategies, taking into consideration new information and research concerning teaching, learning styles, inclusive classroom learning, elements of effective lecturing, project-based learning, technology in teaching, time and stress management, developing a career strategy, and balance in personal and professional lives.

Although the NSF workshop was geared toward engineering professors, the content of much of the workshop is relevant to other faculty members, particularly those new to teaching.

The talk is sponsored by the Faculty Instructional Development Office. For more information, call Penny Ross at ext. 6-5935. □

## League of Women Voters honors two staff members

Rosemary Bowker, information technology consultant in the Biological Sciences Department, and Donna Davis, Career Services counselor, received the 1999 Mary Rhodes Awards from the San Luis Obispo League of Women Voters.

Bowker was honored for her community efforts and volunteer work in Los Osos, particularly for environmental causes.

Davis was selected for her educational outreach and mentoring activities.

The awards are given annually to a few community leaders who exemplify in their professional and community achievements the values of Mary Rhodes, first woman president of the California State Teachers Association and a founding member of the San Luis Obispo League of Women Voters. □

## Grants, other opportunities to be discussed Nov. 5

An orientation for new and tenure-track faculty members, "Internal/External Grant Programs and Other Professional Development Opportunities," will be held at noon Nov. 5 in Room 201 in the Business Building.

Box lunches will be provided. Those who plan to attend are asked to call the Research and Graduate Programs Office by Nov. 1 at ext. 6-1508, or e-mail <cbrooksh@calpoly.edu>. □

## Bhutan subject of talk

Architecture professor Christopher Yip will present "Tradition and the Question of Change in Bhutan" at noon Nov. 2 in the Veranda Café Conference Room.

Bhutan, roughly the size of Switzerland, sits on the southern slope of the Himalayan mountains. The majority population is of Tibetan origins and is the last surviving Buddhist theocratic state selectively introducing foreign technology while limiting the impact of foreign influences on its culture and religion.

Students as well as employees are invited to the talk, sponsored by International Education and Programs (IEP). Those attending can bring their own lunch or buy one at the Veranda Café.

For details, call IEP at ext. 6-1477. □



Johnny Bellar

## Men of STEEL Strings

### Steel string guitar featured in concert

"Some of the sweetest guitar playing this side of heaven ... as good as a musical performance can get."

That's how Impact News Magazine described Masters of the Steel String Guitar, a national concert tour that includes a stop at Cal Poly on Nov. 5.

Folk guitar virtuosos Eddie Pennington, Johnny Bellar, John Cephas and Wayne Henderson will play their own distinct styles at 8 p.m. in Harman Hall in the Performing Arts Center's Cohan Center.

Pennington is known as the grand master of "thumbpicking," an intricate technique made popular by Merle Travis and Chet Atkins.

Bellar plays the acoustic resonophonic guitar and its electric counterpart, the lap steel guitar.

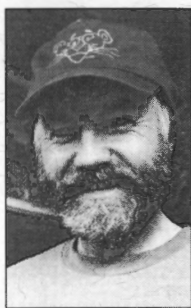
Cephas plays the Piedmont blues — the oldest form of the blues, with links dating back to the black string bands of Colonial America. Phil Wiggins, a world-class harmonica player, will perform with Cephas.

Appalachian guitarist Henderson uses a thumbpick and fingernails to achieve "amazing speed and fluidity, transforming fiddle and banjo pieces and even the occasional jazz standards into stunning guitar solos."

The group will also give a free workshop at 2 p.m. Nov. 5 in Room 218 in the Davidson Music Center.

Music professor Craig Russell will give a pre-concert lecture at 7 p.m. in Philips Recital Hall.

Tickets to this Cal Poly Arts event cost \$9 to \$24. □



Eddie Pennington, top, and Wayne Henderson, bottom.

## Ticket information

Tickets to the performances listed in today's *Cal Poly Report* are on sale at the Performing Arts Ticket Office 10 a.m.-6 p.m. weekdays and 10 a.m.-4 p.m. Saturdays. Call ext. 6-2787, or to order by fax, dial ext. 6-6088. □



## Correction

In last week's *Cal Poly Report* article announcing David Rackley's Telly award, he was credited as director of the Mustang Marching Band. Music professor William Johnson is director; Rackley is associate conductor.

Our apologies for the error. □

## Oct. 28 talk to explore size, life span link

A physicist from the Los Alamos National Laboratory will discuss theories that help explain why larger organisms live longer, in a joint Biology-Physics Colloquium 11 a.m.-noon Oct. 28.

Geoffrey West will present "The Tree of Life: The Origin of Universal Scaling Laws in Biology From Molecules and Cells to Whales" in Room 286 in Fisher Science Hall.

West, whose research recently appeared in the journal *Science*, will explain the "quarter-power scaling law," a principle that correlates size and length of life for both animals and plants.

While scientists can show the principle is true, they don't know why it is.

"If you could understand the origin of these scaling laws," West said, "you'd understand something about aging and death."

In an attempt to explain the phenomenon, West and his colleagues proposed that the correlation stems from the physical constraints of the systems that distribute nutrients, whether the body's blood vessels or the vascular network nourishing a plant.

In his talk, West will explain the group's theory that the principle is based mostly on geometry and the nature of circulatory networks in particular.

West's talk is sponsored by the Biological Sciences Department and Physics Department. For more information, call the Physics Department at ext. 6-2448. □

## Julian's to celebrate 'old-time Halloween'

Julian's in the University Union will celebrate an "old-time Halloween" on Friday with complimentary hot cider from 7:30 a.m. to noon and bobbing for apples from 1:30 to 2 p.m.

Anyone who comes in costume will get a special treat. □



## 'Vanishing' cultures focus of photo exhibit

Phil Borges, an award-winning photographer known for his riveting portraits of indigenous cultures, will give a free public talk at 4 p.m. Nov. 7 in the Rotunda (Room 213) of the Business Building.

Borges will speak about his exhibit, "Enduring Spirit," which will run Nov. 1-Dec. 5 in the University Art Gallery in the Dexter Building.

After his talk, the artist will be honored at a reception from 6 to 8 p.m. in the gallery.

Seattle-based Borges studies and photographs the vanishing cultures of the world. The "Enduring Spirit" exhibit features 50 photographs of endangered cultures and tribal people from Indonesia, Kenya, Ethiopia, Thailand, Peru and North America.

The Dalai Lama wrote the text to accompany Borges' photographs in the book "Tibetan Portrait: The Power of Compassion." The book provides a unique understanding of the Tibetan people and the Buddhist teaching of nonviolence.

Chilean author Isabel Allende wrote in the book's introduction, "In this beautiful book, Phil Borges celebrates, with his images and stories, life as it is lived and shared in so many places on our fragile and beautiful planet."

Information about Borges and images of his work can be found on line at <[www.philborges.com](http://www.philborges.com)>.

The University Art Gallery is open 11 a.m.-4 p.m. daily; Wednesday, 7-9 p.m.

For information, call ext. 6-1571. □

## 'School choice' advocate to talk at Nov. 4 symposium

Terry Moe, senior fellow at the Hoover Institution and one of the country's leading advocates of "school choice," will give the keynote address at an Education Policy Symposium 5-6:30 p.m. Nov. 4.

Moe will speak on "Alternative Approaches to Academic Excellence" in Philips Hall in the Performing Arts Center's Cohan Center.

After the talk, a panel of local educators will comment on the issues presented.

The panelists will be Julian Crocker, superintendent of the San Luis Obispo Office of Education; Ted Wheeler, a trustee of the San Luis Coastal Unified School District; and Karen Gallas, teacher and principal at Bellevue-Santa Fe School in the Avila Valley.

The book "Politics, Markets, and America's Schools," co-authored by Moe and John E. Chubb, is considered among the most influential and controversial works on education to be published in the last decade.

Moe, a professor of political science at Stanford University, is an expert on educational policy, U.S. political institutions and organizational theory. His current research projects deal with school choice, public bureaucracy and the presidency.

Moe has served as senior fellow at the Brookings Institution in Washington, D.C., and is an elected member of the American Academy of Arts and Sciences.

Refreshments will be served at 6:30 p.m. The symposium is sponsored by the University Center for Teacher Education and Political Science Department.

For more information, call Carol Barnes, director of advancement in the UCCE, at ext. 6-5934. □

## Central Coast chapter of IEEE to meet on campus

George Westrom, founder and executive director of the Future Scientists and Engineers of America organization, will present "Who Are the Engineers/Scientists/Technicians for the 21st Century?" at the Nov. 2 meeting of the Central Coast section of the Institute of Electrical and Electronics Engineers.

The meeting will be 7-8 p.m. in Room 206 in Engineering East. Refreshments will be available at about 6:30 p.m.

For details, call Ali Shaban in Electrical Engineering at ext. 6-2918. □



## Kathy Blackburn wins 'Name the Bug' contest

Kathy Blackburn of the Foundation's Campus Catering office submitted the winning entry for the "Name the Y2K Bug" contest held in conjunction with Y2K Day earlier this month.

"Raiders of the Lost Century," or "Raiders" for short, earned Blackburn a \$25 Campus Express gift certificate. "Raiders-alludes to the insecticide Raid. It's the Y2K bug. Get it? □

## Poet Boland to read works

Award-winning Irish poet Eavan Boland will read from her work at the first fall quarter WriterSpeak event at 7 p.m. Nov. 12 in Philips Hall in the Performing Arts Center's Cohan Center.

Boland will also be the keynote poet for the 16th annual San Luis Obispo Poetry Festival Nov. 12-21.

Boland has published several volumes of poetry, including her widely acclaimed American debut, "Outside History." She is also the author of "In a Time of Violence," "The Lost Land" and "Object Lessons."

The New York Review of Books said, "Boland has emerged as one of the best poets in Ireland."

Jan Garden Castro of The Nation states, "Boland combines impeccable craft, resilient metaphors and, above all, moral authority to witness human difficulties."

Boland's awards include a Lannan Foundation Award in Poetry and an American Ireland Fund Literary Award.

After the reading, "Outside History" and other Boland publications will be on sale in Philips Hall.

The WriterSpeak reading is sponsored by Cal Poly Arts, the College of Liberal Arts, the Lyceum speaker series, and the English Department.

For more information, call Adam Hill of the English Department at ext. 6-1622. □

## Send items by Nov. 1 for fall Credit Report

Nov. 1 is the deadline to submit items for the fall quarter edition of *The Credit Report*, the newsletter of faculty and staff professional accomplishments.

E-mail items to <polynews@polymail>, and please include a phone number in case we have questions.

For information, call ext. 6-1511. □



Former Bandfest trombonist James Gruver.

FILE PHOTO

## Bandfest '99 planned for Nov. 20 at PAC

Bandfest '99 will bring together 170 musicians in two university ensembles in a "wind instrument spectacular" set for 8 p.m. Nov. 20 in Harman Hall in the Performing Arts Center's Cohan Center.

The 80-member Cal Poly Wind Orchestra and the 90-member Mustang Band will play original tunes and toe-tapping popular arrangements in the 15th annual Bandfest concert.

Under the direction of music professor William Johnson, the Wind Orchestra will open the concert with two original works by James Curnow, "Rejouissance" and the "Praetorius Variations." The orchestra will also perform Symphony No. 6 for Wind Orchestra by Vincent Persichetti.

The Mustang Band, directed by David Rackley of the Music Department faculty, will perform popular arrangements that "will add a choreographed upbeat brilliance to the concert," Johnson said.

The Wind Orchestra and the Mustang Band together will close the con-

cert with "Africa, Ceremony, Song and Ritual" by Robert W. Smith and "Russian Christmas Music" by Alfred Reed.

The Wind Orchestra is an ensemble of just the woodwind, brass and percussion sections of a traditional orchestra.

Tickets cost \$7 to \$15.

Patrons who buy tickets to three or four Cal Poly Wind Orchestra and University Jazz Band season events will save 15 percent; those who buy tickets to five or more events will save 25 percent.

Season events to come include Bandfest '99, the Pops Concert Feb. 26, "Just Jazz" March 11, two Festival Concerts, April 15 and 16, Jazz Night May 13, and the Spring Concert June 3.

For a season brochure and more information, call the Music Department at ext. 6-2607.

Bandfest '99 is sponsored by the College of Liberal Arts, Music Department, and ASI. □

## Only standby seating left for Marine Band concert

All free tickets have been distributed to "The President's Own" U.S. Marine Band concert at 8 p.m. Nov. 9 in Harman Hall in the Performing Arts Center's Cohan Center.

Doors to the auditorium will open at 7 p.m., and all ticket holders need to be

seated by 7:45. At that time music fans who don't have tickets will be admitted to fill any unclaimed seats.

For more information, call Cal Poly Arts at ext. 6-6556. □

# Campus Standing Committees Staff Interest Survey and Application

*Please FAX (6-5483) or deliver the application to Human Resources and Employment Equity.*

Name: \_\_\_\_\_ Department: \_\_\_\_\_

Position: \_\_\_\_\_ Department Extension: \_\_\_\_\_

Supervisor: \_\_\_\_\_ Department/Division Head: \_\_\_\_\_

Status: ☐ State ☐ Foundation ☐ ASI

*Please indicate the Campus Standing Committee you are interested in serving on:*

☐ Cal Poly Plan Steering Committee

---

**Statement of Interest** (Please state your reasons for wanting to serve on the committee selected above and any applicable experience or background that may apply):

---

## Endorsements:

Supervisor's Signature: \_\_\_\_\_ Date: \_\_\_\_\_

Department/Division Head's Signature: \_\_\_\_\_ Date: \_\_\_\_\_

---

## For Review Committee Use Only

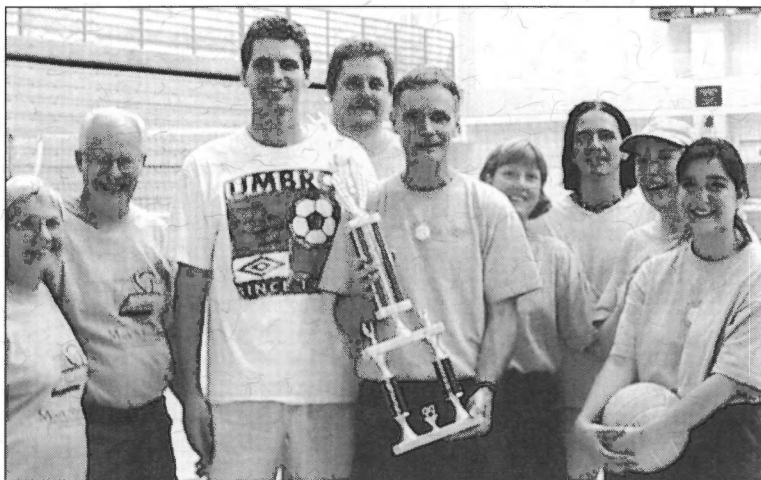
Date of Review: \_\_\_\_\_ Application Status: \_\_\_\_\_

Committee Assignment: \_\_\_\_\_ Staff Member Notified: \_\_\_\_\_

Committee Chair Signature: \_\_\_\_\_ Date: \_\_\_\_\_



## 'Mad Scientists' win volleyball tourney



From left: Pam and Ed Reuling (Mark S. Reuling's parents), Chance Hoellwarth, Derek Gragson, Dave Keeling, Peggy Rice, Rod Schoonover, Grace Ann Neff, and Theresa Bolanos. Hoellwarth is a member of the Physics Department; the others are from Chemistry and Biochemistry.

The Mad Scientists team from the Chemistry and Biochemistry and Physics departments won the championship in the staff and faculty category of the 2nd annual Mark S. Reuling Volleyball Challenge, held earlier this month.

Sigma Alpha Epsilon won the student division.

Other teams came from ASI Recreational Sports, the ASI Business Office, Career Services, Health and Counseling Services, Housing and Residential Life, the Office of the Vice President for Student Affairs, Statistics, Student Academic Services, Student Life, and the University Center for Teacher Education.

Team fees added to an endowment named in honor of former student Mark Reuling, who suffered from depression and committed suicide.

The tournament, coordinated by Rec Sports, is expected to expand in the future and continue to raise funds for education and training about mental illness and depression.

For more information on the endowment, call Marty Bragg, director, Health and Psychological Services, at ext. 6-5279. □

## Wilderness Medicine to be taught at Cal Poly

Those looking to develop the confidence and skills needed to handle backcountry emergencies should plan to attend the Wilderness First Responder training program to be offered at Cal Poly Dec. 11-20.

Taught by members of the Wilderness Medicine Institute of the National Outdoor Leadership School, the program is a nationally recognized, 80-hour course that trains participants to respond to emergencies in remote settings.

Attendees will learn how to monitor a patient, manage wounds and fight infection, realign fractures and dislocations, and improvise splinting techniques.

Long-term management problems, the latest information on environmental emergencies, and drug therapies will also be covered.

The curriculum includes standards for urban and extended-care situations, with an emphasis on prevention and decision-making.

Upon completion of the course, including a practical exam and a written exam, participants earn Wilderness First Responder certification and two-year American Red Cross Heartsaver CPR certification.

The course costs \$420 for students and \$475 for the public. For more information or to register, call the Poly Escapes Business Office at ext. 6-2743. □

## Position vacancies

Vacancy information and applications for the following positions are available from the appropriate Human Resources office. Information is also available on the Cal Poly home page (<[www.calpoly.edu](http://www.calpoly.edu)>; click on "General Information").

**STATE** (Adm. 110, ext. 6-2236 or job line at ext. 6-1533). Official application forms must be received by 4 p.m. on the closing date or be postmarked by the closing date. (No faxes, please.) For positions marked with an asterisk, qualified on-campus applicants currently in Bargaining Units 2, 5, 7 and 9 will be given first consideration.

**#07047: Billing Coordinator (Administrative Support Coordinator I) Information Technology Services-Communications and Computing Services (Unit 7).**\* Closing date: Nov. 10. Salary: \$2,413 - \$3,065/month. This position will independently coordinate the production and distribution of the campus telephone bills and monitor and analyze carrier bills and output reports; maintain circuit inventories and administrative reports.

**#07048: Administrative Support Assistant I, Administration & Finance-Facilities Planning (Unit 7).**\* Closing date: Nov. 10. Salary: \$897-\$1157.50/mo., temporary, half-time to June 30, 2000 with possible annual renewal to June 30, 2002; w/ benefits. This position serves as the office receptionist and provides general clerical support to the director and department staff. Must be willing to work additional/varied hours on occasion.

**#07051: Administrative Support Assistant I, Information Technology Services**

**(Unit 7).**\* Closing date: Nov. 10. Salary: \$1,345.50 - \$1,736.25/month, temporary, three-quarter time (30 hrs/wk) to June 30, 2000 with possible renewal dependent on funding. This position, under general supervision, will perform a variety of administrative support functions for the office of the vice provost/chief information officer.

**#07052 Administrative Support Coordinator I, Office of the Associate Vice President for University Advancement (Unit 7).**\* Closing date: Nov. 10. Salary: \$2,413 - \$3,065/month. This position will provide the full range of administrative support on a variety of complex projects for the associate vice president. In addition, the incumbent will oversee the functions of other office support staff under the vice president's jurisdiction.

**#07053: Administrative Support Assistant I, University Center for Teacher Education, Director's Office (Unit 7).**\* Closing date: Nov. 10. Salary: \$1,794 - \$2,315/month. This position will provide general office support to the director, faculty, staff and students in the University Center for Teacher Education.

**#07058: Administrative Support Assistant I College of Liberal Arts, Graphic Communication (Unit 7).**\* Closing date: Nov. 10. Salary: \$897 - \$1157.50/month, temporary, half time to June 30, 2000 with possible annual renewal, w/benefits. This position provides general clerical support to the department head, staff and faculty. For about six weeks in June and July (if assignment is renewed) the incumbent will provide office support exclusively to the College of Liberal Arts' Summer Advising Program

*Continued on page 8*



## ... Position vacancies

*Continued from page 7*

(SAP) at a different location. May be required to occasionally work additional/varied hours.

**#0M041: Director of Advancement (Administrator II), College of Architecture and Environmental Design.** Closing date: position is open until filled. For full consideration all application materials should be submitted by Oct. 13. Salary: \$45,000 - \$65,000 annual hiring range commensurate with qualifications and experience.

### READVERTISEMENT:

**#0M008: Nurse Practitioner, Head of Nursing Services (Administrator II), Student Affairs, Health & Psychological Services.** Closing date: position is open until filled. For full consideration application materials should be submitted by Nov 10. Salary: \$56,400 - \$72,000 annual hiring range dependent on qualifications and experience. The Health Services Department provides outpatient services and programs that address the health and medical needs

of students. The focus of this position is to provide full-range administrative leadership to the Nursing Services unit of Health Services.

**#0E033: Predoctoral Internship (Helper Aide) Health and Counseling Services.** Closing date: positions open until filled. Application review will begin Dec. 1. Salary: The annual compensation for full-time interns is \$15,000 (\$1,250/month) and includes employee benefits of vacation time, sick leave, and health insurance. The Cal Poly Health and Counseling Services Center is a member of the Association of Psychology Postdoctoral and Internship Centers (APPIC) and the Association of Counseling Center Training Agencies (ACCTA). Participants in the Cal Poly Predoctoral Internship Program receive two hours of individual supervision, a weekly case conference, seminars addressing professional specialized training in such topics as eating disorders, sexual abuse, trauma recovery, ethics and the law, multi-cultural counseling, stress management and organizational consultation. Additional training in the university's Employee Assistance Program is also available. The position: There are two temporary 12-month positions available beginning July 1, 2000. One position is in Counseling Services and one is in the Employee Assistance Program. These positions receive supervised clinical experience in individual and group therapy, crisis intervention, outreach, health psychology, consultation, and prevention education. Direct specific inquiries about the position to Elie Axelroth, training coordinator, Health and Counseling Services, at ext. 6-2511.

### FACULTY (Adm. 312, ext. 6-2844)

Candidates interested in faculty positions are asked to contact the appropriate department office at the phone number listed for more information and an application. Please submit all application

materials to the department head/chair unless otherwise specified. Rank and salary are commensurate with qualifications and experience, and timebase where applicable, unless otherwise stated.

**#03017: Visiting Lecturer, Global Strategy & Law Area, College Of Business (756-5068).** Closing date: Nov. 11. Visiting lecturer position available full-time for winter and spring quarters of the 1999-2000 academic year. Appropriate doctoral level training with primary teaching area in business policy/strategy, and secondary area in international management. Ph.D. preferred, but A.B.D. applicants may be considered. Applicants must demonstrate strong teaching ability. Apply to J. Michael Geringer, Global Strategy and Law Area, College of Business.

**#03018: Full-Time Lecturer, Physical Education & Kinesiology (756-2545)** Closing date: Dec. 15. Full-time position available for 2000-2001 academic year (salary \$33,792 - \$46,488). Teach classes in biomechanics, advanced biomechanics, and professional activities. Supervise undergraduate field experiences and research. Requires M.S. in appropriate field; Ph.D. and college teaching preferred. To be considered, applicants must submit the following (referencing recruitment code #03018 on all correspondence): 1) completed faculty application form; 2) professional resume; 3) copies of official transcripts from all colleges attended; and 4) three current letters of recommendation to Gerald DeMers, head, P.E. & Kinesiology Department (fax 756-7273).

**FOUNDATION (Foundation Adm. Building, job line at ext. 6-7107). All Foundation applications must be received (not just postmarked) by 5 p.m. of the closing date. (No faxes.)**

### READVERTISEMENT:

**Baker, Bake Shop, \$9.50 - \$12.35/hr.**

Requirements: high school degree or equivalent. Minimum of one year experience as a journey level baker, preferably in a large scale, variety bake shop. Must be able to bake from scratch, using ovens, mixers, dough shapers, fryers, measuring devices, common kitchen cutlery. Must develop and maintain successful working relationships, possess a valid California Driver's license and be able to lift and carry 50 lbs. Closing date: Position is open until filled; review of applications begins Nov. 5.

**ASSOCIATED STUDENTS INC. is accepting applications for the following position(s). Complete position descriptions and applications are available at the ASI Business Office, University Union, Room 212, M-F, 8 a.m. - 5 p.m., ext. 6-1281. All applications must be received by 5 pm of the listed closing date. AA/ED.**

**Information Technology Manager** Open until filled, review of applications will begin Nov. 1. Salary range: \$3,771 - \$5,145/month. Full-time. Responsible for maintenance, installation, and development of enterprise network utilizing Novell 4.11, Windows NT 4.0 and Unix. Manage Web server and its content; maintain archival storage and network security; develop and manage operational procedures and IT budget; supervise computer support staff. Requires B.S. in computer science, business, or related field; 3+ years' related experience. Complete position descriptions and applications available in ASI Business Office.

**Coordinator of Aquatics & Summer Programs, Recreational Sports.** Open until filled. Review of applications will begin Nov. 1. Salary range: \$3,102 - \$4,188/month, full-time. Under the supervision of the director of recreational sports, provides oversight and supervision for a staff of lifeguards and water safety instructors. Works directly with professional and student staff to develop and implement summer programs for children and aquatics programming for the campus community. Requires bachelor's degree, two years' progressively responsible student services work experience, and current applicable American Red Cross certification. Master's degree and two years' post master's degree work experience preferred.

**Coordinator of Fitness Programs, Recreational Sports.** Open until filled. Review of applications will begin Nov. 1. Salary range: \$3,420 - \$4,618/month, full-time. Under the supervision of the director of recreational sports, provides oversight and direct supervision of instructional programs, personal fitness, and exercise room management. Works directly with professional and student staff to plan and coordinate all fitness and instructional activities. Requires master's degree and two years' progressively responsible student services work experience; experience in supervising and instructing participants in a fitness environment; personal training certification or degree in kinesiology. Two years' post-master's degree work experience preferred. □

## Ride sharers credits to Express cards delayed

Commuter Services wants "registered" ride sharers to know that stipends to Campus Express cards for ridesharing in July, August and September will not be available until mid-November.

Ride sharers will be notified when cards are credited. □