

CAL POLY Report

California Polytechnic State University
San Luis Obispo, CA 93407
Vol. 54, No. 4 • September 29, 1999

Published by the Communications Office • www.calpoly.edu/~communic/CPR/report.htm

DATELINE

(\$) – Admission charged

Exhibits

ASI Fine Arts Club 221 (formerly UU Galerie): Ceramic art of student Guan Xiao (mechanical engineering), "A Journey of the Warrior Spirit," through Dec. 10. Reception 2 to 4 p.m. Oct. 16. Hours: Monday-Friday, 9 a.m. to 9 p.m.; Saturday and Sunday, noon to 4 p.m.

University Art Gallery (Dexter Building): Faculty Show, through Oct. 24. Hours: 11 a.m. to 4 p.m. daily; Wednesday, 7 to 9 p.m.

Wednesday, September 29

Men's Soccer: Cal State Fullerton, Mustang Stadium, 7 p.m. (\$)

Thursday, September 30

Physics Colloquium: Roger Townsend (Imperial College, University of London), "High Temperature Metallurgy in Power Plants," Science E-45, 11 a.m.

Computer Science Colloquium: Elmo Keller (Computer Science), "A Guide to Embedding the Linux Kernel," Dexter 227, 4:10 p.m.

Saturday, October 2

Football: Southern Utah, Mustang Stadium, 6 p.m. (\$)

Music: Music Department Faculty Recital, Mt. Carmel Lutheran Church, San Luis Obispo, 8 p.m. (\$)

Music: Jazz at Lincoln Center, Cohan Center, 8 p.m. (\$) Pre-concert lecture, Paul Rinzler (Music), Philips Hall, 7 p.m.

Sunday, October 3

Women's Soccer: San Jose State, Mustang Stadium, 1 p.m. (\$)

Men's Soccer: St. Mary's, Mustang Stadium, 4 p.m. (\$)

Thursday, October 7

Physics Colloquium: Warren Rogers (Westmont College), "Excited-State Nuclear Magnetic Moments," Science E-45, 11 a.m.

Volleyball: Idaho, Mott Gym, 7 p.m. (\$)

Women's Soccer: CSU Fullerton, Mustang Stadium, 7 p.m. (\$) □



Voted the Monterey Jazz Festival's Most Valuable Musician in 1977, string bassist David Friesen will present a jazz master class with guitarist Sid Jacobs Oct. 9 in the Davidson Music Center. (See story, page 5.)

Weeklong focus on environment planned

Faculty and staff members are needed to showcase their class and departmental efforts aimed at environmental issues during Facilities Planning's second annual Environmental Awareness Week Oct. 25-29.

Faculty members and student volunteers are also needed to participate in planning the event and future activities.

Last year students of English professor Melody DeMeritt worked on the "Cal Poly Environmental Guide" as a class project. The comprehensive guide was included in this year's WOW packet and is available from Ed Johnson in Facilities Planning.

Chemistry professor Theresa Torres involved students by giving extra credit for preparing and displaying environmental information during the week.

This year Facilities Planning hopes to increase faculty support and student awareness through class projects and event involvement.

Potential student projects might include designing a product from recycled

Continued on page 2

Two-year CSEA contract approved by CSU board

The CSU Board of Trustees has approved a two-year contract, effective from July 1, 1999, through June 30, 2001, with the California State Employees' Association for Unit 2, Health Care Support; Unit 5, Operations Support Services; Unit 7, Clerical/Administrative Support Services; and Unit 9, Technical Support Services.

Salary highlights for fiscal year 1999-2000 include:

- A 2.607 percent general salary increase effective July 1, 1999.

- A 1 percent service-based salary increase (SSI) for eligible employees on their 1999-2000 anniversary date, subject to an SSI maximum.

- Market salary adjustments of 1.98 percent effective July 1, 1999, for employees in the Administrative Support Series and the Administrative Analyst-Specialist classifications.

- Higher shift differential rates of \$1.25 and \$2.20 per hour for eligible employees who work four or more hours between 6 p.m. and midnight and between midnight and 6 a.m., respectively.

Continued on page 2

Y2K Awareness Day to be Oct. 14 in UU Plaza

To help the university community better prepare for possible computer-related problems that may be associated with the arrival of the year 2000 (Y2K), Cal Poly will sponsor Y2K Awareness Day Oct. 14.

The event will run from 11 a.m. to 1 p.m. in the UU Plaza. Departments from throughout Cal Poly and representatives from area organizations and businesses will have information available on how best to plan for and prevent possible computer troubles, travel concerns, business delays and other situations.

For information regarding Cal Poly and Y2K, send e-mail to: year2000@calpoly.edu or call the Cal Poly Help Desk at ext. 6-7000. □

Elmo Keller kicks off Computer Science Colloquia

Thursday, in the first fall quarter Computer Science Colloquium, professor Elmo Keller will demonstrate how an ordinary personal computer can be transformed into a powerful network security management workstation without modifying the underlying hardware or operating system.

"A Guide to Embedding the Linux Kernel" will be presented from 4:10 to 5 p.m. in Room 227 in the Dexter Building.

Keller will discuss the software issues of adapting the Linux operating system for embedded applications and describe the actual implementation of an embedded system, in this case a network security monitor.

Keller, the campus's leading expert on the Linux operating system, will demonstrate a complete Linux operating system running from a single diskette.

After the talk, refreshments will be served in Pilling Computer Science classroom 252.

For more information call computer science faculty member Lew Hitchner at ext. 6-2081 or the department office at 6-2824. □

Changes in Workers' Comp insurance carrier

A new contract with Ward North America Inc. to provide CSU Workers' Compensation requires that all injuries be reported to that organization for processing.

Ward North America replaces the State Compensation Insurance Fund (SCIF) as the insurance adjusters for all workers' compensation claims. All Cal Poly workers' compensation files have been sent to the Ward office in Fresno.

This will not change the process of reporting injuries at Cal Poly. Sierra Vista Hospital's Emergency Room and the Cal Poly Health Center (for first aid and minor injuries) are still the pre-authorized facilities for initial medical treatment for a work-related injury or illness. All reporting timelines for supervisors remain the same.

New claim forms will be distributed as soon as they are received, along with the revised internal forms. Until then, units should continue to use their current supply.

Questions should be directed to Mikie Steineke in the Human Resources and Employment Equity office at ext. 6-5427 or by e-mail at msteinek@calpoly.edu. □



Music professor and soprano Mary Rawcliffe will perform a varied music recital with fellow faculty members at 8 p.m. Saturday at Mt. Carmel Lutheran Church in San Luis Obispo. For details, call ext. 6-2406. □

S.A.F.E.R. Program needs "real" men, women

The S.A.F.E.R. (Sexual Assault-Free Environment Resource) program is sponsoring a universitywide search for the 10 "best" men and 10 "best" women on campus.

"Real Men" and "Real Women," according to the program's sponsors, are those who demonstrate a respect for the idea that sex should be "shared, not taken," and understand that everyone, regardless of race, sex, or sexual orientation, deserves to be treated with consideration.

Those chosen will be trained and asked to give sexual-assault-prevention presentations to campus groups.

Students as well as staff and faculty members are encouraged to enter the contest. Pick up applications at the Women's Center, Room 217 in the University Union. Applications are due Oct. 12.

For more information call ext. 6-2282. □

... Environment

Continued from page 1

material for class credit and entering it in the Product Design Contest for cash prizes.

The contest is sponsored by Brave New Wares, a company looking for product ideas. The company will pay a royalty to the department for any it accepts.

Art and graphic design students are encouraged to enter environmental awareness posters in the Poster Contest for cash prizes and possible use in environmental education programs.

Student groups looking for an opportunity to publicize their organizations' programs and solicit new student members are also encouraged to participate.

For more information, call Johnson at ext. 6-5227. □

B of Arch program wins re-accreditation

Cal Poly's five-year professional Bachelor of Architecture program has been granted re-accreditation for a full five-year term by the National Architectural Accrediting Board.

During winter quarter 1999, a visiting accreditation team spent several days on campus reviewing student work and meeting with students, faculty and staff members, administrators and alumni. All 52 criteria for accreditation were met.

"This is a remarkable record," said Martin Harms, dean of the College of Architecture and Environmental Design. "As far as I know, this level of success is rarely achieved." □

Still time to sign up for volleyball challenge

Sign-ups are still being taken at the Recreation Center for the Mark S. Reuling Memorial Endowment Volleyball Challenge to be played Oct. 8-9.

The cost is \$60 per six-member team, and each team member will receive a T-shirt.

This year's tournament will be played at the Rec Center and will have two divisions: one for faculty and staff members and student employees, to play Oct. 8; and one for members of fraternities, sororities and student clubs on Oct. 9.

Proceeds from the event will add to the endowment.

For information, call Vivian Phillips at ext. 6-5279 or Joe Long, ext. 6-1366. □

... CSEA

Continued from page 1

- Campus-funded bonus plans for exceptional performance by an individual or a group.

Performance-based salary increases will be in the form of one-time lump-sum bonuses not to exceed 5 percent (2.5 percent for those employees at the top of the salary range). More detailed information on the process will be distributed at a later date. □

Oct. 4-8 Rideshare Week to feature prizes, free ride

Faculty and staff members and students who pledge to bike, walk, car pool, van pool, or take the bus to campus at least one day during California Rideshare Week, Oct. 4-8, will be eligible for prizes ranging from an electric bike to walking shoes.

Pledge forms will be sent to all campus employees, and those who pledge will be entered in both a campus and a San Luis Obispo County RideShare prize drawing.

Other prizes include a CCAT (Central Coast Area Transit) bus pass, a fire extinguisher, an emergency preparedness kit, a calculator, a smoke alarm, membership at a local gym, a limousine ride to work, a Backstage Pizza party, gift certificates, and an Amtrak trip.

On Tuesday of Rideshare Week, all bus rides, including the regional CCAT bus, will be free.

Also on Tuesday, from 10:30 a.m. to 1:30 p.m., Commuter Services will have a "fair booth" in the UU plaza, where people can get pledge forms and ride-share information. Commuter Services will also be giving away gifts, and an electric bike will be on display.

Pledge forms are also available in the library, the ASI Business Office, and at Public Safety Services.

Pledge forms must be returned to Commuter Services, the library, the ASI Business Office, or Public Safety Services by Oct. 9.

Questions should be directed to Jacquie Paulsen, Commuter Services coordinator, at ext. 6-6680. □

IEEE to convene on campus Oct. 5

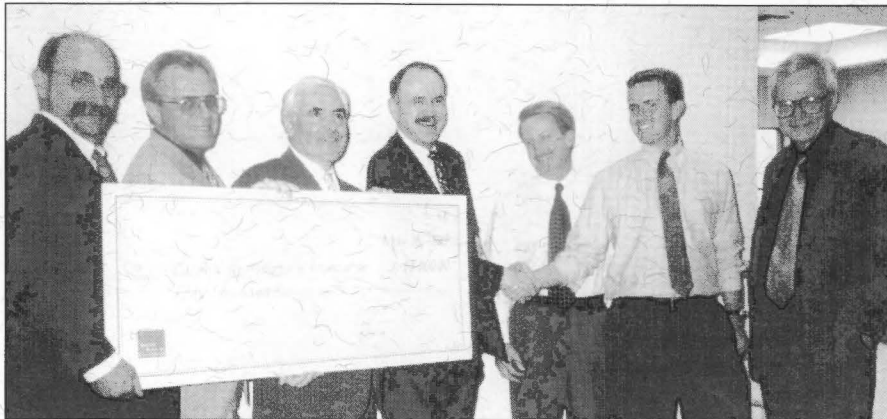
The Central Coast section of the Institute of Electrical and Electronics Engineers will meet from 7 to 8 p.m. Tuesday in Room 206 in the Engineering East Building.

Bernard J. Maxum will speak on "Internet-based Engineering Education: A Passing Fad or the Wave of the Future?"

Refreshments will be available about 30 minutes before the meeting.

For more information, call Ali Shaban of the Electrical Engineering Department at ext. 6-2918. □

ADVANCEMENT



From left: BFGC principals Bill Tuculet, Mark Engelen, Frank Ghezzi and Dave Cartnal present a ceremonial check to Richard Zweifel, College of Architecture and Environmental Design associate dean, Patrick Bartlett, 1999 BFGC scholarship recipient, and Allan Cooper, associate director of architecture.

BFGC Architects donate \$50,000 to CAED

BFGC Architects Planners Inc. donated \$50,000 to the College of Architecture and Environmental Design to create an endowment that will support students preparing to enter the architecture profession.

A 1965 Cal Poly architect graduate, David Cartnal, chief executive officer and president of the firm, said that over the last 50 years BFGC has hired at

least 50 Cal Poly graduates. That realization helped forge the idea of the contribution, Cartnal said.

The annual BFGC scholarships are awarded to architecture majors who have well-rounded professional and social skills, good grades, and the leadership skills necessary for an outstanding future in the profession. □

Hearst Lecture Series to kick off Oct. 11

The 1999-2000 College of Architecture and Environmental Design Hearst Lecture Series gets under way Oct. 11 with a talk by Santa Monica-based architect and teacher Julie Eizenberg.

Eizenberg will present "Living and Breathing in Real Time" at 3:10 p.m. in the Rotunda (Room 213) of the Business Building. The talk will focus on encountering architecture in "real life" as opposed to a purely academic setting.

Eizenberg co-founded Koning Eizenberg Architecture Inc. in 1981 and serves as its president. The award-winning, woman-owned architecture and planning firm is known for its imaginative, site-specific and people-oriented design approach.

Her belief that design excellence can be achieved with restricted budgets and a social orientation has been a driving force in the firm. The success of the company's projects nationally and internationally has

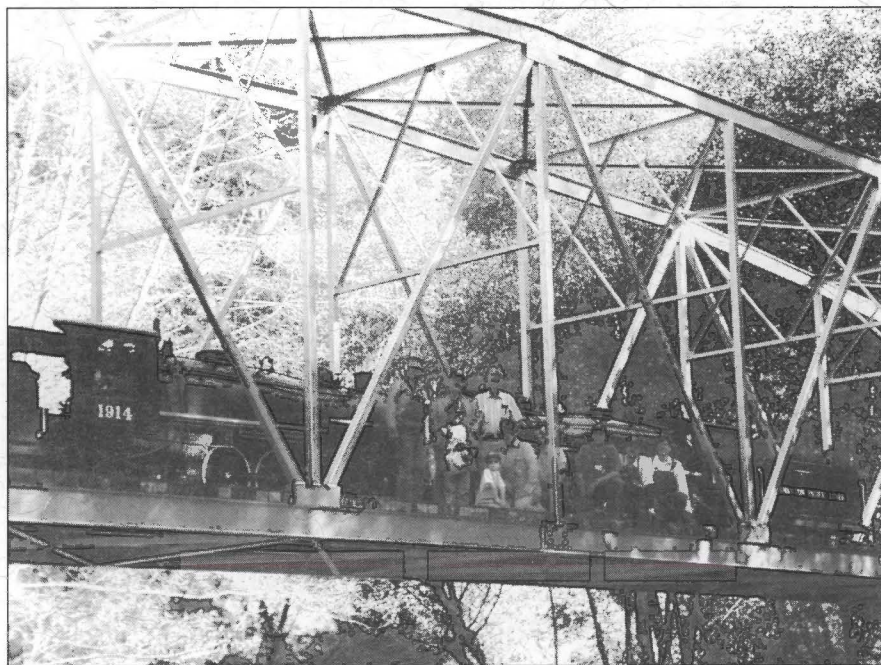
helped refocus architects' attention on those issues.

The firm has created unprecedented designs, such as the Simone Hotel, the first, new, single-room-occupancy hotel on Skid Row in Los Angeles in more than 30 years. It also is responsible for the master plan for such unique facilities as Los Angeles's historic Farmers Market.

Koning Eizenberg Architecture has achieved recognition for its groundbreaking work in housing and community-based projects and received the Progressive Architecture First Award in 1987 for affordable housing in Santa Monica.

Eizenberg has taught part time since 1982 at UCLA's Graduate School of Architecture and Urban Planning and has lectured extensively in the United States and abroad.

For more information, call Ann Beckman in the College of Architecture and Environmental Design at ext. 6-5138.



The Swanton Pacific Ranch train trestle, just north of Santa Cruz.

Spend Oct. 8 at Swanton Pacific Ranch

The faculty, staff members, alumni, family and friends are invited to an old-fashioned barbecue from 9 a.m. to 4 p.m. Oct. 10 at the Swanton Pacific Ranch at Davenport, 11 miles north of Santa Cruz.

Swanton Pacific Ranch Day will include unlimited rides beginning at 11 a.m. on the one-third-scale railroad from San Francisco's 1915 Panama-Pacific International Exposition. Tours and demonstrations in sheep-dog herding will also be given.

Swanton Pacific Ranch was donated to the College of Agriculture by alumnus Al Smith, who died in 1993. Smith earned a bachelor's degree in crop

science in 1944 and a master's in agricultural education in 1956.

The 3,200-acre ranch serves as an extension of Cal Poly's instructional programs in agriculture, forestry and other disciplines.

The barbecue costs \$12 for adults and \$6 for children. Reservations are due by Tuesday. To make reservations, call Ed Carnegie at 995-3659.

On Oct. 10, a chartered bus will depart from the Food 4 Less parking lot on South Higuera Street in San Luis Obispo at 6:30 a.m. and from the Target store parking lot in Atascadero at 7 a.m. Round-trip is \$15 per person. □

Deadlines set for faculty support grants

It's time to think about submitting proposals for the State Faculty Support Grants program, which supports research, scholarship, and creative activities that help faculty members remain current in their fields. The work should also be intended to strengthen California socially, culturally, and economically.

Faculty members in Bargaining Unit 3 are eligible to compete for funding. Priority will be given to non-tenured faculty

members and to projects likely to attract external funding.

The four types of support are:

- Mini-grants of up to \$5,000, to be expended during the academic year.
- One- or two-month summer fellowships to initiate, continue, or complete a creative scholarship or research project. Awards will be made only to faculty members who will return to

Continued on page 5

Area students, teachers to visit College of Ag

Community college students, high school seniors, and teachers will get a look at the future of agriculture in the 21st century as the College of Agriculture opens its doors for its Fall Preview Oct. 8.

The college is hosting the one-day event to introduce prospective students to the opportunities available in agriculture. Individual department sessions, admission workshops, curriculum activities and club overviews will be included in the program.

The general session will begin at 9:30 a.m. in the Ag Courtyard in front of the Agricultural Sciences Building.

Admission for the day is free, including parking. College clubs will be selling lunch items.

For more information, contact the College of Agriculture at ext. 6-2161, or visit its Web site at www.calpoly.edu/~cagr and select Fall Preview. □

ASI Children's Center awarded two grants

The ASI Children's Center has been awarded two grants that will help the center better serve student parents.

The first grant, from the California Department of Education, will provide \$175,000 a year, indefinitely, to subsidize the cost of child care especially for low-income students who have infants and toddlers.

A second grant, which will provide \$73,000 a year for the next four years, was awarded by the federal Department of Education and will allow the center to develop an ASI Children's Center Day Care Network.

The network will involve contracts with local home-day-care providers who want to become affiliated with the ASI Children's Center. The providers will receive ongoing training, resources and referrals. In turn, they will save a certain number of slots for children of Cal Poly families.

The grant will also provide funding to institute a sliding fee scale for parents who cannot otherwise afford child care.

The grant applications were initiated by Tonya Iversen, director of the ASI Children's Center. □

Personal info can be restricted in directory

Every year ASI publishes a Student Directory that is made available to all students and faculty and staff members.

The directory lists all students attending Cal Poly and includes their name, phone number, major, class level and e-mail address.

Anyone who does not want to have personal information included can use the Mustang Info Web site, www.mustanginfo.calpoly.edu, to restrict information access. Go to Student Directory Information Restrictions.

Students can also complete the process at the Academic Records office, Adm. 222.

All modifications to information restrictions must be completed by Nov. 12. □

Ticket information

Tickets to the performances listed in today's *Cal Poly Report* are on sale at the Performing Arts Ticket Office from 10 a.m. to 6 p.m. weekdays and from 10 a.m. to 4 p.m. Saturdays. Call 6-ARTS (ext. 6-2787), or to order by fax, dial ext. 6-6088. □

... Grants

Continued from page 4
work at Cal Poly the following fall quarter.

- Assigned time for research, creative activity or scholarship.
- A quarter leave at full pay to develop or complete an appropriate activity related to one's academic discipline.

Deadlines to submit proposals for the awards are:

- 2000-2001 academic year awards (mini-grants, assigned time, quarter leaves): First day of spring quarter 2000 (March 27).

- Summer 2000 fellowships: Dec. 3.
- Applications are due in the Research and Graduate Programs office (Room 155 in the Science and Math Building) by 4:30 p.m. on the deadline date. Call ext. 6-1508 or stop by for guidelines and an application.

Funding for academic-year awards, to be announced in May, is contingent on next year's budget. □

Jazz Master Class planned for Oct. 9

A jazz master class with the 1977 Monterey Jazz Festival's Most Valuable Musician, string bassist David Friesen, and guitarist Sid Jacobs will be held from 3 to 5 p.m. Oct. 9 in Room 216 in the Davidson Music Center.

Friesen, whose release "Through the Looking Glass" was voted by the Los Angeles Examiner one of the 10 best jazz albums of the '70s, has racked up considerable praise.

Critic Ken Rattenbury called him a "miracle" with "a rounded, powerful tone, a splendid sense of time, which contributes hugely to the rollicking, powerful swing that he generates throughout every measure. His pizzicato technique has, literally, to be heard to be believed; his

solo creations are unbelievable in their logic and completeness;... (he demonstrates) a complete mastery of the art of playing in tune."

Guitarist Jacobs is an author and teaches at a musicians institute.

The public is welcome to attend the free master class to listen to Friesen and Jacobs work with university jazz combos. Attendees will not have an opportunity to play or have their own technique critiqued.

The class is sponsored by the College of Liberal Arts, the Music Department and funds from the Cal Poly Plan.

For more information on this or other Music Department events, call ext. 6-2406 or visit the department's Web page at <http://www.calpoly.edu/~mu>. □

'Best' ceramics student to show art in Club 221

One of the finest ceramics students ever to come through Cal Poly is exhibiting his work in the ASI Fine Arts Club 221 – formerly known as the UU Galerie.

Ceramic art by Chinese-born mechanical engineering student Guan Xiao is on display through Dec. 10 in a solo exhibit titled "A Journey of the Warrior Spirit."

An artist's reception is planned from 2 to 4 p.m. Oct. 16 in the Club 221 gallery.

Xiao has earned high praise for his work. Ceramics professor Henry Wessels described him as "by far, the best student I have ever had."

Jeanne LaBarbera, Cal Poly fine arts curator, said, "In all the years I have

taught and interacted with students, I have never encountered a student with a more solid philosophical and cultural underpinning for his art."

Xiao was 18 when he came to the United States in 1989. He prefers to work with clay because its "responsiveness always brings out my sensitivity for expression. Together we create forms that stretch both of our limitations."

Club 221 is open longer hours than the Galerie was: Monday through Friday from 9 a.m. to 9 p.m. and Saturday and Sunday from noon to 9 p.m.

For more information, call LaBarbera at ext. 6-1182. □

Cal Poly Arts to bring flamenco to Cal Poly

La Tania and her company of eight dancers and musicians will present an intimate evening of the highly charged music and dance of flamenco at 8 p.m. Oct. 13 and 14 in the Theatre.

La Tania, recognized as one of today's brightest flamenco dancers, began her professional career at 17, dancing with various companies on the Spanish island of Mallorca.

She formed her own company in 1991 in Madrid and since 1993 has performed in the United States and around the world, earning praise from critics and fans alike.

A review in The Boston Globe described her as a "virtuoso of mood as well as movement ... in one long solo of yearning and desire, you can almost feel the

steam rising from her."

A Los Angeles Times review said, "She lets loose with a barrage of precision heel work: clean, furious, incessant, almost abandoned."

Theatre and dance professor Moon Ja Minn Suhr will give pre-performance lectures before each of La Tania's appearances. Suhr will talk about La Tania's background and achievements as a flamenco dancer at 7 p.m. in the Performing Arts Center's Philips Hall.

Suhr will explain the different types of flamenco dances, compare classical to modern flamenco, and compare flamenco to other dance forms.

Tickets to this Cal Poly Arts event are \$18 to \$28. □

Appointment

John Rogers, management professor at Cal Poly since 1986, has been appointed area coordinator through the 2000 academic year. □

Assigned time available to develop proposals

To stimulate research activity, the Research and Graduate Programs office will consider requests for assigned time for the specific purpose of preparing grant or contract proposals.

Many faculty members have indicated that it is difficult to prepare proposals – especially multidisciplinary projects involving several investigators – while carrying a full teaching load.

Faculty members who wish to apply for assigned time should request it in writing and indicate the number of WTUs requested, the academic term for which the request is made, the agency or program for which the proposal is being prepared, and the application deadline.

Additional information that supports the request, such as preliminary work accomplished on the project or the proposal development, should be included.

Requests should be signed by the department head or chair and dean and sent to the dean of research and graduate programs.

Applicants should also include a current C.V. and a list of other university support received during the last five years.

Although special consideration will be given to requests that are matched with assigned time from the college, it is not required.

Requests will be linked to proposal deadlines and can be submitted any time during the academic year; however, because funds are limited, requests made early in the academic year, or even before the start of the year, will have a greater likelihood of approval.

It is anticipated that three to six WTUs will be provided and reimbursed at the minimum faculty replacement level for an assistant professor.

For more information, call the Research and Graduate Programs office at ext. 6-1508. □

PIECE OF MIND

A question of safety and Social Security numbers

Dear Editor:

With numerous stories appearing in the media lately about I.D. theft, does it make sense to have the Social Security number of each and every student and staff displayed so prominently on the front of our I.D. cards—where someone can read it right over our shoulders at the grocery store?

We all know our own S.S. numbers. Why not blank the first five digits?

Thanks for listening,
Mark Smith
Library

...

Student Life, which oversees the identification card program, responds:

The use of Social Security numbers for identification purposes has been scrutinized by many organizations recently. Currently, the entire university uses Social Security numbers for all its records and identification, and the

“readers” the university has are equipped to read only the Social Security numbers.

The scanning equipment that is used in various campus entities such as Campus Dining, El Corral, and the library, only recognizes a user’s Social Security number.

The campus, as a whole, has been exploring different possibilities for identifying faculty and staff members and students and hopes to move to another system in the future.

...

“Piece of Mind” is for your letters about campus issues. Questions, explanations, compliments, complaints—we want them all. Keep them brief, but keep them coming. Include name, department and phone number. E-mail to polynews @polymail, fax to ext. 6-6533, or mail to the Communications Office, Heron Hall.

— The Editors □

London Study Program accepting applicants

The London Study Program is accepting faculty applications for teaching in London either in fall 2000 or spring 2001.

A new feature is a \$3,000 stipend for a junior faculty member (one who has not reached the rank of full professor) chosen to teach in London either quarter.

During this fall quarter, a single committee will screen candidates for both sessions.

The new stipends are intended to encourage participation by faculty members who have previously considered the cost of living in London to be too great.

Although the curricular emphasis has been on general education courses in the humanities and social sciences, the program encourages and supports participation by teachers in the professional areas also. To date, about one-fourth of the

London faculty members have come from colleges outside Liberal Arts.

The primary emphasis in the selection process will be to choose a faculty that offers the courses needed by the participating students. Final selection will be determined primarily by student course selection because, while faculty development is an important element of London Study, the program is driven by the curricular needs of the students.

Cal Poly’s London campus is in the academic heart of the Bloomsbury district, within two blocks of the British Museum.

Applications have been sent to all dean’s offices and are also available from the International Education and Programs (IEP) office, Room 108 in the Math and Science Building (ext. 6-6161).

Applications must be submitted in duplicate by Oct. 29 for departmental approval, then forwarded via the applicant’s dean to the London Study Program’s faculty screening committee, in care of program director John Snetsinger.

For more information, call Snetsinger in IEP at ext. 6-5969. □

Obituary

James Myers

James M. Myers, a Foundation employee and bindery assistant at the California Specialized Training Institute since March 1995, died Sept. 15. □

REC Sports has trainers, new workshops for fall

ASI Recreational Sports this year has certified personal trainers to answer questions, develop individualized workouts, teach the basics of weight training (including the proper form and body alignment to use with free weights), and familiarize members with the Exercise Room's cardiovascular and other equipment.

Basic fitness workshops and Exercise Room orientation sessions will be offered in the fall.

Rec Sports, now directed by Marcy Maloney, also offers group fitness and instructional classes in martial arts and self defense, massage and yoga, and aerobics.

More-competitive athletes might be interested in intramural sports, which is not just for students.

Stop by the Rec Center for more information about membership, games and programs, or call ext. 6-1366. □

Raffle to be held to benefit cat program

The campus's volunteer cat program's fall quarter raffle is under way, with prizes that include two, one-hour massages from a practitioner at Healthy Balance and from Mobile Swedish Massage, a free animal medical examination by the Edna Valley Veterinary Clinic and the Equine Center, and editing or resume and letter writing services by English Department faculty member Melody DeMeritt.

Proceeds from ticket sales will help pay veterinary expenses and shelter supplies for the campus's resident cats. Tickets, at \$1 each or six for \$5, can be bought from Geri Bolivar, ext. 6-2321; Jane Brechler, 6-2553; DeMeritt, 6-6136; Sharon Dobson, 6-5872; Edie Griffin-Shaw, 6-5200; Sheri Jacobsen, 6-6215; Ellen Notermann, 6-1625; and Linda Patton, 6-1680.

For more information on the program, volunteer work or adoptions, call Griffin-Shaw. □

Room change for Colloquia

Please note: All fall quarter Physics Colloquia will be held in the Science Building, Room E-45. □

Position vacancies

Vacancy information and applications for the following positions are available from the appropriate Human Resources office. Information is also available on the Cal Poly home page (www.calpoly.edu; click on "General Information").

STATE (Adm. 110, ext. 6-2236 or job line at ext. 6-1533). Official application forms must be received by 4 p.m. on the closing date or be postmarked by the closing date. (No faxes, please.) For positions marked with an asterisk, qualified on-campus applicants currently in Bargaining Units 2, 5, 7 and 9 will be given first consideration.

#0E036: Temporary Emergency Administrative Support (Clerical) Pool, Human Resources and Employment Equity, Closing date: Oct. 13. Short-term appointments (up to 90 days) in any department on an as-needed basis. Appointments vary in time base, classification, salary and length of assignment. Those hired in emergency clerical positions provide varying levels of general office, clerical, secretarial and administrative support for students, faculty, and/or staff.

#0E033: Predoctoral Internship (Helper Aide), Health and Counseling Services. Open until filled, however, application review will begin Dec. 1. The program: The Health and Counseling Services Center is a member of the Association of Psychology Postdoctoral and Internship Centers and the Association of Counseling Center Training Agencies. Participants in the Predoctoral Internship Program receive two hours of individual supervision, a weekly case conference, seminars addressing professional specialized training in such topics as eating disorders, sexual abuse, trauma recovery, ethics and the law, multicultural counseling, stress management and organizational consultation. Additional training in the university's Employee Assistance Program is also available. The positions: There are two temporary 12-month positions available beginning July 1, 2000 – one in Counseling Services and one in the Employee Assistance Program. These positions receive supervised clinical experience in individual and group therapy, crisis intervention, outreach, health psychology, consultation, and prevention education. Direct specific inquiries regarding the position to Elie Axelroth, training coordinator, Health and Counseling Services, at 756-2511.

#09037: Analyst/Programmer –

Career, Enrollment Support Services-Admissions (Unit 9).* Closing date: Oct. 13. Salary: \$3,457-\$4,721/mo. plus any salary increase negotiated through collective bargaining. The Admissions office is committed to supporting a campuswide, student-centered approach to the recruitment and admission endeavor. This position will analyze, develop, code and document computer applications that are specific to the Admissions office. Additionally, the incumbent will work closely with the executive director and the associate director to develop a variety of software solutions to meet the needs of the unit.

#09040: PC/LAN Support Specialist (Network Analyst-Career), Information Technology Services – User Support Services (Unit 9).* Closing date: Oct. 13. Salary: \$3,457-\$4,721/mo., plus any salary increases negotiated through collective bargaining. Two full-time positions: one probationary; one temporary to 6/30/2000 with renewal dependent on funds. The position provides technical support, analysis, planning, design, implementation, and maintenance of campus LANS. Additionally, this position will provide general PC support. Must be willing to work evenings and weekends as needed.

#0M041: Director of Advancement (Administrator II), College of Architecture and Environmental Design. Closing date: For full consideration all application materials should be submitted by Oct. 13. However, position is open until filled. Salary: \$45,000 - \$65,000 annual hiring range commensurate with qualifications and experience.

#04043: Student Services Professional I-B, Student Academic Services (Unit 4). Closing date: Oct. 13. \$2,662 - \$3,191/mo., temporary full-time position to 6/30/2000. This position provides academic advising services, assists in coordination and implementation of student retention activities, academic components and/or special projects for Student Academic Services.

#07044: Administrative Support Assistant I, Academic Skills Center (Unit 7).* Closing date: Oct. 13. \$728.50-\$940/mo., plus any salary increases negotiated through collective bargaining; half-time/probationary, 10/12 month position with July and August off. The Academic Skills Center is a program

Continued on page 8

... Position vacancies

Continued from page 7

within Student Academic Services and offers a variety of retention programs and campus support services. The position provides clerical assistance and support for the day-to-day operation of the Academic Skills Center.

#04045: Athletic Academic Advisor, (Student Services Professional II), Academic Affairs, Athletics. (Unit 4). Closing date: Oct. 27. \$3,020 - \$3,630/mo. This position provides academic advising, academic support and retention services for student athletes. The selected candidate must pass a pre-employment background fingerprint check.

#07046: Accounting Technician I, Administration and Finance – Fiscal Services (Unit 7)* Closing date: Oct. 13. \$12.54 - \$14.86/hr. plus any salary increases negotiated through collective bargaining. Temporary, intermittent/on-call pool, to June 30, 2000, renewed annually as needed. This position receives and receipts money for a large volume of transactions. Hours may vary from zero to 40 within any given week.

FOUNDATION (Foundation Adm. Building, job line at ext. 6-7107). All Foundation applications must be received (not just postmarked) by 5 p.m. of the closing date. (No faxes.)

Catering Service Supervisor, Campus Dining Closing date: Position is open until filled; review of applications begins Oct. 8. Salary: \$10.73-\$13.95/hr. Variable schedule involving day, evening, and weekend work assignments as dictated by catered event schedule. Assist catering manager with planning, directing and leading the service and execution of events. Requirements: high school diploma or equivalent and a minimum of four years' experience in providing catering service with at least three years' experience in a supervisory role. Experience in organizing, planning, and providing catering service for groups as large as 1,000 persons. Wide knowledge of the principles, techniques, and procedures of service provided at catered events. Must be able to establish and maintain good working relationships with catering sales office, production staff and customers; operate standing serving equipment and vehicles with automatic and standard transmissions; and lift and carry 50 lbs. Must have a valid California driver's

license, a driving record acceptable to our insurance underwriters, drive a manual transmission mini-truck and work a variable schedule involving day, evening, and weekend work assignments as dictated by catered event schedule.

Catering Service Assistant Supervisor, Campus Dining. Closing date: Position is open until filled; review of applications begins Oct. 8. Salary: \$8.39-10.92/hr. Variable schedule involving day, evening, and weekend work assignments as dictated by catered-event schedule. Assist catering supervisor with planning, directing and leading the service and execution of events. Requirements: high school diploma or equivalent with a minimum of two years' food service experience including one year of catering experience, and one year supervisory experience. Must be able to establish and maintain good working relationships with production staff and customers; operate standard serving equipment and vehicles with automatic and standard transmissions; and lift 50 lbs. Must have a valid California driver's license, a driving record acceptable to our insurance company underwriters, drive a manual transmission mini-truck and be able to work variable hours including evening and weekends.

PAC Concession/Catering Service Assistant Supervisor, Campus Dining Closing date: Position is open until filled; review of applications begins Oct. 8. Salary: \$8.39-10.92/hr. Variable schedule involving day, evening and weekend work assignments as dictated by Performing Arts Center event schedule. Assist catering manager with scheduling and training of employees, product requisition and maintenance of high-level customer service. Requirements: high school diploma or equivalent and one year supervisory experience in catering plus one year experience in retail food service preferred. Must be able to operate related food service equipment, work multiple tasks and have the ability to establish, develop and maintain successful working relations with others. Must be able to deal tactfully in customer contacts and maintain a consistent high level of service. Must be able to follow oral and written directions. Must possess a valid California driver's license and maintain a driving record acceptable to insurance company underwriters; drive a manual transmission mini-

truck and be able to work variable hours including evening and weekends. Must be able to lift and carry 50 lbs.

Campus Dining Assistant, Campus Dining. Closing date: Oct. 8. Salary: \$7.44-9.66/hr. Full-time, 10-month position. Assist in setting up and serving food in a high-volume student dining facility. Supervise and train student assistants and insure a high level of customer satisfaction. Requirements: high school diploma or equivalent and one year full-time high-volume food service experience, cafeteria experience preferred. Must be able to operate standard serving equipment, establish and maintain good working relationships, understand and carry out both verbal and written communications. Lift and carry 50 pounds. Must have a valid California driver's license and a driving record acceptable to our insurance underwriters.

Cook, Vista Grande: Closing date: Oct. 8. Salary: \$9.50 - 12.35/hr. Full-time, 10-month position. Prepare, cook, set up and back up the VG Cafe hot-food line and the Vista Grande Restaurant cooking line. Requirements: high school diploma or equivalent and minimum two years' cooking experience, preferably in a large volume university or college food service, hotel or full-service restaurant. Must possess a basic knowledge of the principles, techniques, terminology and procedures of volume food production. Skill in the safe and efficient operation of standard high-volume kitchen equipment. Must have capacity to interact with fellow employees and management, lift at least 50 pounds, have valid California driver's license and driving record acceptable to our insurance company underwriters. □

CPR schedule

The *Cal Poly Report* is published every Wednesday during the academic year.

Articles are due in the Communications Office by 10 a.m. on Thursday for the following week's edition.

Items can be e-mailed to news@polymail (add calpoly.edu if needed), faxed to 6-6533, or mailed to the Communications Office, Heron Hall.

For information call ext. 6-1511. □