

CAL POLY REPORT

California Polytechnic State University
San Luis Obispo, CA 93407

Vol. 52, No. 3
September 26, 1997

Dateline

FRIDAY, SEPTEMBER 26

•**Volleyball:** USF, Mott Gym, 7 pm. (\$)

•**Men's Soccer:** Gonzaga, Stadium, 7 pm. (\$)

SATURDAY, SEPTEMBER 27

•**Music:** "Weird Al" Yankovic, Cohan Center, 8 pm. (\$)

SUNDAY, SEPTEMBER 28

•**BRAVO! SLO:** PAC anniversary celebration: Music, dance and more, Cohan Center, 1 pm. (\$)

•**Women's Soccer:** UCI, Stadium, 3 pm. (\$)

•**Ballroom Dance:** Meeting 5 pm; lessons 6 and 7 pm, Odd Fellows Hall. (\$)

MONDAY, SEPTEMBER 29

•**Reception:** Cal Poly Women's Club, Smith Alumni Center, 2 pm.

•**Speaker:** David Martin, "From Virtual to Reality — An Architect's Outlook," Business Rotunda, 7 pm.

TUESDAY, SEPTEMBER 30

•**California Ride Share Week Info Booth:** UU Plaza, 11 am.

THURSDAY, OCTOBER 2

•**Voice Lecture-Demonstration:** Soprano Maria Jette, Music Building 218, 11 am.

FRIDAY, OCTOBER 3

•**Women's Soccer:** UCB, Stadium, 7 pm. (\$)

SATURDAY, OCTOBER 4

•**Music:** Ray Charles, Cohan Center, 8 pm. (\$) SOLD OUT.

MONDAY, OCTOBER 6

•**California Ride Share Week:** Through Friday, Oct. 10.

FRIDAY, OCTOBER 10

•**Men's Soccer:** UCI, Stadium, 7 pm. (\$)

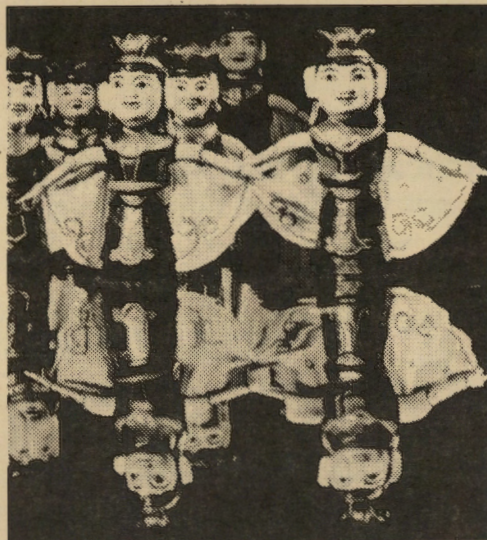
•**Volleyball:** UOP, Mott Gym, 7 pm. (\$)

Gallery Exhibits

•**Architecture Gallery:** "Form Follows Software: A Revolution in the Architectural Process," Sept. 29-Oct. 10.

•**University Art Gallery:** Thai prints, Sept. 21-Monday, Nov. 3

•**UU Gallery:** Mixed media by Charlene Knowlton, Sept. 26-Oct. 26.



Thang Long Water Puppet Theatre — Cal Poly Arts Family Series event, is coming to the PAC Tuesday, Oct. 14.

Incoming freshmen are tops in their class

Cal Poly's fall 1997 enrollment includes some of the most academically qualified students among one of the most culturally diverse incoming freshmen classes in the university's history.

More than 3,000 new students have enrolled, which includes approximately 2,150 freshmen and almost 860 transfer students. Overall, enrollment is expected to reach 16,500, an almost 3 percent decrease from last year's 17,000.

This year's average freshman has a high school GPA of 3.6 compared with last year's 3.48. Average SAT scores rose from 1124 in 1996-97 to 1160 in 1997-98.

These numbers have been improving since 1991, when the average grade point was 3.4 and SAT scores were 1095.

Mexican Americans and other Hispanic students represent 17 percent of this year's entering class, up from 15 percent last year. The percentages of Native Americans, African Americans, and Pacific Islanders have also increased, while the number of Asian, Filipino, and white students has declined.

Sports nets big donation in Pepsi deal with Dining

The Foundation has signed a seven-year exclusive agreement with Pepsi for campus beverage sales in exchange for a major donation.

Local media have reported the gift is \$1.4 million. Foundation Director Al Amaral said the contract will not allow him to reveal the exact dollar amount but said the figure is "substantial."

Most of the gift will go toward the sports field project on the north side of campus, which is to be used primarily by Rec Sports. ASI will receive \$5,000 each year — for a total of \$35,000 — to support student clubs.

At the request of the university and working with Athletics and ASI, the Foundation sought competitive proposals for the contract. Pepsi offered the best deal for the university. Cal Poly is to receive \$400,000 immediately, with the rest to be paid over the seven years of the contract.

Campus Dining is managing the program.

Under the contract, only drinks distributed by the Pepsi-Cola Bottling Co. will be sold in Campus Dining facilities and from vending machines, including the machines operated by student clubs. Other-brand machines have already been replaced. Vending machine prices, which have varied, will now be set at a uniform 65 cents.

Other than Pepsi itself, Pepsi Bottling drinks include Slice, All Sport (like Gatorade), Aquafina water, Lipton iced teas, and (listen closely here) Dr. Pepper when it's served from fountains but not when it's sold in cans (that's Coke's territory).

A few other drinks that are not similar to a Pepsi product — Hansen's Smoothies, for example — will still be sold at Julian's and the Campus Store. Catered events are outside the contract and not subject to its limitations.

(Related letter on page 6)

Performing Arts Center to celebrate Sept. 28

The Performing Arts Center San Luis Obispo is planning a family event from 1 to 5 pm Sunday, Sept. 28, to celebrate the Christopher Cohan Center's successful first year.

BRAVO! SLO, showcasing primarily local young talent, will include concerts, theater and artists groups, magic shows, and art exhibits.

The Central Coast Children's Choir will kick off the festivities in Harman Hall at 1 pm, followed by the Central Coast Children's Theater, Academy of Dance, SLO County Youth Symphony, and Pat Jackson's American Dancers.

In addition, five organ concerts are scheduled in the Pavilion. The first begins at 1 pm. Audience members will have an opportunity to play the organ during an "open console" beginning at 4:45 pm.

Tickets are \$7 for adults and \$3 for children and can be bought at the Performing Arts Ticket Office from 10 am to 6 pm weekdays and from 10 am to 4 pm Saturdays. To order by phone, call 6-ARTS (6-2787).

Hotline to hold benefit Bowl-a-thon

Hotline, an organization whose trained volunteer staff offers a variety of telephone services to county callers 24 hours a day, 365 days a year, will hold its annual Bowl-a-thon Oct. 16-19, Oct. 24-26, and Nov. 1.

Six lanes have been reserved on Sunday, Oct. 26, for Cal Poly employees and students who want to participate in the fund raiser.

Last year, Cal Poly bowlers raised more than \$3,000, and the university received an award for its efforts.

Four staff members were also recognized: Toni Wensley, Student Accounts; Elaine Ramos Doyle, Institutional Planning and Analysis; Joan Stevens, Soil Science; and Ted Webster, Information Technology Services.

Doyle also won last year's "Ken Walters Memorial Award," jointly awarded by Hotline and Cal Poly to the bowler who exhibits the "enthusiasm and dedication" that Walters, a former employee now deceased, gave to Hotline.

Staff and faculty members, students,

and management staff members are welcome to show their support through either pledges or contributions to Bowl-a-thon participants or by bowling on Oct. 26.

For more information, please contact Cal Poly team coordinator Doyle at eramosdo@calpoly.edu or ext. 6-1520.

Orchesis Dance Company to hold auditions

Faculty members are asked to let their students know that Cal Poly's Orchesis Dance Company will hold auditions for the 1997-98 school year at 6:10 pm Thursday, Sept. 25, in the Crandall Dance Studio (Room 6 in Crandall Gym).

Moon Ja Minn Suhr, artistic director and Theatre and Dance Department faculty member, will hold information and audition workshops at 6:10 pm Tuesday and Wednesday, Sept. 23 and 24, also in the dance studio.

Those selected will participate in the annual dance concert on Jan. 30-31 and Feb. 5-7 in the Theatre.

Career Services goes online

Career Services' new Web Walk-Up system allows students to sign up for career, co-op, and summer on-campus interviews and have their on-line resumes sent to employers.

Students can also learn about hundreds of summer and seasonal employment opportunities, seven days a week, 24 hours a day.

They can register at Career Services, and within two working days, they can login to Web Walk-Up.

A list of employers interviewing on campus, the interview dates, and position descriptions are listed on Career Services' home page at www.careerservices.calpoly.edu. From the menu, select "Web Walk-Up Student Login Page." Enter nine zeros (000-00-0000) where it asks for the student ID number. Do not enter numbers where it asks for student PIN.

Career Services is located across from Mustang Stadium and is open from 8 am to 4:30 pm Monday-Friday.

Scholarship named for Owen Servatius

A scholarship has been established in honor of Owen Servatius, a Cal Poly alumnus and longtime employee, now retired, who is being recognized by staff and faculty members, alumni, friends and family.

A memory book is also being compiled for him. Staff and faculty members who would like to contribute can send their items to Linda Emmick, advancement director for the College of Business. Entries should be received by Friday, Nov. 14.

Servatius, who retired in 1983, began working at the university in 1947 as assistant to then-President Julian McPhee. He earned a bachelor's degree in 1959 and a master's in 1964. He began teaching business courses full time in 1958.

He served as acting dean for the School of Business and Social Sciences in 1973-74.

During his 36-year tenure, Servatius became widely known and earned the respect of the staff, faculty, community and students.

A tireless supporter of the university and its programs, he served as an advisor to the Block P organization, a group of student athletes who perform community service; acted as secretary-treasurer of the Cal Poly Alumni Association; and advised for Homecoming. He also presented hundreds of programs on behalf of Cal Poly to organizations throughout the state.

In recognition of Servatius's dedication, service and continued interest, the first Owen Servatius Scholarship will be awarded at a dinner honoring him during Homecoming Weekend, Nov. 15, at Knickers at the Dairy Creek Golf Course near Camp San Luis Obispo.

SIS+ training session offered fall quarter

One Student Information System Plus (SIS+) training class for new users will be offered fall quarter from 8:30 to 10 am on Wednesday, Oct. 15, in Chase Hall, Room 104.

Employees need to complete a training session before they can receive a SIS+ account and access the student database.

To reserve a space, call Betty Sawyer at ext. 6-1344.

HOT TOPIC OF THE WEEK:

Cal Poly Arts' Hoskins explains ticket policy

With the new Cal Poly Arts season just under way, we thought it would be a good time to talk with Cal Poly Arts Director Ralph Hoskins about program policies, especially those related to ticket sales that have been the point of some controversy.

Season tickets – tickets to at least four events – go on sale first to those who bought season tickets in previous years. As stated in the season brochure: "Subscribers get first choice of seats based on the number of years one has consecutively been a subscriber and the date the order is received."

After renewing subscribers have had a chance to buy season tickets, new subscribers can order them.

Tickets to single events go on sale last. Some patrons have expressed their displeasure in not being able to buy tickets to just one event until the season ticket subscription period is over because some shows could sell out before single tickets become available. This year three shows did sell out: the Spirit of Ireland, Porgy and Bess, and multimedia artist Ron Pellegrino, who's playing in the Pavilion.

Hoskins explains the rationale for this policy:

Our philosophy is to reward commitment. Our subscription policy fosters commitment to the program season after season and encourages commitment to new and diverse offerings. Our subscriptions are the lifeblood of the organization, and our policy is at the foundation of our success.

The practice of guaranteeing priority to multiple show orders has been in place 11 years. We do not believe we should break our contract with our most loyal patrons.

It has never been our goal to turn away ticket buyers. Sold-out shows stem from not booking enough performances, not from our subscription policies. It is sometimes difficult to prudently anticipate audience demand, particularly during periods of rapid growth such as we're now experiencing. Our subscription base has grown 228 percent since the Performing Arts Center opened. As we gain more experience in attendance at the center, we'll be able to book enough performances so that fewer people will be disappointed.

Q: Couldn't you reserve a certain number of seats for single ticket buyers?

A: Not without limiting the number of subscribers we accept or the number of tickets they can buy. Because we have a "Create-Your-Own-Series" system, it is impossible to predict the number of shows or the number of tickets to each show that subscribers will buy. An important fact to remember is that some Cal Poly Arts events are presented outside the context of the subscription series. When the Cohan Center opened, we instituted a "Center Stage" program, a parallel season of stand-alone shows. In the 1997-98 season, we'll present six to eight high-profile shows – Weird Al Yankovic and Carol Burnett have been announced so far – on a first-come basis.

Q: How do other venues handle ticket sales?

A: The vast majority of arts presenters across the country – I'd say 90 percent – have subscription policies similar to Cal Poly Arts.

Hoskins would like to point out some other benefits of becoming a season subscriber:

Guest offer: Once a year, subscribers are invited to give two free tickets to a Cal Poly Arts event to someone who has never attended a Cal Poly Arts-sponsored event.

Ticket discounts: A 5 to 15 percent discount is offered when buying season tickets, depending on the number of events you buy tickets to and the date you bought them.

Ticket exchange: Season ticket holders unable to attend a performance to which they have tickets have until one week before the original performance date to exchange them for tickets to another event.

Ticket donations: Subscribers who are unable to use tickets and have missed the exchange deadline can return their tickets and receive a tax-deductible donation receipt.

"Cal Poly Arts is a non-profit organization with an educational mission," Hoskins said. "Our subscription policy serves that mission extremely well. Without it, we would not be able to offer the quality or range of performances we do."

Cal Poly Arts' phone number is 6-6556. If you have Netscape 3, you can visit their Web page at www.calpolyarts.org.

Utilidor's second phase means utility shutdowns

If you thought phase one of utilidor was disruptive with torn up roads and sidewalks, just wait.

Now that all roads are open and most lids and sidewalks have been poured, the second phase of the project begins – the dreaded utilities shutdowns.

Most utilities to most buildings will

need to be interrupted at some point to make the connections to the new systems. A majority of the interruptions will happen during the night and on weekends.

The electrical shutdowns have been posted on the Utilidor Web site, which can be accessed through the Cal Poly

home page under Whats New(s). If time allows, domestic water and domestic hot water shutdowns will also be posted.

If you don't have access to the Web site, call Deby Ryan at ext. 6-6806.

Appointments, other changes noted in Academic Affairs

Academic Affairs has made several appointments and an organizational change.

The University Center for Teacher Education, under the direction of Susan Roper, now reports directly to the provost and vice president for academic affairs instead of through the associate vice president for academic programs.

John Snetsinger, professor of history, has been named the interim director of global affairs for '97-'98. He is stepping in for Irel Urreiztieta, who is on an extended medical leave. In addition, Snetsinger will continue in his role as director of the London Study Program and will teach in the History Department.

H. Joanne Freeman, a professor in the Industrial Engineering and Manu-

facturing Department, has been appointed to a half-time position as WASC accreditation coordinator, to lead the university's 10-year self-study that will be submitted in 1999. Freeman will continue to teach half time.

Faculty Affairs now 'Academic Personnel'

The Faculty Affairs office is now called the Academic Personnel office, under the continued direction of Michael Suess.

The name change more accurately reflects the activities and responsibilities of the office, which encompass instructional faculty and academic-related personnel matter. To correspond with this change, Suess' title has been changed to associate vice president for academic personnel.

Faculty, staff can be deleted from ASI directory

Each year ASI produces a Student Directory listing the names of all students, including staff and faculty members who are attending classes.

The directory is made available to all students, staff and faculty members.

Staff and faculty members who do

not wish to have personal information such as their address, phone number and major included in the directory must complete the omission form available in the ASI Business Office, UU 212, by Friday, Oct. 17.

Deadlines set for faculty support grants

It's time to think about submitting proposals for the State Faculty Support Grants program, which supports research, scholarship, and creative activities that help faculty members remain current in their fields, with the intent of strengthening California socially, culturally, and economically.

Faculty members in unit 3 are eligible to compete for funding. Non-tenured faculty members and those in disciplines with few outside sources of support for research, scholarship and creative activity are particularly encouraged to apply.

The four types of support are:

- ♦ Mini-grants of up to \$5,000, to be expended during the academic year.
- ♦ One- or two-month summer faculty fellowships to initiate, continue, or complete a project of creative scholarship or research. Awards will be made

only to faculty members who will remain CSU employees the following fall quarter.

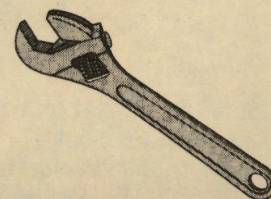
♦ Assigned time for research, creative activity, or scholarship.

♦ A quarter leave at full pay to develop or complete an appropriate activity related to one's academic discipline.

Deadlines to submit proposals for the awards are:

- ♦ Summer fellowship 1998: Dec. 5, 1997
- ♦ 1998-99 academic year awards (mini-grants, assigned time, quarter leaves): March 13, 1997.

Call the Research and Graduate Programs office at ext. 6-1508 or stop by Room 155 in the Math and Home Economics Building for guidelines and an application. Funding for the academic year awards is contingent on next year's budget.



Cal Poly's own 'Tool Man' to be in TV series

Admitting he's more the Al Borland type than the Tim Allen character on TV's hit series "Home Improvement," Frank Calabrese is still excited about his role as the "tool guy" on a new TV series beginning Monday, Sept. 29.

He will make brief appearances in "Gimme Shelter," a show that will air from 7 to 8 pm Monday through Friday for 10 weeks on the Discovery Channel.

The show provides information on home improvements – repairs and upgrades – and covers what do-it-yourselfers need to buy, where to buy it, and how to do the job.

Calabrese will teach viewers about the basics of tools. His part is used to break up the show's long segments to help the timing of the show.

He jokingly compares his style to Borland's – the "straight man" in the comedy show "Home Improvement."

Calabrese, who earned a bachelor's degree in industrial technology from Cal Poly in 1970, is a fire alarm technician in the Communications Services office.

Landscape arch professor wins international award

Gerald Smith, former department head and a professor of landscape architecture, has been chosen the 1997 Distinguished Member of the international Honor Society of Sigma Lambda Alpha Inc.

Smith, this year's only recipient, was recognized for his vision, sense of duty, educational leadership, and service. He was the organization's first elected president. An early leader of the organization, he helped develop its constitution and by-laws.

Smith came to Cal Poly as head of the Landscape Architecture Department in 1980 and served until 1992.

Three new members picked for Hall of Fame

A former longtime head football coach and athletic director, and two alumni — one recognized for his boxing skill, the other for his football prowess — will be inducted into Cal Poly's Athletics Hall of Fame, class of 1997.

Joe Harper, Frank Loduca and Dana Nafziger will be honored at the annual Hall of Fame dinner on Friday, Oct. 10.

Harper served as head football coach from 1968 to 1981 and as athletic director from 1968 to 1973. He is the winningest coach in Cal Poly football history with 96 wins in 14 seasons. He was named the NCAA Division II Coach of the Year in 1980 by ABC

Sports and Chevrolet and District IX Coach of the Year five times in his 14-year career. He was also named Coach of the Year by the American Football Coaches Association in 1972, '73, '75, '78 and '80.

Loduca is remembered as one of the university's all-time greatest boxers. He was the Pacific Coast Invitational champion, a two-time NCAA finalist, and the Pacific Coast Intercollegiate Conference Champion — one of only two boxers from California to achieve this honor. He was named to the National Intercollegiate Boxing Coaches All-American team and was the 1956 Outstanding

Boxer of the Year.

Nafziger was a three-time All-California Collegiate Athletic Association selection in football and a First-Team All-CCAA selection in 1976. During his Cal Poly career, he finished with 63 receptions for 882 yards and six touchdowns. As a sophomore he led the university in receiving with 30 receptions for 498 yards and two touchdowns. He is considered by many to be one of Cal Poly's best blocking receivers ever. He went on to play linebacker with the NFL's Tampa Bay Buccaneers and served as special teams captain.

ACADEMIC CALENDAR 1997-1998

FALL QUARTER 1997

Monday, Sept. 22	Fall quarter classes begin
Friday, Oct. 3	End of second week of instruction Last day to drop a class
Monday, Oct. 6	Last day to add a class Last day to register late and pay late registration fee
Friday, Oct. 10	End of third week of instruction — Census date
Friday, Nov. 7	End of seventh week of instruction
Tuesday, Nov. 11	Academic holiday — Veterans' Day
Wednesday–Sunday, Nov. 26–30	Academic holiday — Thanksgiving
Friday, Dec. 5	Last day of classes
Monday–Friday, Dec. 8–12	Final examination period
Saturday, Dec. 13	Mid-Year Commencement End of fall quarter
Sunday–Sunday Dec. 14–Jan. 4	Academic holiday

WINTER QUARTER 1998

Monday, Jan. 5	Beginning of winter quarter Winter quarter classes begin
Friday, Jan. 16	End of second week of instruction Last day to drop a class
Monday, Jan. 19	Academic holiday — Martin Luther King Jr. birthday observed
Tuesday, Jan. 20	Last day to add a class Last day to register late and pay late registration fee
Monday, Jan. 26	End of third week of instruction — Census date

Monday, Feb. 16

Wednesday, Feb. 25

Friday, March 13

Monday–Friday

March 16–20

Friday, March 20

Saturday–Sunday

March 21–29

Academic holiday — George Washington's birthday observed
End of seventh week of instruction
Last day of classes

Final examination period
End of winter quarter

Academic holiday

SPRING QUARTER 1998

Monday, March 30	Beginning of spring quarter Spring quarter classes begin
Friday, April 10	End of second week of instruction Last day to drop a class
Monday, April 13	Last day to add a class Last day to register late and pay late registration fee
Friday, April 17	End of third week of instruction — Census date
Friday, May 15	End of seventh week of instruction
Monday, May 25	Academic holiday — Memorial Day
Friday, June 5	Last day of classes
Monday–Friday June 8–12	Final examination period
Saturday, June 13	Commencement End of spring quarter
Sunday–Sunday June 14–21	End of university year (faculty only) Academic holiday

Desktop of the future now in residence halls

A new generation of computers that are secure, inexpensive and easier to maintain, and allow users to access a variety of software programs, has been introduced to students in the residence halls.

Unlike the personal computer (PC), the new network computer, or NC, has no hard drive, making it virtually maintenance-free. The NC is linked to a central "server," where software is loaded and files are stored. The NC gives students the same functions as a PC, allowing them to search the Web and run all Microsoft Windows software such as MSWord, Excel and PowerPoint.

Each residence hall has three to five network computers located in the study lounge.

For more information or to see a demonstration, call Kinsley Wong, assistant director, Housing Computing Office, at ext. 6-5927 or email: kwong@calpoly.edu.

Oct. 20 deadline set for faculty program

October 20 is the deadline for applications for the Faculty Development Program that helps probationary or tenured faculty members and librarians to acquire the qualifications for retention, tenure or promotion.

The program provides funding for travel to professional conferences and for research mini-grants. It also pays for temporary replacement faculty members.

Program guidelines, information and applications are available in the Affirmative Action office, Adm. 413.

Visitor booth has new phone, fax numbers

The Grand Avenue Visitor Information Booth has a new campus phone number, 6-7840, and fax number, 6-7841.

PIECE OF MIND

Dear Editor:

If your campus vending machine choice is Snapple, Coke or any other brand besides Pepsi, you are soon in for a VERY big disappointment.

In exchange for a \$1.4 million dollar "donation" to Cal Poly, Foundation Food Services has given PepsiCo exclusive seven-year vending machine rights on the Cal Poly campus. Bye bye, Gatorade. Adios, Snapple. So long, Dr. Pepper.

All of the non-Pepsi vending machines are very quietly being replaced. Adding insult to injury, all prices will be fixed at \$.65 at all machines. Clubs will no longer be able to sell low-priced drinks, thus losing any

benefit in providing those machines.

Those of us who believe that the Foundation is an unresponsive monopoly have again been proven correct. Dr. Pepper will soon be available from the trunk of my car. Complaints should be addressed to: Al Amaral, foundation executive director, 6-1131. For more information, or complaints: Don Shemenske director, foundation Financial and Admin. Services, ext. 6-1353

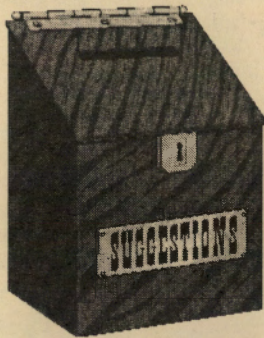
Pete Woodworth
Communication Services

(Related article on page 1)

"Piece of Mind" is for your letters about campus issues. Questions, explanations, compliments, complaints — we want them all. Keep them brief, but keep them coming. Or we'll start nagging. Include name, department, and phone number. Mail to the Communications Office, Heron Hall; fax to 6-6533; e-mail to polynews@polymail.

Food service hours for fall 1997

AREA	MONDAY-FRIDAY	SATURDAY-SUNDAY
Meal Plan		
Lighthouse	Bkfst 6:30am-9:30am	8:30am-10:30am
(all you can eat)	Lunch 10:30am-1:30pm	11am-2pm
	Dinner 4:30pm-7pm	4:30pm-7pm
VG Cafe	Lunch Closed	11am-1:30pm
Sat-Th	Dinner 5pm-7:30pm	5pm-7:30pm
Sun-Th	LateNite 8pm-10pm	Closed Fri-Sat
VG Cafe will serve lunch Sat-Sun; dinner Sat-Thur: late night Sun-Thurs		
Sandwich Plant	7am-10:15am	Closed
	10:30am-4pm	Closed
Cash		
the Avenue	7:30am-3:30pm	Closed
Backstage	10am-9pm (Mon-Th)	10am-8pm (Sat)
	10am-8pm (Fri)	Noon-9pm (Sun)
Campus Store	6:30am-10pm (Mon-Th)	10am-5pm (Sat)
	6:30am-5:30pm (Fri)	10am-10pm (Sun)
the Cellar	Open 24 hours	Open 24 hours
Julian's	7:30am-9pm (Mon-Th)	Closed
	7:30am-4:30pm (Fri)	
Lucy's Juice	7:30am-3:30pm	Closed
Lucy's Juice Too	8:30am-4pm	Closed
Staff Room	10:30am-2pm	Closed
Tapango's	7:45am-2:30pm	Closed
Vista Grande Restaurant	11am-8pm	11am-8pm (Sat)
		10am-2pm (Sun)



Your input needed for new *Report* column

Want to give the university a piece of your mind?

We urge faculty members and staff members to express their opinions or provide information about university affairs through the *Report's* new "Piece of Mind" section — sort of a "Return of the Campus Forum."

Do you have a question or comment about a major or minor campus issue?

Do you have a complaint you want others to hear regarding construction, torn-up roads, or parking on campus? How about those new e-mail and phone systems?

Do you want to say something nice about a colleague or point to a worthwhile project others have overlooked?

We're inviting the good, the bad and the ugly.

We hope to improve communication within the university by giving you another place to voice your concerns. We want to foster dialogue that addresses individual issues and helps explain universitywide policies and procedures. (You might remember we tried a similar "Campus Forum" a couple of years back. We'd like your help in making it work this time.)

Letters received by noon Friday will be published in the next Friday's *Report*. Please keep letters brief and submit them typed and double-spaced. Also include your name, department, and a phone number. Letters may be mailed to Piece of Mind, *Cal Poly Report*, Heron Hall; faxed to ext. 6-6533; or sent via e-mail to polynews@polymail.

We might need to edit letters for clarity and brevity.

— The editors

Banner year for fund raising

Nearly 25,000 gifts were donated to Cal Poly during the fiscal year ending June 30, 1997, breaking many fund-raising records.

Total private support reached \$14.7 million, representing a 21 percent increase over last year and the second highest total ever recorded at Cal Poly. Here is an outline of the sources and designations of private support to the university. Some donors fall into more than one category.

♦ For the seventh straight year, alumni giving topped the \$1 million mark. Restricted gifts to the colleges and units from phone and mail programs totaled \$790,708, a 97.7 percent increase over last year and more than the last two years of giving combined. In addition, the average gift jumped from \$59 to \$65, about a 10 percent increase.

♦ Corporations, businesses, private foundations and associations gave more than \$7.7 million. In addition, gifts from companies that matched employee contributions totaled nearly \$179,000.

♦ Equipment and other in-kind gifts totaled \$4.4 million.

♦ Cal Poly parents, known for giving about 10 times more per enrolled student than parents at other CSU campuses, donated approximately \$532,000.

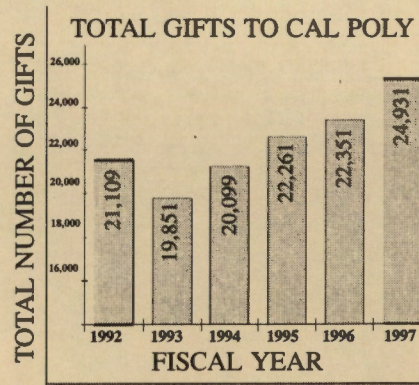
♦ Life income agreements, which provide immediate and lifelong benefits to the donors and the use of principal for the university in the future, totaled more than \$2.5 million.

♦ Endowment support increased to \$2.1 million, a 5.5 percent rise over last year.

More than \$3.8 million was donated by 346 individuals contributing cash gifts of \$1,000 or more.

DISTRIBUTION OF GIFTS FISCAL YEAR 1997

COLLEGE/UNIT	TOTAL
Associated Students	\$ 69,796
Athletics	555,569
College of Agriculture	3,705,804
College of Architecture & Environmental Design	278,987
College of Business	360,465
College of Engineering	3,633,374
College of Liberal Arts	1,191,810
College of Science & Mathematics	760,706
General Endowments & Loan Fund	569,120
Library	45,050
Other University Programs	2,055,530
Performing Arts Center	1,048,421
Student Affairs	59,661
University Center for Teacher Education	5,506
Unrestricted	397,222
TOTAL	\$ 14,737,021



CAL POLY FUND GIFTS

COLLEGE/UNIT	1995-96	1996-97
Associated Students	\$ 6,018	\$ 12,253
Athletics	22,154	44,564
College of Agriculture	103,132	170,812
College of Architecture & Environmental Design	47,017	78,691
College of Business	36,536	92,571
College of Engineering	100,117	235,102
College of Liberal Arts	45,045	83,972
College of Science & Mathematics	30,574	59,994
Library	4,801	6,443
Student Affairs	2,680	2,506
University Center for Teacher Education	1,787	3,800
TOTALS	\$399,861	\$790,708
PERCENT INCREASE		97.7%

Solicitation of vacation, sick leave

Employees are being asked to donate sick leave or vacation credits on behalf of and Rebecca Ramsey in Academic Records and Irel Urreiztieta of Global Affairs.

Ramsey must be out because of a medical disability, and Urreiztieta must take several months off to recover from an illness.

Donations of either sick leave or vacation credits will help them remain in full pay status during their absence.

Anyone interested in donating leave credit for Ramsey should call solicitation coordinator Janice Day, Fiscal Services, ext. 6-2608 for the Catastrophic Leave Donation form.

To donate to Urreiztieta, call Joan Dezemmer, Academic Programs, at ext. 6-2326.

Eligible state employees may donate up to 16 hours of sick leave and vacation credit per fiscal year in increments of one hour or more.

Ballroom Dance Club sets fall meeting, lesson

Cal Poly's Ballroom Dance Club will hold its first meeting and lesson on Sunday, Sept. 28, at the Odd Fellows Hall in San Luis Obispo. The meeting will begin at 5 pm, with beginning rumba lessons at 6 and an intermediate rumba class at 7.

For cost and other information call Karan Greer at 783-2571.

Position vacancies

Vacancy information and applications for the following positions are available from the appropriate Human Resources office. Vacancy information can also be accessed from the Cal Poly home page on the World Wide Web (address: <http://www.calpoly.edu>; click on "General Information"). AA/EEO STATE (Adm. 110, ext. 2236 or job line at ext. 1533). Official application forms must be received by 4 pm on the closing date or be postmarked by the closing date. (No faxes.)

CLOSING DATE: October 10

Extended Closing Date:

#87047: Senior Secretary, College of Agriculture (Unit 7), \$2350-\$2797/mo. Only on-campus candidates may apply.

FACULTY (Adm. 312, ext. 2844)]

Candidates interested in faculty positions are asked to contact the appropriate department office at the phone number listed for more information and an application. Please submit all application materials to the department head/chair unless otherwise specified. Rank and salary are commensurate with qualifications and experience, and timebase where applicable, unless otherwise stated.

CLOSING DATE: December 5

#83011: Assistant or Associate Professor (Literacy/Reading In Teacher Education), University Center For Teacher Education (805/756-1251). Available for 1998/99 AY. Assume leadership role in the literacy/reading program. Teaching courses in elementary/secondary reading, language arts and literacy. Teach educational foundations and core master's degree courses. Supervise field experiences, including student teaching and participate in our partnership school programs. Qualifications required: Doctorate in education or related field earned by 9/1/98 (emphasis in literacy/language arts/reading/English education); successful K-12 public teaching experience, record of or capacity for scholarly achievement. Contact UCTE for other qualifications (call 756-1251 to request an application; reference #83011).

#83012: Assistant or Associate Professor (Coordinator of Counselor Education), University Center For Teacher Education (805/756-1251). Available for 1998/99 AY. Coordinate master's degree in counseling and pupil personnel services (K-12) Credential program. Teach counseling and guidance along with core master's degree courses. Provide services to local schools and supervise field experiences, and participate in partnership schools program. Qualifications required: Doctorate in counselor education or related field earned by 9/1/98; successful K-12 counseling experience, successful experience coordinating projects/programs; record of or capacity for scholarly achievement, ability to work independently and interdependently. Contact UCTE for other qualifications (call 756-1251 to request an application; reference #83012).

CLOSING DATE: October 31

#83023: Assistant Professor (tenure track), Journalism (805/756-2508). Teach

PR, advertising, basic editing and news writing, and possibly other courses within areas of expertise possible. Ph.D. preferred with substantial practical PR and news media experience. M.A. acceptable with recent corporate, institutional or PR agency experience. Professional news media experience required. Teaching experience preferred. Multimedia expertise a plus. Apply to Nishan Havandjian, head, Journalism Department.

CLOSING DATE: November 3

#83021 Assistant Dean for Access & Bibliographic Services (Associate Librarian), Kennedy Library (805/756-2345). 12-month tenure-track position available 1/1/98. ALA accredited MLS degree and five years progressive experience related to responsibilities of position; supervisory/management experience. Knowledge/experience in online public access catalogs and other automated systems including OCLC and Innopac. Expanded job description available on www.lib.calpoly.edu or contact dean at 756-2345.

CLOSING DATE: December 15

#83025: Assistant Professor, Chemistry & Biochemistry (805/756-2693). Tenure-track position available fall 1998 in either analytical, physical or polymer chemistry to teach classes in his/her specialty as well as general chemistry. Ph.D. required at time of hiring. Salary: \$37,140 to \$41,688. Supplemental information available at www.calpoly.edu/~chem. Apply to Albert C. Censullo, chair.

FOUNDATION (Foundation Adm. Building, job line at ext. 7107). All foundation applications must be received (not just postmarked) by 5 pm of the closing date. (No faxes)

CLOSING DATE: October 10

Program Coordinator/Academic Guidance Counselor, Upward Bound, \$2870-3449/mo. Assist low-income junior and senior high school students to pursue post-secondary education. Prefer bilingual (Spanish/English); prior exp. with TRIO programs.

Public Affairs Assistant I, College of Agriculture, \$2458-\$2937/mo. Assist the director of advancement in reporting, writing, editing, proofing, and overseeing college's family of print and electronic publications.

CAL POLY