

# HI FROSH!



**CALIFORNIA STATE POLYTECHNIC COLLEGE**

VOL. 10, NO. 1

SAN LUIS OBISPO, CALIFORNIA

TUESDAY, SEPTEMBER 8, 1949

## SAC Officers Greet '53-ers

On behalf of the Associated students, we welcome you, the class of 1953, to Cal Poly. Graduation may appear to be in the far future, but actually these years need not be spent in vain.

If you enter Cal Poly with the attitude of taking full advantage



**Bob Bowman**

of the opportunities available, you will find this to be an important stepping stone in your life.

We want to stress the importance of your taking an interest in student body government. The student organization is designed primarily to render service to you, the individual student, in order to carry out this service to its capa-



**George Strathearn**

city, it is necessary that you take part in its activities and functions, such as: athletic contests, dances, rallies, assemblies and most important of all, your voice in student government.

As your student body officers for the coming year, we will need your support and cooperation. In turn, we will do everything we can do to make your student government for 1949-1950, a success.

Bob Bowman, President  
George Strathearn, Vice-Pres.  
Alan Raymond, Secretary

Confucious say: "Wash face in morning, neck at night!"

## Chest X-Rays For Students, Food Handlers

In line with the current procedure in other state colleges, Cal Poly entering students will have as a part of their regular entrance physical examinations miniature chest X-rays provided by the State Board of Health's mobile X-ray unit. The unit is operated in conjunction with the county Health Department and the San Luis Obispo county Tuberculosis and Health Association.

In 1948 more than 12,000 people were X-rayed from this county. Among these were 809 from Cal Poly, 41 of which showed signs on X-ray calling for further examination.

The unit will be set up next to the infirmary on September 8 and 7 from 2 to 5 p.m. and 7 to 9 p.m. A volunteer committee will assist headed by Mrs. Jean Haugsten, a registered nurse and a student wife. She will be assisted by members of the Student Wives club.

## Registration News Notes

Each student who is registered for the Fall Quarter should make certain that his complete Registration Set is turned in at the Recorder's Office, Administration Building 102, on September 15, 16, or before noon September 17, 1949. Students cannot be considered properly registered until the complete Registration Set is on file in the Recorder's Office. The enrollment of veteran students or other students enrolled under any law cannot be reported to the proper agency until all registration forms are on file. A fee of \$2.00 will be charged for the late return of registration cards, after noon Saturday September 17th.

Every student, including all students who have been enrolled during previous quarters, should obtain a new curriculum sheet which will show the course requirement for the major department in which the student is registered. Remaining requirements should be checked carefully with the student's advisor if there is any question regarding the courses that are to be completed during the Fall Quarter. Students are not held for course changes added to quarters which have already been completed. Students are required to meet the requirements represented by courses added to quarters which have not yet been completed. Completion of a given quarter is figured on a chronological basis.

Each student should take extreme care to see that his residence address while in college is correct in both the Recorder's Office and the Information Booth. Any change in a student's college residence address should be made in both offices immediately, as emergency calls for students are received from time to time. In some cases in the past it has been impossible to locate a student because he failed to keep the College informed as to changes in his address.

## Orientation Program Set For Freshmen's Benefit



Each year one of the greatest pleasures I enjoy is extending greetings and welcome to all of the new students. We wish all the students to realize that Cal Poly is their college. The administration, faculty, and all of the facilities of this college are available for just one purpose - to supply students with the highest type of educational opportunities. In return we want students to study and work hard so that the time spent at the college will be of the greatest value to each and everyone participating in our program. We also want the students to enjoy the years they spend here by entering into various extra-curricular and recreational activities which contribute greatly to the personality development of their college life.

I wish every success to each and everyone of you.

*Julian A. McPhee*

## Mott Urges Frosh To Enter Athletics

One of the departments of the campus that sends a cordial welcome to the new frosh is the athletic department under the direction of Athletic Director, Bob Mott. Coach Mott wants as many freshmen out for the various teams as possible, and he relates that everything will be to their advantage if they get into athletic competition as soon as they start at Poly.

As is the case in other colleges, there are frosh teams in football, baseball, track and basketball. Practice for the frosh football team will start on September 12. Also the frosh are eligible for other sports, including boxing, wrestling, swim-

## Kennedy To Speak

Something new has been set at Cal Poly and you freshmen are the ones to benefit from it. The Freshmen Orientation Day program is the item in question. We've never had anything like it before and, from all indications, it will make college life much more interesting to you new students.

The idea of the program is to have guest speakers from the various departments to discuss your problems with you. Representatives of all branches of student activity will tell how you can participate in the extra-curricular programs. In this way, you'll know where to go and who to see in order to join a particular organization.

President Julian McPhee will talk to you. His welcome speech will stress the importance of the individual at the college.

The principal speaker for the day will be Bob Kennedy, Public Relations Director for Cal Poly. Bob will speak on the importance of extra-curricular activities in a well rounded college education.

Tours of the campus have been planned so that you may learn, at first hand, where everything is located.



**Robert E. Kennedy**

ming, fencing, tennis, golf, and gymnastics.

All freshmen, excluding veterans, are required to take physical education, which teaches the fundamental skills of all sports. Frosh will be assigned locker space when they register.

Mott urges all new men to enter in the intramural sports competition between their respective dorms. Starting on September 19 with tough football, the fall program will include a tennis tournament, a horse-shoe tournament, and, said Mott, "possibly a swimming tournament."

"All students may check out athletic equipment at any time of the day. All they have to do is sign a 'take out' card," Mott announced. "And for those living out at Camp SLO there will be, in the near future, hand-ball courts, tennis courts, horseshoe pits, and a softball diamond."



# El Mustang

CALIFORNIA STATE POLYTECHNIC COLLEGE

Published weekly during the school year except holidays and examination periods by the Associated Students, California State Polytechnic College, San Luis Obispo, California. Printed entirely by students majoring in printing in the "School for Country Printers." The opinions expressed in this paper in signed editorials and articles are the views of the writers and do not necessarily represent the opinions of the staff, the views of the Associated Student Body, nor official opinion. Subscription price \$2.00 per year in advance. Editorial office, Room 21, Admin. Bldg.

## Editorial Staff

Editor ..... Dave W. Goodman  
 Feature Editor ..... Lee J. Lipsale  
 Sports Editor ..... Jim Tiernan  
 Business Manager ..... Bob Dooley  
 Advisors ..... John Healey, A. M. Fellows

## Literature Class To Be Taught This Quarter

A new literature dealing with significant European and American writers and their ideas on human problems will be offered by the English department this fall. The course is the first in a sequence, any unit of which, however, may be taken separately. This course (211) deals with man and the material world, his reaction to nature, science and machinery. It has been planned especially for students of engineering and agriculture.

Open to all qualified students. Prerequisites are English 18 or 106, or permission of the instructor.

Three units (each course), English 211, offered in the fall quarter, 1949, is followed by a consideration in English 212, winter quarter, of man and the social world; in English 213, spring quarter, of man and the inner world.

Paul E. Pendleton, acting head of the department, will teach the initial course. He has been in charge of the work in English here since the spring of 1947 after years of teaching in Nebraska, Pennsylvania, West Virginia, and Ohio. In California, he has served in the U. S. Army Air Forces, and has taught at U. S. C.

The English 211, 212, 213 sequence of courses was worked on for nearly a year by a committee of the English department. It promises to be a vital course, Dr. Pendleton stated.

## Heavy Demand For Hort Grads

The outlook for prospective nurserymen, florists, and landscapers is especially good at this time. Howard Brown, ornamental horticulture instructor, stated in an interview today. Positions are plentiful and no ornamental horticulture graduates should have difficulty in finding work.

A survey of a few of the more recent graduates gives a fair picture of the opportunities available in the horticulture field:

Jack R. Anderson is manager of the florist shop at Teck's Nursery at Lodi, while Archie Ahrendsen is also managing a florist shop in San Bernardino. Bob Ferguson is employed by the Pacific Nurseries in Colma, California, where he is assistant manager and salesman.

Ross Landbetter works as a field foreman at Del Rancho Fortuna,

## Riebel To Teach Revised Courses In Tech English

Three technical English courses, English 11, 12, and 13 have undergone a complete revision, according to John P. Riebel, instructor in charge of Technical English. These courses, designed for technical and vocational students, have been arranged to form an integrated program of factual communication consisting of letters and reports and leading up to oral reports or speaking.

In English 11, each week is devoted to a "positive" C" such as "Clearness" as opposed to a "negative" C" such as in "Confusion," which is to be avoided in good letter writing. In English 12, practical application of the principles learned in the first course in the writing of sales letters, applications for positions, collection letters, and others. English 13, as now revised, combines both written and oral reports, both related to the student's major field of interest. This is a real innovation in the teaching of communication in the opinion of Riebel, who originated the idea. Riebel has prepared a set of mimeographed material to help the student get acquainted with the practice situations which will probably be called upon to solve by correspondence after leaving college.

Riebel, a new member of the American Business Writing Association, has taught business writing to industrial executives, and has wide experience as a letter writing consultant for large corporations. He was associated with General Motors for 10 years, first as instructor in the General Motors Institute and later as Assistant Manager of Public Relations of Cadillac Motor Co. He holds a B.S. in Chemical Engineering from the University of Kentucky, a B.A. and M.A. in English from U.S.C., and has done a year of work toward his doctorate at the U. of Illinois, at the U. of Detroit, and at other colleges. Riebel has been listed in "Who is Who on the Pacific Coast", a biographical dictionary published in 1949.

McFarland, Calif. This organization specializes in deciduous fruits.

Growing grounds are the main interest of Emile Labidde, who manages them for a large nursery in Portland, Oregon.

For the soon-to-be graduates of Cal Poly's ornamental horticulture department, the main future problem will be one of getting into the field which will best make use of their capabilities.

## All Campus Clubs Welcome Frosh

On the Poly campus are thirty clubs who's membership is open to all students. Look over the list, there will probably be at least one that will be of interest to you.

Each major department has a club devoted to the multiple purpose of providing up to the minute information on the latest developments in each major field through lectures, discussions, trips, movies, etc.; and of bringing students closer together by social events. The following clubs are sponsored by major departments:

Club	Department
Aero Club	Aeronautics
Agricultural Engineers	Agricultural Engineering
Architecture Club	Architecture
Boots and Spurs Club	Animal Husbandry
Crops Club	Fruits and Crops
Hort. Club	Ornamental Horticulture
Mechanical Engineering Club	Mechanical Engineering
Los Lecheros	Dairy Husbandry and Manufacturing

### Poly Phase

Printers	Electrical Engineers
Ag. Inspection Club	Printing
Institute of Radio Engineers	Agriculture
Maintenance Engineers	Inspection
Society of Automotive Engineers	Electronics
	Maintenance Engineering
	All Engineering Departments

In addition to the above, the college has the following clubs which are not directly connected with any department of instruction.

**RIFLE CLUB.** Rifle and pistol shooting. Ownership of a weapon is important. Competition with other collegiate teams.

**NATURAL HISTORY CLUB.** Lectures, movies, and field trips dealing with nature are sponsored by this club. No special qualifications for admission.

**COLLEGIATE FFA.** Prospective agriculture teachers usually join this club. Discussions of new agriculture methods as well as teaching objectives.

**ALPHA PHI OMEGA.** Members of this fraternity are ex-boy scouts. The organization sponsors a Film Society program.

**BLOCK P.** This is an honor athletic organization. To be eligible for entrance, earning a Varsity letter at Cal Poly is a requisite.

**INTERNATIONAL RELATIONS CLUB.** For students interested in the improvement of understanding between different countries and desirous of learning about the culture and customs of other peoples.

**GAMMA PI DELTA.** This is an honorary agriculture fraternity. Eligibility is based on scholarship and participation in student activities.

**CHRISTIAN FELLOWSHIP.** This group's interest is to promote Christian fellowship on the campus. It is also exchanges ideas with other campus clubs in joint meetings.

**PENGUINS.** This is one of a total of two college Motorcycle Clubs recognized by the American Motorcycle Association. Escorting and traffic control are some of its functions.

**MUSTANG FLYERS.** Provides low cost flying and instruction to its members.

**BOWLING LEAGUE.** The league is made of bowling teams representing the various campus clubs. Competitive games are held.

## Camp SLO; Poly Housing

Approximately 1100 students are expected to be housed at Camp San Luis Obispo this fall, according to Bill Troutner, supervisor of resident students. The administration is now waiting for National Guard approval on a long term lease for the camp buildings. In the past, a one year lease in all that could be obtained.

In addition to the long term lease, a request has been made for 18 additional buildings. This will provide accommodations for about 1400 students with two men to a room. At present about 800 students are all that can be housed at this unit.

The recent conversion of the NYA dormitory units, Avenger and Seagull, to the Architecture and Dairy departments has decreased campus housing space. Therefore, the 100 students that

YMCA. Moral and social education is the principle aim of the organization. Many social campaigns are conducted and students of all races and creeds are united.

**SKI CLUB.** Organizes skiing trips as well as social events. Interest in this sport is the main qualification for membership.

**RALLY CLUB.** As the name implies, this club's members cooperate to arouse school spirit at games and many other events.

would be housed in these dorms will be moved to the camp.

The area, which is a village in itself, will be landscaped and fenced. A cafeteria run by Noggles will replace the Camp Corral that was managed by El Corral.

A recreational program will be set up. Handball courts and horse-shoe pits will be built. The ground will be leveled for a soft ball diamond. Pool tables and ping-pong tables will be available at a snack bar to be located in the recreation building.

Improvements and repairs will be made throughout the existing buildings. Locks will be placed on all the doors. There will be new roofing and painting and floors are to be recovered.

## New, Second hand and reconditioned TYPEWRITERS FOR SALE

Repairs on all Makes  
 Sales and Service on all Makes  
 Typewriter and adding machine rentals.

Electric shavers sales and repairs

**BOB WALKER**

785 Marsh St. Phone 681-W

## Complete Line of Maternity Wear

**Billie's**

Toy and Baby Shop

Phone 2628 - W

766 Higuera St.

## PHOTO SUPPLIES Quality Developing and Printing

## Over Night Service

## Cal Photo Supply

692 Higuera

Phone 773

## The Original

## MOTEL INN

- Excellent Dining Room
- Dancing

Harold Spillers, Manager  
 At North City Limits  
 Phone 1340

## Guaranteed Balanced Tire Treading Seiberling and U.S. Tires - Batteries

**Kimball Tire Co.**

283 Higuera Phone 758

**CUSHMAN**  
 Motor Scooter  
 SALES PARTS SERVICE

## Welcome New Mustangs

## STOP BY AND GET ACQUAINTED

GULBRANSEN PIANOS

BAND INSTRUMENTS

COMPLETE LINE OF RECORDS

## Brown's Music Store

"Everything Musical"

717 Higuera

## Expert Radiator and Battery Repairs

Veteran Operated

## Banks Radiator Shop

1011 Toro St.  
 San Luis Obispo

## Your shoes WILL wear out

Let...

## Takken's Shoe Shop

Repair Them

1023 Marsh St. S.L.O.

## Surv - Ur - Self Laundry

Is the place to go for a quick clean wash.

SOAP IS FREE

Just leave your laundry

—We do the work—  
 Attendant on duty at all times

Open 8 A.M. to 8 P.M.  
 183 Higuera Phone 1932





High-stepping Betty Jo Bewley stole the show at many of the football games, and with good reason. Student wife Betty Jo was once a national baton twirling champion. You'll see Betty Jo and the entire Poly band during the half-show at all the home football games.

# Open Letter To Frosh

The Music department would like to extend a hearty welcome to all incoming frosh. We know that you are going to enjoy your stay here at Poly, and we hope that the music department will be able to make your stay even more enjoyable.

We would like to invite all of you who have musical talent to join our groups. There are three musical organizations on the campus in which you might be interested.

First, there is the Mustang Band, the Band is composed of from 50 to 60 men and plays for all home football games, as well as a few away, all student body assemblies, and for other events happening throughout the school year. The Band is a fast stepping group as any football fan will tell you. Tryouts for the band will be held on Monday, Tuesday, and Wednesday, September 12, 13, and 14 in the music room, classroom 1 at 4 p.m.

Second, there is the Glee Club. The Glee Club sings at student gatherings all through the year as well as taking an annual tour of the state in the spring. Tryouts for the Glee Club will also be held on September 12, 13, and 14 in the music room at 6:30 p.m.

Third are the "Collegians" Poly's well known dance orchestra. Although the orchestra has a more static membership than the other two organizations, there are openings for one or two new men. Tryouts will be held on the same days in the music room at 8 p.m.

We would also like to invite you new men

# The Passing Of A Champion

(With Appologies to Robt. Service)  
By Paul Nelson

A bunch of the boys were whooping it up in the El Corral one noon,  
The juke box in the corner was sobbing a be-bop tune,  
At the billiard table, with a crooked cue, stood Dangerous Dan McSlew.  
Watching his luck there was a crowd, and the air with smoke was blue.

When out of the hall, which is just outside, and into the din and glare,  
There stumbled a freshman, fresh from the farm, and his face was as brown as his hair.  
He looked like a kid who was green as they come, and scarcely as bold as a mouse;  
Yet he emptied his pockets of all their change, and called for drinks for the house.

There was none could place the freshman's face, though we searched ourselves for a clue,  
But he shouldered his way, 'till he stood face to face with Dangerous Dan McSlew.  
"Dan," he said, "I guess I'll play," and he picked up another cue.

The room grew still as a sneer crossed the face of Dangerous Dan McSlew.  
"Sure Kid," he said, as the class bell rang, but nobody ventured to go,  
For Dan was the champ, but the kid was grim, and this might mean a show.

And the boys all knew that the game would be close, as they knocked in ball after ball,  
There were wagers and bets, and thoughtfully, someone closed the door to the hall.

The battle was nearing the climax now, and you couldn't hear a sound,  
But the tick of the clock, and an uneasy stir, as the eight ball came around.

This was the shot that counted, and Dan drew back his cue,  
Then he smashed it home, and there wasn't a doubt but what the game was through.

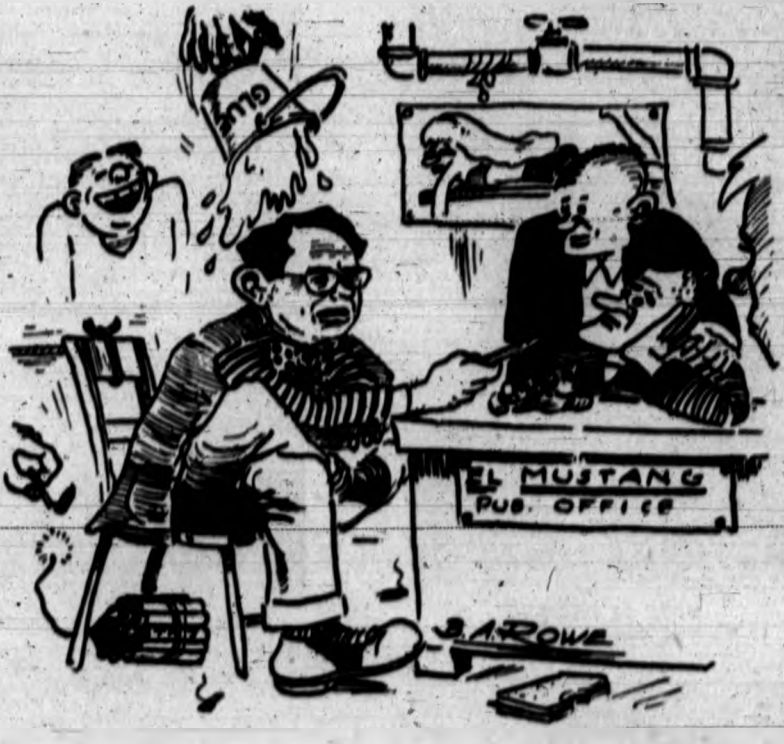
But what was this?—The crowd went wild, for Dan had missed by a hair.  
Now the freshman shot, and a roar went up, that echoed through the air,  
For he made the eight, in the pocket he'd called, and every man there knew,  
That this game that was played in the El Corral, was the last one for Dan McSlew.

Now, this story has a moral, as all good stories should—  
Next time you think that a freshman's green, you had better knock on wood.

to stop in at classroom 1 if there is something we could do for you. If you just want to kill some time, come in and look at the pictures of past groups that are on the walls.

Again a large welcome to all of you, and we will be looking forward to seeing you.

Harold P. Davidson      Fred W. Waterman  
Director of Music      Stu. Mgr., Music Department



Kennedy returns from the wilds of Polo Alto. Welcome home, Bob.

# Did You Buy Your Card? File Thirteen

By Dave Goodman

Many students have asked the question, "why should I buy a Student Body Card?" Briefly, the money derived from the sale of these cards serves as the income for your student body government to be used for the benefit of each.

With the purchase of this card you are entitled to all rights, privileges and activities carried on by the Associated Students. You may vote in all the elections, enter into any competitive activity and receive El Mustang free of charge.

The following lists some of the many financial benefits you derive from your membership:

10 Football games:	
6 Varsity, 4 Frosh	\$ 9.00
At least one-third of 10 home Basketball Games	4.00
13 Baseball Games	9.75
2 Track Meets	1.50
6 Waterpolo Games	4.50
16 Dances	16.00
5 Boxing and Wrestling Matches	8.75
1 Year Book: 1.00 to you, 6.00 without Card	5.00

VALUE TO YOU \$58.50

At no other college in the West can you receive so much benefit with a student Body Card as at Cal Poly, and on no other \$15.00 investment can you receive such returns.

Howdy . . . The idea of this paper is to give you the straight dope about things and stuff around Cal Poly. Also we are trying to impress you with the fine newspaper we edit, publish and print on the campus in order to interest you in joining our happy crew. It takes no talent to work on this rag, only ambition, and you must have had that or you wouldn't be going to college.

Entertainment . . . All kinds of athletic events, shows, dances and stuff like that going on around here all the time. All you need to get in on the fun is a student body card. Well, don't just sit there. Go get one!

San Luis . . . For a small town, there's a lot going on down where the Neons shine. Movies, gin-mills, folk dancing on Thursday nights at the City Recreation Center, and Saturday nights at the Carpenter's Union hall all beckon. Lots of other dances and social affairs at nearby towns. There are churches in town of all denominations, all of which have active social groups.

If you go for plays, there's the Little Theater. There is also a society that puts on a series of concerts and musicales. Check the local Telegram-Tribune for times and dates on these events.

Film Society . . . Here on campus we have a film society. You get seven shows for a buck and a half. —Good shows, too. If you own a student body card, you can get in on that deal.

Memorial Union . . . We're trying to raise a few hundred grand to build a Union on the campus. The profits from the film society and El Corral go towards this fund. Lots of other programs for the same reason are presented. With your help, the Union may be built in time for the '50ers to enjoy.

Where . . . No matter how much information you get in this issue of El Mustang the Fresh Hand-book, or the Orientation Day program, there will still be plenty of things that you'll be curious about. Well, there are two places where you can usually find the answers to your queries.

Try the student body office, room 26 Adm. building where Bowman, Strathearn, Raymond, Graduate Manager "Tut" Starkey and Starkey's pretty secretary Helen Gillen might be able to help you.

If this fails, try the El Mustang office in room 21 Adm. building. The people at any of these locations are in the know, and glad to help you.

You . . . There are two kinds of people enrolled at Poly, the students and the undergrads. The students are the guys who go to class and lab, and hole up in their rooms the rest of the time. They're the ones who always gripe about what a dump this is with nothing to do.

The undergrads, on the other hand, get in their college work, but also go out for the activities that are offered. These men get a hell of a lot of fun out of college and enjoy their stay at Poly.

It's up to you. Whether you're a student or an undergrad, it's your affair and no one else's. Make your choice.



ADMINISTRATORS left to right are: Donald Nelson, Business Manager; C. Paul Winner, Dean of Admissions, Guidance and Placement; Vernon H. Moacham, Dean of Student Welfare; Leo Philbin, Registrar.



ADMINISTRATORS: John Jones, Placement Secretary; Henry House, Coordinator of Student Activities; William Troutner, Supervisor of Resident Students; Joseph C. Deuel, Housing.





**YARD M. SHEPARD**  
Dean of Agriculture Division



**CHESTER O. McCORKLE**  
Dean of Instruction and Assistant to the President.



**C. E. KNOTT**  
Dean of Engineering and Industrial Division



**HUBERT H. SEMANS**  
Dean of Science and Humanities Division



**THOMAS J. ZILKA**  
Head of Mechanical Engineering Department



**GLENN A. NOBLE**  
Head of Biological Sciences Department



**SCIENCE AND HUMANITIES** . . . Top row, left to right: Paul Pendleton, English; Woodford Bowles, Physical and Life Sciences; Stanley Clarke, Education and Psychology. Bottom row, left to right: Robert Mott, Physical Education and Athletics; Harold Davidson, Music; Milo Whitson, Mathematics.

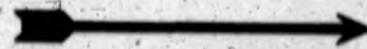
## Directory



Julian A. McPhee, President	Rm. 142
C. O. McCorkle	Rm. 137
Yard Shepard	Rm. 136
Hubert H. Semans	Rm. 135
C. E. Knott	Rm. 134
C. Paul Winner	Rm. 125
Oberlin B. Nereson	Unit E
Leo Philbin	Rm. 125
Vernon H. Meacham	Rm. 130
L. D. Starkey	Student Body Office
William R. Troutner	Rm. 130
Joseph C. Deuel	Rm. 130
Harry Wineroth	Rm. 130
Martin R. Engler	Rm. 130
John Jones	Rm. 130
Donald S. Nelson	Rm. 108
Cecil Jones	Rm. 108
Henry House	Rm. 142
L. L. Bennion	Ag. Ed. 102
W. E. Bowles	CR 13
S. T. Clarke	Adm. 113
S. B. Collins	Ag. Ed. 102
H. P. Davidson	Adm. 115
P. Dougherty	Ag. Ed. 105
G. M. Drumm	Seagull
A. M. Fellows	Adm. 20
E. C. Glover	E. E. Lab
L. W. Gustafson	CR 11A
W. B. Howes	Adm. 113
R. Leach	CR 14B
J. F. Merson	Adm. 112
R. A. Mott	Athletic Office
G. A. Noble	CR 16
P. E. Pendleton	Office Addition Rm. 7
R. B. Priestley	Hillcrest
C. Radius	Ag. Ed. 111
N. Sharpe	A. C. Lab
F. S. Allen	Library
M. E. Whitson	CU G
T. J. Zilka	CU F

**AGRICULTURAL DIVISION** . . . Top to bottom and right to left: George Drumm, Dairy; Paul Dougherty, Crops; James Merson, Agricultural engineering; Spelman Collins, Sheep Husbandry; Wilber Howes, Ornamental Horticulture; Lyman Bennion, Animal Husbandry; Richard Leach, Poultry Husbandry.

**ENGINEERING DIVISION** . . . Top row, left to right: E. C. Glover, Electrical Engineering; Lester Gustafson, Aeronautical Engineering. Second row: Norman Sharpe, Air Conditioning and Refrigeration; Clarence Radius, Electronics and Radio. Bottom row: Ralph Priestley, Architecture; A. M. Fellows, Printing.





## Printing Majors Learn All Phases Of Their Trade

"The School For Country Printers", as the department of printing is popularly known, is located in the basement of the Administration Building. It is unique in that it is the only degree course in printing, other than that offered by Carnegie Institute of Technology in Pittsburgh. The instruction in this department is given by A.M. Fellows, head of the department, Guy Culbertson and M.M. Kopjar.

It is called the "School For Country Printers" for the broad knowledge and training closely approximates the responsibilities that have to be met daily by the editor and publisher who must perform not only in the work of the front office but also that of the back shop.

The printing department is completely equipped with Linotype machines, platen presses, cylinder presses, automatic presses, folding machines, power stitchers, over 250 cases of new and modern type, stereotyping equipment, and bookbinding supplies.

The four-year curriculum is designed to prepare men for positions of responsibility in the allied trades of the printing industry. It requires over 8002 hours of class and laboratory work in the field and more than 504 hours in related fields such as machine shop, welding, journalism, elementary electricity and accounting.

"Other required and elective courses will make up the well-rounded program, to the end that the graduate of the 'School For Country Printers' will not only be a valuable, technically-trained employee capable of handling the many phases of printshop operation, but will also have a good background in citizenship, public relations, office practices and other phases leading eventually to foremanship and proprietorship," A.M. Fellows said.

## Landscaping For Library This Month

Come autumn, Poly's new library will blossom forth with a brand new exterior. Excavation on the underlying rock on the library grounds will start early this fall.

The front part will be enclosed by an adobe brick wall, and will be landscaped with a variety of broad-leaved plants to give a semi-tropical effect. The plans show a large tile pond in the center with several benches at various vantage points along the wall.

Single parking facilities will be available on the North and West sides. To the side of the patio, a wide six to eight feet walk will lead up to the main entrance of the library.

A great many man hours will be saved by the addition of a complete set of automatic sprinklers which will be installed on the proposed area. One full time gardener will be in charge of both the new library and the administration building.

With fall quarter just around the corner, and the coming of the new year we can look forward to a fast growing campus to better fit the needs of a growing student body.

Secret: something you tell to one person at a time.

## Glenn A. Noble Campus Personality

If we had to make a list of faculty members of highly interesting background, Dr. Glenn A. Noble, Chairman of the Department of Biological Sciences, would certainly be on the front page.

The son of an American missionary, Noble was born in Korea and learned the natives' language in his early childhood. After finishing high school, he came to the University of California to study sociology, earning a B.S. and an M.S. at Berkeley, and a Ph.D. at Stanford University.

While he was acting as consultant for the American Military Government in Korea, Noble gave his own time to teach laboratory techniques to lepers who are confined to a colony in South Korea. Noble was for ten years head of the Department of Biology of San Francisco City college and has done research in bird diseases for the California Fish and Game Division. Confirmation of his high standing as a scientist is the fact that he has been listed in "American Men of Science."

Married and with three daughters, Noble has built his own home in San Luis Obispo. He has a twin brother who has followed the same career, and is Chairman of the Department of Biology at Santa Barbara college. Noble thoroughly enjoys his present work and believes that Cal Poly, with its combination of academic and practical training, has an ideal educational program. His department is offering a major in Biological Science.

## 2,000 Autos Expected To Swamp Area

The enrollment this year at Cal Poly is expected to be the largest in the history of the school. Approximately 1900 hundred cars are expected to be parked on the campus which has parking space for 1200 cars. To avoid confusion and complication, the Administration asks the full co-operation of all concerned in this matter. Resident students are asked to park their

cars at their respective housing units, by doing so they will provide parking space for non-resident students in the reserved parking lots.

Infraction of the rules that have occurred in the past are parking in the wrong direction and driving on the wrong side of the street. This is especially true in the area around the post office. Also driving at excessive speeds on the roads through and adjacent to the student housing areas. The speed limit here is 15 miles per hour.

Stiener has announced that a 15 minute parking zone will be established on College avenue near the Administration building. This will be for the convenience of students having business there.



### One Stop Shopping Center

### Over 100,000 Items To Choose From!

- Farm Equipment
- Sporting Goods
- Hardware & Paint
- Auto Accessories
- Plumbing & Building Materials
- Furniture & Floor Covering

Take advantage of the large well-equipped service station located at the rear of our store.

**Satisfaction guaranteed  
or your money back**

9 A.M. to 5:30 P.M.

Free Parking

JOIN . . . .

### BIBLE-BELIEVING CHRISTIANS

In Praise—Prayer—Study

### GRACE TABERNACLE

(UNDENOMINATIONAL)

11 A. M. SUNDAY

OSOS and PISMO

## Tick-Tock CAFE

Quality Foods

Breakfast

Lunch

Dinner

Corner of Santa Rosa  
and Monterey

Phone 2922

## HERE'S SERVICE FOR YOU!

It is my pleasure to welcome Faculty and Students back to the new Fall Term at California Polytechnic College

### Real Estate Problems

- It is my business to Sell, Lease, Appraise or Manage.
- It will be a joy to serve you in your HOUSING.
- Forty-five and one-half years of teaching experience gives the CROWN OF RELIABILITY to this office.
- TWENTY YEARS IN SAN LUIS OBISPO SCHOOLS.

Real Estate to meet your pocket book ranging from \$3,000 to \$35,000.

### CHARLES E. TEACH

Licensed Real Estate Broker

993 Osos Phone 918W or 1336

## Welcome Frosh!

We have a complete line of.....

- ★ Books, stationery supplies
- ★ Toilet goods
- ★ Poly souvenirs
- ★ Magazines, candy, tobacco

**Fountain and Lunch  
Service**

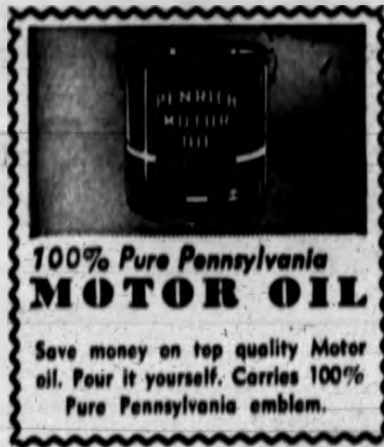
## EL CORRAL

Basement

Adm. Bldg.

FREE

CAL POLY MUSTANG  
WINDSHIELD STICKER



I. O. Heydenfeldt's



FREE

CAL POLY MUSTANG  
WINDSHIELD STICKER

**STATE FARM MUTUAL**  
Announces  
**Drastic Cut In Auto  
Insurance Costs**  
Selling Also — —  
LIFE — FIRE  
PERSONAL LIABILITY  
See — —  
**THERESA RIDGON, Agent**  
1016 COURT STREET

**'Known for Good Clothing'**  
**Green Bros.**  
● Stetson, Mallory Hats  
● Manhattan Shirts  
SAN LUIS OBISPO  
● Munsingwear,  
Phoenix Socks  
● Crosby Square Shoes  
871 MONTEREY STREET  
● Society Brand Clothes

## ALBERT'S FLORIST

Flowers for all Occasions

Reasonably Priced  
Exclusive Gifts  
Flowers of Distinction

Phone 282 865 Higuera St.





"You're Right, This Sure Is Cal Poly"

## Grid Team Prepares For Season

Head football coach, Charles Pavelko, opened the 1949 football season last Thursday when more than 80 grid players reported for fall drills.

Pavelko, along with assistants, Sheldon Harden and Bob Herwig, former California All-American and new assistant, welcomed back 18 lettermen along with more than 80 junior college transfers and a like number of up-coming freshmen.

Back in the Mustang fold are Vernon "Pinky" Bebernes, all California Collegiate Athletic Association back last year. Bebernes led the conference in total offense and passing and was eighth among the nation's small college passers.

Charles Weber, end, and receiver for many of Bebernes' passes is also back in suit. He was rated fifth last year among the nation's pass receivers for the eight game season.

The Cal Poly coaches will hold two drills a day until Sept. 12. The 1949 season will open Sept. 17 in Poly Stadium with an intercollegiate clash with the University of Mexico.

## Book Store Procedure

El Corral's book store has been stocked and equipped to furnish all students with books and supplies for any class or shop.

On September 6, during registration, all ex-GI students will be issued a yellow book card. This card is to be carried at all times and must be shown for any book store purchase. Book slips must be signed by instructors before books will be issued on the "GI Bill."

The book store will be open Monday through Friday from 8:15 a.m. to 4:15 p.m. Non-GI students will be received in a cash line in the book store. All students are asked to list all needs on the pads provided as this will shorten the waiting period considerably. Supply room 22, Adm. building,

## Do You Have S.O.P. For Vets V A Check-itis?

The Student Welfare office would like to acquaint the student body with details concerning the operation of the student loan funds.

The monies comprising the student loan funds arrive from several sources. Part has been the contribution of various individuals to the Memorial Loan Fund. The Women's Faculty club has contributed to another section of the loan fund. Monies have been made available for loans especially to veterans. The income from the Leopold Wrasse Trust Fund comprises another section of the loan fund.

The monies available for short term loans at the present time amount to \$3,352.15. These funds are augmented by the 25c service charge which accompanies cash loan, and by the delinquent charges which are made when the due date of a particular loan is past.

During the school year 1948-49, a total of 537 individual loans were made totaling \$11,012.65. This indicates an average loan of approximately \$20.50. From these figures, it is apparent that the loan fund has revolved about three and a half times during the school year.

The capacity of the loan fund, while not large, has served a very large student need, since it has been possible to re-loan the same money. Of course at present the difficulty the veteran students are experiencing in not receiving subsistence allowances has created a very heavy drain on the loan funds. It is hoped that these funds will be able to tide over those most in need.

The Student Welfare office would like to indicate to the student body, however, that the purpose of these funds is to tide over the individual who is in need from the standpoint of room and board. It is not intended that the funds be used for recreation, repairs to automobiles, etc.

The repayment of loans within the specified time is also of importance, since the balance on hand always determines the availability of assistance to those individuals whose problem may be one of temporary need.

will be open Saturday morning, September 10, and again on September 12 through 16 for stationary supplies and equipment.

Veterans who intend to go to school this Fall under the GI Bill are advised by the Veterans Administration to start making necessary arrangements, in order to avoid last-minute rushes and delays.

As a first step, you should make certain your V-A certificate of eligibility is in order.

If you were attending school this past spring or summer under the GI Bill, and intend to continue in the same school and course this fall, your present certificate of eligibility, on file with the V-A, is valid. There is no need to contact the V-A about the certificate.

If you intend to continue in the same school but in a different course, you should see Leo Philbin, to learn whether the school requires a supplemental certificate of eligibility.

If you are already in school and intend to continue your GI Bill education in a different school, you should apply as soon as possible for a supplemental certificate of eligibility.

Those who need supplemental certificates of eligibility to attend different schools or take different courses may obtain application forms from the school or from any V-A office.

\$1,000,000

Is Plenty Shocks

5 95

aint much to

Electrically Recap

Your Tires

OK Rubber Welders

corner Marsh and

Santa Rosa

Phone 2619-R

## F.F.A. To Hold Beach Party

Off to a rolling start the Collegiate F.F.A. invites all prospective Ag. teachers to attend a beach party. The time is Sunday afternoon, Sept. 18, starting at 1 p.m. at Avila (north of Avila across the road). There will be plenty of activity arranged by Charles Adams, while Bob George takes charge of serving your favorite refreshments.

The first meeting of the Cal Poly Collegiate F.F.A. Chapter will be held on Tuesday night, Sept. 20 at 7 p.m. in room 214 of the Administration Building. Herbert Burlingham will outline the new 5th year program for all Vocational Ag. men, and Dr. Beman will outline the probable requirements and pattern for a Master in Agriculture.

*If you can't find it  
in the store...*

Look in the

Fall and Winter catalog

"The wish book of America"

**Montgomery Ward**

876 Higuera

Phone 2310

We have the laundry concession  
with the campus.

Send your dry cleaning  
with your laundry.

Dormitory Pick-Up.  
— DELIVERY —

Ag. Ed. Bldg. Basement and  
Adm. Bldg., Camp S.L.O.

HOME LAUNDRY  
AND  
DRY CLEANING

1323 MORRO ST.

PHONE 70

SAN LUIS OBISPO



Your Levi Headquarters in  
San Luis Obispo

**BEND'S**  
BETTER VALUES

THE BEST-KNOWN NAMES OF  
NATIONALLY-FAMOUS\* *Quality* MERCHANDISE  
ARE AT

**Wickenden's**  
837 Monterey Street